

TELUS

TECHNICAL RIDER 2026

TECHNICAL DIRECTOR

GILLES LARIVIÈRE

concertproduction@hotmail.com


SOUND MANAGER

RENO RICHARD

renoxyz@hotmail.com

59, Ste.Catherine Street E.

514 844-3500

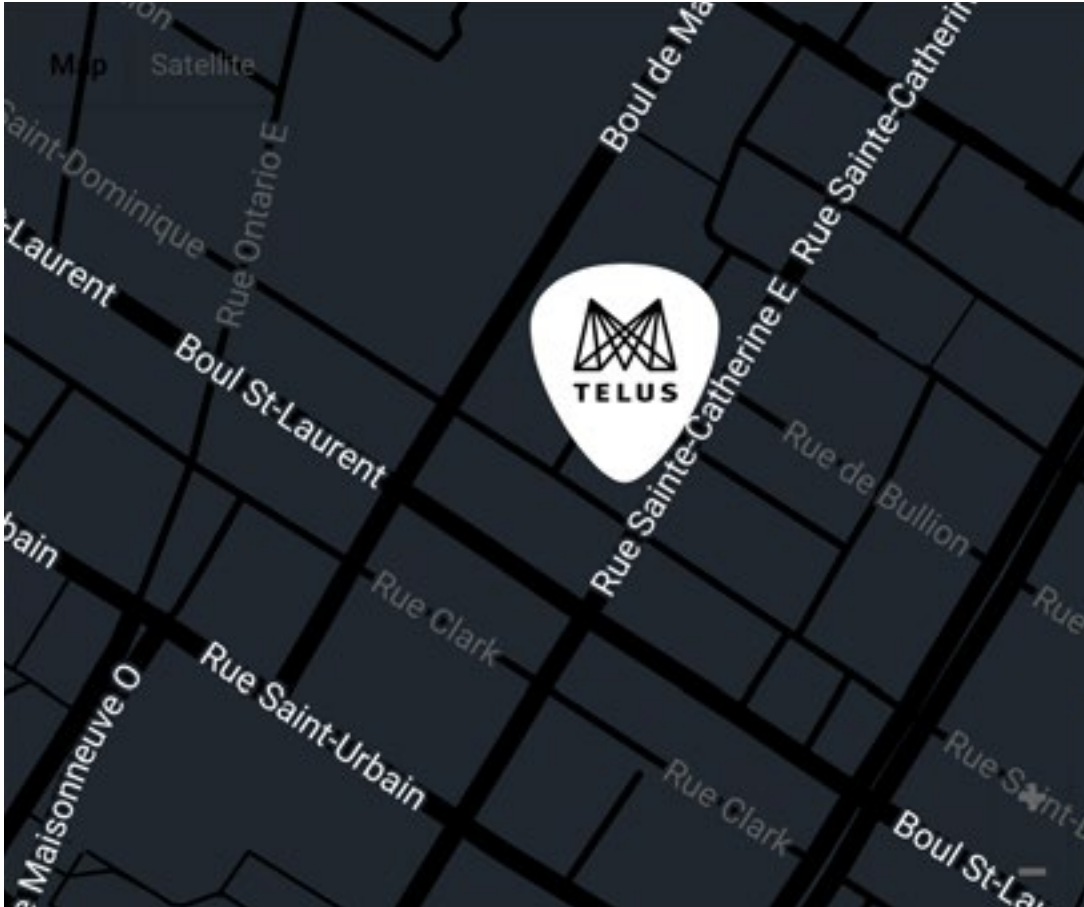
 Saint-Laurent

||| MTELUS.COM

ADDRESS

Main entrance / artists

59, Ste.Catherine Street E.
Montreal (Quebec)
H2X 1K5



LOADING DOCK / ARTISTS ENTRANCE

Access from Boisbriand St. (one street north of Ste. Catherine St. E.), via St Dominique St.

Distance from stage:	12' 6" (3.84 m)
Level from street:	4' (1.2 m)
Height:	12' (3.66 m)
Width:	5' 8" (1.77 m)

HOUSE

Capacity

Standing :	2 300 people
Seated :	1 021 people
Banquet :	400 people
Cocktail :	1 200 people
Cabaret :	1 100 people (seating and standing)

Panneau d'affichage

Entrance billboard: : 6' x 12" (1.82 m sur 0.34 m)

STAGE

Wooden floor covered with black linoleum.

Proscenium opening

Total depth: 33' 2" (30' to backdrop curtain)
Width : 30' 10"
Offstage: 18' wide x 24' deep
Stage height: 4' 7" (calculated from the ground)

Proscenium arch (4' from downstage)

Height: 22' 8"
Width: 31' 10"

STAGE MASKING

Stage curtains

1 x black full backdrop
1 x proscenium fire curtain
3 x sets of black legs on each side of the stage

POWER SOURCE

Lighting

1 x 400 A 3 phases cam-lock, on stage right side

Sound

1 x 300 A 3 phases cam-lock, on stage left side
125 amps Upstage right, usable only if we're not using our VdO wall

RIGGING

Stage

1 x 33' x 21' grid with 8 pipes each 23-24" + 4 motors 1t.
1 x 12" x 12" x 32' truss (upstage) + 2 motors 1tn

House

1 x 16" x 16" x 32' FOH truss, 13'8" from downstage. 2 motors 1t.
1 x 16" x 16" x 32' truss, 37' from downstage. 2 motors 1t.

DRESSING ROOMS

Access from stage right and left.

Main room: 46' x 17' (14.02 m x 5.18 m)

Dressing room 1: 11' x 14' (3.35 m x 4.27 m) with sink.

Dressing room 2: 11' x 14' (3.35 m x 4.27 m) with sink.

Dressing room 3: 12' x 13' (3.66 m x 3.96 m) with sink.

Note: There are two toilets and two showers next to the main room.
The main room gives access to all the other rooms.

RIGGING

Stage

Mother grid is at 66'*.

* Note: The rigging plot as to be approved by the TD and by the rigger as well as our head rigger
sebjean@rigrigproductions.com.

Hall

* Note: The hanging point have to be discuss with the TD and by the rigger as well as our head rigger
sebjean@rigrigproductions.com.

LIGHTS

Console

1 x GrandMA GMA2 Lite

Networking

1 x Switch MA 2

1 x Node DMX MA 2 (8 ports)

4 x Opto splitter DMX

2 x Ligne Cat 5 (RG45)

1 x Snake DMX (5 ports)

Dimmers

1 x Distro Theatrixx 48 15A\208V (8 out socapex)
60 x Dimmers 2400W 20A\120V
1 x Distro 24 20A\120V (4 out socapex)
1 x 400amps three phases camlock (Stage Rights)
1 x Feeder camlock three phase 4/0 15'

Stage lighting:

12 x Martin Quantum Profile (Mooving spot)
12 x Clay Paky Beyes K10 cc (Mooving wash)
12 x Chauvet Colorado 2 Quadzoom IP (Led par)
6 x Clay Paky Stormy (Led strobe)
8 x Elation Cuepix WW4 (Led blinder)
9 x Lekos ETC 575w 26 degrés (FOH)
12 x Leko ETC 575w (Libre)
2 x Lentille Leko ETC 19 degrés
6 x Lentille Leko ETC 26 degrés
6 x Lentille Leko ETC 36 degrés
4 x Lentille Leko ETC 50 degrés
4 x Bar ACL (Aircraft)
4 x Bar@6 (6 x Pars 64 Medium)
6 x Pars 64 Medium (libre)
4 x Pars 64 Medium (FOH)
1 x Poursuite Robert Julia HMI 2500W (Follow spot)

Accessoires

12 x Porte Gobos (Format Leko ETC)
18 x Gels Frame (Format Leko ETC)
24 x Gels Frame (Format Par 64)
Gels inventories upon requests

SOUND

FOH

L-Acoustics

K3 (10x per side)
KS28 (4x per side)
A15 (3x Fill per side)
X8 (4x Lip Fills)
A10 (4x Bar/Corner Fills)
MTD108a (4x Backbar Fills)
P1 Processor @ FOH
Left / Right / Sub / Fill – Analog or AES/EBU

CONSOLE

AVID S6L 24D
56 Inputs Stagerack
8 Local I/O

MONITEURS

16 x D&B M4
1 x D&B B6
2 x D&B V8 (par Coté)
2 x D&B V Subs (Par Coté)
8 x PSM 1000

MICROPHONES

Wireless:

4x Shure ULXD2 SM58

Sennheiser

8x e935
4x e945
2x e901
2x e902
4x e904
4x e905
4x e908
6x e835
5x e845
6x e865
4x e608
4x e604
4x e608
1x e602
1x e602II
4x MD421
4x MD441

Shure

10x SM58
5x SM57
1x Beta 52
2x Beta91
2x SM91
2x SM81

DI Boxes

10x Active Klark-Technic
6x Passive Cable Factory

Misc

3x EV 468
1x EV RE20
1x AKG 391

Neumann

4x KM184
4x KM185

Mic Stands

20 tall black K&M
15 small K&M
8 feets Atlas base

Tobacco products

Please notice that since 2006 may 31st , it's forbidden to smoke in all public areas, including bars, restaurant and all cultural establishments. Here is a quick resume of Quebec's provincial law.

Article 2

It is forbidden to smoke in cultural establishments. (Including MTELUS and his dressing rooms.)

Article 42

Anyone that does not respect article 2 will be given a find reaching from \$50 to \$300 for a first offense and from \$100 to \$600 for a second offense. (Security personnel of the building as got the power to give these finds)

Article 43

The venue's administration can be fined from \$400 to \$4000 for a first offense and 1000\$ to 10 000\$ for a second offense if they are found guilty of not making sure the law was respected.

Article 57.1

Stipulates that any person, administration and by extension the promoter could be called before a judge if it is proven that anyone has intentionally permitted someone to bypass article 2 in any way. Penalties could go up to seizure of all the revenues received from an activity during which the offense was perpetuated. For all parties.

Safety equipment's

As per provincial law: It is mandatory that everybody onstage (any person working or supervising work), during a load in or a Load out, must wear protection shoes with steel toe.

Effects of flames, fire and pyrotechnical effects

The producer of an event that wishes to hire a manipulator of fire (spitting or juggling of fire) must first obtain a written permission from MTELUS' management and a permit from the fire department of the city of Montreal.

Effects coming from fire are not defined as explosives, under the law. Full details on the type of the effect, a sequence plan and a stage plot will be required. A trial test will also be required before the show. In addition, the effects manipulator must have the right level of certification required under the federal law.

In the absence of a permit and a valid certification from the fire departement, management shall prevent the performance from taking place. A fee may be charged for: cleaning and resetting the venue; and any damages caused by the performance.

Ignition source

it is forbidden to produce open flames sparks or heat by means of a device. Candles and paraffin lamps are subject to approval with the Landlord. They should be mounted on noncombustible support and be placed in a container exceeding at least 3.8 cm (1.5 in.) the height of the flame.

HEALTH AND SAFETY

Fireproofing

The Tenant must fireproof all scenic elements used in the leased premises to ensure that all materials pass the flame of a match exposure test, according to the norm NFPA 701, Fire Tests for Flame-Resistant Textiles and Films. Management reserves the right to perform this test at all times to ensure the effectiveness of the fireproofing.

Rigging

The Landlord must approve all types of clashes: Artistic, acrobatic and equipment. In some cases a plan approved by an engineer will be required.

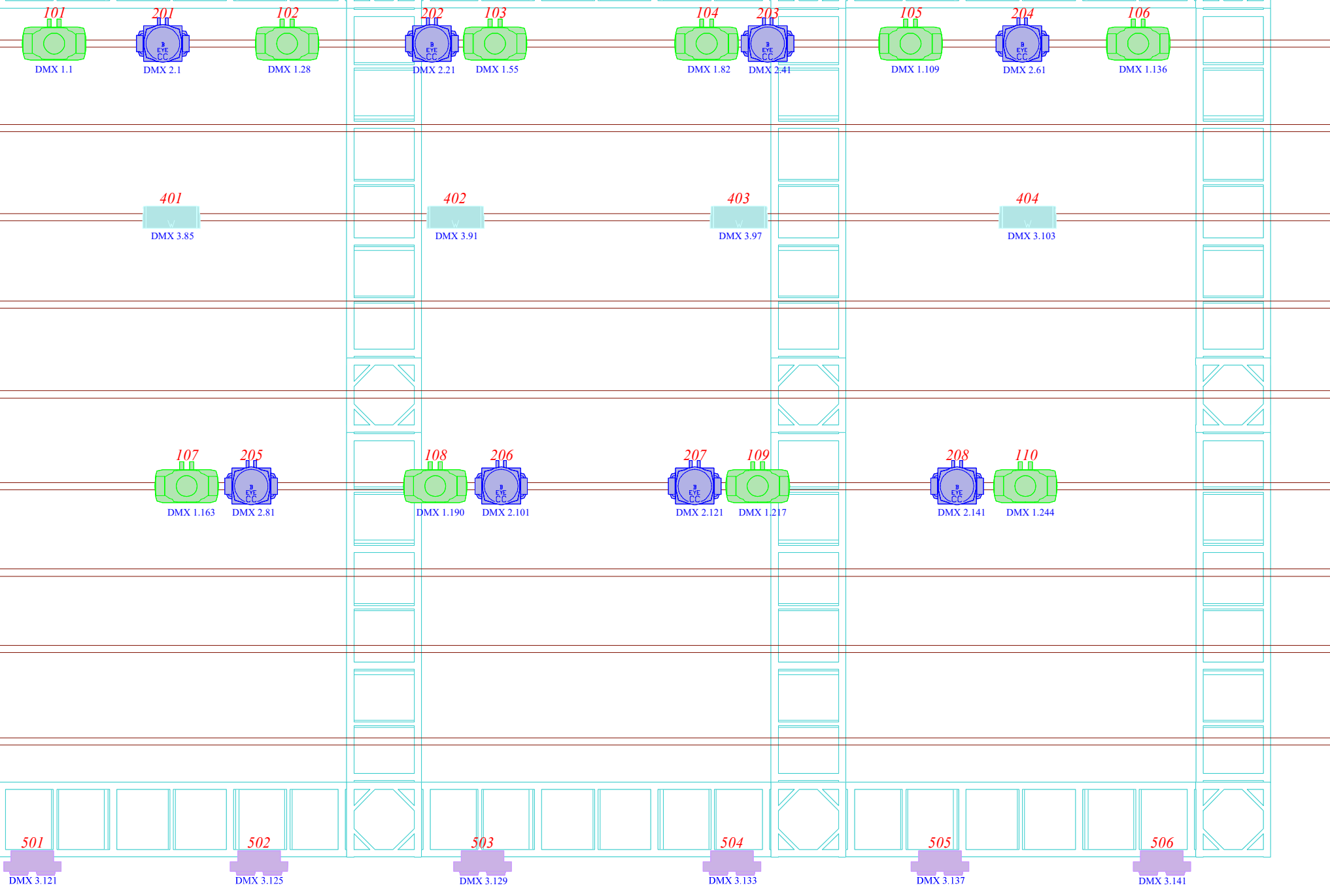
Scene access and safety

For security reasons, access to the scene is only possible in the presence of one or more member of the venues technical staff.

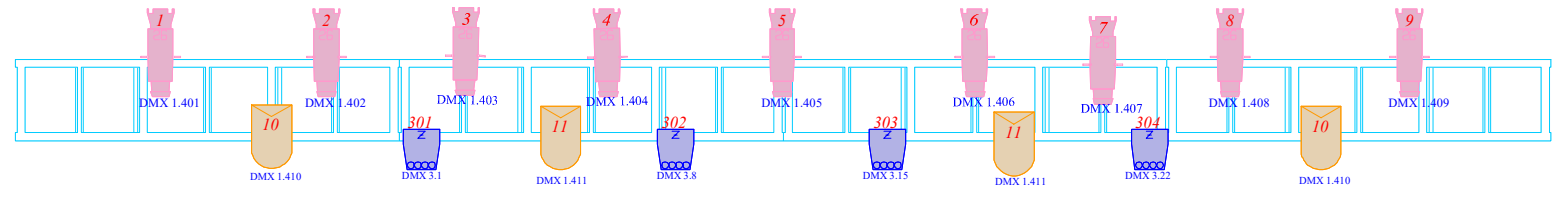
33'-2"

22'-2"

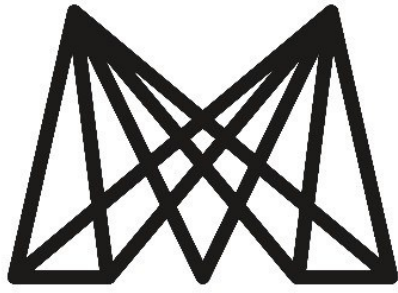
Symbol	Name	Count
	Aleda K10 B-EYE CC	8
	MAC Quantum Profile	10
	Source 4	9
	Colorado 2 Quad Zoom Tour	4
	1000 Watt Moleparcan	4
	Cuepix Blinder WW4	6
	Stormy W	4



TOP STAGE



MTELUS BASIC PLOT

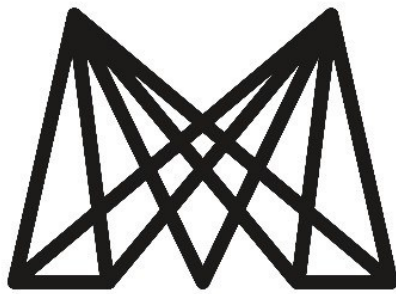


TELUS

QUANTUM 1	1.1	B-EYE 1	2.1
QUANTUM 2	1.28	B-EYE 2	2.21
QUANTUM 3	1.55	B-EYE 3	2.41
QUANTUM 4	1.82	B-EYE 4	2.61
QUANTUM 5	1.109	B-EYE 5	2.81
QUANTUM 6	1.136	B-EYE 6	2.101
QUANTUM 7	1.163	B-EYE 7	2.121
QUANTUM 8	1.190	B-EYE 8	2.141
QUANTUM 9	1.217	B-EYE 9	2.161
QUANTUM 10	1.244	B-EYE 10	2.181
QUANTUM 11	1.271	B-EYE 11	2.201
QUANTUM 12	1.298	B-EYE 12	2.221
QUANTUM 13 (SPARE)	1.325	B-EYE 13 (SPARE)	2.241

Quantum Profile : MODE Extended (27 Channels)

B-EYE K10 CC : MODE (20 Channels)



TELUS

Colorado 1	3.1	Stormy 1	3.85
Colorado 2	3.8	Stormy 2	3.91
Colorado 3	3.15	Stormy 3	3.97
Colorado 4	3.22	Stormy 4	3.103
Colorado 5	3.29	Stormy 5	3.109
Colorado 6	3.36	Stormy 6	3.115
Colorado 7	3.43	Blinder 1	3.121
Colorado 8	3.50	Blinder 2	3.125
Colorado 9	3.57	Blinder 3	3.129
Colorado 10	3.65	Blinder 4	3.133
Colorado 11	3.71	Blinder 5	3.137
Colorado 12	3.78	Blinder 6	3.141
		Blinder 7	3.145
		Blinder 8	3.149

COLORADO 2 : MODE AR2.Z (7 Channels)

STORMY : MODE EXTENDED (6 Channels)

CUEPIX WW4 : MODE (4 Channels)