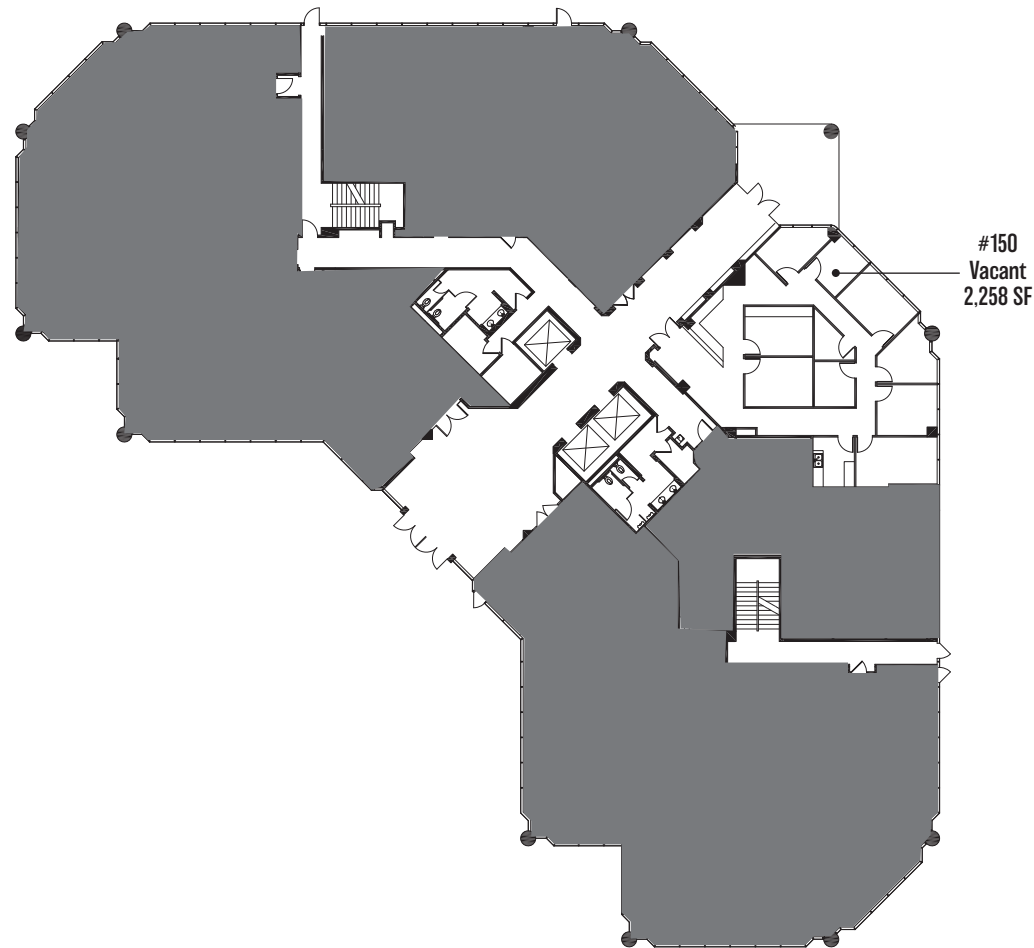


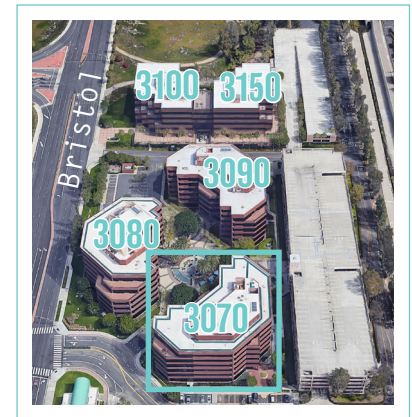
# CANVAS

3070 BRISTOL STREET | COSTA MESA | CA | 92626

## 3070 1st Floor



Building Location



CANVASCOSTAMESA.COM

LEASING

NEWMARK

**Jay Nugent**

CA RE Lic. #01248267

t 949-608-2035

jay.nugent@nmrk.com

**Drew Netherton**

CA RE Lic. #01307669

t 949-608-2084

drew.netherton@nmrk.com

**Andrew Robben**

CA RE Lic. #01372891

t 949-608-2073

andrew.robben@nmrk.com

**Richard Sung**

CA RE Lic. #01953211

t 949-608-2178

richard.sung@nmrk.com

OWNERSHIP



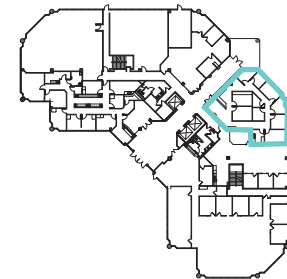
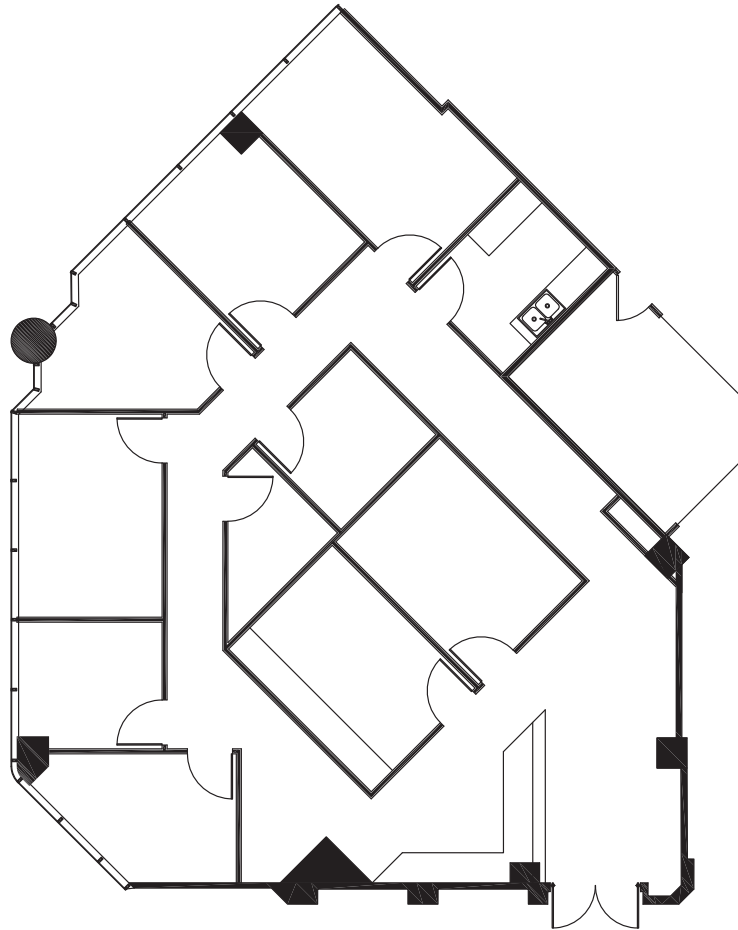
EQ Office

The distributor of this communication is performing acts for which a real estate license is required. The information contained herein has been obtained from sources deemed reliable but has not been verified and no guarantee, warranty or representation, either express or implied, is made with respect to such information. Terms of sale or lease and availability are subject to change or withdrawal without notice. Corporate License #01355491

# CANVAS

3070 BRISTOL STREET | COSTA MESA | CA | 92626

STE 150 - 2,258 SF



[CANVASCOSTAMESA.COM](http://CANVASCOSTAMESA.COM)

LEASING

NEWMARK

**Jay Nugent**

CA RE Lic. #01248267

t 949-608-2035

[jay.nugent@nmrk.com](mailto:jay.nugent@nmrk.com)

**Drew Netherton**

CA RE Lic. #01307669

t 949-608-2084

[drew.netherton@nmrk.com](mailto:drew.netherton@nmrk.com)

**Andrew Robben**

CA RE Lic. #01372891

t 949-608-2073

[andrew.robber@nmrk.com](mailto:andrew.robber@nmrk.com)

**Richard Sung**

CA RE Lic. #01953211

t 949-608-2178

[richard.sung@nmrk.com](mailto:richard.sung@nmrk.com)

OWNERSHIP



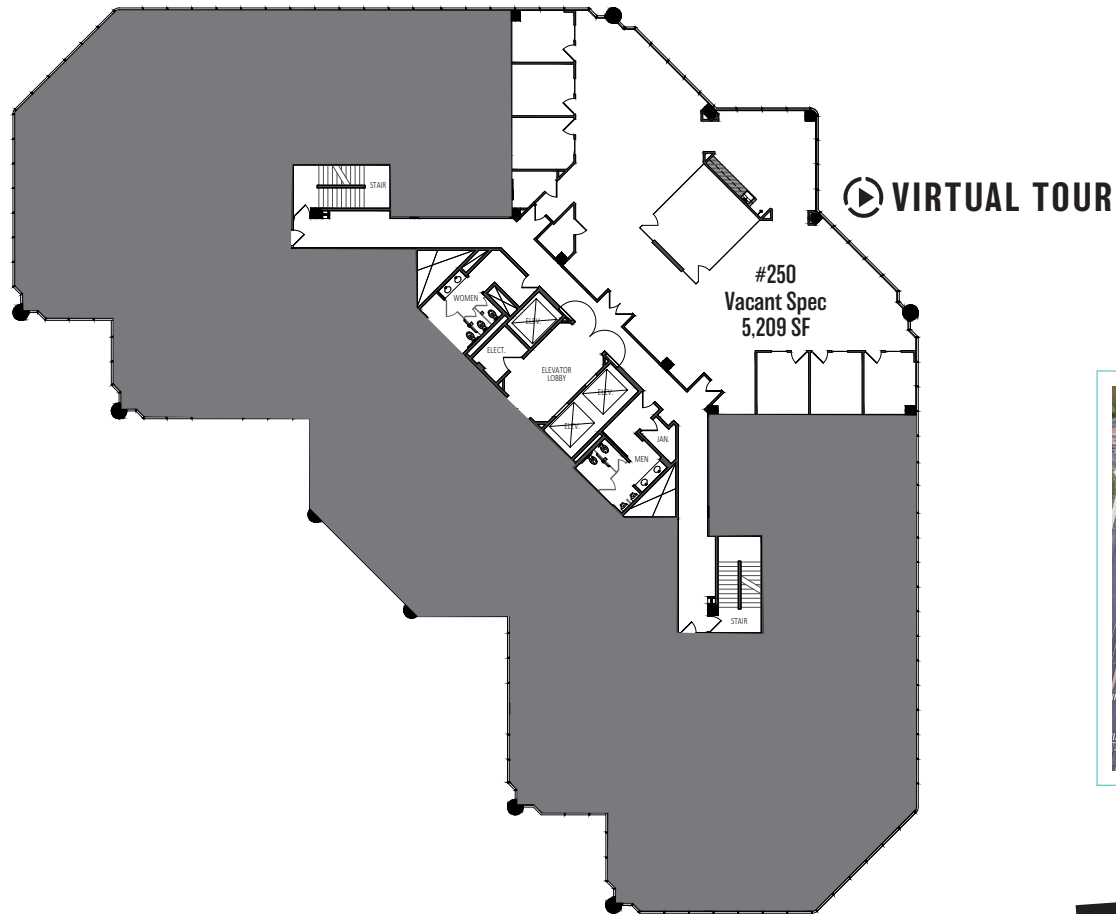
EQ Office

The distributor of this communication is performing acts for which a real estate license is required. The information contained herein has been obtained from sources deemed reliable but has not been verified and no guarantee, warranty or representation, either express or implied, is made with respect to such information. Terms of sale or lease and availability are subject to change or withdrawal without notice. Corporate License #01355491

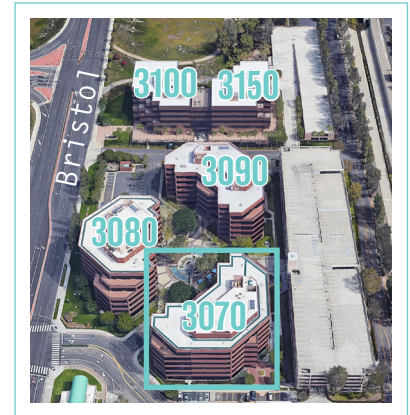
# CANVAS

3070 BRISTOL STREET | COSTA MESA | CA | 92626

## 3070 2nd Floor



Building Location



[CANVASCOSTAMESA.COM](http://CANVASCOSTAMESA.COM)

**Jay Nugent**

CA RE Lic. #01248267

t 949-608-2035

[jay.nugent@nmrk.com](mailto:jay.nugent@nmrk.com)

**Drew Netherton**

CA RE Lic. #01307669

t 949-608-2084

[drew.netherton@nmrk.com](mailto:drew.netherton@nmrk.com)

**Andrew Robben**

CA RE Lic. #01372891

t 949-608-2073

[andrew.robber@nmrk.com](mailto:andrew.robber@nmrk.com)

**Richard Sung**

CA RE Lic. #01953211

t 949-608-2178

[richard.sung@nmrk.com](mailto:richard.sung@nmrk.com)

**OWNERSHIP**



**EQ Office**

**LEASING**

**NEWMARK**

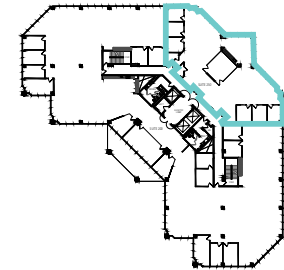
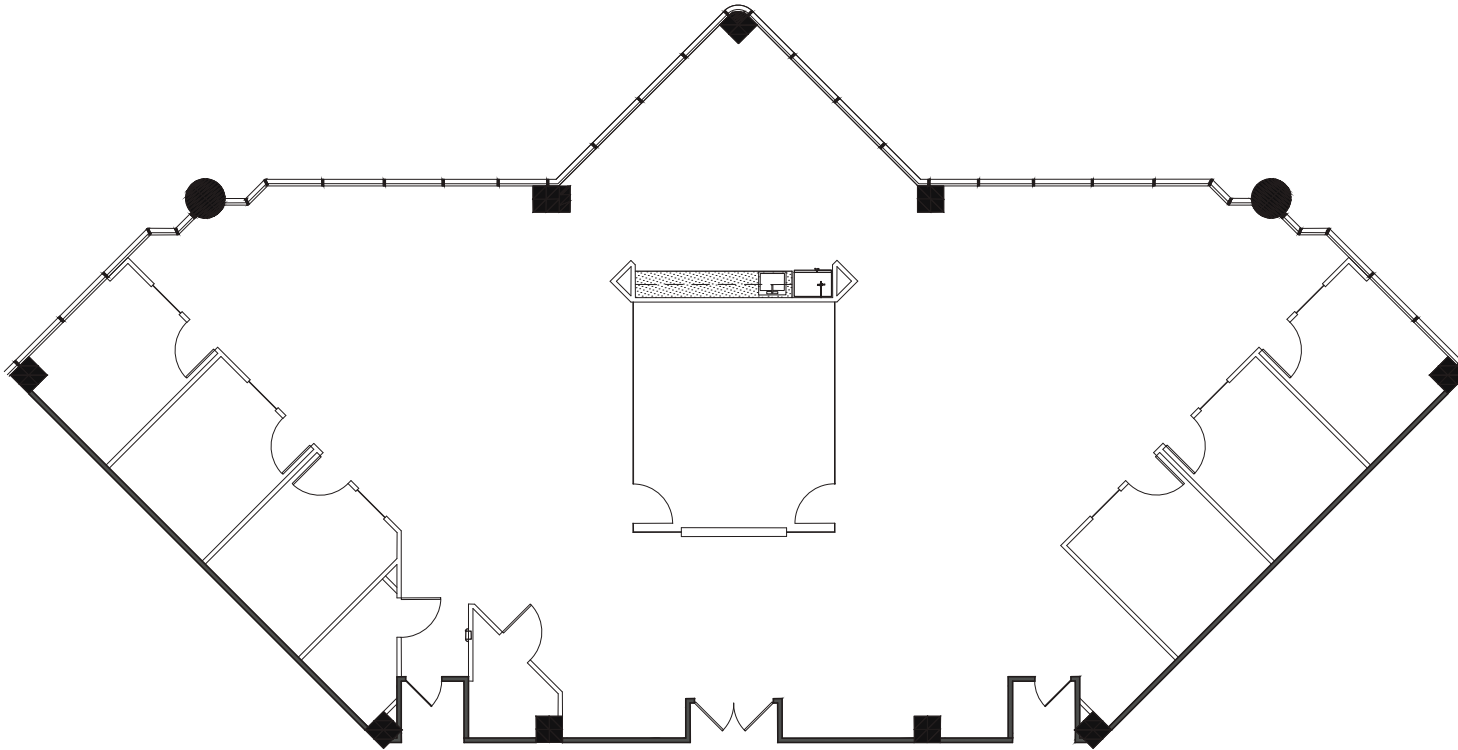
The distributor of this communication is performing acts for which a real estate license is required. The information contained herein has been obtained from sources deemed reliable but has not been verified and no guarantee, warranty or representation, either express or implied, is made with respect to such information. Terms of sale or lease and availability are subject to change or withdrawal without notice. Corporate License #01355491

# CANVAS

3070 BRISTOL STREET | COSTA MESA | CA | 92626

SPEC SUITE - STE 250 - 5,209 SF

CLICK ► TO VIEW VIRTUAL TOUR



CANVASCOSTAMESA.COM

LEASING

NEWMARK

**Jay Nugent**

CA RE Lic. #01248267

t 949-608-2035

jay.nugent@nmrk.com

**Drew Netherton**

CA RE Lic. #01307669

t 949-608-2084

drew.netherton@nmrk.com

**Andrew Robben**

CA RE Lic. #01372891

t 949-608-2073

andrew.robben@nmrk.com

**Richard Sung**

CA RE Lic. #01953211

t 949-608-2178

richard.sung@nmrk.com

OWNERSHIP



EQ Office

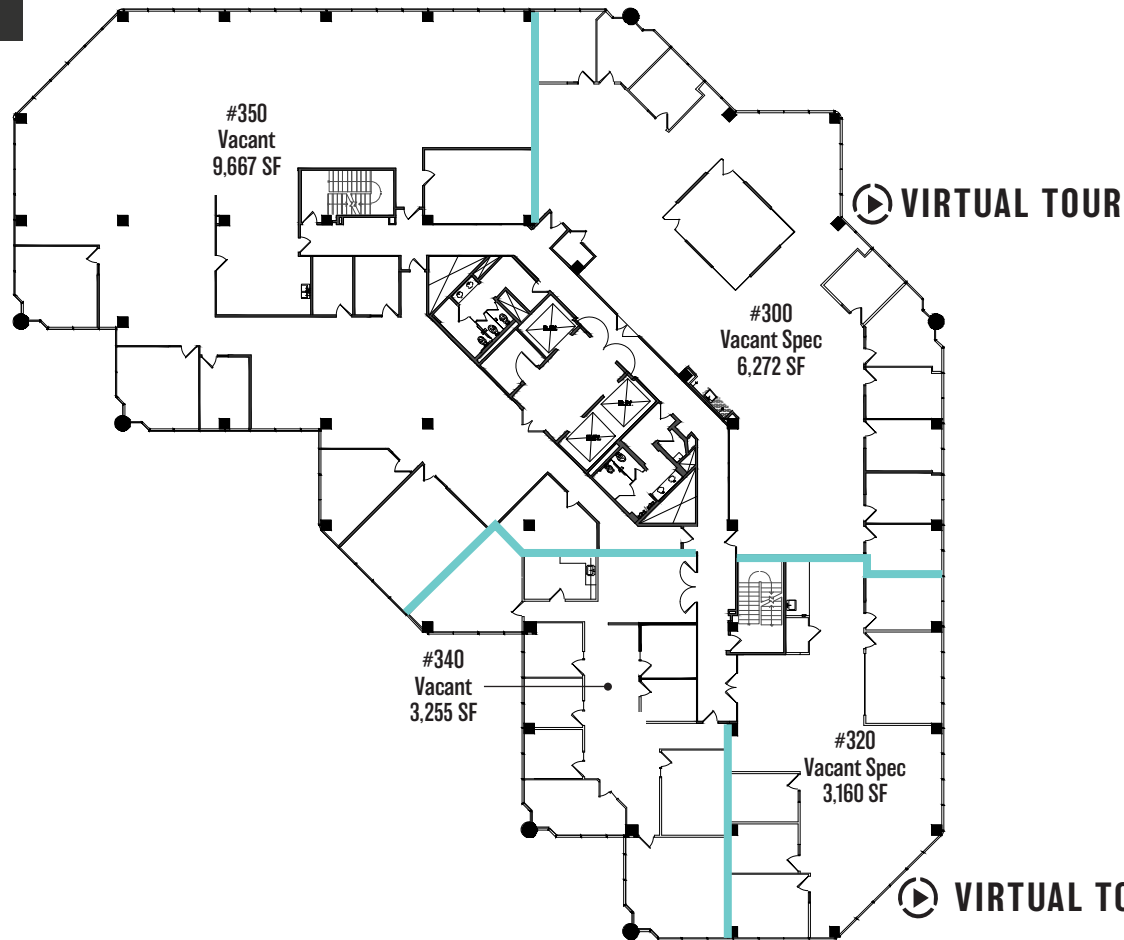
The distributor of this communication is performing acts for which a real estate license is required. The information contained herein has been obtained from sources deemed reliable but has not been verified and no guarantee, warranty or representation, either express or implied, is made with respect to such information. Terms of sale or lease and availability are subject to change or withdrawal without notice. Corporate License #01355491

# CANVAS

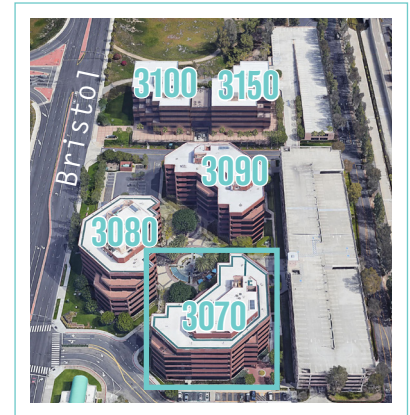
3070 BRISTOL STREET | COSTA MESA | CA | 92626

## 3070 3rd Floor

3,160 - 22,354 SF



Building Location



[CANVASCOSTAMESA.COM](http://CANVASCOSTAMESA.COM)

**Jay Nugent**

CA RE Lic. #01248267

t 949-608-2035

[jay.nugent@nmrk.com](mailto:jay.nugent@nmrk.com)

**Drew Netherton**

CA RE Lic. #01307669

t 949-608-2084

[drew.netherton@nmrk.com](mailto:drew.netherton@nmrk.com)

**Andrew Robben**

CA RE Lic. #01372891

t 949-608-2073

[andrew.robber@nmrk.com](mailto:andrew.robber@nmrk.com)

**Richard Sung**

CA RE Lic. #01953211

t 949-608-2178

[richard.sung@nmrk.com](mailto:richard.sung@nmrk.com)

**OWNERSHIP**



**EQ Office**

**LEASING**

**NEWMARK**

The distributor of this communication is performing acts for which a real estate license is required. The information contained herein has been obtained from sources deemed reliable but has not been verified and no guarantee, warranty or representation, either express or implied, is made with respect to such information. Terms of sale or lease and availability are subject to change or withdrawal without notice. Corporate License #01355491

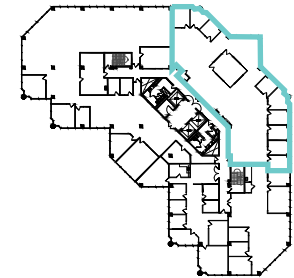
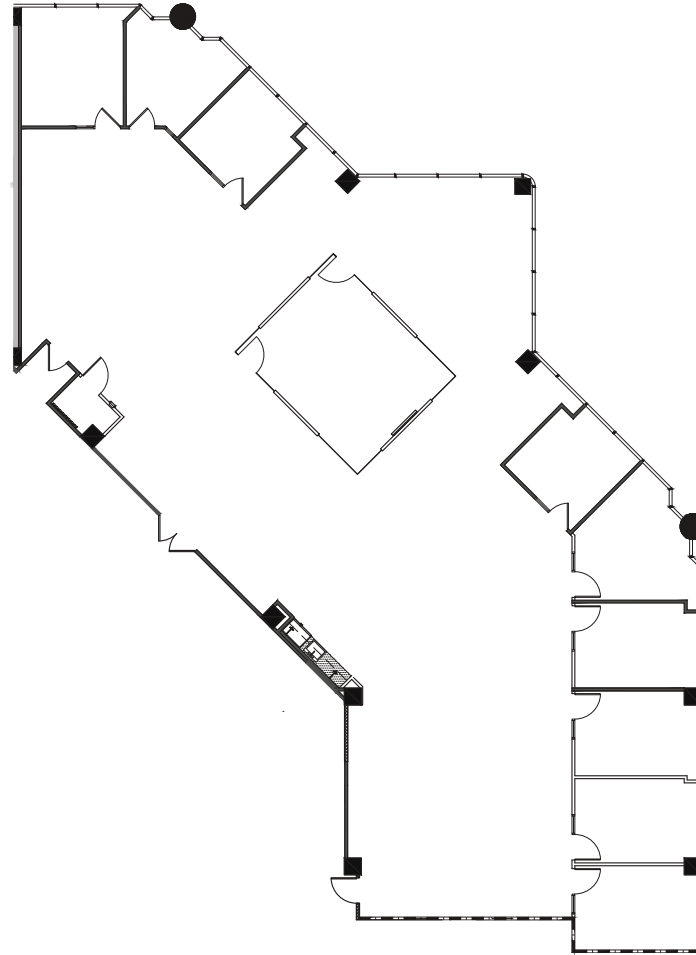


# CANVAS

3070 BRISTOL STREET | COSTA MESA | CA | 92626

SPEC SUITE - STE 300 - 6,272 SF

CLICK ► TO VIEW VIRTUAL TOUR



CANVASCOSTAMESA.COM

LEASING

NEWMARK

**Jay Nugent**

CA RE Lic. #01248267  
t 949-608-2035  
jay.nugent@nmrk.com

**Drew Netherton**

CA RE Lic. #01307669  
t 949-608-2084  
drew.netherton@nmrk.com

**Andrew Robben**

CA RE Lic. #01372891  
t 949-608-2073  
andrew.robbe@nmrk.com

**Richard Sung**

CA RE Lic. #01953211  
t 949-608-2178  
richard.sung@nmrk.com

OWNERSHIP



EQ Office

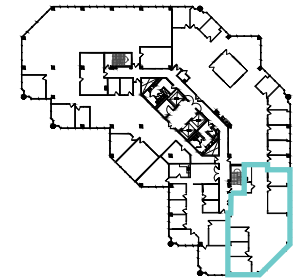
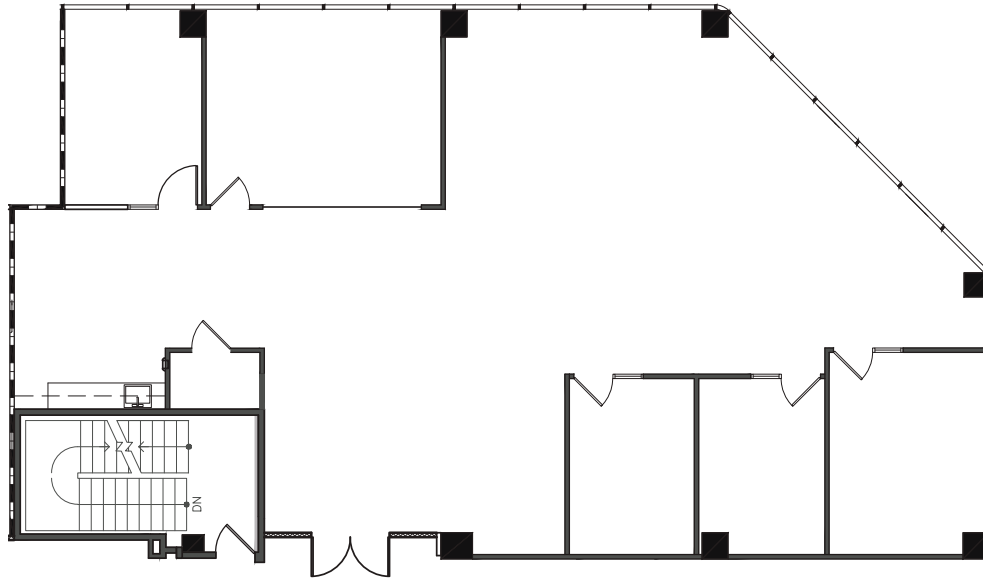
The distributor of this communication is performing acts for which a real estate license is required. The information contained herein has been obtained from sources deemed reliable but has not been verified and no guarantee, warranty or representation, either express or implied, is made with respect to such information. Terms of sale or lease and availability are subject to change or withdrawal without notice. Corporate License #01355491

# CANVAS

3070 BRISTOL STREET | COSTA MESA | CA | 92626

SPEC SUITE - STE 320 - 3,160 SF

CLICK  TO VIEW VIRTUAL TOUR



CANVASCOSTAMESA.COM

LEASING

NEWMARK

**Jay Nugent**

CA RE Lic. #01248267  
t 949-608-2035  
jay.nugent@nmrk.com

**Drew Netherton**

CA RE Lic. #01307669  
t 949-608-2084  
drew.netherton@nmrk.com

**Andrew Robben**

CA RE Lic. #01372891  
t 949-608-2073  
andrew.robben@nmrk.com

**Richard Sung**

CA RE Lic. #01953211  
t 949-608-2178  
richard.sung@nmrk.com

OWNERSHIP



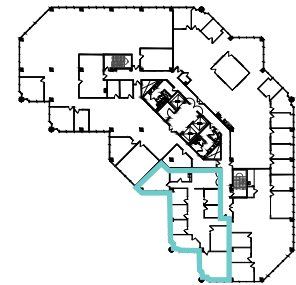
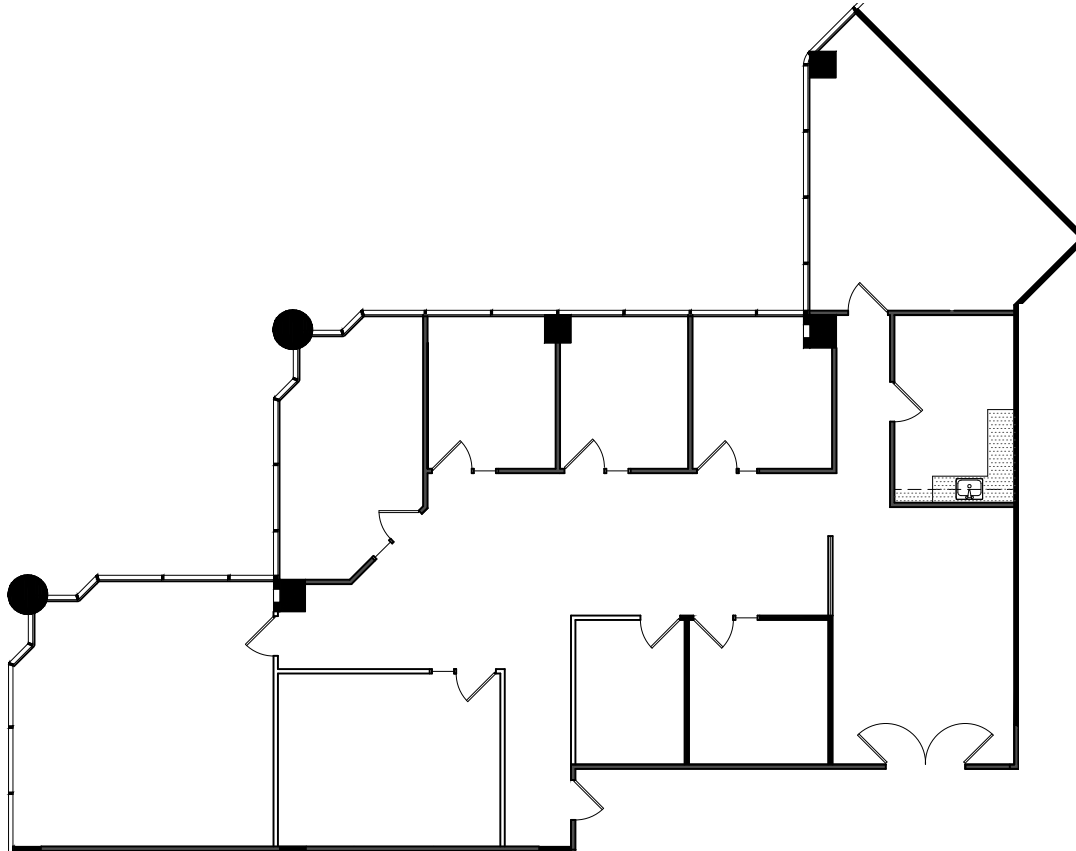
EQ Office

The distributor of this communication is performing acts for which a real estate license is required. The information contained herein has been obtained from sources deemed reliable but has not been verified and no guarantee, warranty or representation, either express or implied, is made with respect to such information. Terms of sale or lease and availability are subject to change or withdrawal without notice. Corporate License #01355491

# CANVAS

3070 BRISTOL STREET | COSTA MESA | CA | 92626

STE 340 - 3,255 SF



CANVASCOSTAMESA.COM

LEASING

NEWMARK

**Jay Nugent**

CA RE Lic. #01248267

t 949-608-2035

jay.nugent@nmrk.com

**Drew Netherton**

CA RE Lic. #01307669

t 949-608-2084

drew.netherton@nmrk.com

**Andrew Robben**

CA RE Lic. #01372891

t 949-608-2073

andrew.robben@nmrk.com

**Richard Sung**

CA RE Lic. #01953211

t 949-608-2178

richard.sung@nmrk.com

OWNERSHIP



EQ Office

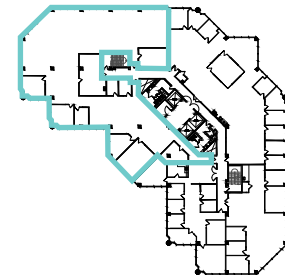
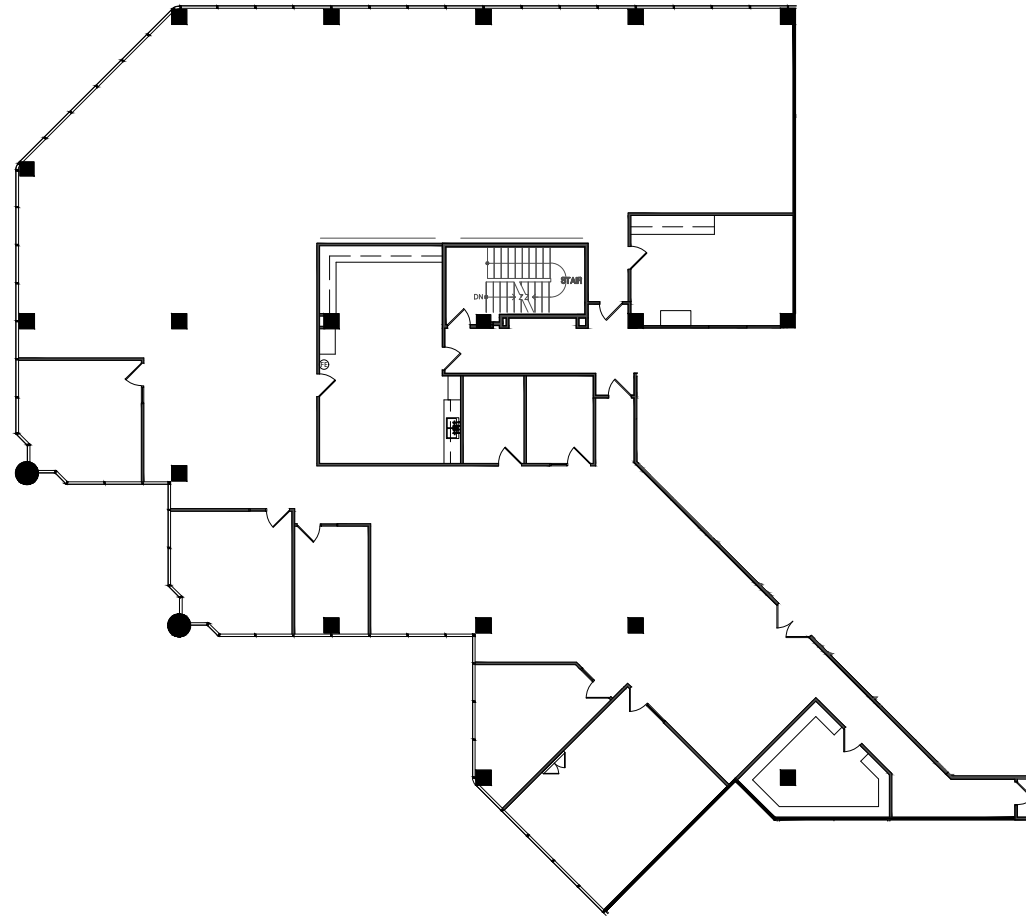
The distributor of this communication is performing acts for which a real estate license is required. The information contained herein has been obtained from sources deemed reliable but has not been verified and no guarantee, warranty or representation, either express or implied, is made with respect to such information. Terms of sale or lease and availability are subject to change or withdrawal without notice. Corporate License #01355491



# CANVAS

3070 BRISTOL STREET | COSTA MESA | CA | 92626

STE 350 - 9,667 SF



CANVASCOSTAMESA.COM

## Jay Nugent

CA RE Lic. #01248267

t 949-608-2035

jay.nugent@nmrk.com

## Drew Netherton

CA RE Lic. #01307669

t 949-608-2084

drew.netherton@nmrk.com

## Andrew Robben

CA RE Lic. #01372891

t 949-608-2073

andrew.robben@nmrk.com

## Richard Sung

CA RE Lic. #01953211

t 949-608-2178

richard.sung@nmrk.com

OWNERSHIP



EQ Office

LEASING

NEWMARK

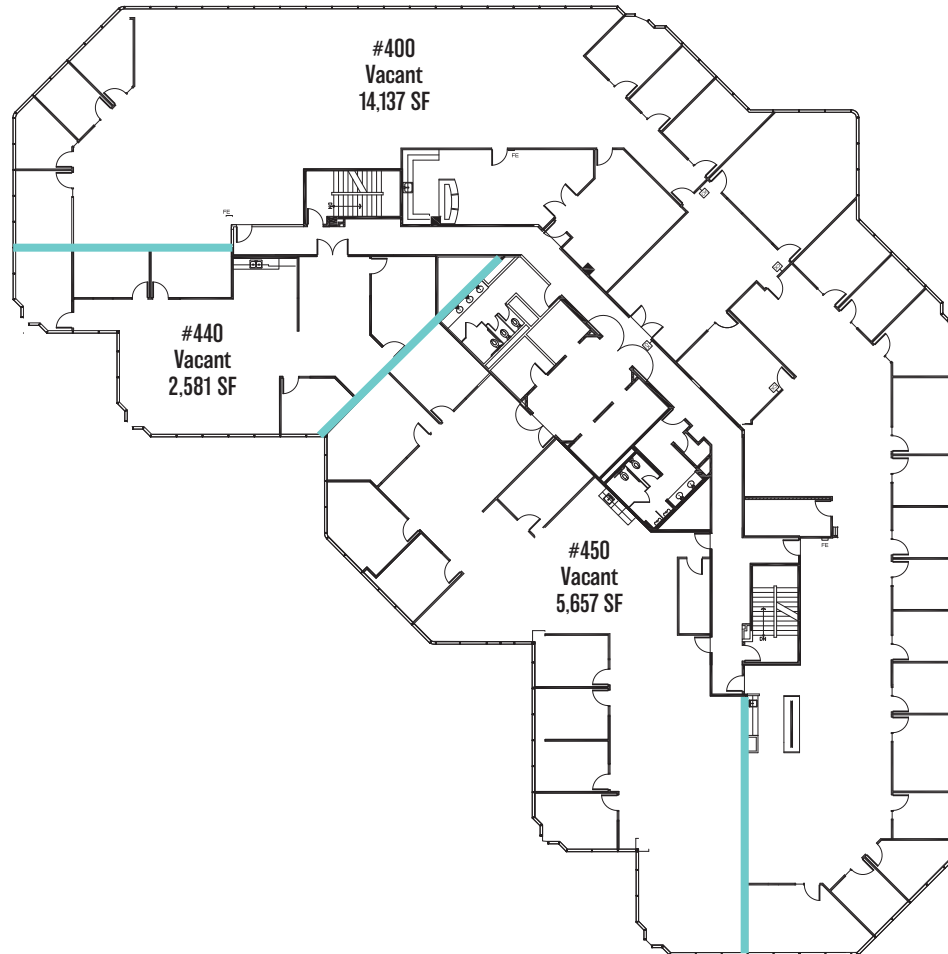
The distributor of this communication is performing acts for which a real estate license is required. The information contained herein has been obtained from sources deemed reliable but has not been verified and no guarantee, warranty or representation, either express or implied, is made with respect to such information. Terms of sale or lease and availability are subject to change or withdrawal without notice. Corporate License #01355491

# CANVAS

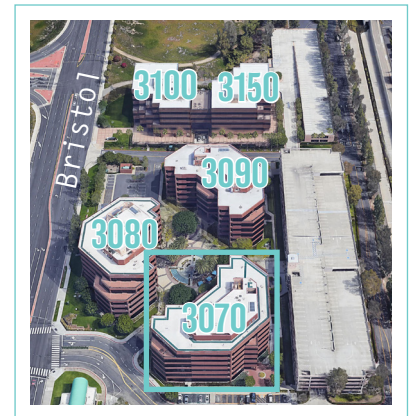
3070 BRISTOL STREET | COSTA MESA | CA | 92626

## 3070 4th Floor

2,581 - 22,375 SF



Building Location



CANVASCOSTAMESA.COM

**Jay Nugent**

CA RE Lic. #01248267

t 949-608-2035

jay.nugent@nmrk.com

**Drew Netherton**

CA RE Lic. #01307669

t 949-608-2084

drew.netherton@nmrk.com

**Andrew Robben**

CA RE Lic. #01372891

t 949-608-2073

andrew.robbe@nmrk.com

**Richard Sung**

CA RE Lic. #01953211

t 949-608-2178

richard.sung@nmrk.com

OWNERSHIP



EQ Office

LEASING

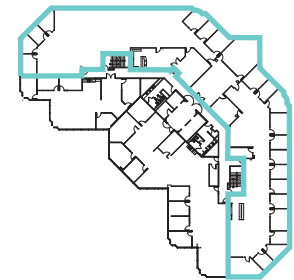
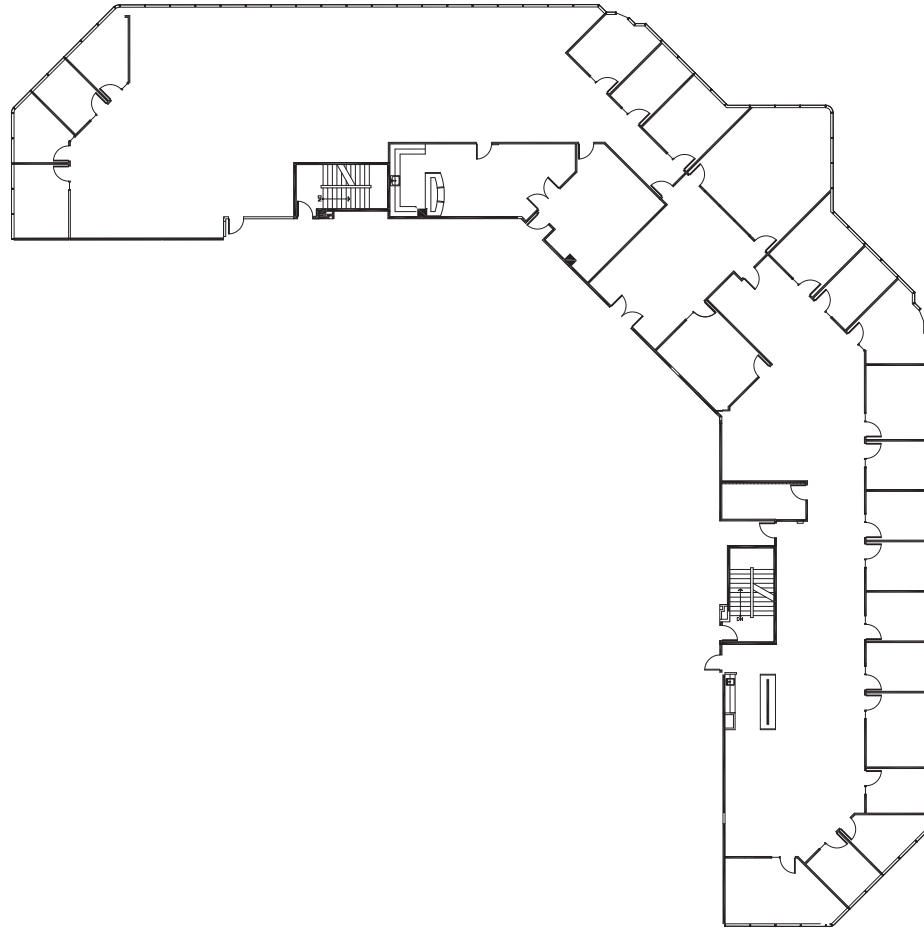
NEWMARK

The distributor of this communication is performing acts for which a real estate license is required. The information contained herein has been obtained from sources deemed reliable but has not been verified and no guarantee, warranty or representation, either express or implied, is made with respect to such information. Terms of sale or lease and availability are subject to change or withdrawal without notice. Corporate License #01355491

# CANVAS

3070 BRISTOL STREET | COSTA MESA | CA | 92626

STE 400 - 14,137 SF



[CANVASCOSTAMESA.COM](http://CANVASCOSTAMESA.COM)

LEASING

NEWMARK

**Jay Nugent**

CA RE Lic. #01248267  
t 949-608-2035  
[jay.nugent@nrmk.com](mailto:jay.nugent@nrmk.com)

**Drew Netherton**

CA RE Lic. #01307669  
t 949-608-2084  
[drew.netherton@nrmk.com](mailto:drew.netherton@nrmk.com)

**Andrew Robben**

CA RE Lic. #01372891  
t 949-608-2073  
[andrew.robbe@nrmk.com](mailto:andrew.robbe@nrmk.com)

**Richard Sung**

CA RE Lic. #01953211  
t 949-608-2178  
[richard.sung@nrmk.com](mailto:richard.sung@nrmk.com)

OWNERSHIP



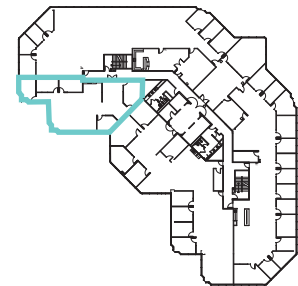
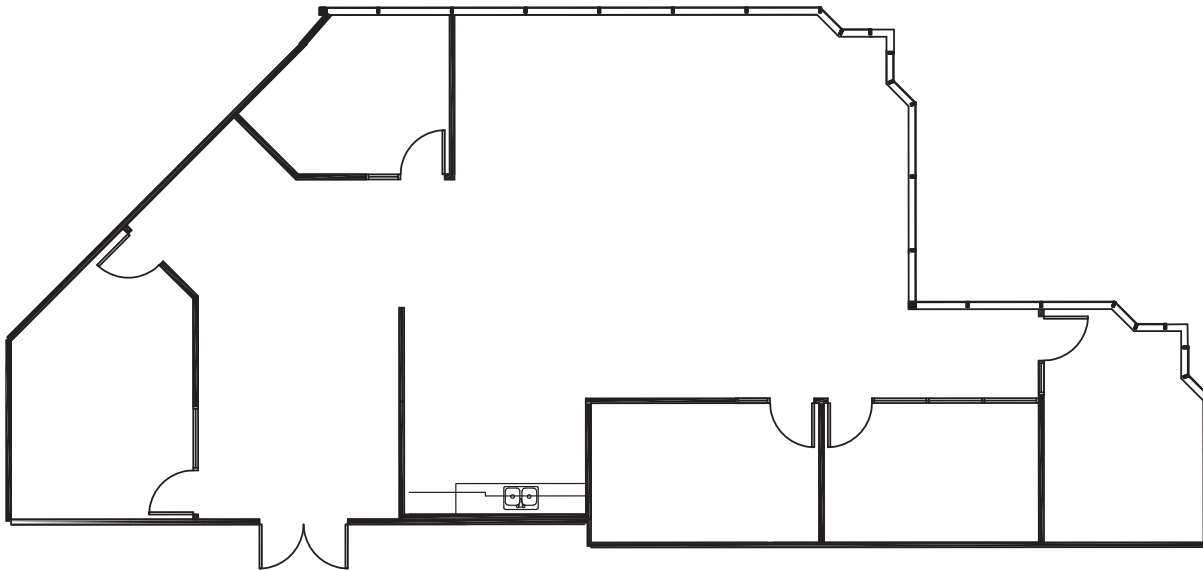
EQ Office

The distributor of this communication is performing acts for which a real estate license is required. The information contained herein has been obtained from sources deemed reliable but has not been verified and no guarantee, warranty or representation, either express or implied, is made with respect to such information. Terms of sale or lease and availability are subject to change or withdrawal without notice. Corporate License #01355491

# CANVAS

3070 BRISTOL STREET | COSTA MESA | CA | 92626

STE 440 - 2,581 SF



[CANVASCOSTAMESA.COM](http://CANVASCOSTAMESA.COM)

LEASING

NEWMARK

**Jay Nugent**

CA RE Lic. #01248267  
t 949-608-2035  
jay.nugent@nmrk.com

**Drew Netherton**

CA RE Lic. #01307669  
t 949-608-2084  
drew.netherton@nmrk.com

**Andrew Robben**

CA RE Lic. #01372891  
t 949-608-2073  
andrew.robben@nmrk.com

**Richard Sung**

CA RE Lic. #01953211  
t 949-608-2178  
richard.sung@nmrk.com

OWNERSHIP



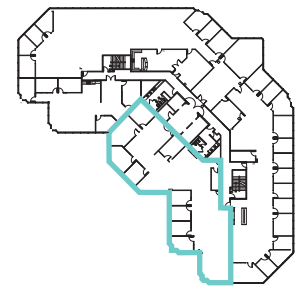
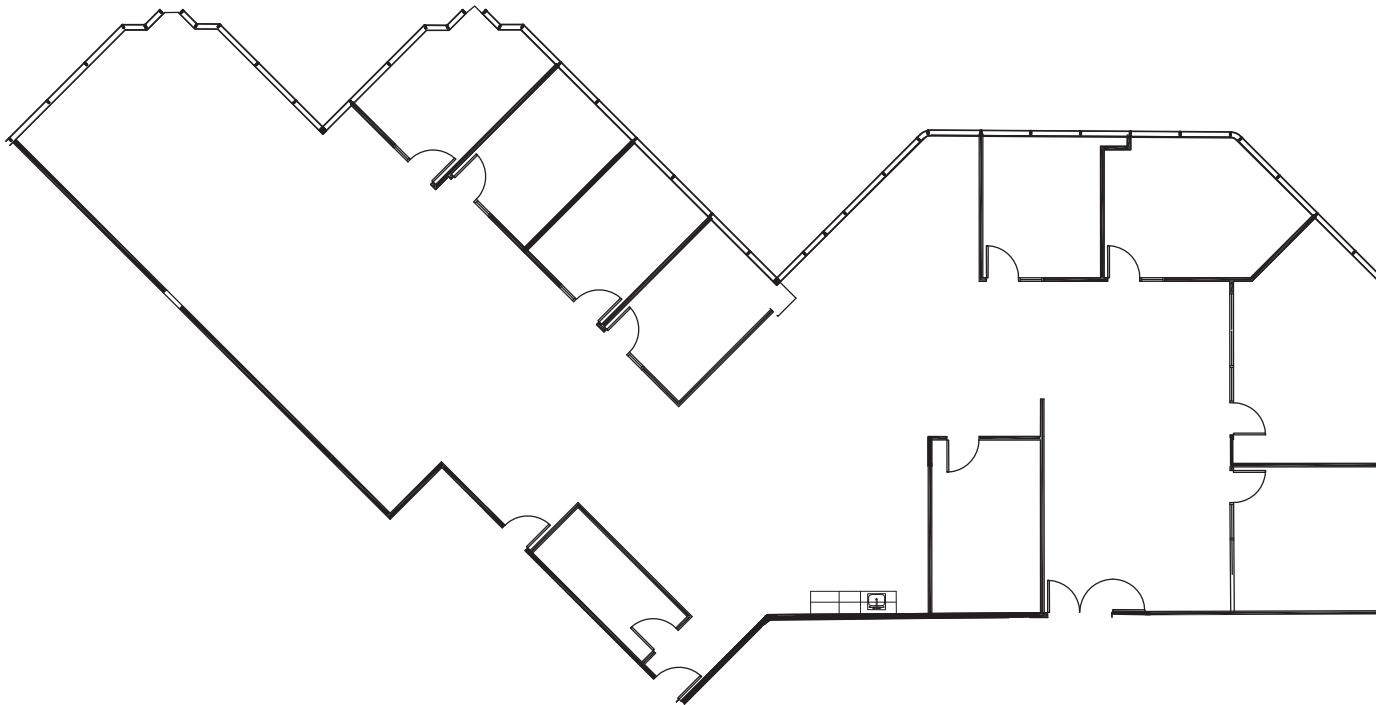
EQ Office

The distributor of this communication is performing acts for which a real estate license is required. The information contained herein has been obtained from sources deemed reliable but has not been verified and no guarantee, warranty or representation, either express or implied, is made with respect to such information. Terms of sale or lease and availability are subject to change or withdrawal without notice. Corporate License #01355491

# CANVAS

3070 BRISTOL STREET | COSTA MESA | CA | 92626

STE 450 - 5,657 SF



[CANVASCOSTAMESA.COM](http://CANVASCOSTAMESA.COM)

LEASING

NEWMARK

**Jay Nugent**

CA RE Lic. #01248267

t 949-608-2035

[jay.nugent@nmrk.com](mailto:jay.nugent@nmrk.com)

**Drew Netherton**

CA RE Lic. #01307669

t 949-608-2084

[drew.netherton@nmrk.com](mailto:drew.netherton@nmrk.com)

**Andrew Robben**

CA RE Lic. #01372891

t 949-608-2073

[andrew.robben@nmrk.com](mailto:andrew.robben@nmrk.com)

**Richard Sung**

CA RE Lic. #01953211

t 949-608-2178

[richard.sung@nmrk.com](mailto:richard.sung@nmrk.com)

OWNERSHIP



EQ Office

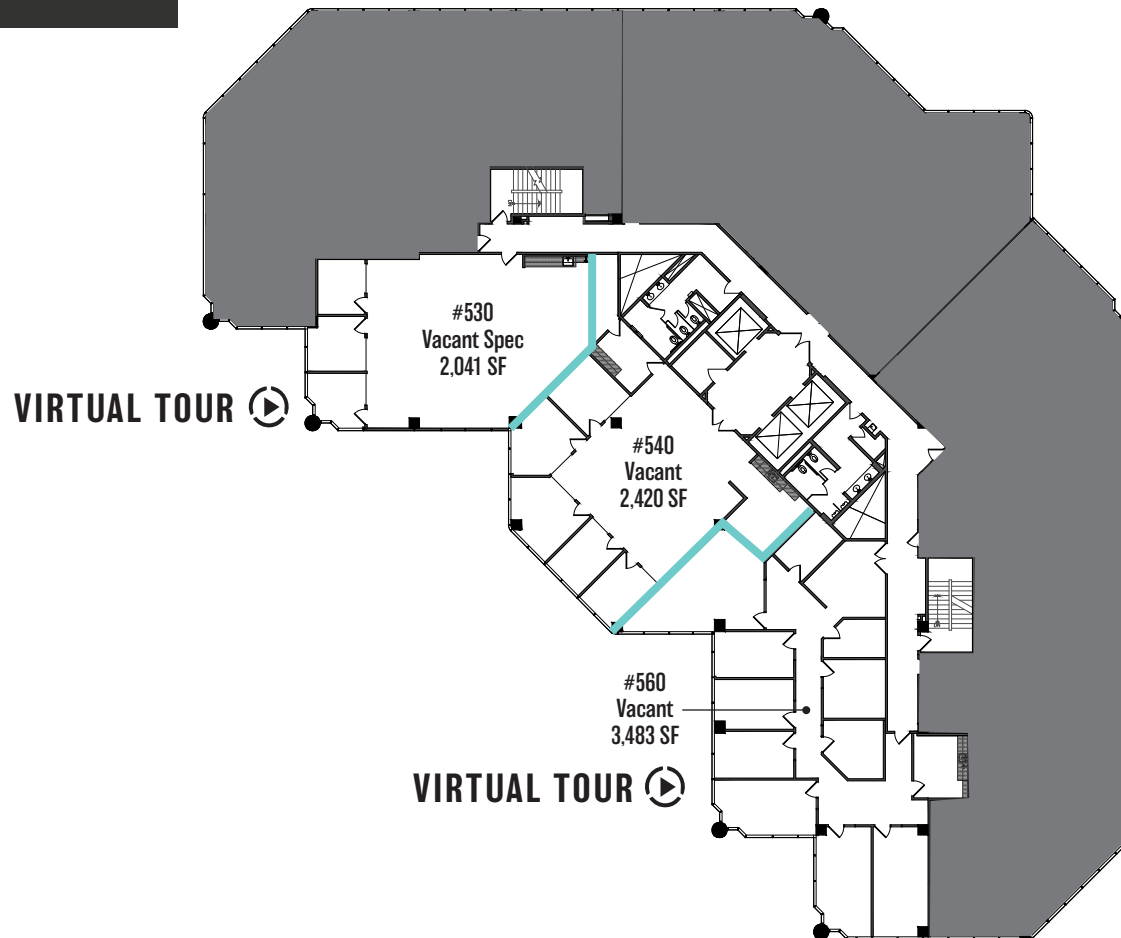
The distributor of this communication is performing acts for which a real estate license is required. The information contained herein has been obtained from sources deemed reliable but has not been verified and no guarantee, warranty or representation, either express or implied, is made with respect to such information. Terms of sale or lease and availability are subject to change or withdrawal without notice. Corporate License #01355491

# CANVAS

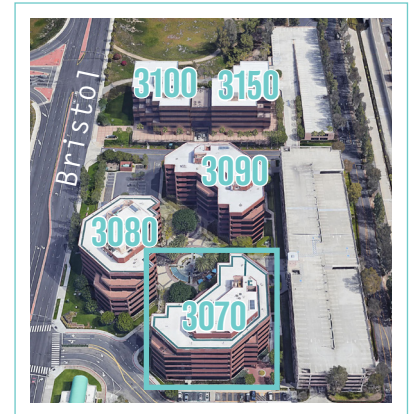
3070 BRISTOL STREET | COSTA MESA | CA | 92626

## 3070 5th Floor

2,041 - 7,944 SF



Building Location



CANVASCOSTAMESA.COM

**Jay Nugent**

CA RE Lic. #01248267

t 949-608-2035

jay.nugent@nmrk.com

**Drew Netherton**

CA RE Lic. #01307669

t 949-608-2084

drew.netherton@nmrk.com

**Andrew Robben**

CA RE Lic. #01372891

t 949-608-2073

andrew.robbe@nmrk.com

**Richard Sung**

CA RE Lic. #01953211

t 949-608-2178

richard.sung@nmrk.com

OWNERSHIP



EQ Office

LEASING

NEWMARK

The distributor of this communication is performing acts for which a real estate license is required. The information contained herein has been obtained from sources deemed reliable but has not been verified and no guarantee, warranty or representation, either express or implied, is made with respect to such information. Terms of sale or lease and availability are subject to change or withdrawal without notice.  
Corporate License #01355491

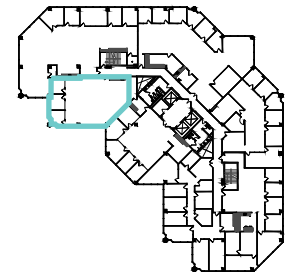
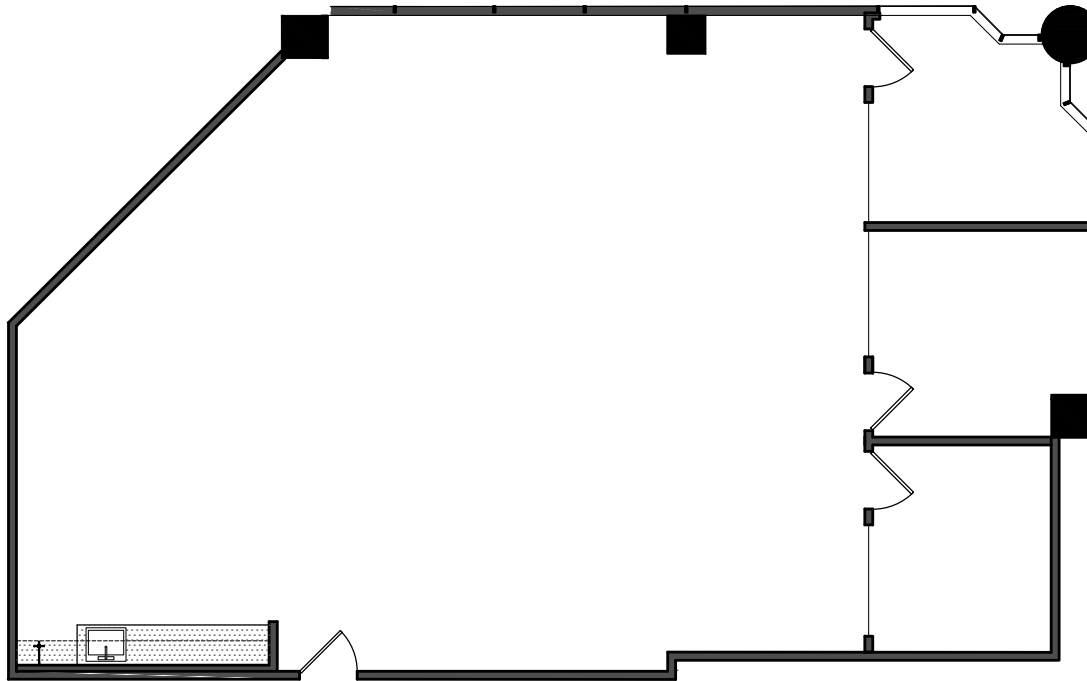


# CANVAS

3070 BRISTOL STREET | COSTA MESA | CA | 92626

SPEC SUITE - STE 530 - 2,041 SF

CLICK ► TO VIEW VIRTUAL TOUR



CANVASCOSTAMESA.COM

LEASING

NEWMARK

**Jay Nugent**

CA RE Lic. #01248267

t 949-608-2035

jay.nugent@nmrk.com

**Drew Netherton**

CA RE Lic. #01307669

t 949-608-2084

drew.netherton@nmrk.com

**Andrew Robben**

CA RE Lic. #01372891

t 949-608-2073

andrew.robben@nmrk.com

**Richard Sung**

CA RE Lic. #01953211

t 949-608-2178

richard.sung@nmrk.com

OWNERSHIP



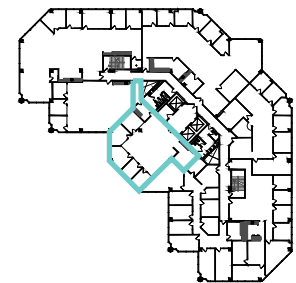
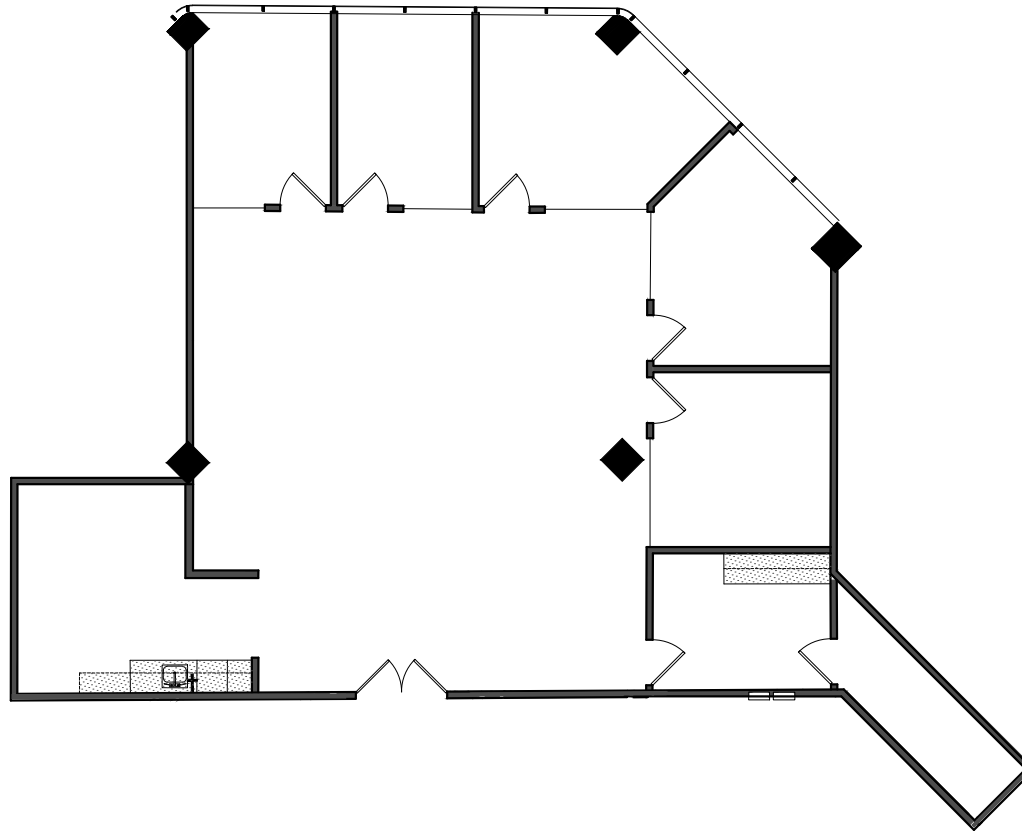
EQ Office

The distributor of this communication is performing acts for which a real estate license is required. The information contained herein has been obtained from sources deemed reliable but has not been verified and no guarantee, warranty or representation, either express or implied, is made with respect to such information. Terms of sale or lease and availability are subject to change or withdrawal without notice. Corporate License #01355491

# CANVAS

3070 BRISTOL STREET | COSTA MESA | CA | 92626

STE 540 - 2,420 SF



[CANVASCOSTAMESA.COM](http://CANVASCOSTAMESA.COM)

LEASING

NEWMARK

**Jay Nugent**

CA RE Lic. #01248267

t 949-608-2035

[jay.nugent@nmrk.com](mailto:jay.nugent@nmrk.com)

**Drew Netherton**

CA RE Lic. #01307669

t 949-608-2084

[drew.netherton@nmrk.com](mailto:drew.netherton@nmrk.com)

**Andrew Robben**

CA RE Lic. #01372891

t 949-608-2073

[andrew.robber@nmrk.com](mailto:andrew.robber@nmrk.com)

**Richard Sung**

CA RE Lic. #01953211

t 949-608-2178

[richard.sung@nmrk.com](mailto:richard.sung@nmrk.com)

OWNERSHIP



EQ Office

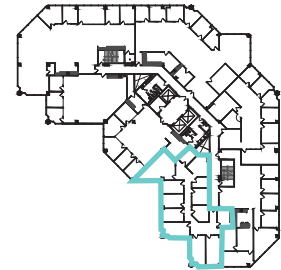
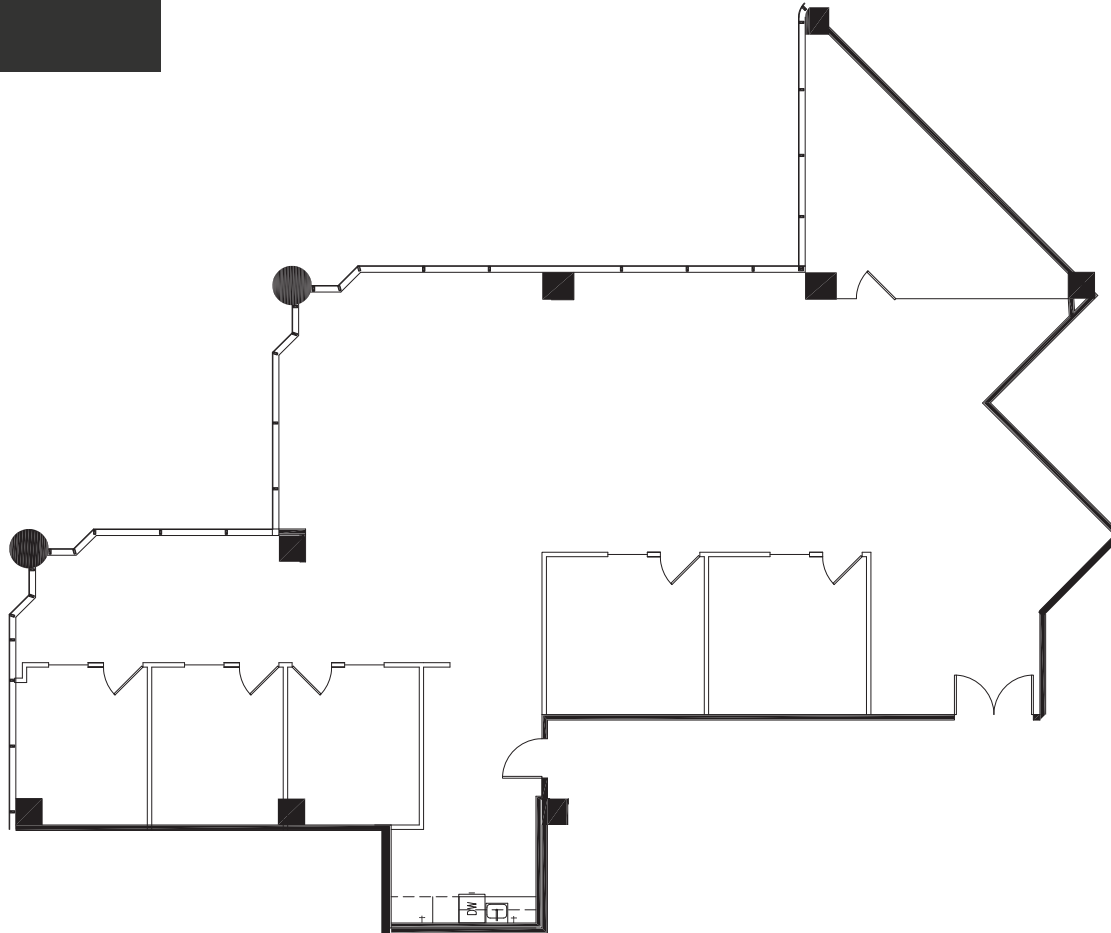
The distributor of this communication is performing acts for which a real estate license is required. The information contained herein has been obtained from sources deemed reliable but has not been verified and no guarantee, warranty or representation, either express or implied, is made with respect to such information. Terms of sale or lease and availability are subject to change or withdrawal without notice. Corporate License #01355491

# CANVAS

3070 BRISTOL STREET | COSTA MESA | CA | 92626

STE 560 - 3,483 SF

CLICK ► TO VIEW VIRTUAL TOUR



CANVASCOSTAMESA.COM

LEASING

NEWMARK

**Jay Nugent**

CA RE Lic. #01248267

t 949-608-2035

jay.nugent@nmrk.com

**Drew Netherton**

CA RE Lic. #01307669

t 949-608-2084

drew.netherton@nmrk.com

**Andrew Robben**

CA RE Lic. #01372891

t 949-608-2073

andrew.robben@nmrk.com

**Richard Sung**

CA RE Lic. #01953211

t 949-608-2178

richard.sung@nmrk.com

OWNERSHIP



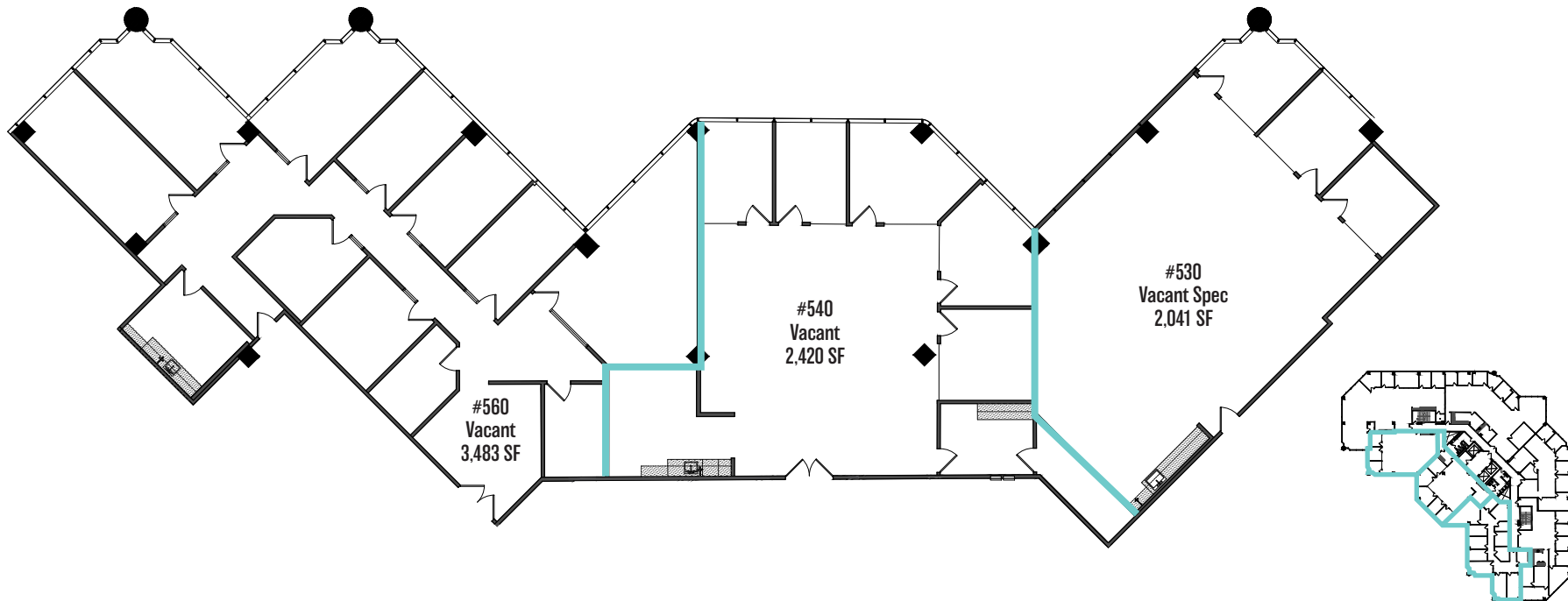
EQ Office

The distributor of this communication is performing acts for which a real estate license is required. The information contained herein has been obtained from sources deemed reliable but has not been verified and no guarantee, warranty or representation, either express or implied, is made with respect to such information. Terms of sale or lease and availability are subject to change or withdrawal without notice. Corporate License #01355491

# CANVAS

3070 BRISTOL STREET | COSTA MESA | CA | 92626

7,944 SF CONTIGUOUS



CANVASCOSTAMESA.COM

LEASING

NEWMARK

**Jay Nugent**

CA RE Lic. #01248267

t 949-608-2035

jay.nugent@nmrk.com

**Drew Netherton**

CA RE Lic. #01307669

t 949-608-2084

drew.netherton@nmrk.com

**Andrew Robben**

CA RE Lic. #01372891

t 949-608-2073

andrew.robber@nmrk.com

**Richard Sung**

CA RE Lic. #01953211

t 949-608-2178

richard.sung@nmrk.com

OWNERSHIP



EQ Office

The distributor of this communication is performing acts for which a real estate license is required. The information contained herein has been obtained from sources deemed reliable but has not been verified and no guarantee, warranty or representation, either express or implied, is made with respect to such information. Terms of sale or lease and availability are subject to change or withdrawal without notice.  
Corporate License #01355491

# CANVAS

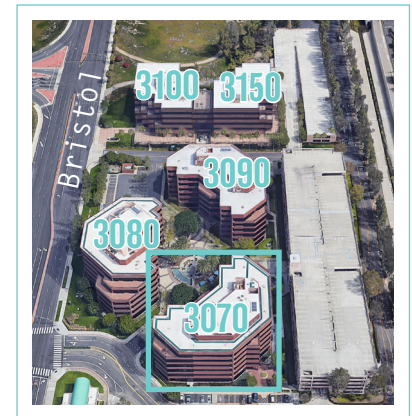
3070 BRISTOL STREET | COSTA MESA | CA | 92626

3070 6th Floor



 VIRTUAL TOUR

Building Location



CANVASCOSTAMESA.COM

**Jay Nugent**

CA RE Lic. #01248267

t 949-608-2035

jay.nugent@nmrk.com

**Drew Netherton**

CA RE Lic. #01307669

t 949-608-2084

drew.netherton@nmrk.com

**Andrew Robben**

CA RE Lic. #01372891

t 949-608-2073

andrew.robben@nmrk.com

**Richard Sung**

CA RE Lic. #01953211

t 949-608-2178

richard.sung@nmrk.com

OWNERSHIP



EQ Office

LEASING

NEWMARK

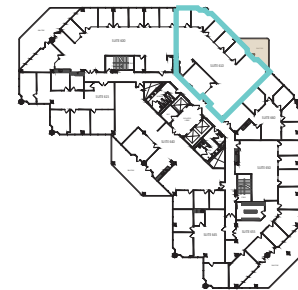
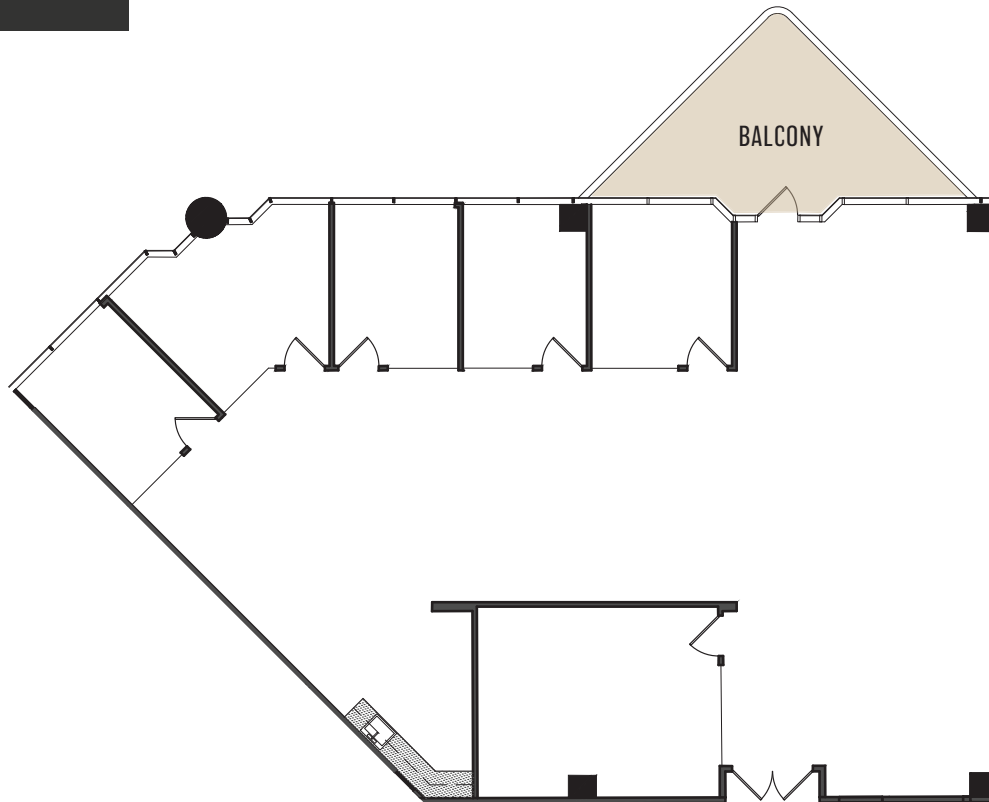
The distributor of this communication is performing acts for which a real estate license is required. The information contained herein has been obtained from sources deemed reliable but has not been verified and no guarantee, warranty or representation, either express or implied, is made with respect to such information. Terms of sale or lease and availability are subject to change or withdrawal without notice. Corporate License #01355491

# CANVAS

3070 BRISTOL STREET | COSTA MESA | CA | 92626

SPEC SUITE - STE 600 - 3,366 SF

CLICK  TO VIEW VIRTUAL TOUR



CANVASCOSTAMESA.COM

LEASING

NEWMARK

**Jay Nugent**

CA RE Lic. #01248267

t 949-608-2035

jay.nugent@nmrk.com

**Drew Netherton**

CA RE Lic. #01307669

t 949-608-2084

drew.netherton@nmrk.com

**Andrew Robben**

CA RE Lic. #01372891

t 949-608-2073

andrew.robber@nmrk.com

**Richard Sung**

CA RE Lic. #01953211

t 949-608-2178

richard.sung@nmrk.com

OWNERSHIP



EQ Office

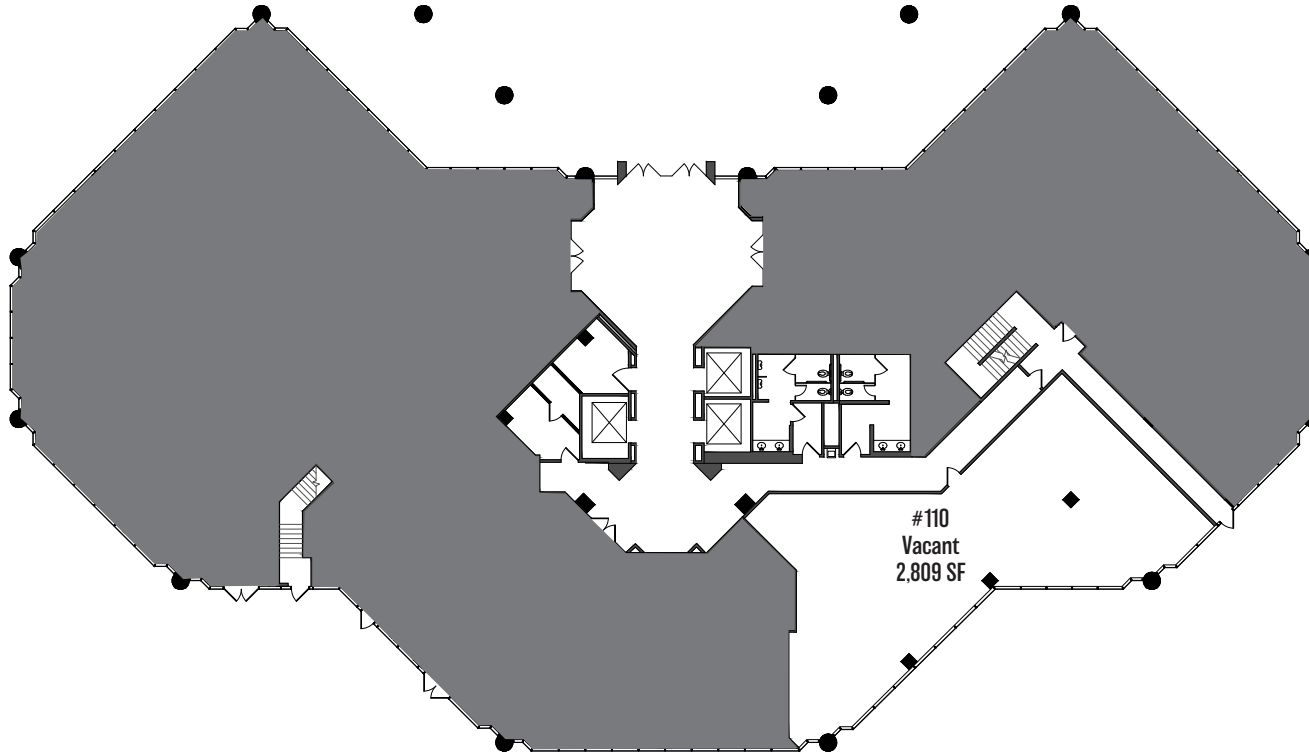
The distributor of this communication is performing acts for which a real estate license is required. The information contained herein has been obtained from sources deemed reliable but has not been verified and no guarantee, warranty or representation, either express or implied, is made with respect to such information. Terms of sale or lease and availability are subject to change or withdrawal without notice. Corporate License #01355491



# CANVAS

3080 BRISTOL STREET | COSTA MESA | CA | 92626

3080 1st Floor



Building Location



CANVASCOSTAMESA.COM

LEASING

NEWMARK

**Jay Nugent**

CA RE Lic. #01248267

t 949-608-2035

jay.nugent@nmrk.com

**Drew Netherton**

CA RE Lic. #01307669

t 949-608-2084

drew.netherton@nmrk.com

**Andrew Robben**

CA RE Lic. #01372891

t 949-608-2073

andrew.robben@nmrk.com

**Richard Sung**

CA RE Lic. #01953211

t 949-608-2178

richard.sung@nmrk.com

OWNERSHIP



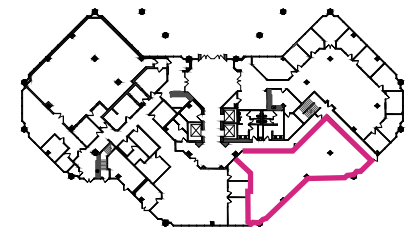
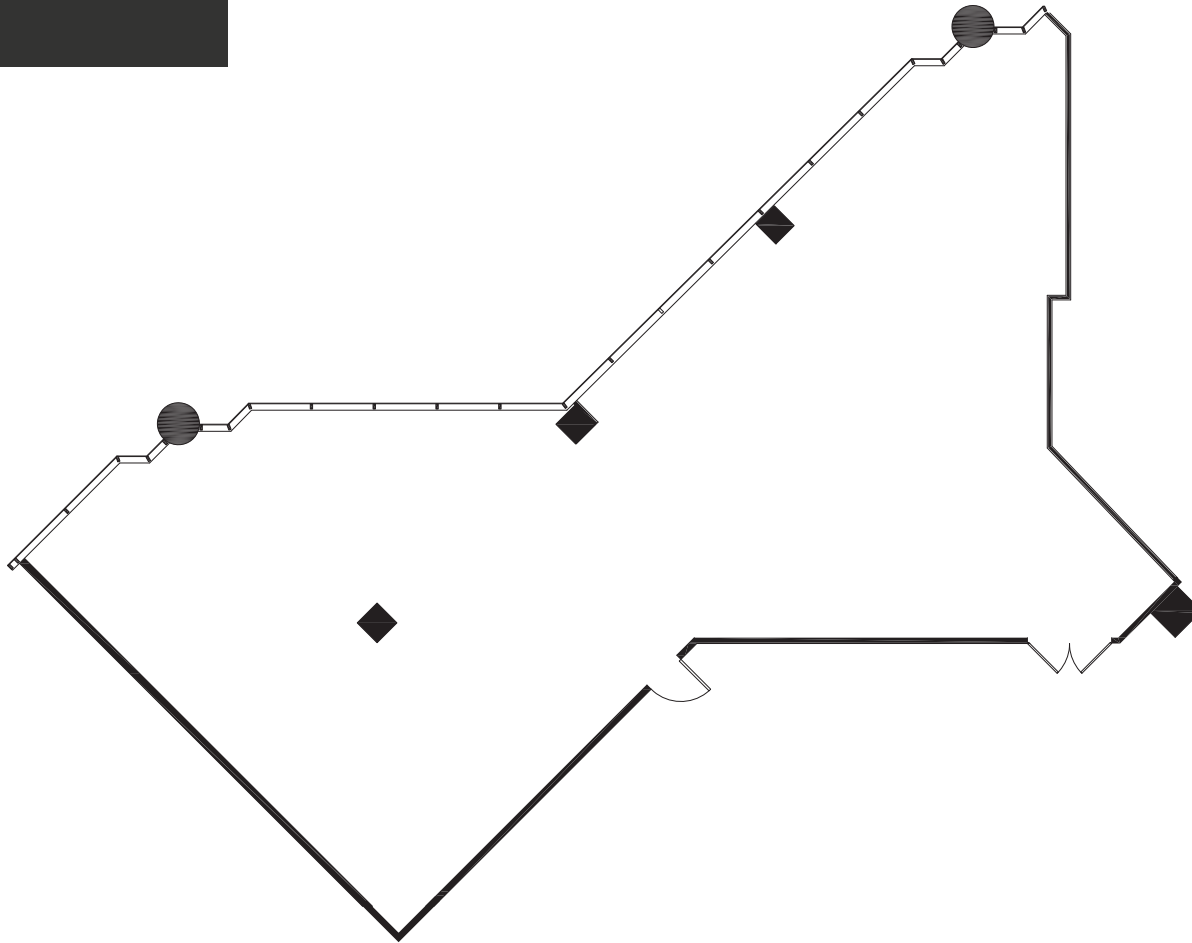
EQ Office

The distributor of this communication is performing acts for which a real estate license is required. The information contained herein has been obtained from sources deemed reliable but has not been verified and no guarantee, warranty or representation, either express or implied, is made with respect to such information. Terms of sale or lease and availability are subject to change or withdrawal without notice. Corporate License #01355491

# CANVAS

3080 BRISTOL STREET | COSTA MESA | CA | 92626

STE 110 - 2,809 SF



CANVASCOSTAMESA.COM

LEASING

NEWMARK

**Jay Nugent**

CA RE Lic. #01248267  
t 949-608-2035  
jay.nugent@nrmk.com

**Drew Netherton**

CA RE Lic. #01307669  
t 949-608-2084  
drew.netherton@nrmk.com

**Andrew Robben**

CA RE Lic. #01372891  
t 949-608-2073  
andrew.robben@nrmk.com

**Richard Sung**

CA RE Lic. #01953211  
t 949-608-2178  
richard.sung@nrmk.com

OWNERSHIP



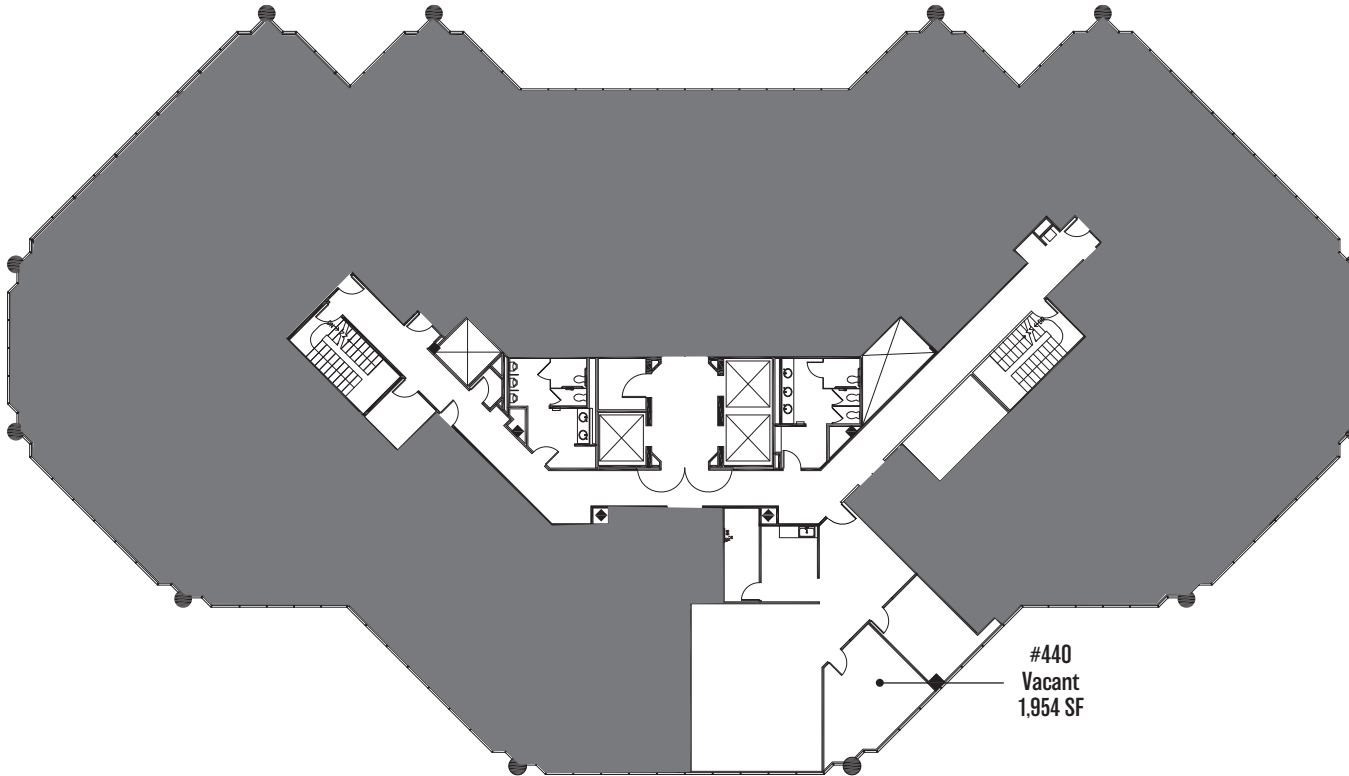
EQ Office

The distributor of this communication is performing acts for which a real estate license is required. The information contained herein has been obtained from sources deemed reliable but has not been verified and no guarantee, warranty or representation, either express or implied, is made with respect to such information. Terms of sale or lease and availability are subject to change or withdrawal without notice. Corporate License #01355491

# CANVAS

3080 BRISTOL STREET | COSTA MESA | CA | 92626

3080 4th Floor



Building Location



CANVASCOSTAMESA.COM

LEASING

NEWMARK

**Jay Nugent**

CA RE Lic. #01248267

t 949-608-2035

jay.nugent@nmrk.com

**Drew Netherton**

CA RE Lic. #01307669

t 949-608-2084

drew.netherton@nmrk.com

**Andrew Robben**

CA RE Lic. #01372891

t 949-608-2073

andrew.robber@nmrk.com

**Richard Sung**

CA RE Lic. #01953211

t 949-608-2178

richard.sung@nmrk.com

OWNERSHIP



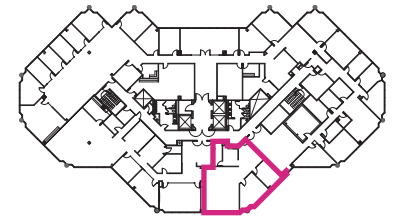
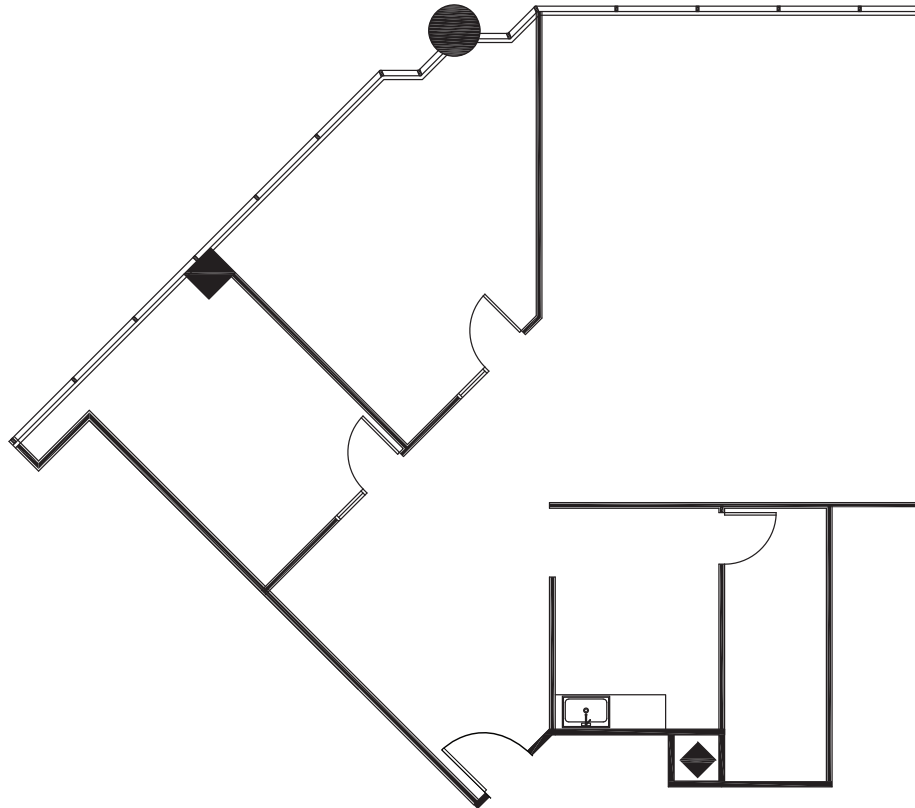
EQ Office

The distributor of this communication is performing acts for which a real estate license is required. The information contained herein has been obtained from sources deemed reliable but has not been verified and no guarantee, warranty or representation, either express or implied, is made with respect to such information. Terms of sale or lease and availability are subject to change or withdrawal without notice. Corporate License #01355491

# CANVAS

3080 BRISTOL STREET | COSTA MESA | CA | 92626

STE 440 - 1,954 SF



CANVASCOSTAMESA.COM

## Jay Nugent

CA RE Lic. #01248267  
t 949-608-2035  
jay.nugent@nmrk.com

## Drew Netherton

CA RE Lic. #01307669  
t 949-608-2084  
drew.netherton@nmrk.com

## Andrew Robben

CA RE Lic. #01372891  
t 949-608-2073  
andrew.robbe@nmrk.com

## Richard Sung

CA RE Lic. #01953211  
t 949-608-2178  
richard.sung@nmrk.com

OWNERSHIP



EQ Office

LEASING

NEWMARK

The distributor of this communication is performing acts for which a real estate license is required. The information contained herein has been obtained from sources deemed reliable but has not been verified and no guarantee, warranty or representation, either express or implied, is made with respect to such information. Terms of sale or lease and availability are subject to change or withdrawal without notice. Corporate License #01355491

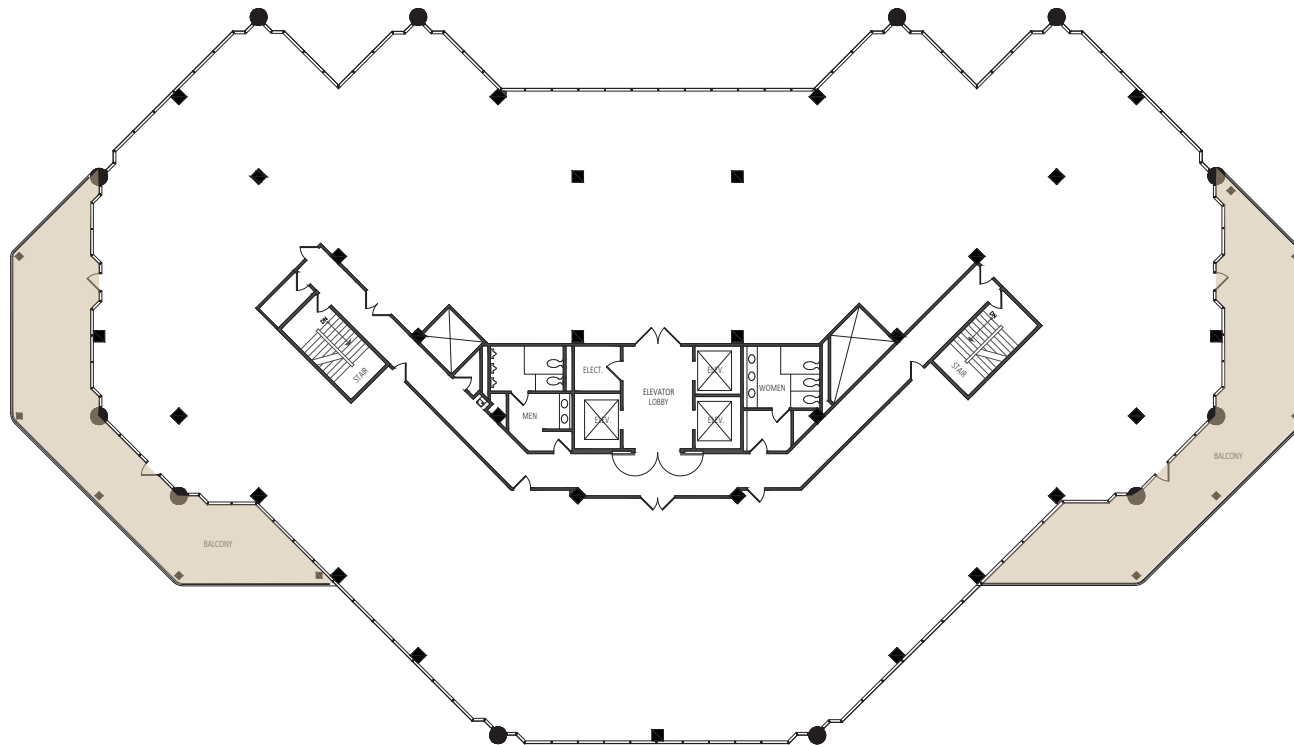
# CANVAS

3080 BRISTOL STREET | COSTA MESA | CA | 92626

**3080 5th Floor**

**STE 500 - 22,221 SF**

CLICK  TO VIEW VIRTUAL TOUR



Building Location



**CANVASCOSTAMESA.COM**

**LEASING**

**NEWMARK**

**Jay Nugent**

CA RE Lic. #01248267

t 949-608-2035

jay.nugent@nmrk.com

**Drew Netherton**

CA RE Lic. #01307669

t 949-608-2084

drew.netherton@nmrk.com

**Andrew Robben**

CA RE Lic. #01372891

t 949-608-2073

andrew.robben@nmrk.com

**Richard Sung**

CA RE Lic. #01953211

t 949-608-2178

richard.sung@nmrk.com

**OWNERSHIP**



**EQ Office**

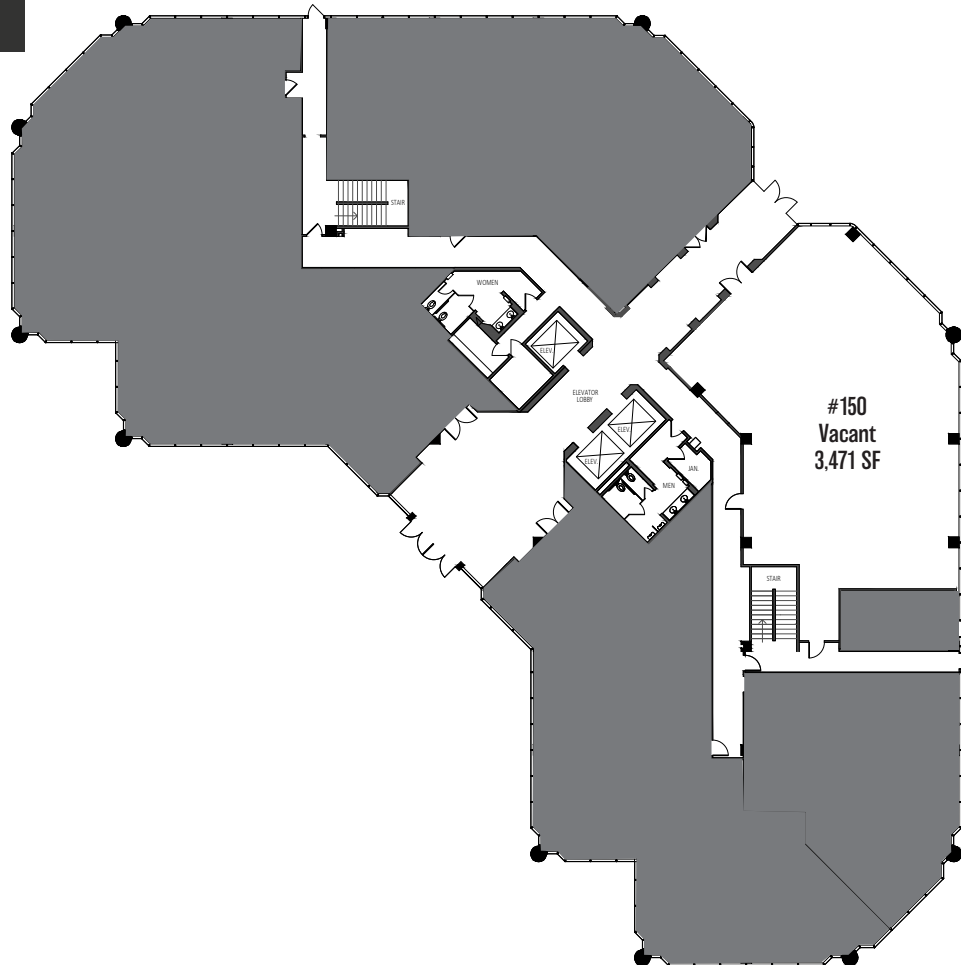
The distributor of this communication is performing acts for which a real estate license is required. The information contained herein has been obtained from sources deemed reliable but has not been verified and no guarantee, warranty or representation, either express or implied, is made with respect to such information. Terms of sale or lease and availability are subject to change or withdrawal without notice. Corporate License #01355491



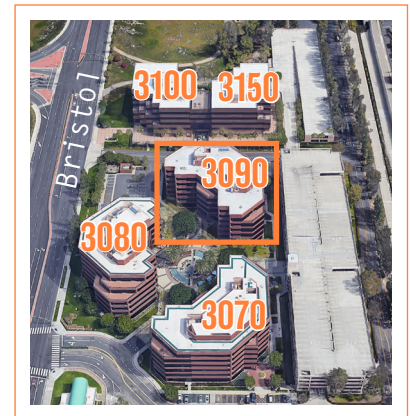
# CANVAS

3090 BRISTOL STREET | COSTA MESA | CA | 92626

3090 1st Floor



Building Location



CANVASCOSTAMESA.COM

LEASING

NEWMARK

**Jay Nugent**  
CA RE Lic. #01248267  
t 949-608-2035  
jay.nugent@nmrk.com

**Drew Netherton**  
CA RE Lic. #01307669  
t 949-608-2084  
drew.netherton@nmrk.com

**Andrew Robben**  
CA RE Lic. #01372891  
t 949-608-2073  
andrew.robben@nmrk.com

**Richard Sung**  
CA RE Lic. #01953211  
t 949-608-2178  
richard.sung@nmrk.com

OWNERSHIP



EQ Office

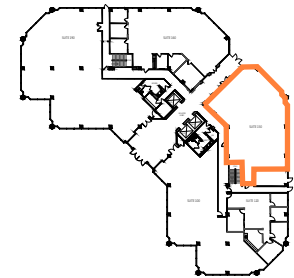
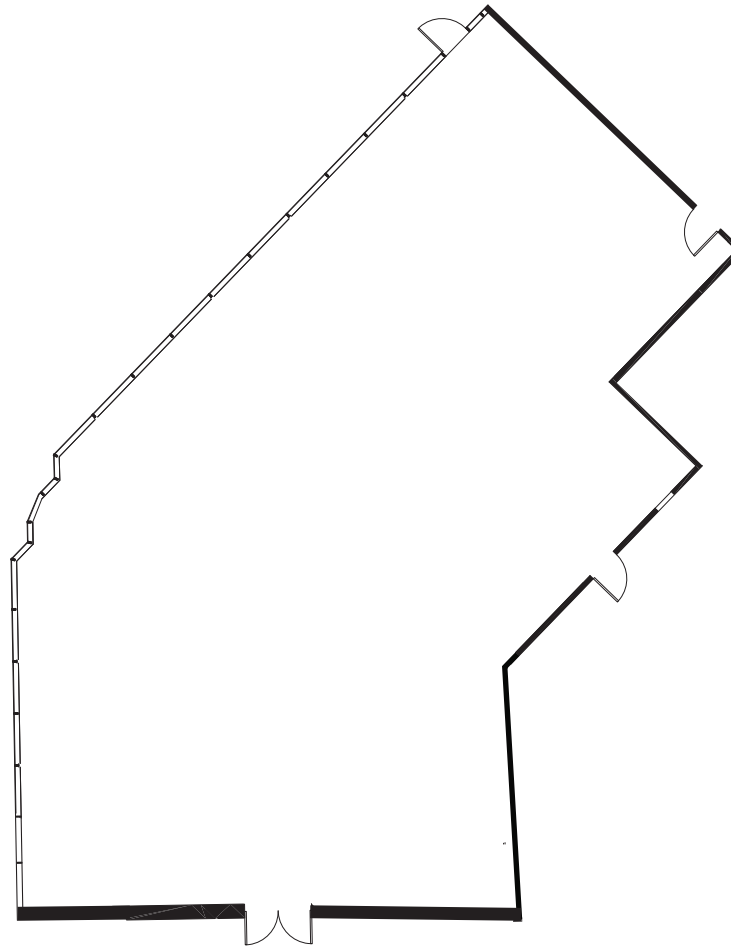
The distributor of this communication is performing acts for which a real estate license is required. The information contained herein has been obtained from sources deemed reliable but has not been verified and no guarantee, warranty or representation, either express or implied, is made with respect to such information. Terms of sale or lease and availability are subject to change or withdrawal without notice.  
Corporate License #01355491



# CANVAS

3090 BRISTOL STREET | COSTA MESA | CA | 92626

STE 150 - 3,471 SF



CANVASCOSTAMESA.COM

LEASING

NEWMARK

**Jay Nugent**

CA RE Lic. #01248267  
t 949-608-2035  
jay.nugent@nmrk.com

**Drew Netherton**

CA RE Lic. #01307669  
t 949-608-2084  
drew.netherton@nmrk.com

**Andrew Robben**

CA RE Lic. #01372891  
t 949-608-2073  
andrew.robben@nmrk.com

**Richard Sung**

CA RE Lic. #01953211  
t 949-608-2178  
richard.sung@nmrk.com

OWNERSHIP



EQ Office

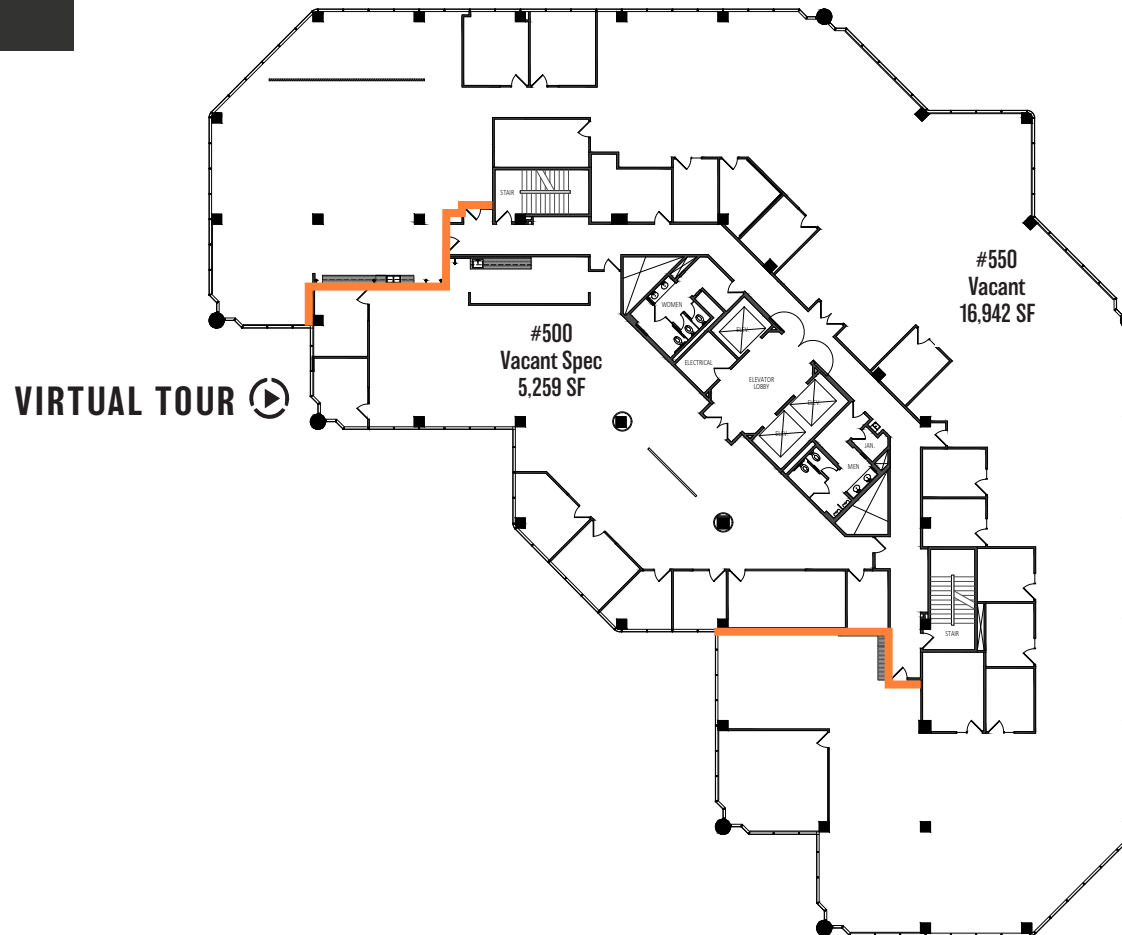
The distributor of this communication is performing acts for which a real estate license is required. The information contained herein has been obtained from sources deemed reliable but has not been verified and no guarantee, warranty or representation, either express or implied, is made with respect to such information. Terms of sale or lease and availability are subject to change or withdrawal without notice. Corporate License #01355491

# CANVAS

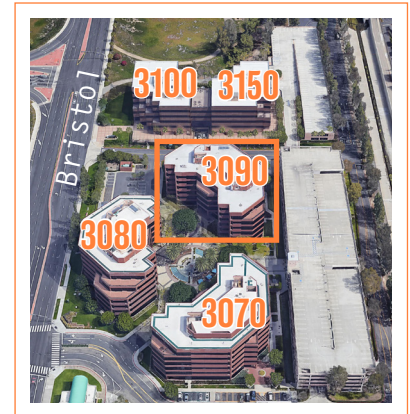
## 3090 BRISTOL STREET | COSTA MESA | CA | 92626

### 3090 5th Floor

### 5,259 - 22,201 SF



Building Location



**CANVASCOSTAMESA.COM**

**Jay Nugent**

CA RE Lic. #01248267

t 949-608-2035

jay.nugent@nrmk.com

**Drew Netherton**

CA RE Lic. #01307669

t 949-608-2084

drew.netherton@nrmk.com

**Andrew Robben**

CA RE Lic. #01372891

t 949-608-2073

andrew.robben@nrmk.com

**Richard Sung**

CA RE Lic. #01953211

t 949-608-2178

richard.sung@nrmk.com

**OWNERSHIP**



**EQ Office**

**LEASING**

**NEWMARK**

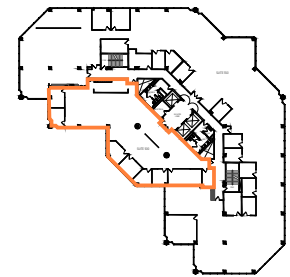
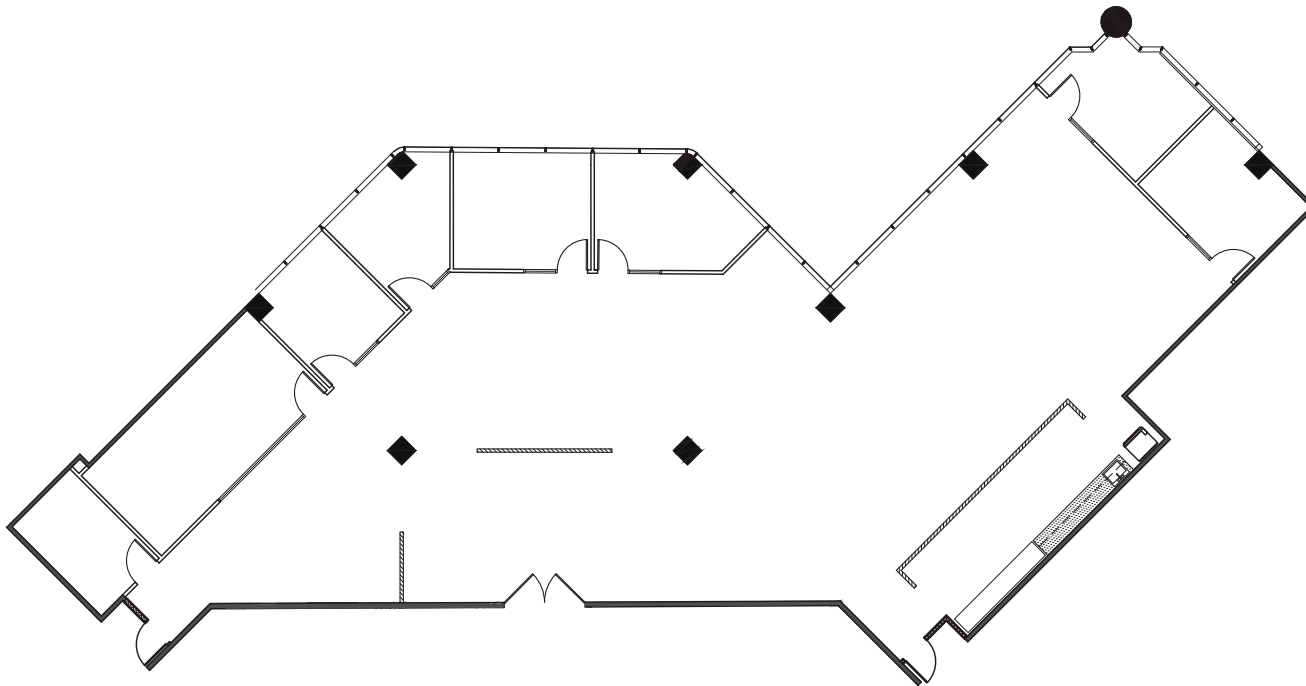
The distributor of this communication is performing acts for which a real estate license is required. The information contained herein has been obtained from sources deemed reliable but has not been verified and no guarantee, warranty or representation, either express or implied, is made with respect to such information. Terms of sale or lease and availability are subject to change or withdrawal without notice. Corporate License #01355491

# CANVAS

3090 BRISTOL STREET | COSTA MESA | CA | 92626

**SPEC SUITE - STE 500 - 5,259 SF**

CLICK ► TO VIEW VIRTUAL TOUR



**CANVASCOSTAMESA.COM**

**LEASING**

**NEWMARK**

**Jay Nugent**

CA RE Lic. #01248267

t 949-608-2035

jay.nugent@nmrk.com

**Drew Netherton**

CA RE Lic. #01307669

t 949-608-2084

drew.netherton@nmrk.com

**Andrew Robben**

CA RE Lic. #01372891

t 949-608-2073

andrew.robben@nmrk.com

**Richard Sung**

CA RE Lic. #01953211

t 949-608-2178

richard.sung@nmrk.com

**OWNERSHIP**



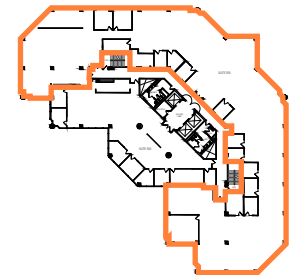
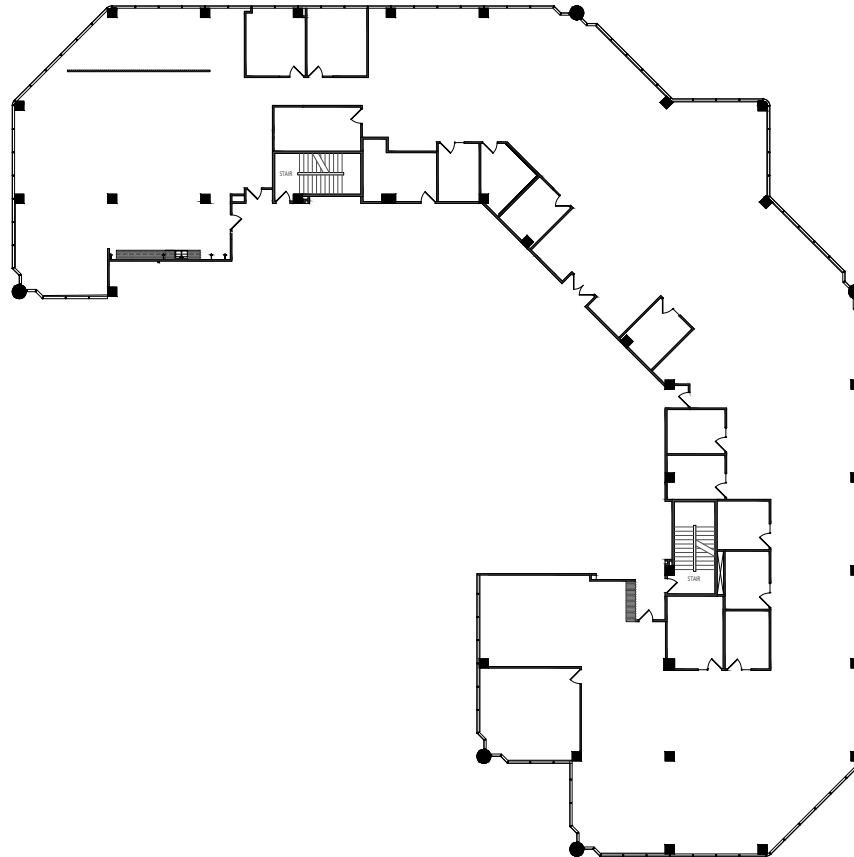
**EQ Office**

The distributor of this communication is performing acts for which a real estate license is required. The information contained herein has been obtained from sources deemed reliable but has not been verified and no guarantee, warranty or representation, either express or implied, is made with respect to such information. Terms of sale or lease and availability are subject to change or withdrawal without notice. Corporate License #01355491

# CANVAS

3090 BRISTOL STREET | COSTA MESA | CA | 92626

STE 550 - 16,942 SF



CANVASCOSTAMESA.COM

LEASING

NEWMARK

**Jay Nugent**

CA RE Lic. #01248267  
t 949-608-2035  
jay.nugent@nmrk.com

**Drew Netherton**

CA RE Lic. #01307669  
t 949-608-2084  
drew.netherton@nmrk.com

**Andrew Robben**

CA RE Lic. #01372891  
t 949-608-2073  
andrew.robbe@nmrk.com

**Richard Sung**

CA RE Lic. #01953211  
t 949-608-2178  
richard.sung@nmrk.com

OWNERSHIP



EQ Office

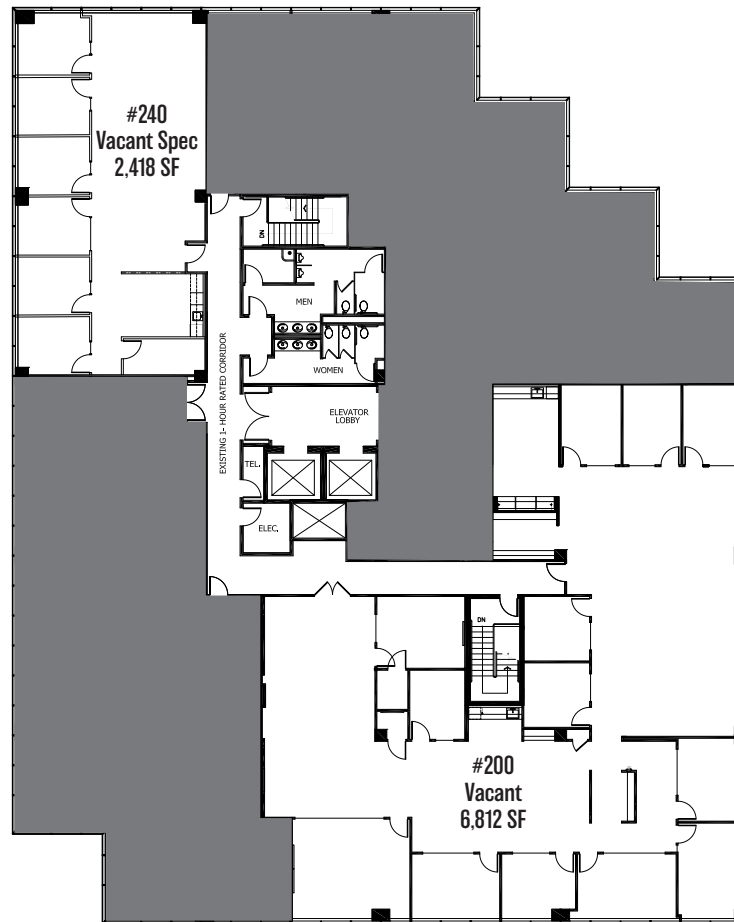
The distributor of this communication is performing acts for which a real estate license is required. The information contained herein has been obtained from sources deemed reliable but has not been verified and no guarantee, warranty or representation, either express or implied, is made with respect to such information. Terms of sale or lease and availability are subject to change or withdrawal without notice. Corporate License #01355491

# CANVAS

3100 BRISTOL STREET | COSTA MESA | CA | 92626

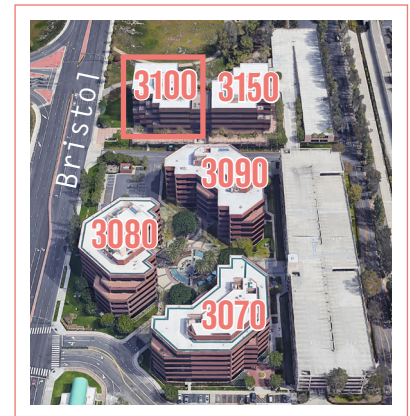
## 3100 2nd Floor

2,418 - 6,812 SF



 VIRTUAL TOUR

Building Location



[CANVASCOSTAMESA.COM](http://CANVASCOSTAMESA.COM)

**Jay Nugent**

CA RE Lic. #01248267

t 949-608-2035

[jay.nugent@nmrk.com](mailto:jay.nugent@nmrk.com)

**Drew Netherton**

CA RE Lic. #01307669

t 949-608-2084

[drew.netherton@nmrk.com](mailto:drew.netherton@nmrk.com)

**Andrew Robben**

CA RE Lic. #01372891

t 949-608-2073

[andrew.robbe@nmrk.com](mailto:andrew.robbe@nmrk.com)

**Richard Sung**

CA RE Lic. #01953211

t 949-608-2178

[richard.sung@nmrk.com](mailto:richard.sung@nmrk.com)

**OWNERSHIP**



**EQ Office**

**LEASING**

**NEWMARK**

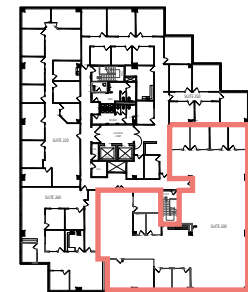
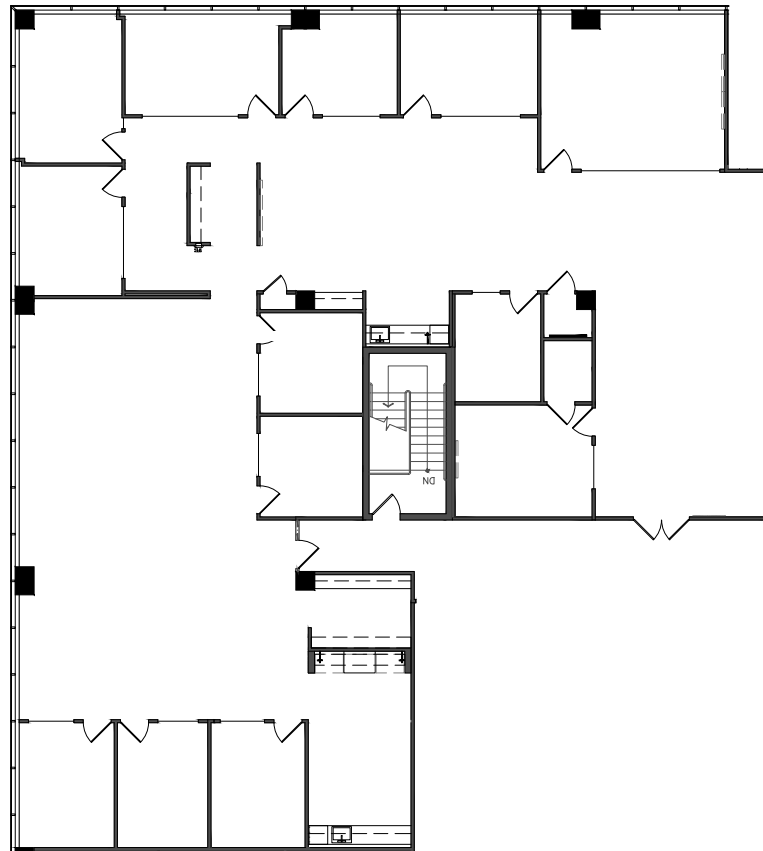
The distributor of this communication is performing acts for which a real estate license is required. The information contained herein has been obtained from sources deemed reliable but has not been verified and no guarantee, warranty or representation, either express or implied, is made with respect to such information. Terms of sale or lease and availability are subject to change or withdrawal without notice. Corporate License #01355491

# CANVAS

3100 BRISTOL STREET | COSTA MESA | CA | 92626

**SPEC SUITE - STE 200 - 6,812 SF**

CLICK  TO VIEW VIRTUAL TOUR



**CANVASCOSTAMESA.COM**

### Jay Nugent

CA RE Lic. #01248267

t 949-608-2035

jay.nugent@nmrk.com

### Drew Netherton

CA RE Lic. #01307669

t 949-608-2084

drew.netherton@nmrk.com

### Andrew Robben

CA RE Lic. #01372891

t 949-608-2073

andrew.robbe@nmrk.com

### Richard Sung

CA RE Lic. #01953211

t 949-608-2178

richard.sung@nmrk.com

**OWNERSHIP**



**EQ Office**

**LEASING**

**NEWMARK**

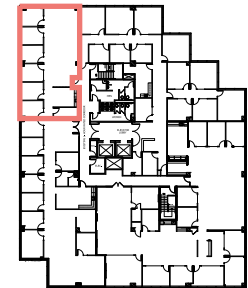
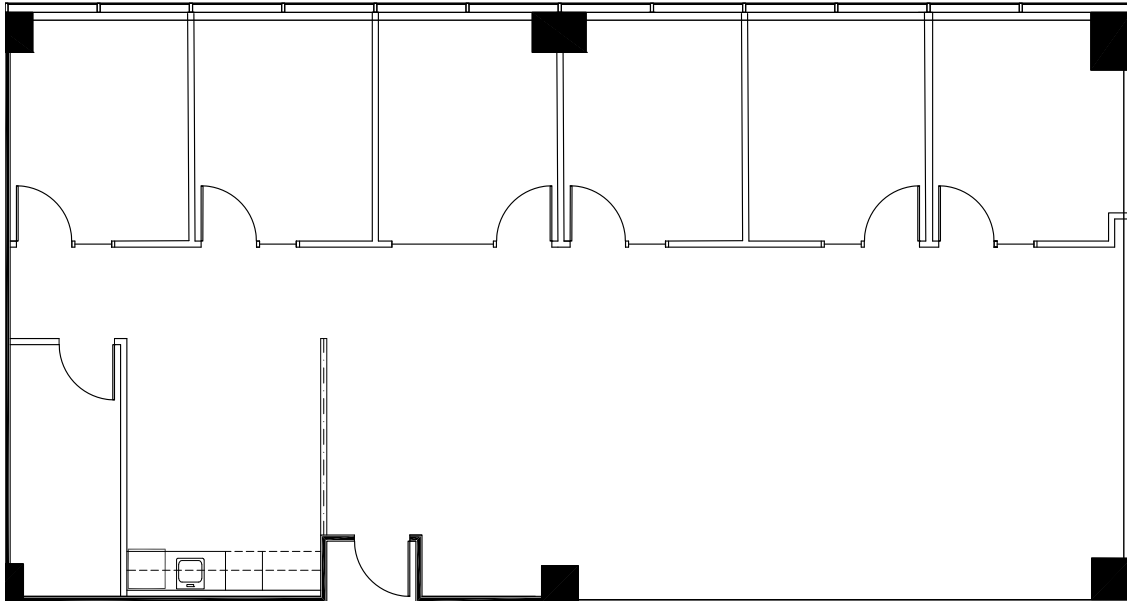
The distributor of this communication is performing acts for which a real estate license is required. The information contained herein has been obtained from sources deemed reliable but has not been verified and no guarantee, warranty or representation, either express or implied, is made with respect to such information. Terms of sale or lease and availability are subject to change or withdrawal without notice. Corporate License #01355491



# CANVAS

3100 BRISTOL STREET | COSTA MESA | CA | 92626

SPEC SUITE - STE 240 - 2,418 SF



CANVASCOSTAMESA.COM

LEASING

NEWMARK

### Jay Nugent

CA RE Lic. #01248267

t 949-608-2035

jay.nugent@nmrk.com

### Drew Netherton

CA RE Lic. #01307669

t 949-608-2084

drew.netherton@nmrk.com

### Andrew Robben

CA RE Lic. #01372891

t 949-608-2073

andrew.robbe@nmrk.com

### Richard Sung

CA RE Lic. #01953211

t 949-608-2178

richard.sung@nmrk.com

OWNERSHIP



EQ Office

The distributor of this communication is performing acts for which a real estate license is required. The information contained herein has been obtained from sources deemed reliable but has not been verified and no guarantee, warranty or representation, either express or implied, is made with respect to such information. Terms of sale or lease and availability are subject to change or withdrawal without notice. Corporate License #01355491

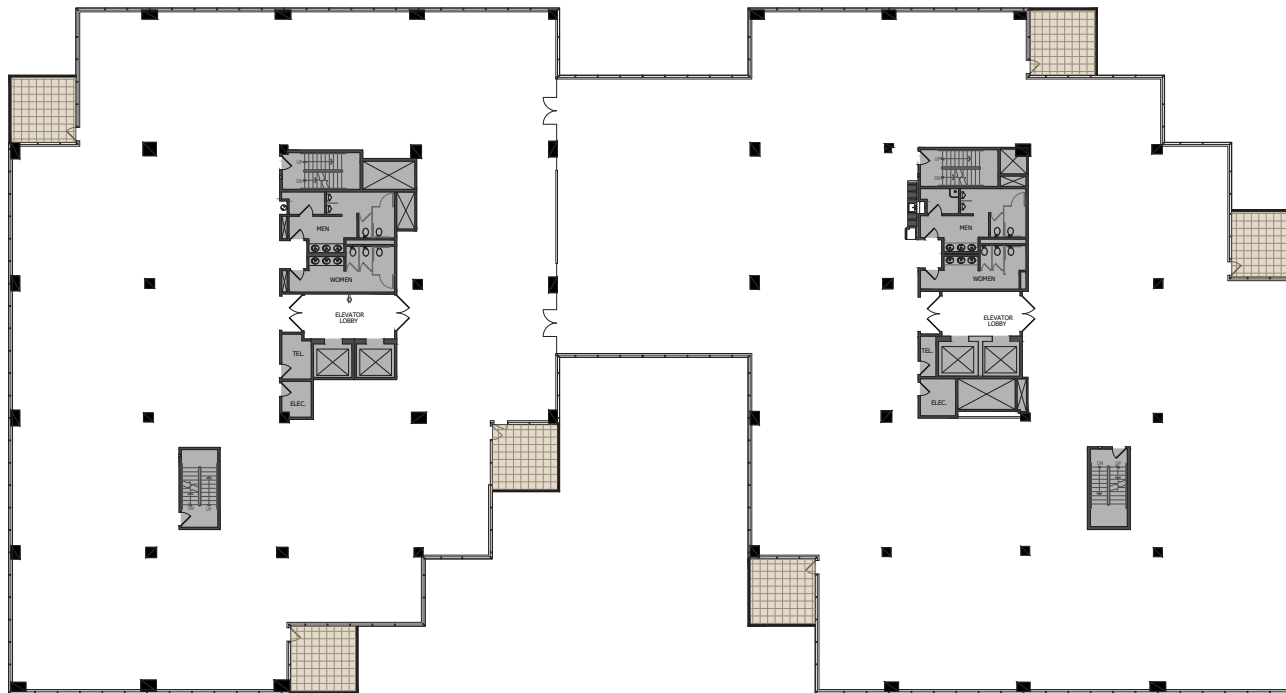
# CANVAS

3100 & 3150 BRISTOL STREET | COSTA MESA | CA | 92626

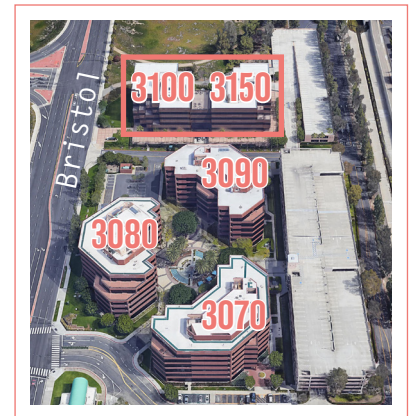
**3100 3rd Floor**

**STE 300 - 39,311 SF**

SIX BALCONIES



Building Location



**CANVASCOSTAMESA.COM**

**LEASING**

**NEWMARK**

**Jay Nugent**

CA RE Lic. #01248267

t 949-608-2035

jay.nugent@nmrk.com

**Drew Netherton**

CA RE Lic. #01307669

t 949-608-2084

drew.netherton@nmrk.com

**Andrew Robben**

CA RE Lic. #01372891

t 949-608-2073

andrew.robben@nmrk.com

**Richard Sung**

CA RE Lic. #01953211

t 949-608-2178

richard.sung@nmrk.com

**OWNERSHIP**



**EQ Office**

The distributor of this communication is performing acts for which a real estate license is required. The information contained herein has been obtained from sources deemed reliable but has not been verified and no guarantee, warranty or representation, either express or implied, is made with respect to such information. Terms of sale or lease and availability are subject to change or withdrawal without notice. Corporate License #01355491

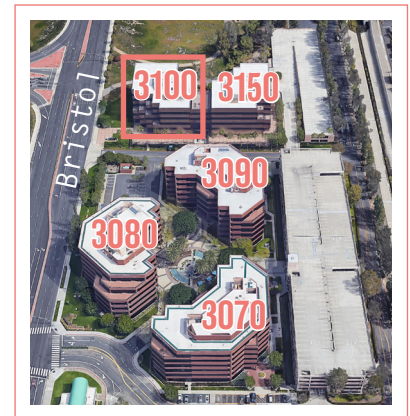
# CANVAS

3100 BRISTOL STREET | COSTA MESA | CA | 92626

3100 4th Floor

Need Full Floor Plan

Building Location



CANVASCOSTAMESA.COM

LEASING

NEWMARK

**Jay Nugent**

CA RE Lic. #01248267

t 949-608-2035

jay.nugent@nmrk.com

**Drew Netherton**

CA RE Lic. #01307669

t 949-608-2084

drew.netherton@nmrk.com

**Andrew Robben**

CA RE Lic. #01372891

t 949-608-2073

andrew.robben@nmrk.com

**Richard Sung**

CA RE Lic. #01953211

t 949-608-2178

richard.sung@nmrk.com

OWNERSHIP



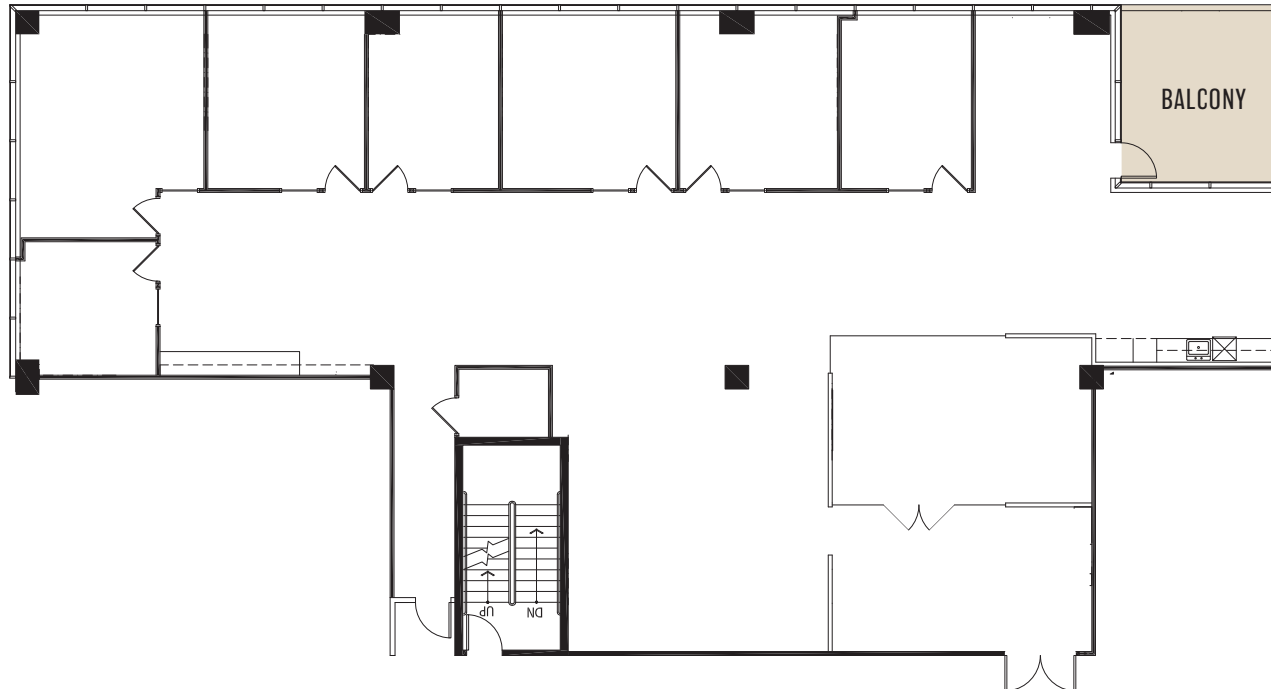
EQ Office

The distributor of this communication is performing acts for which a real estate license is required. The information contained herein has been obtained from sources deemed reliable but has not been verified and no guarantee, warranty or representation, either express or implied, is made with respect to such information. Terms of sale or lease and availability are subject to change or withdrawal without notice. Corporate License #01355491

# CANVAS

3100 BRISTOL STREET | COSTA MESA | CA | 92626

SPEC SUITE - STE 425 - 5,497 SF



CANVASCOSTAMESA.COM

LEASING

NEWMARK

**Jay Nugent**

CA RE Lic. #01248267

t 949-608-2035

jay.nugent@nmrk.com

**Drew Netherton**

CA RE Lic. #01307669

t 949-608-2084

drew.netherton@nmrk.com

**Andrew Robben**

CA RE Lic. #01372891

t 949-608-2073

andrew.robben@nmrk.com

**Richard Sung**

CA RE Lic. #01953211

t 949-608-2178

richard.sung@nmrk.com

OWNERSHIP



EQ Office

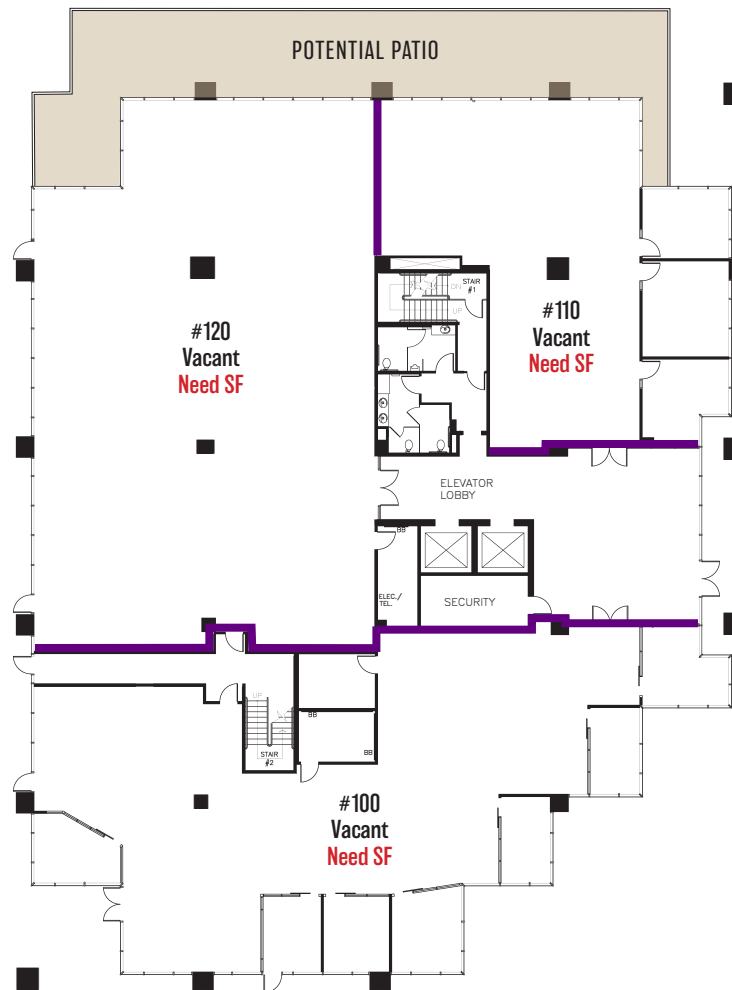
The distributor of this communication is performing acts for which a real estate license is required. The information contained herein has been obtained from sources deemed reliable but has not been verified and no guarantee, warranty or representation, either express or implied, is made with respect to such information. Terms of sale or lease and availability are subject to change or withdrawal without notice. Corporate License #01355491

# CANVAS

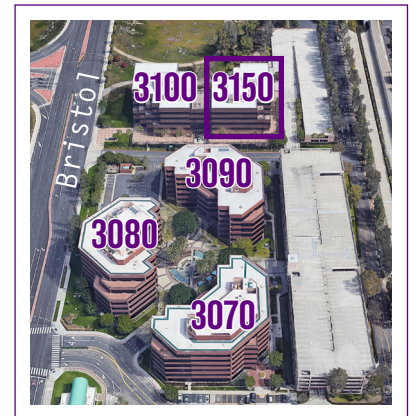
3150 BRISTOL STREET | COSTA MESA | CA | 92626

## 3150 1st Floor

0,000 - 14,313 SF



Building Location



CANVASCOSTAMESA.COM

**Jay Nugent**

CA RE Lic. #01248267

t 949-608-2035

jay.nugent@nmrk.com

**Drew Netherton**

CA RE Lic. #01307669

t 949-608-2084

drew.netherton@nmrk.com

**Andrew Robben**

CA RE Lic. #01372891

t 949-608-2073

andrew.robben@nmrk.com

**Richard Sung**

CA RE Lic. #01953211

t 949-608-2178

richard.sung@nmrk.com

OWNERSHIP



EQ Office

LEASING

NEWMARK

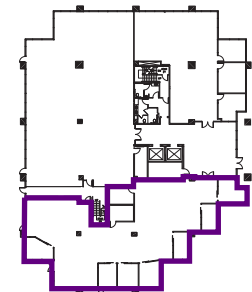
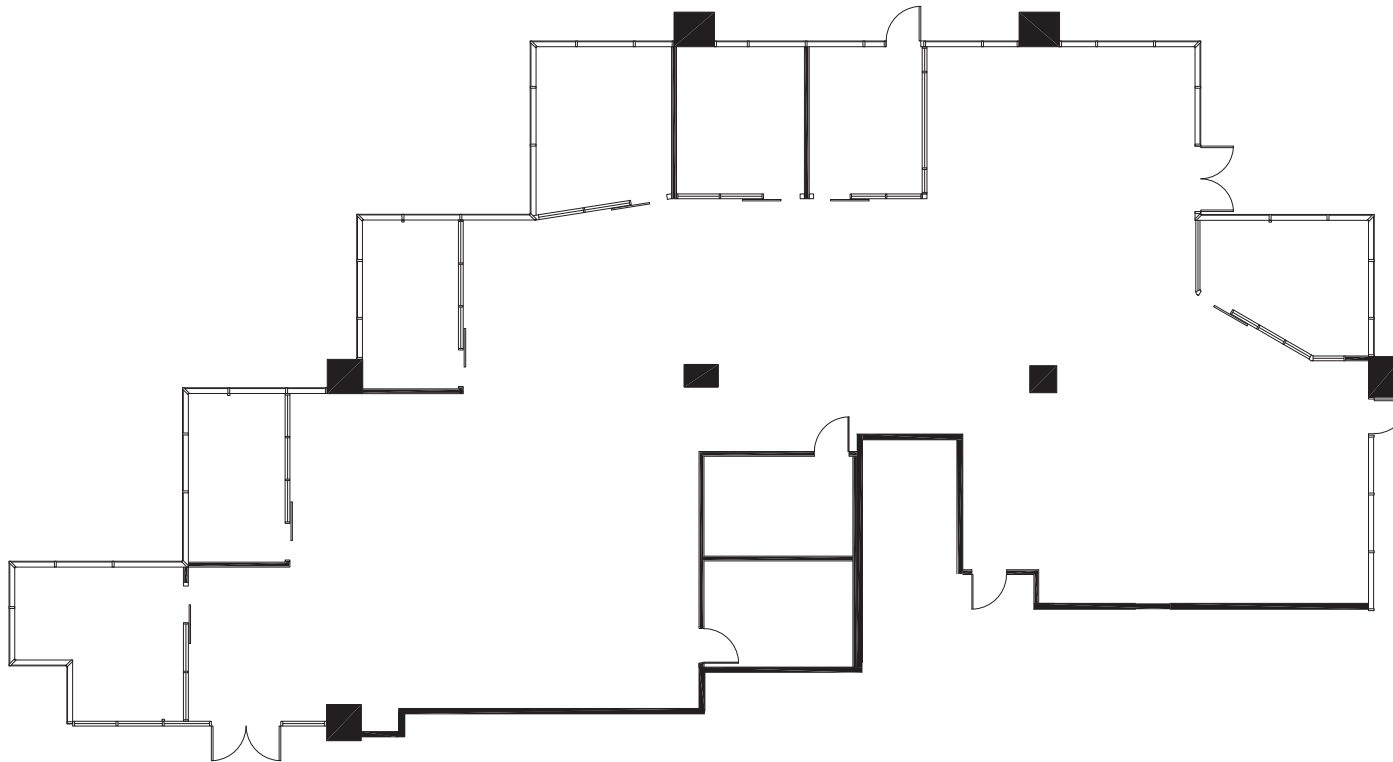
The distributor of this communication is performing acts for which a real estate license is required. The information contained herein has been obtained from sources deemed reliable but has not been verified and no guarantee, warranty or representation, either express or implied, is made with respect to such information. Terms of sale or lease and availability are subject to change or withdrawal without notice. Corporate License #01355491



# CANVAS

3150 BRISTOL STREET | COSTA MESA | CA | 92626

STE 100 - 0,000 SF



CANVASCOSTAMESA.COM

LEASING

NEWMARK

**Jay Nugent**

CA RE Lic. #01248267  
t 949-608-2035  
jay.nugent@nmrk.com

**Drew Netherton**

CA RE Lic. #01307669  
t 949-608-2084  
drew.netherton@nmrk.com

**Andrew Robben**

CA RE Lic. #01372891  
t 949-608-2073  
andrew.robben@nmrk.com

**Richard Sung**

CA RE Lic. #01953211  
t 949-608-2178  
richard.sung@nmrk.com

OWNERSHIP



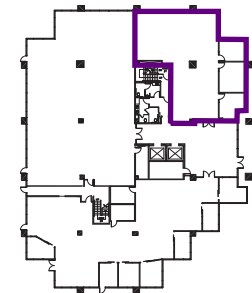
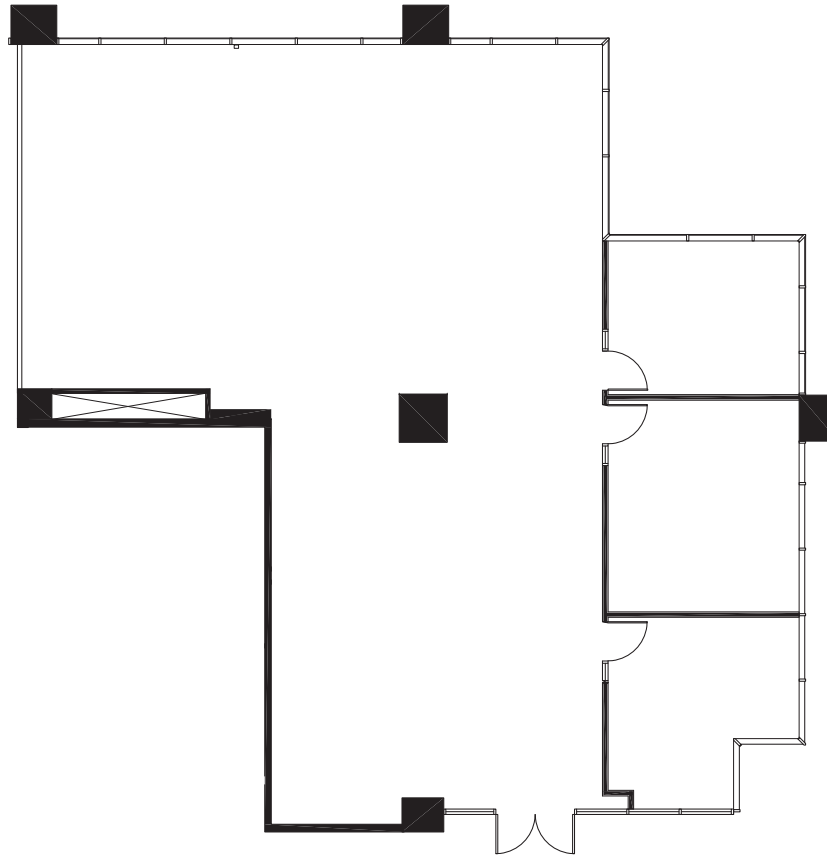
EQ Office

The distributor of this communication is performing acts for which a real estate license is required. The information contained herein has been obtained from sources deemed reliable but has not been verified and no guarantee, warranty or representation, either express or implied, is made with respect to such information. Terms of sale or lease and availability are subject to change or withdrawal without notice. Corporate License #01355491

# CANVAS

3150 BRISTOL STREET | COSTA MESA | CA | 92626

STE 110 - 0,000 SF



CANVASCOSTAMESA.COM

LEASING

NEWMARK

**Jay Nugent**

CA RE Lic. #01248267  
t 949-608-2035  
jay.nugent@nmrk.com

**Drew Netherton**

CA RE Lic. #01307669  
t 949-608-2084  
drew.netherton@nmrk.com

**Andrew Robben**

CA RE Lic. #01372891  
t 949-608-2073  
andrew.robben@nmrk.com

**Richard Sung**

CA RE Lic. #01953211  
t 949-608-2178  
richard.sung@nmrk.com

OWNERSHIP



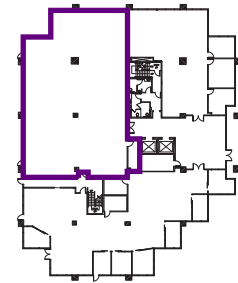
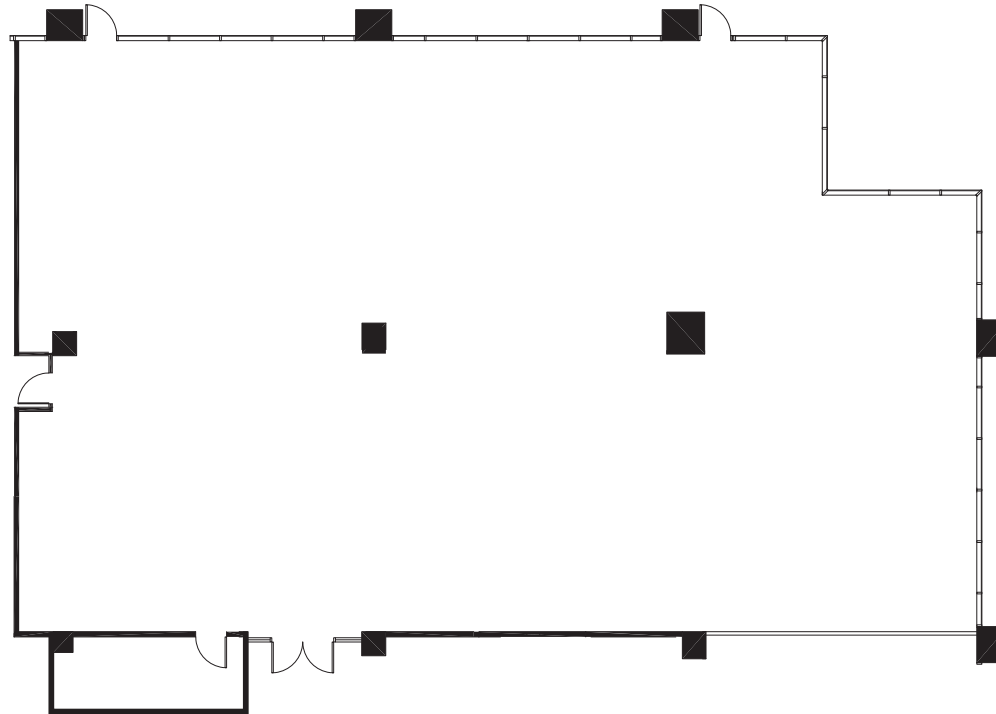
EQ Office

The distributor of this communication is performing acts for which a real estate license is required. The information contained herein has been obtained from sources deemed reliable but has not been verified and no guarantee, warranty or representation, either express or implied, is made with respect to such information. Terms of sale or lease and availability are subject to change or withdrawal without notice. Corporate License #01355491

# CANVAS

3150 BRISTOL STREET | COSTA MESA | CA | 92626

STE 120 - 0,000 SF



CANVASCOSTAMESA.COM

LEASING

NEWMARK

### Jay Nugent

CA RE Lic. #01248267  
t 949-608-2035  
jay.nugent@nmrk.com

### Drew Netherton

CA RE Lic. #01307669  
t 949-608-2084  
drew.netherton@nmrk.com

### Andrew Robben

CA RE Lic. #01372891  
t 949-608-2073  
andrew.robben@nmrk.com

### Richard Sung

CA RE Lic. #01953211  
t 949-608-2178  
richard.sung@nmrk.com

OWNERSHIP



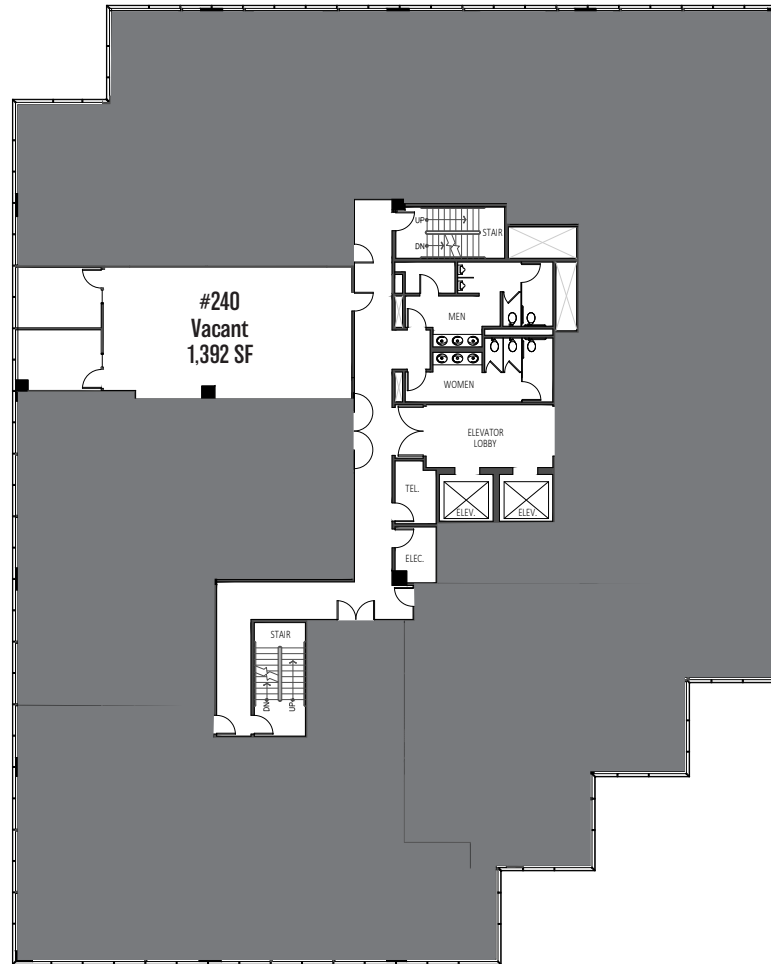
EQ Office

The distributor of this communication is performing acts for which a real estate license is required. The information contained herein has been obtained from sources deemed reliable but has not been verified and no guarantee, warranty or representation, either express or implied, is made with respect to such information. Terms of sale or lease and availability are subject to change or withdrawal without notice. Corporate License #01355491

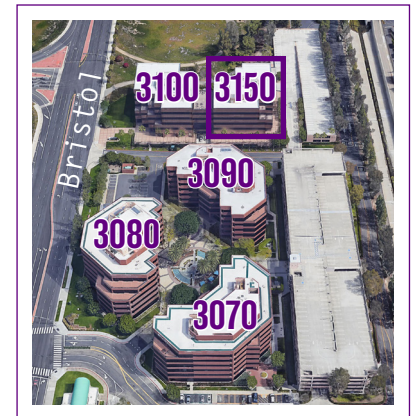
# CANVAS

3150 BRISTOL STREET | COSTA MESA | CA | 92626

## 3150 2nd Floor



Building Location



[CANVASCOSTAMESA.COM](http://CANVASCOSTAMESA.COM)

**Jay Nugent**

CA RE Lic. #01248267

t 949-608-2035

[jay.nugent@nmrk.com](mailto:jay.nugent@nmrk.com)

**Drew Netherton**

CA RE Lic. #01307669

t 949-608-2084

[drew.netherton@nmrk.com](mailto:drew.netherton@nmrk.com)

**Andrew Robben**

CA RE Lic. #01372891

t 949-608-2073

[andrew.robber@nmrk.com](mailto:andrew.robber@nmrk.com)

**Richard Sung**

CA RE Lic. #01953211

t 949-608-2178

[richard.sung@nmrk.com](mailto:richard.sung@nmrk.com)

**OWNERSHIP**



**EQ Office**

**LEASING**

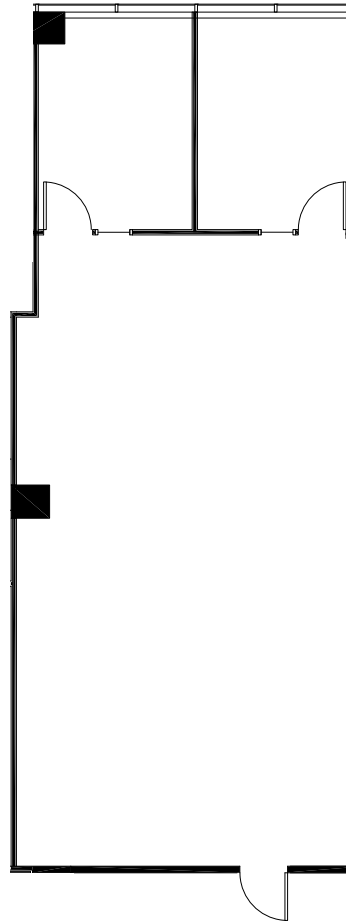
**NEWMARK**

The distributor of this communication is performing acts for which a real estate license is required. The information contained herein has been obtained from sources deemed reliable but has not been verified and no guarantee, warranty or representation, either express or implied, is made with respect to such information. Terms of sale or lease and availability are subject to change or withdrawal without notice. Corporate License #01355491

# CANVAS

3150 BRISTOL STREET | COSTA MESA | CA | 92626

**SPEC SUITE - STE 240 - 1,392 SF**



**CANVASCOSTAMESA.COM**

## Jay Nugent

CA RE Lic. #01248267

t 949-608-2035

jay.nugent@nmrk.com

## Drew Netherton

CA RE Lic. #01307669

t 949-608-2084

drew.netherton@nmrk.com

## Andrew Robben

CA RE Lic. #01372891

t 949-608-2073

andrew.robben@nmrk.com

## Richard Sung

CA RE Lic. #01953211

t 949-608-2178

richard.sung@nmrk.com

**OWNERSHIP**



**EQ Office**

**LEASING**

**NEWMARK**

The distributor of this communication is performing acts for which a real estate license is required. The information contained herein has been obtained from sources deemed reliable but has not been verified and no guarantee, warranty or representation, either express or implied, is made with respect to such information. Terms of sale or lease and availability are subject to change or withdrawal without notice. Corporate License #01355491