

Working With Charts

Three common questions about charts:

- [Is it possible to have a chart that automatically resizes as the date requires or grows?](#)
- [I only seem to get some of my chart labels displayed. How do I get every label displayed on the category axis?](#)
- [How do you rotate the labels on the category axis?](#)

Sample dataset

The dataset for the following chart examples is based on the AdventureWorksDW2014 database and is as follows:

SELECT

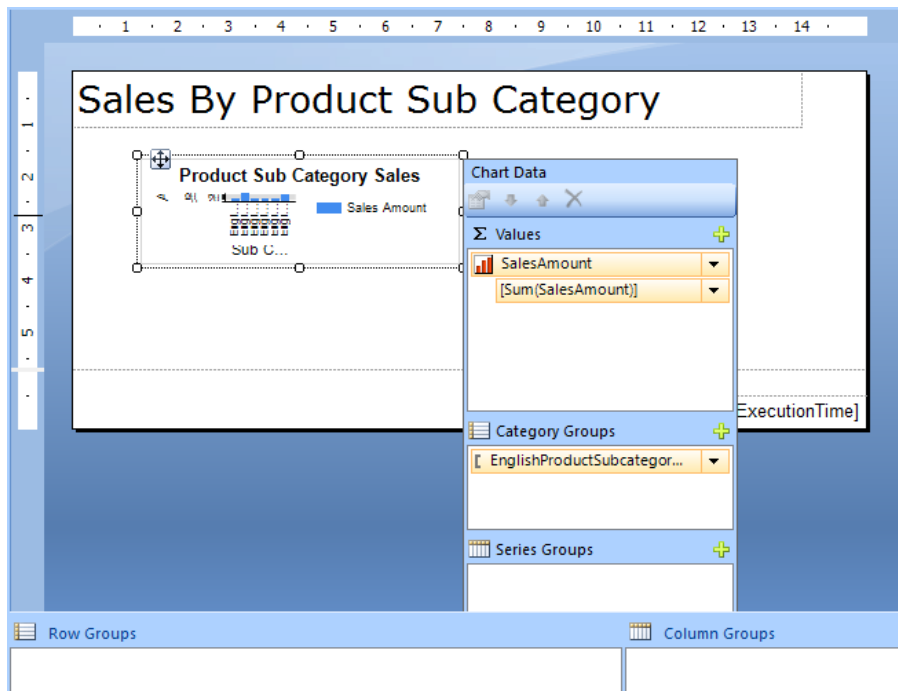
```
DimDate.CalendarYear
,DimDate.EnglishMonthName
,DimProductCategory.EnglishProductCategoryName
,DimProductSubcategory.EnglishProductSubcategoryName
,DimProduct.EnglishProductName
,FactInternetSales.SalesAmount
,FactInternetSales.OrderQuantity
```

FROM

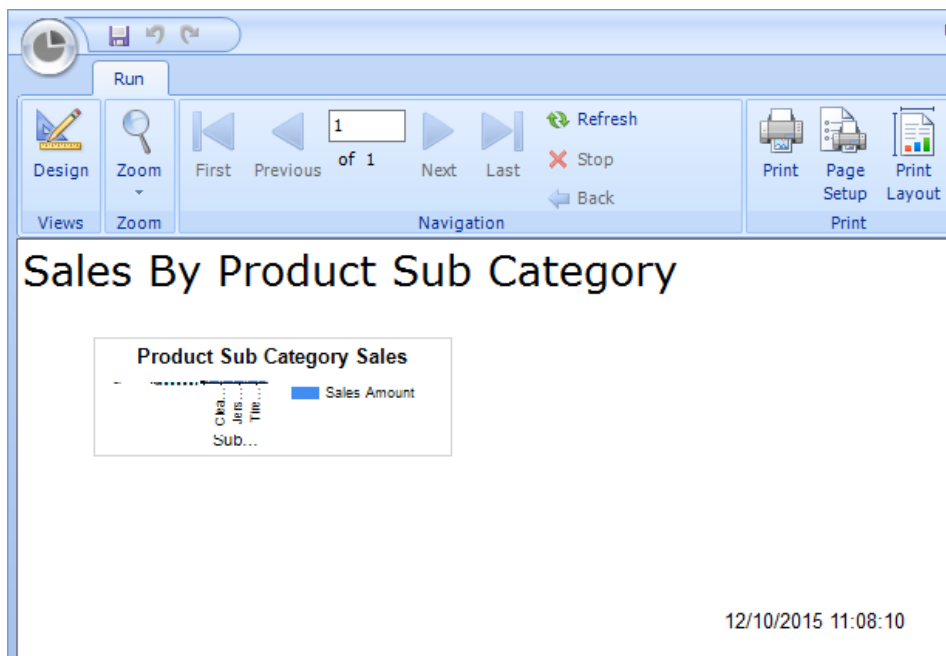
```
DimProductSubcategory
INNER JOIN DimProductCategory
    ON DimProductSubcategory.ProductCategoryKey =
DimProductCategory.ProductCategoryKey
INNER JOIN DimProduct
    ON DimProductSubcategory.ProductSubcategoryKey = DimProduct.ProductSubcategoryKey
INNER JOIN FactInternetSales
    ON DimProduct.ProductKey = FactInternetSales.ProductKey
INNER JOIN DimDate
    ON FactInternetSales.OrderDateKey = DimDate.DateKey
```

Automatically resize a chart

Create a chart with minimal size and with the Sum of SalesAmount as the value and the EnglishProductSubcategoryName as the category:



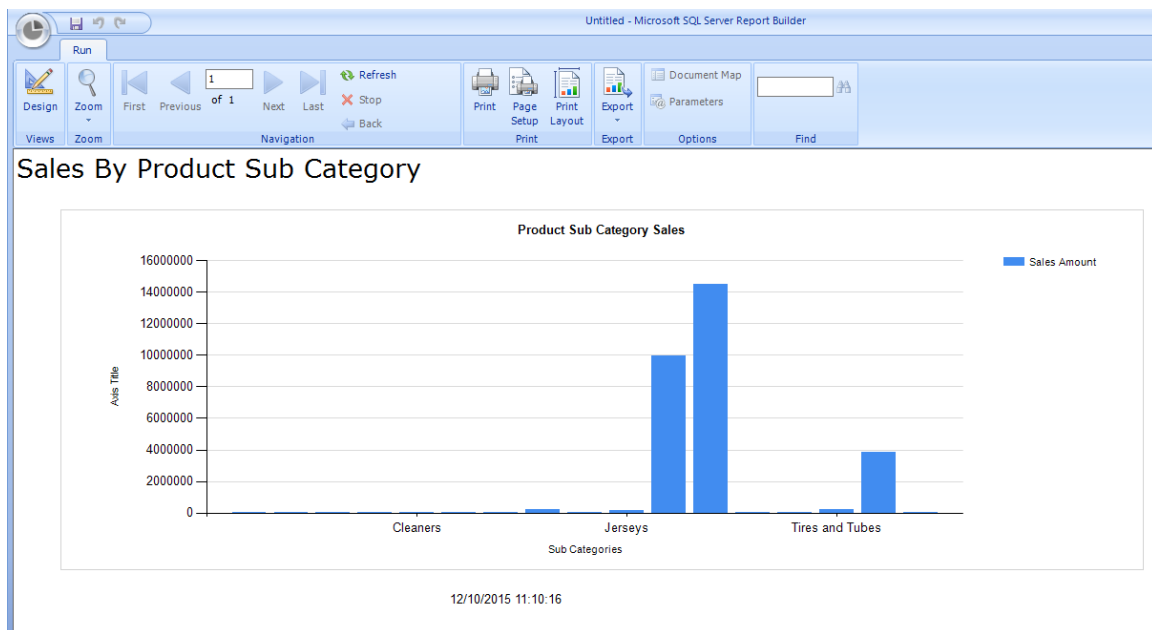
Here is the chart created with a minimal size and default properties:



Now we will change the **DynamicWidth** and **DynamicHeight** properties of the chart:

The screenshot shows the SSRS report designer interface. On the left, a chart titled "Product Sub Category Sales" is displayed in design view. The chart area contains a legend for "Sales Amount" and a partially visible x-axis label "Sub C...". On the right, the "Chart1" properties pane is open, showing various properties. The "DynamicWidth" property is highlighted in blue and set to "30cm". Other visible properties include "DynamicHeight" (10cm), "ChartAreas" (Collection), "CustomPaletteColors" (Collection), "Legends" (Collection), "NoDataMessage", "Palette" (BrightPa), "PalettePatternBehavior" (Default), "SeriesGroups" (Collection), "Titles" (Collection), "Data Only" (expanded), "DataElementName", and "DataElementOutput" (Auto).

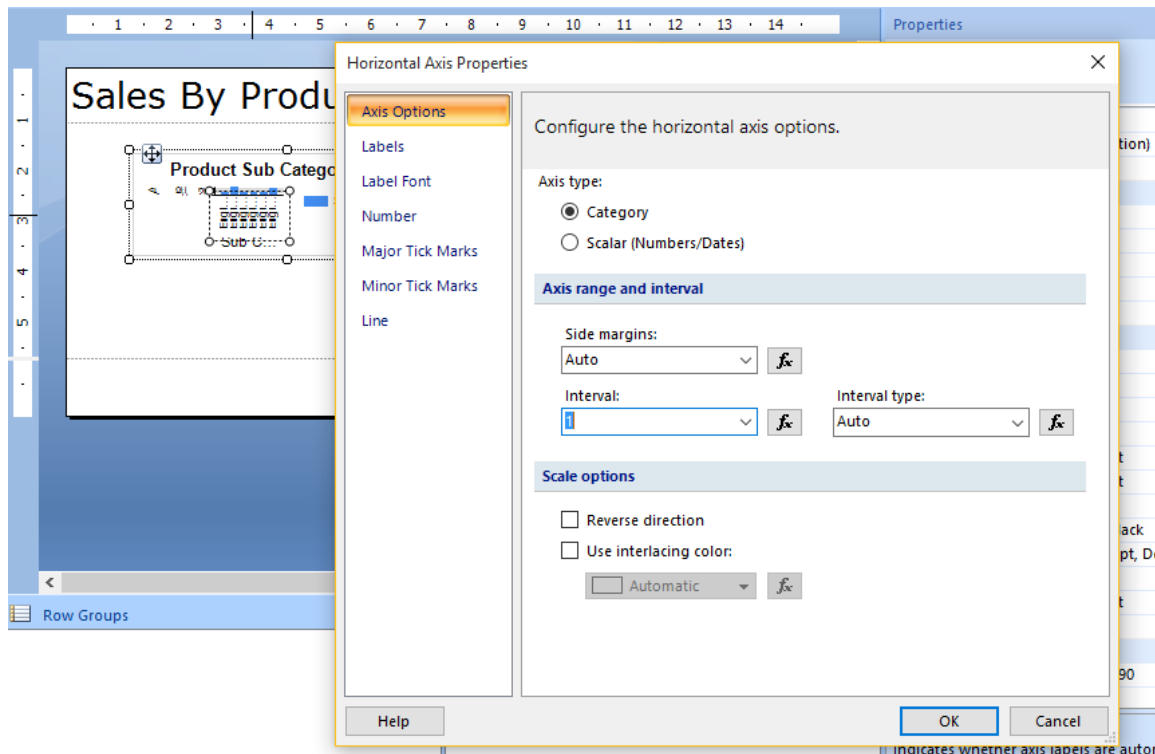
Here is the chart view now:



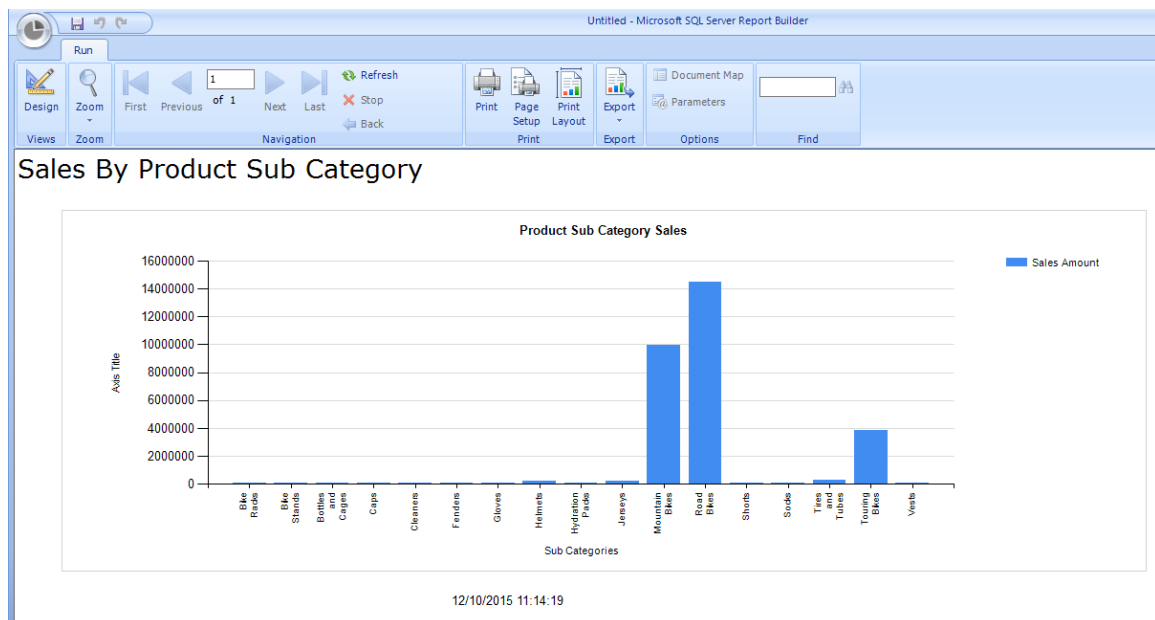
The chart has now automatically resized to cater for the number of categories across the x-axis and the value range on the y-axis, up to a maximum of 10cm high and 30cm wide.

Include Every Category Label

To ensure that every label on the horizontal (category) axis set the Interval property for the horizontal axis to a value of 1:

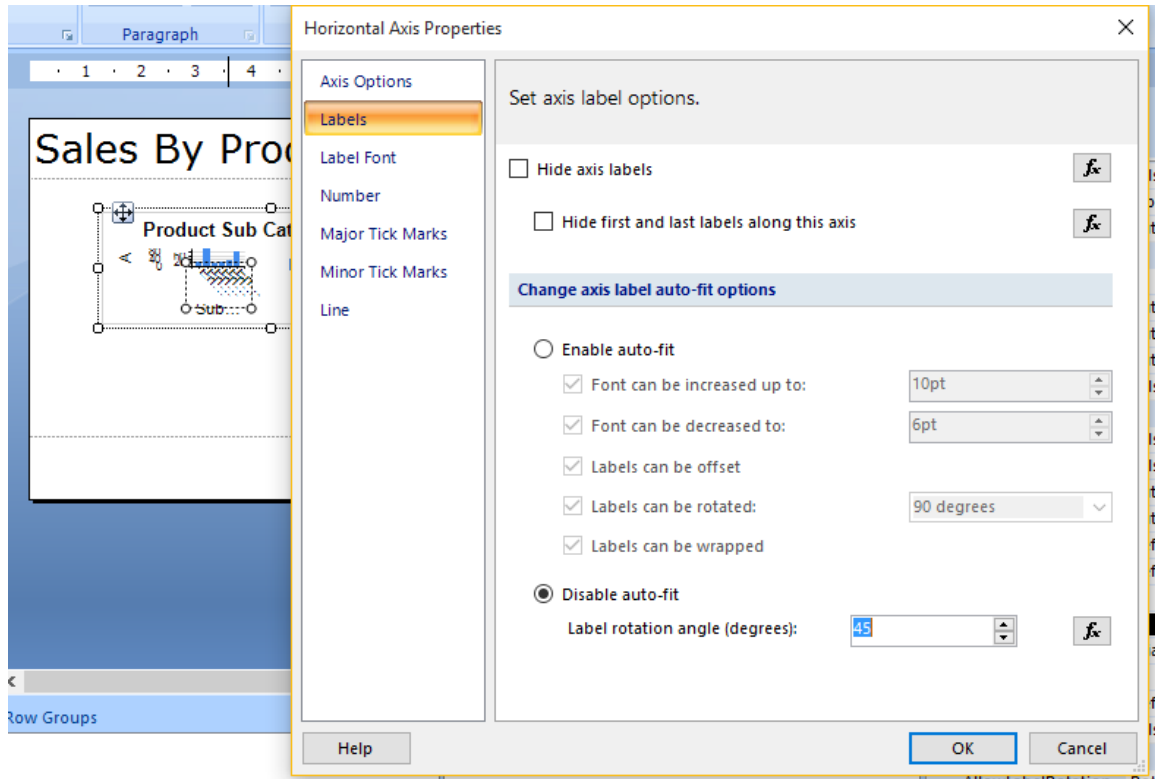


Now the chart looks like this:



Rotate the category labels

To rotate the category labels disable auto-fit for the horizontal axis and set the Label rotation angle (degrees) to a suitable size (45 degrees in this example):



The chart now looks like this:

