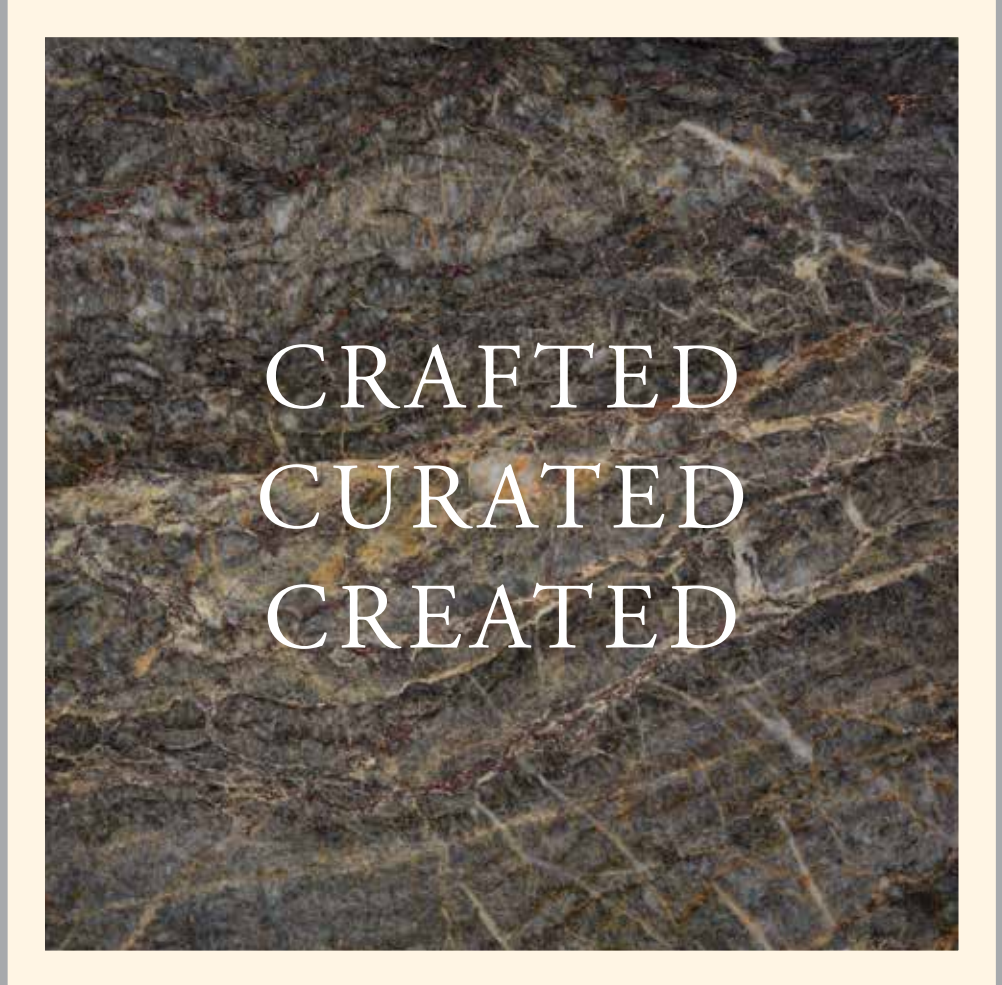


A PEERLESS
FINE FREEHOLD RESIDENCE
ALONG ORCHARD BOULEVARD





For illustration only

BOULEVARD 88

THE TANGLIN CLUB/
THE AMERICAN CLUB
(11-MIN WALK)

ION ORCHARD/
ORCHARD MRT
(7-MIN WALK)

ST. REGIS RESIDENCES/
ST. REGIS HOTEL
(4-MIN WALK)

ORCHARD
HOTEL
(8-MIN WALK)

PALAIS
RENAISSANCE
(9-MIN WALK)

SINGAPORE
MARRIOTT/
TANG PLAZA
(15-MIN WALK)

MARINA
BAY
SANDS
(15-MIN DRIVE)

RAFFLES
PLACE
FINANCIAL
DISTRICT
(13-MIN DRIVE)

GREAT
WORLD
CITY
(4-MIN DRIVE)

SENTOSA
(20-MIN DRIVE)

CAMDEN
MEDICAL CENTRE
(6-MIN WALK)



PERFECTLY
PLACED

Note: Actual travelling time is subject to traffic conditions

Artist's Impression

ALWAYS IN FINE COMPANY



Nestled in prime District 10 along Orchard Boulevard, Boulevard 88 is an exclusive address of prestige beyond compare. Considered as one of the most coveted addresses of the privileged, Boulevard 88 is within walking distance to all the sophistication and excitement of Orchard Road. Offering a lifestyle of ease that is mere minutes from the Orchard MRT and the upcoming Thomson-East Coast Line (Orchard Boulevard Station).



Premier Shopping District - Orchard Road



Singapore Botanic Gardens -
UNESCO World Heritage Site



Upscale Shopping Mall -
Palais Renaissance

Already one of the world's most famous shopping streets, there are major plans to make it even more desirable. Boulevard 88 is perfectly located to benefit from this transformation as Orchard Boulevard is at the nexus of the Tanglin and Orchard Road sub-precincts. With exciting plans to link and curate the arts, entertainment and shopping experiences like never before, Orchard Road will always be the lifestyle pulse of Singapore for years to come.



Artist's impression

ORCHARD
BOULEVARD
AN ENCLAVE
OF SERENITY



AN ART PIECE CREATED BY A MASTER

THE ART OF SAFDIE

Designed by world-renowned architect, Moshe Safdie is also an urban planner, educator, theorist, and author. Over a celebrated 50-year career, Safdie has explored the essential principles of socially responsible design with a distinct visual language.

Safdie's global practice includes projects in North and South America, the Middle East, the developing world and throughout Asia and Australia. Many projects become beloved regional and national landmarks, including Crystal Bridges Museum of American Art in Bentonville, Arkansas; Marina Bay Sands Integrated Resort and Jewel Changi Airport, Singapore.

His honours include the Companion of the Order of Canada, the Gold Medal from both the Royal Architectural Institute of Canada and the American Institute of Architects, la Medaille du Merite from the Order of Architects of Quebec, Canada, and Israel's Rechter Prize.

Moshe Safdie has been named the 2019 Wolf Prize Laureate in Architecture by the International Wolf Foundation. The Wolf Prize is considered the second most important in the world after the Nobel Prize. It is also Israel's most distinctive international award, bestowed upon luminaries for their accomplishments in advancing science and art for the benefit of humanity.

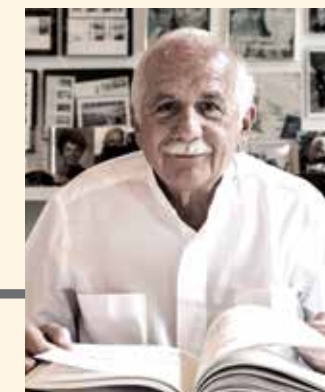


Photo courtesy of Michal Bornen Safdie



RISING ABOVE THE SINGAPORE EDITION HOTEL

The two residential towers of Boulevard 88 is perched above The Singapore EDITION Hotel.

A unique concept in the lifestyle hotel space conceived by Ian Schrager and Marriott International, The Singapore EDITION Hotel is an iconic eight-storey luxury hotel acclaimed for its artful aesthetic with 204 guest rooms.

Set to reinvigorate the hotel sector, The Singapore EDITION's design and services will offer a distinctive hospitality experience defined by Singapore's embrace of the future, technology, arts and culture. It will be a place where travellers and locals alike will want to congregate, to celebrate and contemplate life.

For Schrager, the EDITION Hotel is the next chapter in the luxury and lifestyle hotel story. Now open in New York, London, Shanghai and other major cities, he has secured his reputation in delivering a truly distinct brand that sets itself apart from anything else currently in the hospitality realm.

THE
SINGAPORE
EDITION



View from Cuscaden Road



AN EXPANSIVE RESIDENCE OF EXQUISITE TASTE

Boulevard 88, a new 28-storey freehold address like no other, is a haven of peace and beauty in the heart of Orchard Boulevard. Experience the privilege of open spaces that offer comfort and tranquility in a stunningly crafted sanctuary. The iconic residential towers are elevated to provide unrivalled views, now yours to own.

Spanning the two residential towers at the top is the Sky Boulevard, creating a dramatic tall 'urban window' and an outstanding skyline silhouette that is visible from the city's surround.

THE GRAND DESIGN OF A
STYLISH WELCOME



Be greeted by the signature canopy of rain trees along Orchard Boulevard and a welcoming drop-off lobby, as you return home.



Residential Lobby

Artist's Impression

SIGNATURE EXPERIENCES

The Arrival Lobby at the Boulevard 88 is surrounded by lush, verdant greenery and the outdoor Verde Gardens give respite from the busyness of the city. Be welcomed by hospitality-trained Residential Hosts who are ever-ready to cater to your needs. Residents will have access to a selection of a la carte services* thoughtfully tailored for a perfectly serviced life.

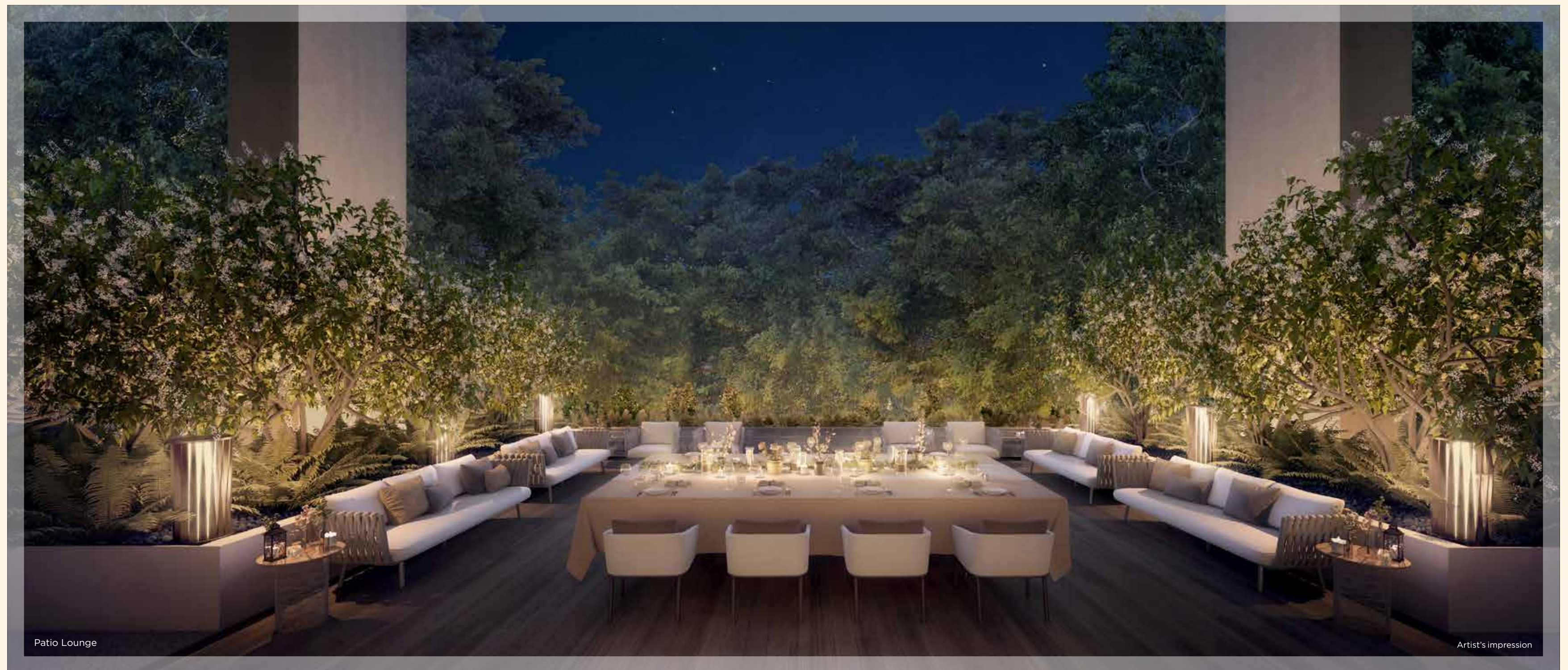
* Please note that these services are chargeable and are provided by third-party vendors. Our Residential Hosts will assist in making arrangements but residents will have to bear all chargeable costs incurred. Services may be modified according to availability and at the discretion of the operator. Terms and conditions apply. All information is current at the time of printing and is subject to change.



For illustration only

From the food to the hiring of entertainment and private chefs, we are here to assist.

A LUSH SPACE FOR INDULGENCE



Patio Lounge

Artist's impression

Enchanting and enlivening, the Patio Lounge on level 2 presents the unique opportunity to host lavish outdoor parties for your distinguished guests. An exceptional lifestyle that lets you experience a new dimension of sophistication in home entertainment.

THE CROWNING GLORY

Like an iconic art piece, a great architecture can elevate a building to one that stands as a landmark. The Sky Boulevard, the stunning crown of Boulevard 88 is designed not just to frame the view, but to define an extraordinary urban sanctuary in the heart of Orchard Boulevard.

Artist's impression

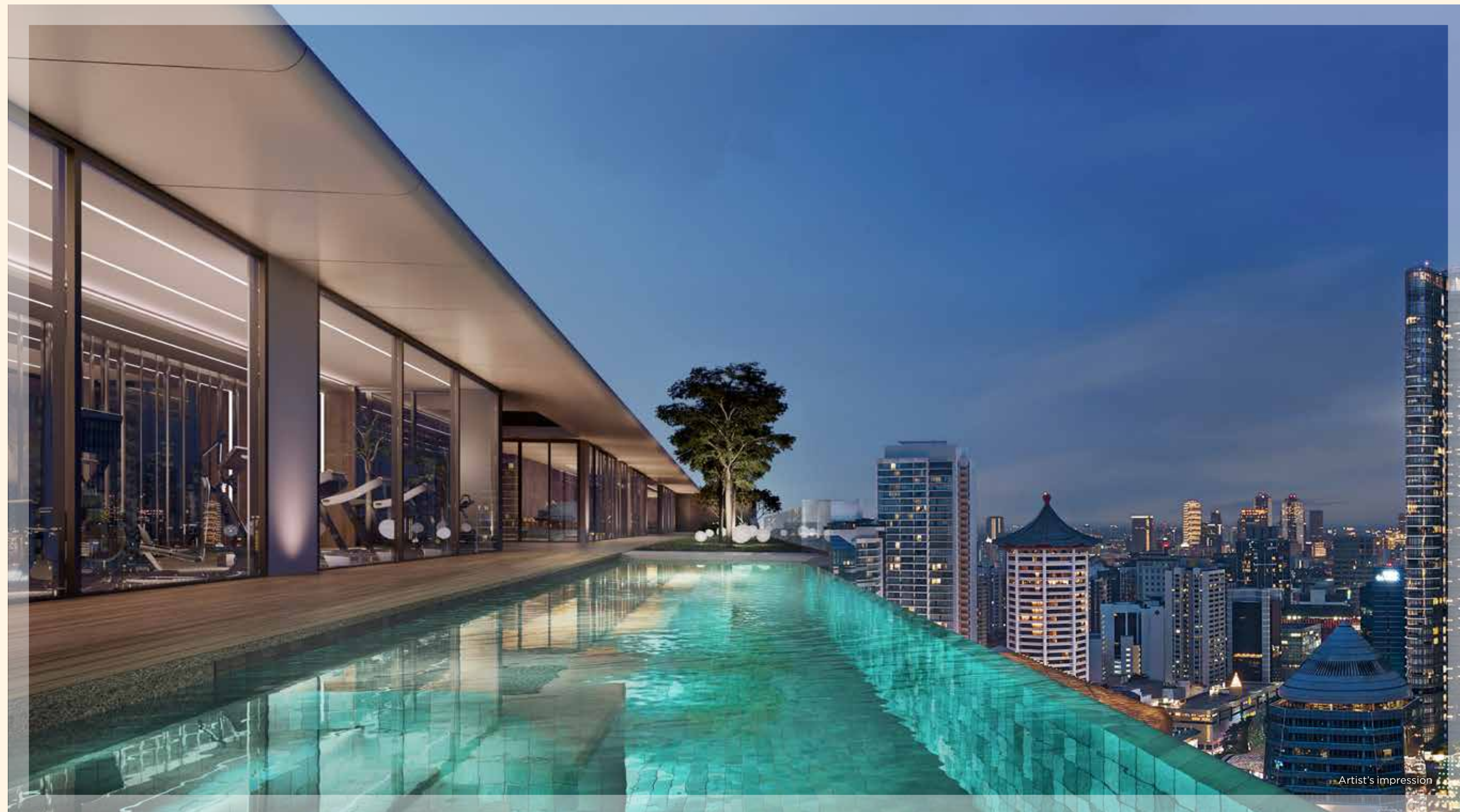


NEW LEVELS OF LUXURY



Sky Club

Artist's impression



Artist's impression

Life is certainly awe-inspiring at the top. Boulevard 88 unlocks access to a plethora of impressive spaces thoughtfully considered to meet your needs. From a generous Sky Club for private social functions; a gourmet Sky Kitchen for fine dining in-house; a Sky Lounge for drinks with a view; a Sky Gym with state-of-the-art equipment to a spectacular Infinity Sky Pool to immerse in luxury.

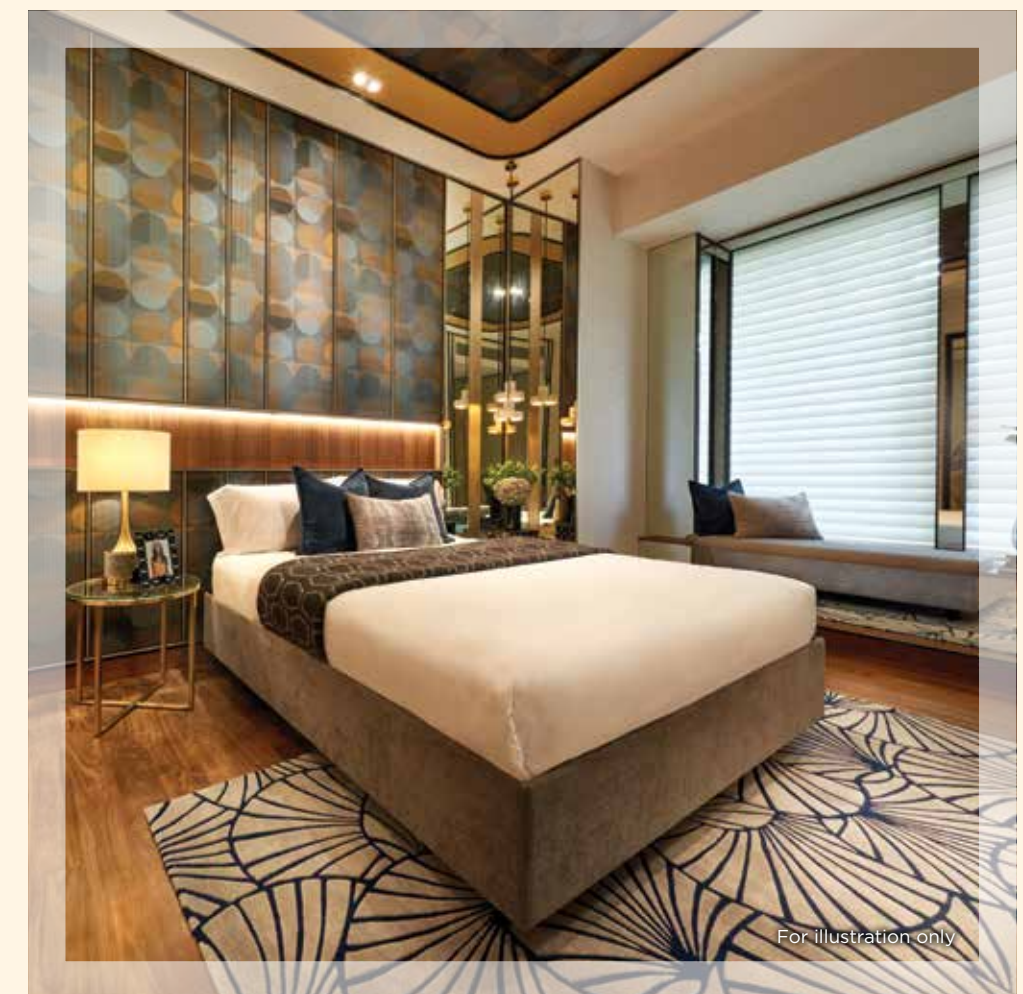
VIEWS FROM THE TOP

Crafted to perfection, Boulevard 88 presents the unparalleled experience of taking in dramatic views of Orchard Road, the lush area of Nassim Hill, the greenery of Bukit Timah and the verdant haven of Singapore Botanic Gardens, a UNESCO World Heritage Site.

Infinity Sky Pool

Artist's impression

OPULENT
INTERIORS
CURATED
FITTINGS



A SPACE THAT INSPIRES
NEW DIMENSIONS OF LUXURY



Designed to enhance the expanse of space, every conceivable detail in Boulevard 88 has been addressed to let life flow. Best of all, its freehold status is a vivid celebration of the finer things in life for generations to enjoy. With 154 fine residences, whichever home you choose from two-bedroom + study, three-bedroom to four-bedroom units and penthouses, each and every one is positioned for supreme privacy. And the view? Nothing less than magnificent with a layout that is created for the fullest appreciation of the panorama.

A SANCTUARY CRAFTED FOR YOUR SENSES



In the bedroom, a good night's rest is assured with a spatial layout that allows more room for individuality. It's your inner sanctum of calm to linger, lounge or luxuriate. At Boulevard 88, only the finest quality materials and fittings are considered, such as the Italian Caccaro Wardrobe.



This indulgence extends to the bathroom as well with the utmost attention to detail. The master bath is elegantly finished with Van Gogh accent marble and fitted with designer collections from Antonio Lupi and Hansgrohe AXOR Citterio E, thoughtfully curated to suit your discerning lifestyle.

CURATED FOR SOPHISTICATED TASTES



It's a rarefied world indeed when taste and space dictate both the dining and kitchen areas. Only top-of-the-line kitchen cabinetry from the Ernestomeda Icon series is considered.

THE CHARMS OF A SMARTER HOME



Even the finest homes need to be safe and secure. Smart home technology keeps everyday security and living conveniences well automated using remote access. Equipped with smart home gateway and smart voice assistant - your perfect solution for integrated access control.

A PARTNERSHIP BUILT ON EXCELLENCE



City Developments Limited (CDL) is a leading global real estate operating company with a network spanning 100 locations in 28 countries. With a proven track record of over 50 years in real estate development, investment and management, CDL has developed over 40,000 homes and owns over 18 million square feet of lettable floor area globally. Its diversified land bank offers a solid development pipeline in Singapore as well as its key overseas markets of China, UK, Japan and Australia.



Established in 1968, Hong Leong Holdings Limited (HLHL) is the privately-held property development and investment arm of the Hong Leong Group. As one of the pioneers of the real estate scene in Singapore, HLHL has since emerged as a major player in the property market, making it one of the most sought-after providers of a comfortable home. Together with its sister company City Developments Limited, it is one of the biggest commercial landlords in Singapore's core Central Business District and holds one of the largest non-government residential land bank in Singapore. It has positioned itself as a market leader with quality residential, commercial and mixed-use projects in some of Singapore's most coveted neighbourhoods.

LEA INVESTMENTS PTE LTD

Lea Investments Pte Ltd is a related company of Goodwood Park Hotel.

BOULEVARD 88

FOR THE PLEASURE
OF OWNERSHIP,
PLEASE CALL
(65) 6877 1818

enquiries@cdl.com.sg
www.cdlhomes.com.sg

• Vendor (Developer): Granmil Holdings Pte Ltd (UEN No. 199702861E) (A joint venture amongst Hong Leong Holdings Limited (UEN No. 196800290Z), City Developments Limited (UEN No. 196300316Z) and Lea Investments Pte Ltd (UEN No. 199308144N) • Tenure of Land: Estate in Fee Simple (Freehold) • Encumbrances on the Land: Mortgage IE/719666K in favour of DBS Bank Ltd • Lot No.: Lot(s) 1076V, 1078T, 1136T & 1258K TS24 at Orchard Boulevard / Cuscaden Road • Developer Licence No.: B1463 (Amendment 2) • Expected Date of Vacant Possession: 31 Jan 2023 • Expected Date of Legal Completion: 31 Jan 2026

Reasonable care has been taken in the preparation of this brochure, but the developer does not warrant the accuracy of this brochure. To the extent permissible by law, the statements, information and depictions in this brochure may not be relied upon as statements or representations of fact, and they are not intended to form any part of the contract for the sale of the housing units. In particular, visual representations such as pictures and drawings are artists' impressions only, and are not representations of fact. The brand, colour and model of all materials, fittings, equipment, finishes, installations and appliances supplied shall be provided subject to the developer's architect's selection, market availability and the sole discretion of the developer. All information contained in this brochure are current at the time of printing, and are subject to such changes as are required by the relevant authorities or the developer. The floor areas stated in the brochure are approximate measurements and subject to final survey.

This brochure is printed on eco-friendly paper, 22 February 2019.

