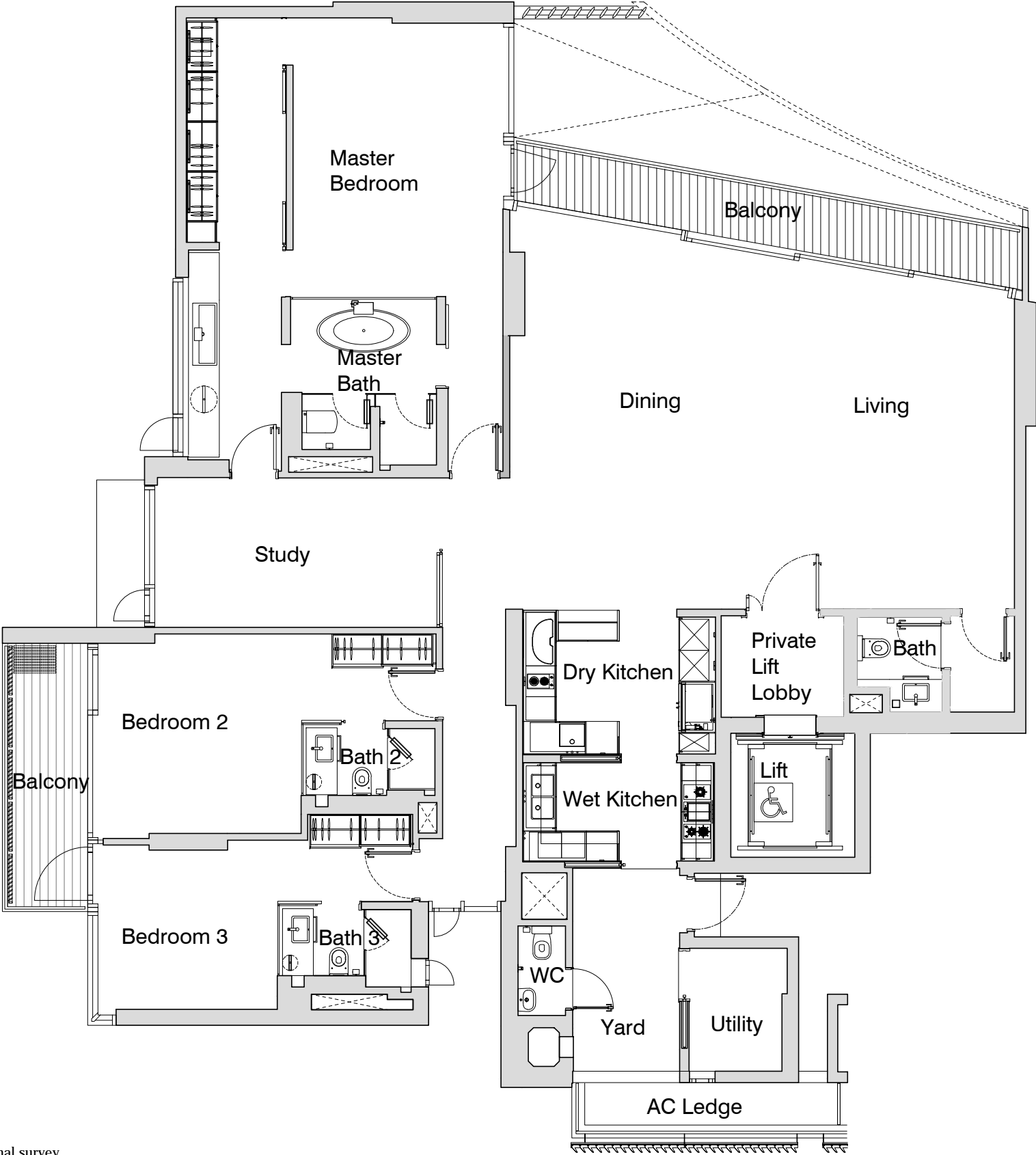


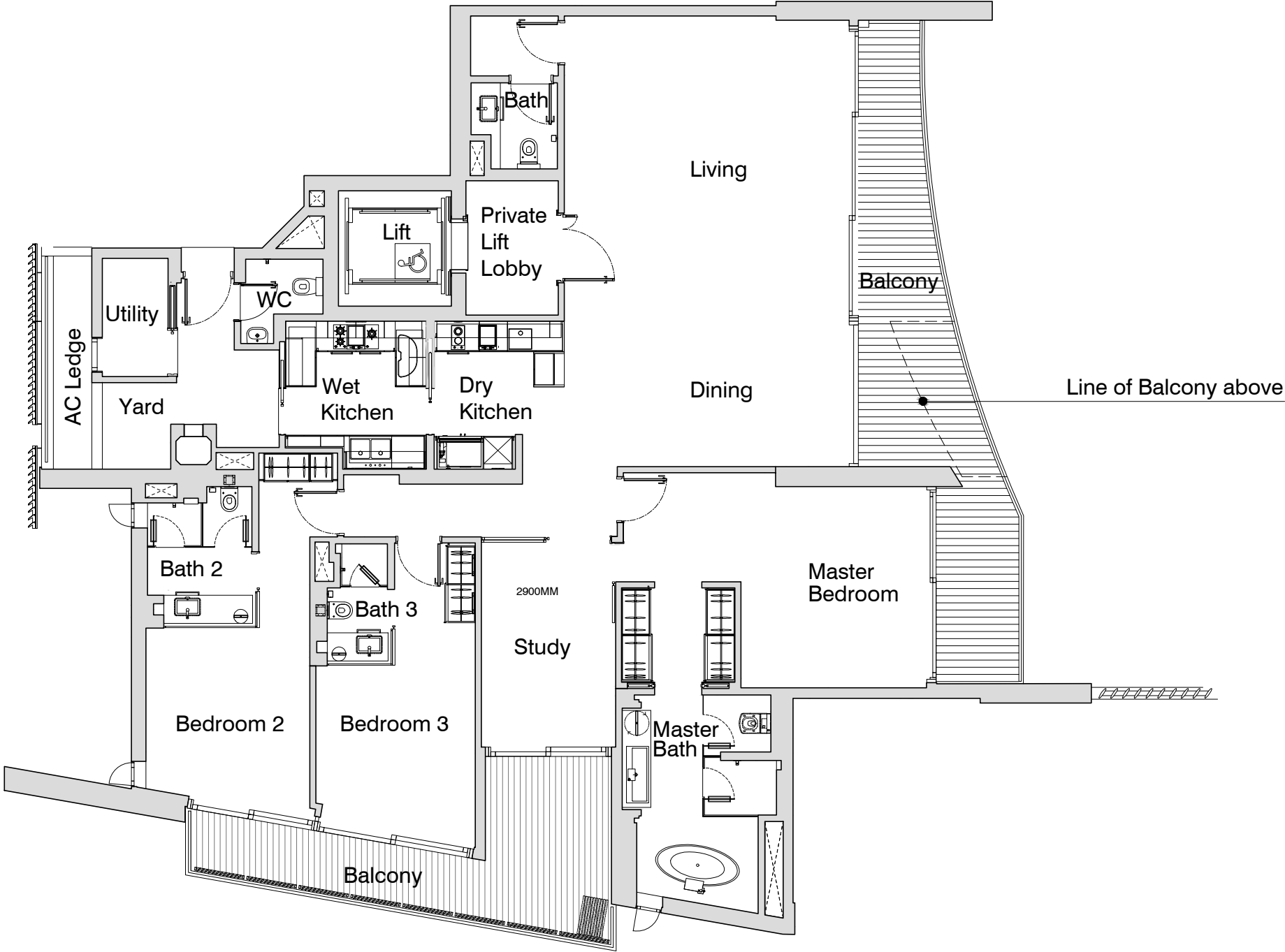
# Type C1 Typical(3+1Br) [BP09 SUBMISSION SET]



**Note:**  
1. Boundaries are provisional and subject to alternation on final survey  
2. For final layout and latest building details, please refer to latest approved drawing plan

BP Approval: A1252-00482-2011-BP09 (23 03 2016)

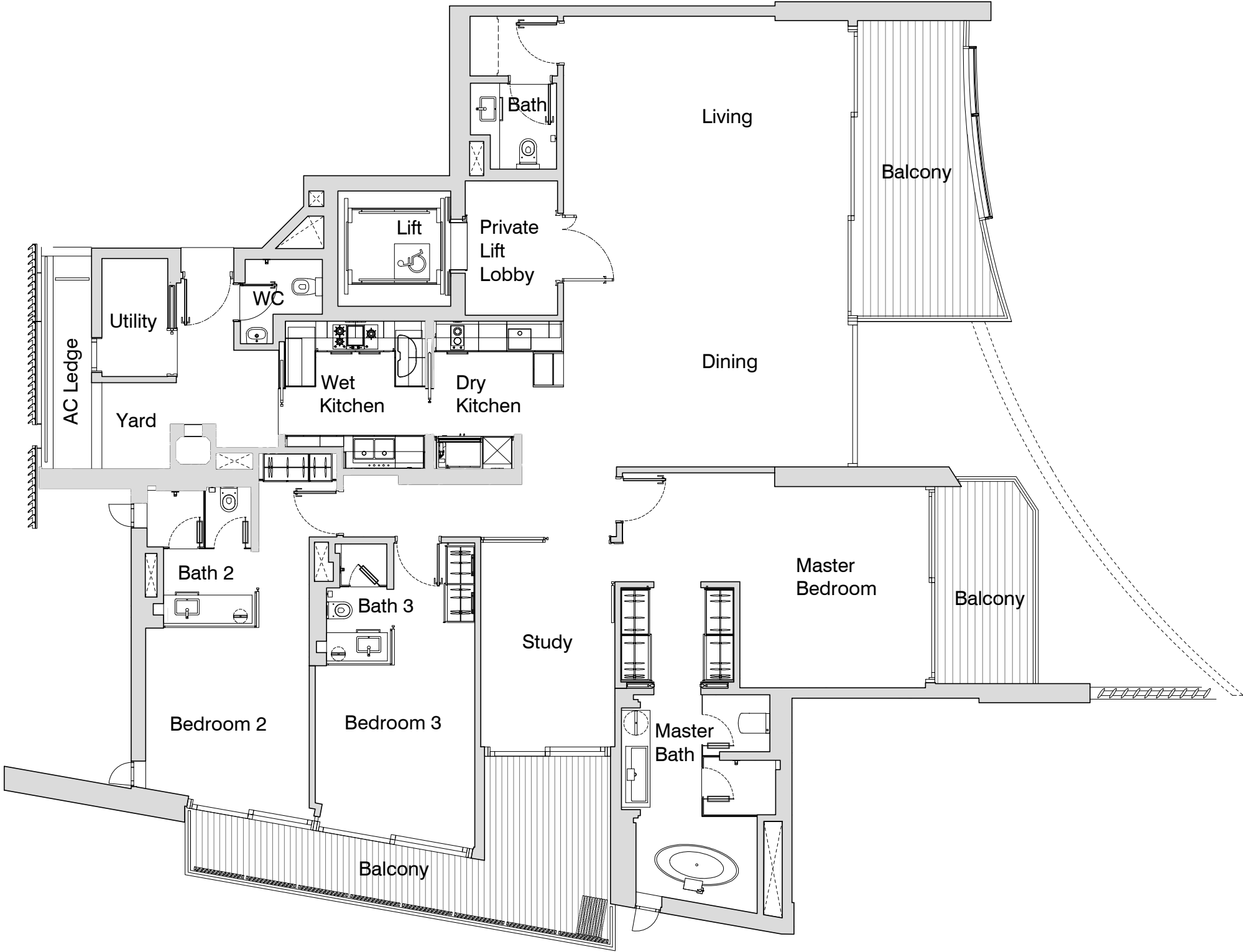
# Type D1a @L5 (3+1Br) [BP09 SUBMISSION SET]



**Note:**  
1. Boundaries are provisional and subject to alternation on final survey  
2. For final layout and latest building details, please refer to latest approved drawing plan

BP Approval: A1252-00482-2011-BP09 (23 03 2016)

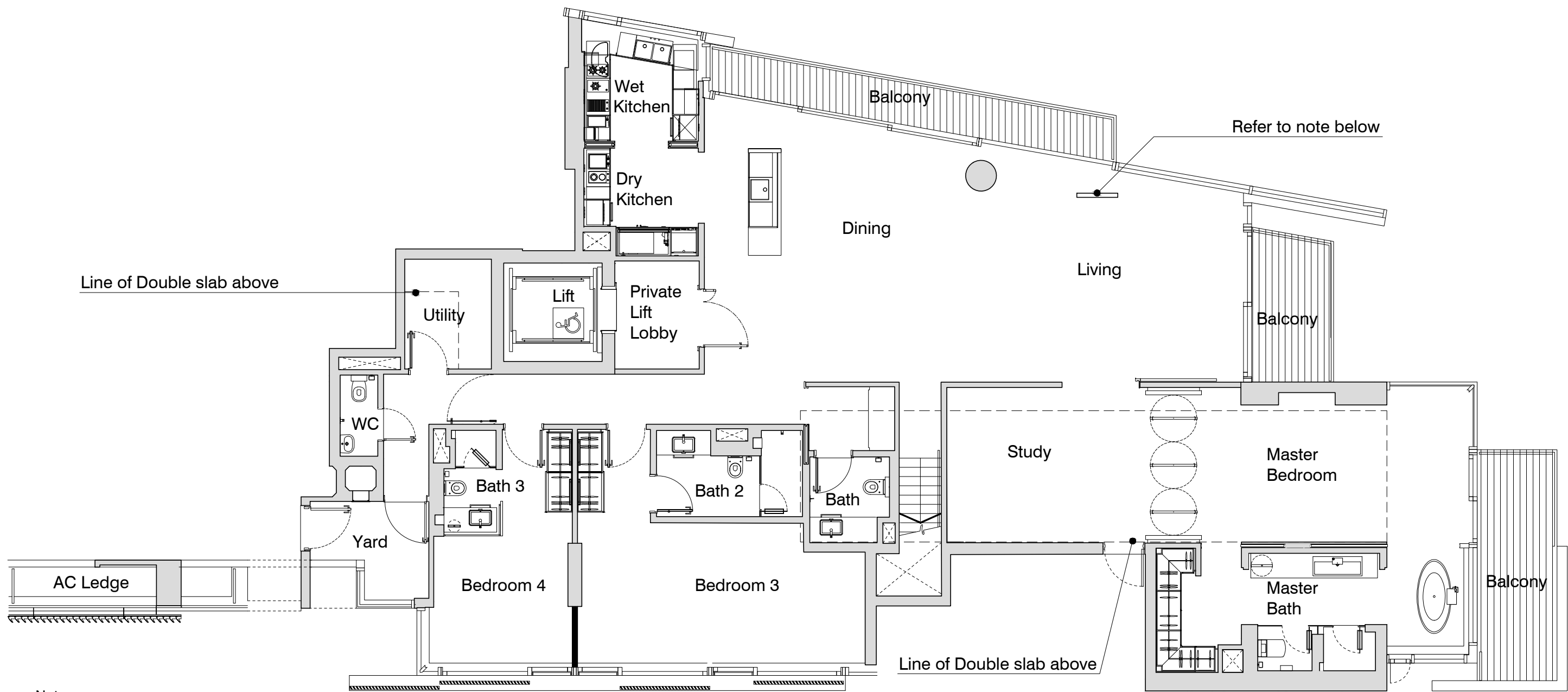
# Type D1 Typical (7th & 8th) (3+1Br) [BP09 SUBMISSION SET]



- Note:
- 1. Boundaries are provisional and subject to alternation on final survey
  - 2. For final layout and latest building details, please refer to latest approved drawing plan

# Type Ph A Lower 4+1Br [BP09 SUBMISSION SET]

#10-01 (6469sqft)

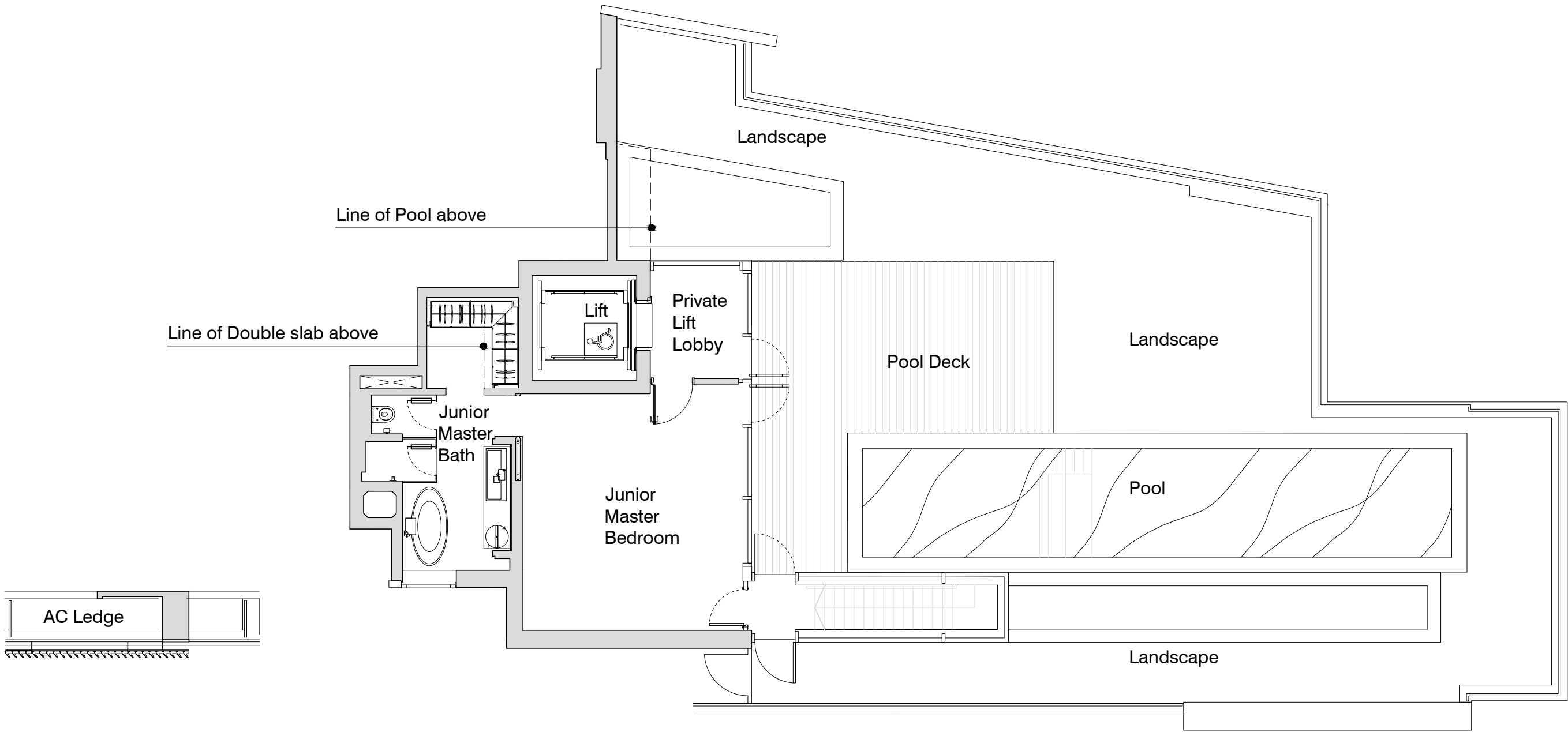


- Note:
- 1. Low wall is built up to the height of approximately 540mm only
  - 2. Boundaries are provisional and subject to alternation on final survey
  - 3. For final layout and latest building details, please refer to latest approved drawing plan

BP Approval: A1252-00482-2011-BP09 (23 03 2016)

Type Ph A Upper(4+1Br) [BP09 SUBMISSION SET]

#10-01



- Note:
- 1. Boundaries are provisional and subject to alternation on final survey
  - 2. For final layout and latest building details, please refer to latest approved drawing plan

BP Approval: A1252-00482-2011-BP09 (23 03 2016)

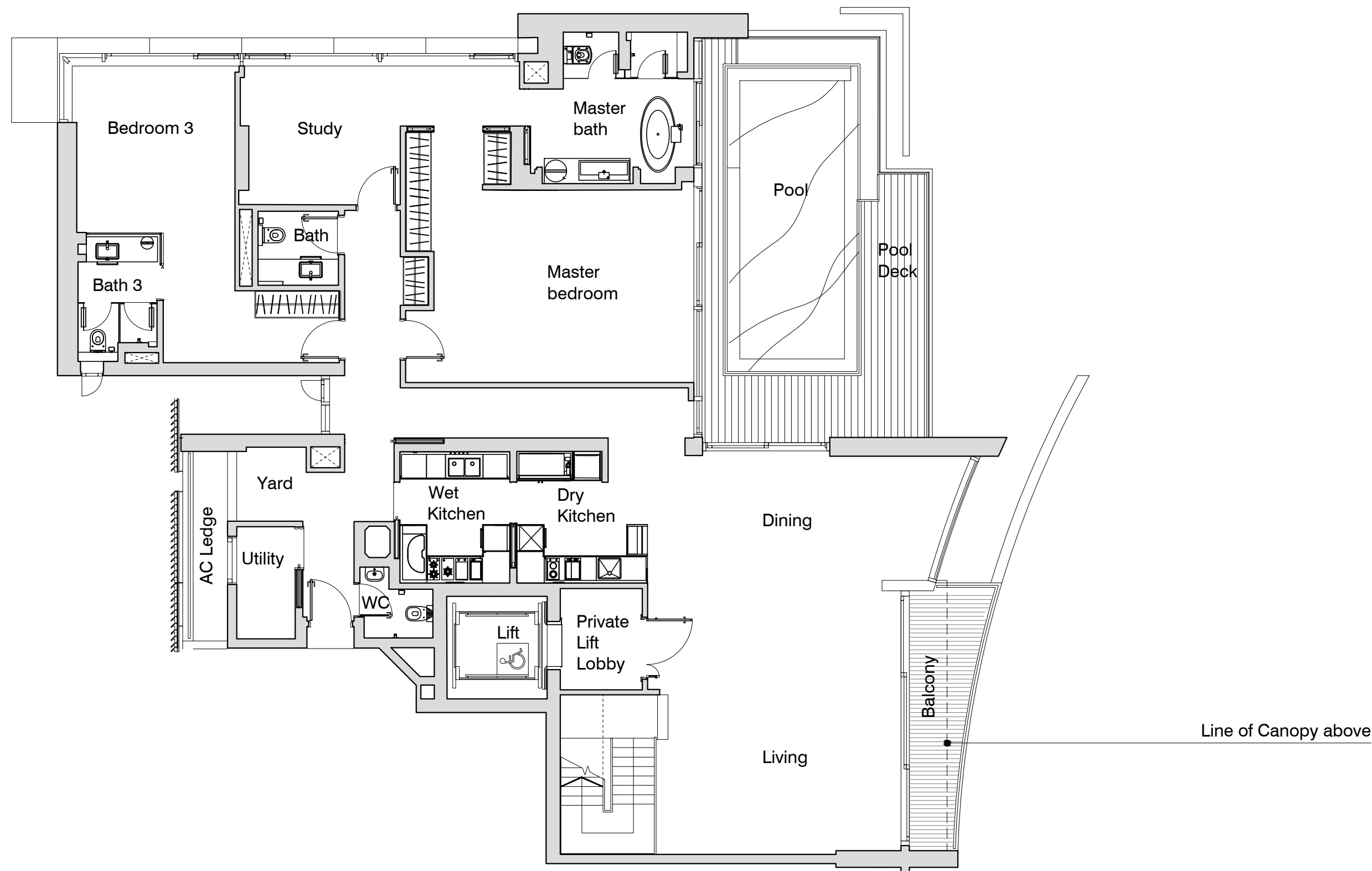
SCALE 1:100



CAPITOL DEVELOPMENT

# Type PH E Lower(5+1Br) [BP09 SUBMISSION SET]

#11-05 (6609sqft)



Note:  
1. Boundaries are provisional and subject to alternation on final survey  
2. For final layout and latest building details, please refer to latest approved drawing plan

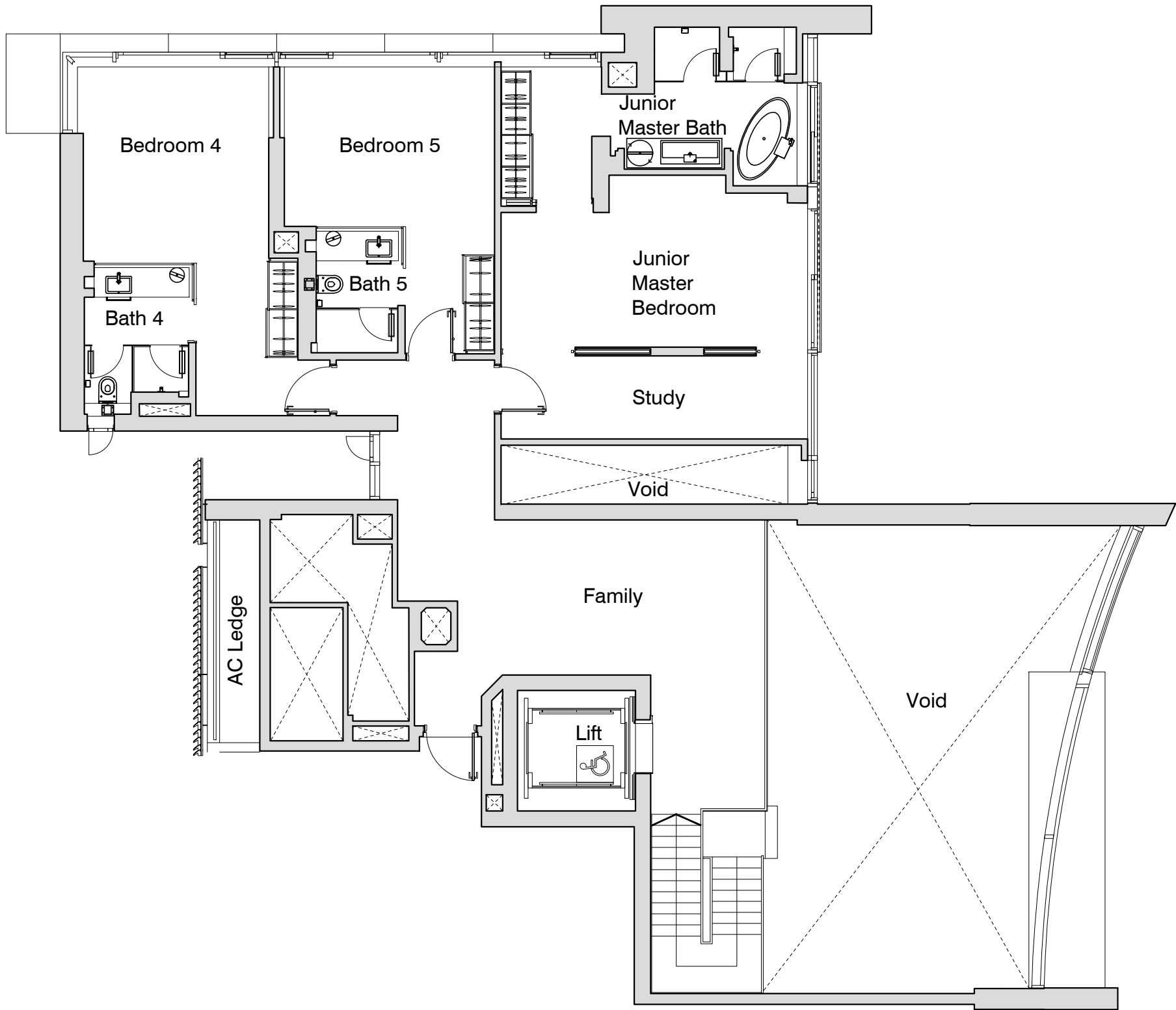
BP Approval: A1252-00482-2011-BP09 (23 03 2016)

SCALE 1:100 0 0.5 1 1.5 2 3 4 5 M

CAPITOL DEVELOPMENT

# Type PH E Upper(5+1Br) [BP09 SUBMISSION SET]

#11-05 (6609sqft)



**Note:**  
1. Boundaries are provisional and subject to alternation on final survey  
2. For final layout and latest building details, please refer to latest approved drawing plan

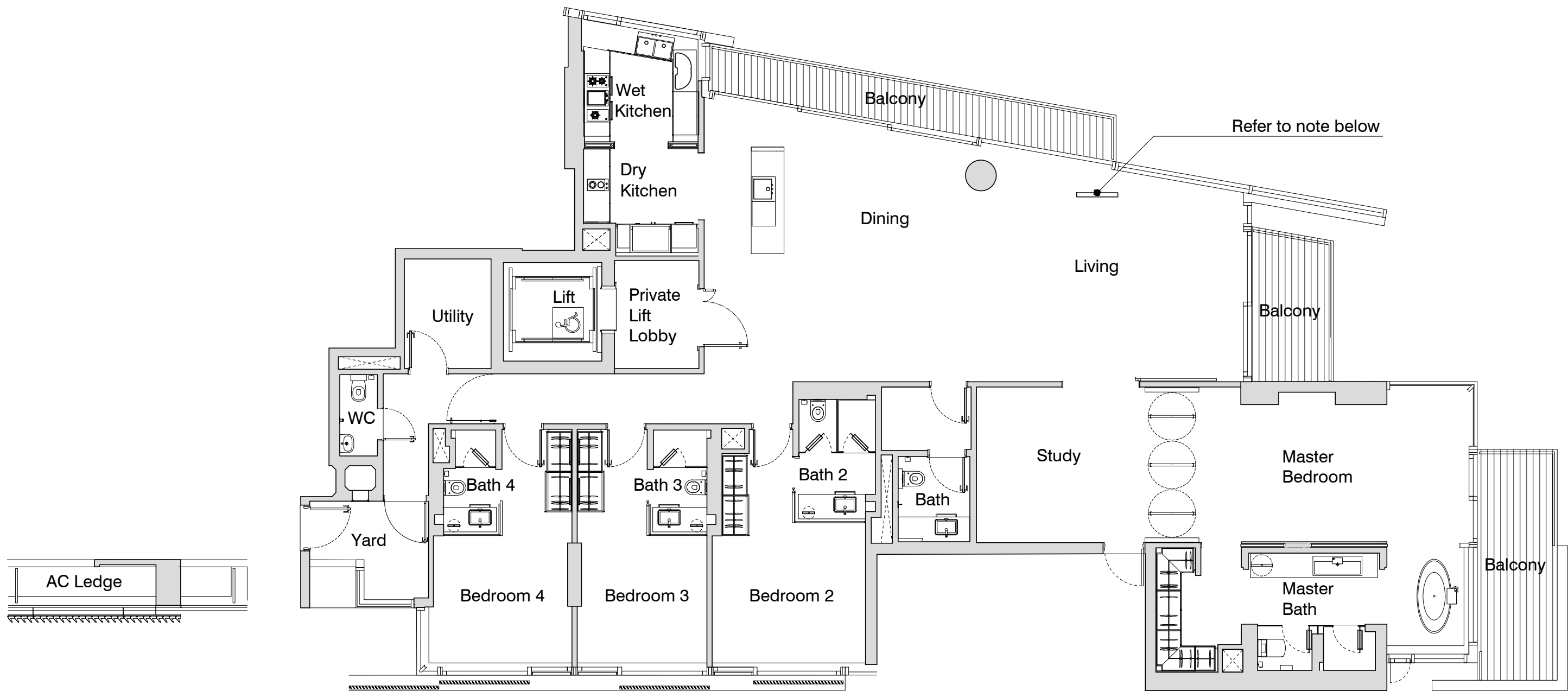
BP Approval: A1252-00482-2011-BP09 (23 03 2016)

SCALE 1:100 0 0.5 1 1.5 2 3 4 5 M

CAPITOL DEVELOPMENT

# Type A1 Typical(4+1Br) [BP09 SUBMISSION SET]

#05-01 (3391)sqft

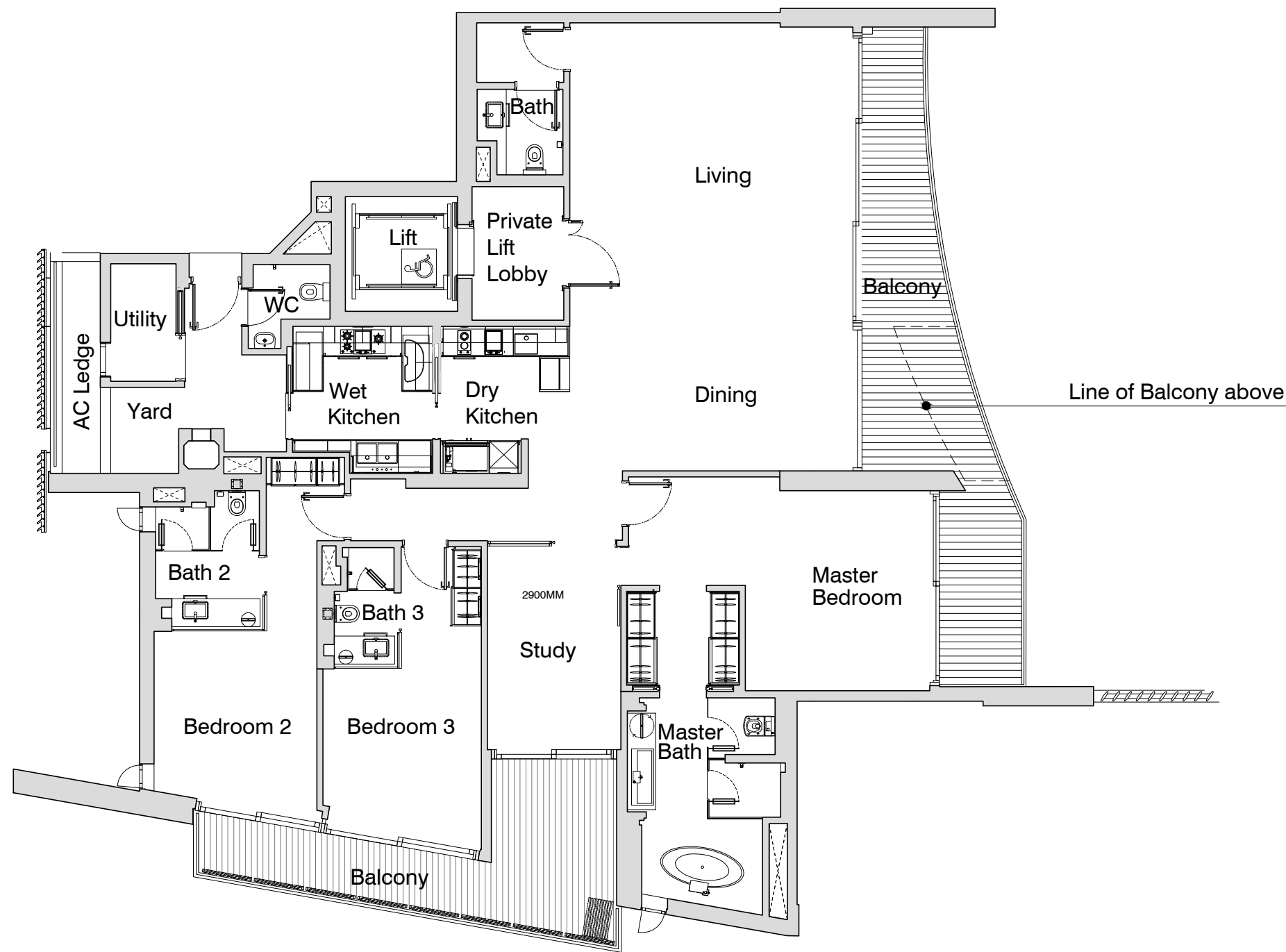


- Note:
- 1. Low wall is built up to the height of approximately 540mm only
  - 2. Boundaries are provisional and subject to alternation on final survey
  - 3. For final layout and latest building details, please refer to latest approved drawing plan

BP Approval: A1252-00482-2011-BP09 (23 03 2016)

# Type D1a @L5 (3+1Br) [BP09 SUBMISSION SET]

#05-04 (3068sqft)



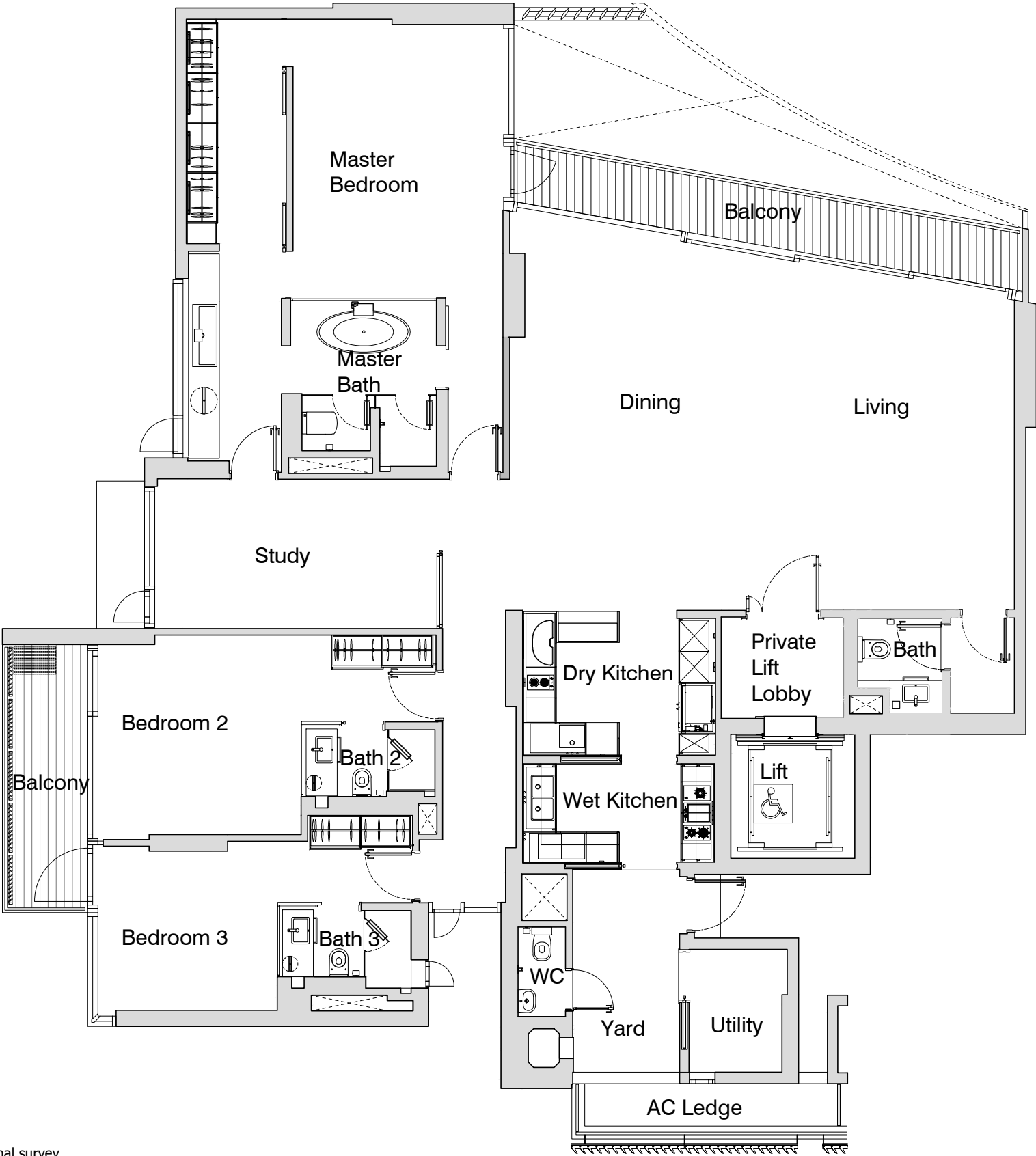
Note:  
1. Boundaries are provisional and subject to alternation on final survey  
2. For final layout and latest building details, please refer to latest approved drawing plan

BP Approval: A1252-00482-2011-BP09 (23 03 2016)

# Type C1 Typical(3+1Br) [BP09 SUBMISSION SET]

#05-03 (3003sqft)

#09-03



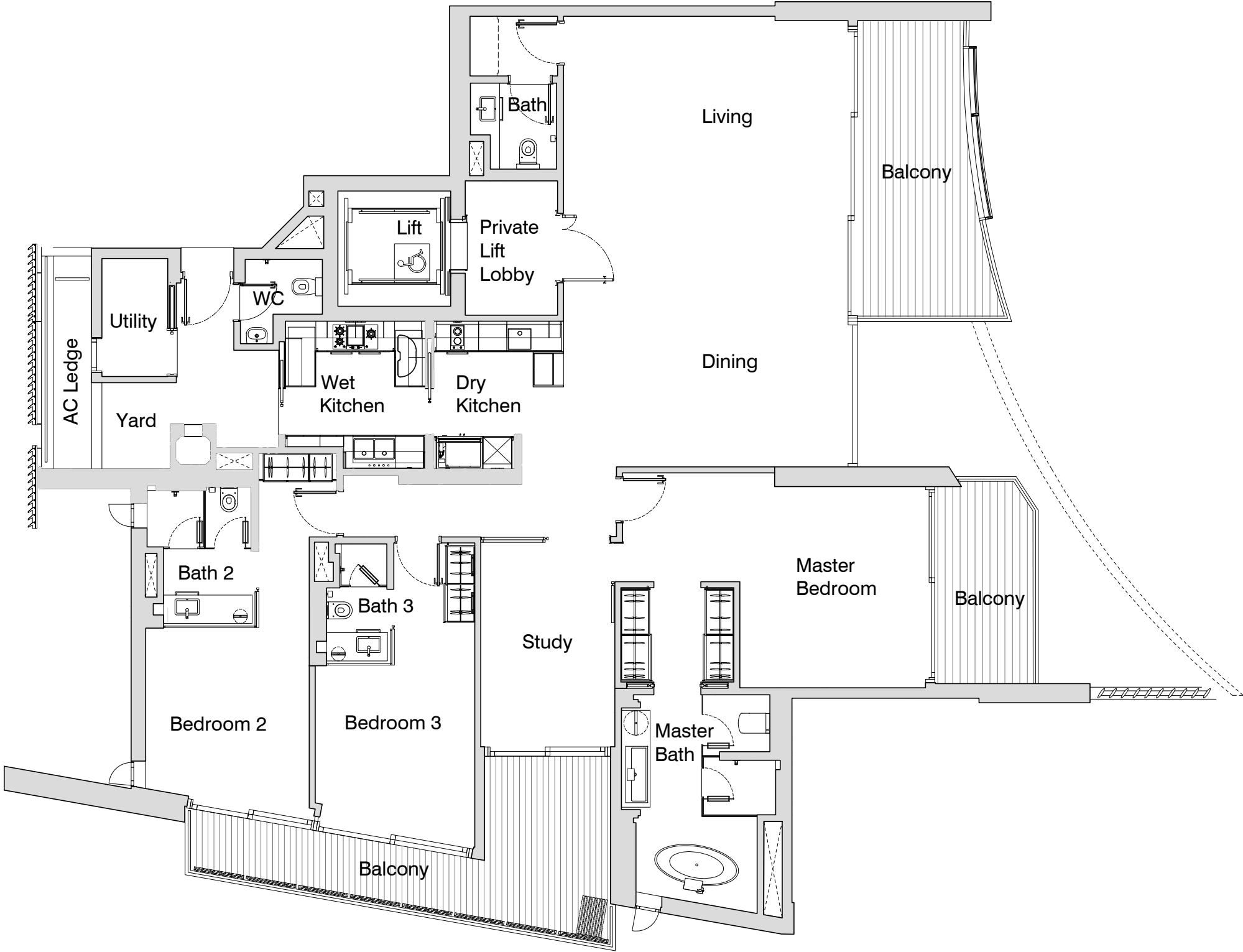
**Note:**  
1. Boundaries are provisional and subject to alternation on final survey  
2. For final layout and latest building details, please refer to latest approved drawing plan

BP Approval: A1252-00482-2011-BP09 (23 03 2016)

# Type D1 Typical (7th & 8th) (3+1Br) [BP09 SUBMISSION SET]

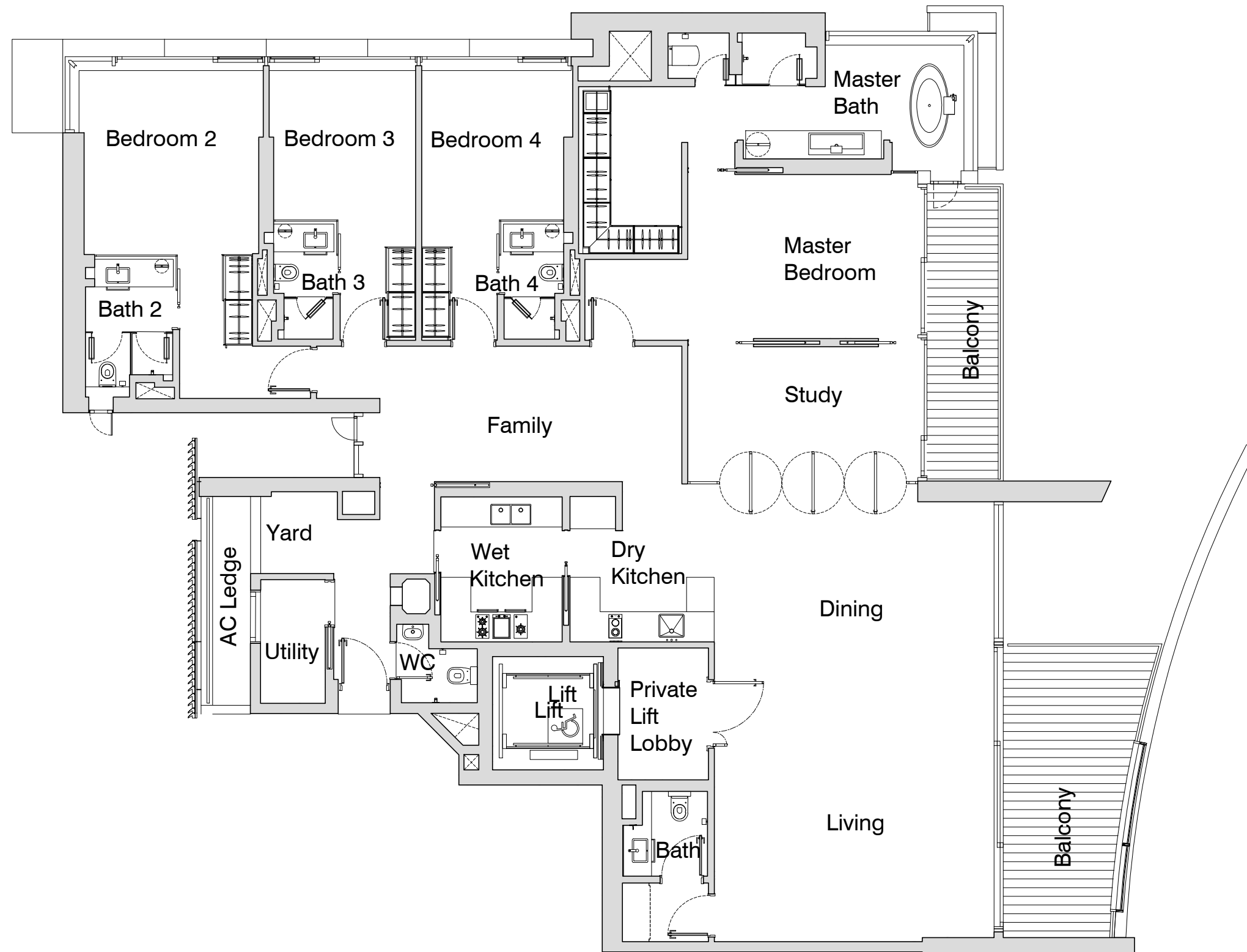
#08-04 (3068sqft)

#10-04



Note:  
1. Boundaries are provisional and subject to alternation on final survey  
2. For final layout and latest building details, please refer to latest approved drawing plan

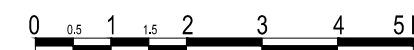
## #08-05 (3369sqft)



Note: 1. Boundaries are provisional and subject to alteration on final survey.  
2. For final layout and latest building details, please refer to the latest approved building plan.

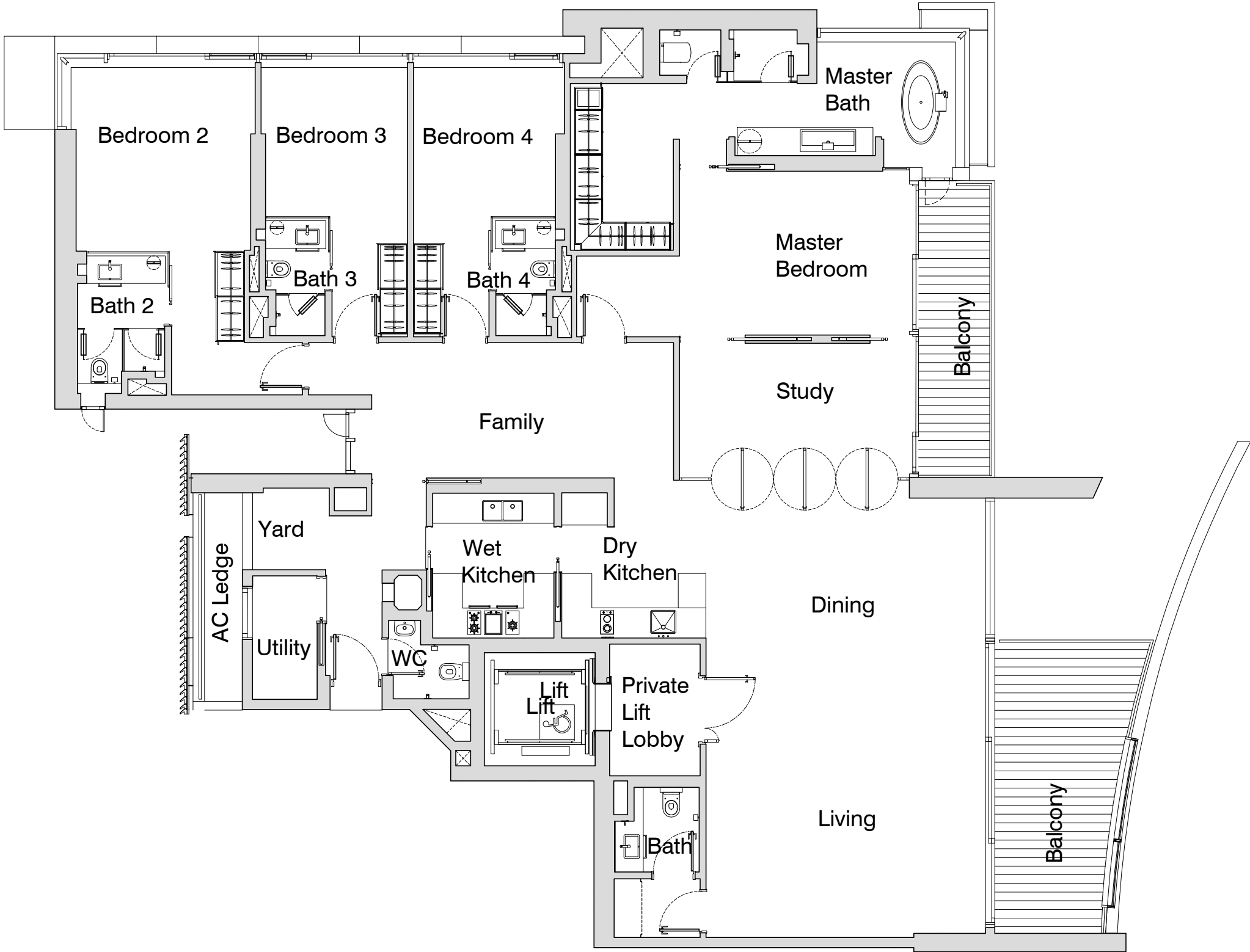
BP Approval: A1252-00482-2011-BP08 (XX XXX 2016)

SCALE 1:100



## M CAPITOL DEVELOPMENT

## Type E1 Typical(7th &amp; 8th) (4+1Br) [BP09 SUBMISSION SET]



Note: 1. Boundaries are provisional and subject to alteration on final survey.  
2. For final layout and latest building details, please refer to the latest approved building plan.

BP Approval: A1252-00482-2011-BP08 (XX XXX 2016)

SCALE 1:100



## CAPITOL DEVELOPMENT