

# LE NOUVEL ARDMORE

S I N G A P O R E

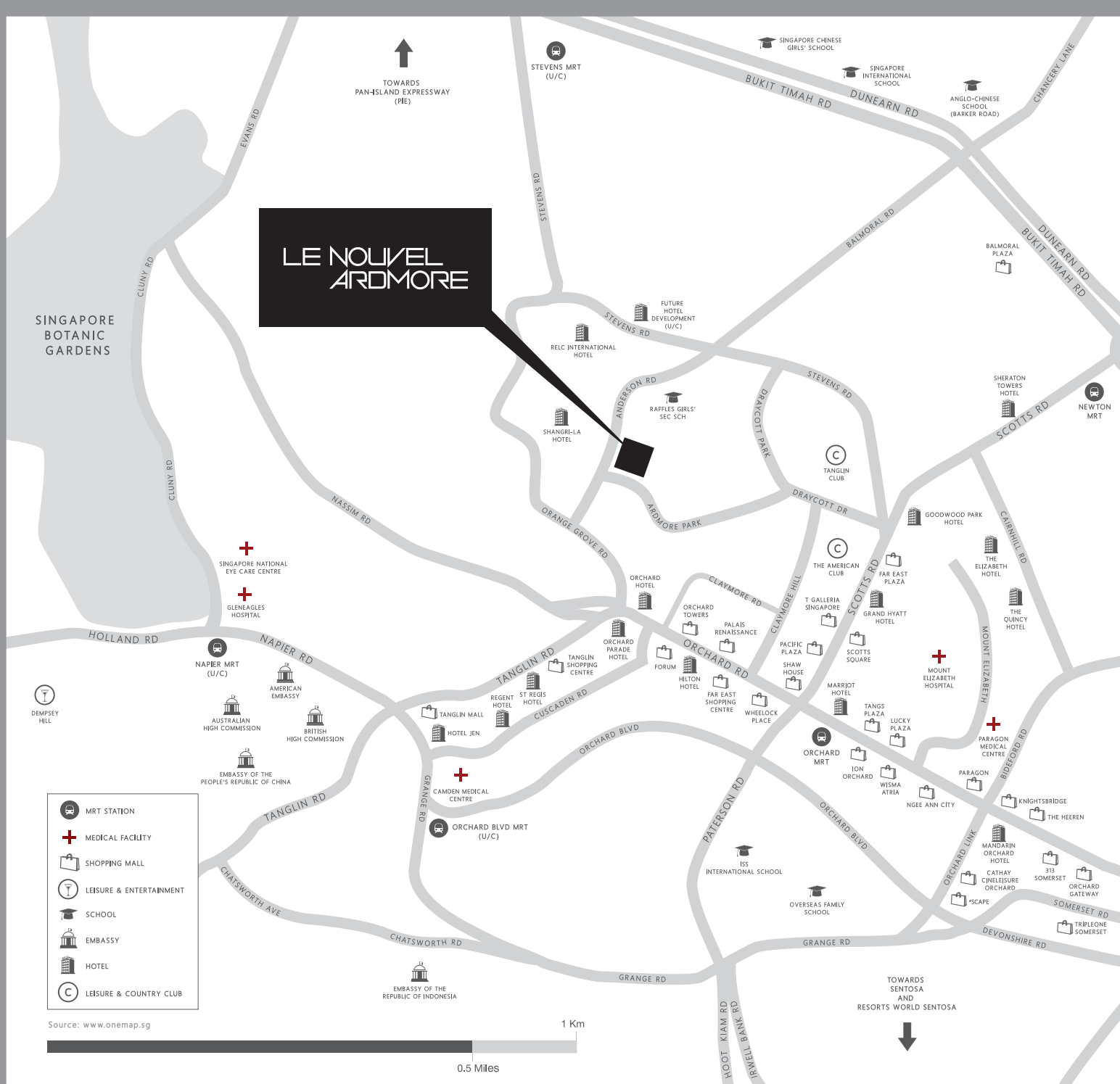


## *Dynamic,* BY DESIGN

A freehold development with only two apartments per floor across a single 33-storey tower and crowned by a single Penthouse - 43 immaculate residences, each with its own private lift, offer space, privacy and exclusivity. Complemented with unblocked views of the Good Class Bungalow neighbourhood in Nassim, and overlooking the surrounding Ardmore and Claymore districts.

Le Nouvel Ardmore's innovative façade creatively uses lights and the transparency of glass, to create a randomly changing symphony of complex grid and screen divisions, where a captivating luminescent façade is ultimately showcased.

Le Nouvel Ardmore is ready for immediate occupation.



## *Eluding all but* THE VERY FEW

Le Nouvel Ardmore, at 1A Ardmore Park. A distinct address that stands apart from all others. Close to the lively Orchard Road shopping belt, yet enjoying an exclusive sense of tranquillity and privacy. A rare privilege.

Residents will find lifestyle, educational and medical amenities within the immediate radius, as well as seamless connectivity to the rest of the island via major roads and expressways.

# LE NOUVEL ARDMORE

## G R O U N D L E V E L

- |  |                         |                       |                   |
|--|-------------------------|-----------------------|-------------------|
| 1 CLUBHOUSE                                      | 5 CHILDREN'S POOL       | 9 SCULPTURE WALL      | 13 CONCIERGE DESK |
| 2 ANNEX TERRACE EXTENSION<br>FOR OUTDOOR HOSTING | 6 CHILDREN'S PLAYGROUND | 10 FEATURE WATER-WALL | 14 DROP-OFF POINT |
| 3 50M LAP POOL                                   | 7 READING DECK          | 11 REFLECTIVE POOL    |                   |
| 4 JACUZZI SEATS                                  | 8 TENNIS COURT          | 12 BIO POND           |                   |



S I T E P L A N  
G R O U N D L E V E L

*Befitting your pace*  
OF LIFE

The ground level comes with reflective and children's pools and a tennis court. It also features a clubhouse with an adjoining outdoor terrace, a fridge, coffee machine and an entertainment system. A perfect place for residents to indulge every social need.

A reading corner, adjacent to expansive water features and juxtaposed against extensive landscaping, creates a relaxing ambience where you can take a step back from the daily rush of life.

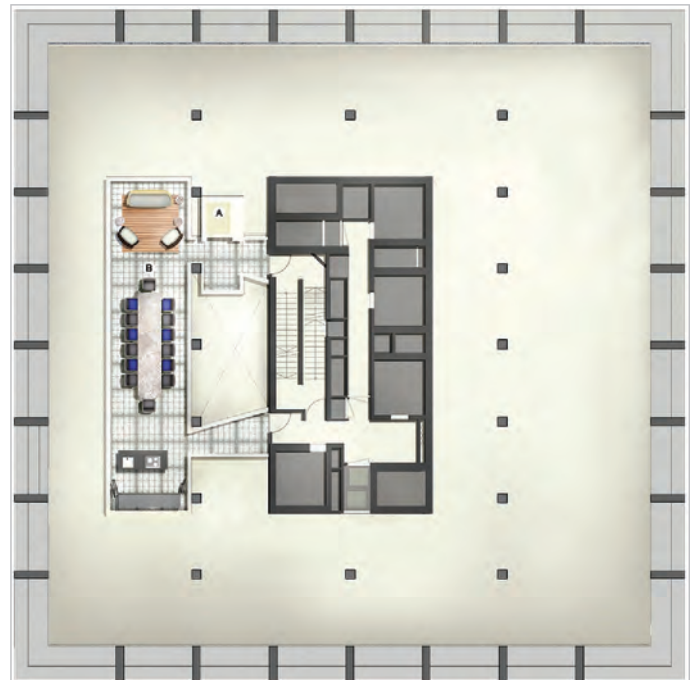
# LE NOUVEL ARDMORE

L E V E L 2 6 & 2 7

- |                                     |   |                              |
|-------------------------------------|---|------------------------------|
| 1 CONCIERGE & JUICE BAR COUNTER     | 7 JACUZZIS  | A GLASS LIFT                 |
| 2 SKY POOL                          | 8 SHOWER & STEAM ROOMS  | B AL FRESCO DINING MEZZANINE |
| 3 LOUNGING DECK                     | 9 POWDER ROOMS  |                              |
| 4 GYMNASIUM                         | 10 RELAXATION FOYER   |                              |
| 5 DECK FOR YOGA / PILATES EXERCISES | 11 GLASS LIFT TO 27TH FLOOR AL FRESCO DINING MEZZANINE WITH CASUAL LOUNGE SEATING |                              |
| 6 SPA SUITES                        |   |                              |



26TH STOREY



27TH STOREY

O B S E R V A T O I R E P L A N S

*Where dining in*  
IS ALWAYS ENTERTAINING

On the 26th floor, the Observatoire showcases a stunning sky pool, Jacuzzis, steam room and private massage suites. It is a setting that undoubtedly transforms every social event, be it a family dinner or a party with friends, into an unforgettable experience for you and your guests.

The private dining mezzanine on the 27th level provides an unobstructed panoramic view of the city skyline. It also comes with a fully equipped kitchen, fit for any private chef to prepare and serve an exclusive meal for your guests.

# LE NOUVEL ARDMORE



L U X U R Y ,   H E I G H T E N E D



I N V I T I N G   T O   T H E   S E N S E S

## *A unity of* DESIGN AND LIFESTYLE

Find a sanctuary in the exquisite interior furnishing for the Suites, Villas and the Penthouse, that come with rare luxurious marble flooring, measuring 1.2 metre by 1.2 metre per slab. Master bedrooms feature imported Poliform walk-in wardrobes, while kitchens are fitted with top-of-the-line Miele appliances and specially imported Siematic kitchen cabinets from Germany.

En-suite bathrooms come with digitally controlled mixers, as well as top of range sanitary ware from Duravit and TOTO. Rooms also enjoy ambient control for lighting and air-conditioning in the family and study areas, and every unit comes equipped with a wine cellar. Create an environment of your choice, befitting any mood and occasion.

# LE NOUVEL ARDMORE

ADDRESS 1A ARDMORE PARK TENURE FREEHOLD TOWER 33 STOREYS

## S U I T E S

**The Suites** have four bedrooms and three / four en-suite bathrooms, living room, dining room, a family or study room, gourmet kitchen and wet kitchen, a private lift foyer, powder room, storage and wine cellar, among others. Certain units also come with an outdoor spa Jacuzzi on the balcony.

■ **TYPE S | 4 BEDROOM SUITE (SINGLE LEVEL)**  
**34 UNITS (3,789 SQ FT - 4,133 SQ FT)**

## V I L L A S

**The Villas** have four bedrooms with en-suite bathrooms. The upper floors include a family / study room, while the lower floors hold a living room, dining room, gourmet kitchen and wet kitchen, among other features.

■ **TYPE V | 4 BEDROOM VILLA (DUPLEX)**  
**8 UNITS (4,058 SQ FT - 5,360 SQ FT)**

## T H E P E N T H O U S E

**The Penthouse** has elegant spacious interiors, with panoramic views of the city skyline. Five expansive en-suite bedrooms come with a master suite and a balcony accompanied by an outdoor spa Jacuzzi in the top duplex. It also features a private basement lobby and lift among other optional amenities, such as a music studio, a private pool and a gymnasium on the top floor. The Penthouse unit covers 13,875 square feet of living space, inclusive of the private lift foyer in the basement.

■ **TYPE P | THE PENTHOUSE (DUPLEX)**  
**(13,875 SQ FT) \*WITH DEDICATED BASEMENT LOBBY AND LIFT**

#32-01  
P1

#31-01  
S6

#31-02  
S7

#30-01  
S6

#30-02  
S7

#29-01  
S6

#29-02  
S7

#28-01  
S6

#28-02  
S7

OBSERVATOIRE

#25-01  
S1

#25-02  
S2

#24-01  
S1

#24-02  
S2

#23-01  
S1-t

#23-02  
S2-t

#22-01  
S5

#21-02  
V3

#21-01  
S5

#19-02  
V3-t

#20-01  
S5

#19-01  
S5-t

#17-01  
V1-t

#18-02  
S3

#17-02  
S3-t

#15-01  
V2

#16-02  
S4

#15-02  
S4-a

#13-01  
V2

#14-02  
S4

#13-02  
S4-a

#11-01  
V2-t

#12-02  
S4

#11-02  
S4-t

#09-01  
V1

#10-02  
S3

#09-02  
S3

#07-01  
V1-t

#08-02  
S3

#07-02  
S3-t

#06-01  
S1

#06-02  
S2

#05-01  
S1

#05-02  
S2

VOID

ARRIVAL AND CONCIERGE

BASEMENT CARPARK

# LE NOUVEL ARDMORE



S E R V I C E   A S   Y O U ' V E   C O M E   T O   E X P E C T



T H E R E   T O   A L W A Y S   A S S I S T

## *Attention* TO EVERY DETAIL

Our service ambassadors from Lanson Place lifestyle offer a comprehensive range of concierge services. There is always someone present to be of service to you and your guests at the Clubhouse and concierge desks at the Observatoire. From providing onsite recreational and function booking services, to assisting with travel and transportation recommendations, laundry and housekeeping service arrangements, they are ready to facilitate every facet of your life.

\*All third-party costs and expenses are to be borne by the purchaser/resident.

# LE NOUVEL ARDMORE

## *The artisans*

### BEHIND THE VISION

Jean Nouvel - Principal Architect

"Persistence, imagination, exuberance, and, above all, an insatiable urge for creative experimentation" were words used to describe the work of Le Nouvel Ardmore principal architect Jean Nouvel, when he was awarded the prestigious 2008 Pritzker Architecture Prize.

Considered among the world's most innovative architects of his time, his projects transfigure the landscapes in which they stand. Each echoes a style which, while always different, demonstrates his keen perception for the interplay and manipulation of light, shadow, transparency and opacity.

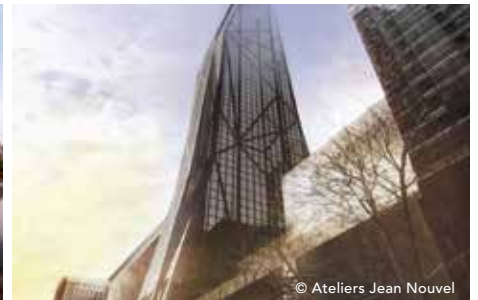
In 2013, Jean Nouvel beat architects Frank Gehry and Zaha Hadid in a competition to design the National Art Museum of China. The museum, located in Beijing, has begun building works. Amongst his world renowned projects are the Louvre Museum in Abu Dhabi and the Tour De Verre in New York.



LOUVRE MUSEUM, ABU DHABI



NATIONAL ART MUSEUM OF CHINA, BEIJING



TOUR DE VERRE, NEW YORK

Le Nouvel Ardmore is the collaborative effort of Jean Nouvel, along with Hervé Descottes, Koichiro Ikebuchi and Sitetectonix.

**Hervé Descottes**, the lighting designer and the founder of L'Observatoire International, is well renowned for his inventive interpretation of light. He has received the AIA Award for Collaborative Achievement in Design for his work.

**Koichiro Ikebuchi**, the interior designer, is well known for crafting interiors that inspire contemplation and an innate empathy with the environment, and is a winner of the President's Design Award in Singapore.

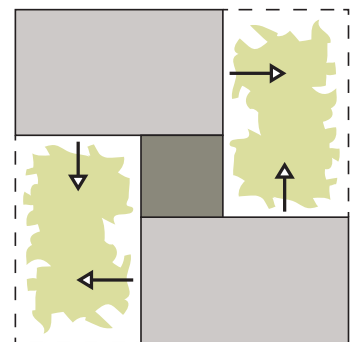
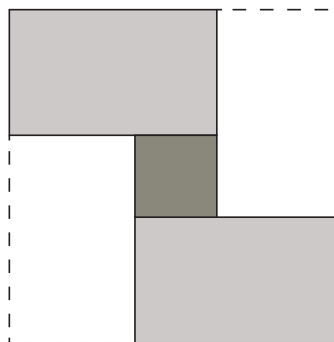
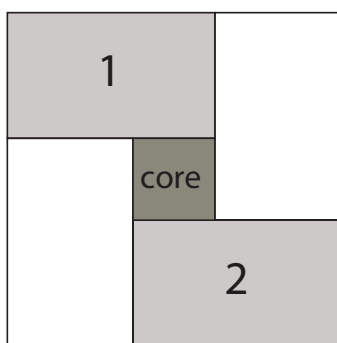
**Sitetectonix**, a landscape architecture and consulting firm with 20 years of experience, conceived the development's environment in grids, expressed throughout water, earth and green elements; with continuity in parallel with the verdant landscape.

# LE NOUVEL ARDMORE

## *Design,* OF OUR LAYOUT

Jean Nouvel challenges the convention of a residential apartment building with Le Nouvel Ardmore. He introduces the concept of an elevated bungalow. Each, with its own orientation, affords the same sense of privacy up in the air as a bungalow on the ground.

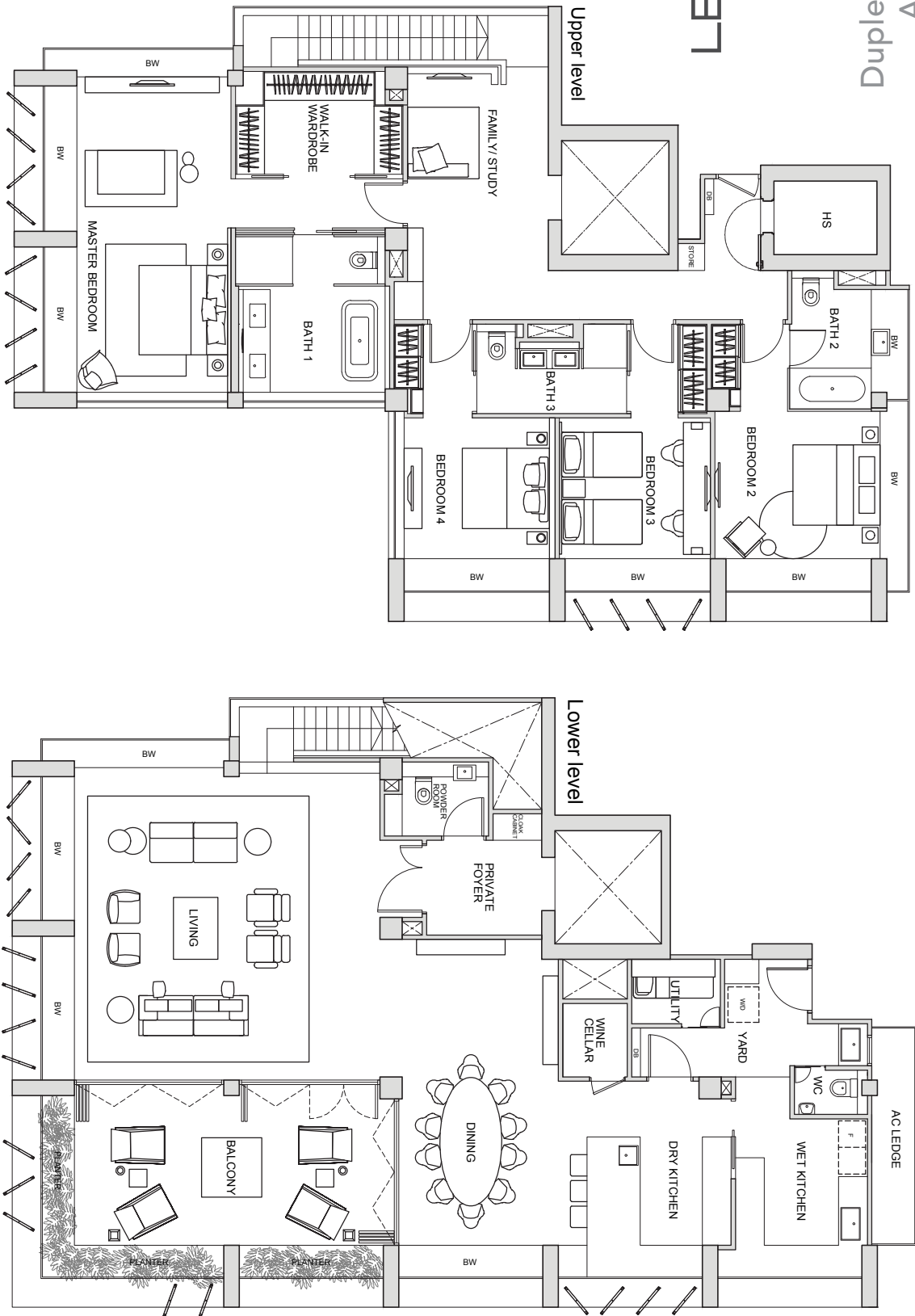
Each floor plate has an area of more than 8,000 square feet of space, and houses a maximum of 2 simplex or duplex apartments, of approximately 4,000 – 5,000 square feet each. Jean Nouvel thoughtfully designed the layout such that each apartment has four facades and opens up to its own unique views.



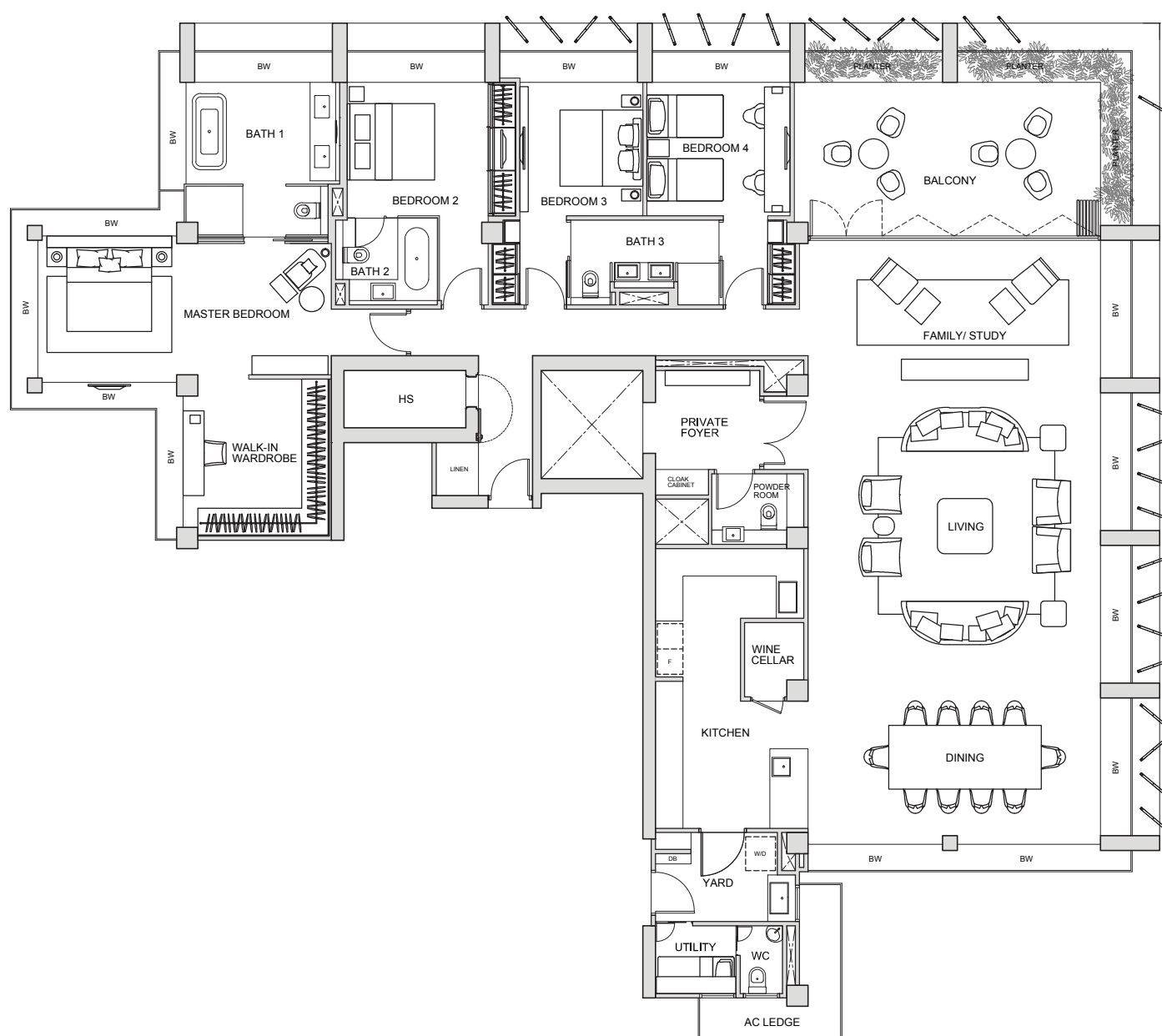
Jean Nouvel seeks to put the energy of greenery and vegetation into architecture. Pockets of greenery are infused within the building through the creation of sky garden terraces. These garden terraces are located on the 7th, 11th, 17th and 23rd storey. Apartments that are on the same level as the garden terraces can truly enjoy the sense of living in a bungalow up in the air.

# LE NOUVEL ARDMORE

Duplex Layout (TYPE V2t)  
Area: 4,058 sq ft



Duplex Layout (TYPE S4a)  
Area: 3,907 sq ft



# LE NOUVEL ARDMORE

Simplex Layout (TYPE S3t)  
Area: 4,004 sq ft

