



M A R T I N  
M O D E R N

FLOORPLANS



HOME WITHIN  
A BOTANIC GARDEN  
IN DISTRICT 9

**CONTENTS**

**LOCATION MAP**  
12 - 13

**SITEPLAN**  
14 - 15

**UNIT DISTRIBUTION**  
16 - 17

**FLOORPLANS**

2 BEDROOM  
20 - 36

3 BEDROOM  
37 - 51

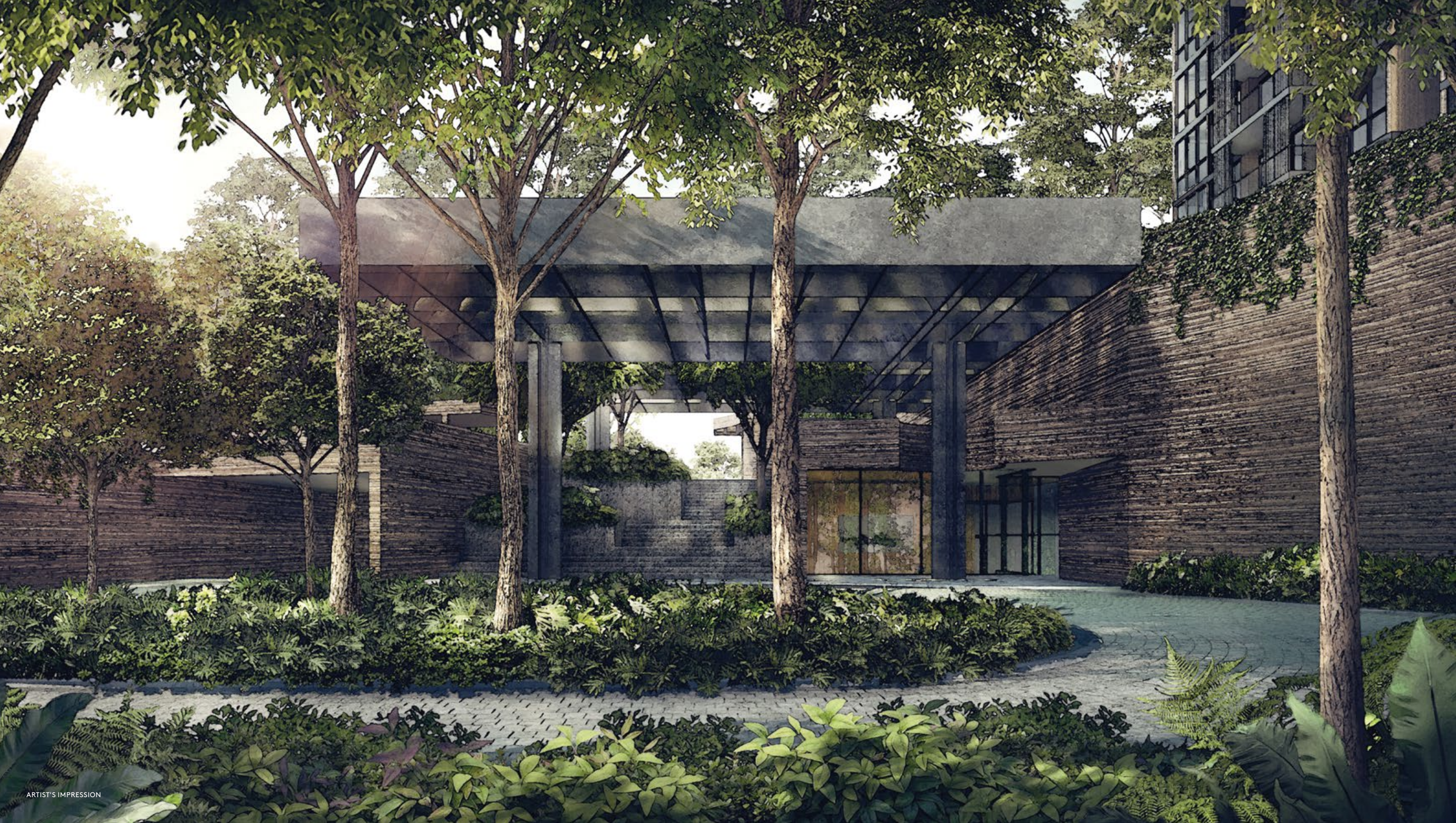
4 BEDROOM  
54 - 59

**GUOCOLAND SIGNATURE CONCIERGE SERVICES**  
60 - 61

**LUXURY FITTINGS QUALITY BRANDS**  
62 - 64

**WIRELESS SMART HOME READINESS**  
65





ARTIST'S IMPRESSION

## ARRIVAL COURT

VERDANT, INVITING,  
IMMERSE IN YOUR INNER PEACE,  
REST IN NATURE'S LAP

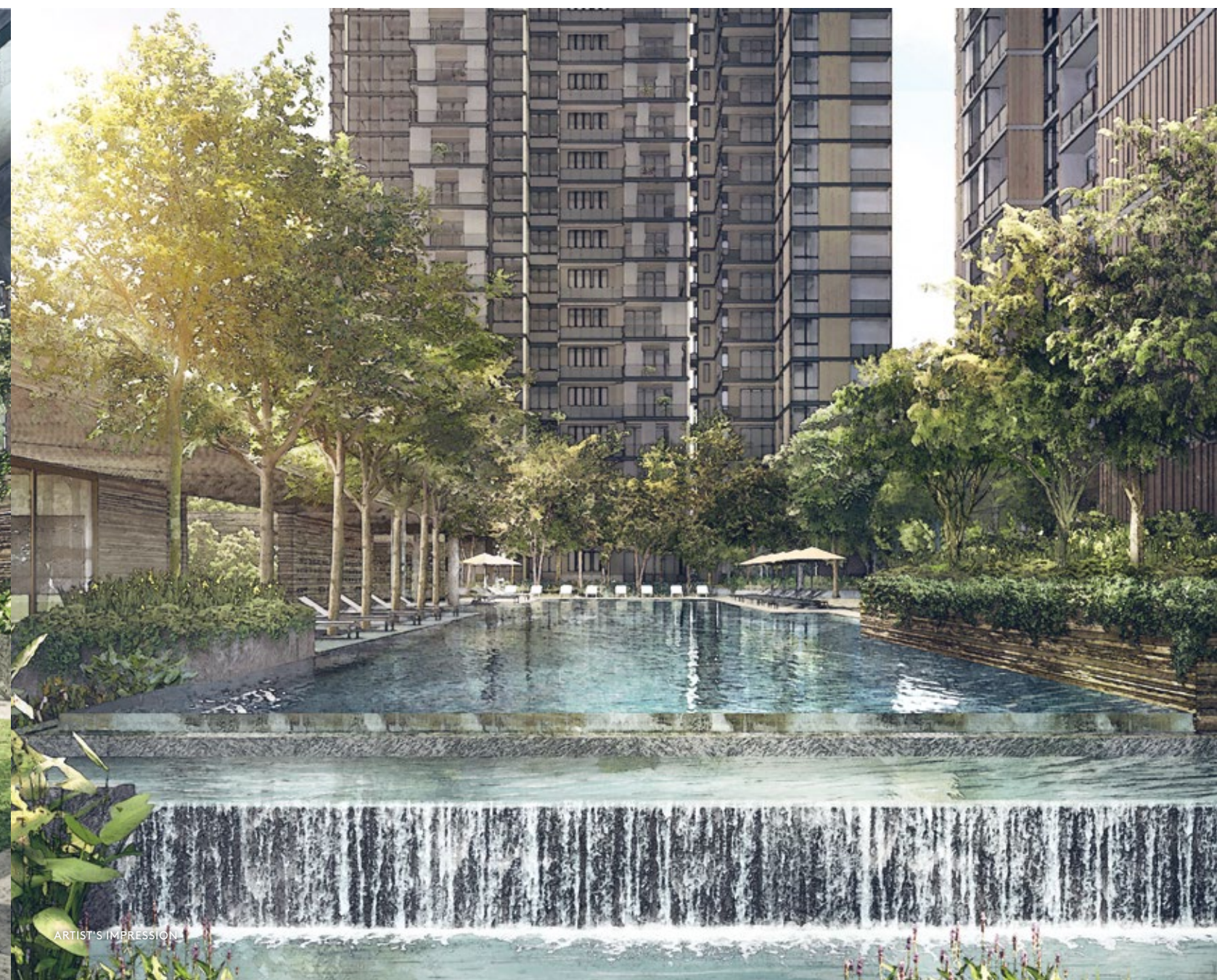




ARTIST'S IMPRESSION

#### PARTY LAWN

TREADING THE SOFT GRASS,  
IN THE HAPPY AFTERNOON,  
WELCOME YOUR GUESTS

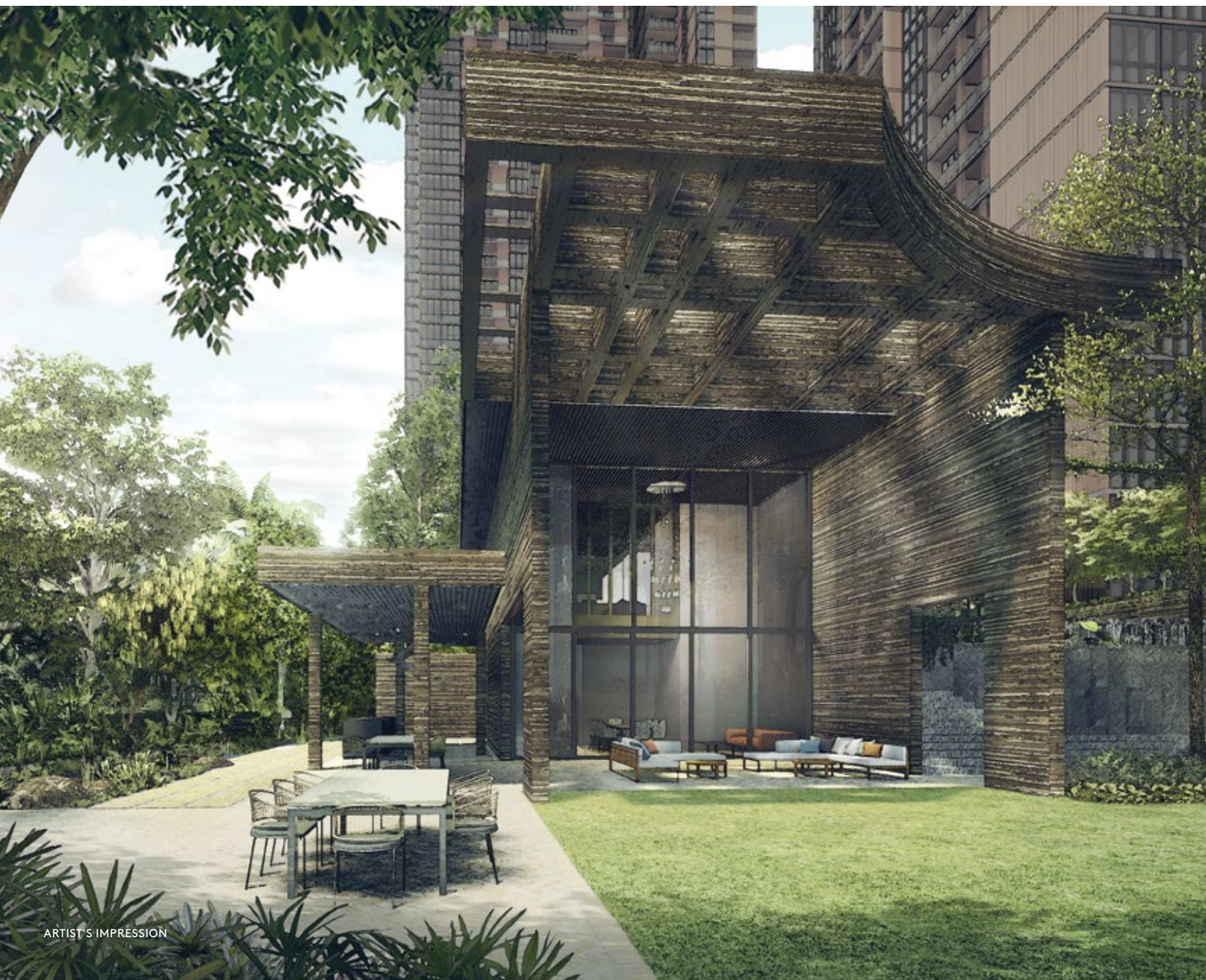


ARTIST'S IMPRESSION

#### LAP POOL

LITTLE WAVES RIPPLE,  
A SAPPHIRE POOL RINGED BY TROPICAL FOLIAGE,  
PEARL-LIKE DROPLETS SPLASH ABOUT





#### DINING LOUNGE

A HAPPY STOMACH,  
BEAUTEOUS FORMS IN VIEW, BREATHE  
PURE, FRESH AIR AS YOU DINE



#### CLUB LOUNGE

BREAKFAST WITH FRIENDS AND  
FAMILY WHILE KIDS FROLICK  
WAVING FROM THE POOL

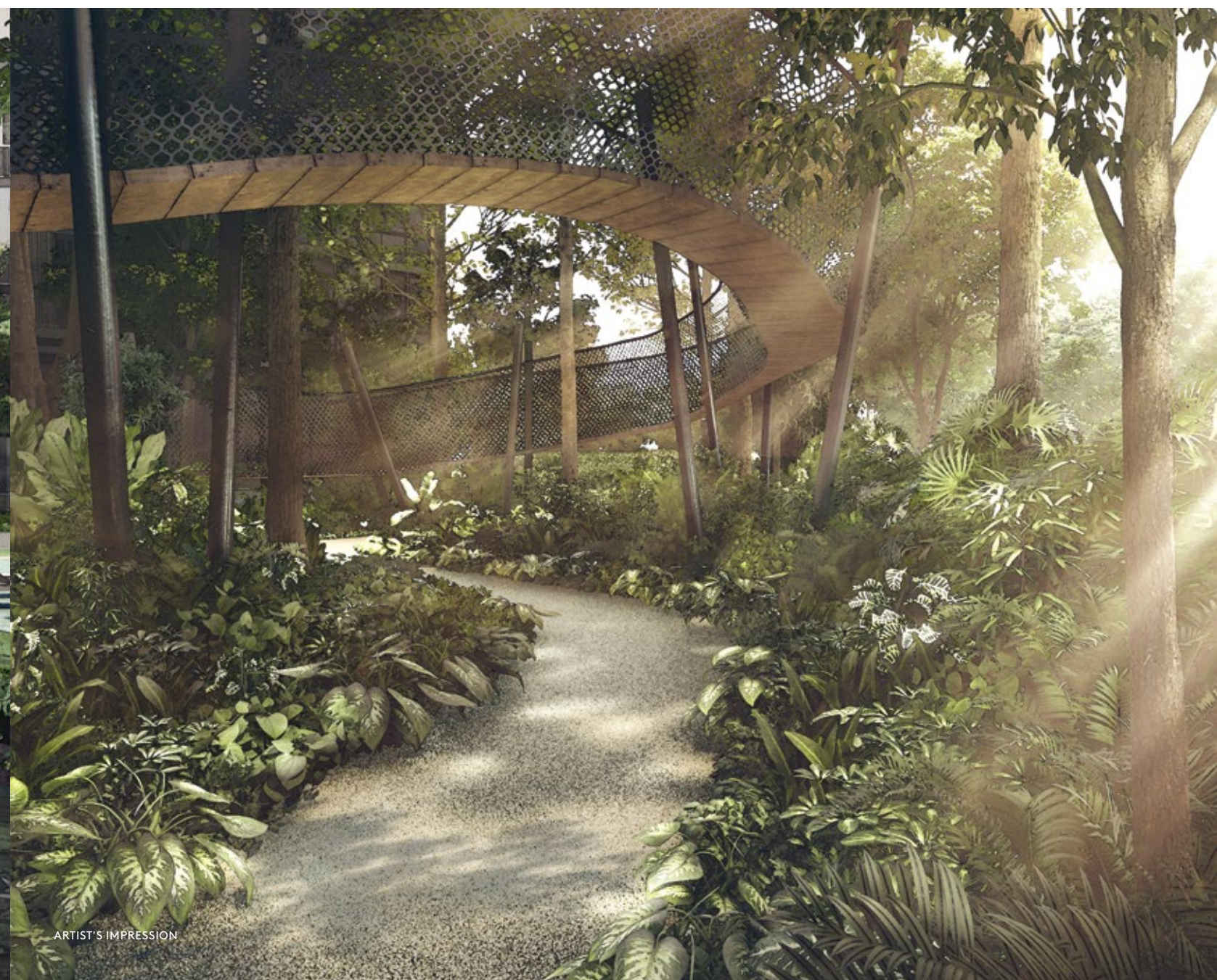




ARTIST'S IMPRESSION

#### GARDEN SPRING

BE REJUVENATED  
BY THE CALM, MEDITATIVE SPRING  
AND SMILE WITH NATURE



ARTIST'S IMPRESSION

#### FOREST TRAIL

TALL TREES AND MYSTICAL PATHS,  
THE FOREST INVITES YOU IN TO  
EMBARK ON AN ADVENTURE





ARTIST'S IMPRESSION

## CROWN

THE ICONIC TOWERS OF YOUR BEAUTIFUL ABODE  
CALL YOU INTO A WORLD WHERE YOUR MIND  
IS AT PEACE AND YOUR HEART, FULL OF JOY.





MAP IS FOR ILLUSTRATION PURPOSES ONLY AND IS NOT DRAWN TO SCALE.

AREA ZONE	
Robertson Quay	Kim Seng and Outram Precinct
Clarke Quay	Civic District
Boat Quay	Bras Basah Bugis Cultural District
Orchard Belt	Medical City
Central Business District & Marina Bay	Future Greater Southern Waterfront City
Downtown Line	Thomson East-Coast Line

MRT	
Great World MRT (U/C, via Kim Seng Park)	5 min
Somerset MRT	15 min
Fort Canning MRT (U/C)	15 min
Clarke Quay MRT	3 min
Dhoby Ghaut MRT	3 min

SHOPPING MALLS	
Great World City (via Great World MRT)	7 min
Robertson Walk	8 min
313 Somerset	18 min
Ion Orchard	4 min
The Paragon	4 min
Ngee Ann City	6 min
Plaza Singapura	6 min
Raffles City Tower	6 min
Bugis Junction	6 min
Suntec City Mall	7 min
Marina Bay Sands	7 min

MUSEUMS, GALLERIES AND THEATRES	
Theatreworks	5 min
Singapore Tyler Print Institute	6 min
Singapore Repertory Theatre	9 min
Singapore Philatelic Museum	4 min
National Gallery Singapore	4 min
Peranakan Museum	4 min
National Museum of Singapore	4 min
Singapore Art Museum	4 min
National Design Centre	5 min
Victoria Theatre & Concert Hall	6 min
Asian Civilisations Museum	6 min
Esplanade, Theatres On The Bay	8 min

WORK	
UE Square	10 min
Comcentre	13 min
Central Business District (Raffles Place)	4 min
Tanjong Pagar Centre	5 min
Marina Bay Financial Centre	6 min
The South Beach	6 min

EDUCATION	
River Valley Primary School	2 min
SOTA	4 min
ISS International School	5 min
SMU	5 min
LASALLE College of the Arts	5 min
NAFA	5 min

\* All travelling time is approximate only and is taken from Martin Modern to respective destination.

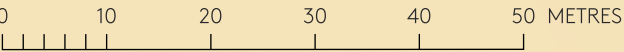


SITE PLAN

- 1 Pedestrian Entrance
- 2 Arrival Court
- 3 Reception Lounge
- 4 Lower Rain Garden
- 5 Pets' Corner
- 6 Pneumatic Refuse Room
- 7 Substation
- 8 Guard House
- 9 BBQ Pavilion 01
- 10 Party Lawn
- 11 Water Feature
- 12 Dining Lounge
- 13 BBQ Pavilion 02
- 14 Upper Rain Garden
- 15 Fitness Court 02
- 16 Tennis Court
- 17 Bamboo Grove
- 18 Club Lounge
- 19 Pool Deck
- 20 50m Lap Pool
- 21 Jacuzzi
- 22 Changing Room
- 23 Gym
- 24 Dipping Pool
- 25 Bio Pond
- 26 Garden Spring
- 27 Garden Court
- 28 Aquatic Garden
- 29 Forest Pavilion
- 30 Fitness Court 01
- 31 Forest Play
- 32 Forest Trail
- 33 Maze

ROOF GARDEN

- 34 Reading Pavilion 01
- 35 Dining Pavilion 01
- 36 Dining Pavilion 02
- 37 Reading Pavilion 02
- 38 Secret Garden 01
- 39 Secret Garden 02



ARTIST'S IMPRESSION





UNIT DISTRIBUTION

TOWER 8							
<div><div></div>2 BEDROOM<div></div>2 BEDROOM+STUDY</div>							
UNIT/ FLOOR	1	2	3	4	5	6	7
30	D2-R(PL)	C3-R	D1-R(PL)	B4S-R	B1a-R	B1a-R	C2-R
29	D2(PL)	C3	D1(PL)	B4S	B1a	B1a	C2
28	D2(PL)	C3	D1(PL)	B4S	B1a	B1a	C2
27	D2(PL)	C3	D1(PL)	B4S	B1a	B1a	C2
26	D2(PL)	C3	D1(PL)	B4S	B1a	B1a	C2
25	D2(PL)	C3	D1(PL)	B4S	B1a	B1a	C2
24	D2(PL)	C3	D1(PL)	B4S	B1a	B1a	C2
23	D2(PL)	C3	D1(PL)	B4S	B1a	B1a	C2
22	D2(PL)	C3	D1(PL)	B4S	B1a	B1a	C2
21	D2(PL)	C3	D1(PL)	B4S	B1a	B1a	C2
20	D2(PL)	C3	D1(PL)	B4S	B1a	B1a	C2
19	D2(PL)	C3	D1(PL)	B4S	B1a	B1a	C2
18	D2(PL)	C3	D1(PL)	B4S	B1a	B1a	C2
17	D2(PL)	C3	D1(PL)	B4S	B1a	B1a	C2
16	D2(PL)	C3	D1(PL)	B4S	B1a	B1a	C2
15	D2(PL)	C3	D1(PL)	B4S	B1a	B1a	C2
14	D2(PL)	C3	D1(PL)	B4S	B1a	B1a	C2
13	D2(PL)	C3	D1(PL)	B4S	B1a	B1a	C2
12	D2(PL)	C3	D1(PL)	B4S	B1a	B1a	C2
11	D2(PL)	C3	D1(PL)	B4S	B1a	B1a	C2
10	D2(PL)	C3	D1(PL)	B4S	B1a	B1a	C2
9	D2(PL)	C3	D1(PL)	B4S	B1a	B1a	C2
8	D2(PL)	C3	D1(PL)	B4S	B1a	B1a	C2
7	D2(PL)	C3	D1(PL)	B4S	B1a	B1a	C2
6	D2(PL)	C3	D1(PL)	B4S	B1a	B1a	C2
5	D2(PL)	C3	D1(PL)	B4S	B1a	B1a	C2
4	D2(PL)	C3	D1(PL)	B4S	B1a	B1a	C2
3	D2(PL)	C3	D1(PL)	B4S	B1a	B1a	C2
2	D2(PL)	C3	D1(PL)	B4S	B1a	B1a	C2
1	D2-G(PL)	C3-G	D1-G(PL)	B4S-G	B1a-G	B1a-G	C2-G
B1	BASEMENT 1 CARPARK						
B2	BASEMENT 2 CARPARK						

3 BEDROOM			3 BEDROOM PREMIUM			4 BEDROOM PREMIUM		
TOWER 10								
UNIT/ FLOOR	8	9	10	11	12	13	14	15
30	C5-R(PL)	B1-R	B1-R	B3S-R	C4-R(PL)	B2S-R	B1-R	C1-R
29	C5(PL)	B1	B1	B3S	C4(PL)	B2S	B1	C1
28	C5(PL)	B1	B1	B3S	C4(PL)	B2S	B1	C1
27	C5(PL)	B1	B1	B3S	C4(PL)	B2S	B1	C1
26	C5(PL)	B1	B1	B3S	C4(PL)	B2S	B1	C1
25	C5(PL)	B1	B1	B3S	C4(PL)	B2S	B1	C1
24	C5(PL)	B1	B1	B3S	C4(PL)	B2S	B1	C1
23	C5(PL)	B1	B1	B3S	C4(PL)	B2S	B1	C1
22	C5(PL)	B1	B1	B3S	C4(PL)	B2S	B1	C1
21	C5(PL)	B1	B1	B3S	C4(PL)	B2S	B1	C1
20	C5(PL)	B1	B1	B3S	C4(PL)	B2S	B1	C1
19	C5(PL)	B1	B1	B3S	C4(PL)	B2S	B1	C1
18	C5(PL)	B1	B1	B3S	C4(PL)	B2S	B1	C1
17	C5(PL)	B1	B1	B3S	C4(PL)	B2S	B1	C1
16	C5(PL)	B1	B1	B3S	C4(PL)	B2S	B1	C1
15	C5(PL)	B1	B1	B3S	C4(PL)	B2S	B1	C1
14	C5(PL)	B1	B1	B3S	C4(PL)	B2S	B1	C1
13	C5(PL)	B1	B1	B3S	C4(PL)	B2S	B1	C1
12	C5(PL)	B1	B1	B3S	C4(PL)	B2S	B1	C1
11	C5(PL)	B1	B1	B3S	C4(PL)	B2S	B1	C1
10	C5(PL)	B1	B1	B3S	C4(PL)	B2S	B1	C1
9	C5(PL)	B1	B1	B3S	C4(PL)	B2S	B1	C1
8	C5(PL)	B1	B1	B3S	C4(PL)	B2S	B1	C1
7	C5(PL)	B1	B1	B3S	C4(PL)	B2S	B1	C1
6	C5(PL)	B1	B1	B3S	C4(PL)	B2S	B1	C1
5	C5(PL)	B1	B1	B3S	C4(PL)	B2S	B1	C1
4	C5(PL)	B1	B1	B3S	C4(PL)	B2S	B1	C1
3	C5(PL)	B1	B1	B3S	C4(PL)	B2S	B1	C1
2	C5(PL)	B1	B1	B3S	C4(PL)	B2S	B1	C1
1	C5-G	B1-G	B1-G	B3S-G	C4-G	B2S-G	B1-G	C1-G
B1	BASEMENT 1 CARPARK							
B2	BASEMENT 2 CARPARK							





FOR ILLUSTRATION PURPOSES ONLY

FUNCTIONAL LAYOUT

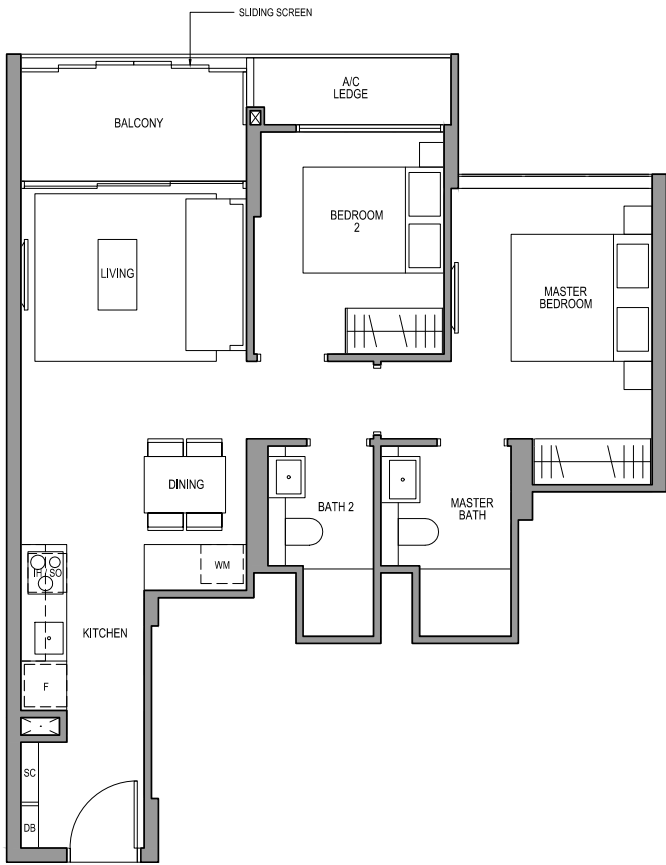


2 BEDROOM  
TYPE B1

71 SQM / 764 SQFT  
INCLUSIVE OF 6 SQM BALCONY & 3 SQM AC LEDGE

TOWER 10

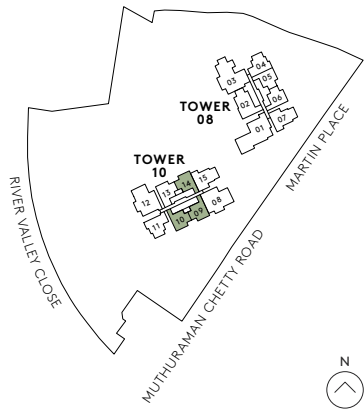
UNIT  
#02-09 TO #29-09  
#02-10\* TO #29-10\*  
#02-14\* TO #29-14\*  
\* MIRROR IMAGE



0 1M 3M 5M

F	FRIDGE	SC	SHOE CABINET	WD	WARMER DRAWER
DW	DISHWASHER	WCH	WINE CHILLER	CO	CONVENTIONAL OVEN
IH	INDUCTION HOB	WM	WASHER CUM DRYER	DB	DISTRIBUTION BOARD
GH	GAS HOB	SO	STEAM OVEN		

All plans are subjected to amendments as may be approved by the relevant authorities. Floor areas are approximate measurements and are subjected to final survey. BP approval number: A1709-00014-2016-BP01 dated: 4 May 2017.

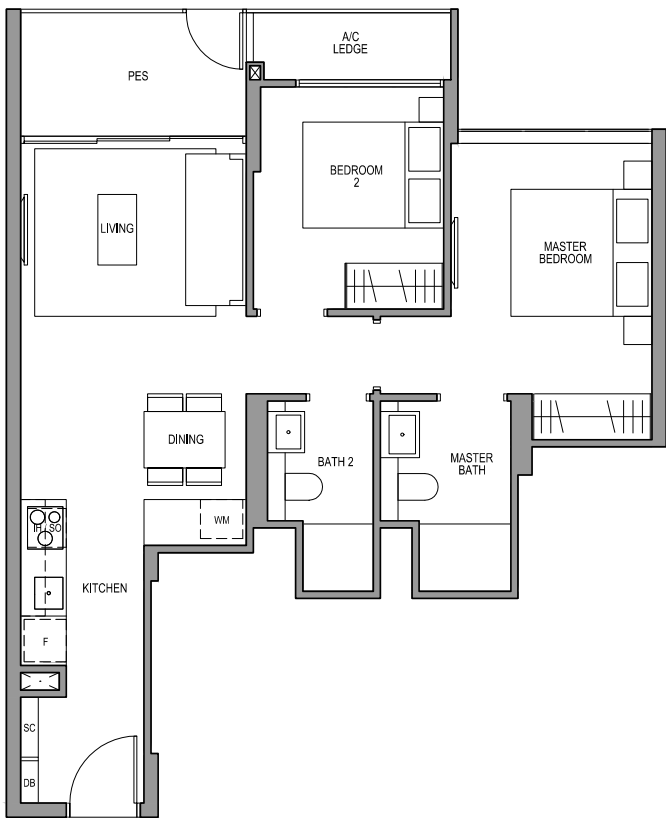


2 BEDROOM  
TYPE B1-G

71 SQM / 764 SQFT  
INCLUSIVE OF 6 SQM PES & 3 SQM AC LEDGE

TOWER 10

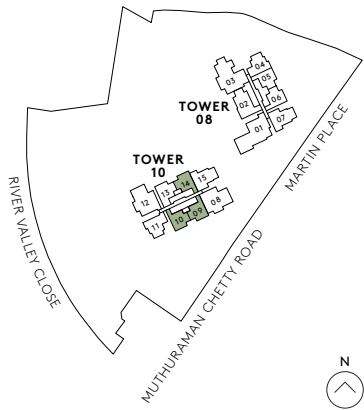
UNIT  
#01-09  
#01-10\*  
#01-14\*  
\* MIRROR IMAGE



0 1M 3M 5M

F	FRIDGE	SC	SHOE CABINET	WD	WARMER DRAWER
DW	DISHWASHER	WCH	WINE CHILLER	CO	CONVENTIONAL OVEN
IH	INDUCTION HOB	WM	WASHER CUM DRYER	DB	DISTRIBUTION BOARD
GH	GAS HOB	SO	STEAM OVEN		

All plans are subjected to amendments as may be approved by the relevant authorities. Floor areas are approximate measurements and are subjected to final survey. BP approval number: A1709-00014-2016-BP01 dated: 4 May 2017.



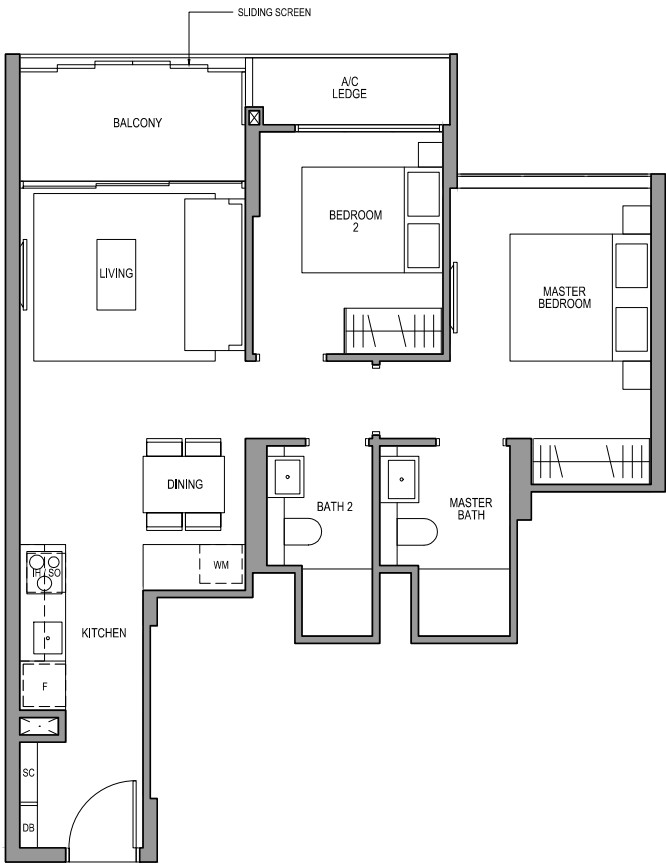


2 BEDROOM  
TYPE B1-R

71 SQM / 764 SQFT  
INCLUSIVE OF 6 SQM BALCONY & 3 SQM AC LEDGE

TOWER 10

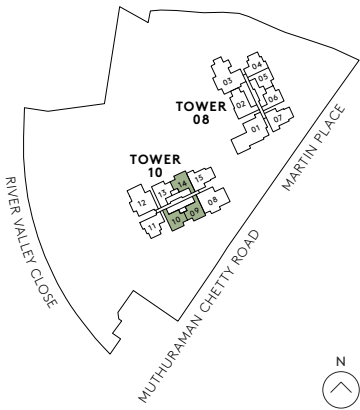
UNIT  
#30-09  
#30-10\*  
#30-14\*  
\* MIRROR IMAGE



0 1M 3M 5M

F	FRIDGE	SC	SHOE CABINET	WD	WARMER DRAWER
DW	DISHWASHER	WCH	WINE CHILLER	CO	CONVENTIONAL OVEN
IH	INDUCTION HOB	WM	WASHER CUM DRYER	DB	DISTRIBUTION BOARD
GH	GAS HOB	SO	STEAM OVEN		

All plans are subjected to amendments as may be approved by the relevant authorities. Floor areas are approximate measurements and are subjected to final survey. BP approval number: A1709-00014-2016-BP01 dated: 4 May 2017.

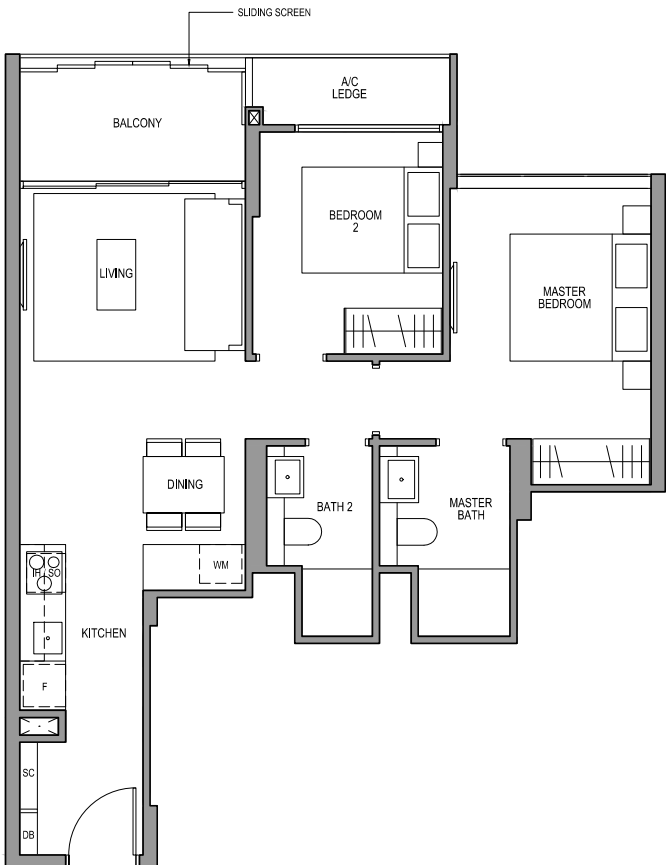


2 BEDROOM  
TYPE B1a

71 SQM / 764 SQFT  
INCLUSIVE OF 6 SQM BALCONY & 3 SQM AC LEDGE

TOWER 08

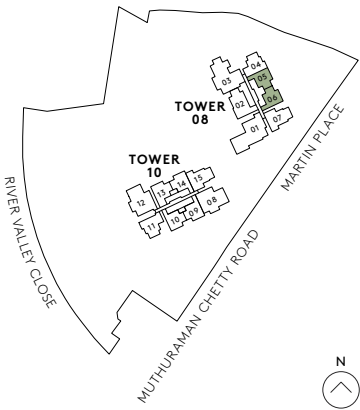
UNIT  
#02-05 TO #29-05  
#02-06\* TO #29-06\*  
\* MIRROR IMAGE



0 1M 3M 5M

F	FRIDGE	SC	SHOE CABINET	WD	WARMER DRAWER
DW	DISHWASHER	WCH	WINE CHILLER	CO	CONVENTIONAL OVEN
IH	INDUCTION HOB	WM	WASHER CUM DRYER	DB	DISTRIBUTION BOARD
GH	GAS HOB	SO	STEAM OVEN		

All plans are subjected to amendments as may be approved by the relevant authorities. Floor areas are approximate measurements and are subjected to final survey. BP approval number: A1709-00014-2016-BP01 dated: 4 May 2017.



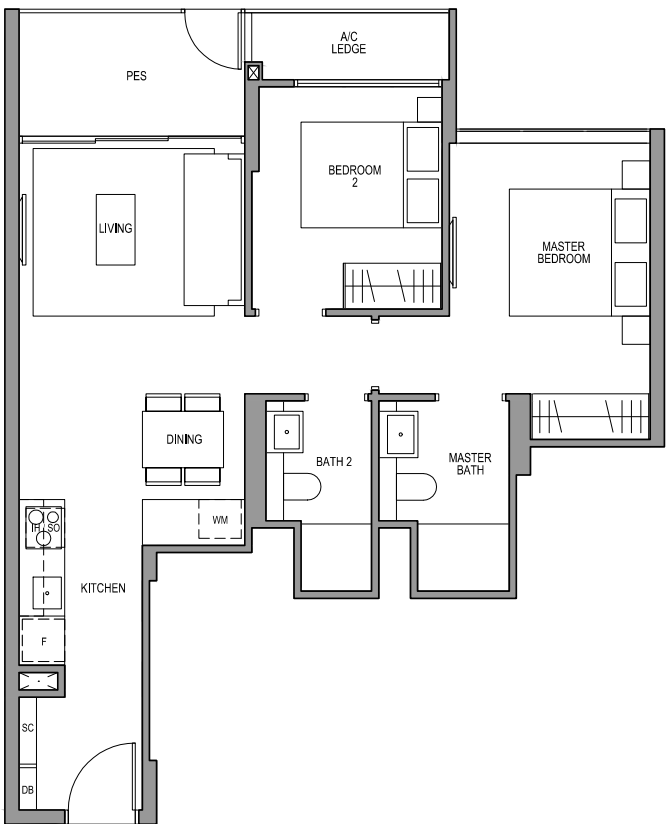


2 BEDROOM  
TYPE B1a - G

71 SQM / 764 SQFT  
INCLUSIVE OF 6 SQM PES & 3 SQM AC LEDGE

TOWER 08

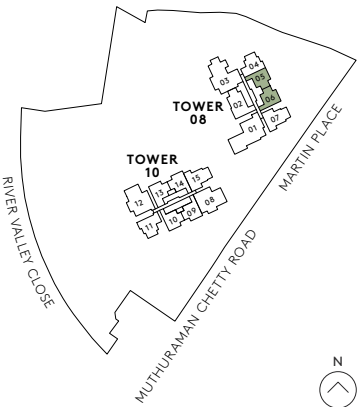
UNIT  
#01-05  
#01-06\*  
\* MIRROR IMAGE



0 1M 3M 5M

F	FRIDGE	SC	SHOE CABINET	WD	WARMER DRAWER
DW	DISHWASHER	WCH	WINE CHILLER	CO	CONVENTIONAL OVEN
IH	INDUCTION HOB	WM	WASHER CUM DRYER	DB	DISTRIBUTION BOARD
GH	GAS HOB	SO	STEAM OVEN		

All plans are subjected to amendments as may be approved by the relevant authorities. Floor areas are approximate measurements and are subjected to final survey. BP approval number: A1709-00014-2016-BP01 dated: 4 May 2017.

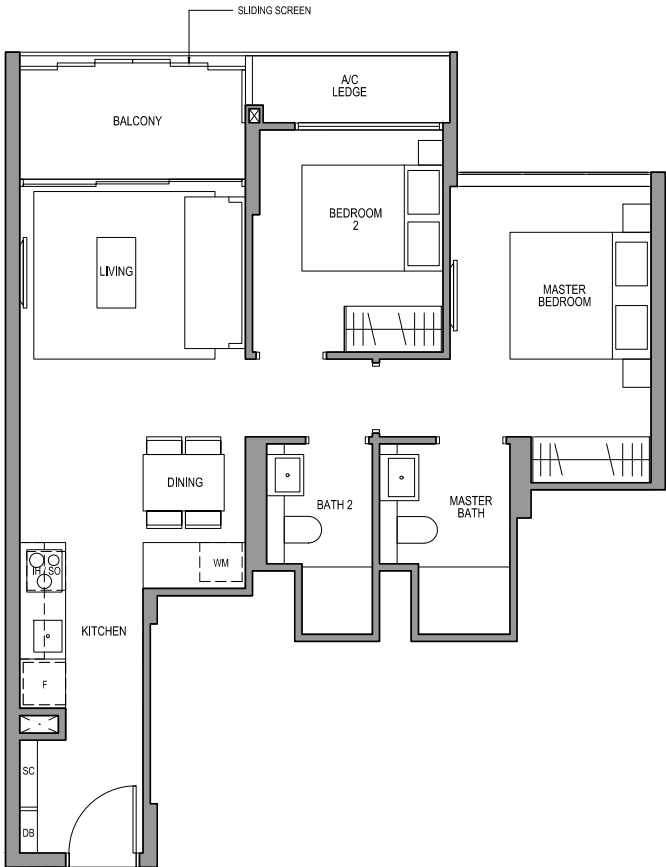


2 BEDROOM  
TYPE B1a - R

71 SQM / 764 SQFT  
INCLUSIVE OF 6 SQM BALCONY & 3 SQM AC LEDGE

TOWER 08

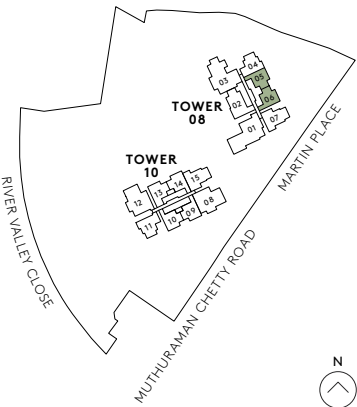
UNIT  
#30-05  
#30-06\*  
\* MIRROR IMAGE



0 1M 3M 5M

F	FRIDGE	SC	SHOE CABINET	WD	WARMER DRAWER
DW	DISHWASHER	WCH	WINE CHILLER	CO	CONVENTIONAL OVEN
IH	INDUCTION HOB	WM	WASHER CUM DRYER	DB	DISTRIBUTION BOARD
GH	GAS HOB	SO	STEAM OVEN		

All plans are subjected to amendments as may be approved by the relevant authorities. Floor areas are approximate measurements and are subjected to final survey. BP approval number: A1709-00014-2016-BP01 dated: 4 May 2017.





2 BEDROOM + STUDY  
TYPE B2S

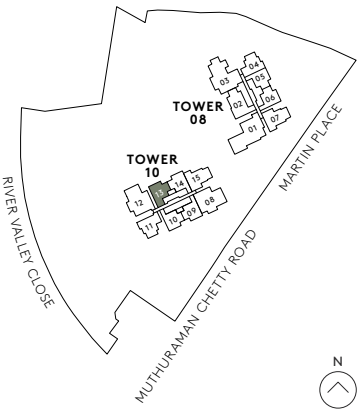
79 SQM / 850 SQFT  
INCLUSIVE OF 7 SQM BALCONY & 3 SQM AC LEDGE

TOWER 10  
UNIT  
#02-13 TO #29-13



- |    |               |     |                  |    |                    |
|----|---------------|-----|------------------|----|--------------------|
| F  | FRIDGE        | SC  | SHOE CABINET     | WD | WARMER DRAWER      |
| DW | DISHWASHER    | WCH | WINE CHILLER     | CO | CONVENTIONAL OVEN  |
| IH | INDUCTION HOB | WM  | WASHER CUM DRYER | DB | DISTRIBUTION BOARD |
| GH | GAS HOB       | SO  | STEAM OVEN       |    |                    |

All plans are subjected to amendments as may be approved by the relevant authorities. Floor areas are approximate measurements and are subjected to final survey. BP approval number: A1709-00014-2016-BP01 dated: 4 May 2017.



2 BEDROOM + STUDY  
TYPE B2S - G

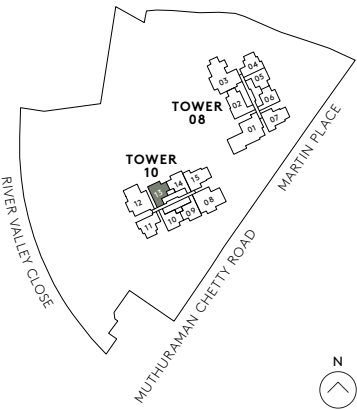
79 SQM / 850 SQFT  
INCLUSIVE OF 7 SQM PES & 3 SQM AC LEDGE

TOWER 10  
UNIT  
#01-13



- |    |               |     |                  |    |                    |
|----|---------------|-----|------------------|----|--------------------|
| F  | FRIDGE        | SC  | SHOE CABINET     | WD | WARMER DRAWER      |
| DW | DISHWASHER    | WCH | WINE CHILLER     | CO | CONVENTIONAL OVEN  |
| IH | INDUCTION HOB | WM  | WASHER CUM DRYER | DB | DISTRIBUTION BOARD |
| GH | GAS HOB       | SO  | STEAM OVEN       |    |                    |

All plans are subjected to amendments as may be approved by the relevant authorities. Floor areas are approximate measurements and are subjected to final survey. BP approval number: A1709-00014-2016-BP01 dated: 4 May 2017.





2 BEDROOM + STUDY  
TYPE B2S-R

79 SQM / 850 SQFT  
INCLUSIVE OF 7 SQM BALCONY & 3 SQM AC LEDGE

TOWER 10

UNIT

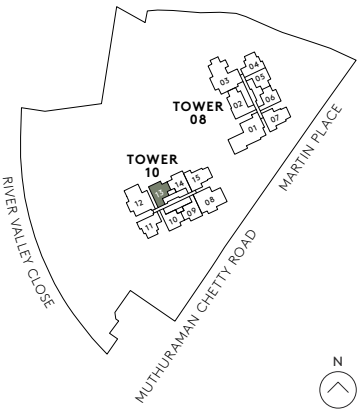
#30-13



0 1M 3M 5M

F	FRIDGE	SC	SHOE CABINET	WD	WARMER DRAWER
DW	DISHWASHER	WCH	WINE CHILLER	CO	CONVENTIONAL OVEN
IH	INDUCTION HOB	WM	WASHER CUM DRYER	DB	DISTRIBUTION BOARD
GH	GAS HOB	SO	STEAM OVEN		

All plans are subjected to amendments as may be approved by the relevant authorities. Floor areas are approximate measurements and are subjected to final survey. BP approval number: A1709-00014-2016-BP01 dated: 4 May 2017.



2 BEDROOM + STUDY  
TYPE B3S

82 SQM / 883 SQFT  
INCLUSIVE OF 6 SQM BALCONY & 5 SQM AC LEDGE

TOWER 10

UNIT

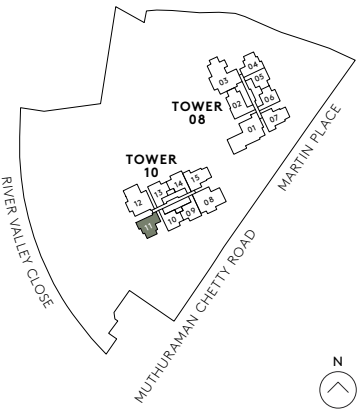
#02-11 to #29-11



0 1M 3M 5M

F	FRIDGE	SC	SHOE CABINET	WD	WARMER DRAWER
DW	DISHWASHER	WCH	WINE CHILLER	CO	CONVENTIONAL OVEN
IH	INDUCTION HOB	WM	WASHER CUM DRYER	DB	DISTRIBUTION BOARD
GH	GAS HOB	SO	STEAM OVEN		

All plans are subjected to amendments as may be approved by the relevant authorities. Floor areas are approximate measurements and are subjected to final survey. BP approval number: A1709-00014-2016-BP01 dated: 4 May 2017.





2 BEDROOM + STUDY  
TYPE B3S-G

82 SQM / 883 SQFT  
INCLUSIVE OF 6 SQM PES & 5 SQM AC LEDGE

TOWER 10

UNIT

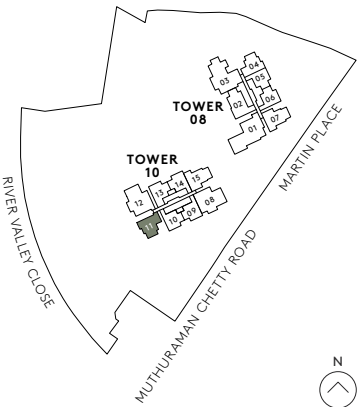
#01-11



0 1M 3M 5M

- |    |               |     |                  |    |                    |
|----|---------------|-----|------------------|----|--------------------|
| F  | FRIDGE        | SC  | SHOE CABINET     | WD | WARMER DRAWER      |
| DW | DISHWASHER    | WCH | WINE CHILLER     | CO | CONVENTIONAL OVEN  |
| IH | INDUCTION HOB | WM  | WASHER CUM DRYER | DB | DISTRIBUTION BOARD |
| GH | GAS HOB       | SO  | STEAM OVEN       |    |                    |

All plans are subjected to amendments as may be approved by the relevant authorities. Floor areas are approximate measurements and are subjected to final survey. BP approval number: A1709-00014-2016-BP01 dated: 4 May 2017.



2 BEDROOM + STUDY  
TYPE B3S-R

82 SQM / 883 SQFT  
INCLUSIVE OF 6 SQM BALCONY & 5 SQM AC LEDGE

TOWER 10

UNIT

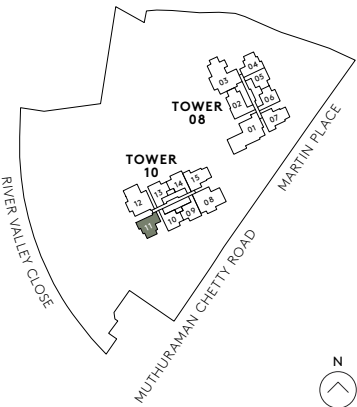
#30-11



0 1M 3M 5M

- |    |               |     |                  |    |                    |
|----|---------------|-----|------------------|----|--------------------|
| F  | FRIDGE        | SC  | SHOE CABINET     | WD | WARMER DRAWER      |
| DW | DISHWASHER    | WCH | WINE CHILLER     | CO | CONVENTIONAL OVEN  |
| IH | INDUCTION HOB | WM  | WASHER CUM DRYER | DB | DISTRIBUTION BOARD |
| GH | GAS HOB       | SO  | STEAM OVEN       |    |                    |

All plans are subjected to amendments as may be approved by the relevant authorities. Floor areas are approximate measurements and are subjected to final survey. BP approval number: A1709-00014-2016-BP01 dated: 4 May 2017.



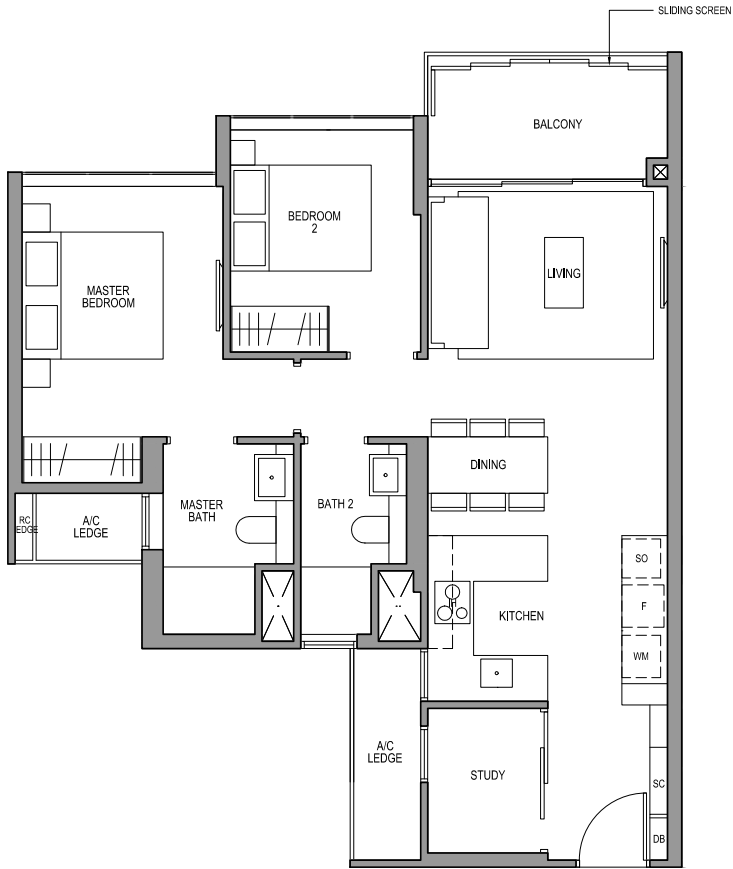


2 BEDROOM + STUDY  
TYPE B4S

81 SQM / 872 SQFT  
INCLUSIVE OF 6 SQM BALCONY & 5 SQM AC LEDGE

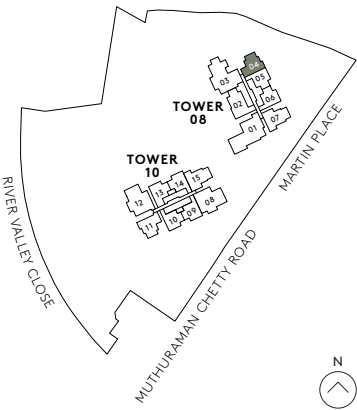
TOWER 08

UNIT  
#02-04 TO #29-04



- |    |               |     |                  |    |                    |
|----|---------------|-----|------------------|----|--------------------|
| F  | FRIDGE        | SC  | SHOE CABINET     | WD | WARMER DRAWER      |
| DW | DISHWASHER    | WCH | WINE CHILLER     | CO | CONVENTIONAL OVEN  |
| IH | INDUCTION HOB | WM  | WASHER CUM DRYER | DB | DISTRIBUTION BOARD |
| GH | GAS HOB       | SO  | STEAM OVEN       |    |                    |

All plans are subjected to amendments as may be approved by the relevant authorities. Floor areas are approximate measurements and are subjected to final survey. BP approval number: A1709-00014-2016-BP01 dated: 4 May 2017.



2 BEDROOM + STUDY  
TYPE B4S-G

81 SQM / 872 SQFT  
INCLUSIVE OF 6 SQM PES & 5 SQM AC LEDGE

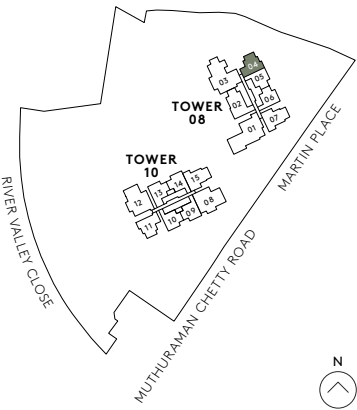
TOWER 08

UNIT  
#01-04



- |    |               |     |                  |    |                    |
|----|---------------|-----|------------------|----|--------------------|
| F  | FRIDGE        | SC  | SHOE CABINET     | WD | WARMER DRAWER      |
| DW | DISHWASHER    | WCH | WINE CHILLER     | CO | CONVENTIONAL OVEN  |
| IH | INDUCTION HOB | WM  | WASHER CUM DRYER | DB | DISTRIBUTION BOARD |
| GH | GAS HOB       | SO  | STEAM OVEN       |    |                    |

All plans are subjected to amendments as may be approved by the relevant authorities. Floor areas are approximate measurements and are subjected to final survey. BP approval number: A1709-00014-2016-BP01 dated: 4 May 2017.







FOR ILLUSTRATION PURPOSES ONLY

LUXURIOUS LIVING SPACES



2 BEDROOM + STUDY  
TYPE B4S-R

81 SQM / 872 SQFT  
INCLUSIVE OF 6 SQM BALCONY & 5 SQM AC LEDGE

TOWER 08

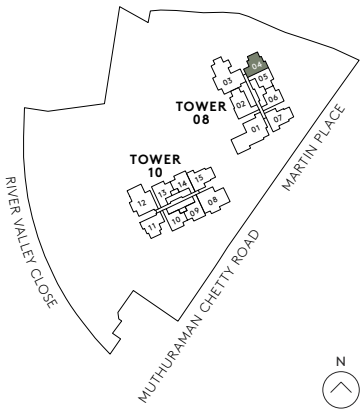
UNIT

#30-04



- |    |               |     |                  |    |                    |
|----|---------------|-----|------------------|----|--------------------|
| F  | FRIDGE        | SC  | SHOE CABINET     | WD | WARMER DRAWER      |
| DW | DISHWASHER    | WCH | WINE CHILLER     | CO | CONVENTIONAL OVEN  |
| IH | INDUCTION HOB | WM  | WASHER CUM DRYER | DB | DISTRIBUTION BOARD |
| GH | GAS HOB       | SO  | STEAM OVEN       |    |                    |

All plans are subjected to amendments as may be approved by the relevant authorities. Floor areas are approximate measurements and are subjected to final survey. BP approval number: A1709-00014-2016-BP01 dated: 4 May 2017.



3 BEDROOM  
TYPE C1

94 SQM / 1012 SQFT  
INCLUSIVE OF 7 SQM BALCONY & 5 SQM AC LEDGE

TOWER 10

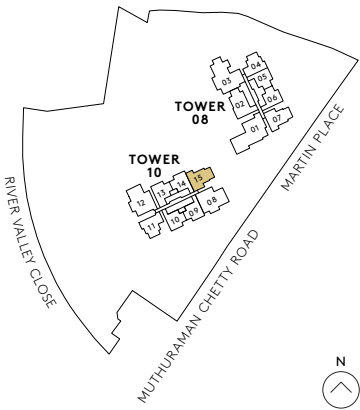
UNIT

#02-15 TO #29-15



- |    |               |     |                  |    |                    |
|----|---------------|-----|------------------|----|--------------------|
| F  | FRIDGE        | SC  | SHOE CABINET     | WD | WARMER DRAWER      |
| DW | DISHWASHER    | WCH | WINE CHILLER     | CO | CONVENTIONAL OVEN  |
| IH | INDUCTION HOB | WM  | WASHER CUM DRYER | DB | DISTRIBUTION BOARD |
| GH | GAS HOB       | SO  | STEAM OVEN       |    |                    |

All plans are subjected to amendments as may be approved by the relevant authorities. Floor areas are approximate measurements and are subjected to final survey. BP approval number: A1709-00014-2016-BP01 dated: 4 May 2017.





3 BEDROOM  
TYPE C1-G

94 SQM / 1012 SQFT  
INCLUSIVE OF 7 SQM PES & 5 SQM AC LEDGE

TOWER 10

UNIT

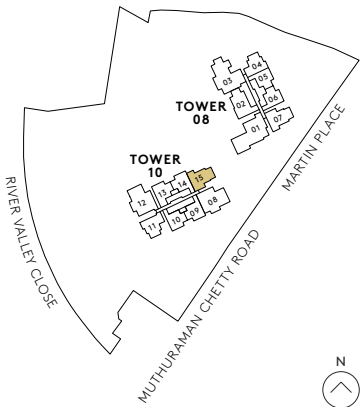
#01-15



0 1M 3M 5M

F	FRIDGE	SC	SHOE CABINET	WD	WARMER DRAWER
DW	DISHWASHER	WCH	WINE CHILLER	CO	CONVENTIONAL OVEN
IH	INDUCTION HOB	WM	WASHER CUM DRYER	DB	DISTRIBUTION BOARD
GH	GAS HOB	SO	STEAM OVEN		

All plans are subjected to amendments as may be approved by the relevant authorities. Floor areas are approximate measurements and are subjected to final survey. BP approval number: A1709-00014-2016-BP01 dated: 4 May 2017.



3 BEDROOM  
TYPE C1-R

94 SQM / 1012 SQFT  
INCLUSIVE OF 7 SQM BALCONY & 5 SQM AC LEDGE

TOWER 10

UNIT

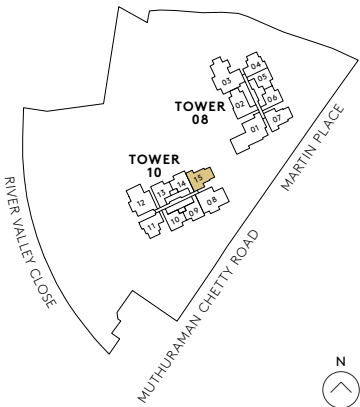
#30-15



0 1M 3M 5M

F	FRIDGE	SC	SHOE CABINET	WD	WARMER DRAWER
DW	DISHWASHER	WCH	WINE CHILLER	CO	CONVENTIONAL OVEN
IH	INDUCTION HOB	WM	WASHER CUM DRYER	DB	DISTRIBUTION BOARD
GH	GAS HOB	SO	STEAM OVEN		

All plans are subjected to amendments as may be approved by the relevant authorities. Floor areas are approximate measurements and are subjected to final survey. BP approval number: A1709-00014-2016-BP01 dated: 4 May 2017.



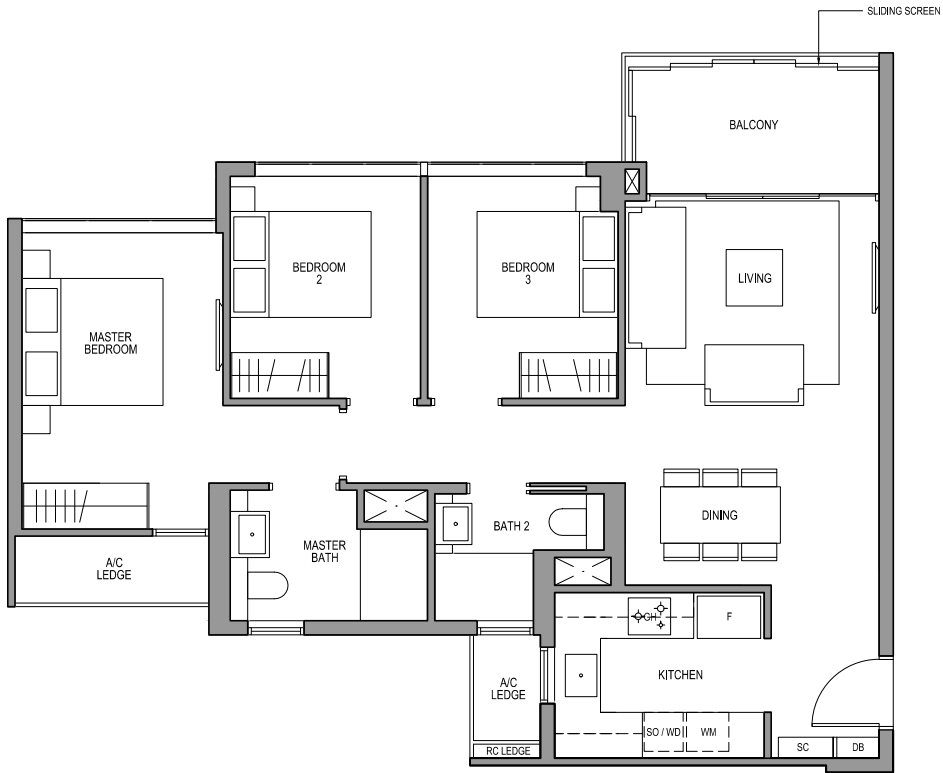


3 BEDROOM  
TYPE C 2

94 SQM / 1012 SQFT  
INCLUSIVE OF 7 SQM BALCONY & 5 SQM AC LEDGE

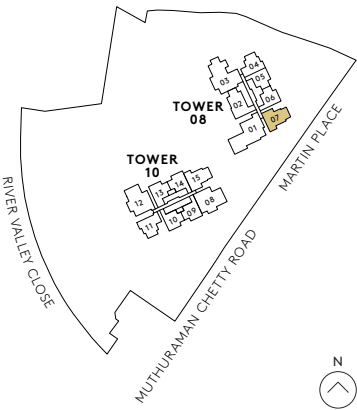
TOWER 08

UNIT  
#02-07 TO #29-07



- |    |               |     |                  |    |                    |
|----|---------------|-----|------------------|----|--------------------|
| F  | FRIDGE        | SC  | SHOE CABINET     | WD | WARMER DRAWER      |
| DW | DISHWASHER    | WCH | WINE CHILLER     | CO | CONVENTIONAL OVEN  |
| IH | INDUCTION HOB | WM  | WASHER CUM DRYER | DB | DISTRIBUTION BOARD |
| GH | GAS HOB       | SO  | STEAM OVEN       |    |                    |

All plans are subjected to amendments as may be approved by the relevant authorities. Floor areas are approximate measurements and are subjected to final survey. BP approval number: A1709-00014-2016-BP01 dated: 4 May 2017.



3 BEDROOM  
TYPE C 2 - G

94 SQM / 1012 SQFT  
INCLUSIVE OF 7 SQM PES & 5 SQM AC LEDGE

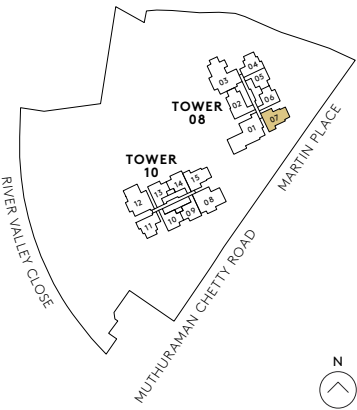
TOWER 08

UNIT  
#01-07



- |    |               |     |                  |    |                    |
|----|---------------|-----|------------------|----|--------------------|
| F  | FRIDGE        | SC  | SHOE CABINET     | WD | WARMER DRAWER      |
| DW | DISHWASHER    | WCH | WINE CHILLER     | CO | CONVENTIONAL OVEN  |
| IH | INDUCTION HOB | WM  | WASHER CUM DRYER | DB | DISTRIBUTION BOARD |
| GH | GAS HOB       | SO  | STEAM OVEN       |    |                    |

All plans are subjected to amendments as may be approved by the relevant authorities. Floor areas are approximate measurements and are subjected to final survey. BP approval number: A1709-00014-2016-BP01 dated: 4 May 2017.





3 BEDROOM  
TYPE C2-R

94 SQM / 1012 SQFT  
INCLUSIVE OF 7 SQM BALCONY & 5 SQM AC LEDGE

TOWER 08

UNIT

#30-07



0 1M 3M 5M

F	FRIDGE	SC	SHOE CABINET	WD	WARMER DRAWER
DW	DISHWASHER	WCH	WINE CHILLER	CO	CONVENTIONAL OVEN
IH	INDUCTION HOB	WM	WASHER CUM DRYER	DB	DISTRIBUTION BOARD
GH	GAS HOB	SO	STEAM OVEN		

All plans are subjected to amendments as may be approved by the relevant authorities. Floor areas are approximate measurements and are subjected to final survey. BP approval number: A1709-00014-2016-BP01 dated: 4 May 2017.

3 BEDROOM  
TYPE C3

101 SQM / 1087 SQFT  
INCLUSIVE OF 12 SQM BALCONY & 5 SQM AC LEDGE

TOWER 08

UNIT

#02-02 TO #29-02



0 1M 3M 5M

F	FRIDGE	SC	SHOE CABINET	WD	WARMER DRAWER
DW	DISHWASHER	WCH	WINE CHILLER	CO	CONVENTIONAL OVEN
IH	INDUCTION HOB	WM	WASHER CUM DRYER	DB	DISTRIBUTION BOARD
GH	GAS HOB	SO	STEAM OVEN		

All plans are subjected to amendments as may be approved by the relevant authorities. Floor areas are approximate measurements and are subjected to final survey. BP approval number: A1709-00014-2016-BP01 dated: 4 May 2017.



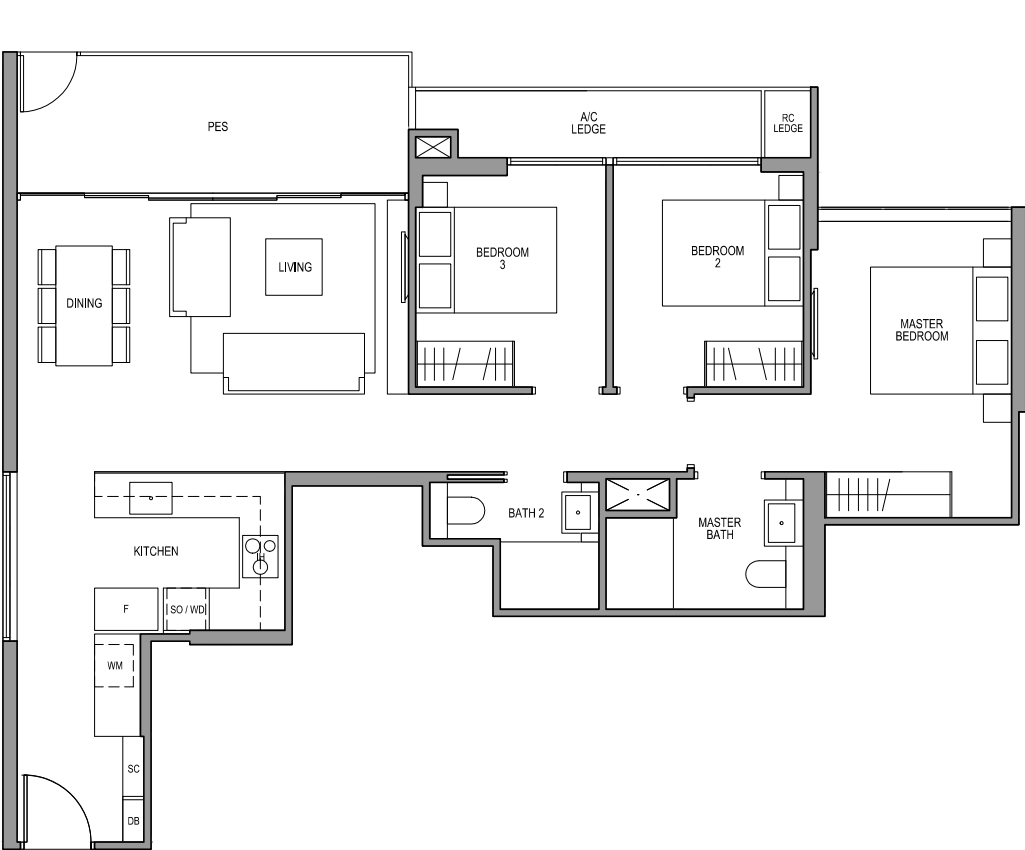
3 BEDROOM  
TYPE C3-G

101 SQM / 1087 SQFT  
INCLUSIVE OF 12 SQM PES & 5 SQM AC LEDGE

TOWER 08

UNIT

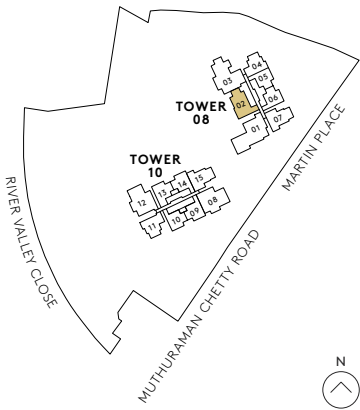
#01-02



0 1M 3M 5M

- |    |               |     |                  |    |                    |
|----|---------------|-----|------------------|----|--------------------|
| F  | FRIDGE        | SC  | SHOE CABINET     | WD | WARMER DRAWER      |
| DW | DISHWASHER    | WCH | WINE CHILLER     | CO | CONVENTIONAL OVEN  |
| IH | INDUCTION HOB | WM  | WASHER CUM DRYER | DB | DISTRIBUTION BOARD |
| GH | GAS HOB       | SO  | STEAM OVEN       |    |                    |

All plans are subjected to amendments as may be approved by the relevant authorities. Floor areas are approximate measurements and are subjected to final survey. BP approval number: A1709-00014-2016-BP01 dated: 4 May 2017.



3 BEDROOM  
TYPE C3-R

101 SQM / 1087 SQFT  
INCLUSIVE OF 12 SQM BALCONY & 5 SQM AC LEDGE

TOWER 08

UNIT

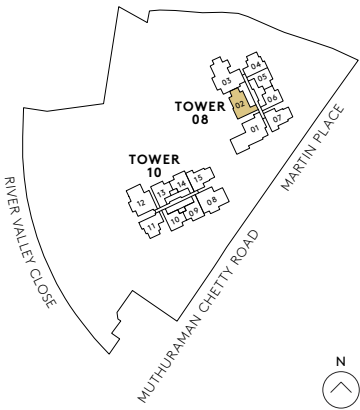
#30-02



0 1M 3M 5M

- |    |               |     |                  |    |                    |
|----|---------------|-----|------------------|----|--------------------|
| F  | FRIDGE        | SC  | SHOE CABINET     | WD | WARMER DRAWER      |
| DW | DISHWASHER    | WCH | WINE CHILLER     | CO | CONVENTIONAL OVEN  |
| IH | INDUCTION HOB | WM  | WASHER CUM DRYER | DB | DISTRIBUTION BOARD |
| GH | GAS HOB       | SO  | STEAM OVEN       |    |                    |

All plans are subjected to amendments as may be approved by the relevant authorities. Floor areas are approximate measurements and are subjected to final survey. BP approval number: A1709-00014-2016-BP01 dated: 4 May 2017.

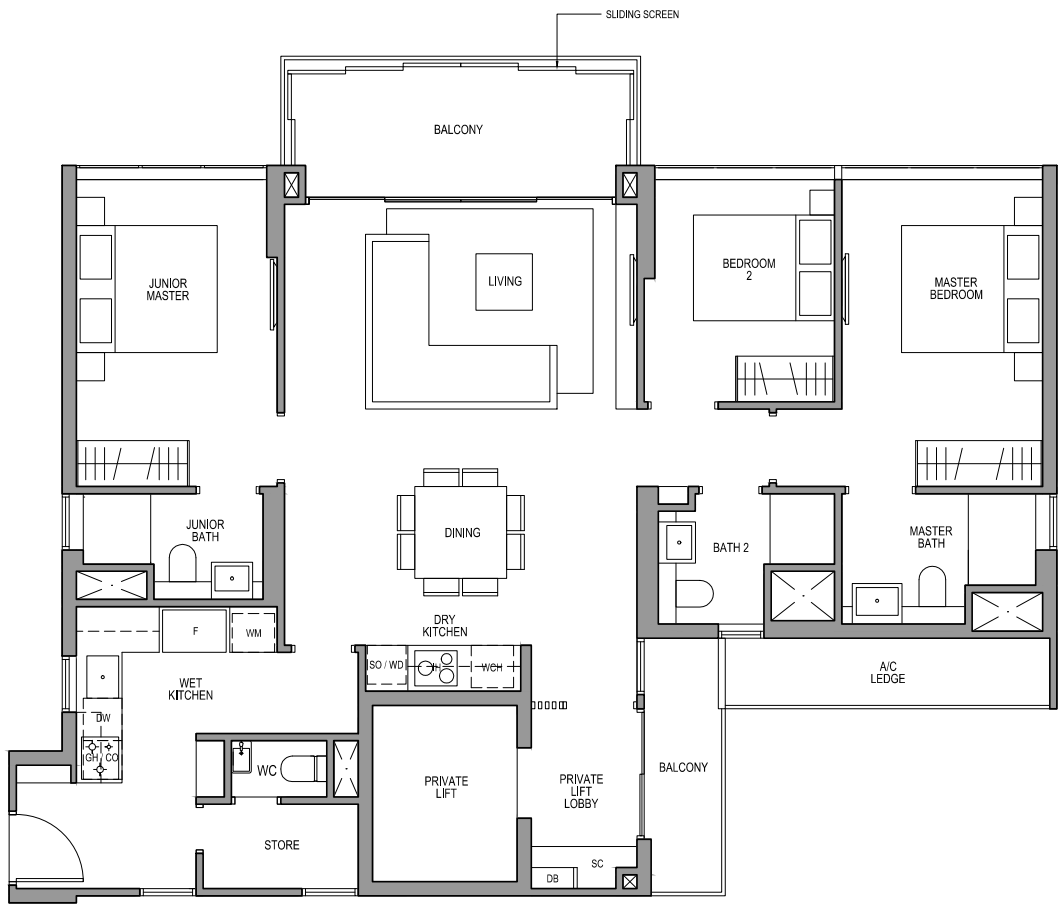




3 BEDROOM PREMIUM  
TYPE C4(PL)

132 SQM / 1421 SQFT  
INCLUSIVE OF 14 SQM BALCONY & 5 SQM AC LEDGE

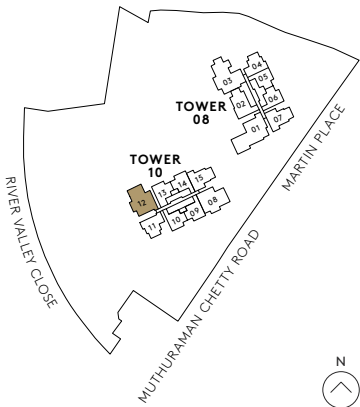
TOWER 10  
UNIT  
#02-12 TO #29-12



0 1M 3M 5M

- |    |               |     |                  |    |                    |
|----|---------------|-----|------------------|----|--------------------|
| F  | FRIDGE        | SC  | SHOE CABINET     | WD | WARMER DRAWER      |
| DW | DISHWASHER    | WCH | WINE CHILLER     | CO | CONVENTIONAL OVEN  |
| IH | INDUCTION HOB | WM  | WASHER CUM DRYER | DB | DISTRIBUTION BOARD |
| GH | GAS HOB       | SO  | STEAM OVEN       |    |                    |

All plans are subjected to amendments as may be approved by the relevant authorities. Floor areas are approximate measurements and are subjected to final survey. BP approval number: A1709-00014-2016-BP01 dated: 4 May 2017.



3 BEDROOM PREMIUM  
TYPE C4-G

124 SQM / 1335 SQFT  
INCLUSIVE OF 10 SQM PES & 6 SQM AC LEDGE

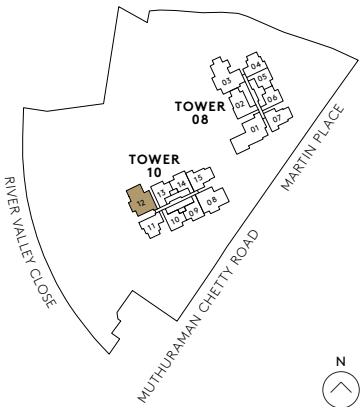
TOWER 10  
UNIT  
#01-12



0 1M 3M 5M

- |    |               |     |                  |    |                    |
|----|---------------|-----|------------------|----|--------------------|
| F  | FRIDGE        | SC  | SHOE CABINET     | WD | WARMER DRAWER      |
| DW | DISHWASHER    | WCH | WINE CHILLER     | CO | CONVENTIONAL OVEN  |
| IH | INDUCTION HOB | WM  | WASHER CUM DRYER | DB | DISTRIBUTION BOARD |
| GH | GAS HOB       | SO  | STEAM OVEN       |    |                    |

All plans are subjected to amendments as may be approved by the relevant authorities. Floor areas are approximate measurements and are subjected to final survey. BP approval number: A1709-00014-2016-BP01 dated: 4 May 2017.





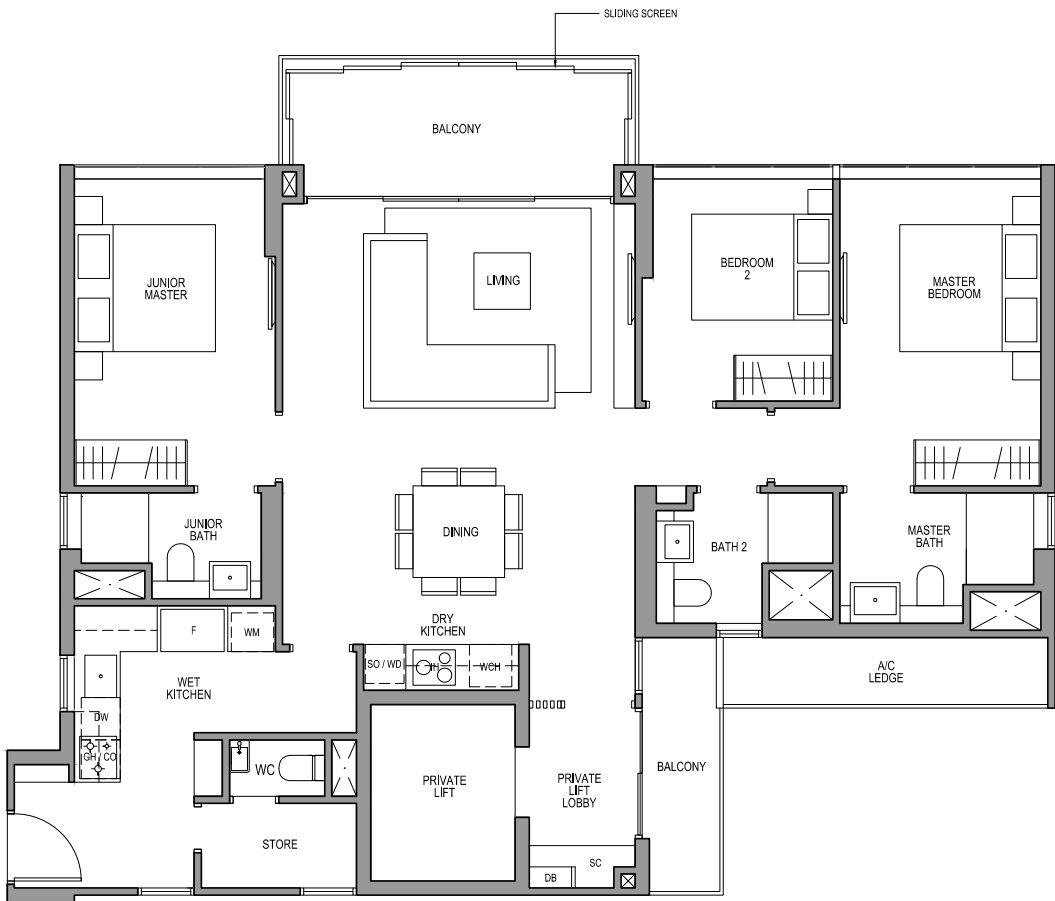
3 BEDROOM PREMIUM  
TYPE C4-R(PL)

132 SQM / 1421 SQFT  
INCLUSIVE OF 14 SQM BALCONY & 5 SQM AC LEDGE

TOWER 10

UNIT

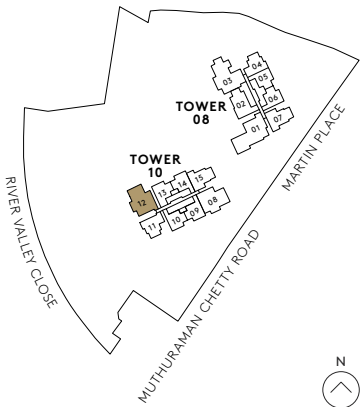
#30-12



0 1M 3M 5M

- |    |               |     |                  |    |                    |
|----|---------------|-----|------------------|----|--------------------|
| F  | FRIDGE        | SC  | SHOE CABINET     | WD | WARMER DRAWER      |
| DW | DISHWASHER    | WCH | WINE CHILLER     | CO | CONVENTIONAL OVEN  |
| IH | INDUCTION HOB | WM  | WASHER CUM DRYER | DB | DISTRIBUTION BOARD |
| GH | GAS HOB       | SO  | STEAM OVEN       |    |                    |

All plans are subjected to amendments as may be approved by the relevant authorities. Floor areas are approximate measurements and are subjected to final survey. BP approval number: A1709-00014-2016-BP01 dated: 4 May 2017.



3 BEDROOM PREMIUM  
TYPE C5(PL)

130 SQM / 1399 SQFT  
INCLUSIVE OF 14 SQM BALCONY & 5 SQM AC LEDGE

TOWER 10

UNIT

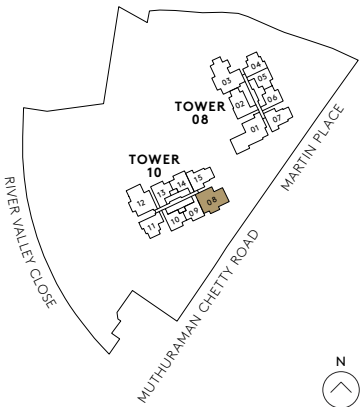
#02-08 TO #29-08



0 1M 3M 5M

- |    |               |     |                  |    |                    |
|----|---------------|-----|------------------|----|--------------------|
| F  | FRIDGE        | SC  | SHOE CABINET     | WD | WARMER DRAWER      |
| DW | DISHWASHER    | WCH | WINE CHILLER     | CO | CONVENTIONAL OVEN  |
| IH | INDUCTION HOB | WM  | WASHER CUM DRYER | DB | DISTRIBUTION BOARD |
| GH | GAS HOB       | SO  | STEAM OVEN       |    |                    |

All plans are subjected to amendments as may be approved by the relevant authorities. Floor areas are approximate measurements and are subjected to final survey. BP approval number: A1709-00014-2016-BP01 dated: 4 May 2017.





3 BEDROOM PREMIUM  
TYPE C5-G

123 SQM / 1324 SQFT  
INCLUSIVE OF 10 SQM PES & 6 SQM AC LEDGE

TOWER 10

UNIT

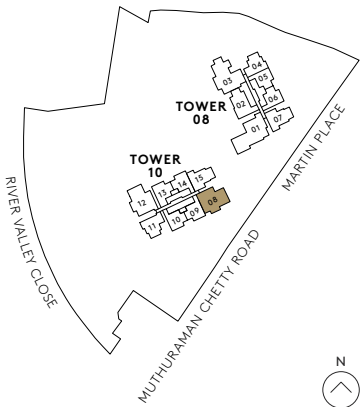
#01-08



0 1M 3M 5M

- |    |               |     |                  |    |                    |
|----|---------------|-----|------------------|----|--------------------|
| F  | FRIDGE        | SC  | SHOE CABINET     | WD | WARMER DRAWER      |
| DW | DISHWASHER    | WCH | WINE CHILLER     | CO | CONVENTIONAL OVEN  |
| IH | INDUCTION HOB | WM  | WASHER CUM DRYER | DB | DISTRIBUTION BOARD |
| GH | GAS HOB       | SO  | STEAM OVEN       |    |                    |

All plans are subjected to amendments as may be approved by the relevant authorities. Floor areas are approximate measurements and are subjected to final survey. BP approval number: A1709-00014-2016-BP01 dated: 4 May 2017.



3 BEDROOM PREMIUM  
TYPE C5-R(PL)

130 SQM / 1399 SQFT  
INCLUSIVE OF 14 SQM BALCONY & 5 SQM AC LEDGE

TOWER 10

UNIT

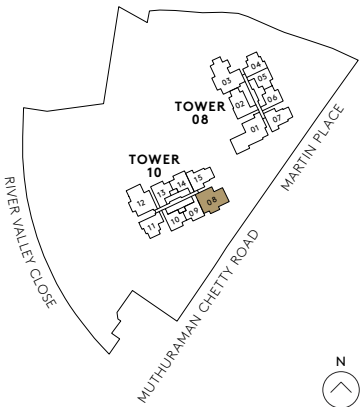
#30-08



0 1M 3M 5M

- |    |               |     |                  |    |                    |
|----|---------------|-----|------------------|----|--------------------|
| F  | FRIDGE        | SC  | SHOE CABINET     | WD | WARMER DRAWER      |
| DW | DISHWASHER    | WCH | WINE CHILLER     | CO | CONVENTIONAL OVEN  |
| IH | INDUCTION HOB | WM  | WASHER CUM DRYER | DB | DISTRIBUTION BOARD |
| GH | GAS HOB       | SO  | STEAM OVEN       |    |                    |

All plans are subjected to amendments as may be approved by the relevant authorities. Floor areas are approximate measurements and are subjected to final survey. BP approval number: A1709-00014-2016-BP01 dated: 4 May 2017.







FOR ILLUSTRATION PURPOSES ONLY

HOME WITH A VIEW



4 BEDROOM PREMIUM  
TYPE D1(PL)

161 SQM / 1733 SQFT  
INCLUSIVE OF 15 SQM BALCONY & 8 SQM AC LEDGE

TOWER 08

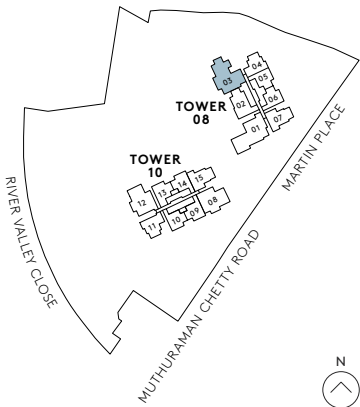
UNIT  
#02-03 to #29-03



0 1M 3M 5M

- |    |               |     |                  |    |                    |
|----|---------------|-----|------------------|----|--------------------|
| F  | FRIDGE        | SC  | SHOE CABINET     | WD | WARMER DRAWER      |
| DW | DISHWASHER    | WCH | WINE CHILLER     | CO | CONVENTIONAL OVEN  |
| IH | INDUCTION HOB | WM  | WASHER CUM DRYER | DB | DISTRIBUTION BOARD |
| GH | GAS HOB       | SO  | STEAM OVEN       |    |                    |

All plans are subjected to amendments as may be approved by the relevant authorities. Floor areas are approximate measurements and are subjected to final survey. BP approval number: A1709-00014-2016-BP01 dated: 4 May 2017.



4 BEDROOM PREMIUM  
TYPE D1-G(PL)

158 SQM / 1701 SQFT  
INCLUSIVE OF 15 SQM PES & 7 SQM AC LEDGE

TOWER 08

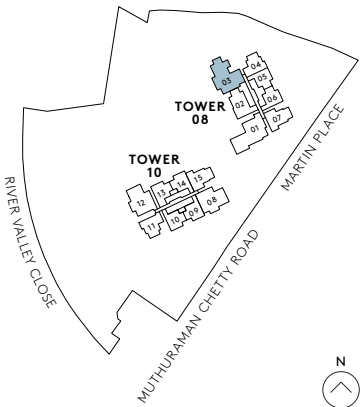
UNIT  
#01-03



0 1M 3M 5M

- |    |               |     |                  |    |                    |
|----|---------------|-----|------------------|----|--------------------|
| F  | FRIDGE        | SC  | SHOE CABINET     | WD | WARMER DRAWER      |
| DW | DISHWASHER    | WCH | WINE CHILLER     | CO | CONVENTIONAL OVEN  |
| IH | INDUCTION HOB | WM  | WASHER CUM DRYER | DB | DISTRIBUTION BOARD |
| GH | GAS HOB       | SO  | STEAM OVEN       |    |                    |

All plans are subjected to amendments as may be approved by the relevant authorities. Floor areas are approximate measurements and are subjected to final survey. BP approval number: A1709-00014-2016-BP01 dated: 4 May 2017.





4 BEDROOM PREMIUM  
TYPE D1-R(PL)

161 SQM / 1733 SQFT  
INCLUSIVE OF 15 SQM BALCONY & 8 SQM AC LEDGE

TOWER 08

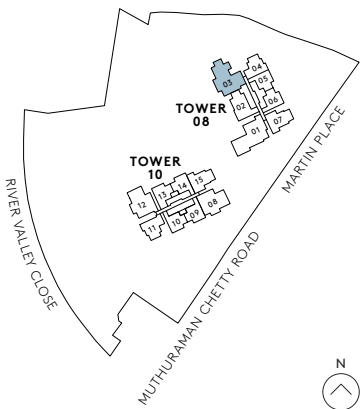
UNIT  
#30-03



0 1M 3M 5M

- |    |               |     |                  |    |                    |
|----|---------------|-----|------------------|----|--------------------|
| F  | FRIDGE        | SC  | SHOE CABINET     | WD | WARMER DRAWER      |
| DW | DISHWASHER    | WCH | WINE CHILLER     | CO | CONVENTIONAL OVEN  |
| IH | INDUCTION HOB | WM  | WASHER CUM DRYER | DB | DISTRIBUTION BOARD |
| GH | GAS HOB       | SO  | STEAM OVEN       |    |                    |

All plans are subjected to amendments as may be approved by the relevant authorities. Floor areas are approximate measurements and are subjected to final survey. BP approval number: A1709-00014-2016-BP01 dated: 4 May 2017.



4 BEDROOM PREMIUM  
TYPE D2(PL)

167 SQM / 1798 SQFT  
INCLUSIVE OF 20 SQM BALCONY & 6 SQM AC LEDGE

TOWER 08

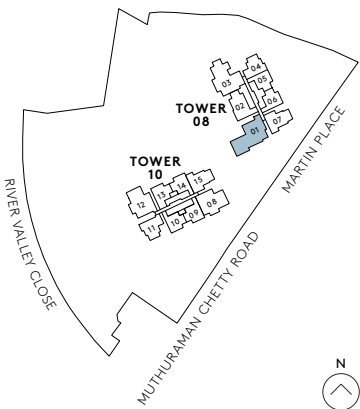
UNIT  
#02-01 TO #29-01



0 1M 3M 5M

- |    |               |     |                  |    |                    |
|----|---------------|-----|------------------|----|--------------------|
| F  | FRIDGE        | SC  | SHOE CABINET     | WD | WARMER DRAWER      |
| DW | DISHWASHER    | WCH | WINE CHILLER     | CO | CONVENTIONAL OVEN  |
| IH | INDUCTION HOB | WM  | WASHER CUM DRYER | DB | DISTRIBUTION BOARD |
| GH | GAS HOB       | SO  | STEAM OVEN       |    |                    |

All plans are subjected to amendments as may be approved by the relevant authorities. Floor areas are approximate measurements and are subjected to final survey. BP approval number: A1709-00014-2016-BP01 dated: 4 May 2017.





4 BEDROOM PREMIUM  
TYPE D2-G(PL)

167 SQM / 1798 SQFT  
INCLUSIVE OF 20 SQM PES & 6 SQM AC LEDGE

TOWER 08

UNIT

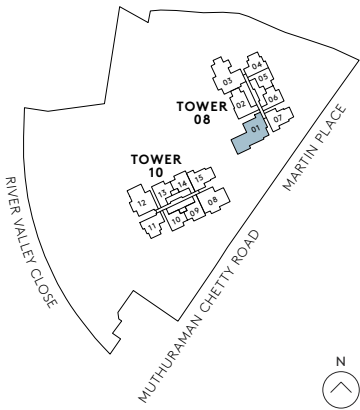
#01-01



0 1M 3M 5M

F	FRIDGE	SC	SHOE CABINET	WD	WARMER DRAWER
DW	DISHWASHER	WCH	WINE CHILLER	CO	CONVENTIONAL OVEN
IH	INDUCTION HOB	WM	WASHER CUM DRYER	DB	DISTRIBUTION BOARD
GH	GAS HOB	SO	STEAM OVEN		

All plans are subjected to amendments as may be approved by the relevant authorities. Floor areas are approximate measurements and are subjected to final survey. BP approval number: A1709-00014-2016-BP01 dated: 4 May 2017.



4 BEDROOM PREMIUM  
TYPE D2-R(PL)

167 SQM / 1798 SQFT  
INCLUSIVE OF 20 SQM BALCONY & 6 SQM AC LEDGE

TOWER 08

UNIT

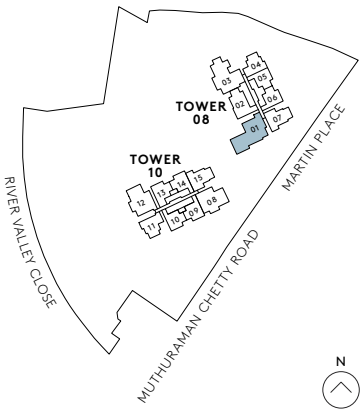
#30-01



0 1M 3M 5M

F	FRIDGE	SC	SHOE CABINET	WD	WARMER DRAWER
DW	DISHWASHER	WCH	WINE CHILLER	CO	CONVENTIONAL OVEN
IH	INDUCTION HOB	WM	WASHER CUM DRYER	DB	DISTRIBUTION BOARD
GH	GAS HOB	SO	STEAM OVEN		

All plans are subjected to amendments as may be approved by the relevant authorities. Floor areas are approximate measurements and are subjected to final survey. BP approval number: A1709-00014-2016-BP01 dated: 4 May 2017.





# GUOCOLAND SIGNATURE CONCIERGE SERVICES

## BESPOKE LIVING

GuocoLand Signature Concierge Services cater to the needs of all residents of Martin Modern. Managed by GuocoLand's Concierge team, residents may find assistance across a full host of services. Concierge services\*

include booking of residence amenities and facilities, grocery and luggage handling, laundry services, assistance with home maintenance, transportation arrangements, housekeeping and entertainment planning.



\* TERMS & CONDITIONS APPLY. SERVICES WILL BE SUBJECT TO APPLICABLE FEES AND WILL BE PROVIDED FOR A LIMITED DURATION UNTIL THE FIRST ANNUAL GENERAL MEETING OF THE MANAGEMENT CORPORATION OF THE HOUSING PROJECT. IMAGE FOR ILLUSTRATION PURPOSES ONLY.



# LUXURY FITTINGS QUALITY BRANDS

## TRUSTED BRANDS

Luxury is in the details. Martin Modern comes with top-of-the-line branded luxury fittings, including Miele kitchen appliances, SMEG refrigerator, Laufen sanitary wares, and AXOR

bathroom accessories. These brands represent the best of form and craftsmanship, reflecting the modern aesthetics and refined taste of those who call Martin Modern home.



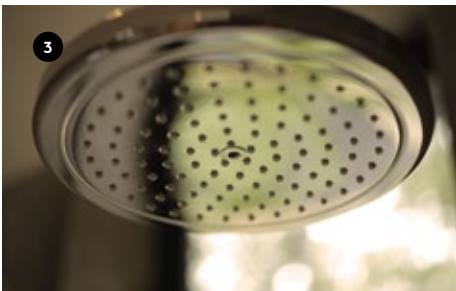
1. Miele Hood and Hob
2. SMEG Refrigerator
3. Miele Oven
4. Vintec Wine Chiller

At the time of printing of this brochure, the model and design of the products are as shown (pp. 62 to 63), but may be subject to change from time to time. All images shown in pp. 62 to 63 are for illustration purposes only.

## LUXURY FITTINGS

Luxuriously furnished, the bathrooms in Martin Modern come with full marble wall and flooring. Equipped with top-notch bathroom fittings by world-renowned designers, every bathroom is

beautiful and offers the highest quality. Smart Water Closet combines design with functional forms, bringing modern standards of hygiene, design and sustainability.



1. Axor Water Faucet & Laufen Wash Basin
2. Geberit Smart Water Closet
3. Axor Overhead Shower
4. Axor Thermostatic Mixer

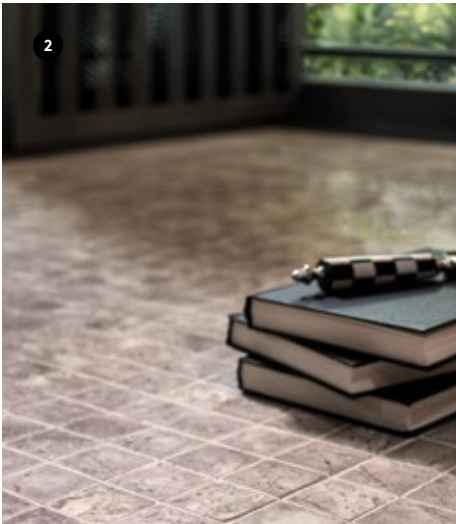


# WIRELESS SMART HOME READINESS

## LUXURIOUS BALCONY

Generously sized, the balcony extends the living space. The choice of luxurious materials includes mosaic marble flooring on the balcony, as well as perforated aluminium balcony screen for greater privacy while allowing for more natural

light and better ventilation. Selected units have two balconies to allow residents to enjoy two different views from their home and to enhance cross ventilation.



- 1. Perforated Aluminum Balcony Screen
- 2. Mosaic Marble Flooring

All images shown are for illustration purposes only.

## THE MODERN LIFESTYLE

Every unit at Martin Modern is designed with the residents' convenience and comfort in mind. A wireless smart home readiness hub allows for the possibility of integrating a vast number of

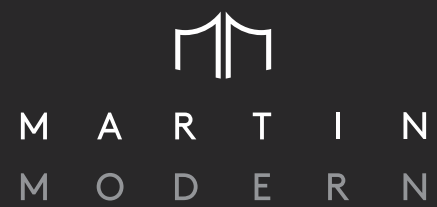
multimedia systems within the home, bringing intelligence and functionality for a convenient modern lifestyle.



FOR ILLUSTRATION PURPOSES ONLY

The unit will be equipped with a wireless smart home readiness hub in respect of specific lighting points and the air-conditioner (AC) control at designated areas within the unit. The Purchaser will be responsible (1) to initiate arrangements with the third party vendor providing the wireless smart home hub to set up the one-time customised wireless smart home system in connection with the use of his specific lighting products and the ACs; and (2) to engage an independent internet service provider for the subscription of internet service in the unit, if desired. The wireless smart home hub will be provided to the unit even if the Purchaser does not intend to arrange with the third party vendor to set up the customised wireless smart home system in the unit. At the time of printing of this brochure, the make, model, brand, design and technology of the wireless smart home hub has yet to be determined.





LUXURY PROPERTIES BY



Name of housing project: Martin Modern • Name of housing developer: Martin Modern Pte. Ltd. (Co. Reg. No. 199603059R) • Licence No. of housing developer: C1215 • Tenure of land: leasehold 99 years commencing on 28 September 2016 • Encumbrance on land: Mortgage No. IE/604090E in favour of Oversea-Chinese Banking Corporation Limited (as mortgagee and security trustee) • Location of the housing project: Lot 1590P of TS21 at Martin Place • Expected date of vacant possession: 30 June 2022 • Expected date of legal completion: 30 June 2025

DISCLAIMER: The information and contents herein are current at the time of printing and are provided on an “as is” and “as available” basis. While all reasonable care has been taken in preparing this brochure, the developer and its agents shall not be held responsible for any inaccuracies or the completeness of the information and contents herein. All renderings, illustrations, pictures, photographs and other graphic representatives and references are artist’s impressions only and may be subject to changes and deviation as further made by the developer or as required by the authorities. Nothing herein shall form part of an offer or contract or be construed as any representations by the developer or its agents. All plans are not drawn to scale, areas and measurements stated herein are approximate and are subject to adjustments on final survey.



LUXURY PROPERTIES BY



Guocoland