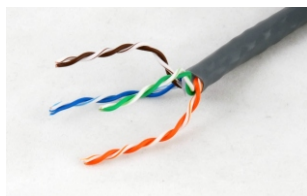


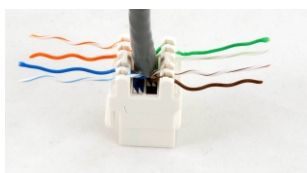
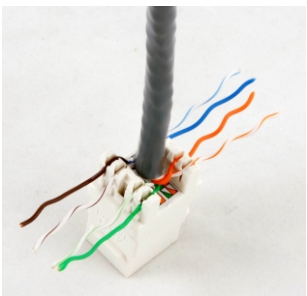
Remove about 40 mm  
of the plastic sheath



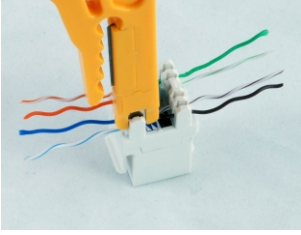
Remove the plastic cover  
of the LSA-contacts



Prepare the cable  
before the insertion

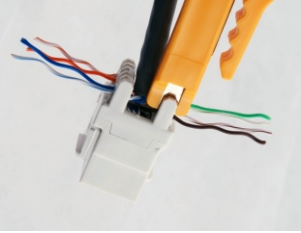


Insert the pairs of the cable into  
the plastic housing (on the top of  
the LSA-contacts) according EIA/  
TIA 568 A or B  
(pictured on the Keystone Jack)



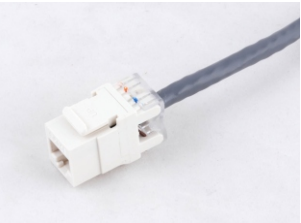
Use the insertion tool (partnr. 39931.1)  
to punch down the wires into the  
LSA-contacts

---



Use an appropriate wire cutter to cut  
off the excess length of the wires

---



Fit the plastic cover  
on the Keystone Jack

