

# FLANGE HEATERS

## Flange Heaters

Standard heaters shown in this offering have 150# ANSI rated steel flanges and Copper or Incoloy elements either silver solder brazed or welded to the flange. Standard heaters can also be supplied with 300# flanges. All heater flanges are available with Carbon Steel (SA-105), Low-Temp Carbon Steel (SA-350 LF2 CL1), 304 Stainless Steel (SA-182 F304/L) and 316 Stainless Steel (SA-182 F316/L).

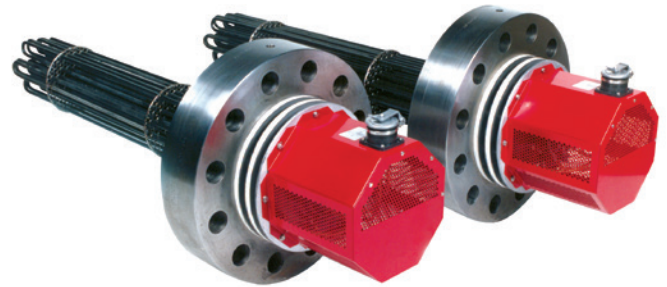
*\*special flange sizes, wattage capacities, element length, and element quantities are available upon request*

There are 3 different types of terminal boxes, to suit different environments.

General purpose for indoor heating applications in dry locations, NEMA 4 terminal boxes for indoor wet location use or outdoor applications and Explosion Proof terminal box for hazardous location areas.

Heaters are typically wired with maximum 48 Amp circuits, so higher amperage heaters will have multiple circuits.

It is important to note that the majority of heaters used in pressure vessels require ASME registration. All of our Econ flange heaters can be provided with CRN numbers for All Provinces, as well as Alberta.



## Heater Selection

**Type CXC** heaters are used primarily for heating water and have Copper sheath elements silver brazed to a steel flange

**Type CXI** heaters may also be used to heat water, especially in hot water and steam boilers. These heaters are also suitable for heating mildly corrosive solutions and have Incoloy sheath welded or brazed to a steel flange.

**Type CXF** heaters are constructed of similar materials to CXI heaters except that they have much lower watt densities. Watt densities shown here are either 23 watts/inch<sup>2</sup> or 15 watts/inch<sup>2</sup>.

8 watts/inch<sup>2</sup> design is also available through our Econ offering.

## Typical CXF Application examples based on watt density:

### 23 watts/inch<sup>2</sup>

- Degreasing solutions
- Light oils
- Gasoline
- Caustic Soda
- Citrus Juices

### 15 watts/inch<sup>2</sup>

- API 614
- Medium oils

### 8 watts/inch<sup>2</sup>

- Heavy oils
- Bunker C

### 3" FLANGE HEATERS

#### 3" - 150 LB

STEEL FLANGE / COPPER ELEMENTS | 54 - 57 WATTS/IN<sup>2</sup> | 3 ELEMENT

Kilo-Watt	Voltage	Phase	B Dim	General Purpose Terminal Box		NEMA 4 Terminal Box		Explosion Proof Terminal Box	
				No t/stat	50 - 250°F t/stat	No t/stat	50 - 250°F t/stat	No t/stat	50 - 250°F t/stat
6	480	3	20.5	CXC306F320	CXCT306F320	CXC306F320R	CXCT306F320R	CXC306F320X	CXCT306F320X
6	600	3	20.5	CXC306F320	CXCT306F320	CXC306F320R	CXCT306F320R	CXC306F320X	CXCT306F320X
9	480	3	27.5	CXC309F327	CXCT309F327	CXC309F327R	CXCT309F327R	CXC309F327X	CXCT309F327X
9	600	3	27.5	CXC309F327	CXCT309F327	CXC309F327R	CXCT309F327R	CXC309F327X	CXCT309F327X
12	480	3	34.5	CXC312F334	CXCT312F334	CXC312F334R	CXCT312F334R	CXC312F334X	CXCT312F334X
12	600	3	34.5	CXC312F334	CXCT312F334	CXC312F334R	CXCT312F334R	CXC312F334X	CXCT312F334X
15	480	3	40.5	CXC315F340	CXCT315F340	CXC315F340R	CXCT315F340R	CXC315F340X	CXCT315F340X
15	600	3	40.5	CXC315F340	CXCT315F340	CXC315F340R	CXCT315F340R	CXC315F340X	CXCT315F340X
18	480	3	47.5	CXC318F347	CXCT318F347	CXC318F347R	CXCT318F347R	CXC318F347X	CXCT318F347X
18	600	3	47.5	CXC318F347	CXCT318F347	CXC318F347R	CXCT318F347R	CXC318F347X	CXCT318F347X

#### 3" - 150 LB

STEEL FLANGE / COPPER ELEMENTS | 54 - 57 WATTS/IN<sup>2</sup> | 6 ELEMENT

Kilo-Watt	Voltage	Phase	B Dim	General Purpose Terminal Box		NEMA 4 Terminal Box		Explosion Proof Terminal Box	
				No t/stat	50 - 250°F t/stat	No t/stat	50 - 250°F t/stat	No t/stat	50 - 250°F t/stat
18	480	3	27.5	CXC618F327	CXCT618F327	CXC618F327R	CXCT618F327R	CXC618F327X	CXCT618F327X
18	600	3	27.5	CXC618F327	CXCT618F327	CXC618F327R	CXCT618F327R	CXC618F327X	CXCT618F327X
24	480	3	34.5	CXC624F334	CXCT624F334	CXC624F334R	CXCT624F334R	CXC624F334X	CXCT624F334X
24	600	3	34.5	CXC624F334	CXCT624F334	CXC624F334R	CXCT624F334R	CXC624F334X	CXCT624F334X
30	480	3	40.5	CXC630F340	CXCT630F340	CXC630F340R	CXCT630F340R	CXC630F340X	CXCT630F340X
30	600	3	40.5	CXC630F640	CXCT630F340	CXC630F340R	CXCT630F340R	CXC630F340X	CXCT630F340X

#### 3" - 150 LB

STEEL FLANGE / INCOLOY ELEMENTS | 50 WATTS/IN<sup>2</sup> | 3 ELEMENT

Kilo-Watt	Voltage	Phase	B Dim	General Purpose Terminal Box		NEMA 4 Terminal Box		Explosion Proof Terminal Box	
				No t/stat	50 - 250°F t/stat	No t/stat	50 - 250°F t/stat	No t/stat	50 - 250°F t/stat
6	480	3	21.75	CXI306F321	CXIT306F321	CXI306F321R	CXIT306F321R	CXI306F321X	CXIT306F321X
6	600	3	21.75	CXI306F321	CXIT306F321	CXI306F321R	CXIT306F321R	CXI306F321X	CXIT306F321X
7.5	480	3	25.25	CXI307F325	CXIT307F325	CXI307F325R	CXIT307F325R	CXI307F325X	CXIT307F325X
7.5	600	3	25.25	CXI307F325	CXIT307F325	CXI307F325R	CXIT307F325R	CXI307F325X	CXIT307F325X
9	480	3	29	CXI309F329	CXIT309F329	CXI309F329R	CXIT309F329R	CXI309F329X	CXIT309F329X
9	600	3	29	CXI309F329	CXIT309F329	CXI309F329R	CXIT309F329R	CXI309F329X	CXIT309F329X
12	480	3	36.5	CXI312F336	CXIT312F336	CXI312F336R	CXIT312F336R	CXI312F336X	CXIT312F336X
12	600	3	36.5	CXI312F336	CXIT312F336	CXI312F336R	CXIT312F336R	CXI312F336X	CXIT312F336X
15	480	3	43.75	CXI315F343	CXIT315F343	CXI315F343R	CXIT315F343R	CXI315F343X	CXIT315F343X
15	600	3	43.75	CXI315F343	CXIT315F343	CXI315F343R	CXIT315F343R	CXI315F343X	CXIT315F343X
18	480	3	51.25	CXI318F351	CXIT318F351	CXI318F351R	CXIT318F351R	CXI318F351X	CXIT318F351X
18	600	3	51.25	CXI318F351	CXIT318F351	CXI318F351R	CXIT318F351R	CXI318F351X	CXIT318F351X

### 3" - 150 LB

STEEL FLANGE / INCOLOY ELEMENT | 23 WATTS/IN<sup>2</sup> | 3 ELEMENT

Kilo-Watt	Voltage	Phase	B Dim	General Purpose Terminal Box		NEMA 4 Terminal Box		Explosion Proof Terminal Box	
				No t/stat	50 - 250°F t/stat	No t/stat	50 - 250°F t/stat	No t/stat	50 - 250°F t/stat
3	480	3	23	CXF303F323	CXFT303F323	CXF303F323R	CXFT303F323R	CXF303F323X	CXFT303F323X
3	600	3	23	CXF303F323	CXFT303F323	CXF303F323R	CXFT303F323R	CXF303F323X	CXFT303F323X
4.5	480	3	31	CXF304F331	CXFT304F331	CXF304F331R	CXFT304F331R	CXF304F331X	CXFT304F331X
4.5	600	3	31	CXF304F331	CXFT304F331	CXF304F331R	CXFT304F331R	CXF304F331X	CXFT304F331X
6	480	3	39	CXF306F339	CXFT306F339	CXF306F339R	CXFT306F339R	CXF306F339X	CXFT306F339X
6	600	3	39	CXF306F339	CXFT306F339	CXF306F339R	CXFT306F339R	CXF306F339X	CXFT306F339X
7.5	480	3	47	CXF307F347	CXFT307F347	CXF307F347R	CXFT307F347R	CXF307F347X	CXFT307F347X
7.5	600	3	47	CXF307F347	CXFT307F347	CXF307F347R	CXFT307F347R	CXF307F347X	CXFT307F347X
9	480	3	55.25	CXF309F355	CXFT309F355	CXF309F355R	CXFT309F355R	CXF309F355X	CXFT309F355X
9	600	3	55.25	CXF309F355	CXFT309F355	CXF309F355R	CXFT309F355R	CXF309F355X	CXFT309F355X
12	480	3	71.25	CXF312F371	CXFT312F371	CXF312F371R	CXFT312F371R	CXF312F371X	CXFT312F371X
12	600	3	71.25	CXF312F371	CXFT312F371	CXF312F371R	CXFT312F371R	CXF312F371X	CXFT312F371X

### 3" - 150 LB

STEEL FLANGE / INCOLOY ELEMENT | 15 WATTS/IN<sup>2</sup> | 3 ELEMENT

Kilo-Watt	Voltage	Phase	B Dim	General Purpose Terminal Box		NEMA 4 Terminal Box		Explosion Proof Terminal Box	
				No t/stat	50 - 250°F t/stat	No t/stat	50 - 250°F t/stat	No t/stat	50 - 250°F t/stat
3	480	3	31.5	CXF303F331	CXFT303F331	CXF303F331R	CXFT303F331R	CXF303F331X	CXFT303F331X
3	600	3	31.5	CXF303F331	CXFT303F331	CXF303F331R	CXFT303F331R	CXF303F331X	CXFT303F331X
4.5	480	3	43.75	CXF304F343	CXFT304F343	CXF304F343R	CXFT304F343R	CXF304F343X	CXFT304F343X
4.5	600	3	43.75	CXF304F343	CXFT304F343	CXF304F343R	CXFT304F343R	CXF304F343X	CXFT304F343X
6	480	3	56.25	CXF306F356	CXFT306F356	CXF306F356R	CXFT306F356R	CXF306F356X	CXFT306F356X
6	600	3	56.25	CXF306F356	CXFT306F356	CXF306F356R	CXFT306F356R	CXF306F356X	CXFT306F356X
7.5	480	3	68.5	CXF307F368	CXFT307F368	CXF307F368R	CXFT307F368R	CXF307F368X	CXFT307F368X
7.5	600	3	68.5	CXF307F368	CXFT307F368	CXF307F368R	CXFT307F368R	CXF307F368X	CXFT307F368X



# 4" FLANGE HEATERS

## 4" - 150 LB

STEEL FLANGE / COPPER ELEMENTS | 54 - 57 WATTS/IN<sup>2</sup> | 6 ELEMENT

Kilo-Watt	Voltage	Phase	B Dim	General Purpose Terminal Box		NEMA 4 Terminal Box		Explosion Proof Terminal Box	
				No t/stat	50 - 250°F t/stat	No t/stat	50 - 250°F t/stat	No t/stat	50 - 250°F t/stat
12	480	3	20.5	CXC612F420	CXCT612F420	CXC612F420R	CXCT612F420R	CXC612F420X	CXCT612F420X
12	600	3	20.5	CXC612F420	CXCT612F420	CXC612F420R	CXCT612F420R	CXC612F420X	CXCT612F420X
15	480	3	24.5	CXC615F424	CXCT615F424	CXC615F424R	CXCT615F424R	CXC615F424X	CXCT615F424X
15	600	3	24.5	CXC615F424	CXCT615F424	CXC615F424R	CXCT615F424R	CXC615F424X	CXCT615F424X
18	480	3	27.5	CXC618F427	CXCT618F427	CXC618F427R	CXCT618F427R	CXC618F427X	CXCT618F427X
18	600	3	27.5	CXC618F427	CXCT618F427	CXC618F427R	CXCT618F427R	CXC618F427X	CXCT618F427X
24	480	3	34.5	CXC624F434	CXCT624F434	CXC624F434R	CXCT624F434R	CXC624F434X	CXCT624F434X
24	600	3	34.5	CXC624F434	CXCT624F434	CXC624F434R	CXCT624F434R	CXC624F434X	CXCT624F434X
30	480	3	40.5	CXC630F340	CXCT630F340	CXC630F340R	CXCT630F340R	CXC630F340X	CXCT630F340X
30	600	3	40.5	CXC630F340	CXCT630F340	CXC630F340R	CXCT630F340R	CXC630F340X	CXCT630F340X

## 4" - 150 LB

STEEL FLANGE / COPPER ELEMENTS | 54 - 57 WATTS/IN<sup>2</sup> | 9 ELEMENT

Kilo-Watt	Voltage	Phase	B Dim	General Purpose Terminal Box		NEMA 4 Terminal Box		Explosion Proof Terminal Box	
				No t/stat	50 - 250°F t/stat	No t/stat	50 - 250°F t/stat	No t/stat	50 - 250°F t/stat
27	480	3	27.5	CXC927F427	CXCT927F427	CXC927F427R	CXCT927F427R	CXC927F427X	CXCT927F427X
27	600	3	27.5	CXC927F427	CXCT927F427	CXC927F427R	CXCT927F427R	CXC927F427X	CXCT927F427X
36	480	3	34.5	CXC936F434	CXCT936F434	CXC936F434R	CXCT936F434R	CXC936F434X	CXCT936F434X
36	600	3	34.5	CXC936F434	CXCT936F434	CXC936F434R	CXCT936F434R	CXC936F434X	CXCT936F434X
45	480	3	40.5	CXC945F440	CXCT945F440	CXC945F440R	CXCT945F440R	CXC945F440X	CXCT945F440X
45	600	3	40.5	CXC945F440	CXCT945F440	CXC945F440R	CXCT945F440R	CXC945F440X	CXCT945F440X



### 4" - 150 LB

STEEL FLANGE / INCOLOY ELEMENTS | 50 WATTS/IN<sup>2</sup> | 6 ELEMENT

Kilo-Watt	Voltage	Phase	B Dim	General Purpose Terminal Box		NEMA 4 Terminal Box		Explosion Proof Terminal Box	
				No t/stat	50 - 250°F t/stat	No t/stat	50 - 250°F t/stat	No t/stat	50 - 250°F t/stat
12	480	3	21.75	CXI612F421	CXIT612F421	CXI612F421R	CXIT612F421R	CXI612F421X	CXIT612F421X
12	600	3	21.75	CXI612F421	CXIT612F421	CXI612F421R	CXIT612F421R	CXI612F421X	CXIT612F421X
15	480	3	25.25	CXI615F425	CXIT615F425	CXI615F425R	CXIT615F425R	CXI615F425X	CXIT615F425X
15	600	3	25.25	CXI615F425	CXIT615F425	CXI615F425R	CXIT615F425R	CXI615F425X	CXIT615F425X
18	480	3	29	CXI618F429	CXIT618F429	CXI618F429R	CXIT618F429R	CXI618F429X	CXIT618F429X
18	600	3	29	CXI618F429	CXIT618F429	CXI618F429R	CXIT618F429R	CXI618F429X	CXIT618F429X
24	480	3	36.5	CXI624F436	CXIT624F436	CXI624F436R	CXIT624F436R	CXI624F436X	CXIT624F436X
24	600	3	36.5	CXI624F436	CXIT624F436	CXI624F436R	CXIT624F436R	CXI624F436X	CXIT624F436X
30	480	3	43.75	CXI630F443	CXIT630F443	CXI630F443R	CXIT630F443R	CXI630F443X	CXIT630F443X
30	600	3	43.75	CXI630F443	CXIT630F443	CXI630F443R	CXIT630F443R	CXI630F443X	CXIT630F443X
36	600	3	51.25	CXI636F451	CXIT636F451	CXI636F451R	CXIT636F451R	CXI636F451X	CXIT636F451X

### 4" - 150 LB

STEEL FLANGE / INCOLOY ELEMENTS | 23 WATTS/IN<sup>2</sup> | 6 ELEMENT

Kilo-Watt	Voltage	Phase	B Dim	General Purpose Terminal Box		NEMA 4 Terminal Box		Explosion Proof Terminal Box	
				No t/stat	50 - 250°F t/stat	No t/stat	50 - 250°F t/stat	No t/stat	50 - 250°F t/stat
6	480	3	23	CXF606F423	CXFT606F423	CXF606F423R	CXFT606F423R	CXF606F423X	CXFT606F423X
6	600	3	23	CXF606F423	CXFT606F423	CXF606F423R	CXFT606F423R	CXF606F423X	CXFT606F423X
9	480	3	31	CXF609F431	CXFT609F431	CXF609F431R	CXFT609F431R	CXF609F431X	CXFT609F431X
9	600	3	31	CXF609F431	CXFT609F431	CXF609F431R	CXFT609F431R	CXF609F431X	CXFT609F431X
12	480	3	39	CXF612F439	CXFT612F439	CXF612F439R	CXFT612F439R	CXF612F439X	CXFT612F439X
12	600	3	39	CXF612F439	CXFT612F439	CXF612F439R	CXFT612F439R	CXF612F439X	CXFT612F439X
15	480	3	47	CXF615F447	CXFT615F447	CXF615F447R	CXFT615F447R	CXF615F447X	CXFT615F447X
15	600	3	47	CXF615F447	CXFT615F447	CXF615F447R	CXFT615F447R	CXF615F447X	CXFT615F447X
18	480	3	55.25	CXF618F455	CXFT618F455	CXF618F455R	CXFT618F455R	CXF618F455X	CXFT618F455X
18	600	3	55.25	CXF618F455	CXFT618F455	CXF618F455R	CXFT618F455R	CXF618F455X	CXFT618F455X
24	480	3	71.25	CXF624F471	CXFT624F471	CXF624F471R	CXFT624F471R	CXF624F471X	CXFT624F471X
24	600	3	71.25	CXF624F371	CXFT624F471	CXF624F471R	CXFT624F471R	CXF624F471X	CXFT624F471X

### 4" - 150 LB

STEEL FLANGE / INCOLOY ELEMENTS | 15 WATTS/IN<sup>2</sup> | 6 ELEMENT

Kilo-Watt	Voltage	Phase	B Dim	General Purpose Terminal Box		NEMA 4 Terminal Box		Explosion Proof Terminal Box	
				No t/stat	50 - 250°F t/stat	No t/stat	50 - 250°F t/stat	No t/stat	50 - 250°F t/stat
6	480	3	31.5	CXF606F431	CXFT606F431	CXF606F431R	CXFT606F431R	CXF606F431X	CXFT606F431X
6	600	3	31.5	CXF606F431	CXFT606F431	CXF606F431R	CXFT606F431R	CXF606F431X	CXFT606F431X
9	480	3	43.75	CXF609F443	CXFT609F443	CXF609F443R	CXFT609F443R	CXF609F443X	CXFT609F443X
9	600	3	43.75	CXF609F443	CXFT609F443	CXF609F443R	CXFT609F443R	CXF609F443X	CXFT609F443X
12	480	3	56.25	CXF612F456	CXFT612F456	CXF612F456R	CXFT612F456R	CXF612F456X	CXFT612F456X
12	600	3	56.25	CXF612F456	CXFT612F456	CXF612F456R	CXFT612F456R	CXF612F456X	CXFT612F456X
15	480	3	68.5	CXF615F468	CXFT615F468	CXF615F468R	CXFT615F468R	CXF615F468X	CXFT615F468X
15	600	3	68.5	CXF615F468	CXFT615F468	CXF615F468R	CXFT615F468R	CXF615F468X	CXFT615F468X

## 5" FLANGE HEATERS

### 5" - 150 LB

STEEL FLANGE / COPPER ELEMENTS | 54-57 WATTS/IN<sup>2</sup> | 6 ELEMENT

Kilo-Watt	Voltage	Phase	B Dim	General Purpose Terminal Box		NEMA 4 Terminal Box		Explosion Proof Terminal Box	
				No t/stat	50 - 250°F t/stat	No t/stat	50 - 250°F t/stat	No t/stat	50 - 250°F t/stat
12	480	3	20.5	CXC612F520	CXCT612F520	CXC612F520R	CXCT612F520R	CXC612F520X	CXCT612F520X
12	600	3	20.5	CXC612F520	CXCT612F520	CXC612F520R	CXCT612F520R	CXC612F520X	CXCT612F520X
15	480	3	24.5	CXC615F524	CXCT615F524	CXC615F524R	CXCT615F524R	CXC615F524X	CXCT615F524X
15	600	3	24.5	CXC615F524	CXCT615F524	CXC615F524R	CXCT615F524R	CXC615F524X	CXCT615F524X
18	480	3	27.5	CXC618F527	CXCT618F527	CXC618F527R	CXCT618F527R	CXC618F527X	CXCT618F527X
18	600	3	27.5	CXC618F527	CXCT618F527	CXC618F527R	CXCT618F527R	CXC618F527X	CXCT618F527X
24	480	3	34.5	CXC624F534	CXCT624F534	CXC624F534R	CXCT624F534R	CXC624F534X	CXCT624F534X
24	600	3	34.5	CXC624F534	CXCT624F534	CXC624F534R	CXCT624F534R	CXC624F534X	CXCT624F534X
30	480	3	40.5	CXC630F540	CXCT630F540	CXC630F540R	CXCT630F540R	CXC630F540X	CXCT630F540X
30	600	3	40.5	CXC630F540	CXCT630F540	CXC630F540R	CXCT630F540R	CXC630F540X	CXCT630F540X

### 5" - 150 LB

STEEL FLANGE / COPPER ELEMENTS | 54-57 WATTS/IN<sup>2</sup> | 9 ELEMENT

Kilo-Watt	Voltage	Phase	B Dim	General Purpose Terminal Box		NEMA 4 Terminal Box		Explosion Proof Terminal Box	
				No t/stat	50 - 250°F t/stat	No t/stat	50 - 250°F t/stat	No t/stat	50 - 250°F t/stat
27	480	3	27.5	CXC927F527	CXCT927F527	CXC927F527R	CXCT927F527R	CXC927F527X	CXCT927F527X
27	600	3	27.5	CXC927F527	CXCT927F527	CXC927F527R	CXCT927F527R	CXC927F527X	CXCT927F527X
36	480	3	34.5	CXC936F534	CXCT936F534	CXC936F534R	CXCT936F534R	CXC936F534X	CXCT936F534X
36	600	3	34.5	CXC936F534	CXCT936F534	CXC936F534R	CXCT936F534R	CXC936F534X	CXCT936F534X
45	480	3	40.5	CXC945F540	CXCT945F540	CXC945F540R	CXCT945F540R	CXC945F540X	CXCT945F540X
45	600	3	40.5	CXC945F540	CXCT945F540	CXC945F540R	CXCT945F540R	CXC945F540X	CXCT945F540X

### 5" - 150 LB

STEEL FLANGE / INCOLOY ELEMENTS | 50 WATTS/IN<sup>2</sup> | 6 ELEMENT

Kilo-Watt	Voltage	Phase	B Dim	General Purpose Terminal Box		NEMA 4 Terminal Box		Explosion Proof Terminal Box	
				No t/stat	50 - 250°F t/stat	No t/stat	50 - 250°F t/stat	No t/stat	50 - 250°F t/stat
12	480	3	21.75	CXI612F521	CXIT612F521	CXI612F521R	CXIT612F521R	CXI612F521X	CXIT612F521X
12	600	3	21.75	CXI612F521	CXIT612F521	CXI612F521R	CXIT612F521R	CXI612F521X	CXIT612F521X
15	480	3	25.25	CXI615F525	CXIT615F525	CXI615F525R	CXIT615F525R	CXI615F525X	CXIT615F525X
15	600	3	25.25	CXI615F525	CXIT615F525	CXI615F525R	CXIT615F525R	CXI615F525X	CXIT615F525X
18	480	3	29	CXI618F529	CXIT618F529	CXI618F529R	CXIT618F529R	CXI618F529X	CXIT618F529X
18	600	3	29	CXI618F529	CXIT618F529	CXI618F529R	CXIT618F529R	CXI618F529X	CXIT618F529X
24	480	3	36.5	CXI624F536	CXIT624F536	CXI624F536R	CXIT624F536R	CXI624F536X	CXIT624F536X
24	600	3	36.5	CXI624F536	CXIT624F536	CXI624F536R	CXIT624F536R	CXI624F536X	CXIT624F536X
30	480	3	43.75	CXI630F543	CXIT630F543	CXI630F543R	CXIT630F543R	CXI630F543X	CXIT630F543X
30	600	3	43.75	CXI630F543	CXIT630F543	CXI630F543R	CXIT630F543R	CXI630F543X	CXIT630F543X
36	480	3	51.25	CXI636F551	CXIT636F551	CXI636F551R	CXIT636F551R	CXI636F551X	CXIT636F551X
36	600	3	51.25	CXI636F551	CXIT636F551	CXI636F551R	CXIT636F551R	CXI636F551X	CXIT636F551X

## 5" - 150 LB

STEEL FLANGE / INCOLOY ELEMENTS | 50 WATTS/IN<sup>2</sup> | 9 ELEMENT

Kilo-Watt	Voltage	Phase	B Dim	General Purpose Terminal Box		NEMA 4 Terminal Box		Explosion Proof Terminal Box	
				No t/stat	50 - 250°F t/stat	No t/stat	50 - 250°F t/stat	No t/stat	50 - 250°F t/stat
18	480	3	21.75	CXI918F521	CXIT918F521	CXI918F521R	CXIT918F521R	CXI918F521X	CXIT918F521X
18	600	3	21.75	CXI918F521	CXIT918F521	CXI918F521R	CXIT918F521R	CXI918F521X	CXIT918F521X
22.5	480	3	25.25	CXI922F525	CXIT922F525	CXI922F525R	CXIT922F525R	CXI922F525X	CXIT922F525X
22.5	600	3	25.25	CXI922F525	CXIT922F525	CXI922F525R	CXIT922F525R	CXI922F525X	CXIT922F525X
27	480	3	29	CXI927F529	CXIT927F529	CXI927F529R	CXIT927F529R	CXI927F529X	CXIT927F529X
27	600	3	29	CXI927F529	CXIT927F529	CXI927F529R	CXIT927F529R	CXI927F529X	CXIT927F529X
36	480	3	36.5	CXI936F536	CXIT936F536	CXI936F536R	CXIT936F536R	CXI936F536X	CXIT936F536X
36	600	3	36.5	CXI936F536	CXIT936F536	CXI936F536R	CXIT936F536R	CXI936F536X	CXIT936F536X
45	480	3	43.75	CXI945F543	CXIT945F543	CXI945F543R	CXIT945F543R	CXI945F543X	CXIT945F543X
45	600	3	43.75	CXI945F543	CXIT945F543	CXI945F543R	CXIT945F543R	CXI945F543X	CXIT945F543X
54	480	3	51.25	CXI954F551	CXIT954F551	CXI954F551R	CXIT954F551R	CXI954F551X	CXIT954F551X
54	600	3	51.25	CXI954F551	CXIT954F551	CXI954F551R	CXIT954F551R	CXI954F551X	CXIT954F551X

## 5" - 150 LB

STEEL FLANGE / INCOLOY ELEMENTS | 23 WATTS/IN<sup>2</sup> | 6 ELEMENT

Kilo-Watt	Voltage	Phase	B Dim	General Purpose Terminal Box		NEMA 4 Terminal Box		Explosion Proof Terminal Box	
				No t/stat	50 - 250°F t/stat	No t/stat	50 - 250°F t/stat	No t/stat	50 - 250°F t/stat
6	480	3	23	CXF606F523	CXFT606F523	CXF606F523R	CXFT606F523R	CXI918F523X	CXIT918F523X
6	600	3	23	CXF606F523	CXFT606F523	CXF606F523R	CXFT606F523R	CXI918F523X	CXIT918F523X
9	480	3	31	CXF609F531	CXFT609F531	CXF609F531R	CXFT609F531R	CXI922F531X	CXIT922F531X
9	600	3	31	CXF609F531	CXFT609F531	CXF609F531R	CXFT609F531R	CXI922F531X	CXIT922F531X
12	480	3	39	CXF612F539	CXFT612F539	CXF612F539R	CXFT612F539R	CXI927F539X	CXIT927F539X
12	600	3	39	CXF612F539	CXFT612F539	CXF612F539R	CXFT612F539R	CXI927F539X	CXIT927F539X
15	480	3	47	CXF615F547	CXFT615F547	CXF615F547R	CXFT615F547R	CXI936F547X	CXIT936F547X
15	600	3	47	CXF615F547	CXFT615F547	CXF615F547R	CXFT615F547R	CXI936F547X	CXIT936F547X
18	480	3	55.25	CXF618F555	CXFT618F555	CXF618F555R	CXFT618F555R	CXI945F555X	CXIT945F555X
18	600	3	55.25	CXF618F555	CXFT618F555	CXF618F555R	CXFT618F555R	CXI945F555X	CXIT945F555X
24	480	3	71.25	CXF624F571	CXFT624F571	CXF624F571R	CXFT624F571R	CXI954F571 X	CXIT954F571 X
24	600	3	71.25	CXF624F571	CXFT624F571	CXF624F571R	CXFT624F571R	CXI954F571 X	CXIT954F571 X



### 5" - 150 LB

STEEL FLANGE / INCOLOY ELEMENTS | 23 WATTS/IN<sup>2</sup> | 9 ELEMENT

Kilo-Watt	Voltage	Phase	B Dim	General Purpose Terminal Box		NEMA 4 Terminal Box		Explosion Proof Terminal Box	
				No t/stat	50 - 250°F t/stat	No t/stat	50 - 250°F t/stat	No t/stat	50 - 250°F t/stat
9	480	3	23	CXF909F523	CXFT909F523	CXF909F523R	CXFT909F523R	CXF909F523X	CXFT909F423X
9	600	3	23	CXF909F523	CXFT909F523	CXF909F523R	CXFT909F523R	CXF909F523X	CXFT909F423X
13.5	480	3	31	CXF913F531	CXFT913F531	CXF913F531R	CXFT913F531R	CXF913F531X	CXFT913F431X
13.5	600	3	31	CXF913F531	CXFT913F531	CXF913F531R	CXFT913F531R	CXF913F531X	CXFT913F431X
18	480	3	39	CXF918F539	CXFT918F539	CXF918F539R	CXFT918F539R	CXF918F539X	CXFT918F439X
18	600	3	39	CXF918F539	CXFT918F539	CXF918F539R	CXFT918F539R	CXF918F539X	CXFT918F439X
22.5	480	3	47	CXF922F547	CXFT922F547	CXF922F547R	CXFT922F547R	CXF922F547X	CXFT922F447X
22.5	600	3	47	CXF922F547	CXFT922F547	CXF922F547R	CXFT922F547R	CXF922F547X	CXFT922F447X
27	480	3	55.25	CXF927F555	CXFT927F555	CXF927F555R	CXFT927F555R	CXF927F555X	CXFT927F455X
27	600	3	55.25	CXF927F555	CXFT927F555	CXF927F555R	CXFT927F555R	CXF927F555X	CXFT927F455X
36	480	3	71.25	CXF936F571	CXFT936F571	CXF936F571R	CXFT936F571R	CXF936F471X	CXFT936F471X
36	600	3	71.25	CXF936F571	CXFT936F571	CXF936F571R	CXFT936F571R	CXF936F471X	CXFT936F471X

### 5" - 150 LB

STEEL FLANGE / INCOLOY ELEMENTS | 15 WATTS/IN<sup>2</sup> | 6 ELEMENT

Kilo-Watt	Voltage	Phase	B Dim	General Purpose Terminal Box		NEMA 4 Terminal Box		Explosion Proof Terminal Box	
				No t/stat	50 - 250°F t/stat	No t/stat	50 - 250°F t/stat	No t/stat	50 - 250°F t/stat
6	480	3	31.5	CXF606F531	CXFT606F531	CXF606F531R	CXFT606F531R	CXF606F531X	CXFT606F531X
6	600	3	31.5	CXF606F531	CXFT606F531	CXF606F531R	CXFT606F531R	CXF606F531X	CXFT606F531X
9	480	3	43.75	CXF609F543	CXFT609F543	CXF609F543R	CXFT609F543R	CXF609F543X	CXFT609F543X
9	600	3	43.75	CXF609F543	CXFT609F543	CXF609F543R	CXFT609F543R	CXF609F543X	CXFT609F543X
12	480	3	56.25	CXF612F556	CXFT612F556	CXF612F556R	CXFT612F556R	CXF612F556X	CXFT612F556X
12	600	3	56.25	CXF612F556	CXFT612F556	CXF612F556R	CXFT612F556R	CXF612F556X	CXFT612F556X
15	480	3	68.5	CXF615F568	CXFT615F568	CXF615F568R	CXFT615F568R	CXF615F568X	CXFT615F568X
15	600	3	68.5	CXF615F568	CXFT615F568	CXF615F568R	CXFT615F568R	CXF615F568X	CXFT615F568X

### 5" - 150 LB

STEEL FLANGE / INCOLOY ELEMENTS | 15 WATTS/IN<sup>2</sup> | 9 ELEMENT

Kilo-Watt	Voltage	Phase	B Dim	General Purpose Terminal Box		NEMA 4 Terminal Box		Explosion Proof Terminal Box	
				No t/stat	50 - 250°F t/stat	No t/stat	50 - 250°F t/stat	No t/stat	50 - 250°F t/stat
9	480	3	31.5	CXF909F531	CXFT909F531	CXF909F531R	CXFT909F531R	CXF909F531X	CXFT909F531X
9	600	3	31.5	CXF909F531	CXFT909F531	CXF909F531R	CXFT909F531R	CXF909F531X	CXFT909F531X
13.5	480	3	43.75	CXF913F543	CXFT913F543	CXF913F543R	CXFT913F543R	CXF913F543X	CXFT913F543X
13.5	600	3	43.75	CXF913F543	CXFT913F543	CXF913F543R	CXFT913F543R	CXF913F543X	CXFT913F543X
18	480	3	56.25	CXF918F556	CXFT918F556	CXF918F556R	CXFT918F556R	CXF918F556X	CXFT918F556X
18	600	3	56.25	CXF918F556	CXFT918F556	CXF918F556R	CXFT918F556R	CXF918F556X	CXFT918F556X
22.5	480	3	68.5	CXF922F568	CXFT922F568	CXF922F568R	CXFT922F568R	CXF922F568X	CXFT922F568X
22.5	600	3	68.5	CXF922F568	CXFT922F568	CXF922F568R	CXFT922F568R	CXF922F568X	CXFT922F568X



# 6" FLANGE HEATERS

## 6" - 150 LB

STEEL FLANGE / COPPER ELEMENTS | 54-57 WATTS/IN<sup>2</sup> | 12 ELEMENT

Kilo-Watt	Voltage	Phase	B Dim	General Purpose Terminal Box		NEMA 4 Terminal Box		Explosion Proof Terminal Box	
				No t/stat	50 - 250°F t/stat	No t/stat	50 - 250°F t/stat	No t/stat	50 - 250°F t/stat
36	480	3	27.25	CXC1236F627	CXCT1236F627	CXC1236F627R	CXCT1236F627R	CXC1236F627X	CXCT1236F627X
36	600	3	27.25	CXC1236F627	CXCT1236F627	CXC1236F627R	CXCT1236F627R	CXC1236F627X	CXCT1236F627X
48	480	3	34.25	CXC1248F634	CXCT1248F634	CXC1248F634R	CXCT1248F634R	CXC1248F634X	CXCT1248F634X
48	600	3	34.25	CXC1248F634	CXCT1248F634	CXC1248F634R	CXCT1248F634R	CXC1248F634X	CXCT1248F634X
60	480	3	40.25	CXC1260F640	CXCT1260F640	CXC1260F640R	CXCT1260F640R	CXC1260F640X	CXCT1260F640X
60	600	3	40.25	CXC1260F640	CXCT1260F640	CXC1260F640R	CXCT1260F640R	CXC1260F640X	CXCT1260F640X
72	480	3	47.25	CXC1272F647	CXCT1272F647	CXC1272F647R	CXCT1272F647R	CXC1272F647X	CXCT1272F647X
72	600	3	47.25	CXC1272F647	CXCT1272F647	CXC1272F647R	CXCT1272F647R	CXC1272F647X	CXCT1272F647X

## 6" - 150 LB

STEEL FLANGE / COPPER ELEMENTS | 54-57 WATTS/IN<sup>2</sup> | 15 ELEMENT

Kilo-Watt	Voltage	Phase	B Dim	General Purpose Terminal Box		NEMA 4 Terminal Box		Explosion Proof Terminal Box	
				No t/stat	50 - 250°F t/stat	No t/stat	50 - 250°F t/stat	No t/stat	50 - 250°F t/stat
60	480	3	34.25	CXC1560F634	CXCT1560F634	CXC1560F634R	CXCT1560F634R	CXC1560F634X	CXCT1560F634X
60	600	3	34.25	CXC1560F634	CXCT1560F634	CXC1560F634R	CXCT1560F634R	CXC1560F634X	CXCT1560F634X
75	480	3	40.25	CXC1575F640	CXCT1575F640	CXC1575F640R	CXCT1575F640R	CXC1575F640X	CXCT1575F640X
75	600	3	40.25	CXC1575F640	CXCT1575F640	CXC1575F640R	CXCT1575F640R	CXC1575F640X	CXCT1575F640X
90	480	3	47.25	CXC1590F647	CXCT1590F647	CXC1590F647R	CXCT1590F647R	CXC1590F647X	CXCT1590F647X
90	600	3	47.25	CXC1590F647	CXCT1590F647	CXC1590F647R	CXCT1590F647R	CXC1590F647X	CXCT1590F647X

## 6" - 150 LB

STEEL FLANGE / INCOLOY ELEMENTS | 50 WATTS/IN<sup>2</sup> | 12 ELEMENT

Kilo-Watt	Voltage	Phase	B Dim	General Purpose Terminal Box		NEMA 4 Terminal Box		Explosion Proof Terminal Box	
				No t/stat	50 - 250°F t/stat	No t/stat	50 - 250°F t/stat	No t/stat	50 - 250°F t/stat
24	480	3	21.5	CXI1224F621	CXIT1224F621	CXI1224F621R	CXIT1224F621R	CXI1224F621X	CXIT1224F621X
24	600	3	21.5	CXI1224F621	CXIT1224F621	CXI1224F621R	CXIT1224F621R	CXI1224F621X	CXIT1224F621X
30	480	3	25.25	CXI1230F625	CXIT1230F625	CXI1230F625R	CXIT1230F625R	CXI1230F625X	CXIT1230F625X
30	600	3	25.25	CXI1230F625	CXIT1230F625	CXI1230F625R	CXIT1230F625R	CXI1230F625X	CXIT1230F625X
36	480	3	29	CXI1236F629	CXIT1236F629	CXI1236F629R	CXIT1236F629R	CXI1236F629X	CXIT1236F629X
36	600	3	29	CXI1236F629	CXIT1236F629	CXI1236F629R	CXIT1236F629R	CXI1236F629X	CXIT1236F629X
48	480	3	36.25	CXI1248F636	CXIT1248F636	CXI1248F636R	CXIT1248F636R	CXI1248F636X	CXIT1248F636X
48	600	3	36.25	CXI1248F636	CXIT1248F636	CXI1248F636R	CXIT1248F636R	CXI1248F636X	CXIT1248F636X
60	480	3	43.75	CXI1260F643	CXIT1260F643	CXI1260F643R	CXIT1260F643R	CXI1260F643X	CXIT1260F643X
60	600	3	43.75	CXI1260F643	CXIT1260F643	CXI1260F643R	CXIT1260F643R	CXI1260F643X	CXIT1260F643X
72	480	3	51.25	CXI1272F651	CXIT1272F651	CXI1272F651R	CXIT1272F651R	CXI1272F651X	CXIT1272F651X
72	600	3	51.25	CXI1272F651	CXIT1272F651	CXI1272F651R	CXIT1272F651R	CXI1272F651X	CXIT1272F651X

## 6" - 150 LB

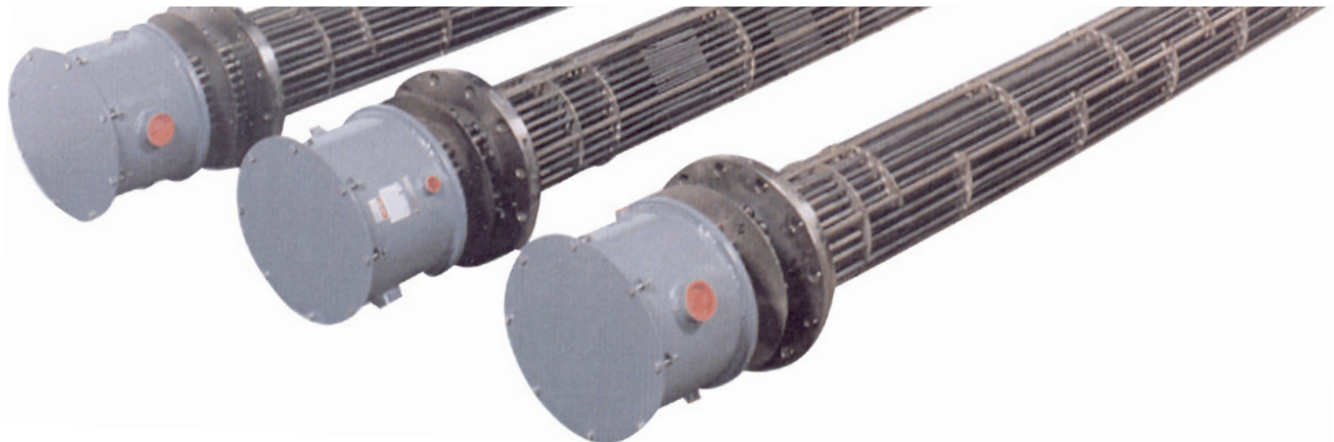
STEEL FLANGE / INCOLOY ELEMENTS | 50 WATTS/IN<sup>2</sup> | 18 ELEMENT

Kilo-Watt	Voltage	Phase	B Dim	General Purpose Terminal Box		NEMA 4 Terminal Box		Explosion Proof Terminal Box	
				No t/stat	50 - 250°F t/stat	No t/stat	50 - 250°F t/stat	No t/stat	50 - 250°F t/stat
36	480	3	21.5	CXI1836F621	CXIT1836F621	CXI1836F621R	CXIT1836F621R	CXI1836F621X	CXIT1836F621X
36	600	3	21.5	CXI1836F621	CXIT1836F621	CXI1836F621R	CXIT1836F621R	CXI1836F621X	CXIT1836F621X
45	480	3	25.25	CXI1845F625	CXIT1845F625	CXI1845F625R	CXIT1845F625R	CXI1845F625X	CXIT1845F625X
45	600	3	25.25	CXI1845F625	CXIT1845F625	CXI1845F625R	CXIT1845F625R	CXI1845F625X	CXIT1845F625X
54	480	3	29	CXI1854F629	CXIT1854F629	CXI1854F629R	CXIT1854F629R	CXI1854F629X	CXIT1854F629X
54	600	3	29	CXI1854F629	CXIT1854F629	CXI1854F629R	CXIT1854F629R	CXI1854F629X	CXIT1854F629X
72	480	3	36.25	CXI1872F636	CXIT1872F636	CXI1872F636R	CXIT1872F636R	CXI1872F636X	CXIT1872F636X
72	600	3	36.25	CXI1872F636	CXIT1872F636	CXI1872F636R	CXIT1872F636R	CXI1872F636X	CXIT1872F636X
90	480	3	43.75	CXI1890F643	CXIT1890F643	CXI1890F643R	CXIT1890F643R	CXI1890F643X	CXIT1890F643X
90	600	3	43.75	CXI1890F643	CXIT1890F643	CXI1890F643R	CXIT1890F643R	CXI1890F643X	CXIT1890F643X
108	480	3	51.25	CXI18108F651	CXIT18108F651	CXI18108F651R	CXIT18108F651R	CXI18108F651X	CXIT18108F651X
108	600	3	51.25	CXI18108F651	CXIT18108F651	CXI18108F651R	CXIT18108F651R	CXI18108F651X	CXIT18108F651X

## 6" - 150 LB

STEEL FLANGE / INCOLOY ELEMENTS | 23 WATTS/IN<sup>2</sup> | 12 ELEMENT

Kilo-Watt	Voltage	Phase	B Dim	General Purpose Terminal Box		NEMA 4 Terminal Box		Explosion Proof Terminal Box	
				No t/stat	50 - 250°F t/stat	No t/stat	50 - 250°F t/stat	No t/stat	50 - 250°F t/stat
12	480	3	22.75	CXF1212F622	CXFT1212F622	CXF1212F622R	CXFT1212F622R	CXF1212F622X	CXFT1212F622X
12	600	3	22.75	CXF1212F622	CXFT1212F622	CXF1212F622R	CXFT1212F622R	CXF1212F622X	CXFT1212F622X
18	480	3	31	CXF1218F631	CXFT1218F631	CXF1218F631R	CXFT1218F631R	CXF1218F631X	CXFT1218F631X
18	600	3	31	CXF1218F631	CXFT1218F631	CXF1218F631R	CXFT1218F631R	CXF1218F631X	CXFT1218F631X
24	480	3	39	CXF1224F639	CXFT1224F639	CXF1224F639R	CXFT1224F639R	CXF1224F639X	CXFT1236F639X
24	600	3	39	CXF1224F639	CXFT1224F639	CXF1224F639R	CXFT1224F639R	CXF1224F639X	CXFT1224F639X
30	480	3	47	CXF1230F647	CXFT1230F647	CXF1230F647R	CXFT1230F647R	CXF1230F647X	CXFT1230F647X
30	600	3	47	CXF1230F647	CXFT1230F647	CXF1230F647R	CXFT1230F647R	CXF1230F647X	CXFT1230F647X
36	480	3	55	CXF1236F655	CXFT1236F655	CXF1236F655R	CXFT1236F655R	CXF1236F655X	CXFT1236F655X
36	600	3	55	CXF1236F655	CXFT1236F655	CXF1236F655R	CXFT1236F655R	CXF1236F655X	CXFT1236F655X
48	480	3	71	CXF1248F671	CXFT1248F671	CXF1248F671R	CXFT1248F671R	CXF1248F671X	CXFT1248F671X
48	600	3	71	CXF1248F671	CXFT1248F671	CXF1248F671R	CXFT1248F671R	CXF1248F671X	CXFT1248F671X



### 6" - 150 LB

STEEL FLANGE / INCOLOY ELEMENTS | 23 WATTS/IN<sup>2</sup> | 15 ELEMENT

Kilo-Watt	Voltage	Phase	B Dim	General Purpose Terminal Box		NEMA 4 Terminal Box		Explosion Proof Terminal Box	
				No t/stat	50 - 250°F t/stat	No t/stat	50 - 250°F t/stat	No t/stat	50 - 250°F t/stat
15	480	3	22.75	CXF1515F622	CXFT1515F622	CXF1515F622R	CXFT1515F622R	CXF1515F622X	CXFT1515F622X
15	600	3	22.75	CXF1515F622	CXFT1515F622	CXF1515F622R	CXFT1515F622R	CXF1515F622X	CXFT1515F622X
22.5	480	3	31	CXF1522F631	CXFT1522F631	CXF1522F631R	CXFT1522F631R	CXF1522F631X	CXFT1522F631X
22.5	600	3	31	CXF1522F631	CXFT1522F631	CXF1522F631R	CXFT1522F631R	CXF1522F631X	CXFT1522F631X
30	480	3	39	CXF1530F639	CXFT1530F639	CXF1530F639R	CXFT1530F639R	CXF1530F639X	CXFT1530F639X
30	600	3	39	CXF1530F639	CXFT1530F639	CXF1530F639R	CXFT1530F639R	CXF1530F639X	CXFT1530F639X
37.5	480	3	47	CXF1537F647	CXFT1537F647	CXF1537F647R	CXFT1537F647R	CXF1537F647X	CXFT1537F647X
37.5	600	3	47	CXF1537F647	CXFT1537F647	CXF1537F647R	CXFT1537F647R	CXF1537F647X	CXFT1537F647X
45	480	3	55	CXF1545F655	CXFT1545F655	CXF1545F655R	CXFT1545F655R	CXF1545F655X	CXFT1545F655X
45	600	3	55	CXF1545F655	CXFT1545F655	CXF1545F655R	CXFT1545F655R	CXF1545F655X	CXFT1545F655X
60	480	3	71	CXF1560F671	CXFT1560F671	CXF1560F671R	CXFT1560F671R	CXF1560F671X	CXFT1560F671X
60	600	3	71	CXF1560F671	CXFT1560F671	CXF1560F671R	CXFT1560F671R	CXF1560F671X	CXFT1560F671X

### 6" - 150 LB

STEEL FLANGE / INCOLOY ELEMENTS | 23 WATTS/IN<sup>2</sup> | 18 ELEMENT

Kilo-Watt	Voltage	Phase	B Dim	General Purpose Terminal Box		NEMA 4 Terminal Box		Explosion Proof Terminal Box	
				No t/stat	50 - 250°F t/stat	No t/stat	50 - 250°F t/stat	No t/stat	50 - 250°F t/stat
18	480	3	22.75	CXF1818F622	CXFT1818F622	CXF1818F622R	CXFT1818F622R	CXF1818F622X	CXFT1818F622X
18	600	3	22.75	CXF1818F622	CXFT1818F622	CXF1818F622R	CXFT1818F622R	CXF1818F622X	CXFT1818F622X
27	480	3	31	CXF1827F631	CXFT1827F631	CXF1827F631R	CXFT1827F631R	CXF1827F631X	CXFT1827F631X
27	600	3	31	CXF1827F631	CXFT1827F631	CXF1827F631R	CXFT1827F631R	CXF1827F631X	CXFT1827F631X
36	480	3	39	CXF1836F639	CXFT1836F639	CXF1836F639R	CXFT1836F639R	CXF1836F639X	CXFT1836F639X
36	600	3	39	CXF1836F639	CXFT1836F639	CXF1836F639R	CXFT1836F639R	CXF1836F639X	CXFT1836F639X
45	480	3	47	CXF1845F647	CXFT1845F647	CXF1845F647R	CXFT1845F647R	CXF1845F647X	CXFT1845F647X
45	600	3	47	CXF1845F647	CXFT1845F647	CXF1845F647R	CXFT1845F647R	CXF1845F647X	CXFT1845F647X
54	480	3	55	CXF1854F655	CXFT1854F655	CXF1854F655R	CXFT1854F655R	CXF1854F655X	CXFT1854F655X
54	600	3	55	CXF1854F655	CXFT1854F655	CXF1854F655R	CXFT1854F655R	CXF1854F655X	CXFT1854F655X
72	480	3	71	CXF1872F671	CXFT1872F671	CXF1872F671R	CXFT1872F671R	CXF1872F671X	CXFT1872F671X
72	600	3	71	CXF1872F671	CXFT1872F671	CXF1872F671R	CXFT1872F671R	CXF1872F671X	CXFT1872F671X

### 6" - 150 LB

STEEL FLANGE / INCOLOY ELEMENTS | 15 WATTS/IN<sup>2</sup> | 12 ELEMENT

Kilo-Watt	Voltage	Phase	B Dim	General Purpose Terminal Box		NEMA 4 Terminal Box		Explosion Proof Terminal Box	
				No t/stat	50 - 250°F t/stat	No t/stat	50 - 250°F t/stat	No t/stat	50 - 250°F t/stat
12	480	3	31.5	CXF1212F631	CXFT1212F631	CXF1212F631R	CXFT1212F631R	CXF1212F631X	CXFT1212F631X
12	600	3	31.5	CXF1212F631	CXFT1212F631	CXF1212F631R	CXFT1212F631R	CXF1212F631X	CXFT1212F631X
18	480	3	43.75	CXF1218F643	CXFT1218F643	CXF1218F643R	CXFT1218F643R	CXF1218F643X	CXFT1218F643X
18	600	3	43.75	CXF1218F643	CXFT1218F643	CXF1218F643R	CXFT1218F643R	CXF1218F643X	CXFT1218F643X
24	480	3	56	CXF1224F656	CXFT1224F656	CXF1224F656R	CXFT1224F656R	CXF1224F656X	CXFT1236F656X
24	600	3	56	CXF1224F656	CXFT1224F656	CXF1224F656R	CXFT1224F656R	CXF1224F656X	CXFT1224F656X
30	480	3	68.5	CXF1230F668	CXFT1230F668	CXF1230F668R	CXFT1230F668R	CXF1230F668X	CXFT1230F668X
30	600	3	68.5	CXF1230F668	CXFT1230F668	CXF1230F668R	CXFT1230F668R	CXF1230F668X	CXFT1230F668X

## 6" - 150 LB

STEEL FLANGE / INCOLOY ELEMENTS | 15 WATTS/IN<sup>2</sup> | 15 ELEMENT

Kilo-Watt	Voltage	Phase	B Dim	General Purpose Terminal Box		NEMA 4 Terminal Box		Explosion Proof Terminal Box	
				No t/stat	50 - 250°F t/stat	No t/stat	50 - 250°F t/stat	No t/stat	50 - 250°F t/stat
15	480	3	31.5	CXF1515F631	CXFT1515F631	CXF1515F631R	CXFT1515F631R	CXF1515F631X	CXFT1515F631X
15	600	3	31.5	CXF1515F631	CXFT1515F631	CXF1515F631R	CXFT1515F631R	CXF1515F631X	CXFT1515F631X
22.5	480	3	43.75	CXF1522F643	CXFT1522F643	CXF1522F643R	CXFT1522F643R	CXF1522F643X	CXFT1522F643X
22.5	600	3	43.75	CXF1522F643	CXFT1522F643	CXF1522F643R	CXFT1522F643R	CXF1522F643X	CXFT1522F643X
30	480	3	56	CXF1530F656	CXFT1530F656	CXF1530F656R	CXFT1530F656R	CXF1530F656X	CXFT1530F656X
30	600	3	56	CXF1530F656	CXFT1530F656	CXF1530F656R	CXFT1530F656R	CXF1530F656X	CXFT1530F656X
37.5	480	3	68.5	CXF1537F668	CXFT1537F668	CXF1537F668R	CXFT1537F668R	CXF1537F668X	CXFT1537F668X
37.5	600	3	68.5	CXF1537F668	CXFT1537F668	CXF1537F668R	CXFT1537F668R	CXF1537F668X	CXFT1537F668X

## 6" - 150 LB

STEEL FLANGE / INCOLOY ELEMENTS | 15 WATTS/IN<sup>2</sup> | 18 ELEMENT

Kilo-Watt	Voltage	Phase	B Dim	General Purpose Terminal Box		NEMA 4 Terminal Box		Explosion Proof Terminal Box	
				No t/stat	50 - 250°F t/stat	No t/stat	50 - 250°F t/stat	No t/stat	50 - 250°F t/stat
18	480	3	31.5	CXF1818F631	CXFT1818F631	CXF1818F631R	CXFT1818F631R	CXF1818F631X	CXFT1818F631X
18	600	3	31.5	CXF1818F631	CXFT1818F631	CXF1818F631R	CXFT1818F631R	CXF1818F631X	CXFT1818F631X
27	480	3	43.75	CXF1827F643	CXFT1827F643	CXF1827F643R	CXFT1827F643R	CXF1827F643X	CXFT1827F643X
27	600	3	43.75	CXF1827F643	CXFT1827F643	CXF1827F643R	CXFT1827F643R	CXF1827F643X	CXFT1827F643X
36	480	3	56	CXF1836F656	CXFT1836F656	CXF1836F656R	CXFT1836F656R	CXF1836F656X	CXFT1836F656X
36	600	3	56	CXF1836F656	CXFT1836F656	CXF1836F656R	CXFT1836F656R	CXF1836F656X	CXFT1836F656X
45	480	3	68.5	CXF1845F668	CXFT1845F668	CXF1845F668R	CXFT1845F668R	CXF1845F668X	CXFT1845F668X
45	600	3	68.5	CXF1845F668	CXFT1845F668	CXF1845F668R	CXFT1845F668R	CXF1845F668X	CXFT1845F668X

## 8" FLANGE HEATERS

### 8" - 150 LB

STEEL FLANGE / INCOLOY ELEMENTS | 50 WATTS/IN<sup>2</sup> | 18 ELEMENT

Kilo-Watt	Voltage	Phase	B Dim	General Purpose Terminal Box		NEMA 4 Terminal Box		Explosion Proof Terminal Box	
				No t/stat	50 - 250°F t/stat	No t/stat	50 - 250°F t/stat	No t/stat	50 - 250°F t/stat
36	480	3	21.5	CXI1836F82I	CXIT1836F82I	CXI1836F82IR	CXIT1836F82IR	CXI1836F82IX	CXIT1836F82IX
36	600	3	21.5	CXI1836F82I	CXIT1836F82I	CXI1836F82IR	CXIT1836F82IR	CXI1836F82IX	CXIT1836F82IX
45	480	3	25	CXI1845F825	CXIT1845F825	CXI1845F825R	CXIT1845F825R	CXI1845F825X	CXIT1845F825X
45	600	3	25	CXI1845F825	CXIT1845F825	CXI1845F825R	CXIT1845F825R	CXI1845F825X	CXIT1845F825X
54	480	3	28.75	CXI1854F828	CXIT1854F828	CXI1854F828R	CXIT1854F828R	CXI1854F828X	CXIT1854F828X
54	600	3	28.75	CXI1854F828	CXIT1854F828	CXI1854F828R	CXIT1854F828R	CXI1854F828X	CXIT1854F828X
72	480	3	36.25	CXI1872F836	CXIT1872F836	CXI1872F836R	CXIT1872F836R	CXI1872F836X	CXIT1872F836X
72	600	3	36.25	CXI1872F836	CXIT1872F836	CXI1872F836R	CXIT1872F836R	CXI1872F836X	CXIT1872F836X
90	480	3	43.5	CXI1890F843	CXIT1890F843	CXI1890F843R	CXIT1890F843R	CXI1890F843X	CXIT1890F843X
90	600	3	43.5	CXI1890F843	CXIT1890F843	CXI1890F843R	CXIT1890F843R	CXI1890F843X	CXIT1890F843X
108	480	3	51	CXI18108F85I	CXIT18108F85I	CXI18108F85IR	CXIT18108F85IR	CXI18108F85IX	CXIT18108F85IX
108	600	3	51	CXI18108F85I	CXIT18108F85I	CXI18108F85IR	CXIT18108F85IR	CXI18108F85IX	CXIT18108F85IX

### 8" - 150 LB

STEEL FLANGE / INCOLOY ELEMENTS | 50 WATTS/IN<sup>2</sup> | 21 ELEMENT

Kilo-Watt	Voltage	Phase	B Dim	General Purpose Terminal Box		NEMA 4 Terminal Box		Explosion Proof Terminal Box	
				No t/stat	50 - 250°F t/stat	No t/stat	50 - 250°F t/stat	No t/stat	50 - 250°F t/stat
42	480	3	21.5	CXI2142F82I	CXIT2142F82I	CXI2142F82IR	CXIT2142F82IR	CXI2142F82IX	CXIT2142F82IX
42	600	3	21.5	CXI2142F82I	CXIT2142F82I	CXI2142F82IR	CXIT2142F82IR	CXI2142F82IX	CXIT2142F82IX
52.5	480	3	25	CXI2152F825	CXIT2152F825	CXI2152F825R	CXIT2152F825R	CXI2152F825X	CXIT2152F825X
52.5	600	3	25	CXI2152F825	CXIT2152F825	CXI2152F825R	CXIT2152F825R	CXI2152F825X	CXIT2152F825X
63	480	3	28.75	CXI2163F828	CXIT2163F828	CXI2163F828R	CXIT2163F828R	CXI2163F828X	CXIT2163F828X
63	600	3	28.75	CXI2163F828	CXIT2163F828	CXI2163F828R	CXIT2163F828R	CXI2163F828X	CXIT2163F828X
84	480	3	36.25	CXI2184F836	CXIT2184F836	CXI2184F836R	CXIT2184F836R	CXI2184F836X	CXIT2184F836X
84	600	3	36.25	CXI2184F836	CXIT2184F836	CXI2184F836R	CXIT2184F836R	CXI2184F836X	CXIT2184F836X
105	480	3	43.5	CXI21105F843	CXIT21105F843	CXI21105F843R	CXIT21105F843R	CXI21105F843X	CXIT21105F843X
105	600	3	43.5	CXI21105F843	CXIT21105F843	CXI21105F843R	CXIT21105F843R	CXI21105F843X	CXIT21105F843X
126	480	3	51	CXI21126F85I	CXIT21126F85I	CXI21126F85IR	CXIT21126F85IR	CXI21126F85IX	CXIT21126F85IX
126	600	3	51	CXI21126F85I	CXIT21126F85I	CXI21126F85IR	CXIT21126F85IR	CXI21126F85IX	CXIT21126F85IX

## 8" - 150 LB

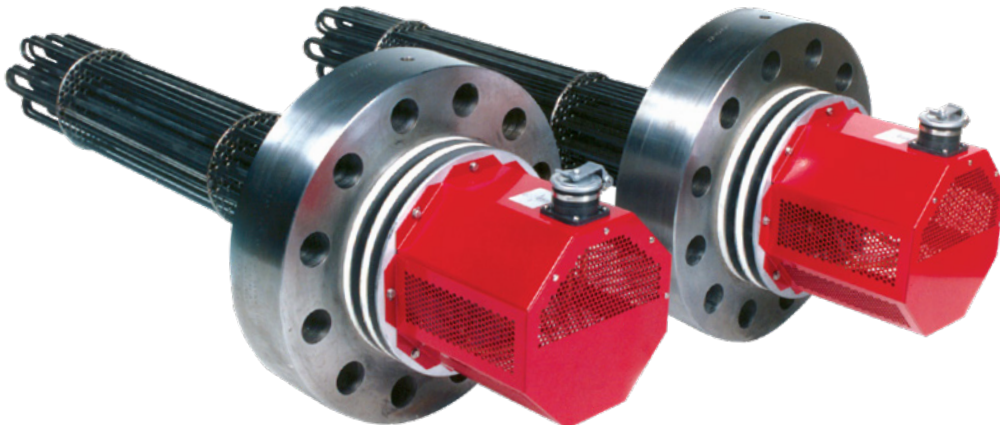
STEEL FLANGE / INCOLOY ELEMENTS | 50 WATTS/IN<sup>2</sup> | 27 ELEMENT

Kilo-Watt	Voltage	Phase	B Dim	General Purpose Terminal Box		NEMA 4 Terminal Box		Explosion Proof Terminal Box	
				No t/stat	50 - 250°F t/stat	No t/stat	50 - 250°F t/stat	No t/stat	50 - 250°F t/stat
54	480	3	21.5	CXI2754F821	CXIT2754F821	CXI2754F821R	CXIT2754F821R	CXI2754F821X	CXIT2754F821X
54	600	3	21.5	CXI2754F821	CXIT2754F821	CXI2754F821R	CXIT2754F821R	CXI2754F821X	CXIT2754F821X
67.5	480	3	25	CXI2767F825	CXIT2767F825	CXI2767F825R	CXIT2767F825R	CXI2767F825X	CXIT2767F825X
67.5	600	3	25	CXI2767F825	CXIT2767F825	CXI2767F825R	CXIT2767F825R	CXI2767F825X	CXIT2767F825X
81	480	3	28.75	CXI2781F828	CXIT2781F828	CXI2781F828R	CXIT2781F828R	CXI2781F828X	CXIT2781F828X
81	600	3	28.75	CXI2781F828	CXIT2781F828	CXI2781F828R	CXIT2781F828R	CXI2781F828X	CXIT2781F828X
108	480	3	36.25	CXI27108F836	CXIT27108F836	CXI27108F836R	CXIT27108F836R	CXI27108F836X	CXIT27108F836X
108	600	3	36.25	CXI27108F836	CXIT27108F836	CXI27108F836R	CXIT27108F836R	CXI27108F836X	CXIT27108F836X
135	480	3	43.5	CXI27135F843	CXIT27135F843	CXI27135F843R	CXIT27135F843R	CXI27135F843X	CXIT27135F843X
135	600	3	43.5	CXI27135F843	CXIT27135F843	CXI27135F843R	CXIT27135F843R	CXI27135F843X	CXIT27135F843X
162	480	3	51	CXI27162F851	CXIT27162F851	CXI27162F851R	CXIT27162F851R	CXI27162F851X	CXIT27162F851X
162	600	3	51	CXI27162F851	CXIT27162F851	CXI27162F851R	CXIT27162F851R	CXI27162F851X	CXIT27162F851X

## 8" - 150 LB

STEEL FLANGE / INCOLOY ELEMENTS | 50 WATTS/IN<sup>2</sup> | 30 ELEMENT

Kilo-Watt	Voltage	Phase	B Dim	General Purpose Terminal Box		NEMA 4 Terminal Box		Explosion Proof Terminal Box	
				No t/stat	50 - 250°F t/stat	No t/stat	50 - 250°F t/stat	No t/stat	50 - 250°F t/stat
60	480	3	21.5	CXI3060F821	CXIT3060F821	CXI3060F821R	CXIT3060F821R	CXI3060F821X	CXIT3060F821X
60	600	3	21.5	CXI3060F821	CXIT3060F821	CXI3060F821R	CXIT3060F821R	CXI3060F821X	CXIT3060F821X
75	480	3	25	CXI3075F825	CXIT3075F825	CXI3075F825R	CXIT3075F825R	CXI3075F825X	CXIT3075F825X
75	600	3	25	CXI3075F825	CXIT3075F825	CXI3075F825R	CXIT3075F825R	CXI3075F825X	CXIT3075F825X
90	480	3	28.75	CXI3090F828	CXIT3090F828	CXI3090F828R	CXIT3090F828R	CXI3090F828X	CXIT3090F828X
90	600	3	28.75	CXI3090F828	CXIT3090F828	CXI3090F828R	CXIT3090F828R	CXI3090F828X	CXIT3090F828X
120	480	3	36.25	CXI30120F836	CXIT30120F836	CXI30120F836R	CXIT30120F836R	CXI30120F836X	CXIT30120F836X
120	600	3	36.25	CXI30120F836	CXIT30120F836	CXI30120F836R	CXIT30120F836R	CXI30120F836X	CXIT30120F836X
150	480	3	43.5	CXI30150F843	CXIT30150F843	CXI30150F843R	CXIT30150F843R	CXI30150F843X	CXIT30150F843X
150	600	3	43.5	CXI30150F843	CXIT30150F843	CXI30150F843R	CXIT30150F843R	CXI30150F843X	CXIT30150F843X
180	480	3	51	CXI30180F851	CXIT30180F851	CXI30180F851R	CXIT30180F851R	CXI30180F851X	CXIT30180F851X
180	600	3	51	CXI30180F851	CXIT30180F851	CXI30180F851R	CXIT30180F851R	CXI30180F851X	CXIT30180F851X



### 8" - 150 LB

STEEL FLANGE / INCOLOY ELEMENTS | 23 WATTS/IN<sup>2</sup> | 18 ELEMENT

Kilo-Watt	Voltage	Phase	B Dim	General Purpose Terminal Box		NEMA 4 Terminal Box		Explosion Proof Terminal Box	
				No t/stat	50 - 250°F t/stat	No t/stat	50 - 250°F t/stat	No t/stat	50 - 250°F t/stat
18	480	3	22.75	CXF1818F822	CXFT1818F822	CXF1818F822R	CXFT1818F822R	CXF1818F822X	CXFT1818F822X
18	600	3	22.75	CXF1818F822	CXFT1818F822	CXF1818F822R	CXFT1818F822R	CXF1818F822X	CXFT1818F822X
27	480	3	30.75	CXF1827F830	CXFT1827F830	CXF1827F830R	CXFT1827F830R	CXF1827F830X	CXFT1827F830X
27	600	3	30.75	CXF1827F830	CXFT1827F830	CXF1827F830R	CXFT1827F830R	CXF1827F830X	CXFT1827F830X
36	480	3	38.75	CXF1836F838	CXFT1836F838	CXF1836F838R	CXFT1836F838R	CXF1836F838X	CXFT1836F838X
36	600	3	38.75	CXF1836F838	CXFT1836F838	CXF1836F838R	CXFT1836F838R	CXF1836F838X	CXFT1836F838X
45	480	3	46.75	CXF1845F846	CXFT1845F846	CXF1845F846R	CXFT1845F846R	CXF1845F846X	CXFT1845F846X
45	600	3	46.75	CXF1845F846	CXFT1845F846	CXF1845F846R	CXFT1845F846R	CXF1845F846X	CXFT1845F846X
54	480	3	55	CXF1854F855	CXFT1854F855	CXF1854F855R	CXFT1854F855R	CXF1854F855X	CXFT1854F855X
54	600	3	55	CXF1854F855	CXFT1854F855	CXF1854F855R	CXFT1854F855R	CXF1854F855X	CXFT1854F855X
72	480	3	71	CXF1872F871	CXFT1872F871	CXF1872F871R	CXFT1872F871R	CXF1872F871X	CXFT1872F871X
72	600	3	71	CXF1872F871	CXFT1872F871	CXF1872F871R	CXFT1872F871R	CXF1872F871X	CXFT1872F871X

### 8" - 150 LB

STEEL FLANGE / INCOLOY ELEMENTS | 23 WATTS/IN<sup>2</sup> | 21 ELEMENT

Kilo-Watt	Voltage	Phase	B Dim	General Purpose Terminal Box		NEMA 4 Terminal Box		Explosion Proof Terminal Box	
				No t/stat	50 - 250°F t/stat	No t/stat	50 - 250°F t/stat	No t/stat	50 - 250°F t/stat
21	480	3	22.75	CXF2121F822	CXFT2121F822	CXF2121F822R	CXFT2121F822R	CXF2121F822X	CXFT2121F822X
21	600	3	22.75	CXF2121F822	CXFT2121F822	CXF2121F822R	CXFT2121F822R	CXF2121F822X	CXFT2121F822X
31.5	480	3	30.75	CXF2131F830	CXFT2131F830	CXF2131F830R	CXFT2131F830R	CXF2131F830X	CXFT2131F830X
31.5	600	3	30.75	CXF2131F830	CXFT2131F830	CXF2131F830R	CXFT2131F830R	CXF2131F830X	CXFT2131F830X
42	480	3	38.75	CXF2142F838	CXFT2142F838	CXF2142F838R	CXFT2142F838R	CXF2142F838X	CXFT2142F838X
42	600	3	38.75	CXF2142F838	CXFT2142F838	CXF2142F838R	CXFT2142F838R	CXF2142F838X	CXFT2142F838X
52.5	480	3	46.75	CXF2152F846	CXFT2152F846	CXF2152F846R	CXFT2152F846R	CXF2152F846X	CXFT2152F846X
52.5	600	3	46.75	CXF2152F846	CXFT2152F846	CXF2152F846R	CXFT2152F846R	CXF2152F846X	CXFT2152F846X
63	480	3	55	CXF2163F855	CXFT2163F855	CXF2163F855R	CXFT2163F855R	CXF2163F855X	CXFT2163F855X
63	600	3	55	CXF2163F855	CXFT2163F855	CXF2163F855R	CXFT2163F855R	CXF2163F855X	CXFT2163F855X
84	480	3	71	CXF2184F871	CXFT2184F871	CXF2184F871R	CXFT2184F871R	CXF2184F871X	CXFT2184F871X
84	600	3	71	CXF2184F871	CXFT2184F871	CXF2184F871R	CXFT2184F871R	CXF2184F871X	CXFT2184F871X

### 8" - 150 LB

STEEL FLANGE / INCOLOY ELEMENTS | 23 WATTS/IN<sup>2</sup> | 24 ELEMENT

Kilo-Watt	Voltage	Phase	B Dim	General Purpose Terminal Box		NEMA 4 Terminal Box		Explosion Proof Terminal Box	
				No t/stat	50 - 250°F t/stat	No t/stat	50 - 250°F t/stat	No t/stat	50 - 250°F t/stat
24	480	3	22.75	CXF2424F822	CXFT2424F822	CXF2424F822R	CXFT2424F822R	CXF2424F822X	CXFT2424F822X
24	600	3	22.75	CXF2424F822	CXFT2424F822	CXF2424F822R	CXFT2424F822R	CXF2424F822X	CXFT2424F822X
36	480	3	30.75	CXF2436F830	CXFT2436F830	CXF2436F830R	CXFT2436F830R	CXF2436F830X	CXFT2436F830X
36	600	3	30.75	CXF2436F830	CXFT2436F830	CXF2436F830R	CXFT2436F830R	CXF2436F830X	CXFT2436F830X
48	480	3	38.75	CXF2448F838	CXFT2448F838	CXF2448F838R	CXFT2448F838R	CXF2448F838X	CXFT2448F838X
48	600	3	38.75	CXF2448F838	CXFT2448F838	CXF2448F838R	CXFT2448F838R	CXF2448F838X	CXFT2448F838X
60	480	3	46.75	CXF2460F846	CXFT2460F846	CXF2460F846R	CXFT2460F846R	CXF2460F846X	CXFT2460F846X
60	600	3	46.75	CXF2460F846	CXFT2460F846	CXF2460F846R	CXFT2460F846R	CXF2460F846X	CXFT2460F846X
72	480	3	55	CXF2472F855	CXFT2472F855	CXF2472F855R	CXFT2472F855R	CXF2472F855X	CXFT2472F855X
72	600	3	55	CXF2472F855	CXFT2472F855	CXF2472F855R	CXFT2472F855R	CXF2472F855X	CXFT2472F855X
96	480	3	71	CXF2496F871	CXFT2496F871	CXF2496F871R	CXFT2496F871R	CXF2496F871X	CXFT2496F871X
96	600	3	71	CXF2496F871	CXFT2496F871	CXF2496F871R	CXFT2496F871R	CXF2496F871X	CXFT2496F871X

### 8" - 150 LB

STEEL FLANGE / INCOLOY ELEMENTS | 23 WATTS/IN<sup>2</sup> | 27 ELEMENT

Kilo-Watt	Voltage	Phase	B Dim	General Purpose Terminal Box		NEMA 4 Terminal Box		Explosion Proof Terminal Box	
				No t/stat	50 - 250°F t/stat	No t/stat	50 - 250°F t/stat	No t/stat	50 - 250°F t/stat
27	480	3	22.75	CXF2727F822	CXFT2727F822	CXF2727F822R	CXFT2727F822R	CXF2727F822X	CXFT2727F822X
27	600	3	22.75	CXF2727F822	CXFT2727F822	CXF2727F822R	CXFT2727F822R	CXF2727F822X	CXFT2727F822X
40.5	480	3	30.75	CXF2740F830	CXFT2740F830	CXF2740F830R	CXFT2740F830R	CXF2740F830X	CXFT2740F830X
40.5	600	3	30.75	CXF2740F830	CXFT2740F830	CXF2740F830R	CXFT2740F830R	CXF2740F830X	CXFT2740F830X
54	480	3	38.75	CXF2754F838	CXFT2754F838	CXF2754F838R	CXFT2754F838R	CXF2754F838X	CXFT2754F838X
54	600	3	38.75	CXF2754F838	CXFT2754F838	CXF2754F838R	CXFT2754F838R	CXF2754F838X	CXFT2754F838X
67.5	480	3	46.75	CXF2767F846	CXFT2767F846	CXF2767F846R	CXFT2767F846R	CXF2767F846X	CXFT2767F846X
67.5	600	3	46.75	CXF2767F846	CXFT2767F846	CXF2767F846R	CXFT2767F846R	CXF2767F846X	CXFT2767F846X
81	480	3	55	CXF2781F855	CXFT2781F855	CXF2781F855R	CXFT2781F855R	CXF2781F855X	CXFT2781F855X
81	600	3	55	CXF2781F855	CXFT2781F855	CXF2781F855R	CXFT2781F855R	CXF2781F855X	CXFT2781F855X
108	480	3	71	CXF27108F871	CXFT27108F871	CXF27108F871R	CXFT27108F871R	CXF27108F871X	CXFT27108F871X
108	600	3	71	CXF27108F871	CXFT27108F871	CXF27108F871R	CXFT27108F871R	CXF27108F871X	CXFT27108F871X

### 8" - 150 LB

STEEL FLANGE / INCOLOY ELEMENTS | 23 WATTS/IN<sup>2</sup> | 30 ELEMENT

Kilo-Watt	Voltage	Phase	B Dim	General Purpose Terminal Box		NEMA 4 Terminal Box		Explosion Proof Terminal Box	
				No t/stat	50 - 250°F t/stat	No t/stat	50 - 250°F t/stat	No t/stat	50 - 250°F t/stat
30	480	3	22.75	CXF3030F822	CXFT3030F822	CXF3030F822R	CXFT3030F822R	CXF3030F822X	CXFT3030F822X
30	600	3	22.75	CXF3030F822	CXFT3030F822	CXF3030F822R	CXFT3030F822R	CXF3030F822X	CXFT3030F822X
45	480	3	30.75	CXF3045F830	CXFT3045F830	CXF3045F830R	CXFT3045F830R	CXF3045F830X	CXFT3045F830X
45	600	3	30.75	CXF3045F830	CXFT3045F830	CXF3045F830R	CXFT3045F830R	CXF3045F830X	CXFT3045F830X
60	480	3	38.75	CXF3060F838	CXFT3060F838	CXF3060F838R	CXFT3060F838R	CXF3060F838X	CXFT3060F838X
60	600	3	38.75	CXF3060F838	CXFT3060F838	CXF3060F838R	CXFT3060F838R	CXF3060F838X	CXFT3060F838X
75	480	3	46.75	CXF3075F846	CXFT3075F846	CXF3075F846R	CXFT3075F846R	CXF3075F846X	CXFT3075F846X
75	600	3	46.75	CXF3075F846	CXFT3075F846	CXF3075F846R	CXFT3075F846R	CXF3075F846X	CXFT3075F846X
90	480	3	55	CXF3090F855	CXFT3090F855	CXF3090F855R	CXFT3090F855R	CXF3090F855X	CXFT3090F855X
90	600	3	55	CXF3090F855	CXFT3090F855	CXF3090F855R	CXFT3090F855R	CXF3090F855X	CXFT3090F855X
120	480	3	71	CXF30120F871	CXFT30120F871	CXF30120F871R	CXFT30120F871R	CXF30120F871X	CXFT30120F871X
120	600	3	71	CXF30120F871	CXFT30120F871	CXF30120F871R	CXFT30120F871R	CXF30120F871X	CXFT30120F871X

### 8" - 150 LB

STEEL FLANGE / INCOLOY ELEMENTS | 15 WATTS/IN<sup>2</sup> | 18 ELEMENT

Kilo-Watt	Voltage	Phase	B Dim	General Purpose Terminal Box		NEMA 4 Terminal Box		Explosion Proof Terminal Box	
				No t/stat	50 - 250°F t/stat	No t/stat	50 - 250°F t/stat	No t/stat	50 - 250°F t/stat
18	480	3	31.25	CXF1818F831	CXFT1818F831	CXF1818F831R	CXFT1818F831R	CXF1818F831X	CXFT1818F831X
18	600	3	31.25	CXF1818F831	CXFT1818F831	CXF1818F831R	CXFT1818F831R	CXF1818F831X	CXFT1818F831X
27	480	3	43.5	CXF1827F843	CXFT1827F843	CXF1827F843R	CXFT1827F843R	CXF1827F843X	CXFT1827F843X
27	600	3	43.5	CXF1827F843	CXFT1827F843	CXF1827F843R	CXFT1827F843R	CXF1827F843X	CXFT1827F843X
36	480	3	56	CXF1836F856	CXFT1836F856	CXF1836F856R	CXFT1836F856R	CXF1836F856X	CXFT1836F856X
36	600	3	56	CXF1836F856	CXFT1836F856	CXF1836F856R	CXFT1836F856R	CXF1836F856X	CXFT1836F856X
45	480	3	68.25	CXF1845F868	CXFT1845F868	CXF1845F868R	CXFT1845F868R	CXF1845F868X	CXFT1845F868X
45	600	3	68.25	CXF1845F868	CXFT1845F868	CXF1845F868R	CXFT1845F868R	CXF1845F868X	CXFT1845F868X



### 8" - 150 LB

STEEL FLANGE / INCOLOY ELEMENTS | 15 WATTS/IN<sup>2</sup> | 24 ELEMENT

Kilo-Watt	Voltage	Phase	B Dim	General Purpose Terminal Box		NEMA 4 Terminal Box		Explosion Proof Terminal Box	
				No t/stat	50 - 250°F t/stat	No t/stat	50 - 250°F t/stat	No t/stat	50 - 250°F t/stat
24	480	3	31.25	CXF2424F831	CXFT2424F831	CXF2424F831R	CXFT2424F831R	CXF2424F831X	CXFT2424F831X
24	600	3	31.25	CXF2424F831	CXFT2424F831	CXF2424F831R	CXFT2424F831R	CXF2424F831X	CXFT2424F831X
36	480	3	43.5	CXF2436F843	CXFT2436F843	CXF2436F843R	CXFT2436F843R	CXF2436F843X	CXFT2436F843X
36	600	3	43.5	CXF2436F843	CXFT2436F843	CXF2436F843R	CXFT2436F843R	CXF2436F843X	CXFT2436F843X
48	480	3	56	CXF2448F856	CXFT2448F856	CXF2448F856R	CXFT2448F856R	CXF2448F856X	CXFT2448F856X
48	600	3	56	CXF2448F856	CXFT2448F856	CXF2448F856R	CXFT2448F856R	CXF2448F856X	CXFT2448F856X
60	480	3	68.25	CXF2460F868	CXFT2460F868	CXF2460F868R	CXFT2460F868R	CXF2460F868X	CXFT2460F868X
60	600	3	68.25	CXF2460F868	CXFT2460F868	CXF2460F868R	CXFT2460F868R	CXF2460F868X	CXFT2460F868X

### 8" - 150 LB

STEEL FLANGE / INCOLOY ELEMENTS | 15 WATTS/IN<sup>2</sup> | 27 ELEMENT

Kilo-Watt	Voltage	Phase	B Dim	General Purpose Terminal Box		NEMA 4 Terminal Box		Explosion Proof Terminal Box	
				No t/stat	50 - 250°F t/stat	No t/stat	50 - 250°F t/stat	No t/stat	50 - 250°F t/stat
27	480	3	31.25	CXF2727F831	CXFT2727F831	CXF2727F831R	CXFT2727F831R	CXF2727F831X	CXFT2727F831X
27	600	3	31.25	CXF2727F831	CXFT2727F831	CXF2727F831R	CXFT2727F831R	CXF2727F831X	CXFT2727F831X
40.5	480	3	43.5	CXF2740F843	CXFT2740F843	CXF2740F843R	CXFT2740F843R	CXF2740F843X	CXFT2740F843X
40.5	600	3	43.5	CXF2740F843	CXFT2740F843	CXF2740F843R	CXFT2740F843R	CXF2740F843X	CXFT2740F843X
54	480	3	56	CXF2754F856	CXFT2754F856	CXF2754F856R	CXFT2754F856R	CXF2754F856X	CXFT2754F856X
54	600	3	56	CXF2754F856	CXFT2754F856	CXF2754F856R	CXFT2754F856R	CXF2754F856X	CXFT2754F856X
67.5	480	3	68.25	CXF2767F868	CXFT2767F868	CXF2767F868R	CXFT2767F868R	CXF2767F868X	CXFT2767F868X
67.5	600	3	68.25	CXF2767F868	CXFT2767F868	CXF2767F868R	CXFT2767F868R	CXF2767F868X	CXFT2767F868X

### 8" - 150 LB

STEEL FLANGE / INCOLOY ELEMENTS | 15 WATTS/IN<sup>2</sup> | 30 ELEMENT

Kilo-Watt	Voltage	Phase	B Dim	General Purpose Terminal Box		NEMA 4 Terminal Box		Explosion Proof Terminal Box	
				No t/stat	50 - 250°F t/stat	No t/stat	50 - 250°F t/stat	No t/stat	50 - 250°F t/stat
30	480	3	31.25	CXF3030F831	CXFT3030F831	CXF3030F831R	CXFT3030F831R	CXF3030F831X	CXFT3030F831X
30	600	3	31.25	CXF3030F831	CXFT3030F831	CXF3030F831R	CXFT3030F831R	CXF3030F831X	CXFT3030F831X
45	480	3	43.5	CXF3045F843	CXFT3045F843	CXF3045F843R	CXFT3045F843R	CXF3045F843X	CXFT3045F843X
45	600	3	43.5	CXF3045F843	CXFT3045F843	CXF3045F843R	CXFT3045F843R	CXF3045F843X	CXFT3045F843X
60	480	3	56	CXF3060F856	CXFT3060F856	CXF3060F856R	CXFT3060F856R	CXF3060F856X	CXFT3060F856X
60	600	3	56	CXF3060F856	CXFT3060F856	CXF3060F856R	CXFT3060F856R	CXF3060F856X	CXFT3060F856X
75	480	3	68.25	CXF3075F868	CXFT3075F868	CXF3075F868R	CXFT3075F868R	CXF3075F868X	CXFT3075F868X
75	600	3	68.25	CXF3075F868	CXFT3075F868	CXF3075F868R	CXFT3075F868R	CXF3075F868X	CXFT3075F868X