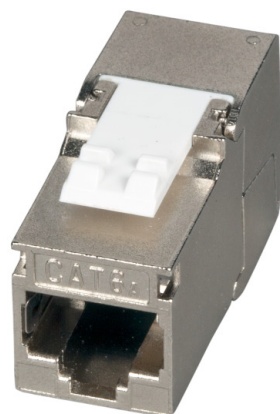


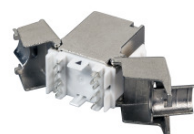
# DATASHEET

## RJ45 Keystone STP, Cat.6A, 500MHz, Slimline



Cat.6<sub>A</sub> 10 Gbit

500 MHz



### Description

The RJ45 keystone module slimline guarantees very good characteristics for 10Gbit Ethernet application. Special tools are not needed. The assembling is carried out fast and easy. With the RJ45 module slimline you get a full shielded module which provides you good longterm service in your network infrastructure.

### Specifications:

Extremely small design „Slimline“ for installation with **UAE** frame sets, **design capable**  
 Compact cable presorter for contacting IDC-Terminals AWG 24/1 .. 22/1 and AWG 26/7 .. AWG 24/7  
 Pair management according to TIA 568A /B colour codes  
 Appropriate for all distribution panels and frames with keystone slots  
 Flexibel strain relief for different cable diameter  
 Captive dust cover

### Scope of delivery:

1 x RJ45 keystone, 1 x captive dust cover, 1 x copper foil, 2 x cable ties, mounting instruction

### General data

Category	6A (IEC)
Model	jack (jack)
Connection type	IDC
Type of connector	RJ45 8(8)
Screened	Yes
AWG-range for litz wire conductor	26 - 24

This datasheet was created automatically on 17-10-2019 . Technical changes reserved.



# DATASHEET

## RJ45 Keystone STP, Cat.6A, 500MHz, Slimline

### General data

AWG-range for solid core	24 - 22
Special tool necessary	No
Suitable for round cable	Yes
Suitable for flat cable	No
Suitable for litz wire conductor	Yes
Suitable for solid core	Yes
Housing material	Zinc alloy
Dust cover	Yes
Complaint to UL94	V-0
For UAE suitable	yes

### Mechanical characteristics

Max. cable diameter	8.5 mm
Mating cycles	≥ 750
Contact coating	50 μ"
Separate earthing flag	yes
360° shield contact	yes
Shield contact and strain relief separate	yes

### Environmental conditions

Temperature range	-40 - 66 °C
-------------------	-------------

### Electrical characteristics

Dielectric Withstanding Voltage	1000 V AC 60Hz
Current Rating	2 A
Insulation Resistance	≥ 500 MΩ
Contact Resistance	≤ 20 mΩ

### Standards, approvals, certifications

4PPOE certified	yes
-----------------	-----

### Available variants

Article no.	Title	Colour
E-20095	RJ45 Keystone Slimline, Cat.6A, silver	silver

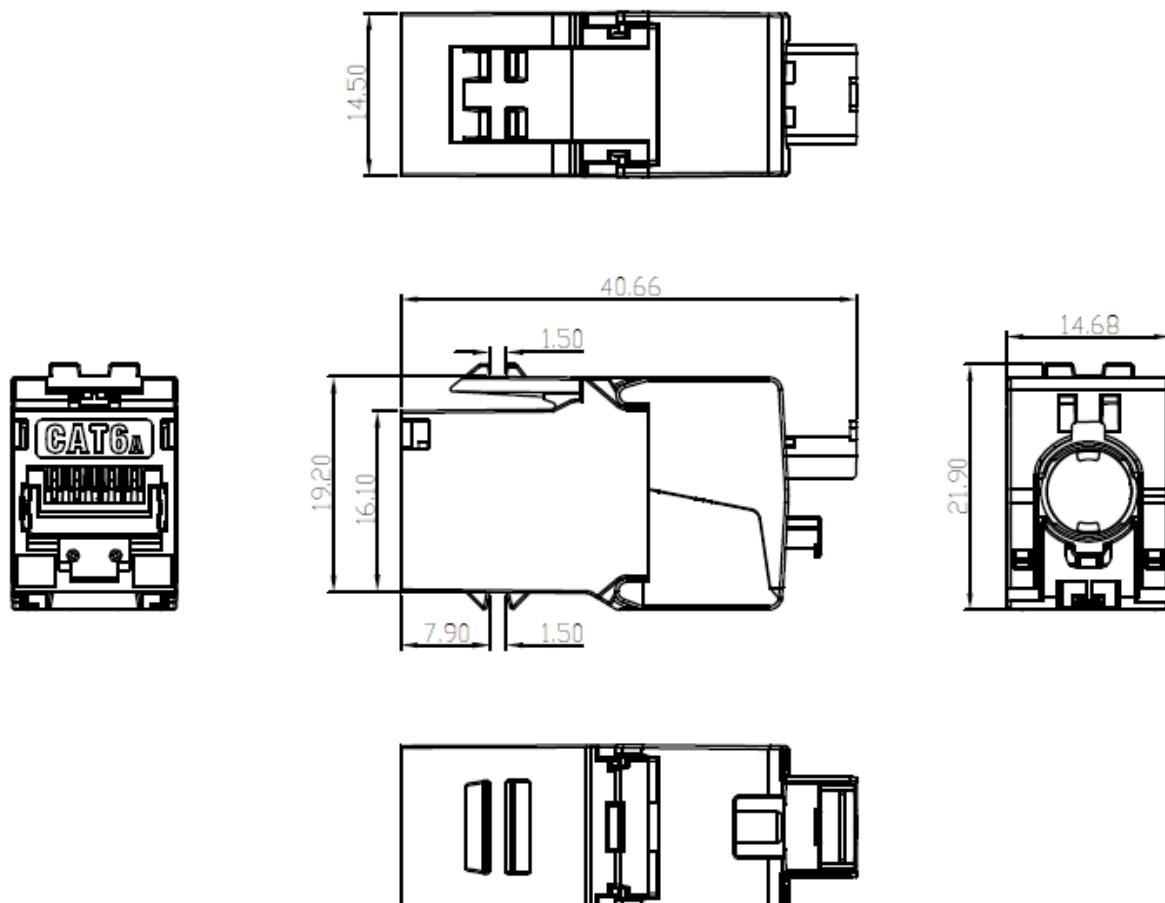
This datasheet was created automatically on 17-10-2019 . Technical changes reserved.



# DATASHEET

## RJ45 Keystone STP, Cat.6A, 500MHz, Slimline

### Technical drawings



### accessory

37576.1	Distribution Panel 19" 1HE 24-Port, metal
37580.1	Distribution Panel 19" 1U 24-Port, black
37578.1	Distribution Panel 19" 1HE 24-Port, grey
ET-25090	Frame Set for 2 x Slimline Keystone
ET-25111K	Keystone Frame revolving 2-Port, for Keystones, design capable TAE
ET-25111	Frame Set 2-Port, for Keystones, design capable TAE

### similar product

E-20091	RJ45 Keystone STP, Cat.6A, 500MHz, components certified, earthing
---------	---

This datasheet was created automatically on 17-10-2019 . Technical changes reserved.

