

# ECOFAN W

## Recirculation fan

Recirculation fan with thermostatic control and isolator switch. Air displacement 4,000 to 14,000m<sup>3</sup>/h.



For more information,  
downloads and  
videos, visit the Ecofan  
W page on our website



## Easy to use, with savings up to 30% on your energy consumption



### Product features

- Aluzinc housing
- Integrated thermostat
- 4-sided downflow hood
- Low maintenance

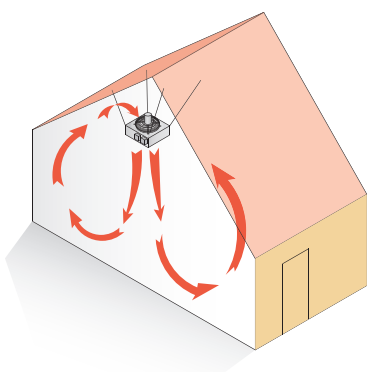
Mark recommends an ECOFAN with every air heater. A combination of these products provides optimum comfort and good heat distribution within the room. It is known that hot air rises which means that an air heater requires more time to heat up a room. A thermostatically-controlled ECOFAN transports the warm blanket under the roof to the occupied area. As a result, the room heats up more quickly, and gas consumption can in some cases be reduced by up to 30%.

The ECOFAN recirculating fan is available with various air displacements from 4.000 to 14.000 m<sup>3</sup>/h. The unit comes as standard with isolator switch and a reverse operating room thermostat that switches on the fan when the area under the ceiling becomes hot. The unit is also available as an ATEX / EEX-model, with the following classification: Ex II 2 G c Ex e IIB T3.

The ECOFAN can be used in construction halls, workshops, garages and logistics areas.

### The ECOFAN is also available with speed controlled low noise EC-motor. Advantages:

- The highest efficiency in case of speed control
- Up to 50% energy saving in case of partial load
- Almost completely linearly adjustable
- Long lifetime
- Low noise level
- Integrated electronic thermal protection

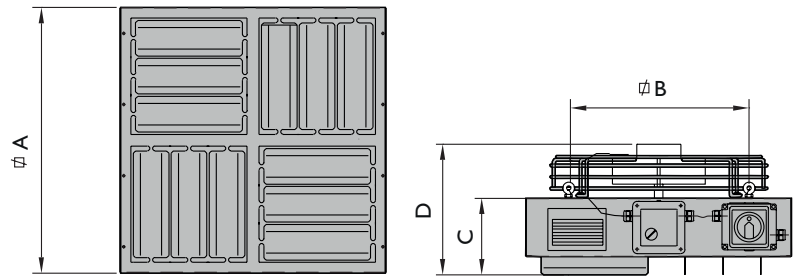


Remote control possible with the PinTherm Connect IoT! Control the thermostat from anywhere in the world via a secure Cloud environment in the browser of your PC, tablet or smartphone. No need to open a firewall port for this. With the optional WiFi module, a LAN cable is also no longer needed for the thermostat.



## Dimensions

Type	W42	W82	W142
A	560	720	860
B	500	600	797
C	185	170	220
D	280	265	325

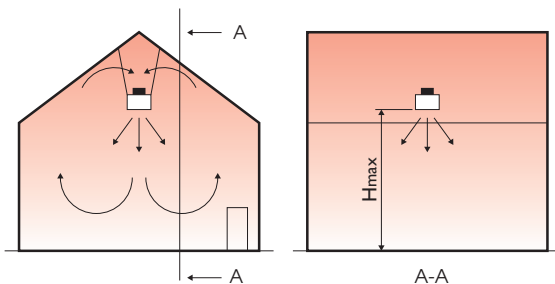


## Technical information

Type		W42	W82	W142
Air displacement	m <sup>3</sup> /h	4000	8000	14000
Motor rating AC-motor	W	150	360	535
Motor rating EC-motor	W	125	320	620
Consumed current AC-motor	A	0,65	1,7	2,5
Consumed current EC-motor	A	1,0	2,2	2,7
Motor speed AC-motor	min <sup>-1</sup>	1050	1150	880
Motor speed EC-motor	min <sup>-1</sup>	1400	1490	1000
Protection class of motor	IP	20	20	20
Supply voltage (50Hz)	V	1~230	1~230	1~230
Noise level	dB(A)	45	50	59
Weight	kg	18	24	34
Mounting height	m	4 - 8	7 - 13	10 - 18 (- 30*)
Covered m <sup>2</sup> per fan	m <sup>2</sup>	400	625	900

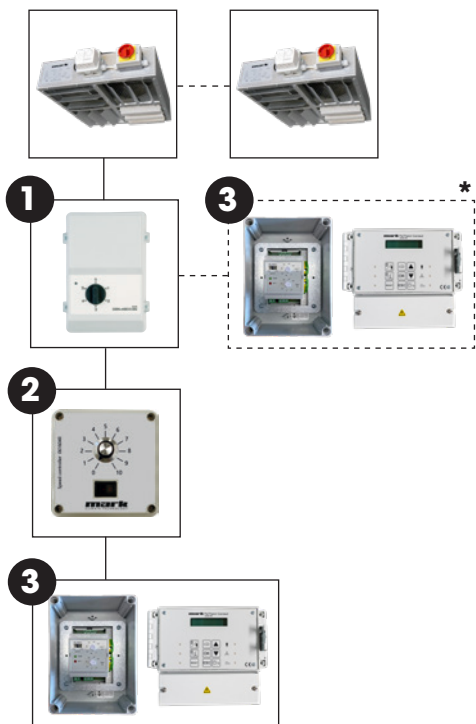
\* With cone

## Assembly/location suggestions



## Controls

### AC-motor



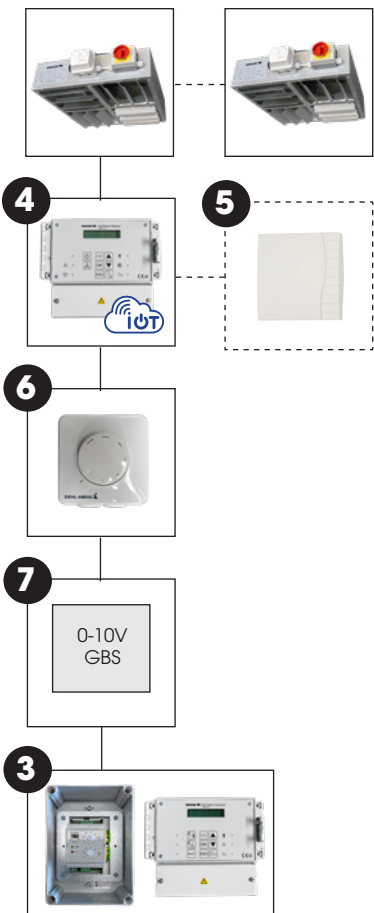
#### Control combination options AC

- Ecofan W (AC) + **1**
- Ecofan W (AC) + **1** + **3** \*
- Ecofan W (AC) + **3**
- Ecofan W (AC) + **2**

1 = Control panel Ecofan W42-W82 (0616186, 0616188, 0616189)  
 1 = Control panel Ecofan W142 (3003096, 3003097, 3003098)  
 2 = Controller P140 (0616040)  
 3 = Destratification control RJ402 incl. PinTherm Connect (3002660)

\* This allows the Ecofan to be manually regulated in speed (no automatic speed control).

### EC-motor



#### Control combination options EC

- Ecofan W (EC) + **2**
- Ecofan W (EC) + **4** + **5**
- Ecofan W (EC) + **6**
- Ecofan W (EC) + **7**

2 = Controller P140 (0616040)  
 4 = PinTherm Connect with Ethernet, Modbus and Cloud control (IoT:0629108 / IoT+WiFi: 3003870)  
 5 = Room sensor (0629086)  
 6 = Potentiometer 10K with on/off contact IP54 (0631390)



## Prices Ecofan W



## PRODUCT - ECOFAN W-SERIE RECIRCULATION MODEL - INCL. THERMOSTAT AND ISOLATOR SWITCH

Code nr.	Description
5065005	ECOFAN W42, air displacement 4.000 m3/h
5065010	ECOFAN W82, air displacement 8.000 m3/h
5065012	ECOFAN W142, air displacement 14.000 m3/h



## PRODUCT - ECOFAN W-SERIE RECIRCULATION MODEL WITH EC-MOTOR - INCL. THERMOSTAT AND ISOLATOR SWITCH

Code nr.	Description
5065003	ECOFAN W42, air displacement 4.000 m3/h
5065008	ECOFAN W82, air displacement 8.000 m3/h
5065014	ECOFAN W142, air displacement 14.000 m3/h

## ACCESSORIES - ADDITIONAL SECTIONS

Code nr.	Description
5064019	Destratification hood for type W142

## ACCESSORIES - CONTROLS

Code nr.	Description
① 0616186	Control panel, 5-step, 230V - 6,0A, for Ecofan W42-W82*
① 0616188	Control panel, 5-step, 230V - 12A, for Ecofan W42-W82*
① 0616189	Control panel, 5-step, 230V - 14A, for Ecofan W42-W82*
① 3003096	Control panel, 5-step, 230V - 6,0A, for Ecofan W142*
① 3003097	Control panel, 5-step, 230V - 12A, for Ecofan W142*
① 3003098	Control panel, 5-step, 230V - 14A, for Ecofan W142*
③ 3002660	Destratification control RJ402 incl. PinTherm Connect
④ 0629108	PinTherm Connect IoT room thermostat with Ethernet, Modbus and Cloud control
④ 3003870	PinTherm Connect IoT/WiFi room thermostat with Ethernet, Modbus and Cloud control
⑥ 0631390	Potentiometer 10K with on/off contact IP54
⑤ 0629086	Room sensor only in combination with 0629108/3003870
② 0616040	Controller P140 **

For explanation see chapter control equipment

## ACCESSORIES - ASSEMBLY

Code nr.	Description
1999042	Suspension-set for W42, W82 en W142. Contains: 4 pieces of chain at 550 mm and 8 x carbine hook (5x50mm)

## ACCESSORIES - COLOURS \*\*\*

Code nr.	Description
	ECOFAN W42 provided with colour
	ECOFAN W82 provided with colour
	ECOFAN W142 provided with colour

## REMARKS

\* W42 0,65A/230V, W82 1,7A/230V, W142 2,5A/230V

\*\* Maximum 2 pieces W42, maximum 1 piece W82, not applicable to W142

\*\*\* These prices are only for the Mark standard RAL-colours: 3002 red, 1028 yellow, 6010 green, 7016 gray, 8014 brown, 9001 beige white, 5009 blue, 2009 orange, 1019 beige