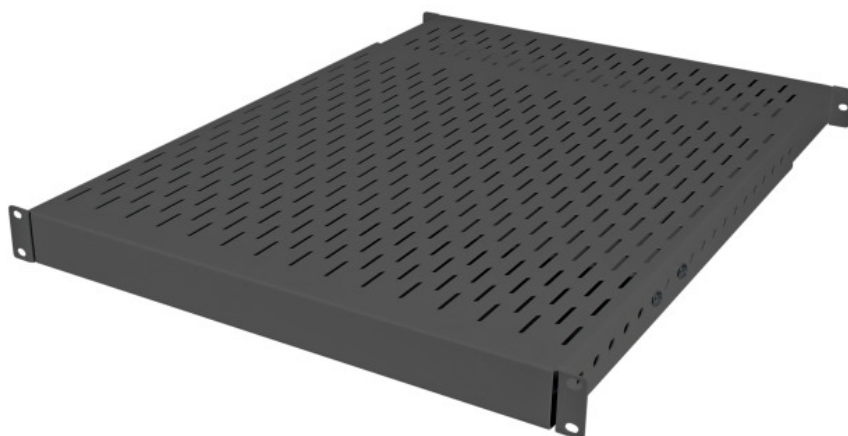


DATASHEET

19" 1U Heavy-Duty Shelf, Depth 350-600 mm, Cab.-D. 600 mm, 150 kg, RAL9005



Description

For mounting in all network and server cabinets and 19" rack frames

Width 445 mm

691653 for rack frame depth I, II and III

691653.2 for rack frame depth III

Fixing to rear mounting profiles necessary

Material steel sheet

Paint finish RAL9005, jet black

General data

Model	Shelf
Material	Metal
Adjustment	350 – 600 mm
Max. load	150 kg
Weight	5.2 kg

Available variants

Article no.	Title	Width	Height	Cabinet Depth	Colour	RAL-number
691653TS	19" 1U Heavy-Duty Shelf, D=350-600 mm, Cab.-D. 600 mm, 150 kg, RAL9005	445 mm	44.45 mm	600 mm	Black	9005

This datasheet was created automatically on 17-10-2019 . Technical changes reserved.

