

# Terminator™ ZL

## Lighted Power Connection/ End Termination Kit

### INSTALLATION PROCEDURES

For Power Connection or End Termination Applications



**The Heat Tracing Specialists®**

# Terminator™ ZL

## Kit Contents . . .



Item	Quantity	Description
1	1	Expediter Assembly Support Cap with O-Ring Threaded Grommet Compressor Grommet Support Base with O-Ring
2	1	Junction Box Lid
3	1	Junction Box Base with O-Ring
4	1	Nut
5	1	Banding
6	1	Banding Guide
7	1	Terminal Blocks with DIN Rail (Refer to terminal specifications for maximum allowable wire size)
8	1	Junction Box Cord

## Order Separately . . .

### PETK Power and End Termination Kits (per cable)

PETK-1 for BSX, RSX, VSX

PETK-2 for KSX, HTSX

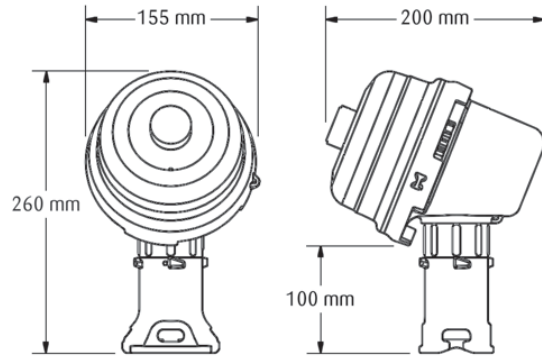
PETK-3 for HPT, FP



Item	Quantity	Description
1	1	RTV Tube
2	1	Power Connection Boot
3	1	End Cap
4	1	Tape Strip 6" (PETK-3 only)
5	1	End Termination Caution Label
6	1	GRW-G Grommet (PETK-3 only)
7	1	Ground Sleeve

# INSTALLATION PROCEDURES

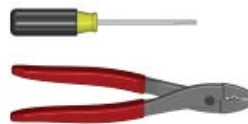
## Dimensions . . .



## Installation Precautions . . .

- To minimize the potential for arcing and fire caused by product damage or improper installation use ground-fault protection. The National Electrical Code (NEC) and Canadian Electrical Code (CEC) require ground-fault protection of equipment for each branch circuit supplying electric heat tracing.
- Installation must comply with Thermon requirements and be installed in accordance with the NEC, CEC, or any other applicable national and local codes.
- Component approvals and performance ratings are based on the use of Thermon specified parts only. User supplied power connection fittings must be listed or certified for intended use.
- De-energize all power sources before opening enclosure.
- Avoid electrostatic charge. Clean only with a damp cloth.
- Keep ends of heating cable and kit components dry before and during installation.
- Individuals installing these products are responsible for complying with all applicable safety and health guidelines. Proper personal protective equipment, or PPE, should be utilized during installation. Contact Thermon if you have any additional questions.

## Tools Required . . .



## Certifications/Approvals . . .



IP66/Type 4X -60°C ≤ Ta ≤ +55°C  
Listed Heat Tracing Cable System 137M  
Ordinary & Hazardous Locations



Class I, Division 2, Groups A, B, C, & D  
Class II, Division 2, Groups F & G, Class III



Class I, Zone 1, AEx eb IIC T4-T6  
09.2238691,-G,-S, Ex e IIC T4-T6



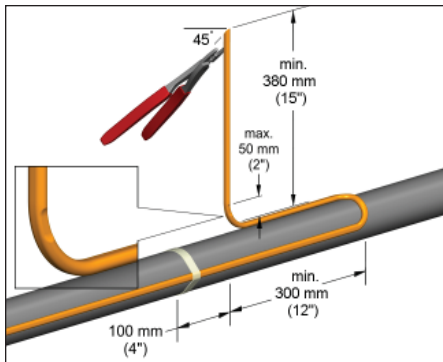
FMG 10.0022X Ex eb IIC T4-T6, Ex tb IIIC T135°C-T85°C



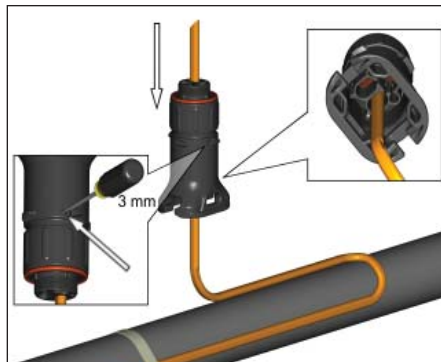
1725 Ex II 2 GD Ex eb IIC T4-T6, Ex tb IIIC T135°C-T85°C FM 10ATEX0058X



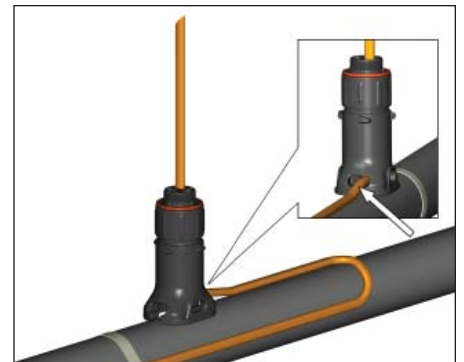
The Heat Tracing Specialists®



1. Locate bus connection (HPT and FP only) and cable as shown. Cut end of cable at angle to aid in piercing grommet. Leave additional cable for expansion loop. See page 4 for multiple cable installation tips.



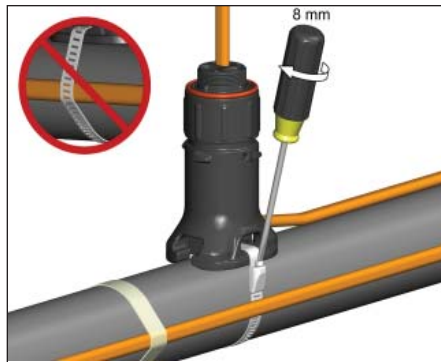
2. Insert cable into expediter. If mounted on bottom or side of pipe, punch out weep hole. Note: For HPT and FP cable, exchange grommet in Terminator with GRW-G provided in PETK-3.



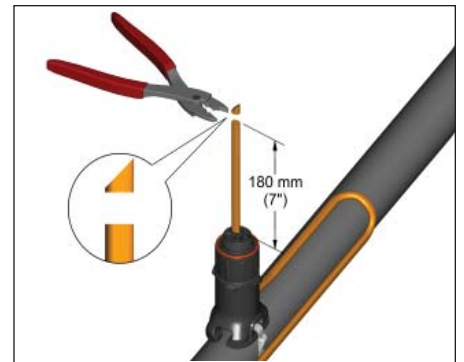
3. Slide expediter toward pipe and route cable through support base entry.



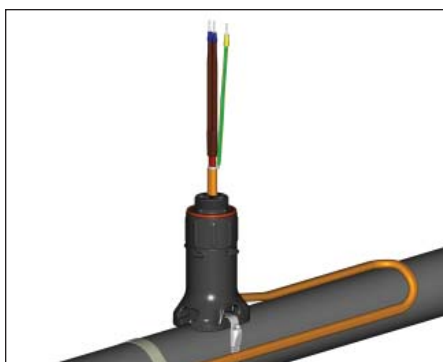
4. Insert banding guide into expediter and snap into place.



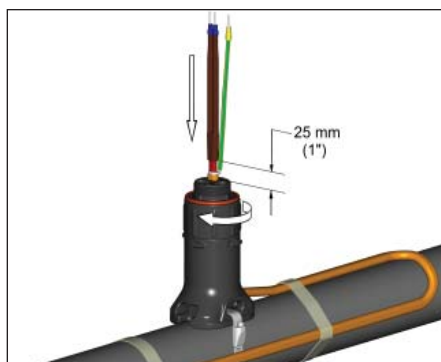
5. Mount expediter to pipe using pipe band. Do not band over cable.



6. Cut off end of cable.



7. Terminate cable with appropriate PETK termination kit. Refer to PETK installation instructions.



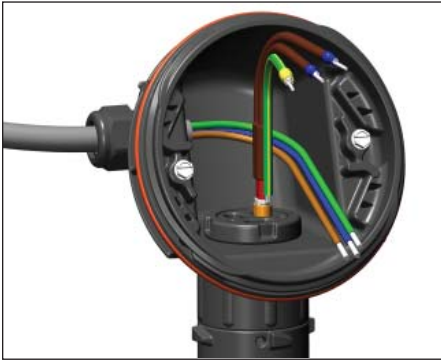
8. Push excess cable back through expediter. Tighten cap securely. Tape cable expansion loop to pipe.



9. Mount junction box base on expediter. Make sure to align slots to properly orient junction box base. If mounting horizontally, threaded gland holes must face downward.

# Terminator™ ZL

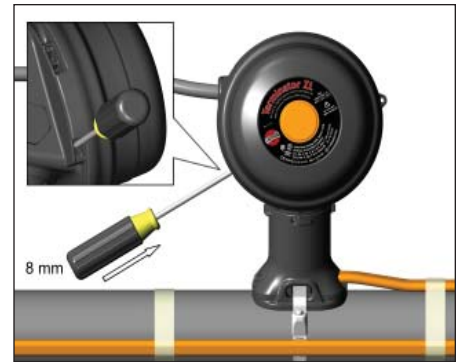
## INSTALLATION PROCEDURES



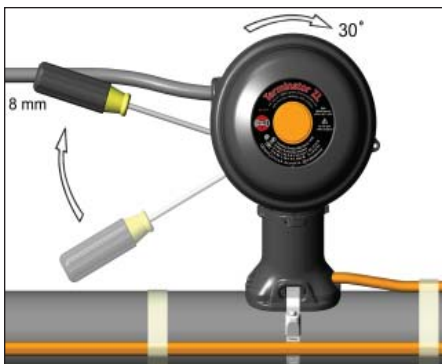
**10.** Install power cable (if necessary).



**11.** Install quick mount terminal blocks and tighten screws (if necessary). Complete system wiring. Terminal set screws shall be tightened to a torque value of 1.4 Nm (12.4 lb-in). See below for wiring details.

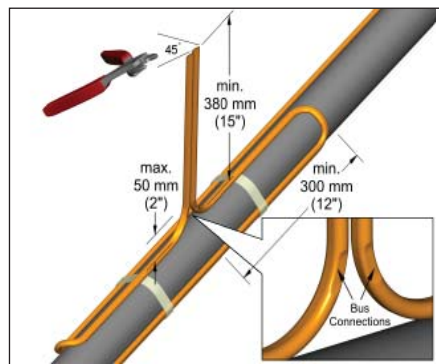


**12.** Install junction box lid and twist hand tight. Insert screwdriver into ratchet slots located on side of junction box base.

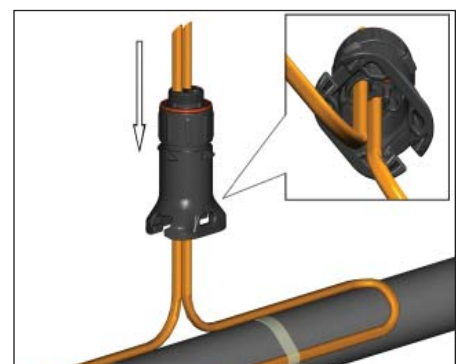


**13.** Use screwdriver to ratchet on junction box lid. Lid will rotate 30 degrees. Lid latch mechanism fully engaged. To remove lid, repeat steps 12 and 13 but in the opposite direction.

### Two Cable Layout Tips



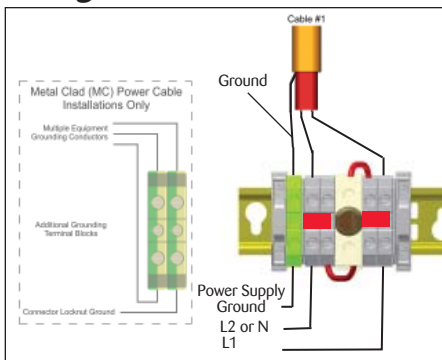
Locate bus connection (HPT and FP only) and cable as shown. Cut end of cable at angle to aid in piercing grommet. Leave additional cable for expansion loop.



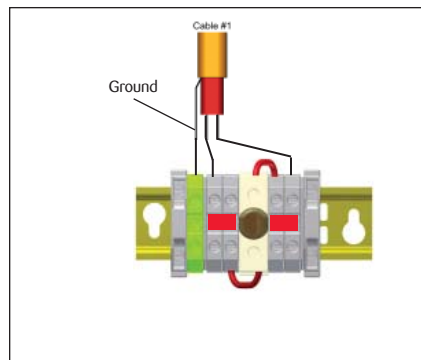
Insert two cables into expediter.

Note: For HPT and FP cable, exchange grommet in Terminator with GRW-G provided in PETK-3.

### Wiring Details



Power Connection (1 to 2 Heating Cables)



End Termination (1 Heating Cable Only)



**THERMON . . . The Heat Tracing Specialists®**  
www.thermon.com

Corporate Headquarters  
100 Thermon Dr. • PO Box 609  
San Marcos, TX 78667-0609 • USA  
Phone: +1 512-396-5801

ISO 9001  
REGISTERED

Specifications and information are subject to change without notice. Form PN50848-0312

For the Thermon office nearest you  
visit us at . . .

[www.thermon.com](http://www.thermon.com)