

1 Head office Netherlands

Head office Schoeller Allibert Services B.V.
Taurusavenue 35
NL-2132 LS Hoofddorp

2 Austria

Schoeller Allibert GmbH
Rudolf Diesel-Strasse 26
AT-2700 Wr. Neustadt
+43 2622 206 56

3 Belgium

Schoeller Allibert Belgium B.V.
Industrieweg 143
BE-3583 Beringen
+32 11 39 38 38

4 Czech Republic

Schoeller Allibert Czech Republic s.r.o.
Na Rovince 879
CZ-720 00 Ostrava
+420596790010

5 France

Schoeller Allibert Paris
TOUR W - 102 Terrasse Boieldieu
CS 60639 - Etage R+13
FR-92085 Paris La Defense Cedex
+33 4 74 76 79 47

6 Germany

Schoeller Allibert GmbH Berlin
Vossstrasse 20
DE-10117 Berlin
+49 30 311 979 20

7 Hungary

Schoeller Allibert Hungary Kft
Szabadsag ut 117.
H-2040 Budaors
+36 23 332 010

8 Italy

Schoeller Allibert S.p.A.
Via Enzo Ferrari, 1 -Frazione
Zucche
IT-10040 Volvera (TO)
+39 011 39 75 759

9 Latvia

Schoeller Allibert SIA
Ritausmas street 2
LV-1058 Riga
+371 6 7382280

10 Netherlands

Schoeller Allibert Netherlands B.V.
Bruchterweg 88
NL-7772 BJ Hardenberg
+31 523 727 020

11 Poland

Schoeller Allibert Sp. z o.o.
ul. Fryderyka Wilhelma Redena 5
41-808 Zabrze
+48 32 283 13 10

12 Romania

Schoeller Allibert SRL
Str Turnu Magurele nr. 270 D
RO-041713 Bucharest
+40 21 460 20 88

13 Slovakia

Schoeller Allibert SRL
Str Turnu Magurele nr. 270 D
RO-041713 Bucharest
+40 21 460 20 88

14 Czech Republic

Schoeller Allibert s.r.o.
Kominárska 2,4
SK-831 04 Bratislava
00 421 2 555 65940

15 Spain

Schoeller Allibert, SAU
Av. Camí Reial, 8
Pl. Riera de Caldes
ES-08184 Palau-Solità i Plegamans, Barcelona
00 34 93 271 0120

16 Sweden

Schoeller Allibert Sweden AB
Hässelholmsvägen 10, P.O. Box 82
SE-28422 Perstorp
00 46 435 777 000

17 Switzerland

Schoeller Allibert Swiss Sàrl
Route de la Condemine 11
CH- 1680 Romont
00 41 266 519 210

18 United Kingdom & Ireland

Schoeller Allibert Limited
Road One Industrial Estate
GB-CW7 3RA Winsford
00 44 1606 561900

19 International

Schoeller Allibert International GmbH
Zugspitzstrasse 15
DE-82049 Pullach
00 49 89 638 66 0

20 Lathi

Schoeller Allibert Oy
Askonkatu 9 E
FI-15100 Lahti

Other continents

Chile

Logipak Schoeller Allibert SPA
Hermanos carrera into 79
Colina, Santiago, Chile
0056 (2) 24815970

India

Schoeller Allibert LL
01B-102, Wework Raheja Platinum, Sag Baug Road,
Off Andheri Kurla Road, Marol, Andheri E
400059 Mumbai
00 91 86 98 88 00 55

China

Schoeller Arca System Trading (Shanghai) Co. Ltd.
Room 903, Tower One, Kerry Everbright City No.218
West Tianmu Road, Jingan District CN-200072
Shanghai
00 86 21 31 33 50 80

Mexico

Schoeller Allibert International México, S.A. de C.V.
Avenida Cafetales 1702 D-205
Col. Hacienda de Coyoacán
Delegación Coyoacán
C.P. 04970
México D.F.
0049 89 638 66 0

UAE

Schoeller Allibert International Middle East LLC
Office 117 Abu Dhabi Airport Business Park
PO Box 2131
AE- Abu Dhabi, UAE
00971 2 419 2771

USA

Schoeller Allibert
4320 S. Cotton Lane Suite 200
Goodyear, AZ 85338
00 1 623 889 7970



EFFICIENT BY DESIGN CIRCULAR BY NATURE

Schoeller Allibert



Schoeller Allibert

efficient by design ∞ circular by nature



Schoeller Allibert
efficient by design ∞ circular by nature

www.schoellerallibert.com | info@schoellerallibert.com

In line with its policy of continuous development, Schoeller Allibert reserves the right to amend product specifications described in this catalogue without prior notice. Most of our products are protected by patent, registered design or copyright. Texts, characteristics, pictures and plans are not contractual. Creation 03/2024.

Schoeller Allibert Plastic Pallets

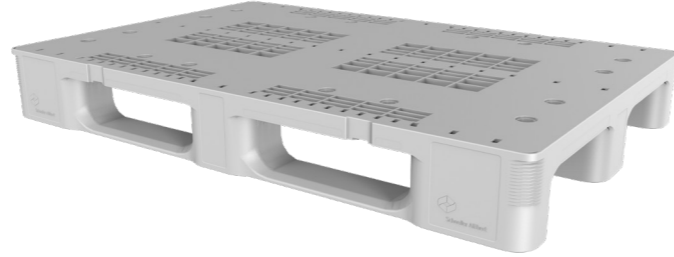
Schoeller Allibert offers a diverse range of plastic pallets, featuring various footprints and types including display, light, medium, heavy-duty, and clean room options to suit all logistical requirements. Our pallets are designed to prioritize durability, profitability, hygiene, and safety, ensuring optimal benefits.

Lightweight Pallets



- **Versatile Range:** Offered in different footprints to meet diverse industrial and logistics requirements, suitable for low and medium density loads.
- **Retail Ready:** Strong and reliable, capable of supporting loads from manufacturing workshops to retail stores.
- **Export-Friendly:** Ideal for export as plastic pallets eliminate the need for fumigation, maintain constant tare weight, and prevent contamination when stored outdoors.
- **Nestable models:** Nestable models significantly reduce reverse logistics costs and storage space when empty, while skid-equipped models enhance rigidity and maximize unit load efficiency.
- **Eco-Friendly Design:** All models are recyclable at the end of their service life, contributing to a reduced carbon footprint and minimizing packaging waste.

Medium Pallets



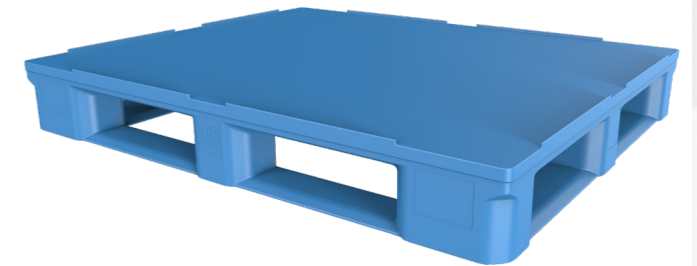
- **Improved Logistics Efficiency:** Our medium-duty pallets offer consistent tare weight and nesting capabilities, resulting in reduced logistics costs. They are suitable for medium duty load capacities, enhancing operational efficiency.
- **Exceptional Performance:** Our pallets are designed for optimal performance, offering robustness while being lightweight.
- **Versatility and Compatibility:** Medium-duty pallets are compatible with a wide range of automated processes and logistics systems. They come in various configurations to accommodate different handling requirements, making them adaptable to diverse environments.
- **Adaptability for Retail and Display:** Our pallets can be easily transformed into large containers by adding a pallet collar, making them ideal for retail delivery and display purposes.

Heavy Pallets



- **Versatile Applications:** Our heavy-duty pallet range is designed to meet the rigorous demands of industrial logistics, offering options suitable for various applications, including recycled non-food models.
- **Compliance and Safety:** Our H1 GS1 pallet, compliant with German meat industry and retail standards. These pallets are robust and secure, serving as a reliable foundation for food industry logistics.
- **High Load Capacities:** Engineered for heavy-duty applications, our pallets maintain stability under high bay racking conditions. They can support substantial loads, ensuring efficient storage and handling of heavy items.
- **Versatile Design:** Adaptable Design: Rounded corners ensure secure stretch wrapping, while safety rims guarantee steady load transport. Available in various deck and rim configurations to meet specific needs.

Cleanroom Pallets



- **Enhanced Precision and Durability:** Pallets in our Maestro range boast smooth surfaces and patented anti-slip technology, ensuring optimal grip for various containers. Reinforced models guarantee extended durability in challenging environments.
- **Maximum Safety and Hygiene:** Our cleanroom pallet range offers robustness, hygiene, and safety, making it ideal for cleanroom applications. Its smooth and easy-to-clean design enhances cleanliness, providing maximum safety during handling.
- **Heavy-Duty Solution:** The heavy-duty Maestro pallet is tailored for cleanroom applications. With maximum safety and hygiene in mind, its smooth design ensures ease of cleaning. Rounded corners facilitate secure stretch wrapping, while the safety rim ensures goods remain securely on the pallet and offers stability when stacked.

600X400 PALLETS

Key benefits for 600x400 sized pallets:

- Compact Size:** Perfect for transporting smaller quantities, ideal for in-store logistics and temporary sales.
- Lightweight:** Easy to handle, reducing strain during loading and unloading.
- Export-Ready:** Made from 100% plastic so no fumigation needed or contamination when stored outside.
- Nestable Design:** Saves space when not in use, optimizing warehouse efficiency.
- Versatile:** Suitable for various industries and purposes.

Lightweight Pallets

	1850006 - BiPP Display - 4F
Ext. (mm)	600 x 400 x 140
Weight (Kg)	1.6
Static load (Kg)	250
Dynamic load (Kg)	250
Racking load (Kg)	0
Incr. nest height (mm)	44
Nesting (%)	69
Safety rim	No

	7313001 - Display pallet - 6F, R
Ext. (mm)	600 x 400 x 145
Weight (Kg)	1.6
Static load (Kg)	750
Dynamic load (Kg)	250
Racking load (Kg)	0
Incr. nest height (mm)	87
Nesting (%)	40
Safety rim	Yes (5mm)

800X600 PALLETS

Key benefits for 800x600 sized pallets:

- Durable:** Built to last, withstanding heavy loads and frequent use.
- Hygienic:** Plastic construction prevents contamination, suitable for food and pharmaceutical industries.
- Space-saving:** Nestable models saves storage space.
- Export-ready:** No fumigation needed, constant tare weight for consistent shipping costs.
- Versatile:** Available in light, medium, and heavy-duty options for various applications.

Lightweight Pallets

	6101751 - BiPP L - 3R
Ext. (mm)	800 x 600 x 145
Weight (Kg)	3.7
Static load (Kg)	500
Dynamic load (Kg)	250
Racking load (Kg)	0
Incr. nest height (mm)	63
Nesting (%)	57
Safety rim	No

	6101752 - BiPP L - 3R, R
Ext. (mm)	800 x 600 x 145
Weight (Kg)	3.7
Static load (Kg)	500
Dynamic load (Kg)	250
Racking load (Kg)	0
Incr. nest height (mm)	63
Nesting (%)	57
Safety rim	Yes (3mm)

Medium Pallets

	9211001 - 0806 Allibert - 3R, R
Ext. (mm)	800 x 600 x 167
Weight (Kg)	6.2
Static load (Kg)	2000
Dynamic load (Kg)	750
Racking load (Kg)	0
Incr. stack height (mm)	160
Safety rim	Yes (7mm)
Nestable	No

	9370004 - Universal Pallet - 3R, R
Ext. (mm)	800 x 600 x 177
Weight (Kg)	6.6
Static load (Kg)	500
Dynamic load (Kg)	500
Racking load (Kg)	0
Incr. stack height (mm)	163
Safety rim	Yes (3mm)
Nestable	No



Did You Know?


Our 800x600 Universal Medium Pallet is a logistics game-changer! With the spring-loaded pop-up rims, it securely adapts to various loads. The flipper ensures stable stacking of our Kaiman series.


Heavy Pallets

	1882003 - BIPP 0806 - HD, 3R
Ext. (mm)	800 x 600 x 160
Weight (Kg)	8.5
Static load (Kg)	1000
Dynamic load (Kg)	500
Racking load (Kg)	0
Incr. stack height (mm)	160
Safety rim	No
Nestable	No

	1882002 - BIPP 0806 - HD 3R, R
Ext. (mm)	800 x 600 x 160
Weight (Kg)	8.6
Static load (Kg)	1000
Dynamic load (Kg)	500
Racking load (Kg)	0
Incr. stack height (mm)	160
Safety rim	Yes (22mm)
Nestable	No

	8740001 - 0806 Allibert - 3R
Ext. (mm)	800 x 600 x 160
Weight (Kg)	6.2
Static load (Kg)	2000
Dynamic load (Kg)	750
Racking load (Kg)	0
Incr. stack height (mm)	160
Safety rim	No
Nestable	No

	1882001 - BIPP 6080 - HD, 3R, R
Ext. (mm)	800 x 600 x 160
Weight (Kg)	8.5
Static load (Kg)	1000
Dynamic load (Kg)	500
Racking load (Kg)	0
Incr. stack height (mm)	160
Safety rim	Yes (6mm)
Nestable	No

	6100750 - Heavy - 3R
Ext. (mm)	800 x 600 x 147
Weight (Kg)	5
Static load (Kg)	1000
Dynamic load (Kg)	500
Racking load (Kg)	0
Incr. stack height (mm)	147
Safety rim	No
Nestable	No

	6100750 - Heavy - 3R
Ext. (mm)	800 x 600 x 147
Weight (Kg)	5
Static load (Kg)	1000
Dynamic load (Kg)	500
Racking load (Kg)	0
Incr. stack height (mm)	147
Safety rim	Full rim (20mm)
Nestable	No

1200X800 PALLETS

Key benefits for 1200x800 sized pallets:

- Versatile Range:** Schoeller Allibert provides a range of pallet sizes to suit various needs and applications.
- Efficient Storage:** Lightweight and nestable designs save space and reduce logistics costs.
- Heavy-Duty Durability:** Pallets with runners 3R offer rigidity for heavy loads.
- Cleanroom Compatible:** Smooth, easy-to-clean designs suitable for cleanroom environments.
- Stability Assurance:** Pallets with safety rims keep goods secure during handling and stacking.
- Pallet collar compatibility:** our 1200x800 pallets can be fitted with a pallet collar, transforming the pallet into a folding container that is ideal for retail delivery and display.

Lightweight Pallets

	3303001 - BIPP 1208 LiSa - 9F, R
Ext. (mm)	1200 x 800 x 150
Weight (Kg)	8.2
Static load (Kg)	1000
Dynamic load (Kg)	1000
Racking load (Kg)	0
Incr. nest height (mm)	65
Nesting (%)	57
Safety rim	Yes (4mm)

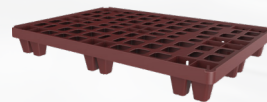
	1844552 - EOS Lightweight - 3R
Ext. (mm)	1200 x 800 x 158
Weight (Kg)	7.4
Static load (Kg)	2500
Dynamic load (Kg)	1000
Racking load (Kg)	0
Incr. stack height (mm)	160
Safety rim	Yes (5mm)
Nestable	No

	5591510 - EOS Light - 9F
Ext. (mm)	1200 x 800 x 130
Weight (Kg)	5.2
Static load (Kg)	500
Dynamic load (Kg)	500
Racking load (Kg)	0
Incr. nest height (mm)	45
Nesting (%)	65
Safety rim	Yes (4mm)

PackPal - Lightweight

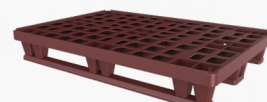
9380V01 - Packpal - 9F, Perforated

Ext. (mm)	1200 x 800 x 147
Weight (Kg)	6.15
Static load (Kg)	1500
Dynamic load (Kg)	650
Racking load (Kg)	0
Incr. stack height (mm)	55
Nesting (%)	63
Safety rim	Yes (7mm)



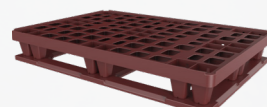
9378000 - Packpal - 3R, Perforated

Ext. (mm)	1200 x 800 x 172
Weight (Kg)	7.8
Static load (Kg)	1500
Dynamic load (Kg)	1000
Racking load (Kg)	0
Incr. stack height (mm)	165
Safety rim	Yes (7mm)
Nestable	No



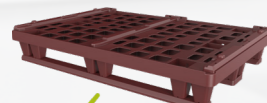
9386001 - Packpal - 6R, Perforated

Ext. (mm)	1200 x 800 x 172
Weight (Kg)	8.9
Static load (Kg)	1500
Dynamic load (Kg)	1200
Racking load (Kg)	700
Incr. stack height (mm)	165
Safety rim	Yes (7mm)
Nestable	No



9830V01 - Packpal Cheese - 3R, perforated

Ext. (mm)	1200 x 800 x 201
Weight (Kg)	8
Static load (Kg)	1500
Dynamic load (Kg)	1200
Racking load (Kg)	700
Incr. stack height (mm)	190
Safety rim	Yes (7mm)
Nestable	No



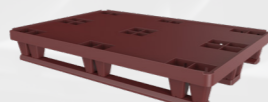
9380000 - Packpal - 9F, Solid

Ext. (mm)	1200 x 800 x 147
Weight (Kg)	7.5
Static load (Kg)	1500
Dynamic load (Kg)	650
Racking load (Kg)	0
Incr. stack height (mm)	55
Safety rim	63
Nestable	Yes (7mm)



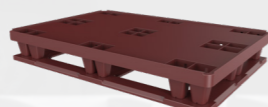
9378001 - Packpal - 3R, Solid

Ext. (mm)	1200 x 800 x 172
Weight (Kg)	8.9
Static load (Kg)	1500
Dynamic load (Kg)	1000
Racking load (Kg)	0
Incr. stack height (mm)	165
Safety rim	Yes (7mm)
Nestable	No



9386004 - Packpal - 6R, Solid

Ext. (mm)	1200 x 800 x 172
Weight (Kg)	11.7
Static load (Kg)	1500
Dynamic load (Kg)	1200
Racking load (Kg)	700
Incr. stack height (mm)	165
Safety rim	Yes (7mm)
Nestable	No



9386V00 - Packpal Cheese - 6R, Perforated

Ext. (mm)	1200 x 800 x 201
Weight (Kg)	11.7
Static load (Kg)	1500
Dynamic load (Kg)	1200
Racking load (Kg)	700
Incr. stack height (mm)	190
Safety rim	Yes (7mm)
Nestable	No



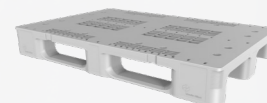
Did You Know?

Our PackPal Cheese pallets are tailored for cheese crates, enhancing ripening. Equipped with specialized stacking aids, these pallets ensure the safe and secure stacking of two 750x500 cheese containers., optimizing storage efficiency and cheese quality.

RackPal - Medium

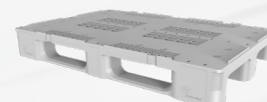
8380100 - Rackpal - 3R

Ext. (mm)	1206 x 800 x 152
Weight (Kg)	14.2
Static load (Kg)	6000
Dynamic load (Kg)	1500
Racking load (Kg)	800
Incr. stack height (mm)	152
Safety rim	No
Nestable	No



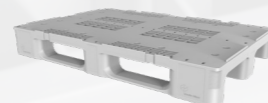
8380251 - Rackpal - 3R, HD, R

Ext. (mm)	1206 x 800 x 159
Weight (Kg)	17.7
Static load (Kg)	6000
Dynamic load (Kg)	1500
Racking load (Kg)	1100
Incr. stack height (mm)	152
Safety rim	Yes (7mm)
Nestable	No



8380200 - Rackpal - 3R, R

Ext. (mm)	1206 x 800 x 159
Weight (Kg)	14.2
Static load (Kg)	6000
Dynamic load (Kg)	1500
Racking load (Kg)	800
Incr. stack height (mm)	152
Safety rim	Yes (7mm)
Nestable	No



8380300 - Rackpal - 3R, R

Ext. (mm)	1206 x 805 x 174
Weight (Kg)	14.4
Static load (Kg)	6000
Dynamic load (Kg)	1500
Racking load (Kg)	800
Incr. stack height (mm)	152
Safety rim	Yes (22mm)
Nestable	No



H1 - Medium

8380351 - Rackpal - 3R, HD, R

Ext. (mm)	1206 x 805 x 174
Weight (Kg)	17.9
Static load (Kg)	6000
Dynamic load (Kg)	1500
Racking load (Kg)	1250
Incr. stack height (mm)	152
Safety rim	Yes (22mm)
Nestable	No



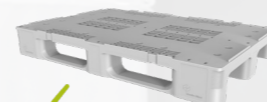
7842003 - H1 Pallet - 3R

Ext. (mm)	1200 x 800 x 160
Weight (Kg)	18
Static load (Kg)	5000
Dynamic load (Kg)	1250
Racking load (Kg)	850
Incr. stack height (mm)	160
Safety rim	No
Nestable	No



7842001 - H1 Pallet - 3R, R, LA

Ext. (mm)	1200 x 800 x 166
Weight (Kg)	18
Static load (Kg)	5000
Dynamic load (Kg)	1250
Racking load (Kg)	850
Incr. stack height (mm)	159
Safety rim	Yes (7mm)
Nestable	No



Did You Know?

This version of the H1 pallet has Locator aids that are designed to secure stacks of containers on top, ensuring extra steadiness and security. Fully compliant with the G51 norm, it's hygienic, standardized, and safe. Ideal for fresh products, its design meets logistics needs, being strong, rackable, lightweight, and suitable for automated handling.

Meastro - Cleanroom

9371000 - Maestro - 3R

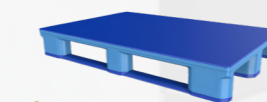
Ext. (mm)	1195 x 795 x 158
Weight (Kg)	19
Static load (Kg)	5000
Dynamic load (Kg)	1500
Racking load (Kg)	1000
Incr. stack height (mm)	158
Safety rim	No
Nestable	No



9373000 - Maestro - 3R, AS

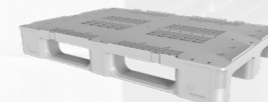
Ext. (mm)	1195 x 795 x 158
Weight (Kg)	19
Static load (Kg)	5000
Dynamic load (Kg)	600
Racking load (Kg)	500
Incr. stack height (mm)	158
Safety rim	No
Nestable	No

Version with anti-slip



7842002 - H1 Pallet - 3R, R

Ext. (mm)	1200 x 800 x 166
Weight (Kg)	18
Static load (Kg)	5000
Dynamic load (Kg)	1250
Racking load (Kg)	850
Incr. stack height (mm)	160
Safety rim	Yes (7mm)
Nestable	No



9372000 - Maestro - 3R, R

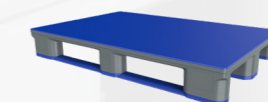
Ext. (mm)	1195 x 795 x 165
Weight (Kg)	19
Static load (Kg)	5000
Dynamic load (Kg)	1500
Racking load (Kg)	1000
Incr. stack height (mm)	158
Safety rim	Yes (7mm)
Nestable	No



9375000 - Maestro - 3R, AS, RF

Ext. (mm)	1195 x 795 x 158
Weight (Kg)	25
Static load (Kg)	5000
Dynamic load (Kg)	1300
Racking load (Kg)	1200
Incr. stack height (mm)	158
Safety rim	No
Nestable	No

Reinforced version with anti-slip



1200X1000 PALLETS

Key benefits for 1200x1000 sized pallets:

- Versatile Range:** Schoeller Allibert provides a range of pallet sizes to suit various needs and applications.
- Cleanroom Compatible:** Smooth, easy-to-clean designs suitable for cleanroom environments.
- Stability Assurance:** Pallets with safety rims keep goods secure during handling and stacking.
- Pallet collar compatibility:** our 1200x1000 pallets can be fitted with a pallet collar, transforming the pallet into a folding container that is ideal for retail delivery and display.
- Rounded corners:** Suitable for secure stretch wrapping

Lightweight Pallets

5592500 - EOS L - 9F

Ext. (mm)	1200 x 1000 x 130
Weight (Kg)	6.4
Static load (Kg)	500
Dynamic load (Kg)	500
Racking load (Kg)	0
Incr. nest height (mm)	45
Nesting (%)	65
Safety rim	Yes (4mm)



5592510 - EOS L - 3R

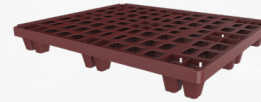
Ext. (mm)	1200 x 1000 x 150
Weight (Kg)	7.8
Static load (Kg)	500
Dynamic load (Kg)	500
Racking load (Kg)	0
Incr. stack height (mm)	144
Safety rim	Yes (4mm)
Nestable	No



PackPal - Lightweight

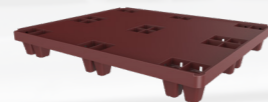
9379001 - Packpal - 9F, Perforated

Ext. (mm)	1200 x 1000 x 147
Weight (Kg)	7.3
Static load (Kg)	1500
Dynamic load (Kg)	650
Racking load (Kg)	0
Incr. nest height (mm)	55
Nesting (%)	63
Safety rim	Yes (7mm)



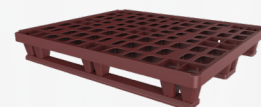
9379000 - Packpal - 9F, Solid

Ext. (mm)	1200 x 800 x 147
Weight (Kg)	8.9
Static load (Kg)	1500
Dynamic load (Kg)	650
Racking load (Kg)	0
Incr. stack height (mm)	55
Safety rim	Yes (7mm)
Nestable	Yes (7mm)



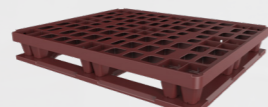
9497000 - Packpal - 3R, Perforated

Ext. (mm)	1200 x 1000 x 172
Weight (Kg)	9.3
Static load (Kg)	1500
Dynamic load (Kg)	1000
Racking load (Kg)	0
Incr. stack height (mm)	165
Safety rim	Yes (7mm)
Nestable	No



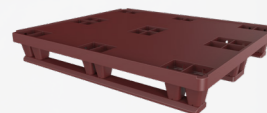
9387000 - Packpal - 6R, Perforated

Ext. (mm)	1200 x 1000 x 172
Weight (Kg)	11.9
Static load (Kg)	1500
Dynamic load (Kg)	1000
Racking load (Kg)	0
Incr. stack height (mm)	165
Safety rim	Yes (7mm)
Nestable	No



9497001 - Packpal - 3R, Solid

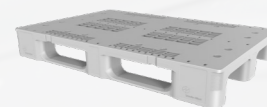
Ext. (mm)	1200 x 1000 x 172
Weight (Kg)	10.3
Static load (Kg)	1500
Dynamic load (Kg)	1000
Racking load (Kg)	0
Incr. stack height (mm)	165
Safety rim	Yes (7mm)
Nestable	No



BaYoPal - Medium

8279130 - BaYoPal - 3R

Ext. (mm)	1200 x 1000 x 165
Weight (Kg)	23.1
Static load (Kg)	6000
Dynamic load (Kg)	1500
Racking load (Kg)	1200
Incr. stack height (mm)	165
Safety rim	No
Nestable	No



8279110 - BaYoPal - 3R, R

Ext. (mm)	1200 x 1000 x 170
Weight (Kg)	23.1
Static load (Kg)	6000
Dynamic load (Kg)	1500
Racking load (Kg)	1200
Incr. stack height (mm)	165
Safety rim	Yes (5mm)
Nestable	No



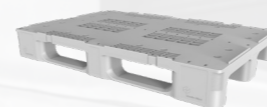
8279120 - BaYoPal - 3R, R

Ext. (mm)	1200 x 1000 x 187
Weight (Kg)	23.1
Static load (Kg)	6000
Dynamic load (Kg)	1500
Racking load (Kg)	1200
Incr. stack height (mm)	165
Safety rim	Yes (22mm)
Nestable	No



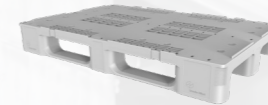
8380251 - Rackpal - 3R, HD, R

Ext. (mm)	1206 x 800 x 159
Weight (Kg)	17.7
Static load (Kg)	6000
Dynamic load (Kg)	1500
Racking load (Kg)	1100
Incr. stack height (mm)	152
Safety rim	Yes (7mm)
Nestable	No



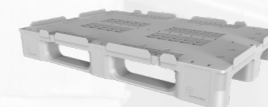
8380200 - Rackpal - 3R, R

Ext. (mm)	1206 x 800 x 159
Weight (Kg)	14.2
Static load (Kg)	6000
Dynamic load (Kg)	1500
Racking load (Kg)	800
Incr. stack height (mm)	152
Safety rim	Yes (7mm)
Nestable	No



8380300 - Rackpal - 3R, R

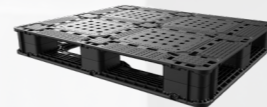
Ext. (mm)	1206 x 805 x 174
Weight (Kg)	14.4
Static load (Kg)	6000
Dynamic load (Kg)	1500
Racking load (Kg)	800
Incr. stack height (mm)	152
Safety rim	Yes (22mm)
Nestable	No



Fortis - Heavy

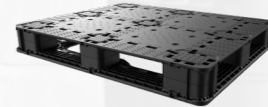
8246153 - Fortis - 5R, RF, OD

Ext. (mm)	1200 x 1000 x 150
Weight (Kg)	24.9
Static load (Kg)	7000
Dynamic load (Kg)	2500
Racking load (Kg)	1250
Incr. stack height (mm)	150
Safety rim	No
Nestable	No



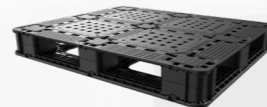
8246253 - Fortis - 5R, RF, CD

Ext. (mm)	1200 x 1000 x 150
Weight (Kg)	26.2
Static load (Kg)	7000
Dynamic load (Kg)	2500
Racking load (Kg)	1250
Incr. stack height (mm)	150
Safety rim	No
Nestable	No



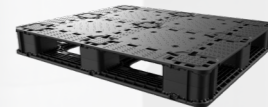
8246163 - Fortis - 6R, RF, OD

Ext. (mm)	1200 x 1000 x 150
Weight (Kg)	25.7
Static load (Kg)	7000
Dynamic load (Kg)	2000
Racking load (Kg)	1350
Incr. stack height (mm)	150
Safety rim	No
Nestable	No



8246263 - Fortis - 6R, RF, CD

Ext. (mm)	1200 x 1000 x 150
Weight (Kg)	26.9
Static load (Kg)	7000
Dynamic load (Kg)	2500
Racking load (Kg)	1250
Incr. stack height (mm)	150
Safety rim	No
Nestable	No



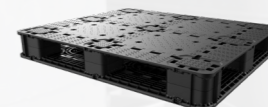
8246123 - Fortis - Double open deck

Ext. (mm)	1200 x 1000 x 150
Weight (Kg)	27.9
Static load (Kg)	7000
Dynamic load (Kg)	2500
Racking load (Kg)	1300
Incr. stack height (mm)	150
Safety rim	No
Nestable	No



8246223 - Fortis - Double closed deck, RF

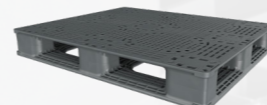
Ext. (mm)	1200 x 1000 x 150
Weight (Kg)	28.9
Static load (Kg)	7000
Dynamic load (Kg)	2500
Racking load (Kg)	1300
Incr. stack height (mm)	150
Safety rim	No
Nestable	No



Robusto - Heavy

8005600 - Robusto - 6R

Ext. (mm)	1200 x 1000 x 150
Weight (Kg)	26.5
Static load (Kg)	5000
Dynamic load (Kg)	1500
Racking load (Kg)	1250
Incr. stack height (mm)	150
Safety rim	No
Nestable	No



8005000 - Robusto - Double deck

Ext. (mm)	1200 x 1000 x 150
Weight (Kg)	28.2
Static load (Kg)	5000
Dynamic load (Kg)	1500
Racking load (Kg)	1250
Incr. stack height (mm)	150
Safety rim	No
Nestable	No



8007640 - Robusto - 6R

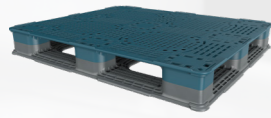
Ext. (mm)	1219 x 1016 x 150
Weight (Kg)	27.2
Static load (Kg)	5000
Dynamic load (Kg)	1500
Racking load (Kg)	1250
Incr. stack height (mm)	150
Safety rim	No
Nestable	No



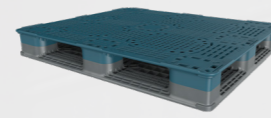
8007040 - Robusto - Double Deck

Ext. (mm)	1219 x 1016 x 150
Weight (Kg)	28.9
Static load (Kg)	5000
Dynamic load (Kg)	1500
Racking load (Kg)	1250
Incr. stack height (mm)	150
Safety rim	No
Nestable	No





8007641 - Robusto - 6R, R	
Ext. (mm)	1219 x 1016 x 150
Weight (Kg)	27.2
Static load (Kg)	5000
Dynamic load (Kg)	1500
Racking load (Kg)	1250
Incr. stack height (mm)	150
Safety rim	Yes (8mm)
Nestable	No

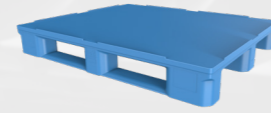


8007041 - Robusto - Double deck, R	
Ext. (mm)	1219 x 1016 x 150
Weight (Kg)	28.9
Static load (Kg)	5000
Dynamic load (Kg)	1500
Racking load (Kg)	1250
Incr. stack height (mm)	150
Safety rim	Yes (8mm)
Nestable	No

Meastro - Cleanroom



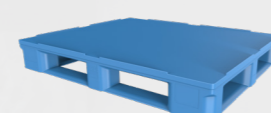
9376000 - Maestro - 3R	
Ext. (mm)	1195 x 995 x 158
Weight (Kg)	23.5
Static load (Kg)	5000
Dynamic load (Kg)	1500
Racking load (Kg)	1200
Incr. stack height (mm)	158
Safety rim	No
Nestable	No



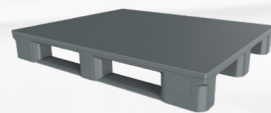
9377000 - Maestro - 3R, R	
Ext. (mm)	1195 x 995 x 165
Weight (Kg)	23.5
Static load (Kg)	5000
Dynamic load (Kg)	1500
Racking load (Kg)	1200
Incr. stack height (mm)	158
Safety rim	Yes (7mm)
Nestable	No



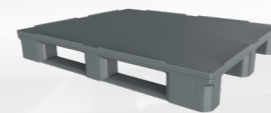
9376004 - Maestro - 5R	
Ext. (mm)	1195 x 995 x 158
Weight (Kg)	24.3
Static load (Kg)	5000
Dynamic load (Kg)	1500
Racking load (Kg)	1200
Incr. stack height (mm)	158
Safety rim	No
Nestable	No



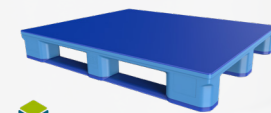
8787000 - Maestro - 5R, R	
Ext. (mm)	1195 x 995 x 165
Weight (Kg)	24.3
Static load (Kg)	5000
Dynamic load (Kg)	1500
Racking load (Kg)	1200
Incr. stack height (mm)	158
Safety rim	Yes (7mm)
Nestable	No



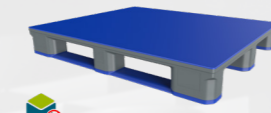
8657000 - Maestro - 3R, RF	
Ext. (mm)	1195 x 995 x 158
Weight (Kg)	30
Static load (Kg)	5000
Dynamic load (Kg)	2000
Racking load (Kg)	1600
Incr. stack height (mm)	158
Safety rim	No
Nestable	No



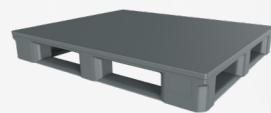
9376003 - Maestro - 3R, R, RF	
Ext. (mm)	1195 x 995 x 158
Weight (Kg)	30
Static load (Kg)	5000
Dynamic load (Kg)	2000
Racking load (Kg)	1600
Incr. stack height (mm)	158
Safety rim	Yes (7mm)
Nestable	No



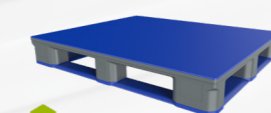
9376310 - Maestro - 3R, AS	
Ext. (mm)	1195 x 995 x 158
Weight (Kg)	23.5
Static load (Kg)	5000
Dynamic load (Kg)	800
Racking load (Kg)	600
Incr. stack height (mm)	158
Safety rim	No
Nestable	No



8790000 - Maestro - 3R, AS, RF	
Ext. (mm)	1195 x 995 x 158
Weight (Kg)	30.5
Static load (Kg)	5000
Dynamic load (Kg)	2000
Racking load (Kg)	1600
Incr. stack height (mm)	158
Safety rim	No
Nestable	No



8784000 - Maestro - 5R, RF	
Ext. (mm)	1195 x 995 x 158
Weight (Kg)	31
Static load (Kg)	5000
Dynamic load (Kg)	2000
Racking load (Kg)	1600
Incr. stack height (mm)	158
Safety rim	No
Nestable	No



9376314 - Maestro - 5R, AS, RF	
Ext. (mm)	1195 x 995 x 165
Weight (Kg)	31.5
Static load (Kg)	5000
Dynamic load (Kg)	1600
Racking load (Kg)	1400
Incr. stack height (mm)	158
Safety rim	No
Nestable	No

1140X1140 PALLETS

Key benefits for 1140x1140 sized pallets:

- Container pallets:** Sized at 1140x1140, these pallets seamlessly fit 20ft and 40ft shipping containers.
- Export Efficiency:** Tailored for export purposes, these pallets optimize container space, maximizing efficiency in international shipments.
- Global Compatibility:** Designed with international shipping demands in mind, they are compatible with global transport systems, ensuring smooth logistics operations.

Lightweight



1853508 - 1140 Light - 9F, R	
Ext. (mm)	1140 x 1140 x 150
Weight (Kg)	7.5
Static load (Kg)	2500
Dynamic load (Kg)	1000
Racking load (Kg)	0
Incr. nest height (mm)	65
Nesting (%)	57
Safety rim	Yes (5mm)



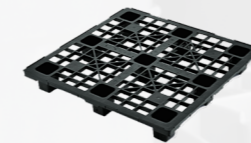
1842552 - 1140 Light - 3R, R	
Ext. (mm)	1140 x 1140 x 165
Weight (Kg)	9.5
Static load (Kg)	2500
Dynamic load (Kg)	1000
Racking load (Kg)	0
Incr. stack height (mm)	160
Safety rim	Yes (5mm)
Nestable	No

1200X1200 PALLETS

Key benefits for 1200x1200 sized pallets:

- Versatile:** for various applications, including retail supply chains.
- Suitable for export:** eliminating the need for fumigation and preventing contamination.
- Safety rim:** ensures goods remain secure and provides stability when stacked.
- Nestable design:** saves storage space and reduces reverse logistics costs.

Lightweight



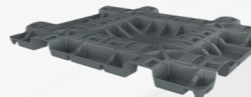
1856508 - EOS Light - 9F, R	
Ext. (mm)	1200 x 1200 x 155
Weight (Kg)	23.1
Static load (Kg)	2500
Dynamic load (Kg)	1000
Racking load (Kg)	0
Incr. nest height (mm)	63
Nesting (%)	60
Safety rim	Yes (5mm)

SMARTLEAF

Key benefits our SmartLeaf:

- Tailored Design:** Specially crafted for bag transport, with dimensions of 1300x1100.
- Heavy-Duty Capacity:** Capable of transporting bags like plastics granulate weighing up to 1500kg
- Space Efficiency:** Unique shape accommodates an extra layer of bags without increasing total height.
- Hygienic Design:** Easy to clean and food-safe, ideal for food applications.

SmartLeaf



1927001 - SmartLeaf	
Ext. (mm)	1300 x 1100 x 102
Weight (Kg)	6.9
Static load (Kg)	2700
Dynamic load (Kg)	1350
Racking load (Kg)	1250
Incr. nest height (mm)	26
Nesting (%)	75
Safety rim	No



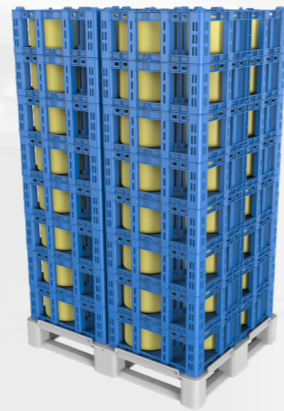
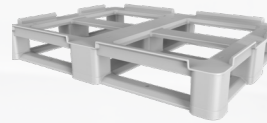
CHEESE PALLET

Key benefits our Cheese Pallet:

- Tailored Design:** Specifically designed for turning cheese crates, optimizing efficiency.
- High Capacity:** Full automation allows for fast handling of up to 650 kg of cheese in one operation.
- Space Optimization:** Maximizes the use of cool chamber capacity, stacking up to 1900 kg of cheese per square meter by stacking 2 full pallets.
- Safety Assurance:** Developed for two crates with a footprint of 700x500, ensuring full safety during over-palletizing up to 6 layers high.

Cheese Pallet

9887001 - Cheese pallet - 6R, R	
Ext. (mm)	1050 x 801 x 165
Weight (Kg)	11
Static load (Kg)	1500
Dynamic load (Kg)	1200
Racking load (Kg)	700
Incr. stack height (mm)	140
Safety rim	Yes (24mm)
Nestable	No



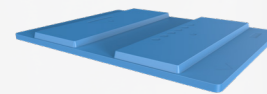
PALLET COVERS

Key benefits for pallet covers:

- Wide Range:** Schoeller Allibert offers a diverse selection of pallet covers, available in various footprints to suit different applications.
- Versatility:** Pallet covers provide a versatile and cost-effective solution for securing stacks of containers on a pallet, eliminating the need for additional plastic wrapping.
- Protection:** Pallet covers shield the load from dust, pollution, and humidity, ensuring secure handling and preservation of goods.

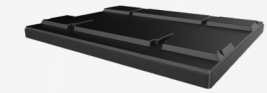
800x600

9344000 - Pallet Cover A0806-1	
Ext. (mm)	808 x 608 x 40
Weight (Kg)	2.3
Incr. stack height (mm)	20
Feature	Centre cross



1200x800

9351005 - Pallet Cover A1208	
Ext. (mm)	1205 x 808 x 94
Weight (Kg)	6.1
Incr. stack height (mm)	54
Compatibility	VDA KLTs



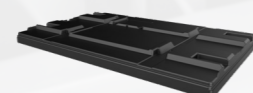
6018823 - Pallet Cover 1208+	
Ext. (mm)	1228 x 817 x 87
Weight (Kg)	5.7
Incr. stack height (mm)	47
Feature	Straps
Compatibility	Euro Containers



9366000 - Pallet Cover Packpal	
Ext. (mm)	1220 x 813 x 53
Weight (Kg)	3.8
Compatibility	PackPal



6018820 - Pallet Cover 1208+	
Ext. (mm)	1230 x 817 x 87
Weight (Kg)	5.72
Incr. stack height (mm)	47
Compatibility	Euro Containers



9524004 - Pallet Cover Maestro	
Ext. (mm)	1220 x 813 x 53
Weight (Kg)	3.8
Compatibility	Maestro Pallet

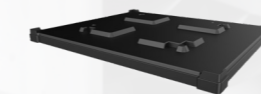


936600S - Pallet Cover Packpal	
Ext. (mm)	1220 x 813 x 53
Weight (Kg)	4.3
Feature	Straps
Compatibility	Packpal



1200x1000

6017830 - Pallet Cover	
Ext. (mm)	1229 x 1030 x 84
Weight (Kg)	7.2
Incr. stack height (mm)	44
Feature	Corners



6017833 - Pallet Cover	
Ext. (mm)	1229 x 1030 x 84
Weight (Kg)	7.2
Incr. stack height (mm)	44
Feature	Corners and straps



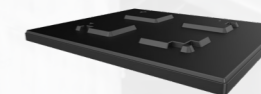
9540996 - Pallet Cover Packpal	
Ext. (mm)	1210 x 1010 x 45
Weight (Kg)	6.2
Compatibility	PackPal Pallet with 3 runners



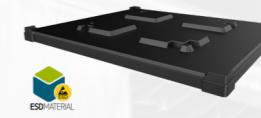
9345000 - Pallet Cover A1210	
Ext. (mm)	1207 x 1000 x 67
Weight (Kg)	9.4
Incr. stack height (mm)	43
Compatibility	VDA KLT Containers



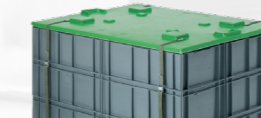
6017820 - Pallet Cover	
Ext. (mm)	1229 x 1030 x 84
Weight (Kg)	7.2
Incr. stack height (mm)	44
Feature	Without corners



6017830E - Pallet Cover PCA	
Ext. (mm)	1225 x 1025 x 90
Weight (Kg)	8.2
Incr. stack height (mm)	44
Feature	With corners, in ESD material



9540972 - Pallet Cover Packpal	
Ext. (mm)	1210 x 1010 x 45
Weight (Kg)	6.2
Feature	Straps
Compatibility	PackPal Pallet with 3 runners



9350000 - Pallet Cover PCA	
Ext. (mm)	1225 x 1025 x 90
Weight (Kg)	6
Incr. stack height (mm)	60



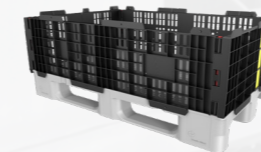
PALLET COLLARS

Key benefits for pallet collars:

- Wide Range:** Schoeller Allibert offers a diverse selection of pallet collars, available in various footprints to suit different applications.
- Efficiency:** Pallet collars swiftly transform a pallet into a robust bulk container, offering versatility in seconds.
- Space-Saving Design:** Pallet collars fold flat and can be nested when not in use, minimizing transport space requirements for their return journey.

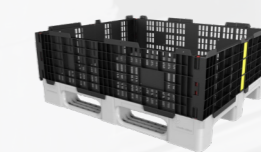
1200x800

9420001 - Pallet Collar	
Ext. (mm)	1218 x 817 x 350
Int (mm)	1155 x 754 x 300
Weight (Kg)	6.2
Incr. stack height (mm)	300
Incr. height folded (mm)	124
Folding ratio (%)	58
Load capacity (kg)	500
Max # collars	4
Compatibility	Pallets without safety rim



1200x1000

9728001 - Pallet Collar	
Ext. (mm)	1218 x 1017 x 350
Int (mm)	1155 x 954 x 300
Weight (Kg)	7.2
Incr. stack height (mm)	300
Incr. height folded (mm)	124
Folding ratio (%)	58
Load capacity (kg)	500
Max # collars	4
Compatibility	Pallets without safety rim



Did You Know?

Schoeller Allibert's pallet collar instantly transforms a pallet into a durable bulk container, ideal for irregular loads and time-sensitive operations. Plus, the collapsible pallet cover saves transport space by nesting when not in use.