

INTERMEDIATE BULK CONTAINER

# The container that transforms logistics

# Engineered for excellence

Foldable liquid IBC for safe, hygienic, and cost-efficient storage in food, pharma, cosmetics, and chemical industries. Ideal for aseptic use; easy to fold, clean, and repair. »

## Unmatched strength

Robust construction with T-shaped locking for maximum safety when stacked. Water-tight, self-locking lid with multiple securing points ensures complete protection.



## Automated handling

Fully compatible with industry-standard handling systems for seamless integration into your processes.

## Supply chain revolution

Optimise payload capacity and slash reverse logistics costs. Reduce your CO<sub>2</sub> impact with the market's best folding ratio.

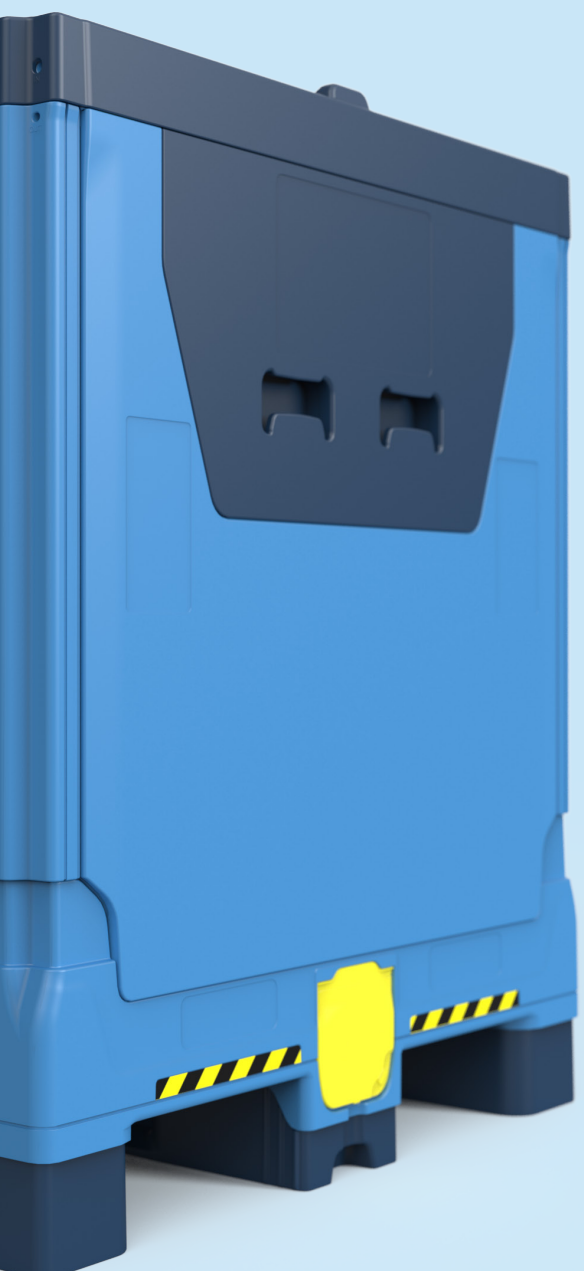
## Smart fleet management

Track and monitor your assets with multiple identification options. Built-in bar code labels and RFID & IOT pockets give you complete visibility.

## Hygiene without compromise

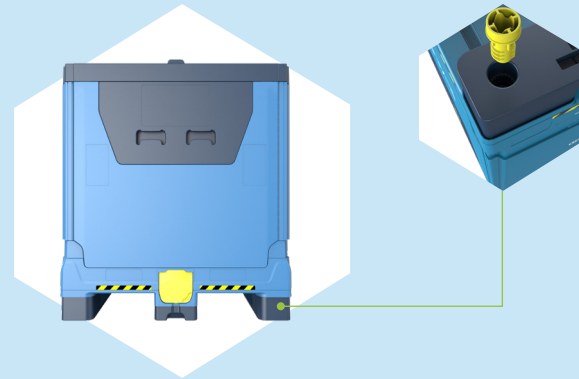
100% smooth design from base to lid eliminates dirt traps and contamination risks. Double-wall construction increases internal volume and ensures compatibility with high-speed filling lines. Fork tine guides enhance safety and handling efficiency.





## Single-operator efficiency

One person can quickly erect or fold the unit. Self-locking drop door provides easy access while the improved discharge zone speeds up liner and valve setup. Reusable dustcover keeps the discharge area protected from contaminants.

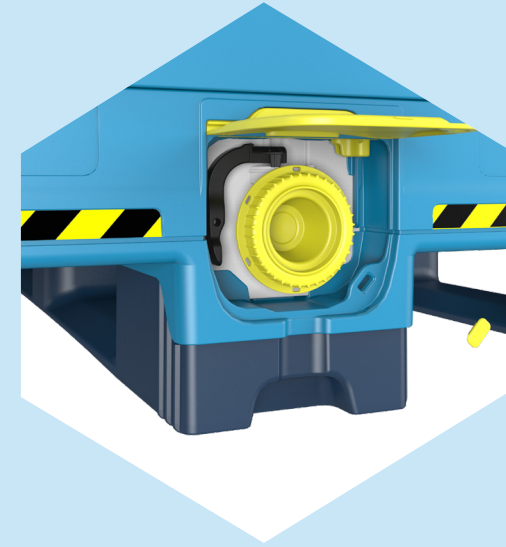


## Built for longevity

Replace individual components to maximise service life. Patented bayonet fixing system allows for quick and simple skid replacement.

## The most hygienic and safe foldable IBC

100% safe, easy to clean design from base to lid, no dirt or water traps, bugs and needle contamination proof. 100% smooth and double-wall sturdy design increases internal volume and ensures compatibility with high-speed filling processes. Safe and speed handling thanks to the fork tine guides on base.



## Advanced discharge system

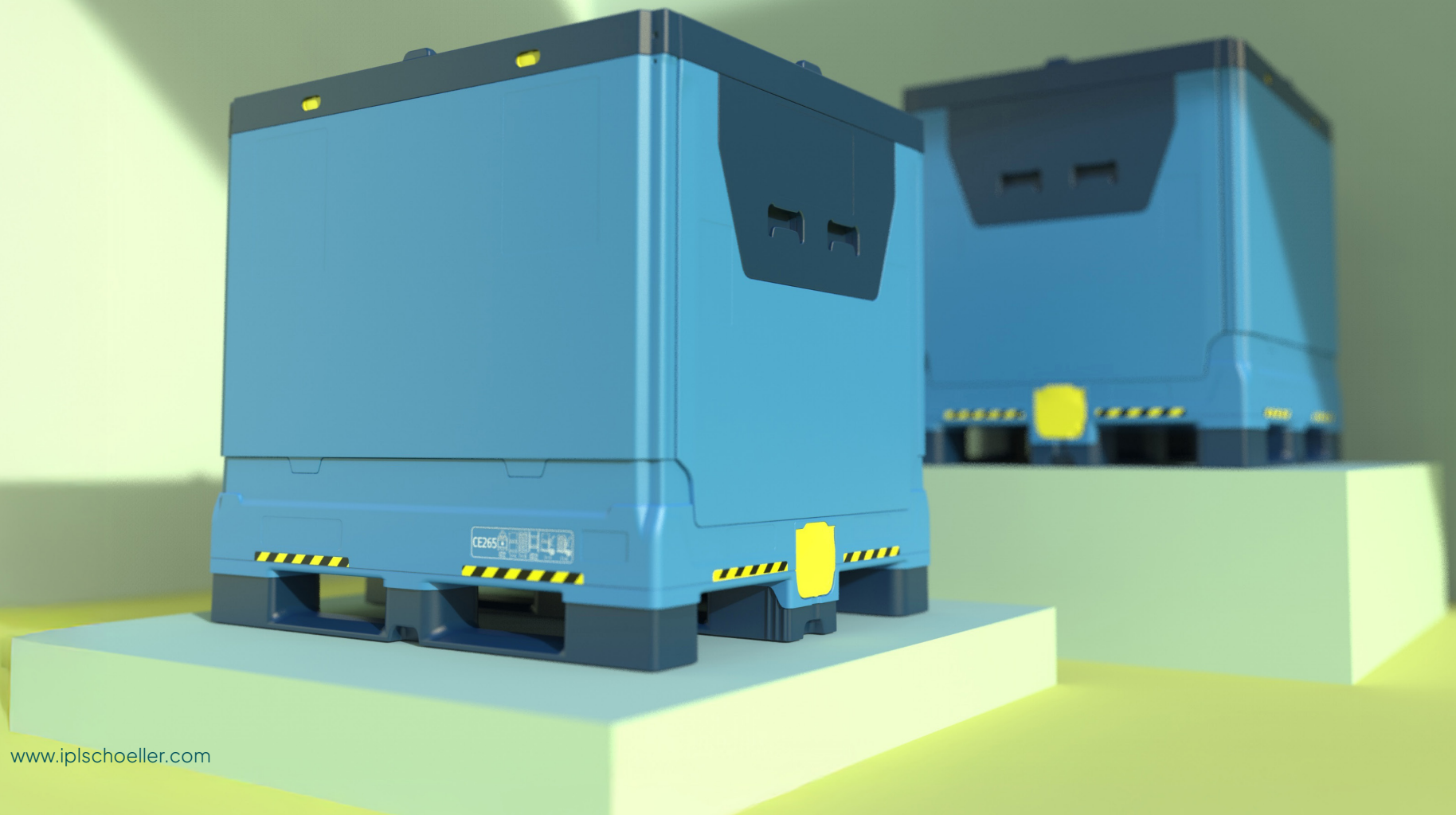
Compatible with DN50 with Releasy® clip and Speedy® valve. Our innovative Releasy® mechanism delivers safer handling while significantly reducing damage risk during operation.



DN50 Valve with adapter

Speedy® valve





# Technical data



## 5602.301 - 1000 L

Ext. (mm)	1219 x 1016 x 1147
Int. (mm)	1142 x 935 x 943
Weight (Kg)	105
Folded height (mm)	374
Stacked height (mm)	1126.7
Folding ratio (%)	70

Lid included, Hybrid bottom discharge

## Mechanical performances

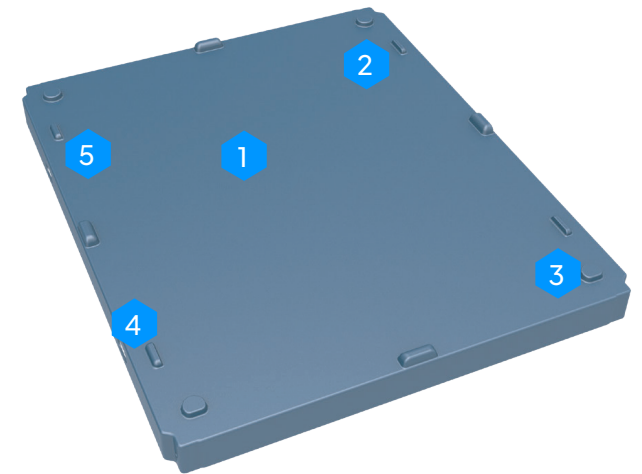
Unit load	1500 kg
Stack load	6500kg (4/1)
Dynamic load	3200 kg (1/1)

## Features

- ◆ Solid walls
- ◆ Reinforced solid smooth base
- ◆ 3 runners
- ◆ Lid included
- ◆ Usable in temperature environment from -20°C up to +40°C

- ◆ Anti-bacterial
- ◆ SmartLink availability
- ◆ Customisation options

## Lid: unique features

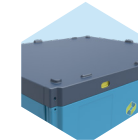


1 Durable double-wall lid is 100% smooth, water, dirt and bug tight

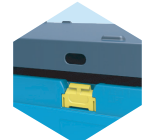
5 Tamper evidence and strapping option ensure safety for high value fluids, ingredients and cosmetics.



2 Easy stacking thanks to centering blocks in corners and center of sides fitting in skids recesses.



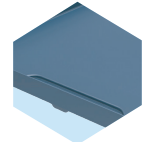
6 The lid features self-locking latches for easier handling and extra safety.



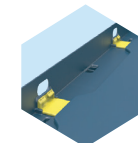
3 Overlapping the side latches, the lid ensures extra safety and strength to the IBC.



7 Internal step/lip preventing walls from bending inwards in case of shock.



4 The lid can slide on sides thanks to the angled end of lip for improved ergonomics.



All of IPL Schoeller™'s products are available in a standard range of colours, other colours are possible upon request. RAL, PMS and Pantone colours are references for the closest comparator.

White RAL 9016 Pantone 705	Black RAL 9005 Pantone Black	Grey 502 RAL 7040 Pantone 423	Grey 522 RAL 7012 Pantone 445	Green 415 RAL 6011 Pantone 626	Green 481 RAL 6005 Pantone 3308	Blue 646 Pantone 2728C	Blue 626 RAL 5012 Pantone 307
Blue 661 RAL 5003 Pantone 540	Blue 662 RAL 5005 Pantone 294	Red 246 RAL 3020 Pantone 485	Orange 311 RAL 2004 Pantone 1655	Yellow Pastel 316 RAL 1034 Pantone 715	Yellow 355 RAL 1018 Pantone 123	Beige 319 RAL 1015 Pantone 726	Brown 801 RAL 3009 Pantone 181



**IPL**  
**Schoeller™**

# Smart designs for a Circular Economy

IPL Schoeller is a global leader in sustainable packaging. We design smart circular solutions that support efficient and smart supply chains. With 26 production facilities across North America, the United Kingdom and Europe, we deliver reliable, scalable and sustainable solutions for customers across multiple industries. Our purpose is to create solutions that never become waste.

Let's connect! Contact us

[www.iplschoeller.com](http://www.iplschoeller.com)  
[info@iplschoeller.com](mailto:info@iplschoeller.com)



This presentation and the information contained within (including without limitation any designs, drawings, trademarks, innovations, concepts or other intellectual property) are confidential and proprietary to IPL Schoeller and/or its affiliates and protected by copyright, trademark, patent, trade secret, and other applicable laws. No rights, title, or interest and no licence or other permission are transferred. All intellectual property remains the property of IPL Schoeller and its relevant affiliates. This presentation is provided solely for information and evaluation purposes only and its contents may not be used, disclosed, reproduced, copied, published, forwarded, reverse-engineered, decompiled or distributed, in whole or in part, to any third party without the prior express written consent of IPL Schoeller. The recipient of any copy of this presentation shall limit internal access to those individuals with a genuine need to know and shall ensure that such individuals are made aware of and comply with the obligations set out in this notice. Upon request, this presentation and all copies must be returned or permanently destroyed. This presentation does not constitute an offer, undertaking, representation or warranty, and no reliance should be placed on its contents unless and until formally agreed in writing. No representation or warranty, express or implied, is or will be given by IPL Schoeller, any of its affiliates or any of its or its affiliates' respective members, directors, officers, employees, associates, agents, investors or advisers or any other person as to the accuracy or completeness of the information included in this Presentation. IPL Schoeller is under no obligation to update, revise, or correct any of the information contained herein. Nothing in this presentation is intended to create legal relations or to impose any legal obligation on IPL Schoeller, any of its affiliates or any of its or its affiliates' respective members, directors, officers, employees, associates, agents, investors or advisers. To the fullest extent permitted by applicable law, neither IPL Schoeller nor any of its affiliates, nor any of their respective directors, officers, employees, or advisers, shall have any liability (whether in contract, tort, negligence, or otherwise) for any loss or damage whatsoever arising directly or indirectly from the use of, or reliance on, this Presentation or any information contained herein. This notice and any disputes arising out of or in connection with it shall be governed by and construed in accordance with the laws of [Ireland], and the parties submit to the exclusive jurisdiction of the courts of [Ireland]. This document is presented by IPL Schoeller.