

Chemical handling with safety that lasts



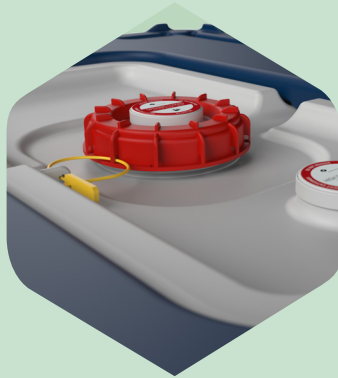
Schoeller Allibert

Versatility that fits your operation

Choose your perfect configuration with our 1200x1000 footprint in 3 or 6 runner versions. UN certified and built specifically for chemical distribution, these containers integrate seamlessly into your existing systems. »

Fill fast, empty completely

The centred opening aligns precisely with automated stations while intelligently sloped surfaces guide liquids efficiently to the outlet. Empty a ChemiFlow® with dual vents in under 3 minutes with minimal residual waste.



Maximise your shipping space

Stack them filled during transport without worry. Each container is optimised for logistics efficiency:

- 52 units per full truck load
- 38 units per 40-foot high-cube container
- 50 units per 45-foot high-cube pallet-wide container

Fill level

By utilizing the SmartLink dashboard's remote fill level monitoring, users can efficiently track liquid quantities in assets, eliminating the need for manual stock assessments and enhancing operational efficiency.

Corrosion becomes history

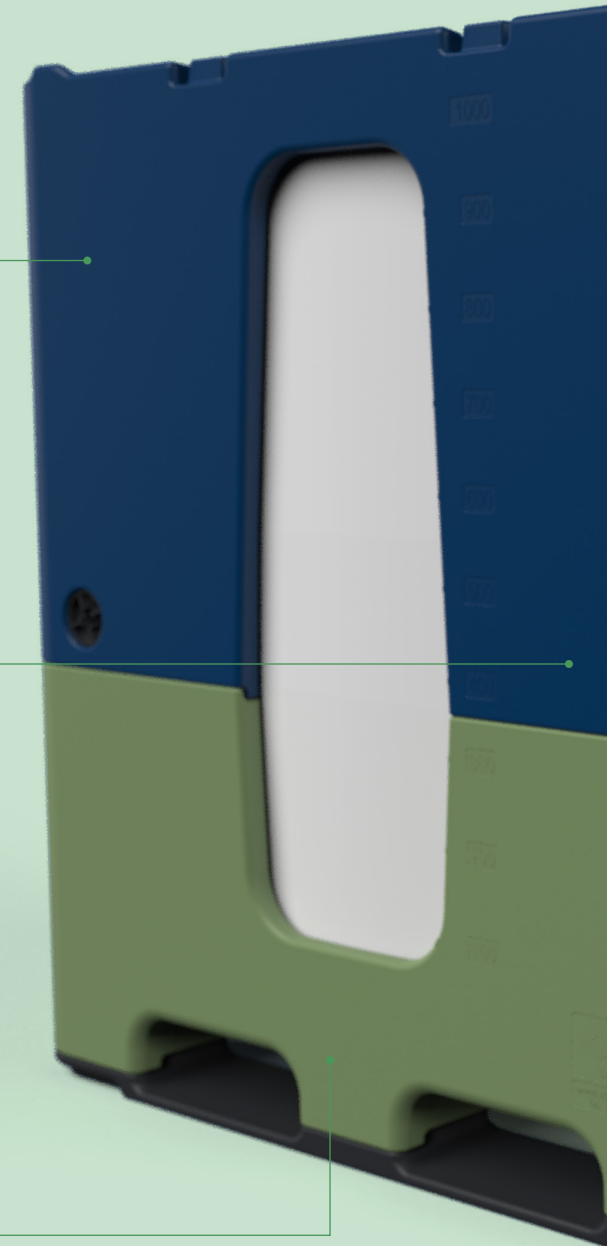
While traditional IBCs deteriorate, ChemiFlow's® 100% plastic construction stands strong year after year. Your chemicals stay secure; your containers stay intact.

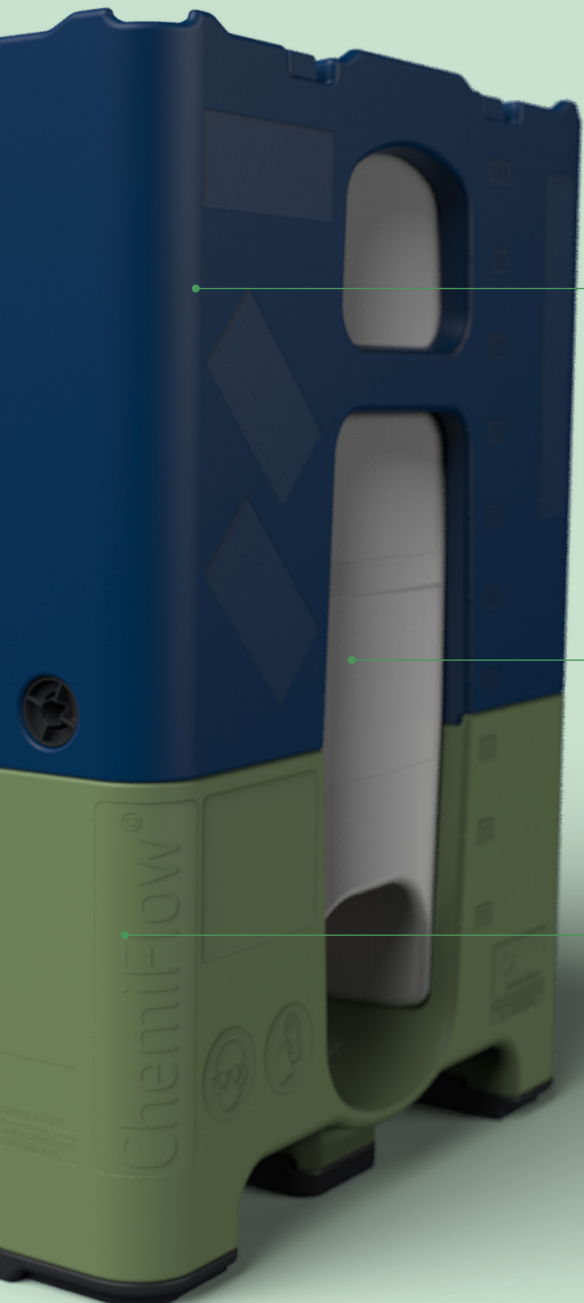
Make your mark

Customise with your brand colours for instant recognition while multiple label areas ensure critical information travels with your products throughout the supply chain.

Built to evolve and easy to repair.

Upgrade from 3 to 6 runners without replacing your entire container. The innovative Bayonet® system lets you replace only what's needed, keeping costs low and extending service life. And when that long life finally ends? 100% recyclable.





Certified for your confidence

Transport hazardous materials safely with our 31HH1/Y certification for materials up to 1.9 g/cm³ density. UN information comes permanently engraved for hassle-free compliance.

Never lose an asset again

Dedicated spaces for RFID tags and IoT beacons mean you'll always know where your containers are, eliminating lost assets and idle inventory.

Leak protection you can trust

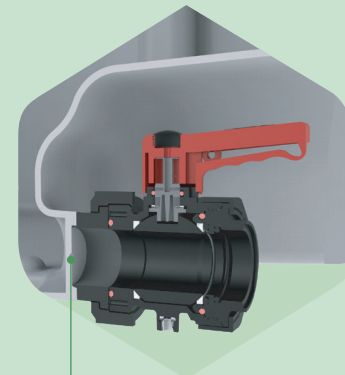
Our welded valve creates an exceptionally strong connection while the intelligent valve bolt prevents accidental opening. Perform reliably even in temperatures from -18°C to +40°C.

Complete containment control

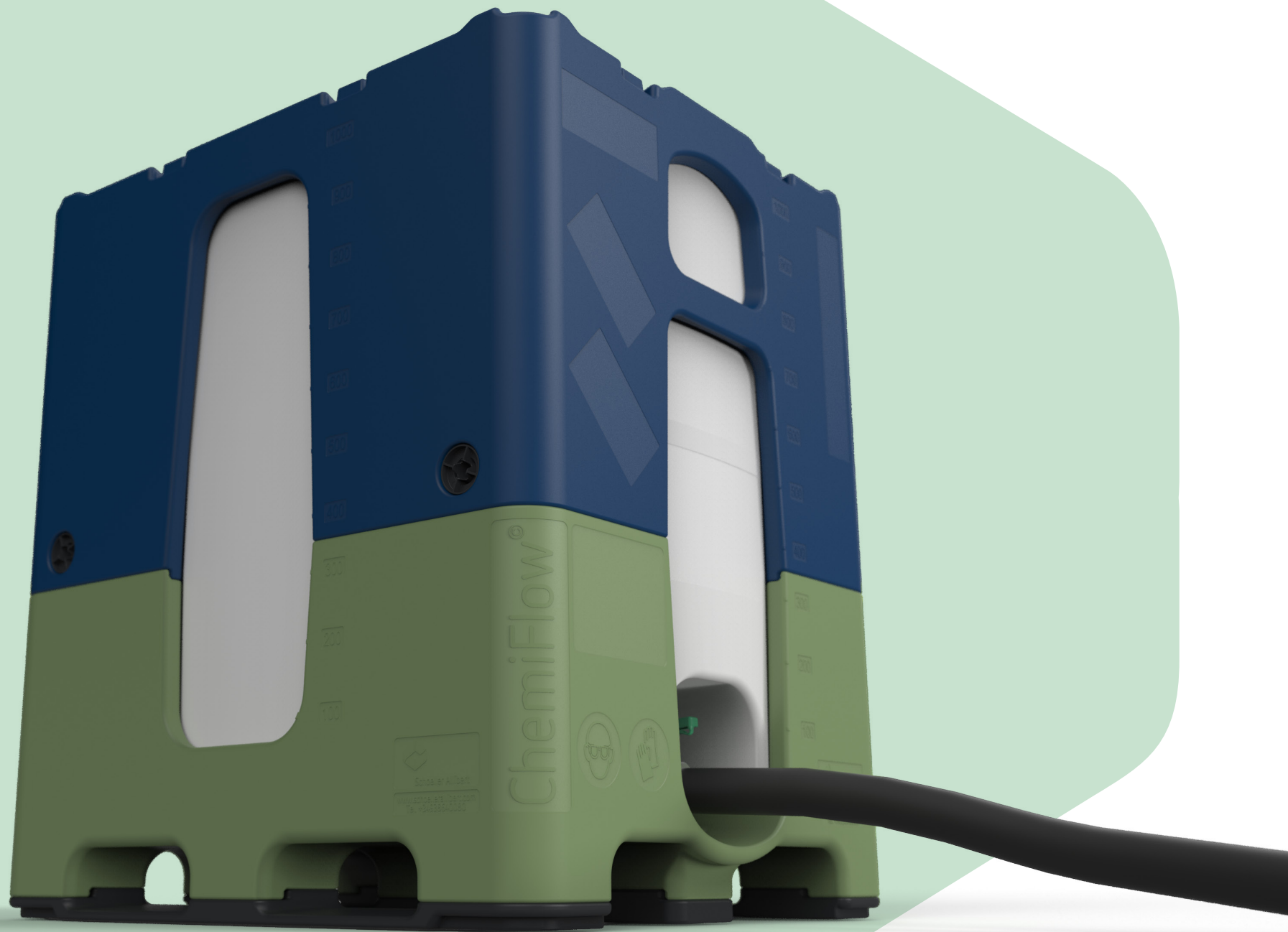
The optional CDS system prevents both liquids and fumes from escaping, giving you total environmental protection throughout your chemical handling process.



Usable in temperature environment of -18°C up to +40°C



Welded valve



Technical data



82920XX: 3 Runner version - 1000L

Ext. (mm)	1200 x 1000 x 1323
Weight (Kg)	134
Stacking height (mm)	1308
Maximum density	1.9 g/cm ³
Material	PE

Easy to handle with (electric) pallet jacks as well as with forklifts



82921XX: 6 Runner version - 1000L

Ext. (mm)	1200 x 1000 x 1323
Weight (Kg)	137
Stacking height (mm)	1308
Maximum density	1.9 g/cm ³
Material	PE

More secure on the forks of a forklift

Valve options

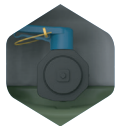
Please enquire about other types of valve we offer.



Valve DN50
EPDM
GRPP Body
PPH Ball
Ref. 8292.XAX



Valve DN50
Viton
GRPP Body
PPH Ball
Ref. 8292.XBX



Valve DN50
Viton
PE Body
PVDF Ball
Ref. 8292.XCX



Valve DN50
EPDM Food
Approved
GRPP Body
Ref. 8292.XDX

Vents and closure options



Viton - High Flow vent
167L/Min



Viton - no vent
Opening closed



EPDM - High Flow
167L/Min



EPDM - no vent
167L/Min

Indication of DN50 vents and DN150 closures

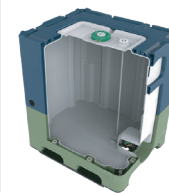
Ref. 8292.XXA	High Flow vent in the lid + High Flow vent in the tank
Ref. 8292.XXB	High Flow vent in the lid + solid plug in the tank
Ref. 8292.XXC	Solid plug in the lid + solid plug in the tank
Ref. 8292.XXD	High Flow vent in the lid + CDS extractor

Technical Features

- Stacked full: 1/1
- Stacked empty: 4/1
- Max. stack load: 2200 kg
- Gross capacity: 1034L
- UN, ADR, RID, IMDG certified
- UN number (rotolene material):
UN 31HH1/Y/[MM/YY]/E/
SA/02-G-289-01/2059/2200
- Standard liquids: Wetting
solution/Acetic Acid/Butyl
Acetate/White Spirit/Nitric Acid
65%/Water.

Chemical Dispensing System (CDS)

The CDS system ensures that content cannot be spilled. This closed system prevents both liquid and fumes from escaping.





Schoeller Allibert

Efficient by design, circular by nature

Let's connect! Contact us

www.schoellerallibert.com



© Schoeller Allibert – all rights reserved. This presentation and the information contained (including any designs, drawings, trademarks, innovations, etc.) herein is confidential and proprietary information owned by Schoeller Allibert and is protected by copyright, trademark, patent, trade secret and other laws. No right, title or interest therein is transferred to you. The presentation nor the contents thereof may be used, disclosed, reproduced, copied, published, forwarded or distributed to any other party without the express written consent of Schoeller Allibert.