



IPL
Schoeller™

Kaiman® ALC



HANDHELD STACK NEST CONTAINER

Space-saving crates designed for efficiency

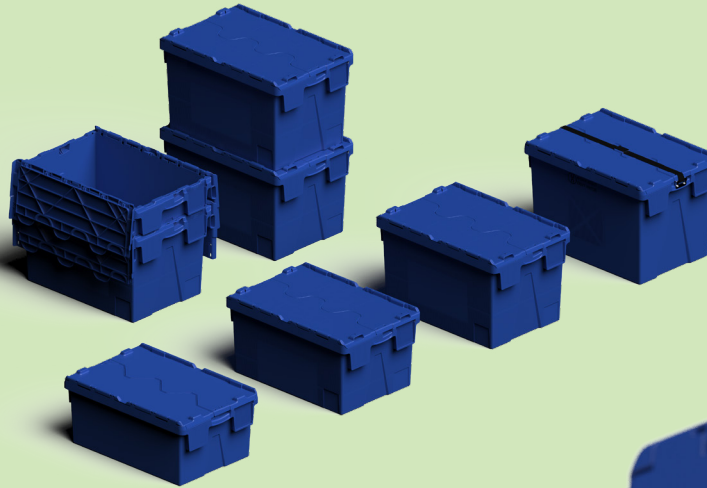
Smart designs for a Circular Economy

Attached Lid Containers 18L to 70L Range

Reliable, secure, and space-optimized—
Kaiman[®] is the go-to choose for modern,
sustainable logistics. »

Performance

- ◆ Cut fuel costs and shrink your carbon footprint.
- ◆ Individual loads range from 18kg to 30kg and static load (how many can be stacked on the bottom crate) from 120kg to 270kg depending on the model.
- ◆ Save up to 73% space when empty (nesting percentage ranges from 51% to 73% depending on the model)



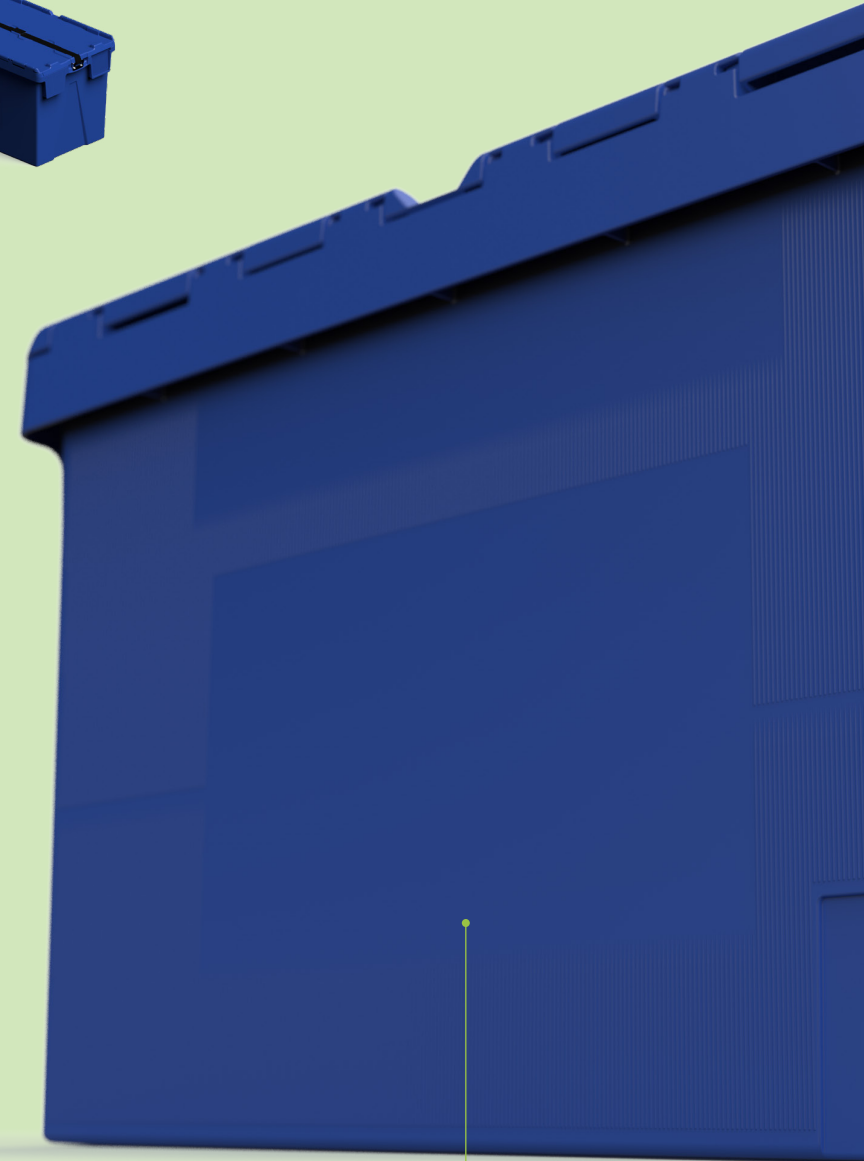
Identification¹

- ◆ Remove labels cleanly with no sticky residue thanks to ribbed finish on sides and lid.
- ◆ Protect identity cards and labels with built-in ticket window.
- ◆ Label anywhere with 80x70mm recesses on all 4 sides.
- ◆ Track your assets with RFID capability.

Branding¹

- ◆ Showcase your brand with 295x150mm print areas on both long sides.
- ◆ Keep identification visible even when nested with the 170x30mm printing area inside lid.

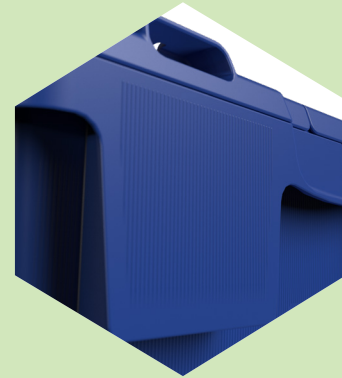
¹ Available on select models





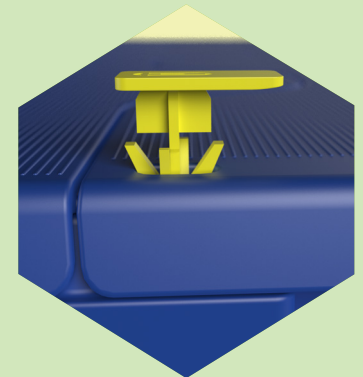
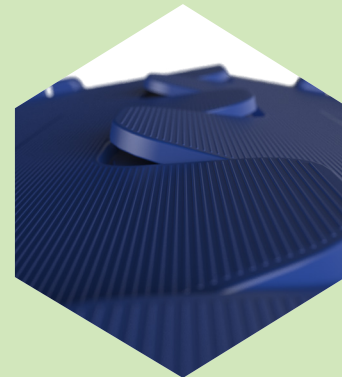
Automated handling

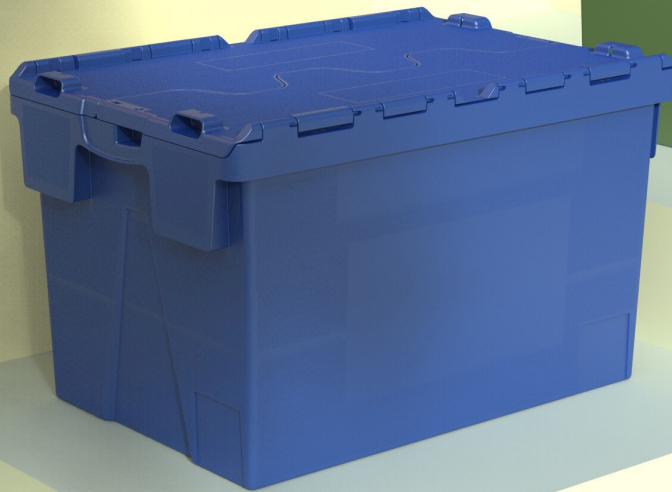
- ◆ Open lids automatically with precision positioning.
- ◆ Maintain workflow efficiency with lids that hang vertically when open.
- ◆ Transition smoothly on conveyors with bevelled leading edge.
- ◆ Improved stability on conveyors due to the ribbed base option on some models.



Security

- ◆ Prevent tampering with innovative "teeth" that interlock lid and base, making containers impossible to prise open when fitted with tamper-evident seals.





Technical data



9937004 18 L

Ext. (mm)	400 x 300 x 222
Int. (mm)	338 x 254 x 197
Weight (Kg)	1.6
Load capacity (Kg)	18
Static load (Kg)	126
Nesting ratio	51%



9107004 22 L

Ext. (mm)	400 x 300 x 264
Int. (mm)	334 x 253 x 239
Weight (Kg)	1.7
Load capacity (Kg)	18
Static load (Kg)	120
Nesting ratio	59%



9108004 25 L

Ext. (mm)	400 x 300 x 306
Int. (mm)	329 x 250 x 281
Weight (Kg)	1.9
Load capacity (Kg)	18
Static load (Kg)	126
Nesting ratio	65%



9109004 48 L

Ext. (mm)	600 x 400 x 264
Int. (mm)	520 x 353 x 240
Weight (Kg)	3.0
Load capacity (Kg)	25
Static load (Kg)	142
Nesting ratio	59%



8583004 50 L

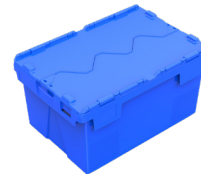
Ext. (mm)	600 x 400 x 308
Int. (mm)	514 x 346 x 282
Weight (Kg)	2.9
Load capacity (Kg)	25
Static load (Kg)	142
Nesting ratio	65%



8583002U 50 L (Special UN version)

Ext. (mm)	600 x 400 x 308
Int. (mm)	514 x 346 x 282
Weight (Kg)	2.9
Load capacity (Kg)	25
Static load (Kg)	142
Nesting ratio	65%

UN Certified: 4H2/X30/S*/B/2095-190269



9958027 50 L

Ext. (mm)	600 x 400 x 308
Int. (mm)	529 x 351 x 272
Weight (Kg)	3.4
Load capacity (Kg)	20
Static load (Kg)	270
Nesting ratio	65%

All of IPL Schoeller™'s products are available in a standard range of colours, other colours are possible upon request. RAL, PMS and Pantone colours are references for the closest comparator.

White RAL 9016 Pantone 705	Black RAL 9005 Pantone Black	Grey 502 RAL 7040 Pantone 423	Grey 522 RAL 7012 Pantone 445	Green 415 RAL 6011 Pantone 626	Green 481 RAL 6005 Pantone 3308	Blue 646 Pantone 2728C	Blue 626 RAL 5012 Pantone 307
Blue 661 RAL 5003 Pantone 540	Blue 662 RAL 5005 Pantone 294	Red 246 RAL 3020 Pantone 485	Orange 311 RAL 2004 Pantone 1655	Yellow Pastel 316 RAL 1034 Pantone 715	Yellow 355 RAL 1018 Pantone 123	Beige 319 RAL 1015 Pantone 726	Brown 801 RAL 3009 Pantone 181

Technical data



8584004 64 L

Ext. (mm)	600 x 400 x 367
Int. (mm)	507 x 342 x 340
Weight (Kg)	3.3
Load capacity (Kg)	25
Static load (Kg)	142
Nesting ratio	71%



9112004 65 L

Ext. (mm)	600 x 400 x 365
Int. (mm)	508 x 346 x 340
Weight (Kg)	3.7
Load capacity (Kg)	25
Static load (Kg)	142
Nesting ratio	70%



9114004 70 L

Ext. (mm)	600 x 400 x 400
Int. (mm)	504 x 343 x 375
Weight (Kg)	3.7
Load capacity (Kg)	25
Static load (Kg)	142
Nesting ratio	73%



91140L4 70 L (Special UN version)

Ext. (mm)	600 x 400 x 400
Int. (mm)	514 x 343 x 375
Weight (Kg)	3.8
Load capacity (Kg)	30
Static load (Kg)	195
Nesting ratio	73%

UN Certified: 4H2V/X28/S/--*/F/BVT1091122/



91140U4 70 L (Special UN version)

Ext. (mm)	600 x 400 x 400
Int. (mm)	504 x 343 x 375
Weight (Kg)	3.8
Load capacity (Kg)	30
Static load (Kg)	195
Nesting ratio	65%

UN Certified: 4H2/Y30/S/*/*B/2095-190269

Accessories



A199.580.008 Security seal

Tamper-evident security seal for Kaiman®



9192.004 Universal dolly

Ext. (mm)	798 x 587 x 185
Max. load (Kg)	500

800 x 600mm dolly with 2 fixed, 2 swivel castors, 10 load retaining pop-ups and flip-out extension for carrying nested 600x400mm Kaiman.

All of IPL Schoeller™'s products are available in a standard range of colours, other colours are possible upon request. RAL, PMS and Pantone colours are references for the closest comparator.

White RAL 9016 Pantone 705	Black RAL 9005 Pantone Black	Grey 502 RAL 7040 Pantone 423	Grey 522 RAL 7012 Pantone 445	Green 415 RAL 6011 Pantone 626	Green 481 RAL 6005 Pantone 3308	Blue 646 Pantone 2728C	Blue 626 RAL 5012 Pantone 307
Blue 661 RAL 5003 Pantone 540	Blue 662 RAL 5005 Pantone 294	Red 246 RAL 3020 Pantone 485	Orange 311 RAL 2004 Pantone 1655	Yellow Pastel 316 RAL 1034 Pantone 715	Yellow 355 RAL 1018 Pantone 123	Beige 319 RAL 1015 Pantone 726	Brown 801 RAL 3009 Pantone 181



IPL
Schoeller™

Smart designs for a Circular Economy

IPL Schoeller is a global leader in sustainable packaging. We design smart circular solutions that support efficient and smart supply chains. With 26 production facilities across North America, the United Kingdom and Europe, we deliver reliable, scalable and sustainable solutions for customers across multiple industries. Our purpose is to create solutions that never become waste.

Let's connect! Contact us

www.iplschoeller.com
info@iplschoeller.com



This presentation and the information contained within (including without limitation any designs, drawings, trademarks, innovations, concepts or other intellectual property) are confidential and proprietary to IPL Schoeller and/or its affiliates and protected by copyright, trademark, patent, trade secret, and other applicable laws. No rights, title, or interest and no licence or other permission are transferred. All intellectual property remains the property of IPL Schoeller and its relevant affiliates. This presentation is provided solely for information and evaluation purposes only and its contents may not be used, disclosed, reproduced, copied, published, forwarded, reverse-engineered, decompiled or distributed, in whole or in part, to any third party without the prior express written consent of IPL Schoeller. The recipient of any copy of this presentation shall limit internal access to those individuals with a genuine need to know and shall ensure that such individuals are made aware of and comply with the obligations set out in this notice. Upon request, this presentation and all copies must be returned or permanently destroyed. This presentation does not constitute an offer, undertaking, representation or warranty, and no reliance should be placed on its contents unless and until formally agreed in writing. No representation or warranty, express or implied, is or will be given by IPL Schoeller, any of its affiliates or any of its or its affiliates' respective members, directors, officers, employees, associates, agents, investors or advisers or any other person as to the accuracy or completeness of the information included in this Presentation. IPL Schoeller is under no obligation to update, revise, or correct any of the information contained herein. Nothing in this presentation is intended to create legal relations or to impose any legal obligation on IPL Schoeller, any of its affiliates or any of its or its affiliates' respective members, directors, officers, employees, associates, agents, investors or advisers. To the fullest extent permitted by applicable law, neither IPL Schoeller nor any of its affiliates, nor any of their respective directors, officers, employees, or advisers, shall have any liability (whether in contract, tort, negligence, or otherwise) for any loss or damage whatsoever arising directly or indirectly from the use of, or reliance on, this Presentation or any information contained herein. This notice and any disputes arising out of or in connection with it shall be governed by and construed in accordance with the laws of [Ireland], and the parties submit to the exclusive jurisdiction of the courts of [Ireland]. This document is presented by IPL Schoeller.