

Euroclick® : Technical data

400x300



8300.000 - 10 L	
Ext. (mm)	397 x 297 x 120
Int. (mm)	358 x 258 x 107.5
Stacked height (mm)	110
Unit load (Kg)	15
Static load (Kg)	400



8301.000 - 12 L	
Ext. (mm)	397 x 297 x 145
Int. (mm)	358 x 258 x 129
Stacked height (mm)	135
Unit load (Kg)	15
Static load (Kg)	400



8302.000 - 15 L	
Ext. (mm)	397 x 297 x 175
Int. (mm)	358 x 258 x 162
Stacked height (mm)	165
Unit load (Kg)	15
Static load (Kg)	400



8303.000 - 19 L	
Ext. (mm)	397 x 297 x 220
Int. (mm)	358 x 258 x 207
Stacked height (mm)	210
Unit load (Kg)	15
Static load (Kg)	350



8304.000 - 20 L	
Ext. (mm)	397 x 297 x 235
Int. (mm)	358 x 258 x 217
Stacked height (mm)	222
Unit load (Kg)	15
Static load (Kg)	350



8305.000 - 24 L	
Ext. (mm)	397 x 297 x 270
Int. (mm)	358 x 258 x 254.5
Stacked height (mm)	257
Unit load (Kg)	15
Static load (Kg)	300



8306.000 - 29 L	
Ext. (mm)	397 x 297 x 320
Int. (mm)	358 x 258 x 304.5
Stacked height (mm)	307
Unit load (Kg)	15
Static load (Kg)	300



8313.000 - Click Booster 400x300	
Dimension change	+15mm height



8315.000 - ClickHolder	
Suitable for:	Short and long side

600x400



8307.000 - 21 L	
Ext. (mm)	597 x 397 x 120
Int. (mm)	557 x 357 x 106
Stacked height (mm)	110
Unit load (Kg)	15
Static load (Kg)	450



8308.000 - 38 L	
Ext. (mm)	597 x 397 x 175
Int. (mm)	557 x 357 x 161
Stacked height (mm)	165
Unit load (Kg)	15
Static load (Kg)	450



8309.000 - 41 L	
Ext. (mm)	597 x 397 x 220
Int. (mm)	557 x 357 x 204
Stacked height (mm)	208
Unit load (Kg)	15
Static load (Kg)	400

Version with Ribbed Base & FM Global Venting holes:
2191.100 - Euroclick with ribbed base 600x400x220



8310.000 - 44 L	
Ext. (mm)	597 x 397 x 235
Int. (mm)	557 x 357 x 219
Stacked height (mm)	222.5
Unit load (Kg)	15
Static load (Kg)	350



8311.000 - 51 L	
Ext. (mm)	597 x 397 x 270
Int. (mm)	557 x 357 x 258
Stacked height (mm)	258
Unit load (Kg)	15
Static load (Kg)	350



8312.000 - 64 L	
Ext. (mm)	597 x 397 x 320
Int. (mm)	557 x 357 x 304
Stacked height (mm)	308
Unit load (Kg)	15
Static load (Kg)	350

Version with Ribbed Base & FM Global Venting holes:
1191.100 - EuroClick with ribbed base 600x400x320



8314.000 - Click Booster 600x400	
Dimension change	+15mm height



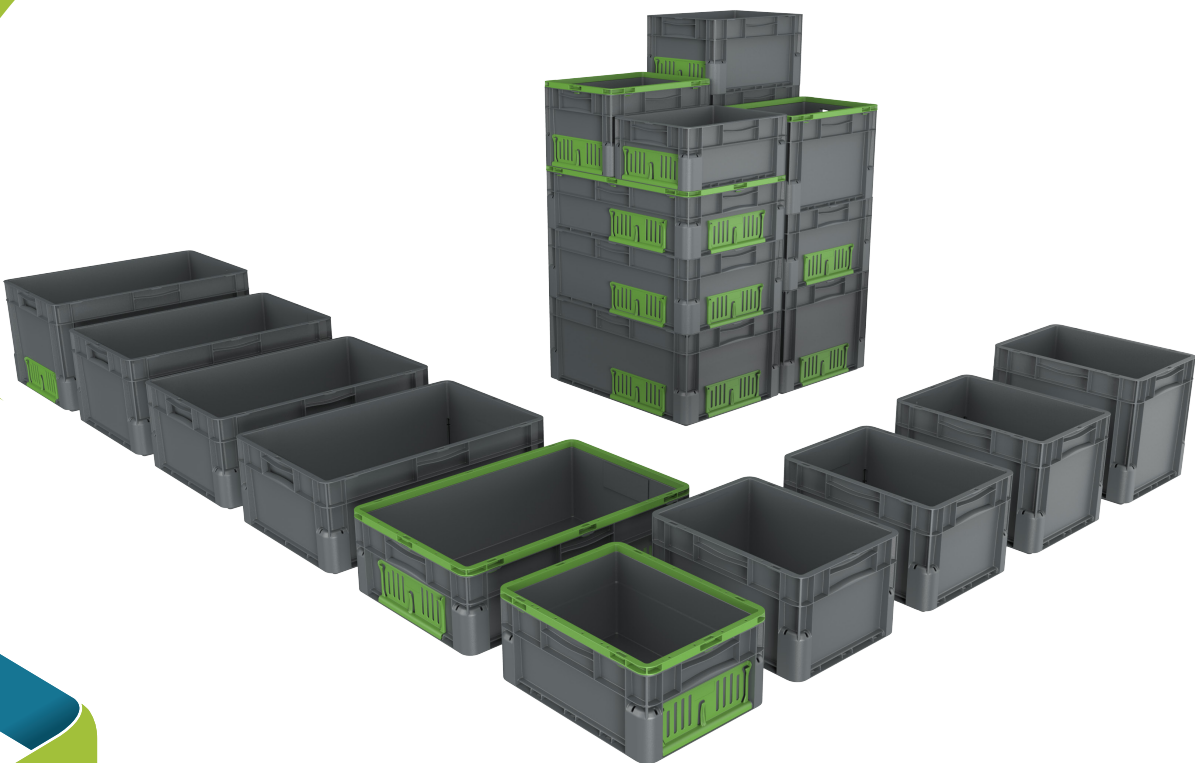
8315.000 - ClickHolder	
Suitable for:	Short and long side



Please visit our website
www.schoellerallibert.com

EFFICIENT BY DESIGN
CIRCULAR BY NATURE

Schoeller Allibert



Schoeller Allibert
efficient by design ∞ circular by nature

In line with its policy of continuous development, Schoeller Allibert reserves the right to amend product specifications described in this catalogue without prior notice. Most of our products are protected by patent, registered design or copyright. Texts, characteristics, pictures and plans are not contractual. Creation 01/2024.

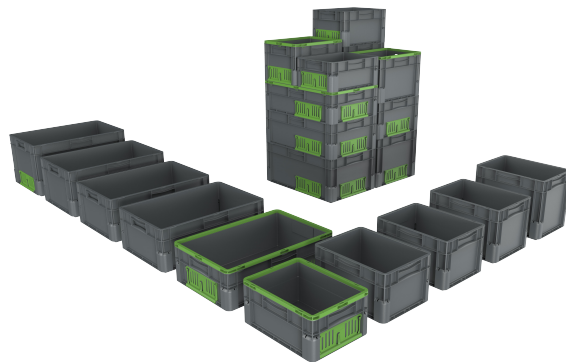
Euroclick® : One crate, endless possibilities

Lightweight yet Robust Design

The Euroclick® boasts an impressively lightweight structure without sacrificing durability, ensuring effortless handling and long-term resilience in demanding industrial environments.

Diverse Product Range

Available in 400x300 and 600x400 footprints with varying heights, Euroclick® is designed to accommodate a wide array of industry applications.



Conveyor protection

Featuring a double-base rim and rounded corners, Euroclick® is engineered for seamless integration with conveyor systems, ensuring fluid movement and increased process stability.

Optimized Storage Capacity

The strategic wall design of Euroclick® maximizes internal volume, enabling more efficient use of space without compromising on storage capability.

Ergonomic Handling

With hand grips that can be closed or open, Euroclick® provides not only ease of handling but also ergonomic benefits, reducing the strain on operators during transport.

ESD Version Available

For sensitive electronic components, our Electrostatic Discharge (ESD) material option safeguards against static interference, ensuring protection during storage and transport.



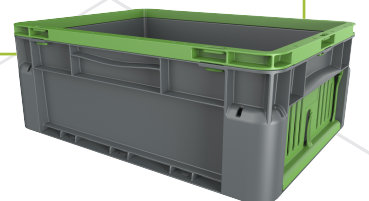
Ease of Maintenance

The smooth interior and exterior of Euroclick® facilitate effortless cleaning.

Customization Options

Upgrade your storage solutions with Euroclick® and its range of options:

- Click Booster, engineered to add 15mm to your container's height with each Booster.
- ClickHolder, offering an easy way for quick content identification.
- Enhance your brand's presence by customizing with your company colors and logo, seamlessly integrating functionality and style.



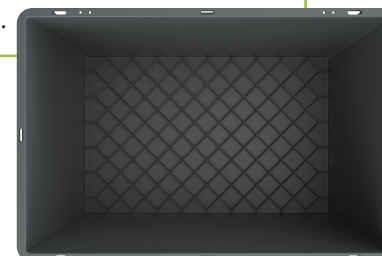
Drainage holes

Customize with optional drain holes, allowing quick evacuation of liquids and ensuring adherence to stringent safety and regulatory standards.



Automation Friendly Version

Our Euroclick® model with a ribbed base, significantly minimize base deflection to under 5mm. This ensures unmatched stability and efficiency, making them an ideal choice for automated warehouse systems. Additionally, these bins feature venting holes that comply with FM Global regulations, enhancing fire safety and meeting industry standards.



Euroclick®

Freedom of customization

400x300 and 600x400 footprints
available in different heights and variants.