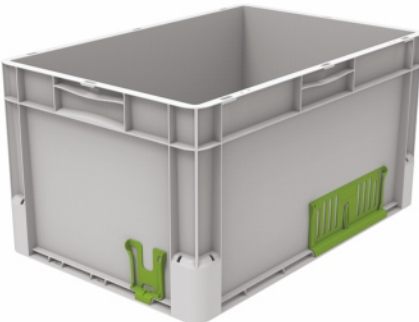


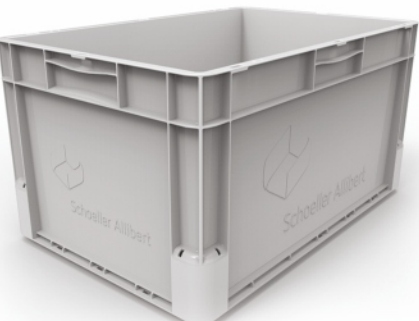
# The freedom of customisation



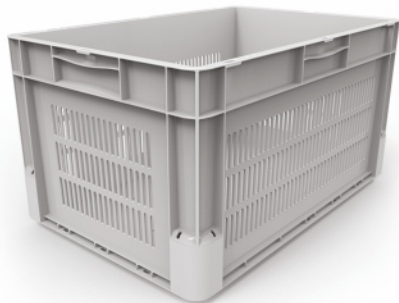
Colour of crate



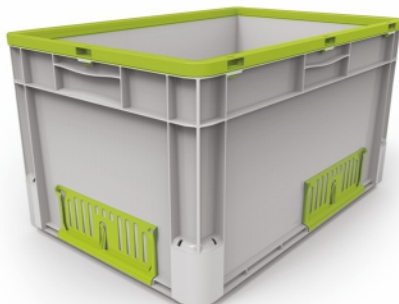
Customised Click Holder size



Engraving



Ventilated sides



Colour of Click Holder and Click Booster



Open or closed handgrips



Printing



Pin-dot area and engraving

# The evolution of EuroClick

## 400x300



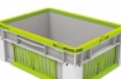
397x297x120



397x297x135  
with Click Booster



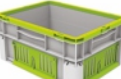
397x297x145



397x297x160  
with Click Booster



397x297x175



397x297x190  
with Click Booster



397x297x220



397x297x235



397x297x250  
with Click Booster



397x297x270



397x297x285  
with Click Booster



397x297x320

## 600 x 400



597x397x120



597x397x135  
with Click Booster



597x397x175



597x397x190  
with Click Booster



597x397x220



597x397x235



597x397x250  
with Click Booster



597x397x270



597x397x285  
with Click Booster



597x397x320

Max. Load: 15kg

EuroClick®  
The better way



Schoeller Allibert  
Innovating your logistics for a better world



## COMPATIBILITY

Mix previous generations with the new crates - the EuroClick® will get along with them just great! No problems with compatibility while gradually updating your containers fleet.



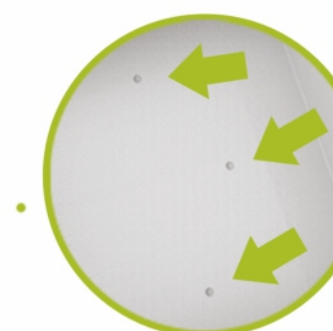
### 01 Click Booster®

Easily increase the height of the crates and **extend your range** with the Click Booster®.



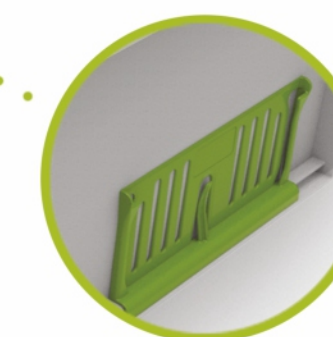
### 02 Drain Holes

Choose the option to meet the requirements of your **fire service** system.



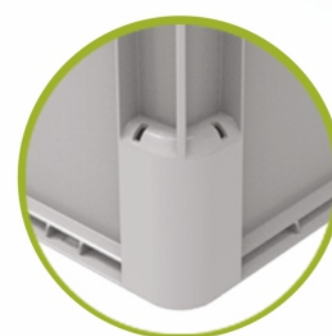
### 03 Click-on Click Holder®

No more lost labels - the holder is purpose-designed **to hold labels in place** to guarantee 100% readability. Can be placed in two locations and its size can be modified.



### 04 Double-base rim

This additional support **limits base deflection** and allows **smoother movement** on rollers. We also introduced a sloped edge to **reduce water retention**.



### 05 Rounded corners

Provide **extra strength** and **smoother direction changes** on conveyors.



### 07 Customisation

Enjoy the **freedom of customisation** with choice of colours, ventilated sides, pin-dot areas, engraving and printing.



### 08 Light

Now the same high quality comes with less weight, helping you to **cut costs**.

