



IPL
Schoeller™

Maxinest range

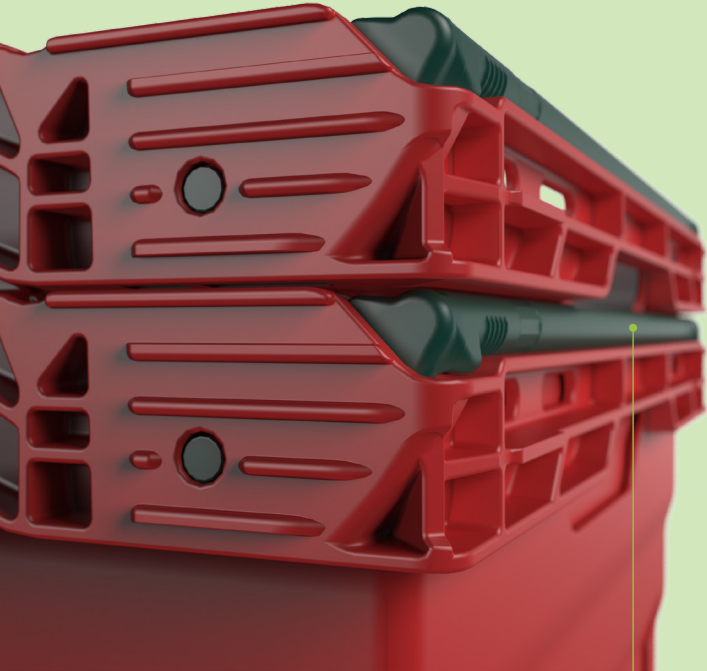


HANDHELD STACK NEST CONTAINER

Maximize efficiency, minimize costs

Maxinest Containers

The high-efficiency, space-saving crate for sustainable retail logistics built to optimize retail and grocery supply chains. »



Maxine Containers

Retail supply chains demand efficiency. Maxine delivers.

Built for retail and grocery transport, Maxine revolutionises your supply chain with industry-leading nesting ratios and flexible height options. Replace wasteful single-use packaging and maximise both warehouse and vehicle space with one smart solution.



Space maximiser

Maxine nests by up to 76%, helping optimise vehicle fill and delivering significant space savings on return trips due to its efficient nesting capabilities.

Award-winning performance

Recognised across the retail sector for exceptional durability and supply chain results.



Effortless relabeling

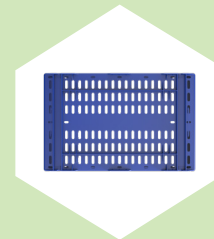
Textured exterior surfaces ensure labels remove cleanly, making reuse faster and more efficient.

Adjustable Capacity for Select Models

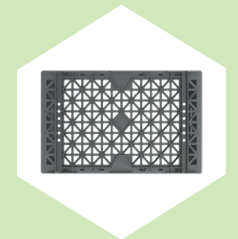
Some crate models offer dual or multi-height stacking bars, allowing you to instantly adjust internal capacity. Ideal for accommodating different product types—without the need for excess inventory.

Automation-ready design

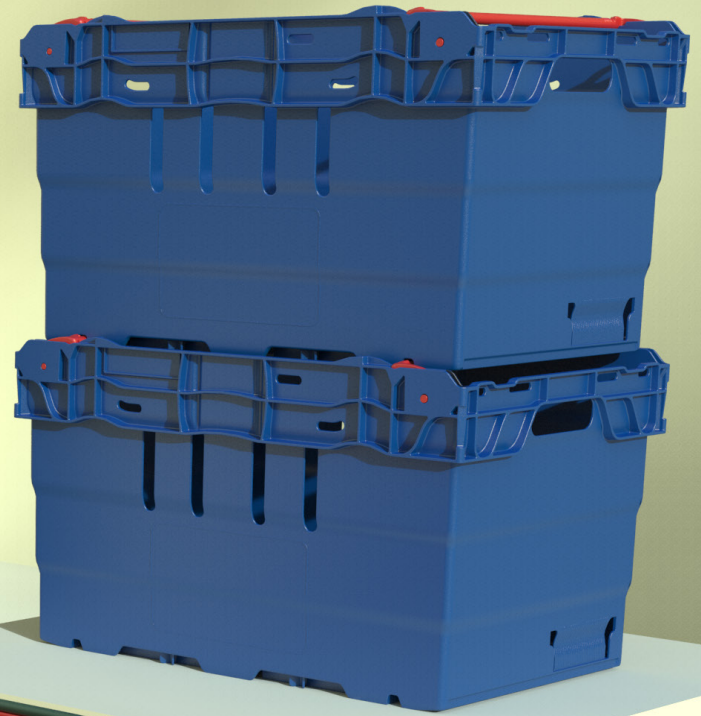
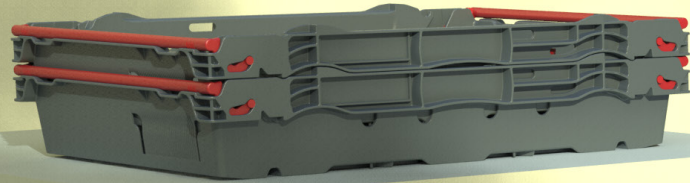
The Maxinest Plus series features a specialised conveyor base designed to integrate seamlessly with automated handling systems—making it a future-proof choice for advanced logistics.



Standard base



Plus base



Technical data



9960001 - 7.7 L

Ext. (mm)	401 x 301.5 x 107.5
Int. (mm)	364 x 257.5 x 79.5
Incremental nest height (mm)	45
Nesting ratio	58%
Weight (Kg)	0.7
Individual load (Kg)	5.5
Static load (Kg)	200
Dynamic load (Kg)	134



9633002 - 10 L

Ext. (mm)	401 x 302 x 135
Int. (mm)	364 x 261 x 100
Incremental nest height (mm)	54
Nesting ratio	60%
Weight (Kg)	0.8
Individual load (Kg)	7.5
Static load (Kg)	90
Dynamic load (Kg)	90



9787002 - 11.6 L

Ext. (mm)	401 x 301.7 x 148
Int. (mm)	361 x 257 x 120
Incremental nest height (mm)	45
Nesting ratio	70%
Weight (Kg)	0.8
Individual load (Kg)	8
Static load (Kg)	200
Dynamic load (Kg)	134



9636002 - 15 L

Ext. (mm)	401 x 302 x 180
Int. (mm)	364 x 264 x 143
Incremental nest height (mm)	54
Nesting ratio	70%
Weight (Kg)	0.9
Individual load (Kg)	10
Static load (Kg)	98
Dynamic load (Kg)	98



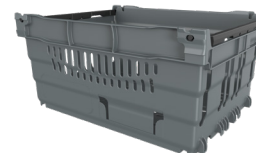
9635002 - 16 L

Ext. (mm)	600 x 400 x 106
Int. (mm)	552 x 352 x 80
Incremental nest height (mm)	40
Nesting ratio	62%
Weight (Kg)	1.2
Individual load (Kg)	7
Static load (Kg)	158
Dynamic load (Kg)	158



9962002 - 16 L

Ext. (mm)	600 x 400 x 106
Int. (mm)	550 x 351 x 80
Incremental nest height (mm)	40
Nesting ratio	62%
Weight (Kg)	1.2
Individual load (Kg)	7
Static load (Kg)	177
Dynamic load (Kg)	177



9746102 - 16.5 L

Ext. (mm)	401 x 301.7 x 193
Int. (mm)	362 x 258 x 165
Incremental nest height (mm)	45
Nesting ratio	77%
Weight (Kg)	0.8
Individual load (Kg)	11
Static load (Kg)	200
Dynamic load (Kg)	133



9170002 - 28 L

Ext. (mm)	603.5 x 406 x 167
Int. (mm)	546.5 x 345 x 140
Incremental nest height (mm)	40
Nesting ratio	76%
Weight (Kg)	1.5
Individual load (Kg)	12
Static load (Kg)	162
Dynamic load (Kg)	162

Technical data



9766002 - 28 L

Ext. (mm)	603.5 x 406 x 167
Int. (mm)	546.5 x 345 x 140
Incremental nest height (mm)	40
Nesting ratio	76%
Weight (Kg)	1.5
Individual load (Kg)	12
Static load (Kg)	162
Dynamic load (Kg)	162



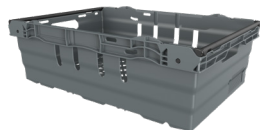
9963002 - 28 L

Ext. (mm)	600 x 400.5 x 167
Int. (mm)	545.8 x 348.4 x 140.7
Incremental nest height (mm)	40
Nesting ratio	76%
Weight (Kg)	1.5
Individual load (Kg)	12
Static load (Kg)	181
Dynamic load (Kg)	181



9910002 - 32 L

Ext. (mm)	600 x 400.5 x 185
Int. (mm)	546.5 x 348 x 158
Incremental nest height (mm)	43
Nesting ratio	77%
Weight (Kg)	1.6
Individual load (Kg)	18
Static load (Kg)	182
Dynamic load (Kg)	182



9767002 - 34.5 L

Ext. (mm)	600 x 400 x 194
Int. (mm)	548.5 x 347.8 x 167
Incremental nest height (mm)	46
Nesting ratio	76%
Weight (Kg)	1.6
Individual load (Kg)	20
Static load (Kg)	375
Dynamic load (Kg)	243



8239000 - 35 L

Ext. (mm)	599 x 403.5 x 199
Int. (mm)	547 x 347.2 x 172.5
Incremental nest height (mm)	46
Nesting ratio	81%
Weight (Kg)	1.4
Individual load (Kg)	18
Static load (Kg)	162
Dynamic load (Kg)	162



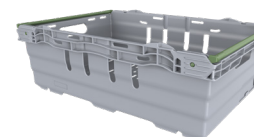
9637002 - 35 L

Ext. (mm)	603.5 x 405.5 x 199
Int. (mm)	548.5 x 347.8 x 172
Incremental nest height (mm)	46
Nesting ratio	77%
Weight (Kg)	1.6
Individual load (Kg)	18
Static load (Kg)	320
Dynamic load (Kg)	162



9637007 - 35 L

Ext. (mm)	603.5 x 405.5 x 199
Int. (mm)	548.5 x 347.8 x 172
Incremental nest height (mm)	61
Nesting ratio	70%
Weight (Kg)	1.8
Individual load (Kg)	18
Static load (Kg)	320
Dynamic load (Kg)	162



9637E02 - 35 L

Ext. (mm)	603.5 x 405.5 x 199
Int. (mm)	548.5 x 347.8 x 172
Incremental nest height (mm)	46
Nesting ratio	77%
Weight (Kg)	1.6
Individual load (Kg)	18
Static load (Kg)	320
Dynamic load (Kg)	162

Technical data



9632002 - 44 L

Ext. (mm)	603.5 x 406 x 253
Int. (mm)	547 x 348 x 226
Incremental nest height (mm)	64
Nesting ratio	75%
Weight (Kg)	2.0
Individual load (Kg)	21
Static load (Kg)	320
Dynamic load (Kg)	162



8566002 - 45 L

Ext. (mm)	600 x 400 x 253
Int. (mm)	545 x 345 x 222
Incremental nest height (mm)	64.5
Nesting ratio	75%
Weight (Kg)	1.7
Individual load (Kg)	15
Static load (Kg)	100
Dynamic load (Kg)	100



9631002 - 46 L

Ext. (mm)	603.5 x 406 x 267
Int. (mm)	548 x 348 x 240
Incremental nest height (mm)	68
Nesting ratio	75%
Weight (Kg)	2.0
Individual load (Kg)	22
Static load (Kg)	162
Dynamic load (Kg)	162



8537007 - 50 L

Ext. (mm)	600 x 400 x 279
Int. (mm)	527.5 x 340.1 x 256.5
Incremental nest height (mm)	56
Nesting ratio	80%
Weight (Kg)	2.3
Individual load (Kg)	18
Static load (Kg)	165
Dynamic load (Kg)	165



9788002 - 67 L

Ext. (mm)	600 x 400 x 360
Int. (mm)	541 x 345.3 x 328
Incremental nest height (mm)	91
Nesting ratio	75%
Weight (Kg)	2.8
Individual load (Kg)	35
Static load (Kg)	193
Dynamic load (Kg)	193

Accessories

9192004 - Universal dolly
798x598x171mm



All of IPL Schoeller™'s products are available in a standard range of colours, other colours are possible upon request. RAL, PMS and Pantone colours are references for the closest comparator.

White RAL 9016 Pantone 705	Black RAL 9005 Pantone Black	Grey 502 RAL 7040 Pantone 423	Grey 522 RAL 7012 Pantone 445	Green 415 RAL 6011 Pantone 626	Green 481 RAL 6005 Pantone 3308	Blue 646 Pantone 2728C	Blue 626 RAL 5012 Pantone 307
Blue 661 RAL 5003 Pantone 540	Blue 662 RAL 5005 Pantone 294	Red 246 RAL 3020 Pantone 485	Orange 311 RAL 2004 Pantone 1655	Yellow Pastel 316 RAL 1034 Pantone 715	Yellow 355 RAL 1018 Pantone 123	Beige 319 RAL 1015 Pantone 726	Brown 801 RAL 3009 Pantone 181



Smart designs for a Circular Economy

IPL Schoeller is a global leader in sustainable packaging. We design smart circular solutions that support efficient and smart supply chains. With 26 production facilities across North America, the United Kingdom and Europe, we deliver reliable, scalable and sustainable solutions for customers across multiple industries. Our purpose is to create solutions that never become waste.

Let's connect! Contact us

www.iplschoeller.com
info@iplschoeller.com



This presentation and the information contained within (including without limitation any designs, drawings, trademarks, innovations, concepts or other intellectual property) are confidential and proprietary to IPL Schoeller and/or its affiliates and protected by copyright, trademark, patent, trade secret, and other applicable laws. No rights, title, or interest and no licence or other permission are transferred. All intellectual property remains the property of IPL Schoeller and its relevant affiliates. This presentation is provided solely for information and evaluation purposes only and its contents may not be used, disclosed, reproduced, copied, published, forwarded, reverse-engineered, decompiled or distributed, in whole or in part, to any third party without the prior express written consent of IPL Schoeller. The recipient of any copy of this presentation shall limit internal access to those individuals with a genuine need to know and shall ensure that such individuals are made aware of and comply with the obligations set out in this notice. Upon request, this presentation and all copies must be returned or permanently destroyed. This presentation does not constitute an offer, undertaking, representation or warranty, and no reliance should be placed on its contents unless and until formally agreed in writing. No representation or warranty, express or implied, is or will be given by IPL Schoeller, any of its affiliates or any of its or its affiliates' respective members, directors, officers, employees, associates, agents, investors or advisers or any other person as to the accuracy or completeness of the information included in this Presentation. IPL Schoeller is under no obligation to update, revise, or correct any of the information contained herein. Nothing in this presentation is intended to create legal relations or to impose any legal obligation on IPL Schoeller, any of its affiliates or any of its or its affiliates' respective members, directors, officers, employees, associates, agents, investors or advisers. To the fullest extent permitted by applicable law, neither IPL Schoeller nor any of its affiliates, nor any of their respective directors, officers, employees, or advisers, shall have any liability (whether in contract, tort, negligence, or otherwise) for any loss or damage whatsoever arising directly or indirectly from the use of, or reliance on, this Presentation or any information contained herein. This notice and any disputes arising out of or in connection with it shall be governed by and construed in accordance with the laws of [Ireland], and the parties submit to the exclusive jurisdiction of the courts of [Ireland]. This document is presented by IPL Schoeller.