

North Park Apartment Village

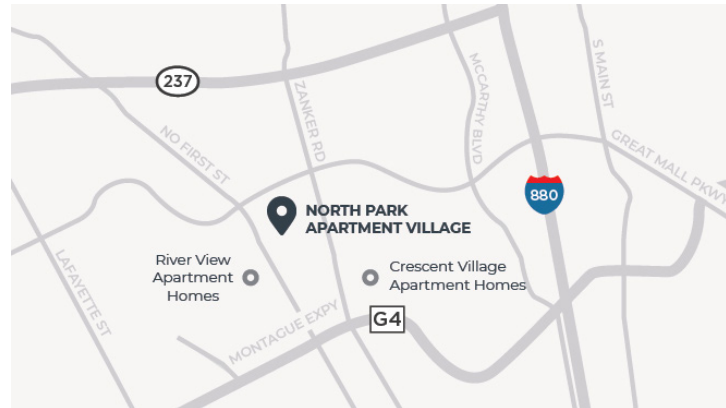
39 RIO ROBLES E. | SAN JOSE, CA 95134



4,942 SF GROSS LEASABLE AREA

Apartment Units: 2,762

- North Park Apartment Village is a mixed-use Amenity Center designed to provide a convenient environment that seamlessly integrates the demands of work, life, and play.
- Easy access from the San Tomas/Montague Expressway.
- Located within North San Jose Innovation Triangle; home to the world's most recognized companies including Broadcom, Cisco, and Intel.
- North Park is a residential community of 2,750+ luxury apartment homes within one mile of additional Irvine Company apartment developments: Crescent Village and River View.
- All residential communities combined offer 6,250+ luxury apartment homes in the immediate trade area providing an ample customer base with access for direct marketing.
- Walking distance to the River Oaks Light Rail VTA Station at River Oaks Parkway and North First Street.



KEY TENANTS

Qargo Coffee

The Market at North Park

TOTAL TRADE AREA DEMOGRAPHICS

106K

Annual Visits₁

34

Average Age₂

\$215K

Avg Household Income₂

94%

Higher Spend on Food₂
Vs. the National Average

76%

Higher Spend on Retail Goods₂
Vs. the National Average

APARTMENT RESIDENT PROFILE

31

Median Age₃

\$204K

Median Household Income₃

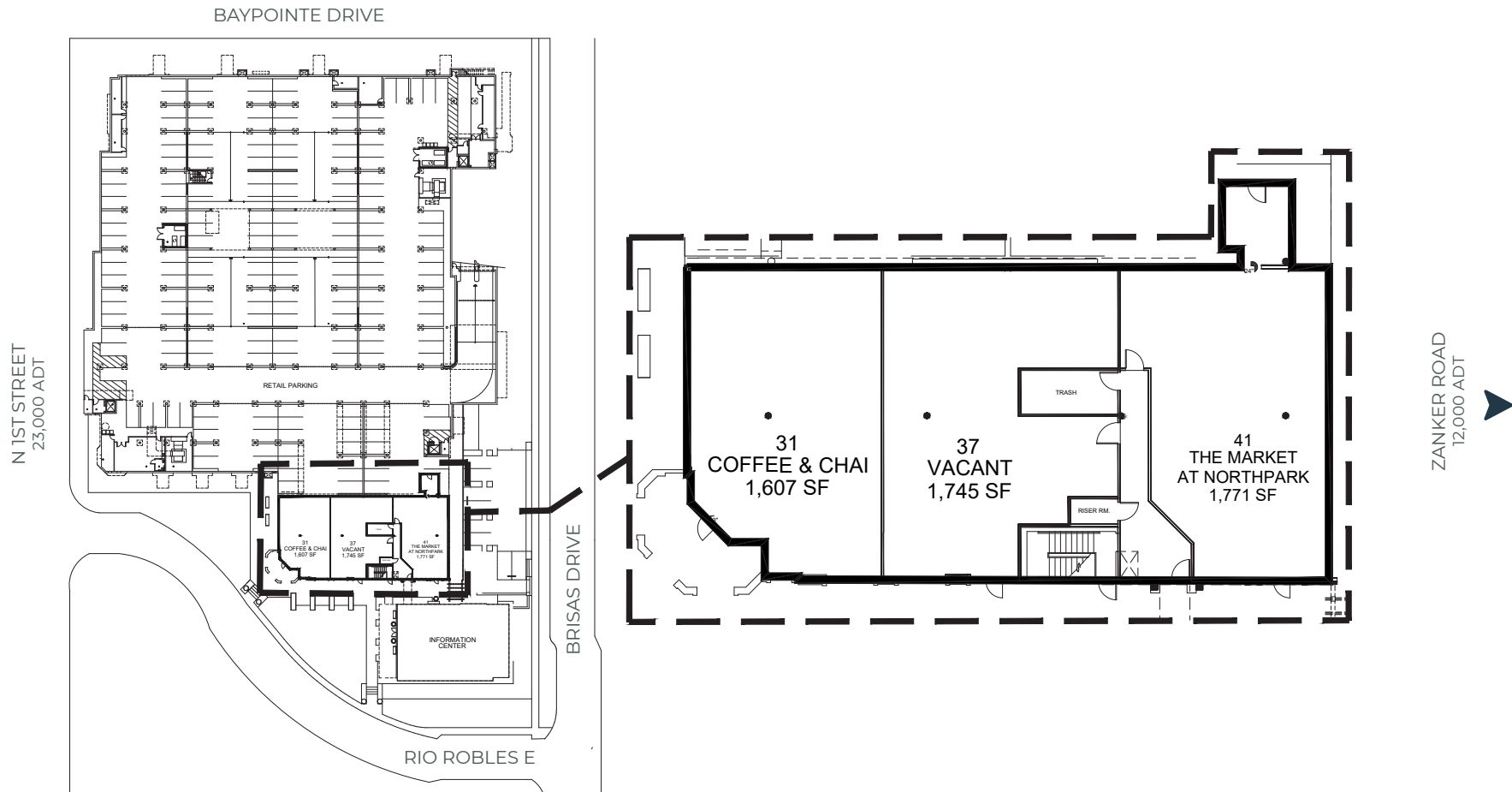
Total = 70% of visits

Sources: (1) Placer.ai, (2) Esri 2024, (3) Onesite

North Park Apartment Village



39 RIO ROBLES E. | SAN JOSE, CA 95134



FOR MORE INFORMATION, VISIT [IRVINECOMPANYRETAIL.COM](https://www.irvinecompanyretail.com)

© 2025 Irvine Management Company. All Rights Reserved. Sources: 2024 Esri; Placer.ai; Onsite; 2024 Kalibrate Technologies. The information contained herein has been obtained from sources we deem reliable. While we have no reason to doubt its accuracy, we do not guarantee it. This is a schematic plan intended only to show the general layout of the Shopping Center and the approximate location of the Premises. Landlord, at any time, may change the shape, size, location, number and extent of the improvements shown herein, as well as any additional improvements. Landlord may eliminate, add or relocate any improvements to any portion of the Shopping Center, including, without limitation, buildings, parking areas or structures, roadways, curb cuts, temporary or permanent kiosks, displays or stands, and may add land to and/or withdraw land from the Shopping Center. Plan not to scale. Irvine Company and the Sunwave logo are registered trademarks of Irvine Management Company. All other trademarks are the property of their respective owners. All properties are offered for lease through Irvine Management Company, a licensed real estate broker DRE LIC. #02041810.