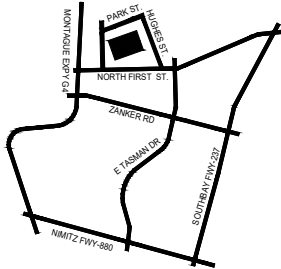
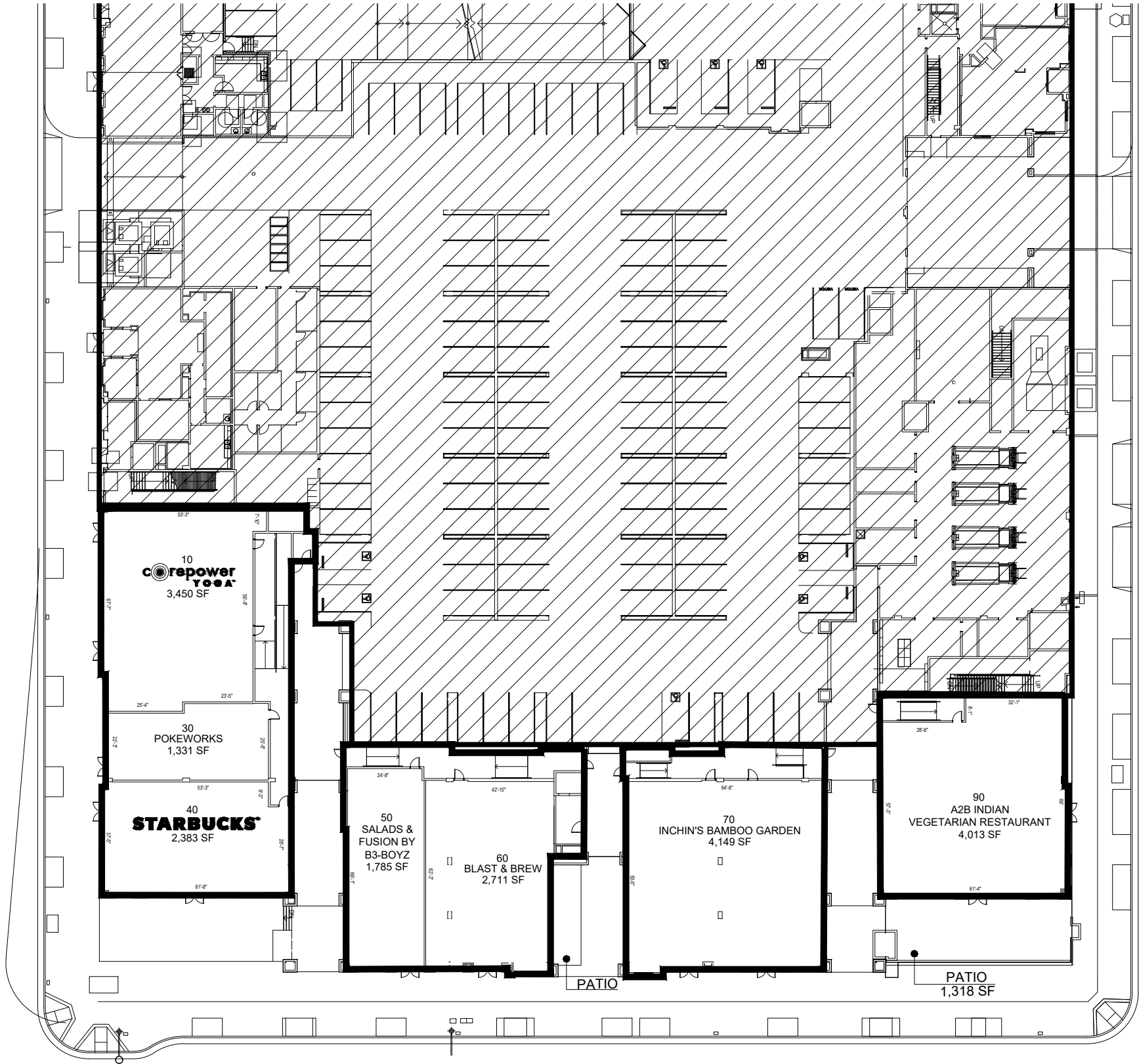


RIVER OAKS PLACE

HUGHES STREET

1ST STREET

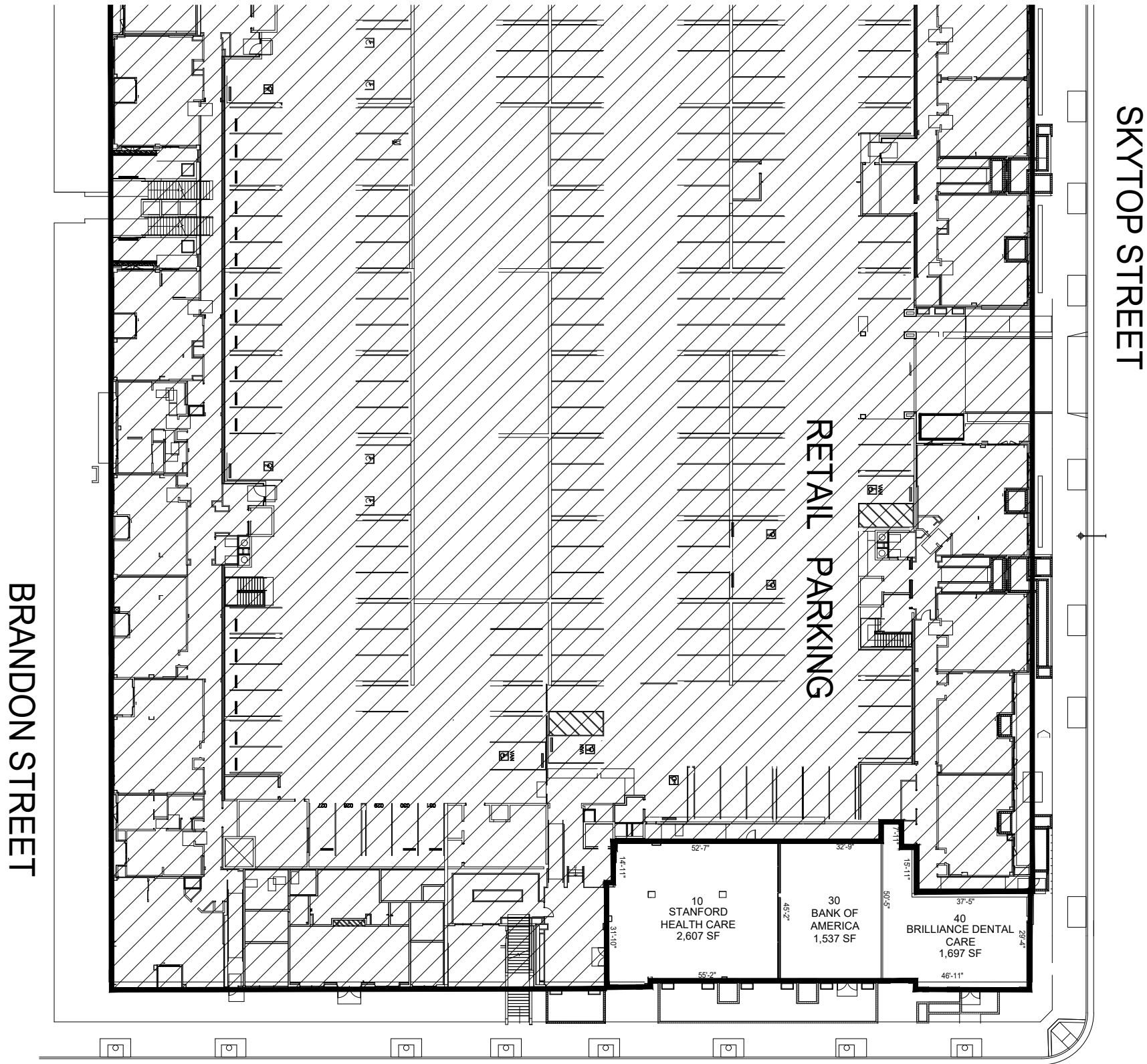
PARCEL 1



Map not to scale
San Jose, CA

RIVER VIEW
APARTMENT HOMES

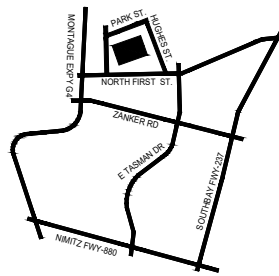
April 2025



BRANDON STREET

SKYTOP STREET

PARCEL 3



Map not to scale
San Jose, CA

RIVER VIEW
APARTMENT HOMES

April 2025

© 2018 The Irvine Company LLC. All Rights Reserved. All properties are offered for lease by Irvine Management Company. Sources: Nielsen Claritas 2018, OCTA 2017 Traffic Flow Map, Caltrans 2015, Sunnyvale Transportation and Traffic 2011. These are schematic plans intended only to show the general layout of the Shopping Center and the approximate location of the Premises. Fashion Island®, Irvine Spectrum®, Irvine Spectrum Center®, Irvine Towers®, Los Olivos®, Newport Center®, Newport Center®, Newport Ridge®, Oak Creek®, Oak Creek Golf Club®, Orchard Hills®, Pacific Ridge®, Portola Springs®, Quail Hill®, The Irvine Ranch®, The Square®, Turtle Ridge®, University Research Park®, and Westpark™ are registered trademarks of Irvine Management Company. Pelican Hill®, Pelican Hill Golf Club™ and The Resort at Pelican Hill® are trademarks of The Irvine Company LLC. Landlord, at any time, may change the shape, size, location, number and extent of the improvement shown hereon, as well as any additional improvements to any portion of the Shopping Center, including, without limitation, buildings, parking areas or structures, roadways, curb cuts, temporary or permanent kiosks, displays or stands, and may add land to and/or withdraw land from the Shopping Center. PLAN NOT TO SCALE.