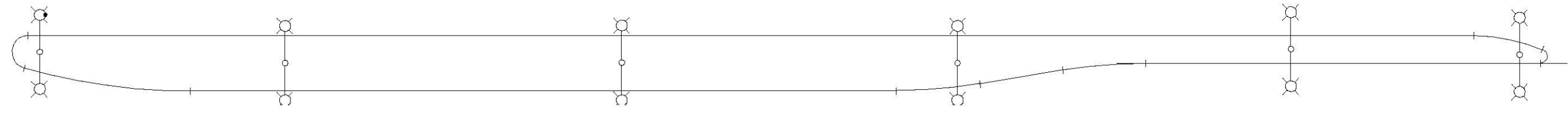
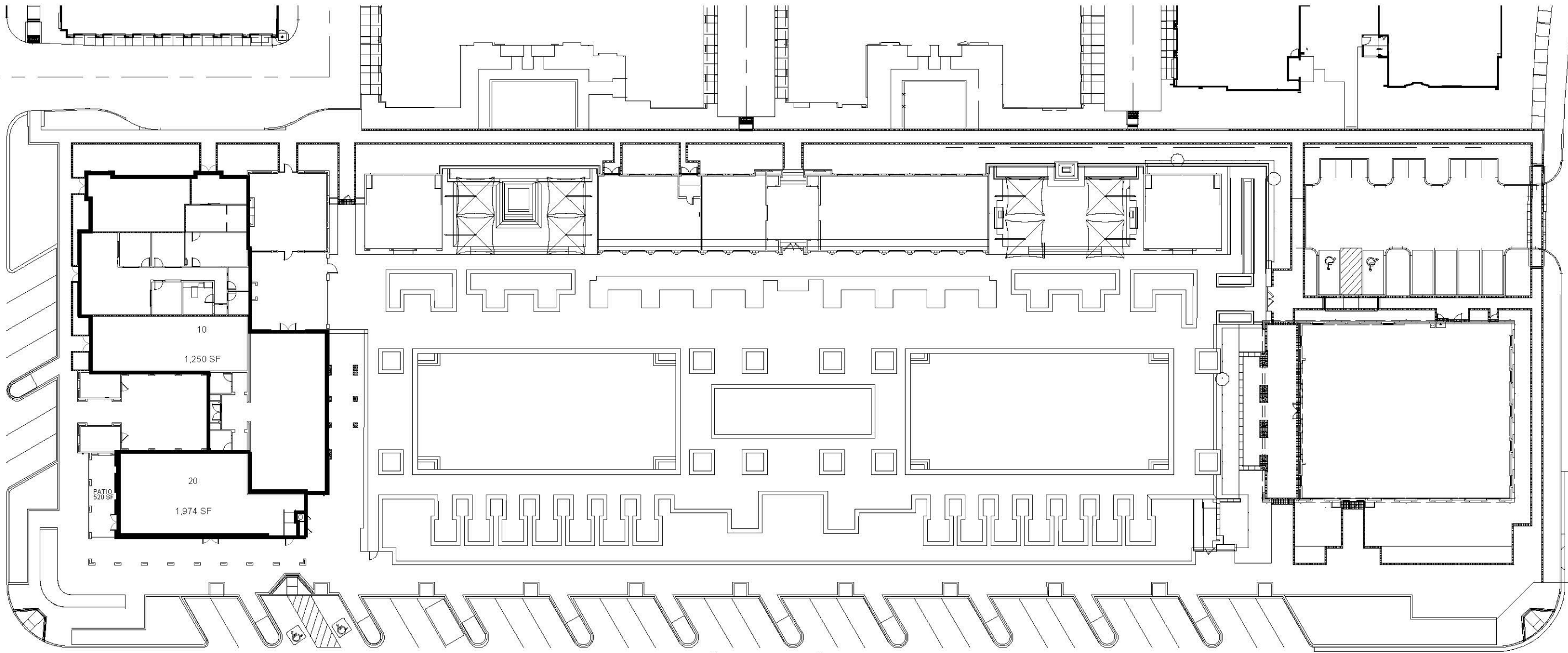


PINTADO

TELMO

GITANO



Map not to scale
IRVINE, CA

April 2024

IRVINE COMPANY | RETAIL PROPERTIES
Since 1864

© 2018 The Irvine Company LLC. All Rights Reserved. All properties are offered for lease by Irvine Management Company. Source: Nielsen Claritas 2018; OCTA 2017 Traffic Flow Map; Caltrans 2015, Saneyrville Transportation and Traffic 2011. This is an schematic plan intended only to show the general layout of the Shopping Center and the approximate location of the Branses, Pelican School, Irvine Spectrum, Irvine Spectrum Center, Irvine Towers, Los Olivos, Newport Center, Newport Center, Newport Ridge, Oak Creek, Oak Creek Golf Club, Orchard Hills, Pacific Ridge, Portola Springs, Quail Hill, The Irvine Ranch, The Square, Tustin Ridge, University Research Park, and Westpark. All registered trademarks of Irvine Management Company. Pelican Hills, Pelican Hill Golf Club, and The Resort at Pelican Hills are trademarks of The Irvine Company LLC. Landlord, at any time, may change the shape, size, location, number and content of the improvements shown hereon, as well as any additional improvements to any portion of the Shopping Center, its building, without its notice, including, parking areas or structures, roadways, curb cuts, temporary or permanent blocks, displays or stands, and may add land to under with/above land from the Shopping Center. PLEASE NOT TO SCALE.

LOS OLIVOS
APARTMENT VILLAGE