

Lang Cove

B A I L E Y A R C H I T E C T S

'We wanted to ensure the house could be adjusted to suit the prevailing winds or sunlight.'



This region of Northland, New Zealand, is predominantly farmland. However, the area is also known for its beaches, many of which, like Lang Cove, are relatively protected from the elements. Only an hour-and-a-half drive from Auckland, on the east coast of the North Island, Lang Cove is a popular destination for weekends.

This house, located at the southern end of the beach, is only separated from the sand by a 50-metre-wide grassed reserve. Like most popular beach resorts, there are houses either side. 'Our clients wanted privacy from neighbours. They wanted to feel as though they were on their own, at least when they're inside the house,' says architect Jason Bailey, director of Bailey Architects. Privacy was achieved by using carefully positioned fin walls to maintain lateral screening without blocking the views.

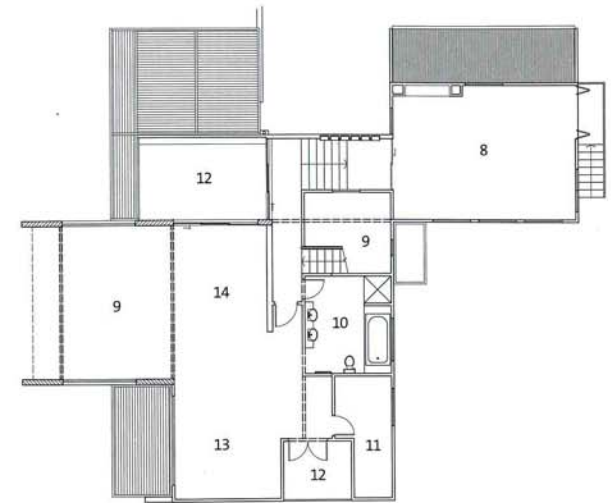
The original timber home on the site was mostly demolished. Walls from the original garage, together with a small amount of structure surrounding the entrance were incorporated in the new building. The new two-storey house is a combination of materials: painted pine weatherboard combined with in situ concrete for walls, plus glass and aluminium. Aluminium louvred screens form an important component

of the design. 'It's quite a calm environment, but the site is fairly exposed. We wanted to ensure the house could be adjusted in response to the prevailing winds or sunlight,' says Bailey, drawing across one of the external aluminium louvred screens on the terrace.

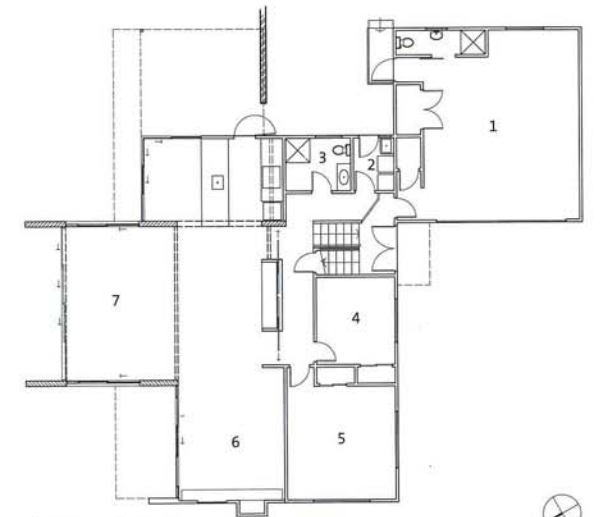
As the house is at the end of a relatively steep drive, one steps down from the garage into the main living area on the ground floor. The ground floor also includes a kitchen to one side of the living areas, a bedroom and separate office, as well as a laundry and powder room. The main bedroom, on the first floor, has a large sitting area, as well as a large terrace. The mezzanine-style bedroom also benefits from views over the lounge and across to the beach. 'The house was designed for a couple with adult children. They often come here on their own,' says Bailey, who didn't want the house to feel over-scaled. 'The upstairs is almost self-contained,' he adds.







Upper level floor plan



Lower level floor plan

- 1 Garage
- 2 Laundry
- 3 Bathroom
- 4 Office
- 5 Bedroom 2
- 6 Lounge
- 7 Sitting
- 8 Guest bedroom
- 9 Void
- 10 Bathroom
- 11 Walk-in robe
- 12 Balcony
- 13 Master bedroom sitting
- 14 Master bedroom

