



56

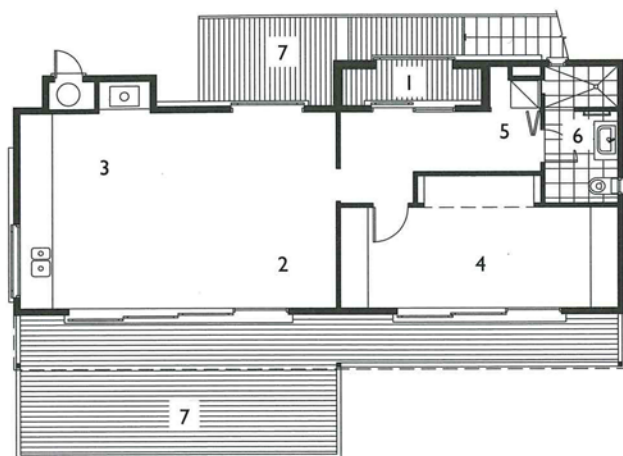
FOREST

BLACK

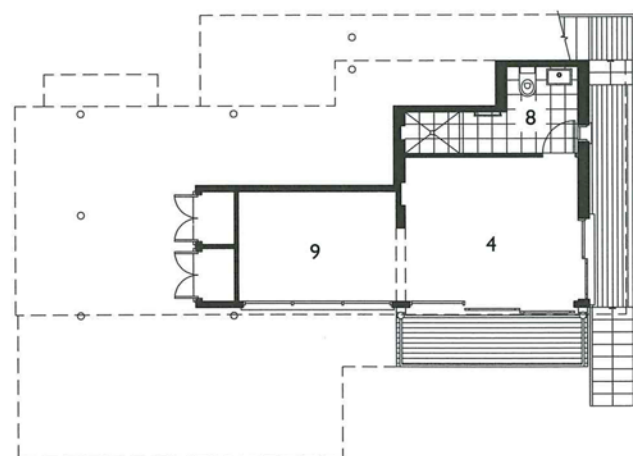
JASON BAILEY ARCHITECTURE + DESIGN MANAGEMENT

Surrounded by bush, this black timber house is both home and office for architect Jason Bailey. Previously Bailey was living in an apartment in Auckland and using this beach house only at weekends. However, as this house, located at Piha, is only a forty-five minute drive from Auckland, Bailey decided to sell the apartment and live and work from this picturesque coastal village. ■ While Piha is close to Auckland, there are strict building controls as a result of the area's sensitive environment. "I don't think I would have obtained permission to build an entirely new house", says Bailey. So rather than starting from scratch, Bailey used some of the structure from a 1980s house previously built on this site. "The '80s house was quite basic. But I was able to retain some of the structural foundations, including some of the flooring". ■ Bailey replaced the '80s house with a simple two-storey building, clad in western red cedar and stained black. The roof, like the house, is recessive, made from steel in a charcoal-black hue. The window- and doorframes are also black, made from powder-coated aluminium. "I wanted this house to disappear into the environment as much as possible. After all, it's more about the view", says Bailey, pointing out the landmark rock – the Lion Rock, overlooking the Tasman Sea. ■ The home's black exterior also provides a contrast to the home's essentially all-white interior. At ground level, with its own point of entry, is Bailey's studio, together with guest accommodation. On the first floor, also with its own entrance, are the kitchen and the living areas, together with main bedroom and bathroom. "It's a fairly modest project, not much more than 100 square metres combined", says Bailey, who estimates his home to be approximately the same size as the apartment he left behind in Auckland. "But this place feels considerably more spacious", adds Bailey, referring to the terraces and surrounding bush. ■ Bailey not only appreciates the views from both home and at work, he also enjoys seeing the house recede into the bush. "Black creates a continuous object. You're not distracted by superfluous detail", adds Bailey. ■ PHOTOGRAPHY: KALLAN MACLEOD





UPPER FLOOR



LOWER FLOOR

- 1 Entry
- 2 Living
- 3 Kitchen
- 4 Bedroom
- 5 Laundry
- 6 Bathroom
- 7 Deck
- 8 Ensuite
- 9 Study

0 5m

