

Always fill in a suitable area where run-off does not enter directly into drains and wear Personal Protective clothing according to the product label.

1. Half fill the sprayer tank with clean water.
2. Add the measured product according to personal calibration for your chosen label rate.
3. Rinse the measuring vessel and pour the rinsings into the tank.
4. Repeat 3. twice more.
5. If the product container has been emptied, triple rinse the container according to procedure below.
6. Fit the tank lid and gently shake the sprayer by rocking to ensure thorough mixing.
7. Remove the lid and top up with water to the correct level.

Caution: Do not overfill the tank or use excessive water pressure which can cause splash back and/or additional foam.



Roundup® is a registered trademark of the Bayer Group. Roundup® contains glyphosate.

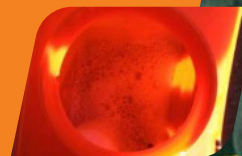
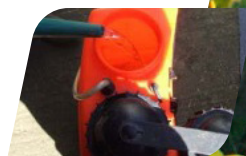
Use plant protection products safely. Always read the label and product information before use. Pay attention to the risk indications and follow the safety precautions on the label.

For further details consult the website

Web: <https://cropscience.bayer.co.uk/our-products/amenity>

© Bayer CropScience Ltd 2025

Best practice for filling and rinsing knapsack sprayers when using Roundup®



In order to achieve the best results with Roundup® products they must be applied correctly; these notes should help knapsack users get optimum results. Always maintain and inspect knapsack equipment regularly as required by the PPP Sustainable Use Regulations 2012 and follow the Code of Practice for using Plant Protection Products.

Useful tips

- Choose suitable nozzles for Roundup® products which should produce medium/coarse droplets in an even pattern and only spray using the rated pressure. See nozzle choice notes for more detail.
- Roundup® products are water based and are generally easy to handle and mix, but as they contain large amounts of surfactants (which act like detergents), they can generate foam if not handled correctly.

- Prior to use, check the lid is tightly closed and gently agitate the can to ensure a homogenous solution. Settling out is not normally an issue even after prolonged storage.
- It is advisable to keep a separate sprayer for using Roundup® to avoid contamination with liquid feed, fungicides or insecticides which may be applied to crops. Where the same sprayer is used for multiple products the triple rinsing procedure must be followed after Roundup® use.
- Make up only enough solution to use for one day, but if delayed use up within 3-4 days as microbes in the water will start to degrade the glyphosate and the mix will lose efficacy.

Triple Rinsing for Knapsack Sprayers

After the spraying operation is finished always wash out the knapsack sprayer and store in a dry, frost-free place when not in use.

1. Fill the sprayer 10 – 20% full of water
2. Replace the lid securely

3. Depending on sprayer size shake, rotate or roll it vigorously to rinse all inside surfaces
4. Spray the washings out over a gravelled or weed-free natural surface, never over hard surfaces or drains.
5. Repeat steps 1 to 4 adding household detergent. Household bleach (hypochlorite) may also be added.
6. Remove the nozzle and filter repeat steps 1 to 4 with clean water, ensuring complete drainage on the last emptying.
7. Refit the nozzle assembly.

Triple Rinsing of Empty Containers

1. Part-fill with 10-20% water, secure cap.
2. Roll or gently shake the container and remove the cap slowly.
3. Add the rinsings to the tank allowing the pack to drain for at least 30 seconds.
4. Repeat twice more.
5. Dispose of containers as non-hazardous industrial waste.

For best results with Roundup® products they must be applied correctly