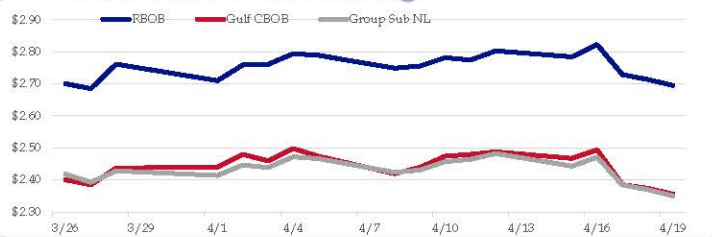


Gasoline

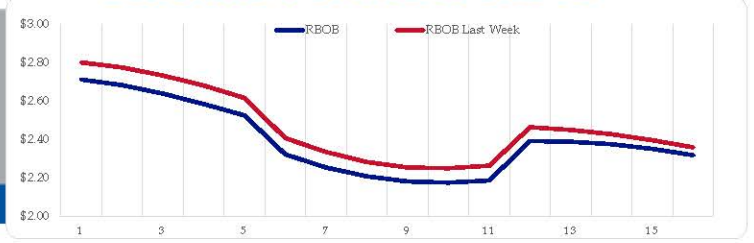
	RBOB	Change	Gulf CBOB	Change	Group Sub NL	Change	Gulf Basis	Group Basis	LA Basis
4/19	\$2.6949	-\$0.0188	\$2.3553	-\$0.0185	\$2.3501	-\$0.0193	\$ (0.3401)	\$ (0.3452)	\$ 0.3545
4/18	\$2.7137	-\$0.0150	\$2.3738	-\$0.0113	\$2.3694	-\$0.0146	\$ (0.3399)	\$ (0.3444)	\$ 0.3560
4/17	\$2.7287	-\$0.0936	\$2.3852	-\$0.1087	\$2.3839	-\$0.0867	\$ (0.3436)	\$ (0.3448)	\$ 0.3960
4/16	\$2.8223	\$0.0384	\$2.4939	\$0.0264	\$2.4707	\$0.0277	\$ (0.3285)	\$ (0.3517)	\$ 0.3960
4/15	\$2.7839	-\$0.0190	\$2.4675	-\$0.0199	\$2.4430	-\$0.0392	\$ (0.3165)	\$ (0.3410)	\$ 0.4145
4/12	\$2.8029	\$0.0288	\$2.4874	\$0.0075	\$2.4822	\$0.0179	\$ (0.3155)	\$ (0.3208)	\$ 0.4797
4/11	\$2.7741	-\$0.0075	\$2.4799	\$0.0059	\$2.4643	\$0.0075	\$ (0.2943)	\$ (0.3098)	\$ 0.4796
4/10	\$2.7816	\$0.0260	\$2.4739	\$0.0347	\$2.4568	\$0.0260	\$ (0.3077)	\$ (0.3248)	\$ 0.4918

RBOB Technicals		
Indicator	Direction	Resistance
MACD	Neutral	2.9859 Sep High
Stochastics	Bearish	2.8516 2024 High
RSI	Neutral	2.0072 Jan 2024 Low
ADX	Bullish Trend	1.9672 Dec 2023 Low
Momentum	Bearish	
Bias:	Neutral	

Gasoline History



Gasoline Forward Curve

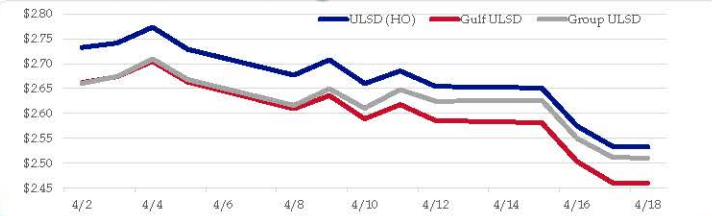


Diesel

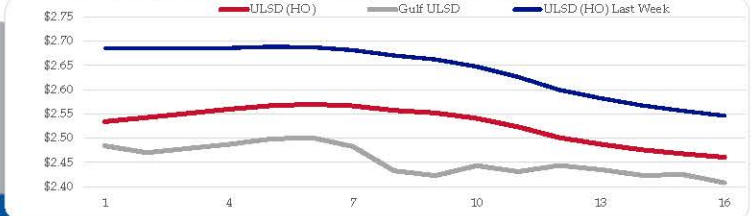
	ULSD (HO)	Change	Gulf ULSD	Change	Group ULSD	Change	Gulf Basis	Group Basis	LA Basis
4/19	\$2.5329	-\$0.0010	\$2.4602	-\$0.0010	\$2.5104	-\$0.0014	\$ (0.0737)	\$ (0.0227)	\$ 0.0355
4/18	\$2.5339	-\$0.0408	\$2.4607	-\$0.0428	\$2.5118	-\$0.0383	\$ (0.0732)	\$ (0.0221)	\$ 0.0345
4/17	\$2.5747	-\$0.0766	\$2.5035	-\$0.0778	\$2.5501	-\$0.0764	\$ (0.0712)	\$ (0.0246)	\$ 0.0345
4/16	\$2.6513	-\$0.0029	\$2.5813	-\$0.0046	\$2.6266	\$0.0022	\$ (0.0700)	\$ (0.0248)	\$ 0.0345
4/15	\$2.6542	-\$0.0309	\$2.5859	-\$0.0320	\$2.6243	-\$0.0235	\$ (0.0683)	\$ (0.0299)	\$ 0.0345
4/12	\$2.6851	\$0.0253	\$2.6179	\$0.0290	\$2.6478	\$0.0375	\$ (0.0672)	\$ (0.0373)	\$ 0.0695
4/11	\$2.6598	-\$0.0478	\$2.5889	-\$0.0470	\$2.6103	-\$0.0391	\$ (0.0709)	\$ (0.0495)	\$ 0.0695
4/10	\$2.7076	\$0.0306	\$2.6359	\$0.0266	\$2.6494	\$0.0333			

HO Technicals		
Indicator	Direction	Resistance
MACD	Neutral	3.0476 Nov High
Stochastics	Oversold	2.9735 Feb High
RSI	Neutral	2.4840 Dec Low
ADX	Bearish	2.3750 July Low
Momentum	Bearish	
Bias:	Neutral	

Diesel History



Diesel Forward Curve



Crude

	WTI	Change	Brent	Change
4/19	\$82.42	-\$0.31	\$86.42	-\$0.69
4/18	\$82.73	\$0.04	\$87.11	-\$0.18
4/17	\$82.69	-\$2.67	\$87.29	-\$2.73
4/16	\$85.36	-\$0.05	\$90.02	-\$0.08
4/15	\$85.41	-\$0.25	\$90.10	\$0.36
CPL space	Line 1 0.1025	Change -\$0.0175	Line 2 -0.0095	Change \$0.0012

Refinery Margins

Vs WTI				Vs Brent				Group / WCS
Gulf Gas	Gulf Diesel	3/2/1	5/3/2	Gulf Gas	Gulf Diesel	3/2/1	5/3/2	3/2/1
\$16.97	\$20.62	\$18.19	\$18.43	\$12.59	\$16.24	\$13.81	\$14.05	\$ 30.82
\$17.49	\$22.46	\$19.14	\$19.47	\$12.89	\$17.86	\$14.54	\$14.87	\$ 31.76
\$19.38	\$23.05	\$20.61	\$20.85	\$14.72	\$18.39	\$15.95	\$16.19	\$ 32.59
\$18.22	\$23.20	\$19.88	\$20.21	\$13.53	\$18.51	\$15.19	\$15.52	\$ 31.73
\$18.81	\$24.29	\$20.64	\$21.00	\$14.73	\$20.21	\$16.56	\$16.92	\$ 32.91

Economic Indicators

Commodity Futures

	Settle	Change		Settle	Change
S&P 500 Futures	5,051	1.50	US NatGas	1.712	0.045
DJIA	37,775	22.07	TTF NatGas	10.11	0.3
Nasdaq 100	17,394	-99.31	Gold	2,382	-5.0
EUR/USD	1.0655	0.0027	Silver	28.33	-0.1
USD Index	105.98	-0.22	Copper	359.50	1.500
US 10 YR YIELD	4.64%	0.05	FCOJ	1134.25	2.50
US 2 YR YIELD	4.98%	1.05	Wheat	536.75	4.25
Oil Volatility Index (OVX)	33.00	-0.60	Butane	0.964	-0.006
S&P Volatility Index (VIX)	18.21	-0.21	Propane	0.808	-0.003
Nikkei 225 Index	37,820	-240.00	Feeder Cattle	241.6	0.20
			Bitcoin	63,660	1,750

RINs and Price Drivers

Current Year Bio RINs (D4)			Current Year Ethanol RINs (D6)		
	Settle	Net Change		Settle	Net Change
	0.4545	0.003		0.4510	0.003
Price Drivers			Price Drivers		
Soybeans	Settle 1134.25	Net Change 2.500	Ethanol	Settle 1.63	Net Change 0.002
Soybean Oil	44.12	-0.350	Com	426.75	3.250
BOHO Spread	0.775		Com Crush	0.102	
Soy Crush	481.41		RVO Estimate		
			Per Gallon	\$ 0.0640	\$ -
			Per Barrel	\$ 2.69	\$ -

*SOURCES: Nymex, CBOT, NYSE, ICE, NASDAQ, CME Group, CBOE. Prices delayed.

"NYMEX NY Harbor ULSD Futures Electronic (Front Month)" Δ 2.5347 H 2.6488 Lo 2.5137 L 2.5250 Δ V 7,915 OI 38,006

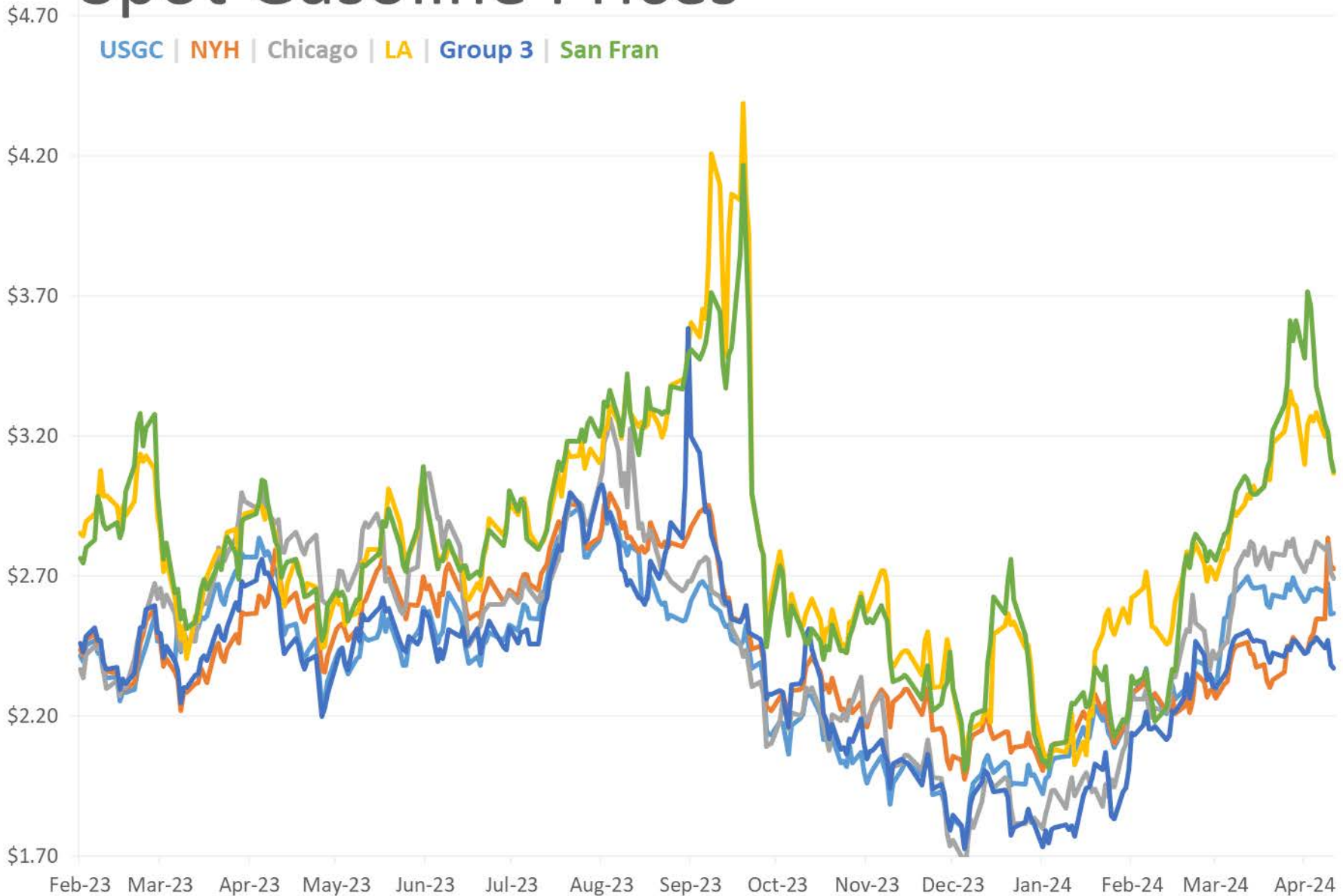


/GHO<0>
Open --
High --
Low --
Close --
8 AM (4/19)

10 AM

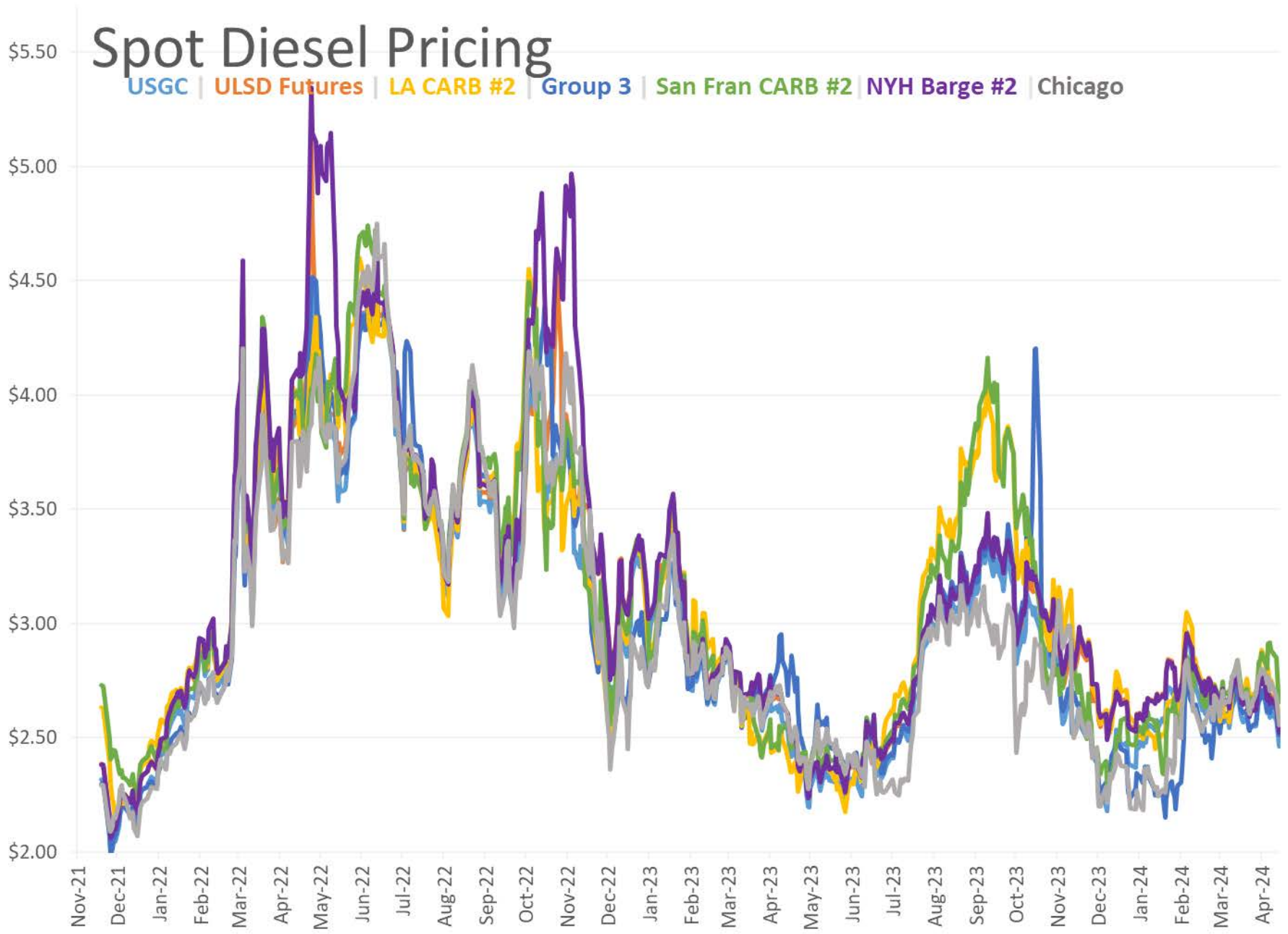
Spot Gasoline Prices

USGC | NYH | Chicago | LA | Group 3 | San Fran



Spot Diesel Pricing

USGC | ULSD Futures | LA CARB #2 | Group 3 | San Fran CARB #2 | NYH Barge #2 | Chicago



Current Year RIN Values

