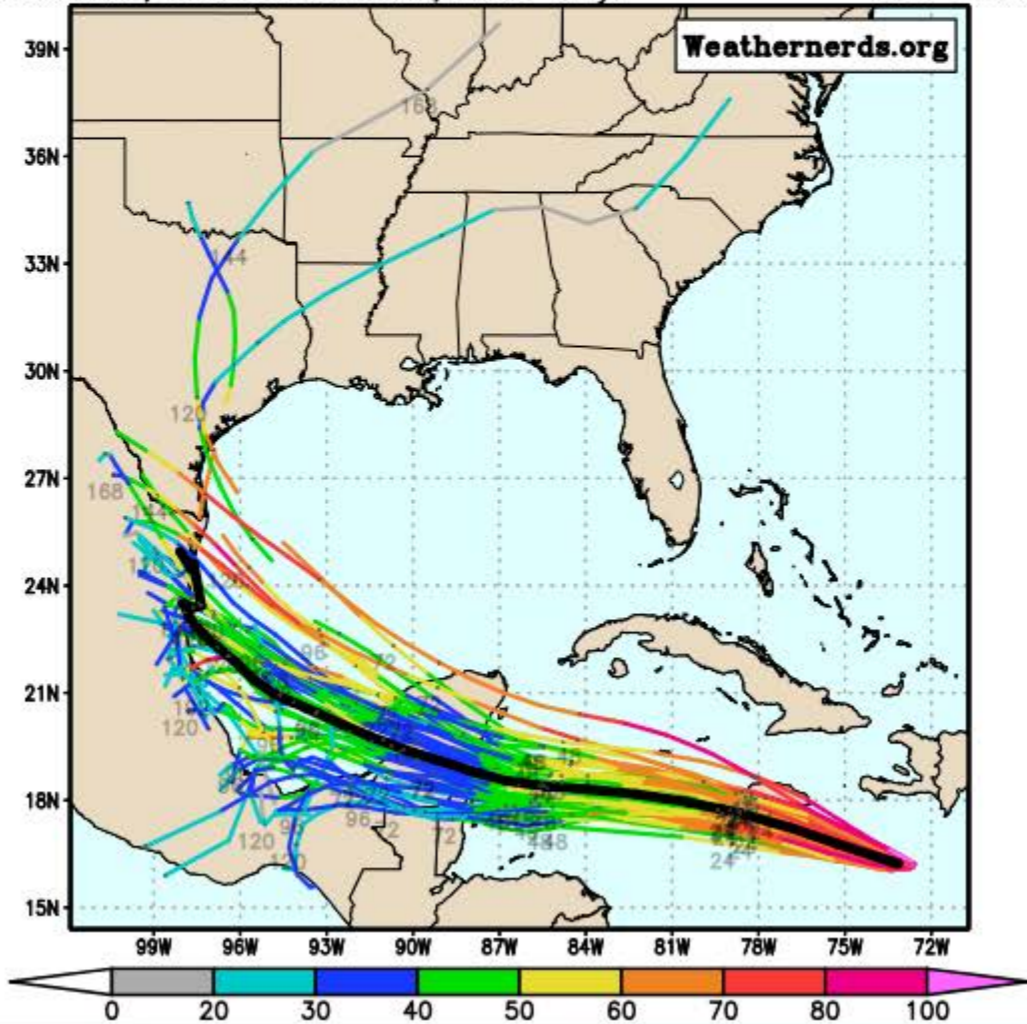


ECMWF Ensemble

Loop

(click for larger image)

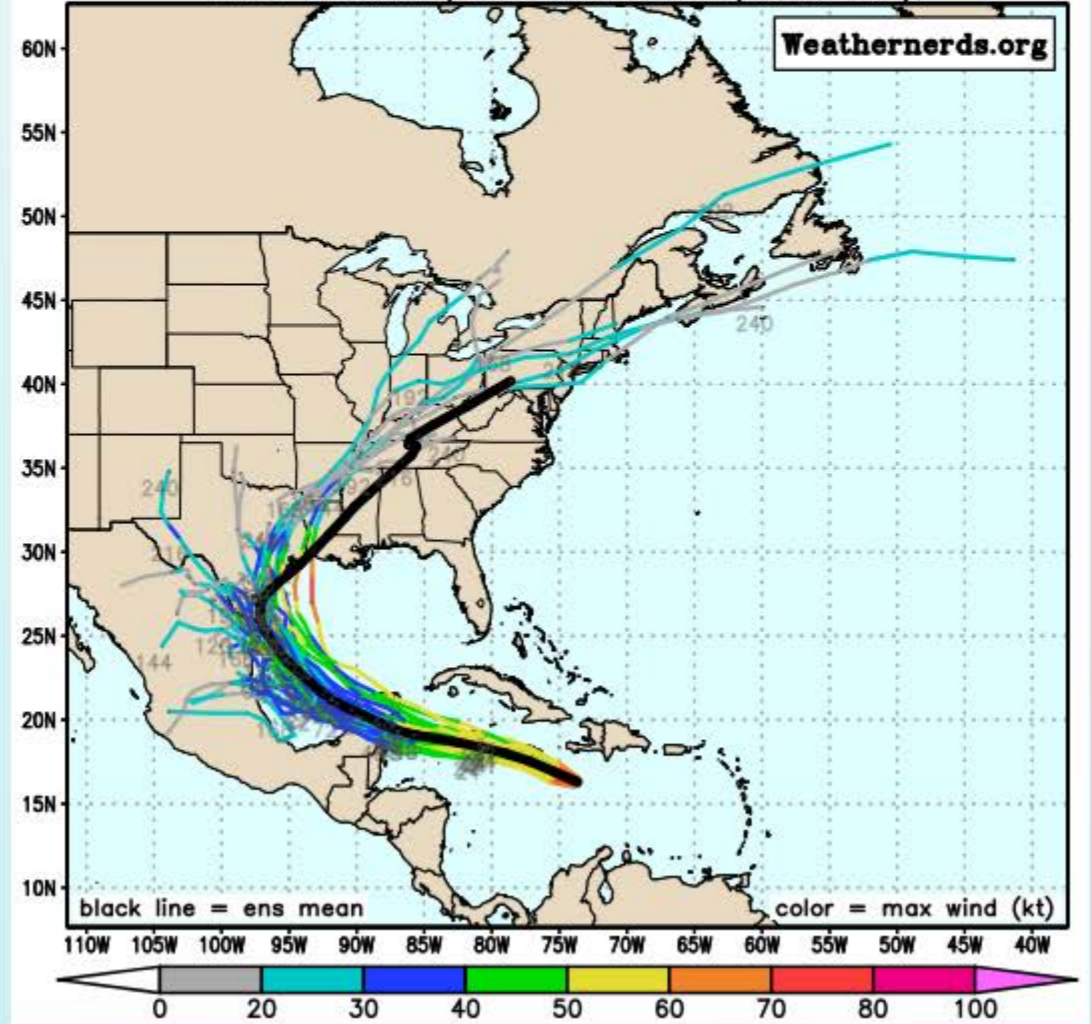
ECMWF Ensemble, init: 2024070300, AL02 Beryl color = max wind (kt)

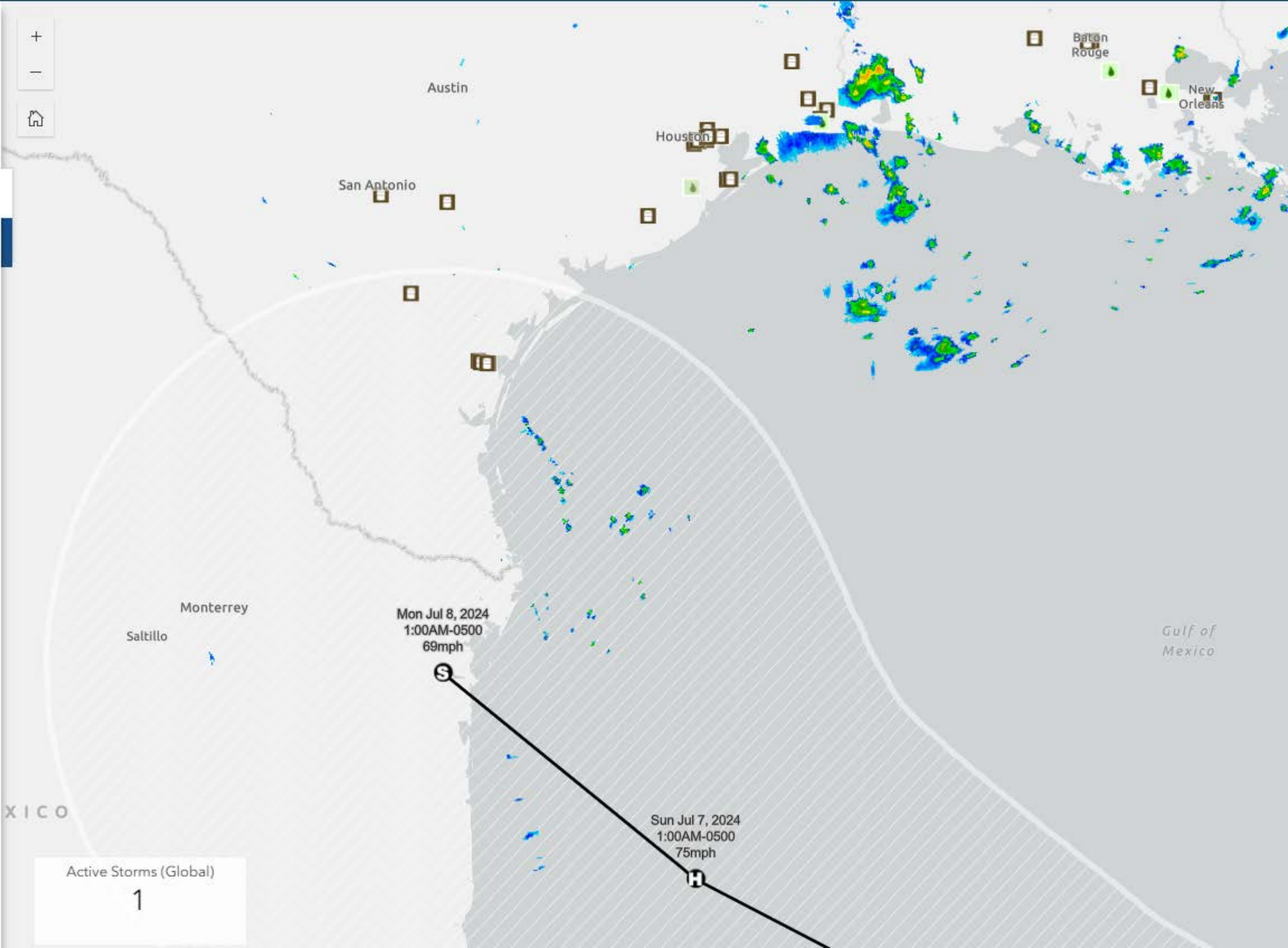


GEFS Ensemble

(click for larger image)

GEFS Ensemble, init: 2024070306, AL02 Beryl





Austin

Houston

San Antonio

Baton Rouge

New Orleans

Monterrey

Saltillo

Gulf of Mexico

Mon Jul 8, 2024
1:00AM-0500
69mph

Sun Jul 7, 2024
1:00AM-0500
75mph

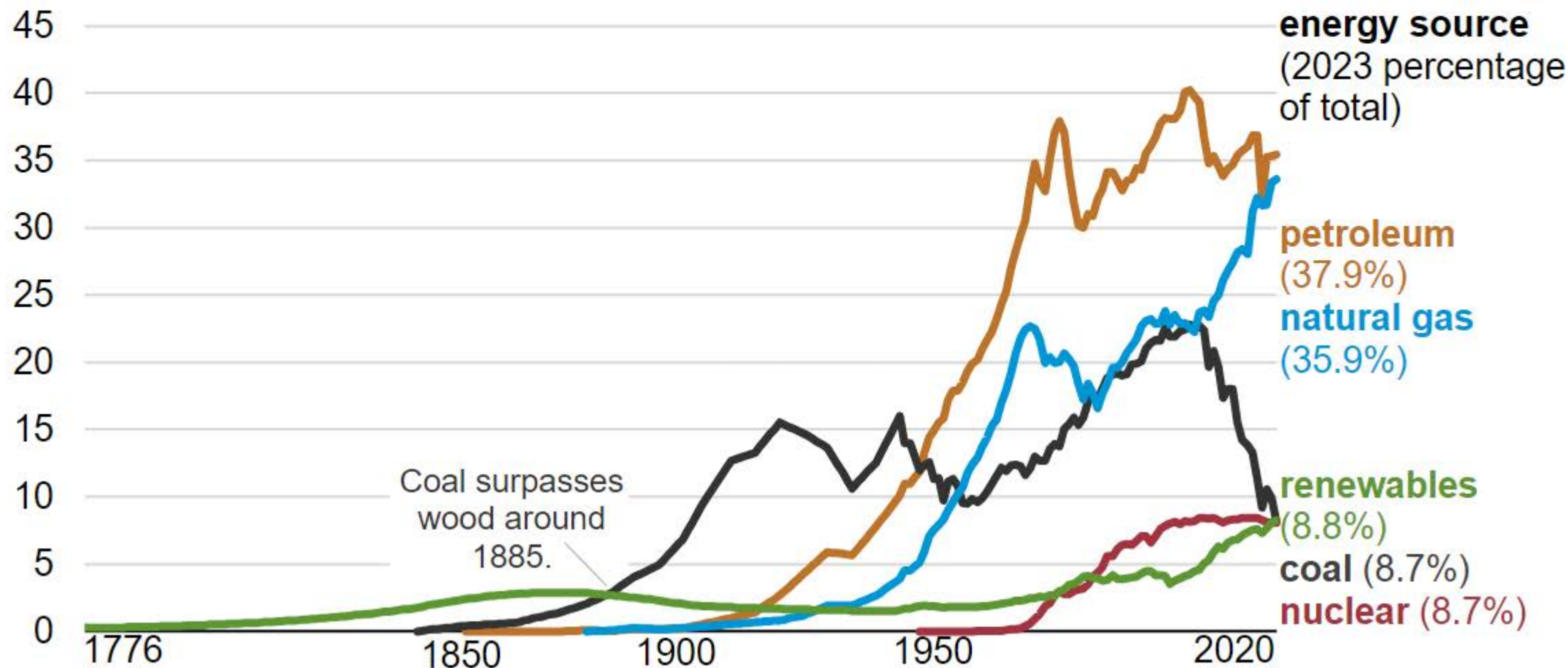
Active Storms (Global)

1

How has energy use changed throughout U.S. history?

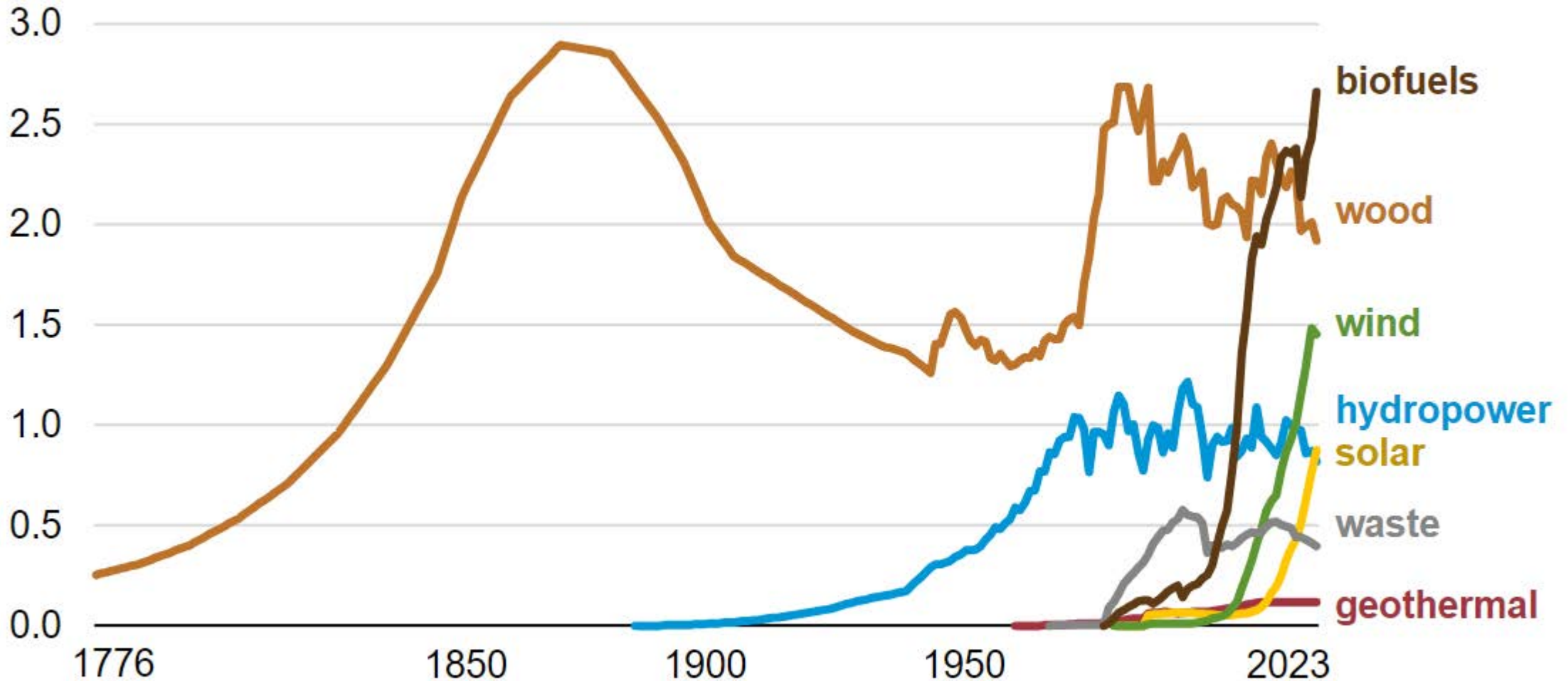
Annual U.S. energy consumption (1776–2023)

quadrillion British thermal units



Renewable energy consumption in the United States (1776–2023)

quadrillion British thermal units

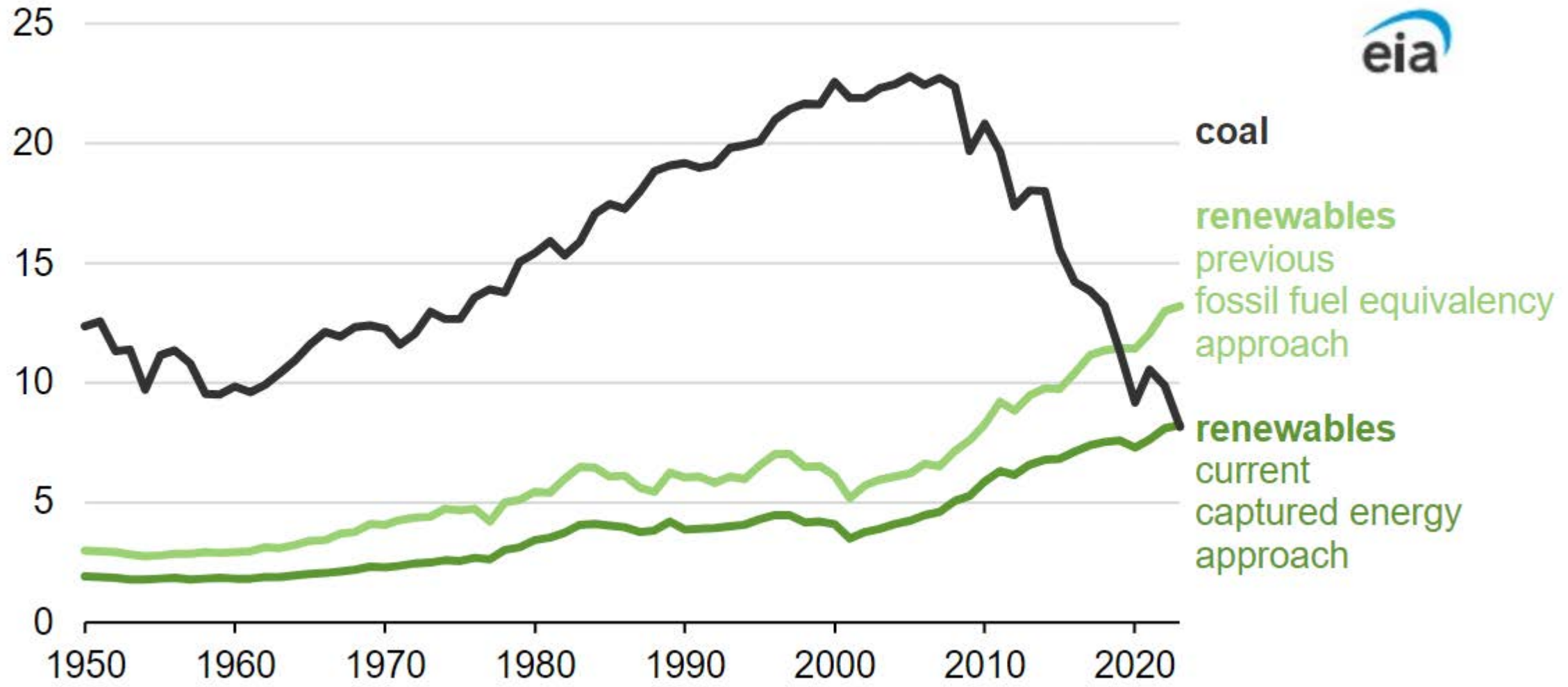


Data source: U.S. Energy Information Administration, *Monthly Energy Review*. Pre-1949 data based on *Energy in the American Economy, 1850–1975: Its History and Prospects* and U.S. Department of Agriculture Circular No. 641, *Fuel Wood Used in the United States 1630–1930*

Note: Data use captured energy approach to account for wind, hydro, solar, and geothermal.

U.S. coal and renewable energy consumption, by conversion approach (1950–2023)

quadrillion British thermal units



Data source: U.S. Energy Information Administration, *Monthly Energy Review*