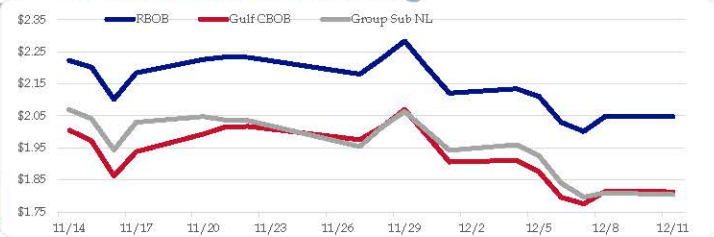


**Gasoline**

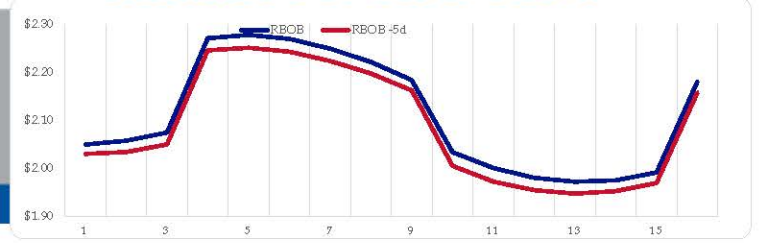
	RBOB	Change	Gulf CBOB	Change	Group Sub NL	Change	Gulf Basis	Group Basis	LA Basis
12/11	\$2.0476	<b>-\$0.0022</b>	\$1.8130	<b>-\$0.0019</b>	\$1.8041	<b>-\$0.0057</b>	\$ (0.2351)	\$ (0.2438)	\$ 0.2445
12/8	\$2.0498	<b>\$0.0486</b>	\$1.8149	<b>\$0.0398</b>	\$1.8098	<b>\$0.0134</b>	\$ (0.2349)	\$ (0.2400)	\$ 0.2460
12/7	\$2.0012	<b>-\$0.0290</b>	\$1.7752	<b>-\$0.0203</b>	\$1.7964	<b>-\$0.0434</b>	\$ (0.2261)	\$ (0.2048)	\$ 0.4210
12/6	\$2.0302	<b>-\$0.0801</b>	\$1.7955	<b>-\$0.0796</b>	\$1.8398	<b>-\$0.0858</b>	\$ (0.2347)	\$ (0.1904)	\$ 0.4460
12/5	\$2.1103	<b>-\$0.0239</b>	\$1.8751	<b>-\$0.0361</b>	\$1.9256	<b>-\$0.0341</b>	\$ (0.2352)	\$ (0.1847)	\$ 0.2745
12/4	\$2.1342	<b>\$0.0131</b>	\$1.9112	<b>\$0.0056</b>	\$1.9597	<b>\$0.0176</b>	\$ (0.2230)	\$ (0.1745)	\$ 0.1697
12/1	\$2.1211	<b>-\$0.0787</b>	\$1.9056	<b>-\$0.0825</b>	\$1.9421	<b>-\$0.0602</b>	\$ (0.2155)	\$ (0.1791)	\$ 0.1796
11/30	\$2.1998	<b>-\$0.0838</b>	\$1.9881	<b>-\$0.0815</b>	\$2.0023	<b>-\$0.0616</b>	\$ (0.2117)	\$ (0.1976)	\$ 0.1978

RBOB Technicals		
Indicator	Direction	Resistance
MACD	Neutral	2.9936 2023 High
Stochastics	Oversold	2.7703 Sep High
RSI	Oversold	1.9980 2023 Low
ADX	Bearish	2.0204 Dec 2022 Low
Momentum	Bearish	
Bias:	Neutral	

**Gasoline History**



**Gasoline Forward Curve**

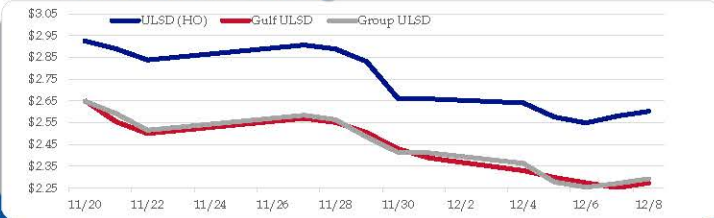


**Diesel**

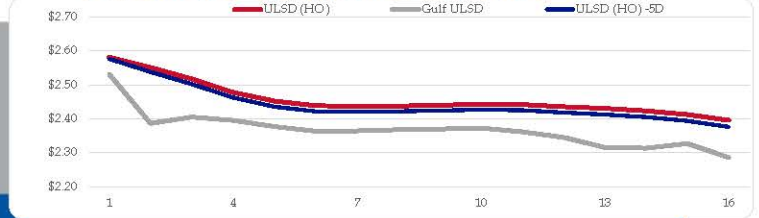
	ULSD (HO)	Change	Gulf ULSD	Change	Group ULSD	Change	Gulf Basis	Group Basis	LA Basis
12/11	\$2.6022	<b>\$0.0212</b>	\$2.2738	<b>\$0.0212</b>	\$2.2928	<b>\$0.0214</b>	\$ (0.3295)	\$ (0.3096)	\$ 0.0105
12/8	\$2.5810	<b>\$0.0318</b>	\$2.2521	<b>-\$0.0225</b>	\$2.2714	<b>\$0.0168</b>	\$ (0.3290)	\$ (0.3096)	\$ 0.0095
12/7	\$2.5492	<b>-\$0.0270</b>	\$2.2745	<b>-\$0.0247</b>	\$2.2546	<b>-\$0.0231</b>	\$ (0.2747)	\$ (0.2946)	\$ 0.0095
12/6	\$2.5762	<b>-\$0.0649</b>	\$2.2992	<b>-\$0.0315</b>	\$2.2777	<b>-\$0.0860</b>	\$ (0.2770)	\$ (0.2985)	\$ 0.0095
12/5	\$2.6411	<b>-\$0.0186</b>	\$2.3308	<b>-\$0.0579</b>	\$2.3637	<b>-\$0.0487</b>	\$ (0.3104)	\$ (0.2774)	\$ 0.0095
12/4	\$2.6597	<b>-\$0.0018</b>	\$2.3887	<b>-\$0.0414</b>	\$2.4124	<b>-\$0.0021</b>	\$ (0.2710)	\$ (0.2473)	\$ 0.0145
12/1	\$2.6615	<b>-\$0.1690</b>	\$2.4301	<b>-\$0.0744</b>	\$2.4145	<b>-\$0.0702</b>	\$ (0.2314)	\$ (0.2470)	\$ 0.0595
11/30	\$2.8305	<b>-\$0.0580</b>	\$2.5045	<b>-\$0.0470</b>	\$2.4847	<b>-\$0.0791</b>			

HO Technicals		
Indicator	Direction	Resistance
MACD	Neutral	3.5800 2003 High
Stochastics	Oversold	3.5092 Sep High
RSI	Oversold	2.5468 Dec Low
ADX	Bearish	2.3750 July Low
Momentum	Neutral	
Bias:	Neutral	

**Diesel History**



**Diesel Forward Curve**



**Crude**

**Refinery Margins**

WTI		Change	Brent		Change	Vs WTI				Vs Brent				Group / WCS				
12/11	12/8	12/7	12/6	12/5	CPL space	Line 1	Change	Line 2	Change	Gulf Gas	Gulf Diesel	3/2/1	5/3/2	Gulf Gas	Gulf Diesel	3/2/1	5/3/2	3/2/1
\$71.20	\$71.23	\$69.34	\$69.38	\$72.32	0.0850		<b>-\$0.0013</b>	\$0.0805	<b>-\$0.0488</b>	\$5.00	\$23.36	\$11.12	\$12.34	\$0.39	\$18.75	\$6.51	\$7.73	\$ 25.13
		<b>-\$0.03</b>	<b>\$1.89</b>	<b>-\$0.04</b>						\$5.22	\$26.19	\$12.21	\$13.61	\$0.51	\$21.48	\$7.50	\$8.90	\$ 24.52
			<b>-\$2.94</b>							\$6.03	\$27.19	\$13.08	\$14.49	\$1.11	\$22.27	\$8.16	\$9.57	\$ 26.02
		<b>-\$0.72</b>		<b>-\$1.68</b>						\$6.43	\$25.57	\$12.81	\$14.09	\$1.55	\$20.69	\$7.93	\$9.21	\$ 26.69
										\$7.23	\$27.29	\$13.92	\$15.25	\$1.39	\$21.45	\$8.08	\$9.41	\$ 27.61

**Economic Indicators**

**Commodity Futures**

	Settle	Change		Settle	Change
S&P 500 Futures	4,603	<b>-4.50</b>	US NatGas	2.581	<b>-0.004</b>
DJIA	36,248	<b>130.49</b>	TTF NatGas	12.20	<b>-0.5</b>
EUR/USD	1.0762	<b>-0.0003</b>	Gold	1,998	<b>-5.7</b>
USD Index	103.98	<b>0.13</b>	Silver	22.97	<b>-0.1</b>
US 10 YR YIELD	4.23%	<b>0.09</b>	Copper	371.35	<b>3.150</b>
US 2 YR YIELD	4.71%	<b>0.13</b>	FCO J	1304.00	<b>12.25</b>
Oil Volatility Index	37.82	<b>-1.58</b>	Wheat	615.00	
S&P Volatility Index (VIX)	13.06	<b>-0.71</b>	Butane	1.071	<b>0.006</b>
Nikkei 225 Index	32,595	<b>325.00</b>	Propane	0.694	<b>-0.001</b>
			Bitcoin	42,935	<b>-2,685</b>

**RINs and Price Drivers**

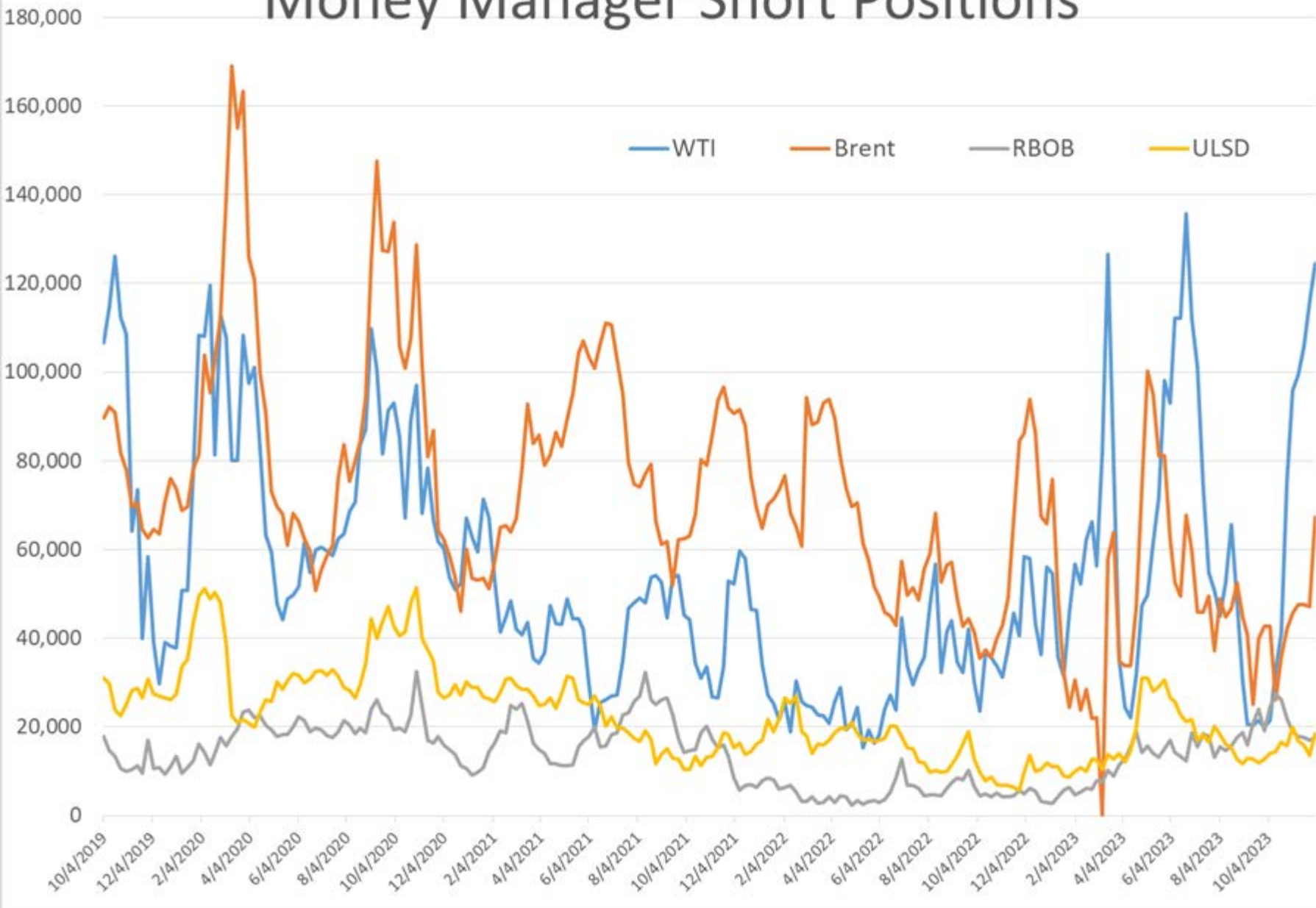
Current Year Biodiesel RINs			Current Year Ethanol RINs		
	Settle	Net Change		Settle	Net Change
	0.8245	<b>-0.002</b>		0.8185	<b>-0.007</b>
Price Drivers			Price Drivers		
Soybeans	1304.00	<b>12.600</b>	Ethanol	1.72	<b>-0.005</b>
Soybean Oil	50.15		Com	465.75	<b>-0.250</b>
BOHO Spread	1.180		Com Crush	0.052	
Soy Crush	547.94		RVO Estimate		
			Per Gallon	\$ 0.1030	<b>(\$ 0.0010)</b>
			Per Barrel	\$ 4.33	<b>(\$ 0.04)</b>

\*SOURCES: Nymex, CBOT, NYSE, ICE, NASDAQ, CME Group, CBOE. Prices delayed.

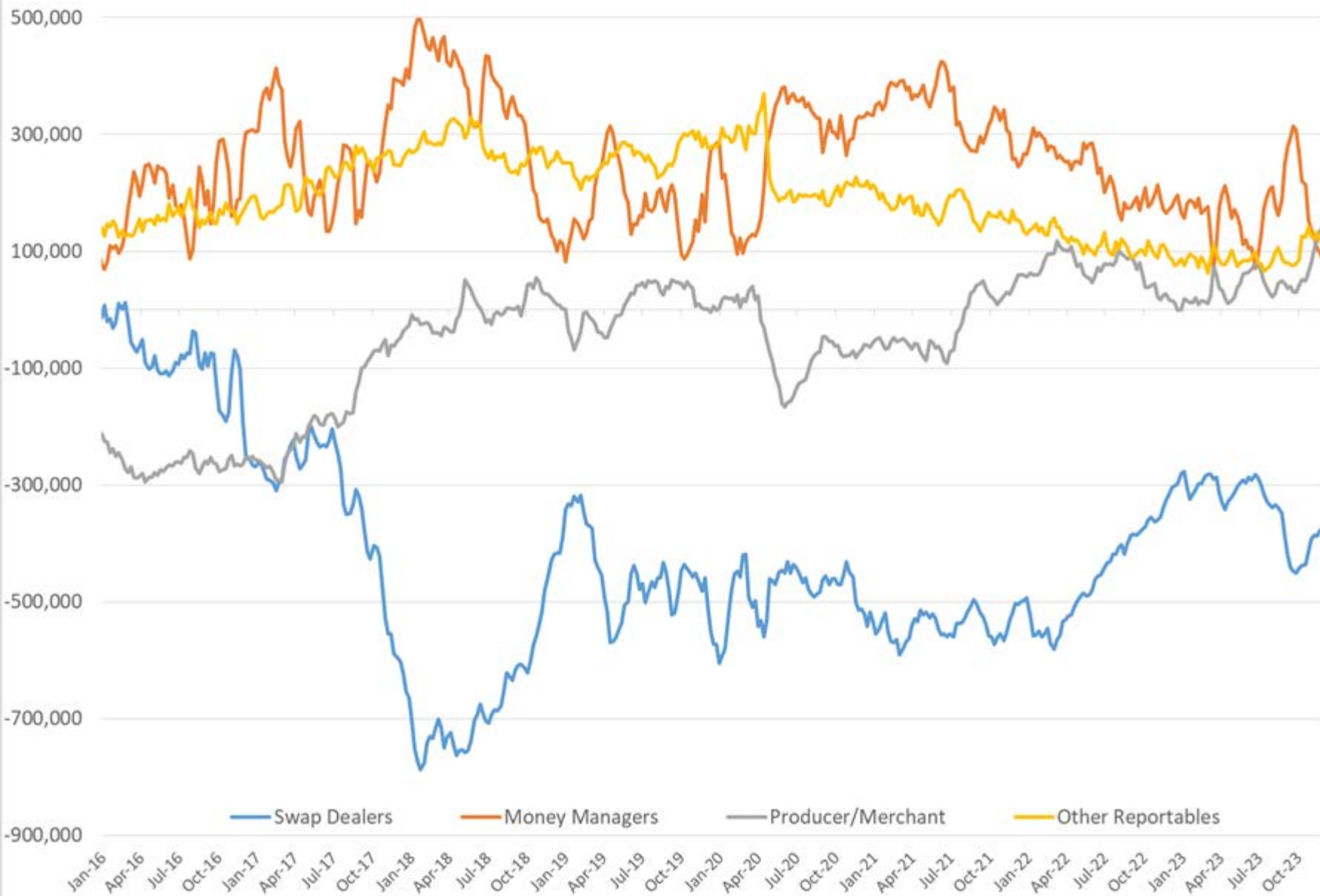
## Commitment of Traders Report - Money Manager Recap

Date of compilation	HO Managed				WTI Managed			RBOB Managed				Brent Managed			LS Gasoil Managed					
	Long Positions	Short Positions	HO Open Interest	Net Position	Long Positions	Short Positions	WTI Open Interest	Net Position	Long Positions	Short Positions	RBOB Open Interest	Net Position	Long Positions	Short Positions	Brent Open Interest	Net Position	Long Positions	Short Positions	LS Gasoil Open Interest	Net Position
12/6/2023	47,396	18,424	312,370	28,972	211,882	124,330	2,138,521	87,552	83,176	17,687	341,560	65,489	210,302	67,293	2,529,258	143,009	65,738	52,945	659,899	12,793
11/28/2023	49,864	13,689	308,447	36,175	213,925	115,788	2,052,776	98,137	83,296	16,967	344,150	66,329	213,872	47,137	2,583,107	166,735	71,953	43,909	666,373	28,044
1 Week	(2,468)	4,735	3,923	(7,203)	(2,043)	8,542	85,745	(10,585)	(120)	720	(2,590)	(840)	(3,570)	20,156	(53,849)	(23,726)	(6,215)	9,036	(6,474)	(15,251)
% Change	-4.9%	34.6%	1.3%	-19.9%	-1.0%	7.4%	4.2%	-10.8%	-0.1%	4.2%	-0.8%	-1.3%	-1.7%	42.8%	-2.1%	-14.2%	-8.6%	20.6%	-1.0%	-54.4%
1 Year	16,998	8,732	49,704	8,266	(17,787)	65,938	251,429	(83,725)	25,641	12,764	84,862	12,877	29,010	(18,974)	285,694	47,984	6,378	31,624	189,875	(25,246)
% Change	56%	90%	19%	40%	-8%	113%	13%	-49%	45%	259%	33%	24%	16%	-22%	13%	50%	11%	148%	40%	-66%

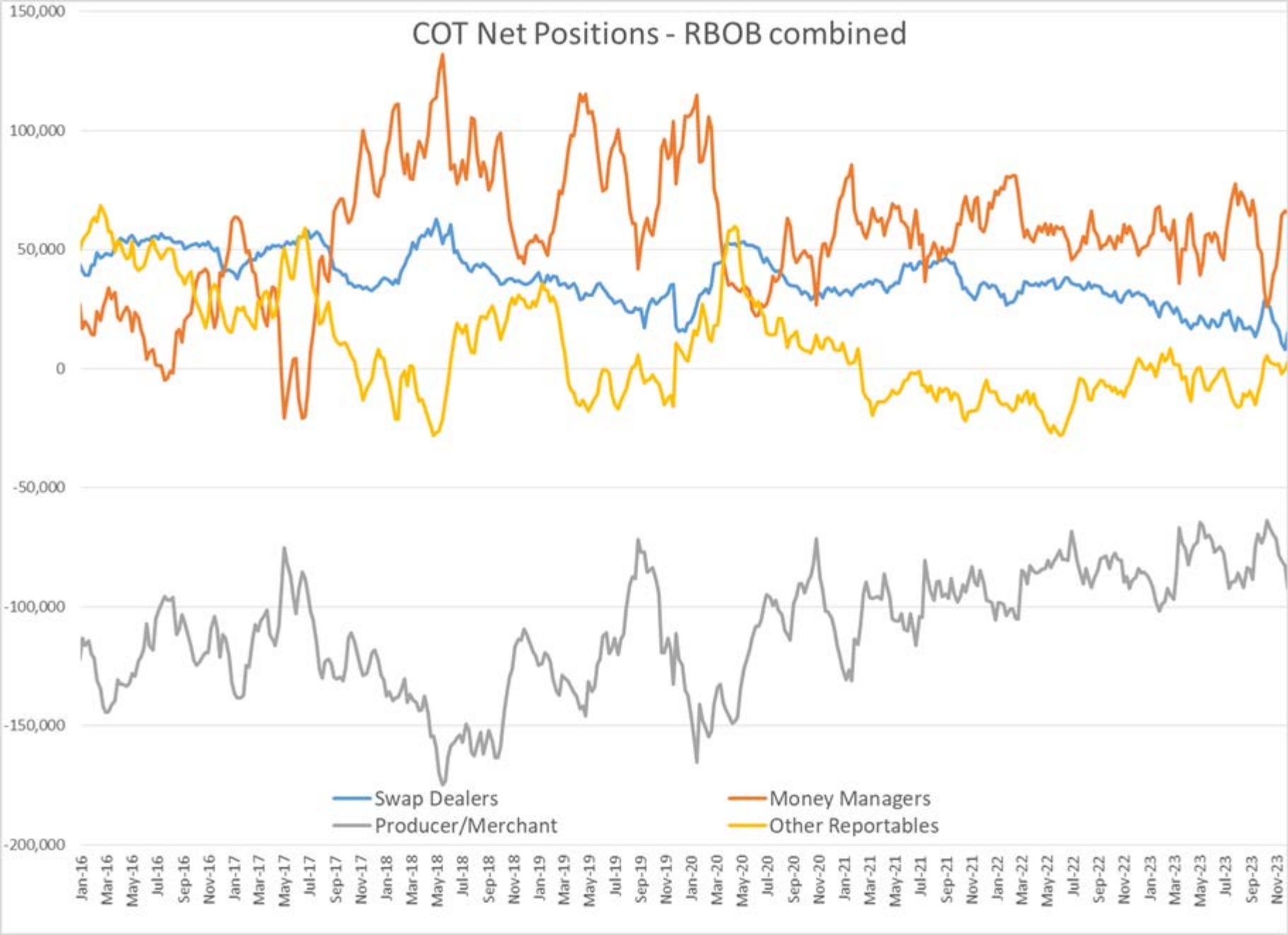
# Money Manager Short Positions



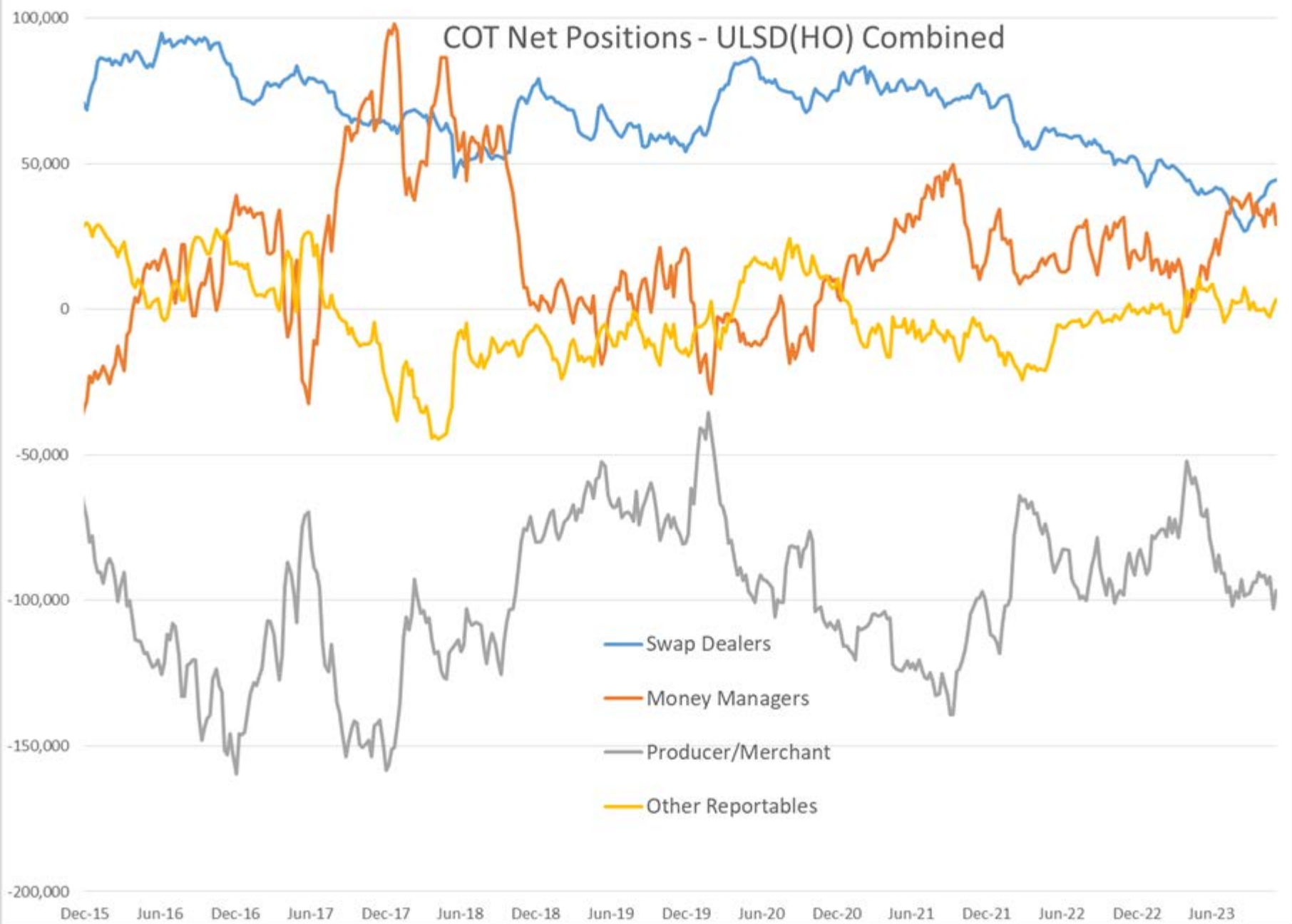
# COT Net Positions - WTI combined



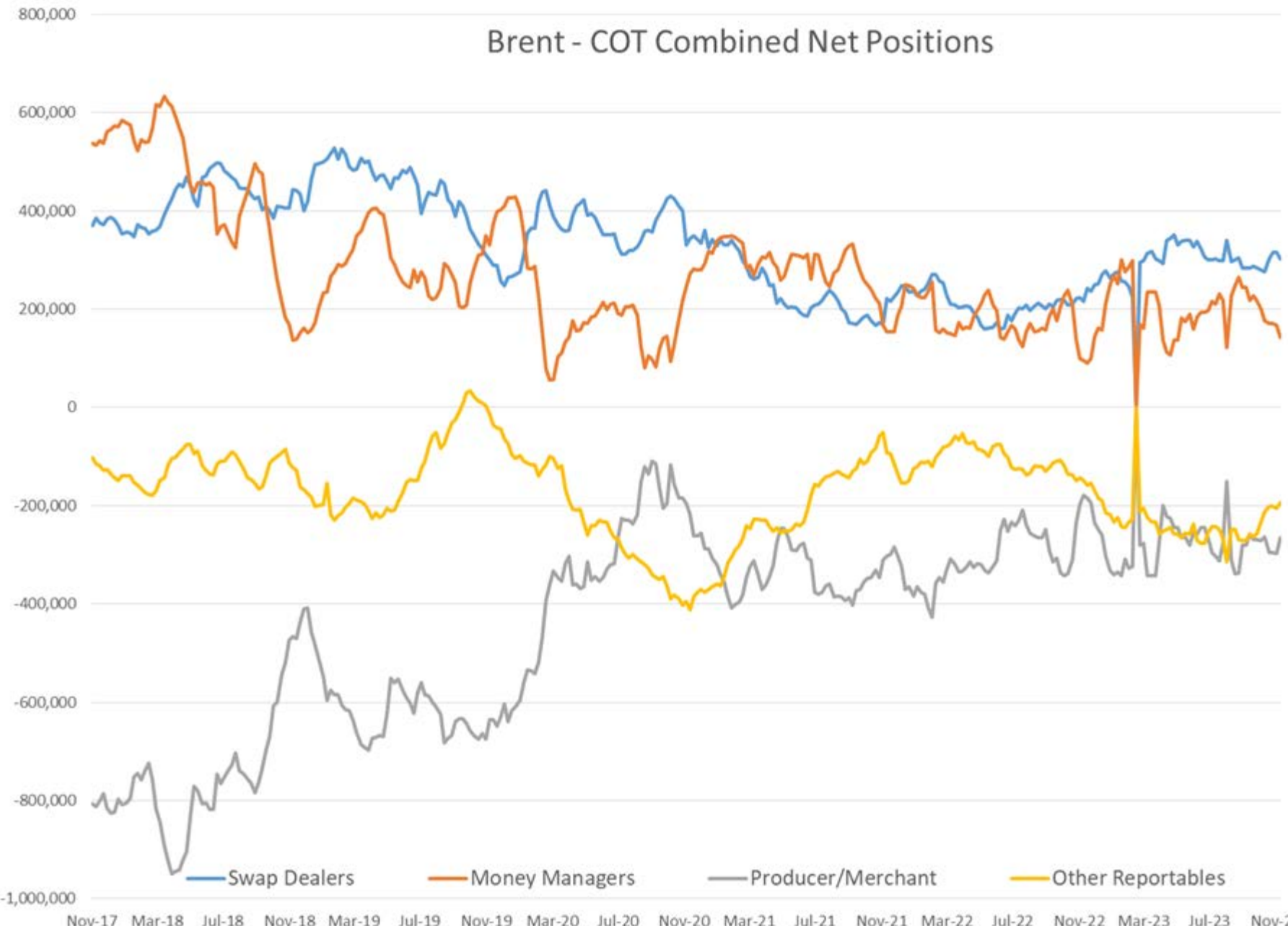
# COT Net Positions - RBOB combined



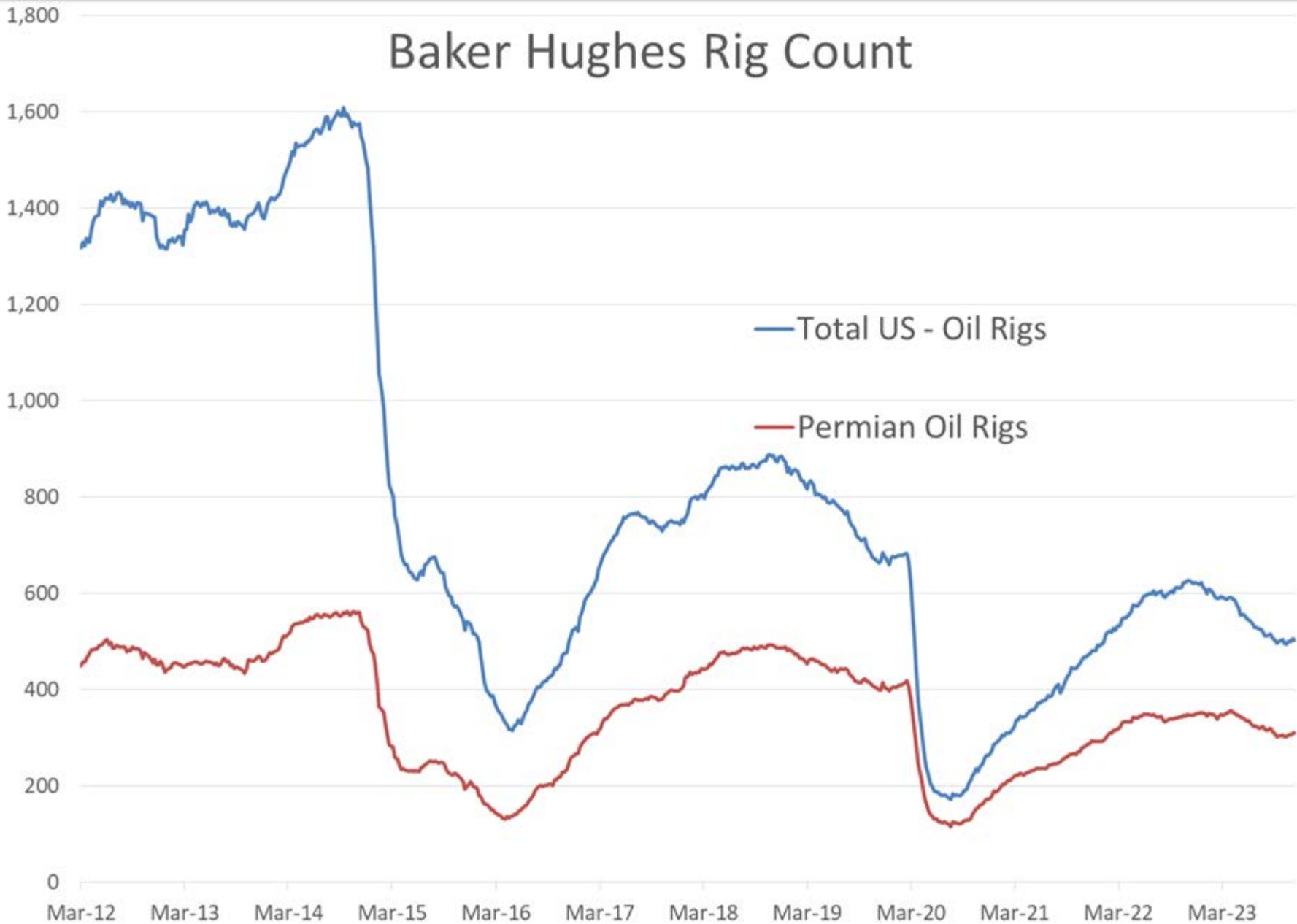
# COT Net Positions - ULSD(HO) Combined



# Brent - COT Combined Net Positions



# Baker Hughes Rig Count





# Baker Hughes - US Natural Gas Rig Count

