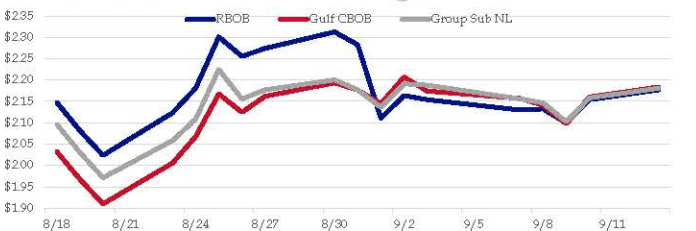


Gasoline

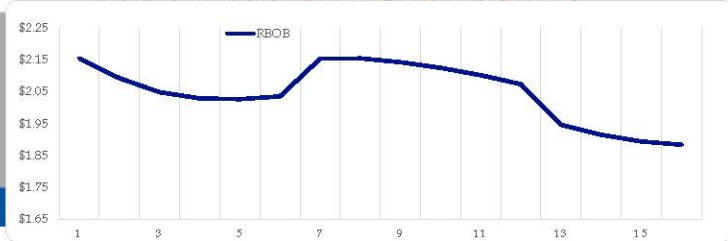
	RBOB	Change	Gulf CBOB	Change	Group Sub NL	Change	Gulf Basis	Group Basis	LA Basis
9/13	\$2.1769	\$0.0229	\$2.1838	\$0.0234	\$2.1810	\$0.0230	\$ 0.0064	\$ 0.0038	\$ 0.0010
9/10	\$2.1540	\$0.0543	\$2.1604	\$0.0627	\$2.1580	\$0.0555	\$ (0.0020)	\$ 0.0040	\$ 0.0005
9/9	\$2.0997	-\$0.0324	\$2.0977	-\$0.0433	\$2.1025	-\$0.0443	\$ (0.0028)	\$ 0.0028	\$ 0.0005
9/8	\$2.1321	\$0.0021	\$2.1410	-\$0.0164	\$2.1468	-\$0.0091	\$ 0.0089	\$ 0.0147	\$ 0.0655
9/7	\$2.1300	-\$0.0240	\$2.1573	-\$0.0166	\$2.1560	-\$0.0320	\$ 0.0273	\$ 0.0259	\$ 0.1355
9/3	\$2.1540	-\$0.0095	\$2.1738	-\$0.0333	\$2.1880	-\$0.0032	\$ 0.0198	\$ 0.0339	\$ 0.1505
9/2	\$2.1635	\$0.0526	\$2.2071	\$0.0626	\$2.1912	\$0.0551	\$ 0.0436	\$ 0.0277	\$ 0.1405
9/1	\$2.1109	-\$0.1717	\$2.1445	-\$0.0322	\$2.1361	-\$0.0410	\$ 0.0336	\$ 0.0252	\$ 0.1510

RBOB Technicals		
Indicator	Direction	Resistance
MACD	Neutral	3.1520 2014 High
Stochastics	Bullish	2.3526 2021 High
RSI	Neutral	2.0051 Aug Low
ADX	Bullish	1.8891 March Low
Momentum	Bullish	
Bias:	Bullish	

Gasoline History



Gasoline Forward Curve

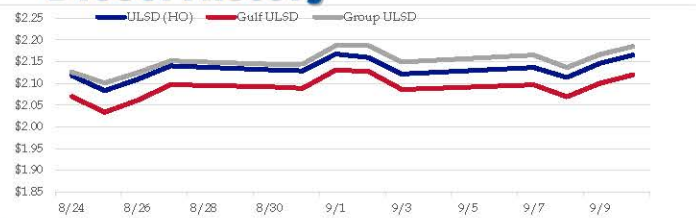


Diesel

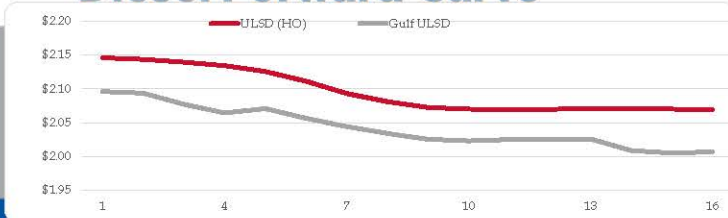
	ULSD (HO)	Change	Gulf ULSD	Change	Group ULSD	Change	Gulf Basis	Group Basis	LA Basis
9/13	\$2.1652	\$0.0192	\$2.1196	\$0.0193	\$2.1853	\$0.0189	\$ (0.0462)	\$ 0.0199	\$ 0.0355
9/10	\$2.1460	\$0.0323	\$2.1003	\$0.0310	\$2.1664	\$0.0298	\$ (0.0457)	\$ 0.0204	\$ 0.0345
9/9	\$2.1137	-\$0.0227	\$2.0693	-\$0.0274	\$2.1366	-\$0.0288	\$ (0.0444)	\$ 0.0229	\$ 0.0345
9/8	\$2.1364	\$0.0148	\$2.0967	\$0.0107	\$2.1654	\$0.0162	\$ (0.0397)	\$ 0.0290	\$ 0.0745
9/7	\$2.1216	-\$0.0378	\$2.0860	-\$0.0411	\$2.1492	-\$0.0374	\$ (0.0356)	\$ 0.0276	\$ 0.0795
9/3	\$2.1594	-\$0.0083	\$2.1272	-\$0.0037	\$2.1866	-\$0.0004	\$ (0.0323)	\$ 0.0272	\$ 0.0795
9/2	\$2.1677	\$0.0388	\$2.1308	\$0.0423	\$2.1870	\$0.0425	\$ (0.0369)	\$ 0.0193	\$ 0.0895
9/1	\$2.1289	-\$0.0021	\$2.0885	-\$0.0035	\$2.1444	\$0.0002			

HO Technicals		
Indicator	Direction	Resistance
MACD	Overbought	2.4500 2018 High
Stochastics	Bullish	2.2101 2021 High
RSI	Neutral	1.9553 June Low
ADX	Bearish	1.7295 March Low
Momentum	Bullish	
Bias:	Neutral	

Diesel History



Diesel Forward Curve



Crude

	WTI	Change	Brent	Change
9/13	\$70.51	\$0.79	\$73.42	\$0.50
9/10	\$69.72	\$1.58	\$72.92	\$1.47
9/9	\$68.14	-\$1.16	\$71.45	-\$1.15
9/8	\$69.30	\$0.95	\$72.60	\$0.91
9/7	\$68.35	-\$0.94	\$71.69	-\$0.53
Line 1		Change	Line 2	Change
CPL space	-0.0058	-\$0.0020	-\$0.0060	-\$0.0003

Refinery Margins

Vs WTI					Vs Brent					Group / WCS
	Gulf Gas	Gulf Diesel	3/2/1	5/3/2	Gulf Gas	Gulf Diesel	3/2/1	5/3/2	3/2/1	
9/13	\$21.01	\$18.49	\$20.17	\$20.01	\$17.81	\$15.29	\$16.97	\$16.81	22.61	
9/10	\$19.96	\$18.77	\$19.57	\$19.49	\$16.65	\$15.46	\$16.26	\$16.18	20.64	
9/9	\$20.62	\$18.76	\$20.00	\$19.88	\$17.32	\$15.46	\$16.70	\$16.58	21.13	
9/7	\$22.26	\$19.26	\$21.26	\$21.06	\$18.92	\$15.92	\$17.92	\$17.72	22.11	

Economic Indicators

Commodity Futures

	Settle	Change		Settle	Change
S&P 500 Futures	4,228	25.50	NatGas	5.031	-0.093
DJIA	34,608		Gold	1,790	-0.2
EUR/USD	1.1815	-0.0044	Silver	23.86	-0.3
USD Index	92.59	0.26	Copper	4.45	-0.038
US 10 YR YIELD	1.35%	0.05	FCOJ	140.10	0.90
US 2 YR YIELD	0.23%	0.00	Wheat	675.00	
Oil Volatility Index	33.87	-0.33	Butane	1.421	0.007
S&P Volatility Index (VIX)	18.80	2.15	Propane	1.202	0.012
Nikkei 225 Index	29,970	420.00	Bitcoin	45,675	-700

RINs and Price Drivers

Current Year Biodiesel RINs			Current Year Ethanol RINs		
	Settle	Net Change		Settle	Net Change
	1.5125	-0.050		1.3025	-0.048
Price Drivers			Price Drivers		
Soybeans	1275.25		Ethanol	2.37	0.020
Soybean Oil	55.74		Com	502.75	0.250
BOHO Spread	2.035		Com Crush	0.574	
Soy Crush	607.91		RVO Estimate		
			Per Gallon	\$ 0.1620	\$ (0.0050)
			Per Barrel	\$ 6.80	\$ (0.21)

*SOURCES: Nymex, CBOT, NYSE, ICE, NASDAQ, CME Group, CBOE. Prices delayed.

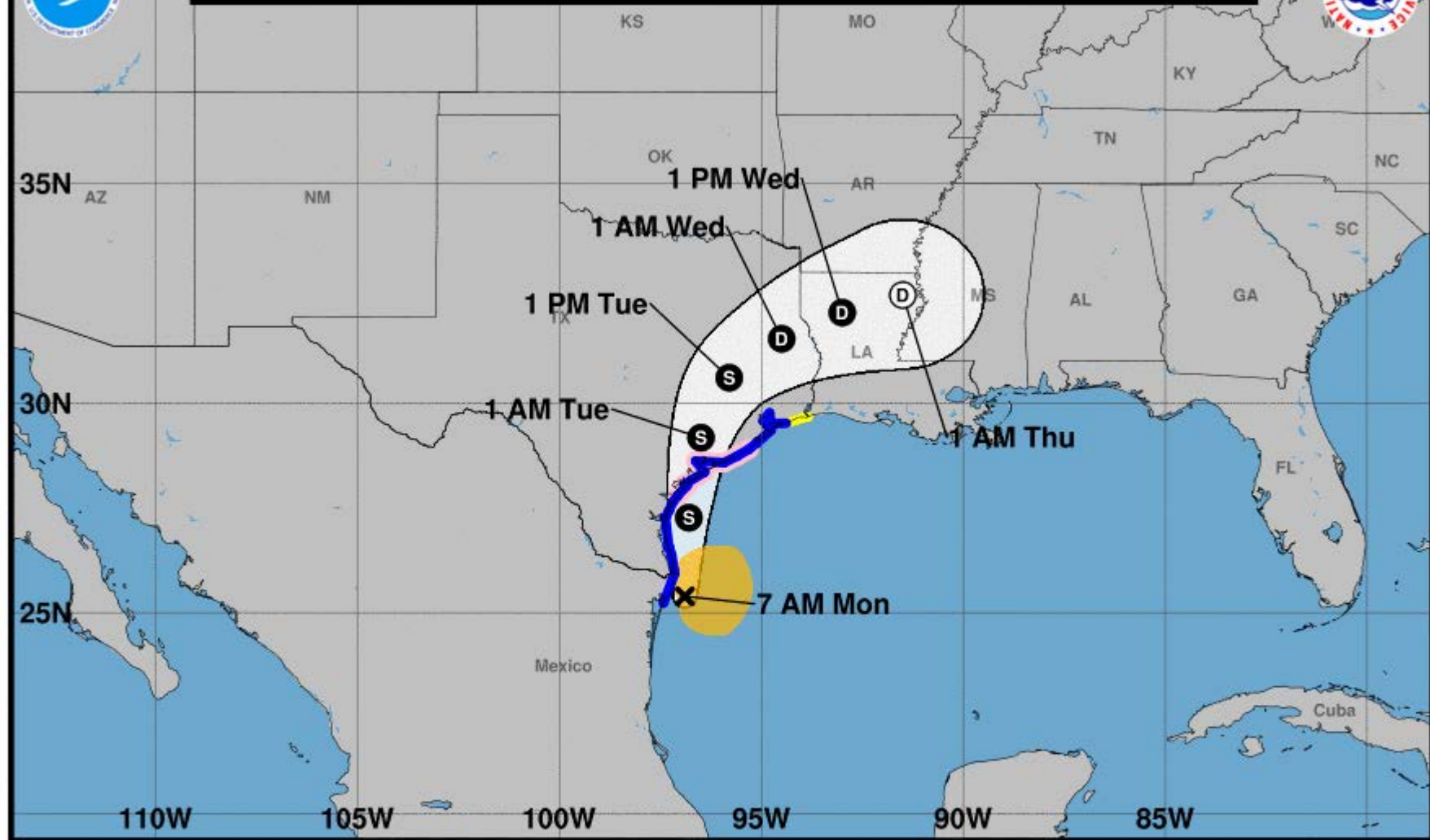
Rotary Rig Count

9/10/21

Location	Week	+/-	Week Ago
Land	497	2	495
Inland Waters	0	0	0
Offshore	6	4	2
United States Total	503	6	497
Gulf Of Mexico	4	4	0
Canada	143	-9	152
North America	646	-3	649



Note: The cone contains the probable path of the storm center but does not show the size of the storm. Hazardous conditions can occur outside of the cone.



Tropical Storm Nicholas
 Monday September 13, 2021
 7 AM CDT Intermediate Advisory 5A
 NWS National Hurricane Center

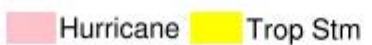
Current information: x
 Center location 25.4 N 96.9 W
 Maximum sustained wind 60 mph
 Movement NNW at 5 mph

Forecast positions:
 ● Tropical Cyclone ○ Post/Potential TC
 Sustained winds: D < 39 mph
 S 39-73 mph H 74-110 mph M > 110 mph

Potential track area:



Watches:



Warnings:



Current wind extent:

