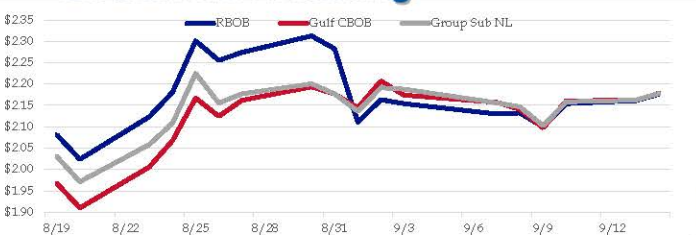


Gasoline

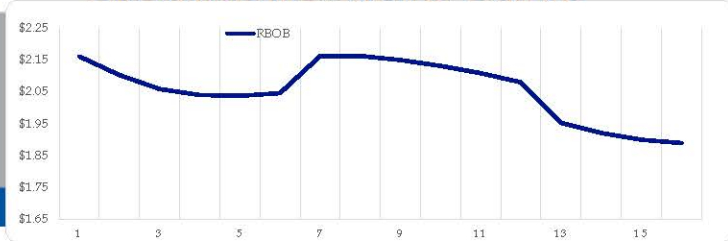
	RBOB	Change	Gulf CBOB	Change	Group Sub NL	Change	Gulf Basis	Group Basis	LA Basis
9/14	\$2.1762	\$0.0153	\$2.1781	\$0.0158	\$2.1778	\$0.0154	\$ 0.0014	\$ 0.0013	\$ 0.0010
9/13	\$2.1609	\$0.0069	\$2.1623	\$0.0015	\$2.1624	\$0.0041	\$ 0.0014	\$ 0.0015	\$ 0.0005
9/10	\$2.1540	\$0.0543	\$2.1608	\$0.0635	\$2.1583	\$0.0561	\$ 0.0068	\$ 0.0043	\$ 0.0005
9/9	\$2.0997	-\$0.0324	\$2.0973	-\$0.0433	\$2.1022	-\$0.0446	\$ (0.0024)	\$ 0.0025	\$ 0.0005
9/8	\$2.1321	\$0.0021	\$2.1407	-\$0.0167	\$2.1468	-\$0.0091	\$ 0.0086	\$ 0.0147	\$ 0.0655
9/7	\$2.1300	-\$0.0240	\$2.1573	-\$0.0165	\$2.1560	-\$0.0320	\$ 0.0273	\$ 0.0259	\$ 0.1355
9/3	\$2.1540	-\$0.0095	\$2.1738	-\$0.0333	\$2.1880	-\$0.0032	\$ 0.0198	\$ 0.0339	\$ 0.1505
9/2	\$2.1635	\$0.0526	\$2.2071	\$0.0626	\$2.1912	\$0.0551	\$ 0.0436	\$ 0.0277	\$ 0.1410

RBOB Technicals		
Indicator	Direction	Resistance
MACD	Neutral	3.1520 2014 High
Stochastics	Bullish	2.3526 2021 High
RSI	Neutral	2.0051 Aug Low
ADX	Bullish	1.8891 March Low
Momentum	Bullish	
Bias:	Bullish	

Gasoline History



Gasoline Forward Curve

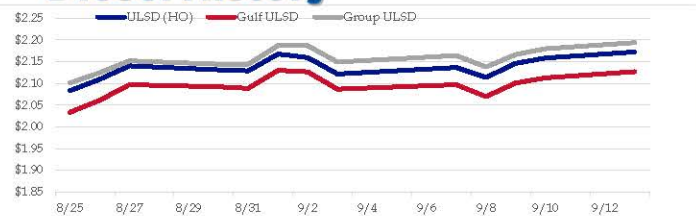


Diesel

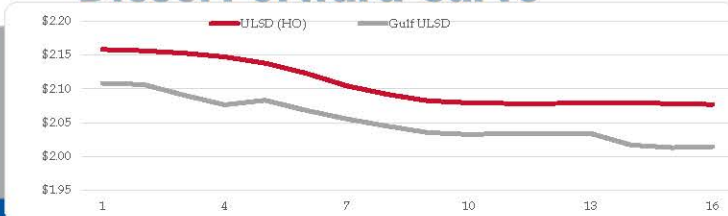
	ULSD (HO)	Change	Gulf ULSD	Change	Group ULSD	Change	Gulf Basis	Group Basis	LA Basis
9/14	\$2.1724	\$0.0141	\$2.1268	\$0.0142	\$2.1938	\$0.0138	\$ (0.0462)	\$ 0.0211	\$ 0.0355
9/13	\$2.1583	\$0.0123	\$2.1126	\$0.0118	\$2.1800	\$0.0136	\$ (0.0457)	\$ 0.0216	\$ 0.0345
9/10	\$2.1460	\$0.0323	\$2.1008	\$0.0313	\$2.1664	\$0.0287	\$ (0.0452)	\$ 0.0204	\$ 0.0345
9/9	\$2.1137	-\$0.0227	\$2.0695	-\$0.0276	\$2.1377	-\$0.0263	\$ (0.0442)	\$ 0.0240	\$ 0.0345
9/8	\$2.1364	\$0.0148	\$2.0971	\$0.0105	\$2.1640	\$0.0147	\$ (0.0393)	\$ 0.0276	\$ 0.0745
9/7	\$2.1216	-\$0.0378	\$2.0866	-\$0.0401	\$2.1493	-\$0.0376	\$ (0.0350)	\$ 0.0277	\$ 0.0795
9/3	\$2.1594	-\$0.0083	\$2.1268	-\$0.0033	\$2.1869	\$0.0000	\$ (0.0327)	\$ 0.0275	\$ 0.0795
9/2	\$2.1677	\$0.0388	\$2.1300	\$0.0416	\$2.1870	\$0.0427			

HO Technicals		
Indicator	Direction	Resistance
MACD	Overbought	2.4500 2018 High
Stochastics	Bullish	2.2101 2021 High
RSI	Neutral	1.9553 June Low
ADX	Bearish	1.7295 March Low
Momentum	Bullish	
Bias:	Neutral	

Diesel History



Diesel Forward Curve



Crude

	WTI	Change	Brent	Change
9/14	\$71.05	\$0.60	\$73.83	\$0.32
9/13	\$70.45	\$0.73	\$73.51	\$0.59
9/10	\$69.72	\$1.58	\$72.92	\$1.47
9/9	\$68.14	-\$1.16	\$71.45	-\$1.15
9/8	\$69.30	\$0.95	\$72.60	\$0.91
Line 1	Change	Line 2	Change	
CPL space	-0.0058	-\$0.0020	-\$0.0045	\$0.0012

Refinery Margins

				Vs WTI				Vs Brent				Group / WCS
				Gulf Gas	Gulf Diesel	3/2/1	5/3/2	Gulf Gas	Gulf Diesel	3/2/1	5/3/2	3/2/1
9/14	\$71.05	\$0.60	\$73.83	\$20.36	\$18.28	\$19.67	\$19.53	\$17.30	\$15.22	\$16.61	\$16.47	21.35
9/13	\$70.45	\$0.73	\$73.51	\$21.03	\$18.51	\$20.19	\$20.02	\$17.83	\$15.31	\$16.99	\$16.82	21.04
9/10	\$69.72	\$1.58	\$72.92	\$19.95	\$18.78	\$19.56	\$19.48	\$16.64	\$15.47	\$16.25	\$16.17	20.65
9/9	\$68.14	-\$1.16	\$71.45	\$20.61	\$18.78	\$20.00	\$19.87	\$17.31	\$15.48	\$16.70	\$16.57	21.11

Economic Indicators

Commodity Futures

	Settle	Change		Settle	Change
S&P 500 Futures	4,200	-3.00	NatGas	4.938	0.293
DJIA	34,608	261.91	Gold	1,792	-9.0
EUR/USD	1.1812	0.0004	Silver	23.75	
USD Index	92.65	-0.05	Copper	4.36	-0.062
US 10 YR YIELD	1.33%	-0.02	FCOJ	142.10	0.50
US 2 YR YIELD	0.21%	-0.02	Wheat	674.50	2.75
Oil Volatility Index	33.54	-0.80	Butane	1.427	-0.004
S&P Volatility Index (VIX)	20.95	-1.58	Propane	1.214	0.007
Nikkei 225 Index	30,465	-130.00	Bitcoin	44,815	1,065

RINs and Price Drivers

Current Year Biodiesel RINs			Current Year Ethanol RINs		
	Settle	Net Change		Settle	Net Change
	1.4750	-0.037	Ethanol	1.2600	-0.043
Price Drivers			Price Drivers		
Soybeans	1272.50		Ethanol	2.37	0.020
Soybean Oil	55.80		Com	496.75	0.250
BOHO Spread	2.027		Com Crush	0.596	
Soy Crush	608.66		RVO Estimate		
			Per Gallon	\$ 0.1570	\$ (0.0050)
			Per Barrel	\$ 6.59	\$ (0.21)

*SOURCES: Nymex, CBOT, NYSE, ICE, NASDAQ, CME Group, CBOE. Prices delayed.



Disturbances: ALL (1) (2)



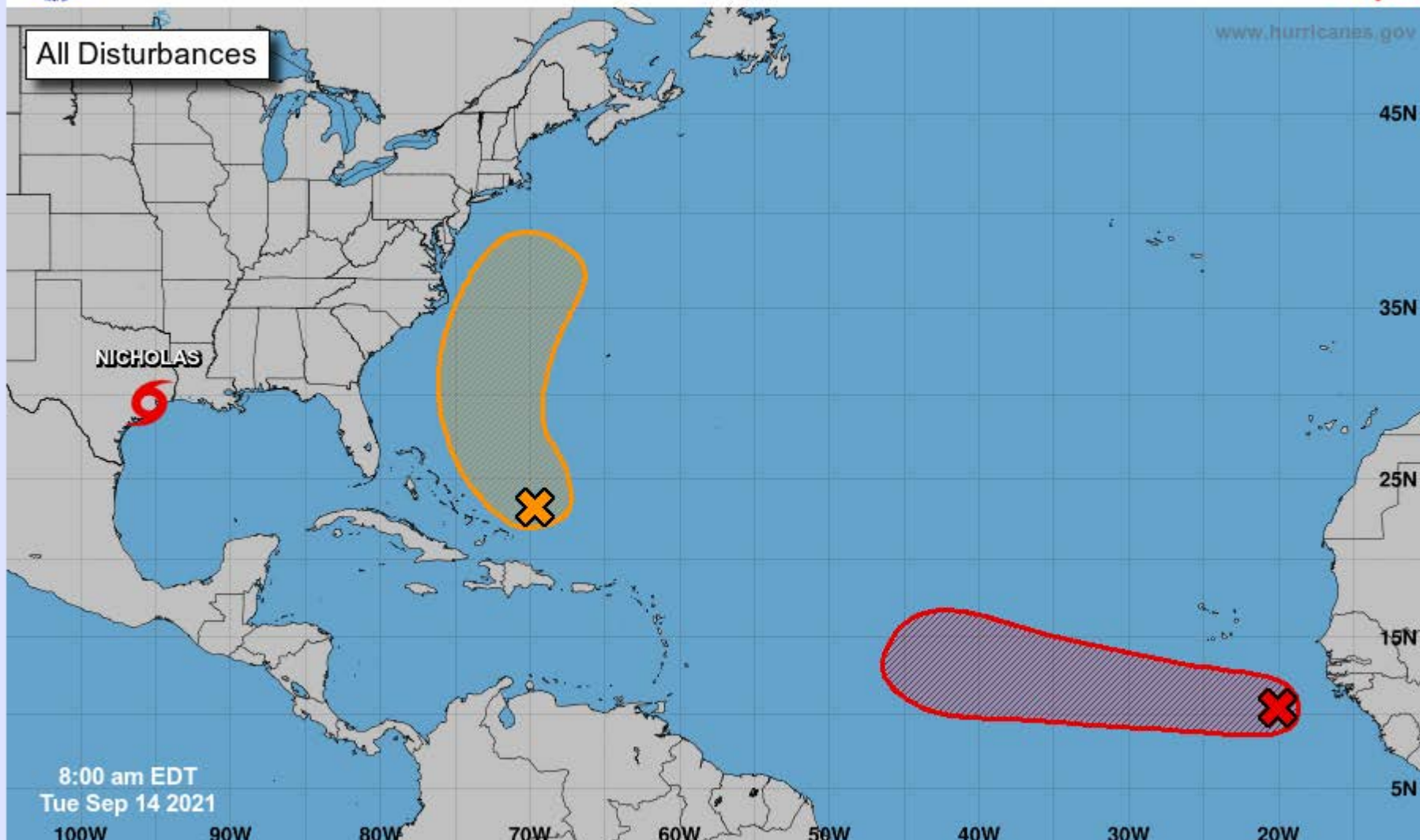
Five-Day Graphical Tropical Weather Outlook

National Hurricane Center Miami, Florida



www.hurricanes.gov

All Disturbances



8:00 am EDT
Tue Sep 14 2021

100W 90W 80W 70W 60W 50W 40W 30W 20W

Current Disturbances and Five-Day Cyclone Formation Chance:
X < 40% X 40-60% X > 60%
 Tropical or Sub-Tropical Cyclone: ○ Depression ◐ Storm ◑ Hurricane
⊗ Post-Tropical Cyclone or Remnants

[View 2-Day Graphical Tropical Weather Outlook](#)

Refineries At Risk

Region	Refinery Name	Name Plate Capacity (MB/DAY)	STATE	Owner
Lake Charles	Citgo Lake Charles	440	LA	Citgo
Lake Charles	P66 Westlake	273	LA	P66
Lake Charles	Calcasieu	105	LA	Transworld Refining
Baton Rouge	Alon Krotz Springs	83	LA	Alon
Baton Rouge	Placid Pt Allen	83	LA	Placid
Baton Rouge	Exxon Baton Rouge	523	LA	Exxon
Corpus Christi Area:	Flint Hills Corpus Christi	304	TX	Flint Hills
Corpus Christi Area:	Valero Corpurs Christi	300	TX	Valero
Corpus Christi Area:	Citgo Corpus Christi	163	TX	Citgo
Corpus Christi Area:	Valero Three Rivers	91	TX	Valero
Houston/Pasadena Area	Houston Refining	296	TX	Houston Refining
Houston/Pasadena Area	Exxon Baytown	296	TX	Exxon
Houston/Pasadena Area	Valero	197	TX	Valero
Houston/Pasadena Area	Pasadena Refining	115	TX	Pasadena Refining
Houston/Pasadena Area	P66 Sweeny	260	TX	P66
Houston/Pasadena Area	Deer Park	340	TX	Deer Park Refining
Galveston Area	Valero Texas City	133	TX	Valero
Galveston Area	Marathon Texas City	89	TX	Marathon
Galveston Area	Marathon Galveston Bay	481	TX	Marathon
Pt Arthur/Beaumont	Motiva Pt Arthur	635	TX	Motiva
Pt Arthur/Beaumont	Exxon Beaumont	377	TX	Exxon
Pt Arthur/Beaumont	Total Pt Arthur	245	TX	Total
Pt Arthur/Beaumont	Valero Pt Arthur	415	TX	Valero