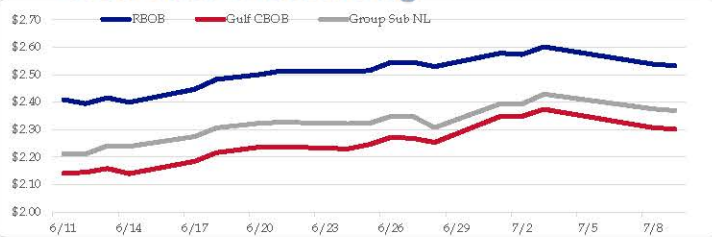


### Gasoline

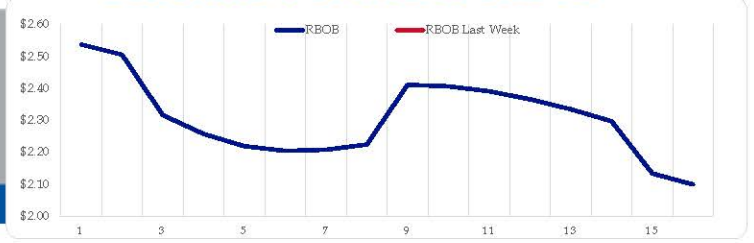
	RBOB	Change	Gulf CBOB	Change	Group Sub NL	Change	Gulf Basis	Group Basis	LA Basis
7/9	\$2.5328	<b>-\$0.0051</b>	\$2.3020	<b>-\$0.0048</b>	\$2.3692	<b>-\$0.0056</b>	\$ (0.2314)	\$ (0.1639)	\$ (0.0505)
7/8	\$2.5379	<b>-\$0.0634</b>	\$2.3068	<b>-\$0.0673</b>	\$2.3748	<b>-\$0.0542</b>	\$ (0.2312)	\$ (0.1631)	\$ (0.0490)
7/3	\$2.6013	<b>\$0.0279</b>	\$2.3740	<b>\$0.0253</b>	\$2.4290	<b>\$0.0360</b>	\$ (0.2273)	\$ (0.1723)	\$ (0.0490)
7/2	\$2.5734	<b>-\$0.0049</b>	\$2.3487	<b>\$0.0006</b>	\$2.3930	<b>-\$0.0006</b>	\$ (0.2247)	\$ (0.1804)	\$ (0.0440)
7/1	\$2.5783	<b>\$0.0492</b>	\$2.3481	<b>\$0.0946</b>	\$2.3936	<b>\$0.0866</b>	\$ (0.2302)	\$ (0.1847)	\$ (0.0405)
6/28	\$2.5291	<b>-\$0.0165</b>	\$2.2535	<b>-\$0.0141</b>	\$2.3070	<b>-\$0.0400</b>	\$ (0.2756)	\$ (0.2221)	\$ (0.0679)
6/27	\$2.5456	<b>\$0.0010</b>	\$2.2676	<b>-\$0.0042</b>	\$2.3471	<b>-\$0.0015</b>	\$ (0.2781)	\$ (0.1986)	\$ (0.0642)
6/26	\$2.5446	<b>\$0.0299</b>	\$2.2718	<b>\$0.0267</b>	\$2.3486	<b>\$0.0261</b>	\$ (0.2728)	\$ (0.1961)	\$ (0.0233)

RBOB Technicals		
Indicator	Direction	Resistance
MACD	Neutral	2.9859 Sep High
Stochastics	Bearish	2.8516 2024 High
RSI	Neutral	2.2985 June Low
ADX	Bullish Trend	2.1365 February Low
Momentum	Bullish	
Bias:	Neutral	

### Gasoline History



### Gasoline Forward Curve

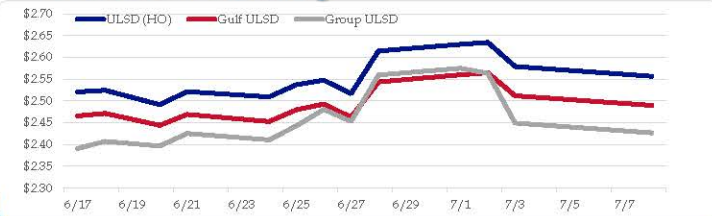


### Diesel

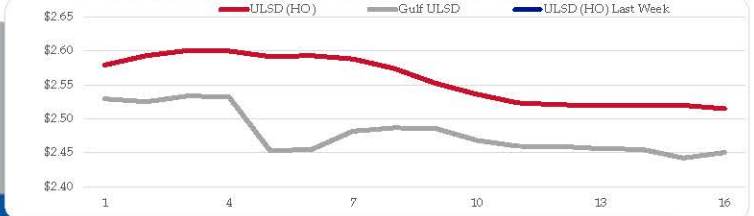
	ULSD (HO)	Change	Gulf ULSD	Change	Group ULSD	Change	Gulf Basis	Group Basis	LA Basis
7/9	\$2.5587	<b>-\$0.0224</b>	\$2.4900	<b>-\$0.0224</b>	\$2.4267	<b>-\$0.0228</b>	\$ (0.0677)	\$ (0.1302)	\$ 0.0305
7/8	\$2.5791	<b>-\$0.0552</b>	\$2.5119	<b>-\$0.0527</b>	\$2.4495	<b>-\$0.1140</b>	\$ (0.0672)	\$ (0.1296)	\$ 0.0295
7/3	\$2.6343	<b>\$0.0046</b>	\$2.5646	<b>\$0.0044</b>	\$2.5635	<b>-\$0.0115</b>	\$ (0.0697)	\$ (0.0709)	\$ 0.0295
7/2	\$2.6297	<b>\$0.0150</b>	\$2.5602	<b>\$0.0166</b>	\$2.5750	<b>\$0.0151</b>	\$ (0.0695)	\$ (0.0548)	\$ 0.0295
7/1	\$2.6147	<b>\$0.0978</b>	\$2.5436	<b>\$0.0810</b>	\$2.5598	<b>\$0.1065</b>	\$ (0.0711)	\$ (0.0549)	\$ 0.0295
6/28	\$2.5169	<b>-\$0.0307</b>	\$2.4626	<b>-\$0.0301</b>	\$2.4533	<b>-\$0.0273</b>	\$ (0.0543)	\$ (0.0636)	\$ 0.0457
6/27	\$2.5476	<b>\$0.0101</b>	\$2.4928	<b>\$0.0127</b>	\$2.4806	<b>\$0.0376</b>	\$ (0.0549)	\$ (0.0670)	\$ 0.0098
6/26	\$2.5375	<b>\$0.0281</b>	\$2.4801	<b>\$0.0271</b>	\$2.4430	<b>\$0.0320</b>			

HO Technicals		
Indicator	Direction	Resistance
MACD	Neutral	3.0476 Nov High
Stochastics	Bearish	2.9735 Feb High
RSI	Neutral	2.2566 June Low
ADX	Bullish	2.1500 April 2023 Low
Momentum	Neutral	
Bias:	Neutral	

### Diesel History



### Diesel Forward Curve



### Crude

	WTI	Change	Brent	Change
7/9	\$81.92	<b>-\$0.41</b>	\$85.52	<b>-\$0.23</b>
7/8	\$82.33	<b>-\$0.83</b>	\$85.75	<b>-\$0.79</b>
7/5	\$83.16	<b>-\$0.72</b>	\$86.54	<b>-\$0.80</b>
7/3	\$83.88	<b>\$1.07</b>	\$87.34	<b>\$1.10</b>
7/2	\$82.81	<b>-\$0.57</b>	\$86.24	<b>-\$0.17</b>
CPL space	Line 1 0.0775	Change <b>\$0.0075</b>	Line 2 -0.0093	Change <b>\$0.0015</b>

### Refinery Margins

Vs WTI				Vs Brent				Group / WCS	
	Gulf Gas	Gulf Diesel	3/2/1	5/3/2	Gulf Gas	Gulf Diesel	3/2/1	5/3/2	3/2/1
7/9	\$14.55	\$23.17	\$17.43	\$18.00	\$11.13	\$19.75	\$14.01	\$14.58	\$ 29.63
7/8	\$16.55	\$24.55	\$19.22	\$19.75	\$13.17	\$21.17	\$15.84	\$16.37	\$ 32.74
7/5	\$14.77	\$23.65	\$17.73	\$18.32	\$11.31	\$20.19	\$14.27	\$14.86	\$ 31.17
7/3	\$15.81	\$24.02	\$18.55	\$19.09	\$12.38	\$20.59	\$15.12	\$15.66	\$ 32.05
7/2	\$11.27	\$20.05	\$14.19	\$14.78	\$8.24	\$17.02	\$11.16	\$11.75	\$ 27.56

### Economic Indicators

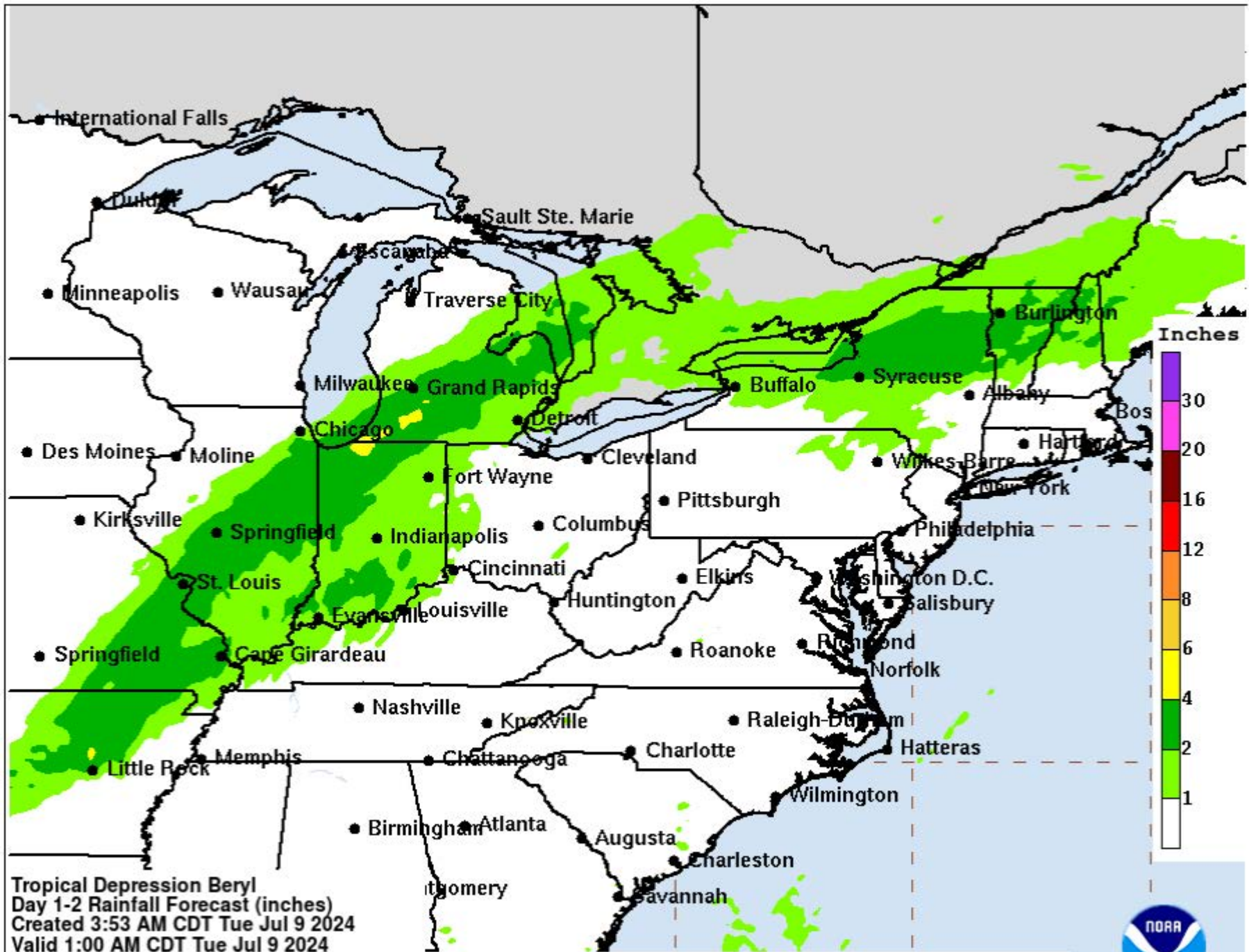
### Commodity Futures

	Settle	Change		Settle	Change
S&P 500 Futures	5,637	<b>11.50</b>	US NatGas	2.319	<b>0.047</b>
DJIA	39,345		TTF NatGas	10.28	<b>-0.2</b>
Nasdaq 100	20,440	<b>47.57</b>	Gold	2,355	<b>8.5</b>
EUR/USD	1.0829	<b>-0.0013</b>	Silver	30.62	<b>27.6</b>
USD Index	104.67	<b>0.11</b>	Copper	460.05	<b>1.3</b>
US 10 YR YIELD	4.28%	<b>0.00</b>	FCOJ	1174.25	<b>0.196</b>
US 2 YR YIELD	4.62%	<b>0.02</b>	Wheat	553.00	
Oil Volatility Index (OVX)	23.78	<b>0.03</b>	Butane	0.999	<b>-0.006</b>
S&P Volatility Index (VIX)	18.00	<b>0.71</b>	Propane	0.834	<b>-0.012</b>
Nikkei 225 Index	40,955	<b>630.00</b>	Feeder Cattle	259.2	
			Bitcoin	56,755	<b>905</b>

### RINs and Price Drivers

Current Year Bio RINs (D4)			Current Year Ethanol RINs (D6)		
	Settle	Net Change		Settle	Net Change
	0.6620	<b>0.015</b>		0.6610	<b>0.019</b>
Price Drivers			Price Drivers		
Soybeans	Settle	Net Change	Ethanol	Settle	Net Change
	1174.25			1.97	<b>0.030</b>
Soybean Oil	49.00	<b>-0.400</b>	Com	395.75	
BOHO Spread	1.096		Com Crush	0.554	
Soy Crush	535.61		RVO Estimate		
			Per Gallon	\$ 0.0860	\$ <b>0.0020</b>
			Per Barrel	\$ 3.61	\$ <b>0.08</b>

\*SOURCES: Nymex, CBOT, NYSE, ICE, NASDAQ, CME Group, CBOE. Prices delayed.



**Tropical Depression Beryl**  
 Day 1-2 Rainfall Forecast (inches)  
 Created 3:53 AM CDT Tue Jul 9 2024  
 Valid 1:00 AM CDT Tue Jul 9 2024  
 through 7:00 AM CDT Thu Jul 11 2024  
 DOC/NOAA/NWS/NCEP/WPC

Local point maximum rainfall may be higher than shown.  
 See the WPC public advisories for the latest tropical cyclone information.







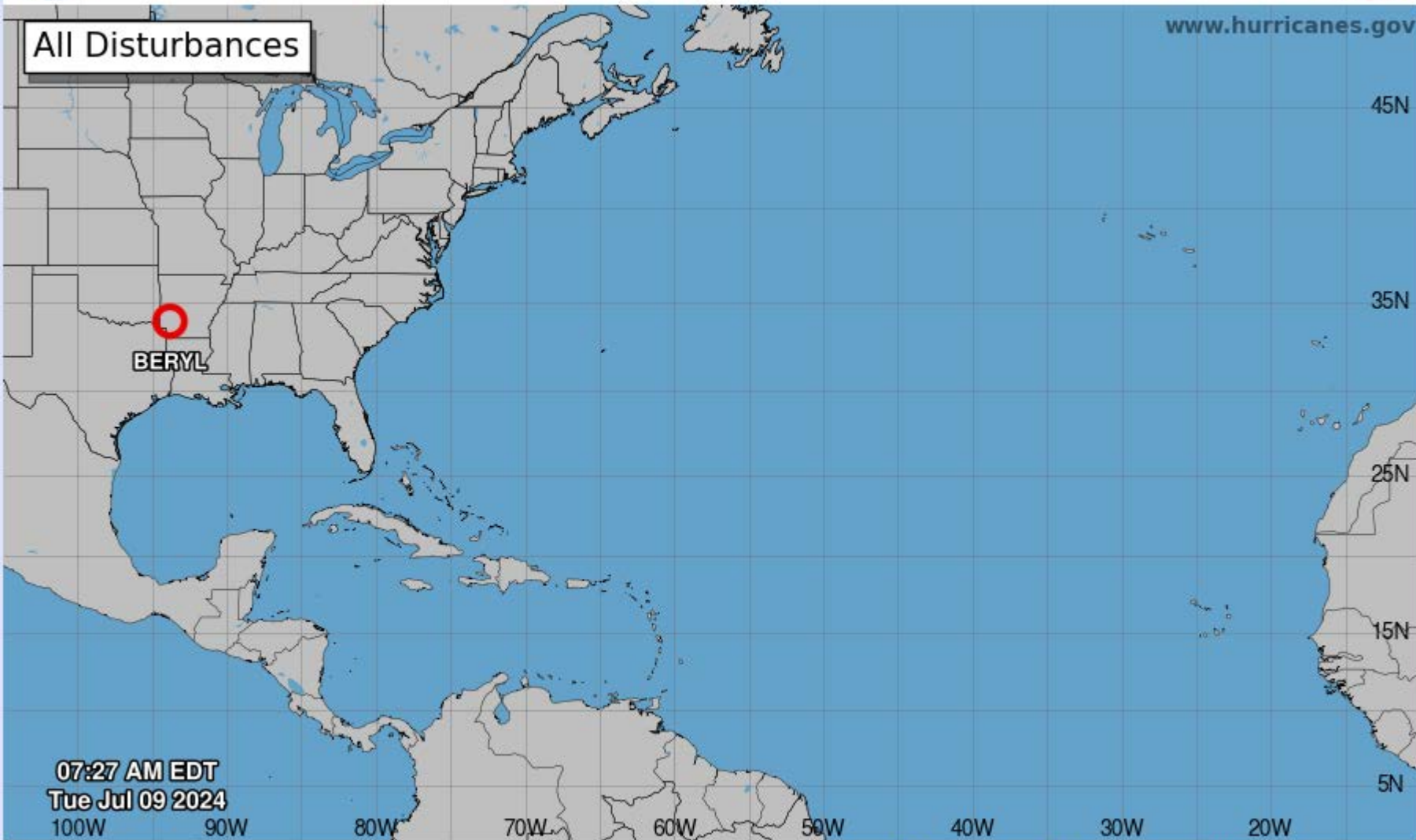
# Seven-Day Graphical Tropical Weather Outlook

National Hurricane Center Miami, Florida



All Disturbances

www.hurricanes.gov



07:27 AM EDT  
Tue Jul 09 2024

Current Disturbances and Seven-Day Cyclone Formation Chance: < 40% 40-60% > 60%

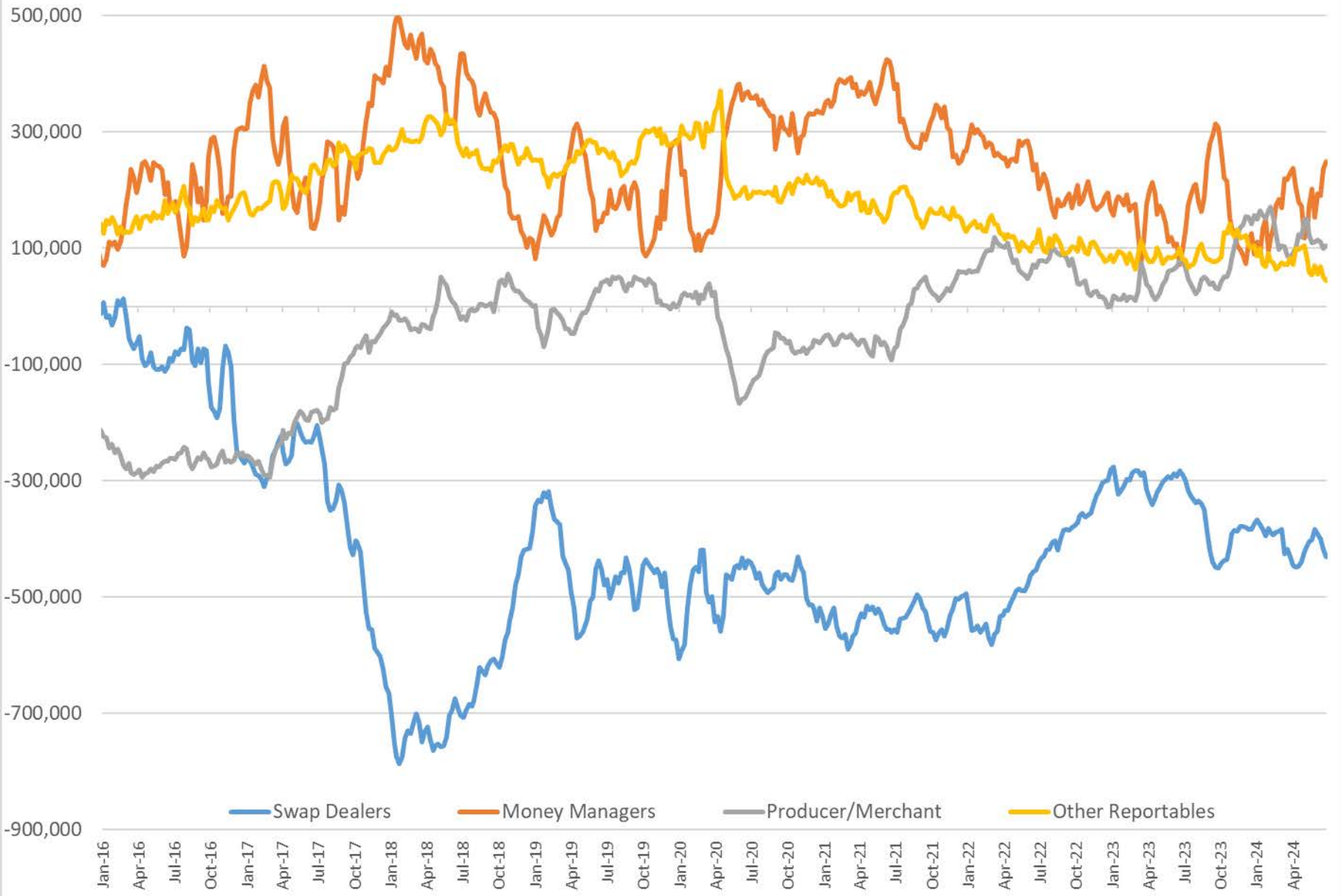
Tropical or Sub-Tropical Cyclone: Depression Storm Hurricane

Post-Tropical Cyclone or Remnants

## Commitment of Traders Report - Money Manager Recap

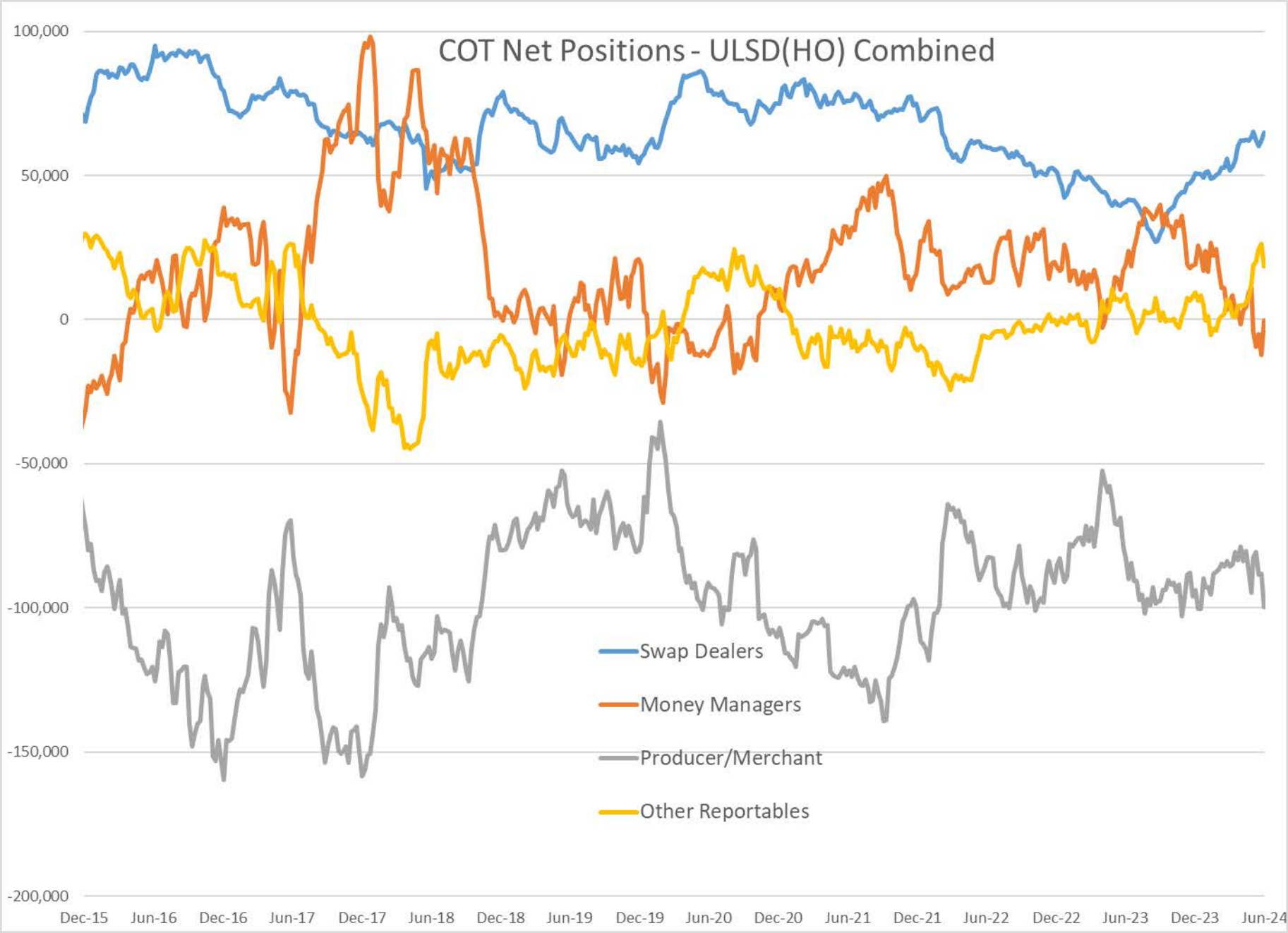
Date of compilation	HO Managed				WTI Managed				RBOB Managed				Brent Managed				LS Gasoil Managed			
	Long Positions	Short Positions	HO Open Interest	Net Position	Long Positions	Short Positions	WTI Open Interest	Net Position	Long Positions	Short Positions	RBOB Open Interest	Net Position	Long Positions	Short Positions	Brent Open Interest	Net Position	Long Positions	Short Positions	LS Gasoil Open Interest	Net Position
7/3/2024	26,553	26,929	374,093	(376)	276,455	27,374	2,181,312	249,081	67,958	36,729	403,312	31,229	289,743	93,932	3,081,444	195,811	118,018	22,771	1,019,551	95,247
6/25/2024	22,090	34,292	379,150	(12,202)	267,671	31,855	2,087,266	235,816	65,711	31,636	379,577	34,075	257,560	99,189	3,048,184	158,371	112,920	13,516	1,012,200	99,404
1 Week % Change	4,463 20.2%	(7,363) -21.5%	(5,057) -1.3%	11,826 96.9%	8,784 3.3%	(4,481) -14.1%	94,046 4.5%	13,265 5.6%	2,247 3.4%	5,093 16.1%	23,735 6.3%	(2,846) -8.4%	32,183 12.5%	(5,257) -5.3%	33,260 1.1%	37,440 23.6%	5,098 4.5%	9,255 68.5%	7,351 0.7%	(4,157) -4.2%
1 Year % Change	(14,040) -35%	5,320 25%	65,701 21%	(19,360) -102%	68,937 33%	(84,781) -76%	(68,503) -3%	153,718 161%	3,558 6%	18,071 97%	82,093 26%	(14,513) -32%	45,229 18%	34,324 58%	351,358 13%	10,905 6%	69,028 141%	(16,207) -42%	290,930 40%	85,235 851%
6/14/2024	25,083	30,250	390,999	(5,167)	231,168	40,503	2,062,026	190,665	61,944	34,772	398,182	27,172	209,063	137,377	3,074,005	71,686	73,552	31,645	904,582	41,907
6/30/2023	40,593	21,609	308,392	18,984	207,518	112,155	2,249,815	95,363	64,400	18,658	321,219	45,742	244,514	59,608	2,730,086	184,906	48,990	38,978	728,621	10,012
6/23/2023	38,073	21,253	299,076	16,820	207,303	135,760	2,302,342	71,543	61,017	12,418	332,485	48,599	227,633	67,833	2,834,295	159,800	49,045	33,257	733,781	15,788

# COT Net Positions - WTI combined

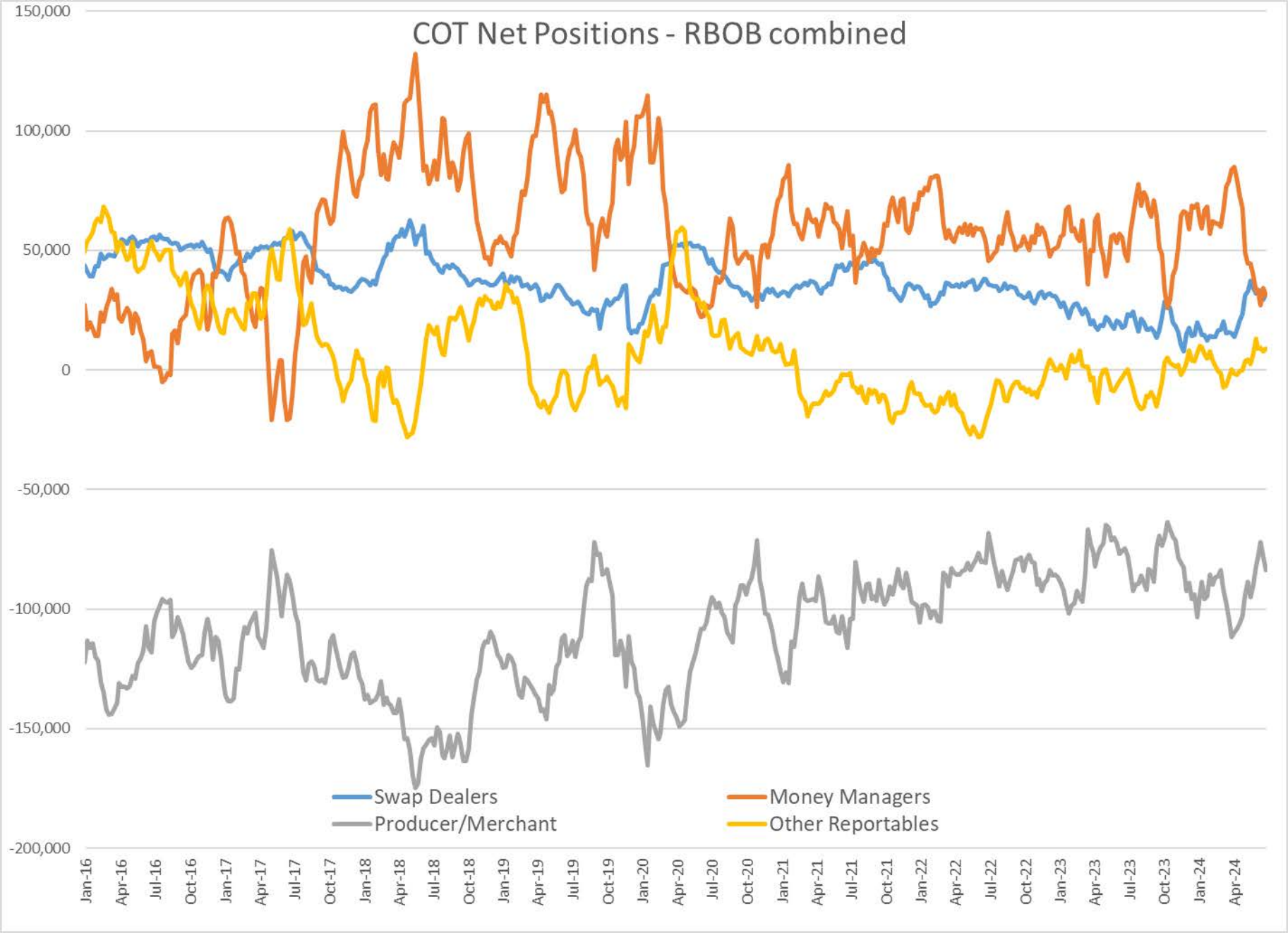




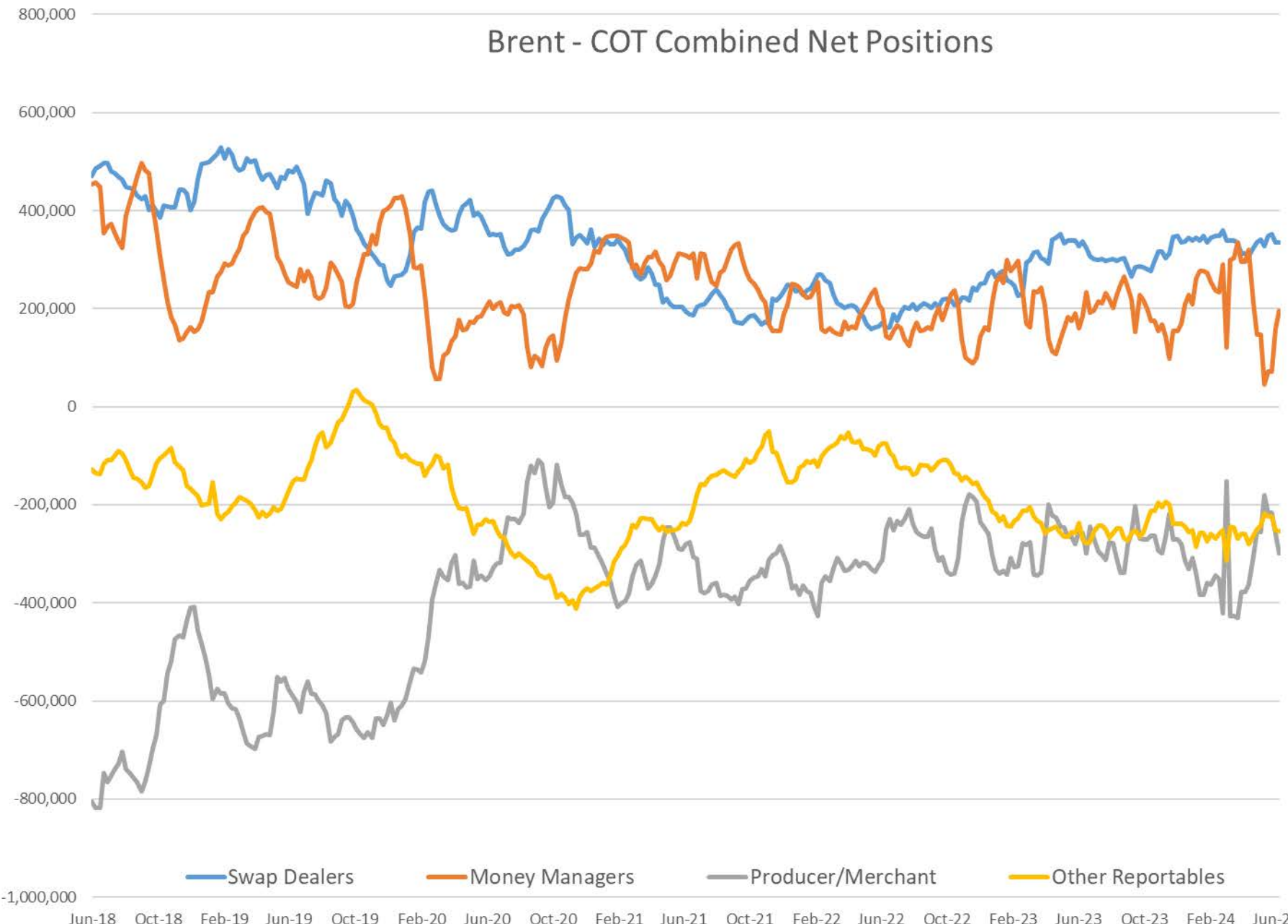
# COT Net Positions - ULSD(HO) Combined



# COT Net Positions - RBOB combined



# Brent - COT Combined Net Positions



— Swap Dealers      — Money Managers      — Producer/Merchant      — Other Reportables