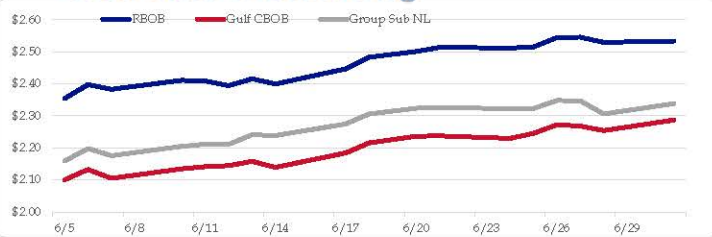


### Gasoline

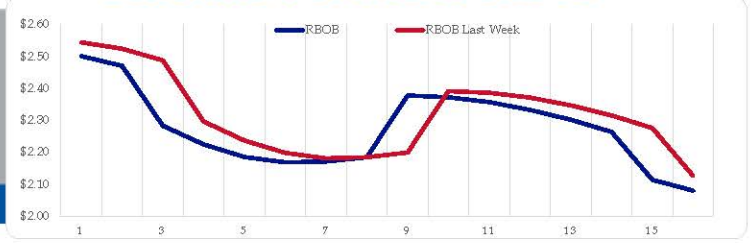
	RBOB	Change	Gulf CBOB	Change	Group Sub NL	Change	Gulf Basis	Group Basis	LA Basis
7/1	\$2.5337	<b>\$0.0326</b>	\$2.2870	<b>\$0.0329</b>	\$2.3380	<b>\$0.0321</b>	\$ (0.2472)	\$ (0.1960)	\$ (0.0681)
6/28	\$2.5291	<b>-\$0.0165</b>	\$2.2541	<b>-\$0.0141</b>	\$2.3059	<b>-\$0.0411</b>	\$ (0.2750)	\$ (0.2232)	\$ (0.0666)
6/27	\$2.5456	<b>\$0.0010</b>	\$2.2683	<b>-\$0.0040</b>	\$2.3471	<b>-\$0.0009</b>	\$ (0.2774)	\$ (0.1986)	\$ (0.0628)
6/26	\$2.5446	<b>\$0.0299</b>	\$2.2723	<b>\$0.0272</b>	\$2.3480	<b>\$0.0254</b>	\$ (0.2723)	\$ (0.1967)	\$ (0.0241)
6/25	\$2.5147	<b>\$0.0032</b>	\$2.2451	<b>\$0.0156</b>	\$2.3225	<b>\$0.0005</b>	\$ (0.2696)	\$ (0.1922)	\$ (0.0174)
6/24	\$2.5115	<b>-\$0.0022</b>	\$2.2295	<b>-\$0.0078</b>	\$2.3220	<b>-\$0.0044</b>	\$ (0.2820)	\$ (0.1895)	\$ 0.0282
6/21	\$2.5137	<b>\$0.0129</b>	\$2.2374	<b>\$0.0012</b>	\$2.3264	<b>\$0.0029</b>	\$ (0.2764)	\$ (0.1873)	\$ 0.0825
6/20	\$2.5008	<b>\$0.0176</b>	\$2.2362	<b>\$0.0206</b>	\$2.3235	<b>\$0.0176</b>	\$ (0.2647)	\$ (0.1773)	\$ 0.0443

RBOB Technicals		
Indicator	Direction	Resistance
MACD	Neutral	2.9859 Sep High
Stochastics	Overbought	2.8516 2024 High
RSI	Overbought	2.2985 June Low
ADX	Bullish Trend	2.1365 February Low
Momentum	Bullish	
Bias:	Neutral	

### Gasoline History



### Gasoline Forward Curve

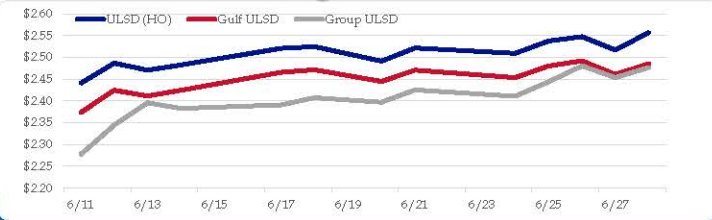


### Diesel

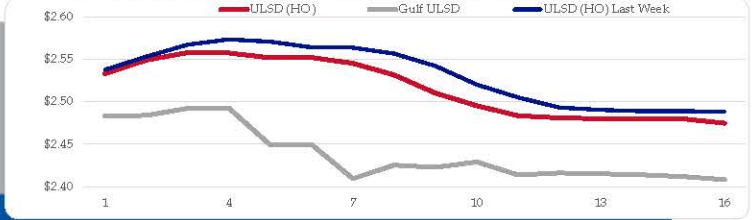
	ULSD (HO)	Change	Gulf ULSD	Change	Group ULSD	Change	Gulf Basis	Group Basis	LA Basis
7/1	\$2.5569	<b>\$0.0238</b>	\$2.4852	<b>\$0.0238</b>	\$2.4769	<b>\$0.0234</b>	\$ (0.0565)	\$ (0.0802)	\$ 0.0467
6/28	\$2.5169	<b>-\$0.0307</b>	\$2.4609	<b>-\$0.0311</b>	\$2.4535	<b>-\$0.0270</b>	\$ (0.0560)	\$ (0.0634)	\$ 0.0457
6/27	\$2.5476	<b>\$0.0101</b>	\$2.4920	<b>\$0.0117</b>	\$2.4805	<b>\$0.0365</b>	\$ (0.0557)	\$ (0.0671)	\$ 0.0098
6/26	\$2.5375	<b>\$0.0281</b>	\$2.4803	<b>\$0.0267</b>	\$2.4440	<b>\$0.0332</b>	\$ (0.0572)	\$ (0.0935)	\$ (0.0100)
6/25	\$2.5094	<b>-\$0.0120</b>	\$2.4536	<b>-\$0.0170</b>	\$2.4108	<b>-\$0.0146</b>	\$ (0.0558)	\$ (0.0986)	\$ (0.0085)
6/24	\$2.5214	<b>\$0.0299</b>	\$2.4706	<b>\$0.0256</b>	\$2.4254	<b>\$0.0283</b>	\$ (0.0508)	\$ (0.0961)	\$ (0.0086)
6/21	\$2.4915	<b>-\$0.0330</b>	\$2.4450	<b>-\$0.0266</b>	\$2.3970	<b>-\$0.0105</b>	\$ (0.0465)	\$ (0.0945)	\$ 0.0681
6/20	\$2.5245	<b>\$0.0037</b>	\$2.4716	<b>\$0.0059</b>	\$2.4075	<b>\$0.0164</b>			

HO Technicals		
Indicator	Direction	Resistance
MACD	Overbought	3.0476 Nov High
Stochastics	Bearish	2.9735 Feb High
RSI	Overbought	2.2566 June Low
ADX	Bullish	2.1500 April 2023 Low
Momentum	Bullish	
Bias:	Neutral	

### Diesel History



### Diesel Forward Curve



### Crude

	WTI	Change	Brent	Change
7/1	\$82.02	<b>\$0.48</b>	\$85.64	<b>-\$0.77</b>
6/28	\$81.54	<b>-\$0.20</b>	\$86.41	<b>\$0.02</b>
6/27	\$81.74	<b>\$0.84</b>	\$86.39	<b>\$1.14</b>
6/26	\$80.90	<b>\$0.07</b>	\$85.25	<b>\$0.24</b>
6/25	\$80.83	<b>-\$0.80</b>	\$85.01	<b>-\$0.23</b>
CPL space	Line 1 0.0913	Change <b>-\$0.0100</b>	Line 2 <b>-\$0.0135</b>	Change <b>\$0.0047</b>

### Refinery Margins

Vs WTI				Vs Brent				Group / WCS	
	Gulf Gas	Gulf Diesel	3/2/1	5/3/2	Gulf Gas	Gulf Diesel	3/2/1	5/3/2	3/2/1
7/1	\$13.13	\$21.82	\$16.03	\$16.61	\$8.26	\$16.95	\$11.16	\$11.74	\$ 29.17
6/28	\$13.53	\$22.92	\$16.66	\$17.28	\$8.88	\$18.27	\$12.01	\$12.63	\$ 30.70
6/27	\$14.54	\$23.27	\$17.45	\$18.03	\$10.19	\$18.92	\$13.10	\$13.68	\$ 31.06
6/26	\$13.46	\$22.22	\$16.38	\$16.97	\$9.28	\$18.04	\$12.20	\$12.79	\$ 29.95
6/25	\$12.01	\$22.13	\$15.38	\$16.06	\$8.40	\$18.52	\$11.77	\$12.45	\$ 29.34

### Economic Indicators

### Commodity Futures

	Settle	Change		Settle	Change
S&P 500 Futures	5,534	<b>12.25</b>	US NatGas	2.885	<b>-0.084</b>
DJIA	39,119		TTF NatGas	10.86	<b>-0.1</b>
Nasdaq 100	19,683	<b>-106.16</b>	Gold	2,328	<b>-0.5</b>
EUR/USD	1.0720	<b>0.0029</b>	Silver	29.24	<b>0.0</b>
USD Index	105.55	<b>-0.12</b>	Copper	432.70	<b>-2.700</b>
US 10 YR YIELD	4.36%	<b>0.07</b>	FCOJ	1150.50	<b>0.75</b>
US 2 YR YIELD	4.71%	<b>0.01</b>	Wheat	553.50	<b>0.50</b>
Oil Volatility Index (OVX)	26.28	<b>0.26</b>	Butane	0.910	<b>0.000</b>
S&P Volatility Index (VIX)	18.00	<b>0.71</b>	Propane	0.755	<b>0.000</b>
Nikkei 225 Index	39,835	<b>-70.00</b>	Feeder Cattle	259.3	
			Bitcoin	60,325	<b>2,890</b>

### RINs and Price Drivers

Current Year Bio RINs (D4)			Current Year Ethanol RINs (D6)		
	Settle	Net Change		Settle	Net Change
	0.5645	<b>0.002</b>		0.5635	<b>0.002</b>
Price Drivers			Price Drivers		
Soybeans	1150.50	<b>0.750</b>	Ethanol	2.05	<b>0.032</b>
Soybean Oil	43.77	<b>0.420</b>	Com	397.25	<b>-2.250</b>
BOHO Spread	0.766		Com Crush	0.629	
Soy Crush	477.90		RVO Estimate		
			Per Gallon	\$ 0.0750	\$ -
			Per Barrel	\$ 3.15	\$ -

\*SOURCES: Nymex, CBOT, NYSE, ICE, NASDAQ, CME Group, CBOE. Prices delayed.

## Commitment of Traders Report - Money Manager Recap

Date of compilation	HO Managed				WTI Managed			RBOB Managed				Brent Managed				LS Gasoil Managed				
	Long Positions	Short Positions	HO Open Interest	Net Position	Long Positions	Short Positions	WTI Open Interest	Net Position	Long Positions	Short Positions	RBOB Open Interest	Net Position	Long Positions	Short Positions	Brent Open Interest	Net Position	Long Positions	Short Positions	LS Gasoil Open Interest	Net Position
6/26/2024	22,090	34,292	379,150	(12,202)	267,671	31,855	2,087,266	235,816	65,711	31,636	379,577	34,075	257,560	99,189	3,048,184	158,371	112,920	13,516	1,012,200	99,404
6/18/2024	25,083	30,250	390,999	(5,167)	231,168	40,503	2,062,026	190,665	61,944	34,772	398,182	27,172	242,313	102,092	3,173,722	140,221	97,122	17,174	984,958	79,948
1 Week	(2,993)	4,042	(11,849)	(7,035)	36,503	(8,648)	25,240	45,151	3,767	(3,136)	(18,605)	6,903	15,247	(2,903)	(125,538)	18,150	15,798	(3,658)	27,242	19,456
% Change	-11.9%	13.4%	-3.0%	136.2%	15.8%	-21.4%	1.2%	23.7%	6.1%	-9.0%	-4.7%	25.4%	6.3%	-2.8%	-4.0%	12.9%	16.3%	-21.3%	2.8%	24.3%
1 Year	(15,983)	13,039	80,074	(29,022)	60,368	(103,905)	(215,076)	164,273	4,694	19,218	47,092	(14,524)	29,927	31,356	213,889	(1,429)	63,875	(19,741)	278,419	83,616
% Change	-42%	61%	27%	-173%	29%	-77%	-9%	230%	8%	155%	14%	-30%	13%	46%	8%	-1%	130%	-59%	38%	530%



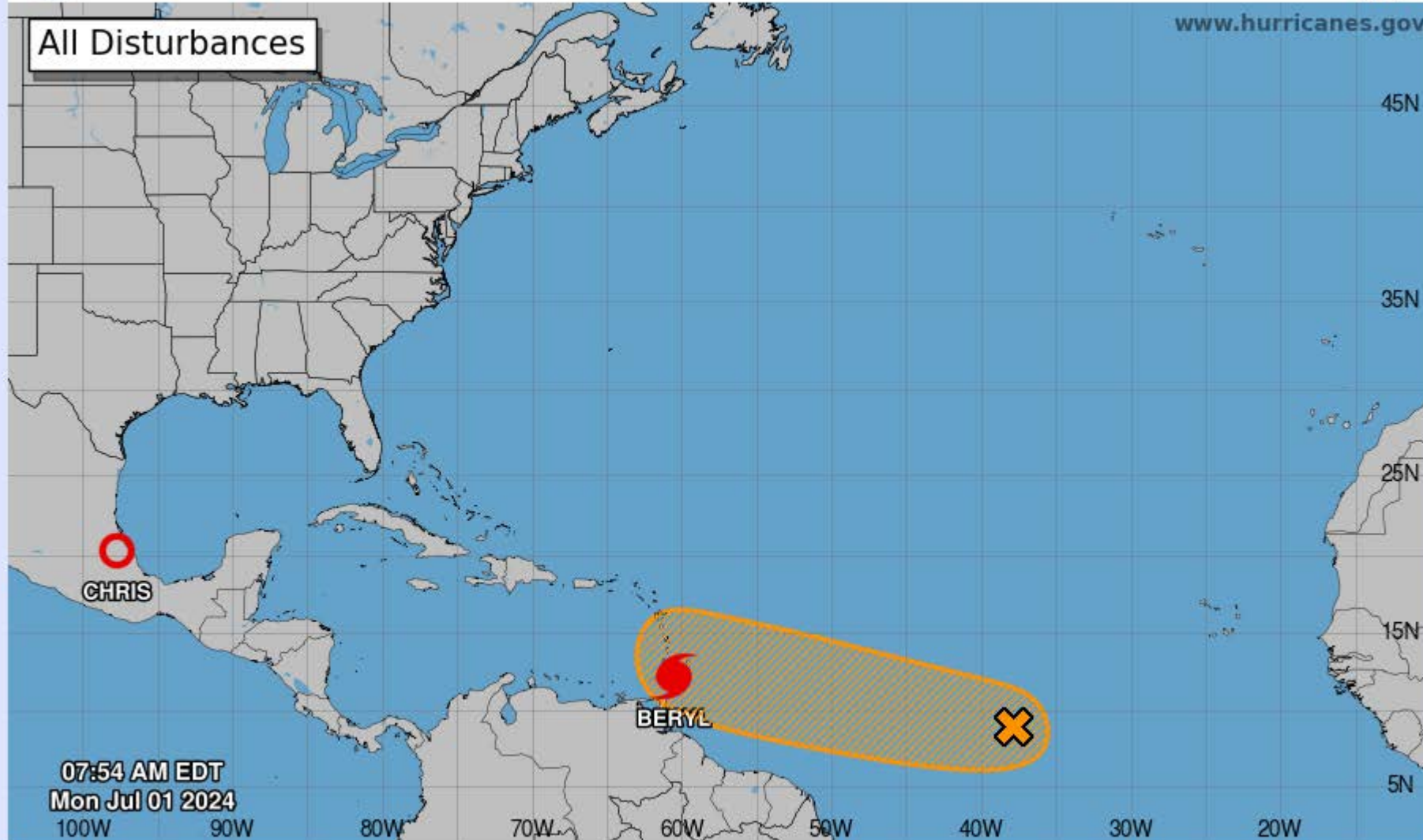
# Seven-Day Graphical Tropical Weather Outlook

National Hurricane Center Miami, Florida



[www.hurricanes.gov](http://www.hurricanes.gov)

All Disturbances



07:54 AM EDT  
Mon Jul 01 2024

Current Disturbances and Seven-Day Cyclone Formation Chance: < 40% 40-60% > 60%

Tropical or Sub-Tropical Cyclone: Depression Storm Hurricane

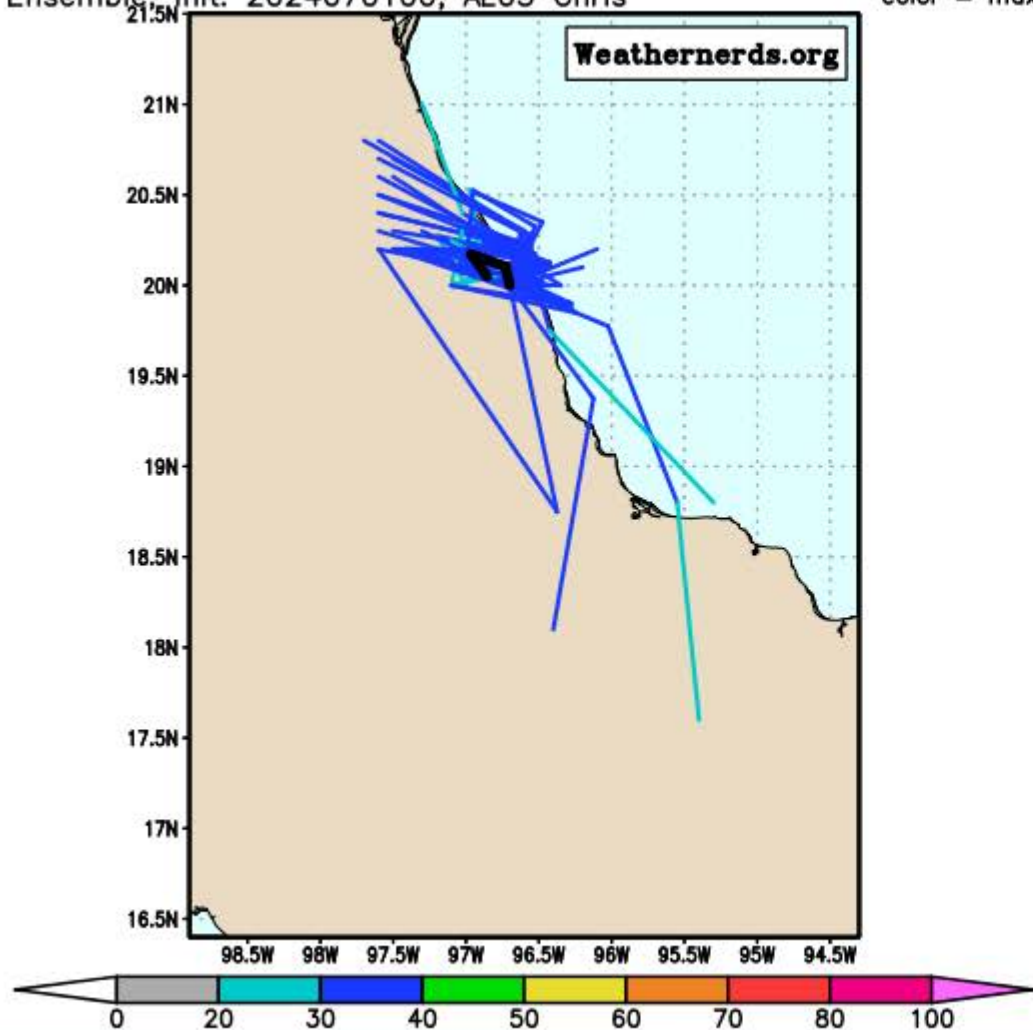
Post-Tropical Cyclone or Remnants

[View 2-Day Graphical Tropical Weather Outlook](#)

(click for larger image)

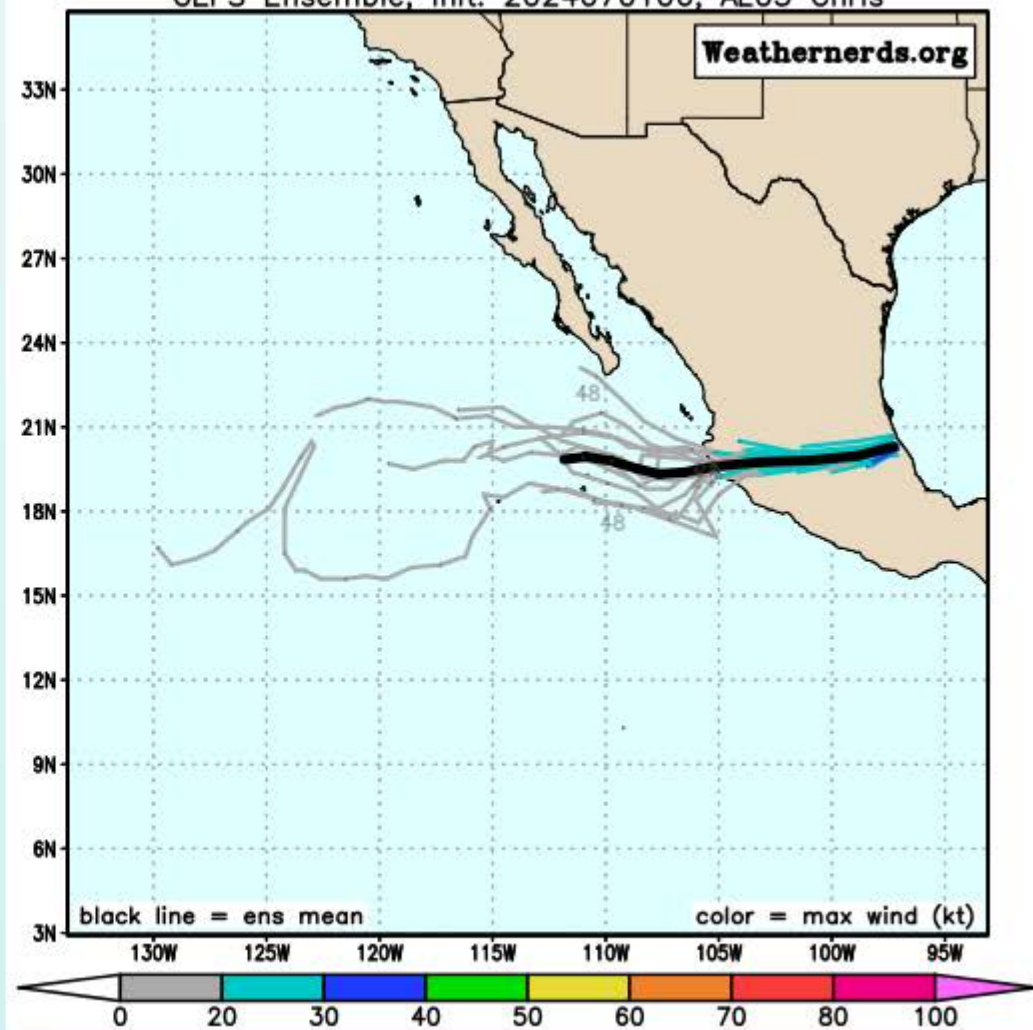
ECMWF Ensemble, init: 2024070100, AL03 Chris

color = max wind (kt)



(click for larger image)

GEFS Ensemble, init: 2024070106, AL03 Chris



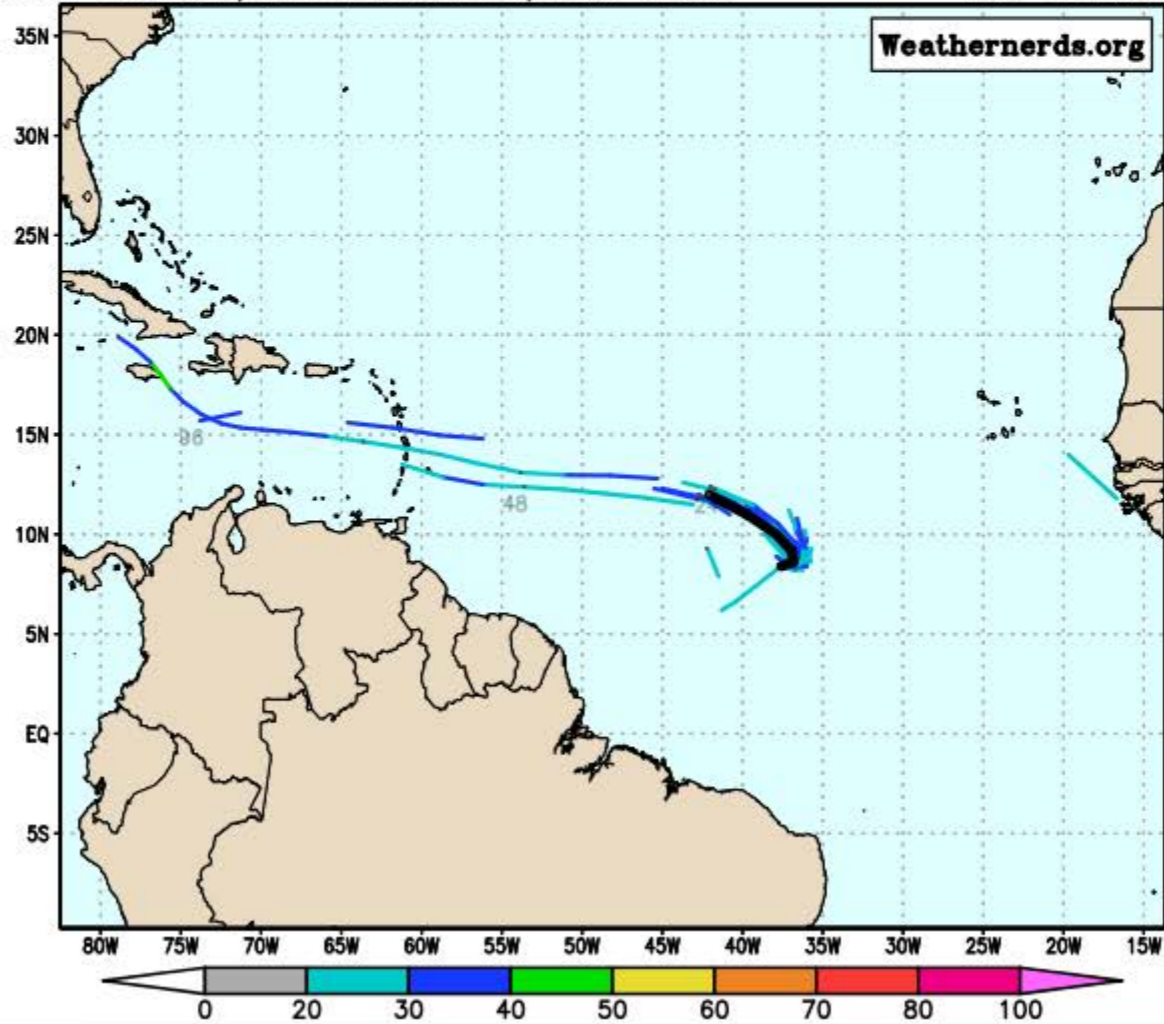
NOTE on ECMWF Ensembles: These data are plotted directly as provided to the public by the ECMWF

# ECMWF Ensemble

Loop

(click for larger image)

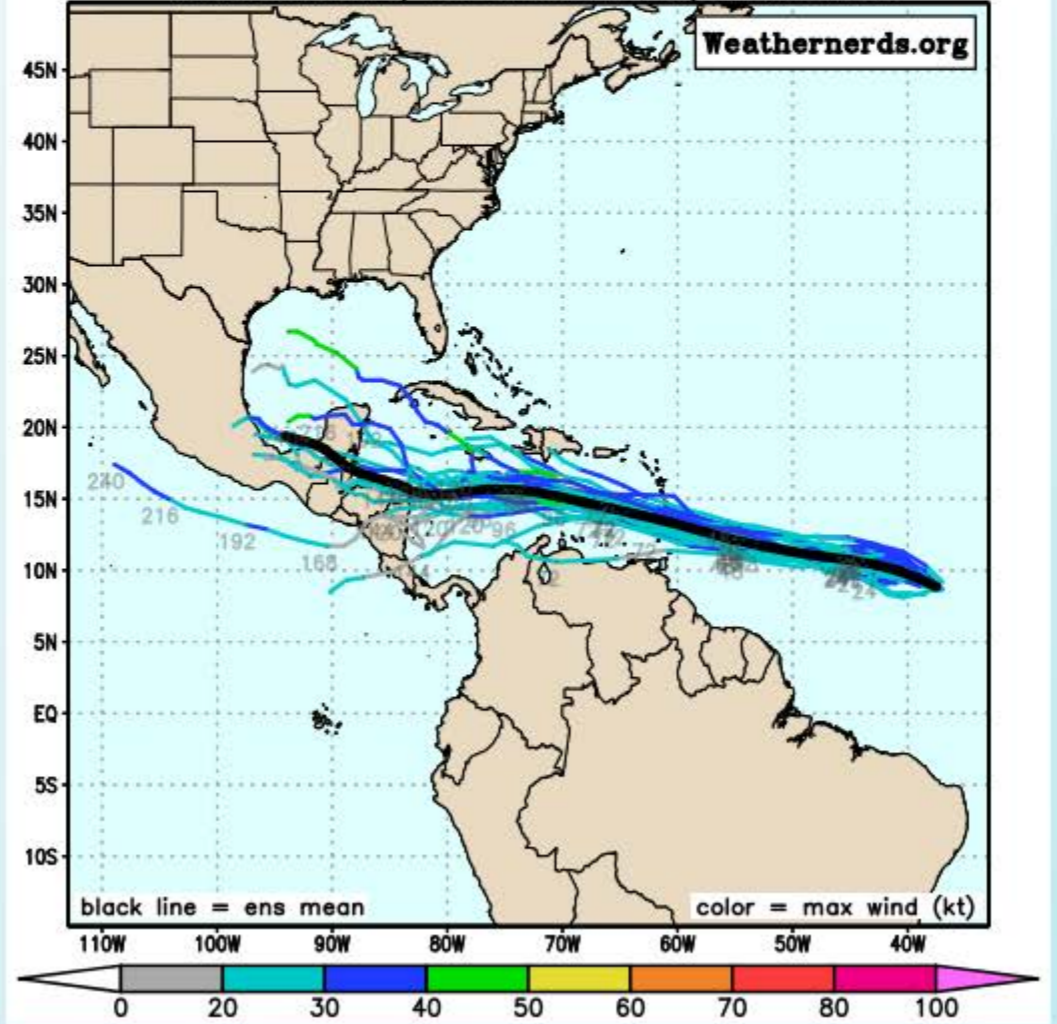
ECMWF Ensemble, init: 2024070100, AL96 Invest color = max wind (kt)



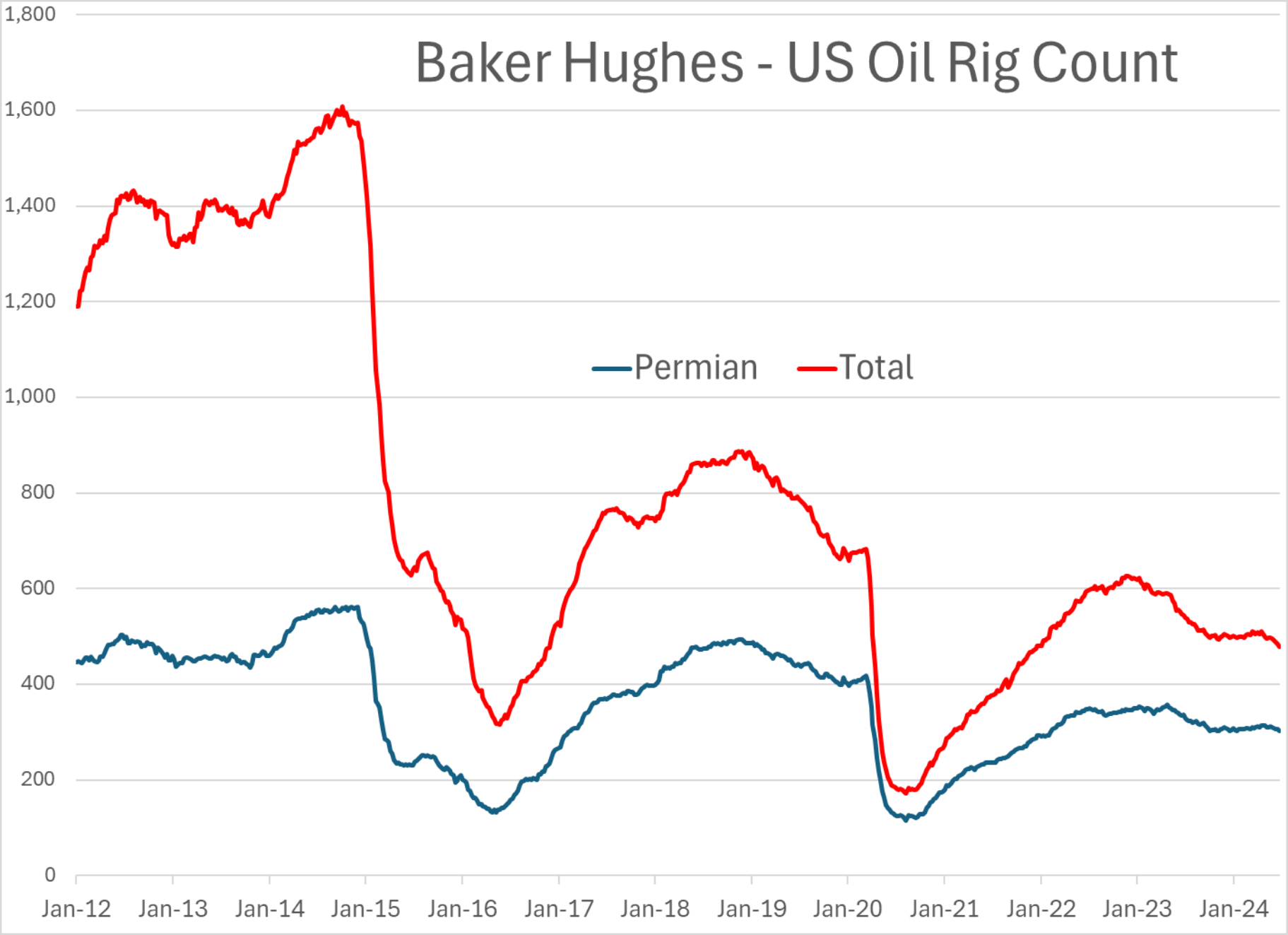
# GEFS Ensemble

(click for larger image)

GEFS Ensemble, init: 2024070106, AL96 Invest

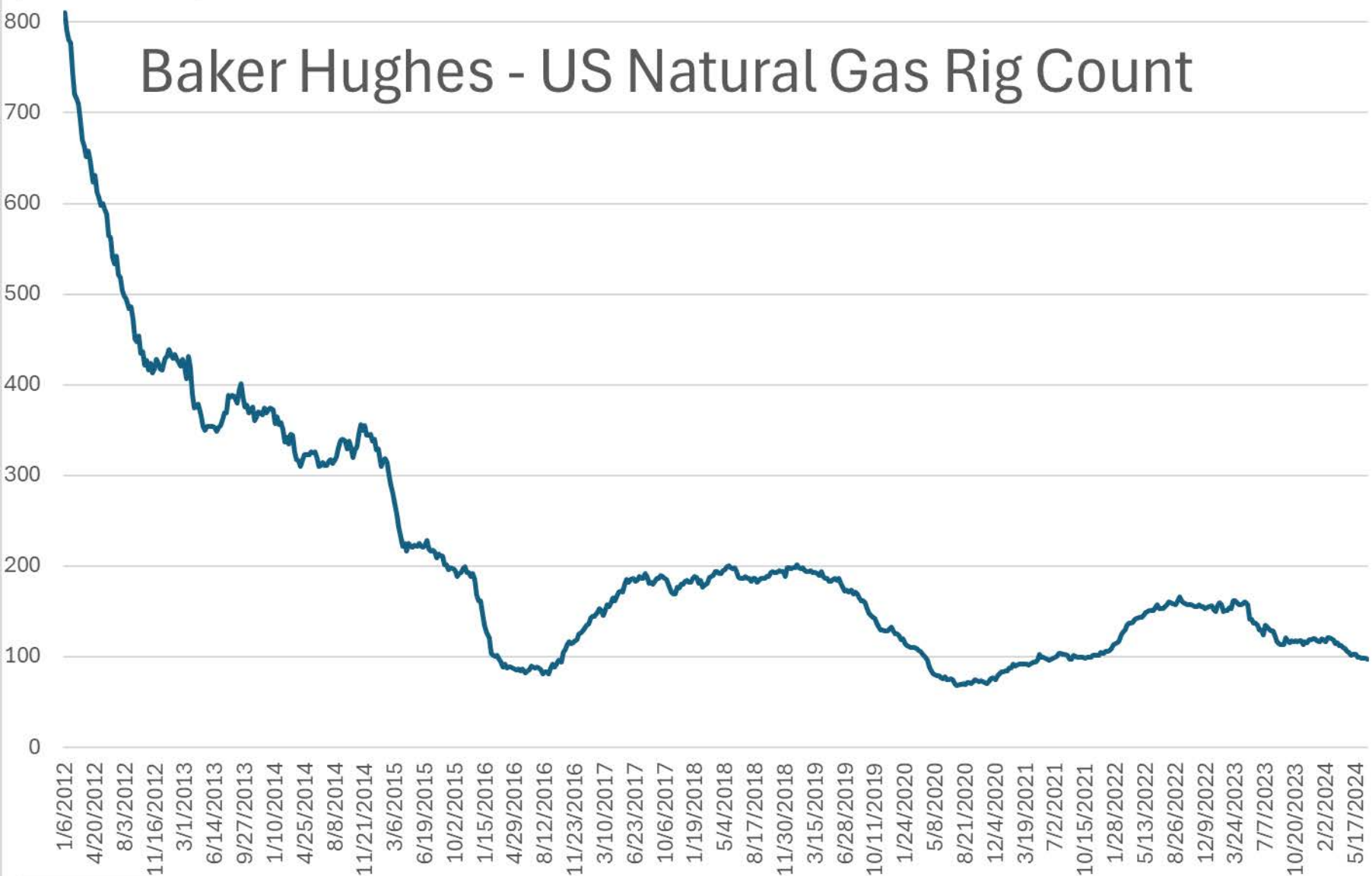


# Baker Hughes - US Oil Rig Count

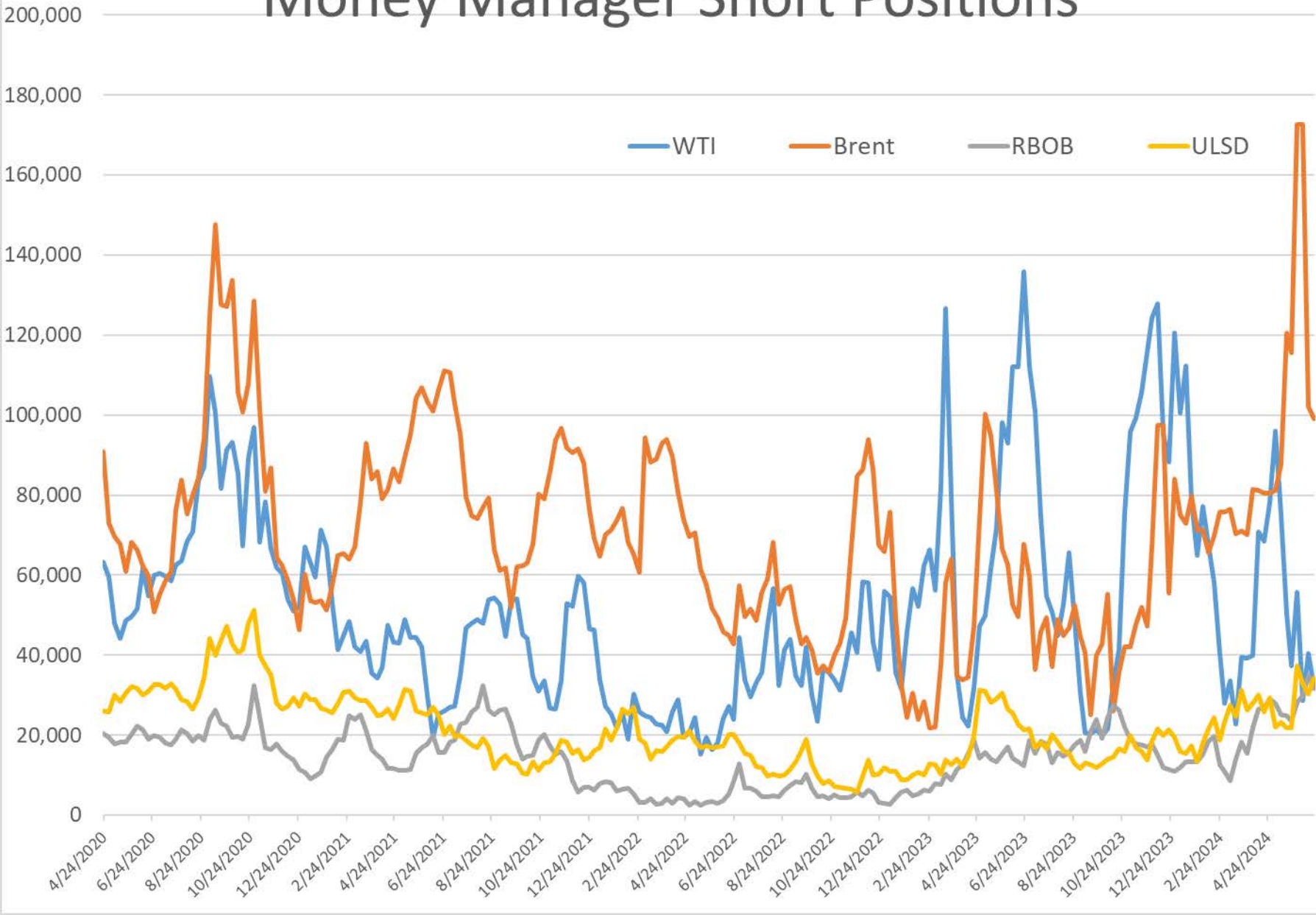


Sum of Rig Count Value

# Baker Hughes - US Natural Gas Rig Count

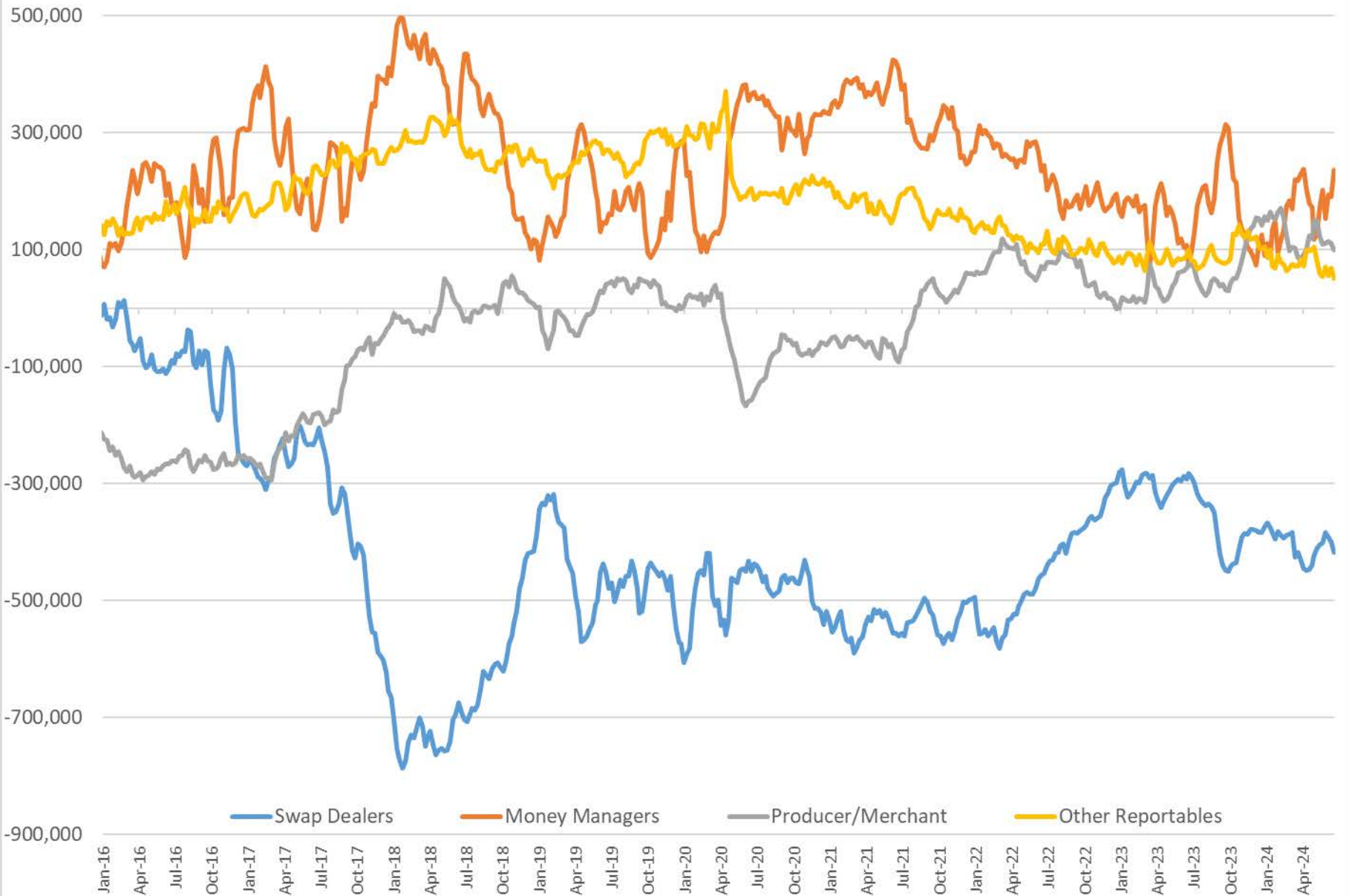


# Money Manager Short Positions

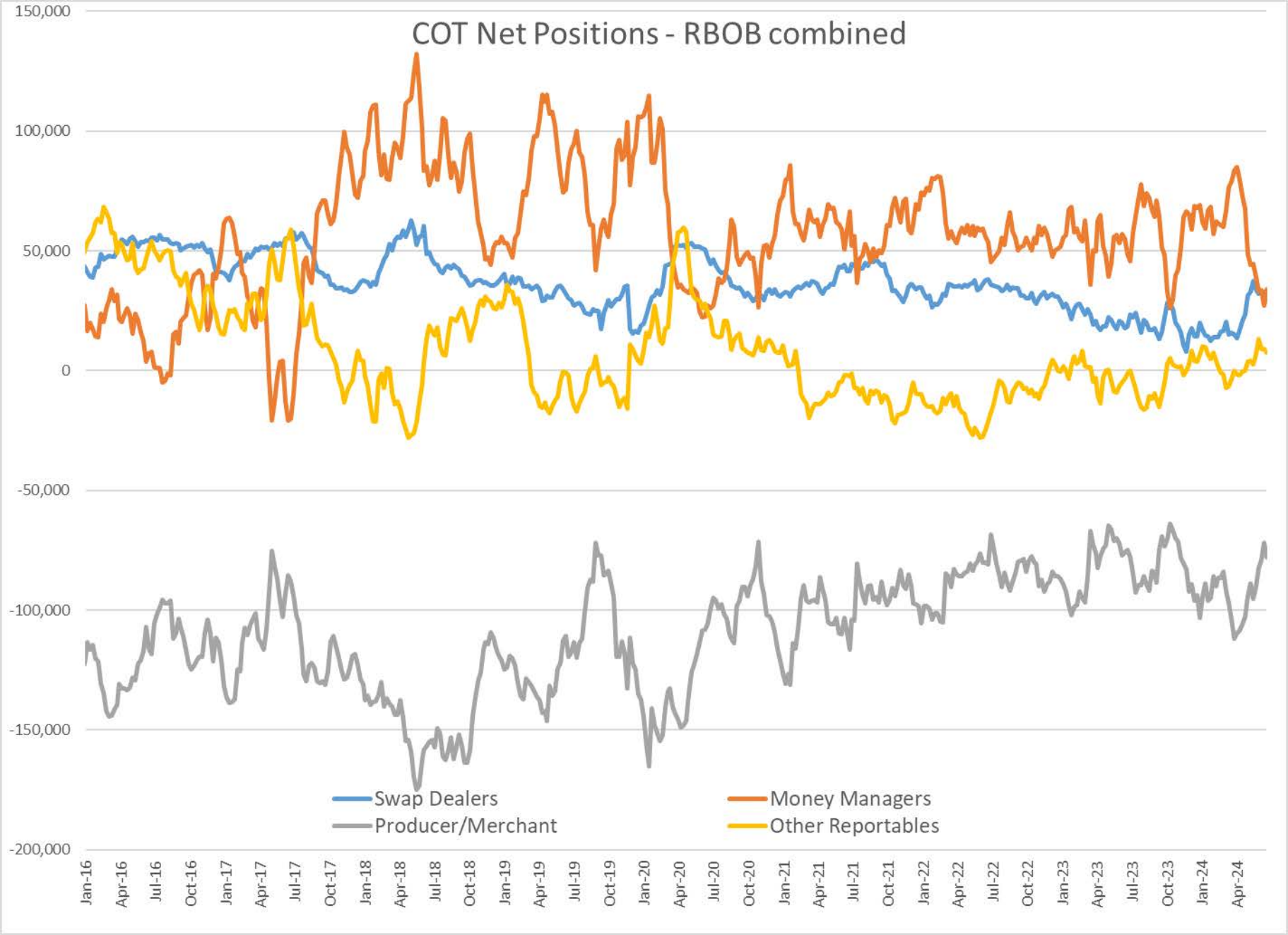




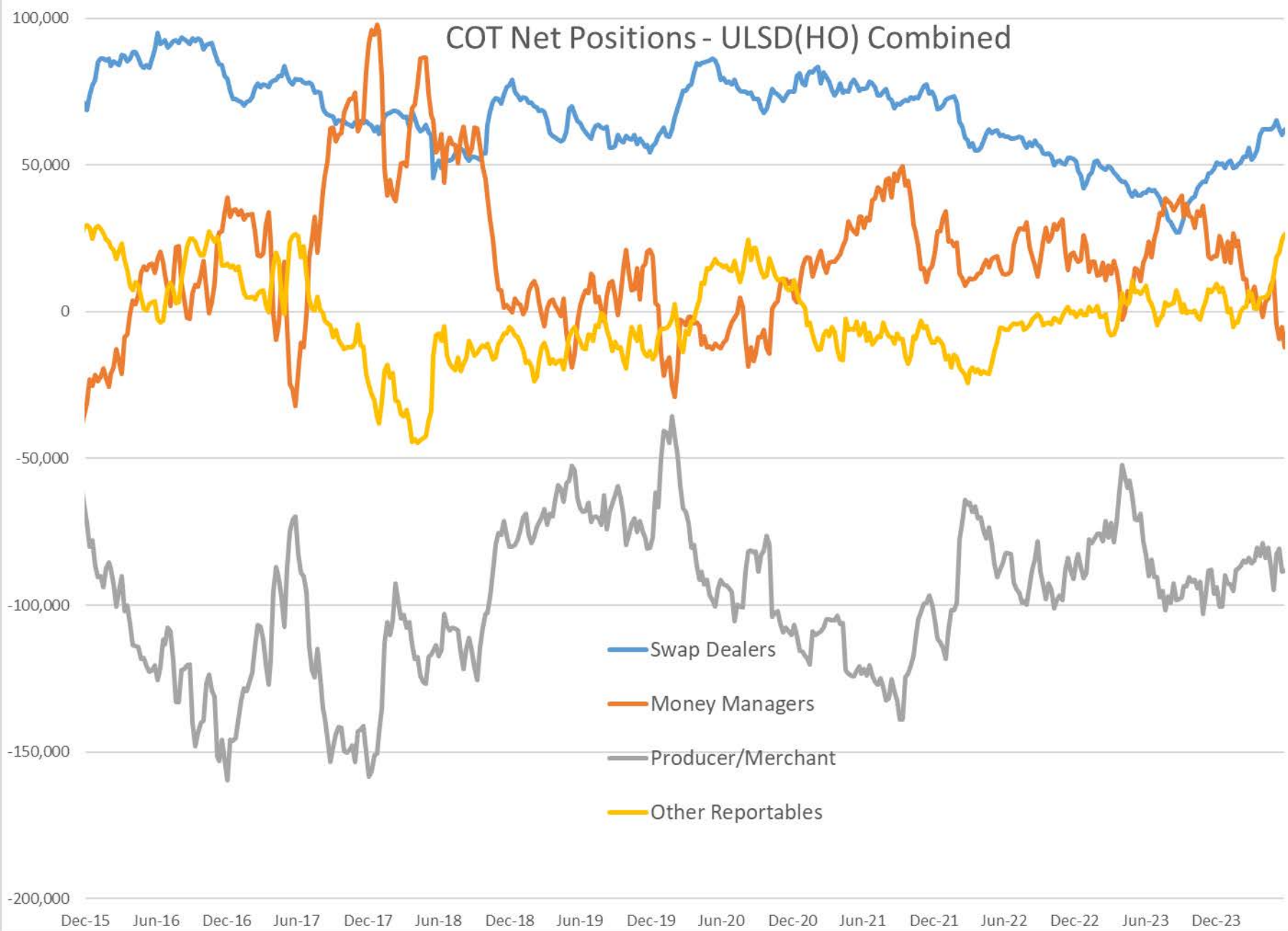
# COT Net Positions - WTI combined



# COT Net Positions - RBOB combined



# COT Net Positions - ULSD(HO) Combined



# Brent - COT Combined Net Positions

