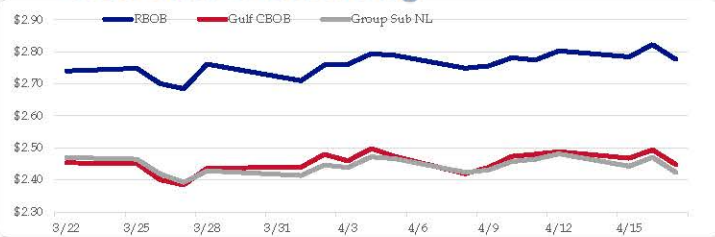


### Gasoline

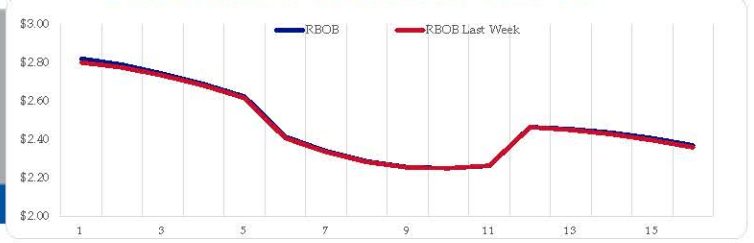
	RBOB	Change	Gulf CBOB	Change	Group Sub NL	Change	Gulf Basis	Group Basis	LA Basis
4/17	\$2.7756	<b>-\$0.0467</b>	\$2.4473	<b>-\$0.0464</b>	\$2.4233	<b>-\$0.0472</b>	\$ (0.3288)	\$ (0.3527)	\$ 0.3945
4/16	\$2.8223	<b>\$0.0384</b>	\$2.4937	<b>\$0.0258</b>	\$2.4705	<b>\$0.0276</b>	\$ (0.3287)	\$ (0.3519)	\$ 0.3960
4/15	\$2.7839	<b>-\$0.0190</b>	\$2.4679	<b>-\$0.0204</b>	\$2.4429	<b>-\$0.0384</b>	\$ (0.3161)	\$ (0.3411)	\$ 0.4160
4/12	\$2.8029	<b>\$0.0288</b>	\$2.4882	<b>\$0.0080</b>	\$2.4813	<b>\$0.0168</b>	\$ (0.3147)	\$ (0.3217)	\$ 0.4810
4/11	\$2.7741	<b>-\$0.0075</b>	\$2.4802	<b>\$0.0066</b>	\$2.4644	<b>\$0.0073</b>	\$ (0.2940)	\$ (0.3097)	\$ 0.4795
4/10	\$2.7816	<b>\$0.0260</b>	\$2.4736	<b>\$0.0347</b>	\$2.4571	<b>\$0.0263</b>	\$ (0.3080)	\$ (0.3245)	\$ 0.4897
4/9	\$2.7556	<b>\$0.0070</b>	\$2.4389	<b>\$0.0192</b>	\$2.4308	<b>\$0.0070</b>	\$ (0.3168)	\$ (0.3248)	\$ 0.4846
4/8	\$2.7486	<b>-\$0.0400</b>	\$2.4197	<b>-\$0.0538</b>	\$2.4238	<b>-\$0.0425</b>	\$ (0.3290)	\$ (0.3248)	\$ 0.3518

RBOB Technicals		
Indicator	Direction	Resistance
MACD	Neutral	2.9859 Sep High
Stochastics	Overbought	2.8516 2024 High
RSI	Neutral	2.0072 Jan 2024 Low
ADX	Bullish Trend	1.9672 Dec 2023 Low
Momentum	Neutral	Support
Bias:	Neutral	

### Gasoline History



### Gasoline Forward Curve

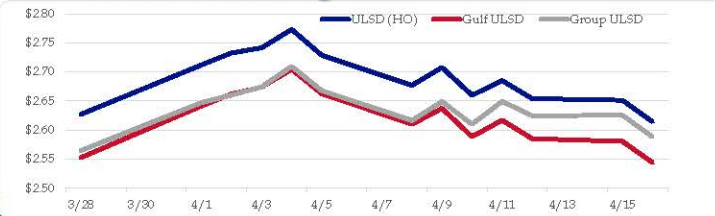


### Diesel

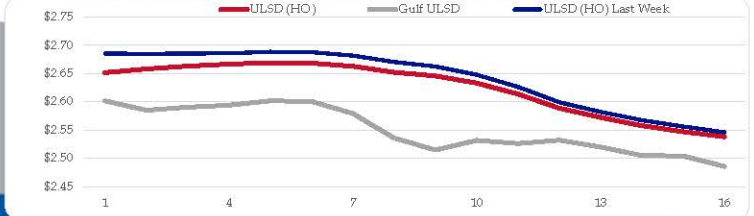
	ULSD (HO)	Change	Gulf ULSD	Change	Group ULSD	Change	Gulf Basis	Group Basis	LA Basis
4/17	\$2.6144	<b>-\$0.0369</b>	\$2.5442	<b>-\$0.0369</b>	\$2.5882	<b>-\$0.0373</b>	\$ (0.0712)	\$ (0.0265)	\$ 0.0355
4/16	\$2.6513	<b>-\$0.0029</b>	\$2.5806	<b>-\$0.0047</b>	\$2.6255	<b>\$0.0008</b>	\$ (0.0707)	\$ (0.0259)	\$ 0.0345
4/15	\$2.6542	<b>-\$0.0309</b>	\$2.5853	<b>-\$0.0316</b>	\$2.6246	<b>-\$0.0245</b>	\$ (0.0689)	\$ (0.0296)	\$ 0.0345
4/12	\$2.6851	<b>\$0.0253</b>	\$2.6169	<b>\$0.0282</b>	\$2.6491	<b>\$0.0392</b>	\$ (0.0682)	\$ (0.0360)	\$ 0.0695
4/11	\$2.6598	<b>-\$0.0478</b>	\$2.5887	<b>-\$0.0484</b>	\$2.6099	<b>-\$0.0391</b>	\$ (0.0711)	\$ (0.0499)	\$ 0.0695
4/10	\$2.7076	<b>\$0.0306</b>	\$2.6371	<b>\$0.0270</b>	\$2.6491	<b>\$0.0328</b>	\$ (0.0705)	\$ (0.0585)	\$ 0.0945
4/9	\$2.6770	<b>-\$0.0517</b>	\$2.6101	<b>-\$0.0527</b>	\$2.6163	<b>-\$0.0517</b>	\$ (0.0669)	\$ (0.0608)	\$ 0.1095
4/8	\$2.7287	<b>-\$0.0443</b>	\$2.6628	<b>-\$0.0418</b>	\$2.6680	<b>-\$0.0416</b>			

HO Technicals		
Indicator	Direction	Resistance
MACD	Neutral	3.0476 Nov High
Stochastics	Bearish	2.9735 Feb High
RSI	Neutral	2.4840 Dec Low
ADX	Bearish	2.3750 July Low
Momentum	Bearish	Support
Bias:	Bearish	

### Diesel History



### Diesel Forward Curve



### Crude

	WTI	Change	Brent	Change
4/17	\$84.33	<b>-\$1.03</b>	\$88.98	<b>-\$1.04</b>
4/16	\$85.36	<b>-\$0.06</b>	\$90.02	<b>-\$0.08</b>
4/15	\$85.41	<b>-\$0.25</b>	\$90.10	<b>-\$0.35</b>
4/12	\$85.66	<b>\$0.64</b>	\$90.45	<b>\$0.71</b>
4/11	\$85.02	<b>-\$1.19</b>	\$89.74	<b>\$0.32</b>
CPL space	Line 1 0.1150	Change <b>\$0.0000</b>	Line 2 -0.0095	Change <b>\$0.0012</b>

### Refinery Margins

Vs WTI				Vs Brent				Group / WCS	
	Gulf Gas	Gulf Diesel	3/2/1	5/3/2	Gulf Gas	Gulf Diesel	3/2/1	5/3/2	3/2/1
4/17	\$19.37	\$23.03	\$20.59	\$20.83	\$14.71	\$18.37	\$15.93	\$16.17	\$ 32.52
4/16	\$18.24	\$23.17	\$19.88	\$20.21	\$13.55	\$18.48	\$15.19	\$15.52	\$ 31.73
4/15	\$18.84	\$24.25	\$20.65	\$21.01	\$14.05	\$19.46	\$15.86	\$16.22	\$ 32.90
4/12	\$19.15	\$23.71	\$20.67	\$20.97	\$14.43	\$18.99	\$15.95	\$16.25	\$ 32.52
4/11	\$17.68	\$24.55	\$19.97	\$20.43	\$14.47	\$21.34	\$16.76	\$17.22	\$ 31.68

### Economic Indicators

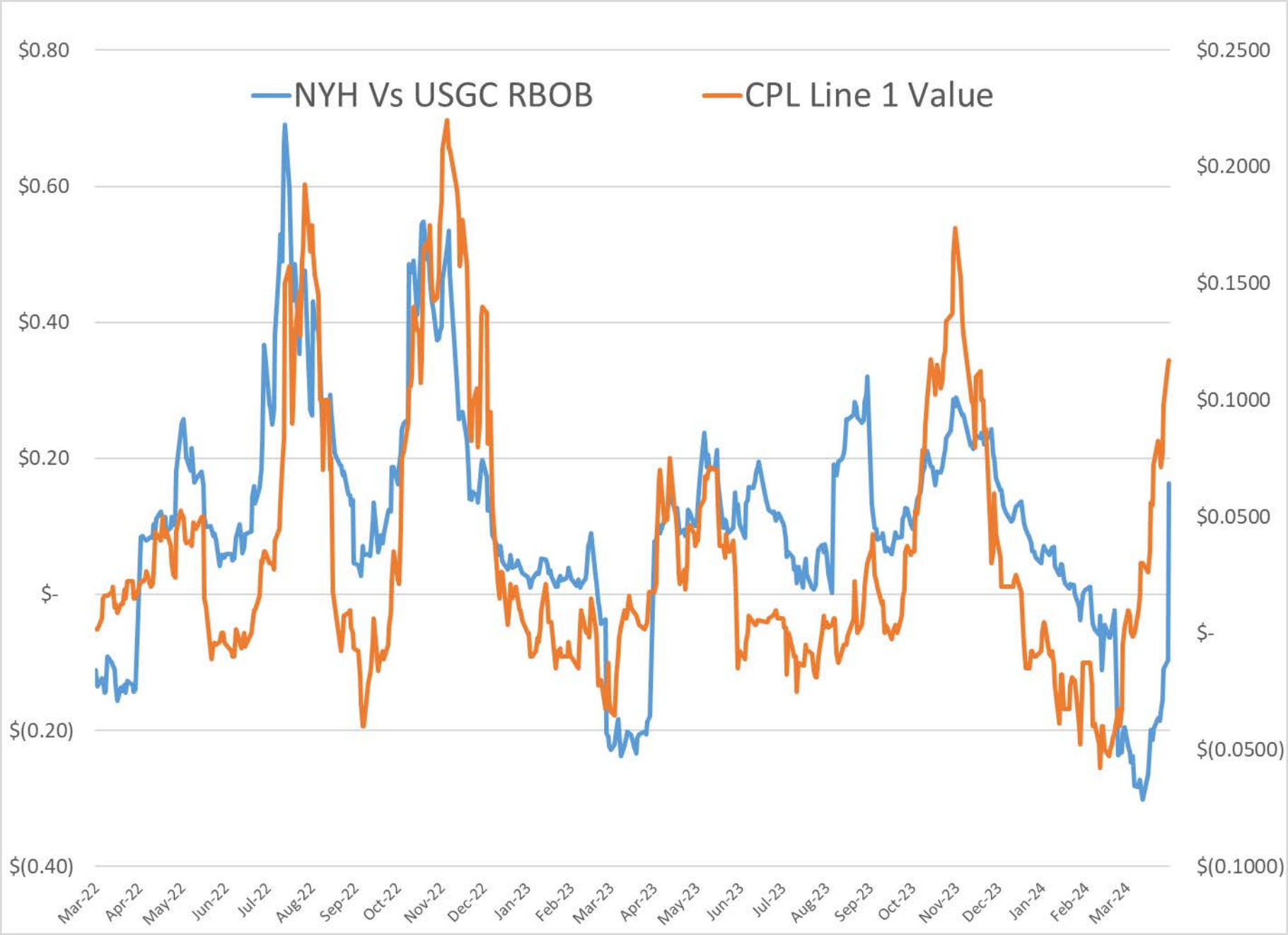
### Commodity Futures

	Settle	Change		Settle	Change
S&P 500 Futures	5,110	<b>17.50</b>	US NatGas	1.732	
DJIA	37,799	<b>63.86</b>	TTF NatGas	10.34	<b>0.6</b>
Nasdaq 100	17,714	<b>6.83</b>	Gold	2,391	<b>-7.8</b>
EUR/USD	1.0642	<b>0.0013</b>	Silver	28.32	
USD Index	106.07	<b>-0.04</b>	Copper	364.05	<b>-1.100</b>
US 10 YR YIELD	4.67%	<b>0.04</b>	FCOJ	1145.00	<b>-0.50</b>
US 2 YR YIELD	4.97%	<b>0.04</b>	Wheat	549.75	<b>3.00</b>
Oil Volatility Index (OVX)	35.59	<b>-1.98</b>	Butane	0.979	<b>0.001</b>
S&P Volatility Index (VIX)	19.23	<b>-0.83</b>	Propane	0.820	<b>0.003</b>
Nikkei 225 Index	38,495	<b>-305.00</b>	Feeder Cattle	240.4	<b>-0.20</b>
			Bitcoin	62,920	<b>-395</b>

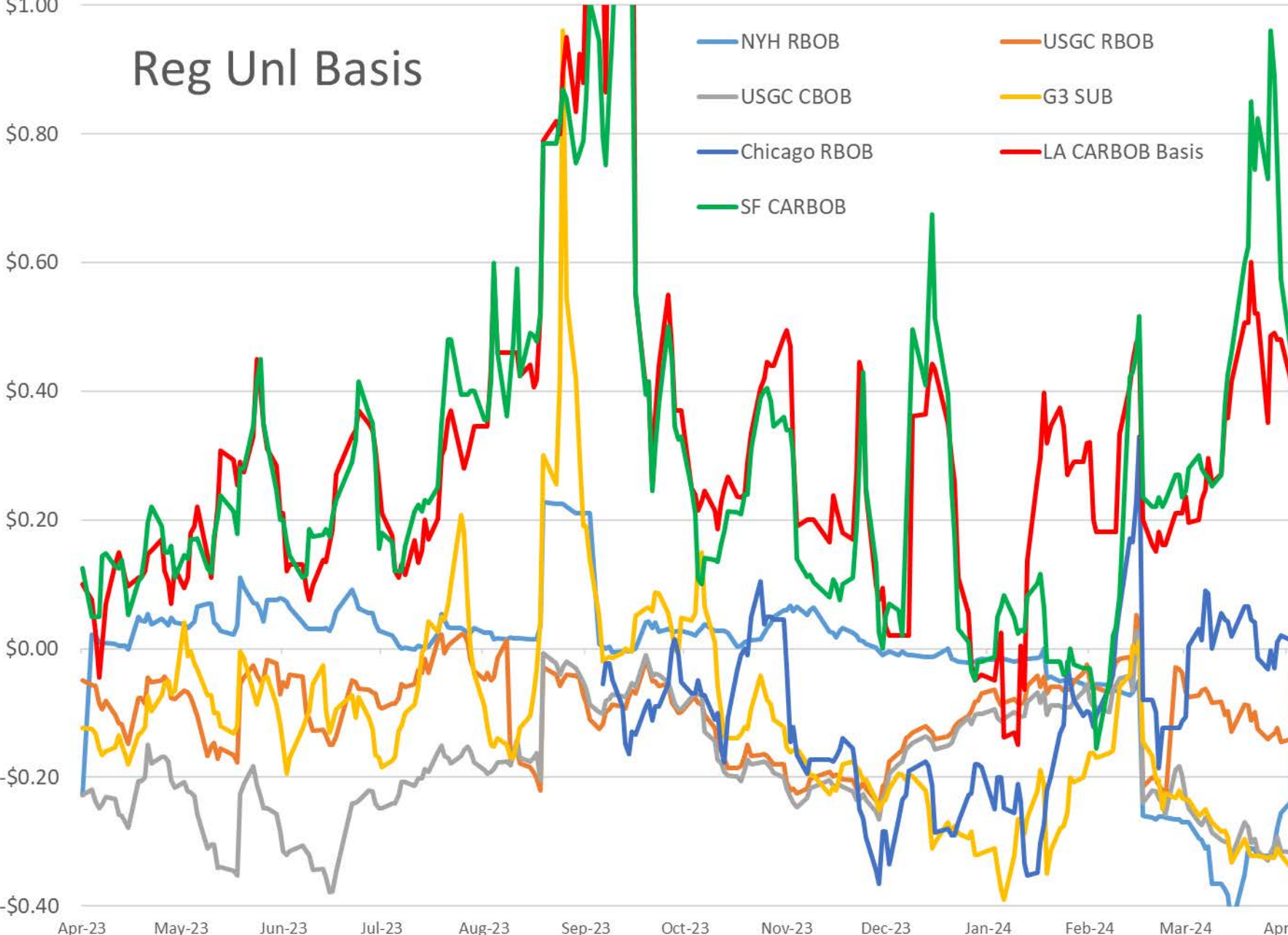
### RINs and Price Drivers

Current Year Bio RINs (D4)			Current Year Ethanol RINs (D6)		
	Settle	Net Change		Settle	Net Change
	0.4495	<b>-0.025</b>		0.4460	<b>-0.026</b>
Price Drivers			Price Drivers		
Soybeans	Settle 1145.00	Net Change <b>-0.500</b>	Ethanol	Settle 1.63	Net Change <b>0.000</b>
Soybean Oil	44.91	<b>-0.050</b>	Com	431.00	<b>0.750</b>
BOHO Spread	0.717		Com Crush	0.094	
Soy Crush	489.94		RVO Estimate		
			Per Gallon	\$ 0.0640	\$ <b>(0.0030)</b>
			Per Barrel	\$ 2.69	\$ <b>(0.13)</b>

\*SOURCES: Nymex, CBOT, NYSE, ICE, NASDAQ, CME Group, CBOE. Prices delayed.



# Reg Unl Basis





# Current Year RIN Values

