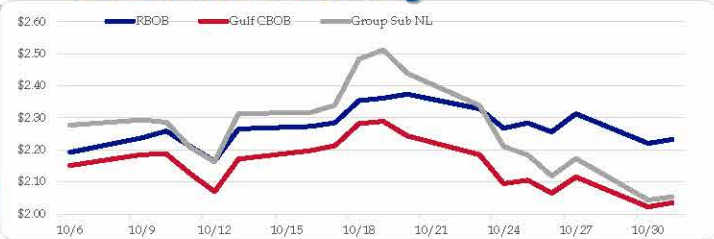


**Gasoline**

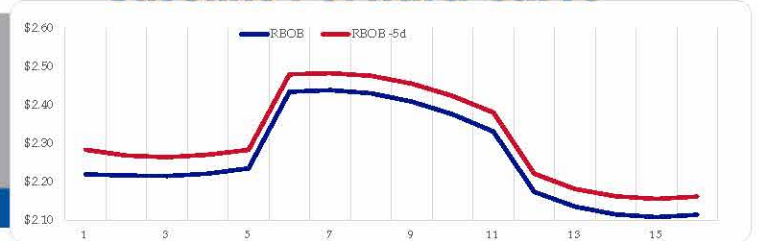
	RBOB	Change	Gulf CBOB	Change	Group Sub NL	Change	Gulf Basis	Group Basis	LA Basis
10/31	\$2.2325	<b>\$0.0125</b>	\$2.0347	<b>\$0.0128</b>	\$2.0528	<b>\$0.0090</b>	\$ (0.1983)	\$ (0.1801)	\$ 0.2363
10/30	\$2.2200	<b>-\$0.0925</b>	\$2.0219	<b>-\$0.0935</b>	\$2.0438	<b>-\$0.1290</b>	\$ (0.1981)	\$ (0.1763)	\$ 0.2378
10/27	\$2.3125	<b>\$0.0564</b>	\$2.1154	<b>\$0.0505</b>	\$2.1727	<b>\$0.0545</b>	\$ (0.1971)	\$ (0.1398)	\$ 0.2687
10/26	\$2.2561	<b>-\$0.0281</b>	\$2.0649	<b>-\$0.0407</b>	\$2.1182	<b>-\$0.0663</b>	\$ (0.1912)	\$ (0.1379)	\$ 0.2495
10/25	\$2.2842	<b>\$0.0166</b>	\$2.1056	<b>\$0.0109</b>	\$2.1845	<b>-\$0.0261</b>	\$ (0.1786)	\$ (0.0997)	\$ 0.2291
10/24	\$2.2676	<b>-\$0.0609</b>	\$2.0947	<b>-\$0.0902</b>	\$2.2106	<b>-\$0.1281</b>	\$ (0.1729)	\$ (0.0570)	\$ 0.1848
10/23	\$2.3285	<b>-\$0.0451</b>	\$2.1849	<b>-\$0.0587</b>	\$2.3387	<b>-\$0.1001</b>	\$ (0.1437)	\$ 0.0102	\$ 0.2146
10/20	\$2.3736	<b>\$0.0119</b>	\$2.2436	<b>-\$0.0454</b>	\$2.4388	<b>-\$0.0731</b>	\$ (0.1300)	\$ 0.0652	\$ 0.2468

RBOB Technicals		
Indicator	Direction	Resistance
MACD	Neutral	2.9936 2023 High
Stochastics	Bearish	2.7703 Sep High
RSI	Neutral	2.1709 2023 Low
ADX	Bearish	2.0204 Dec 2022 Low
Momentum	Bullish	
Bias:	Neutral	

**Gasoline History**



**Gasoline Forward Curve**



**Diesel**

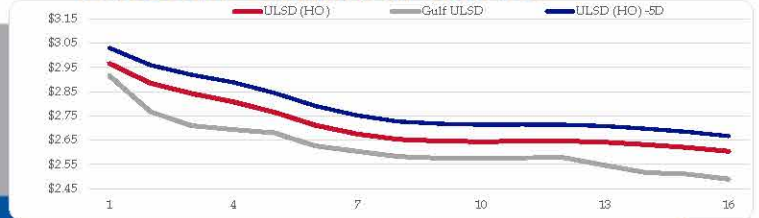
	ULSD (HO)	Change	Gulf ULSD	Change	Group ULSD	Change	Gulf Basis	Group Basis	LA Basis
10/31	\$3.0033	<b>\$0.0370</b>	\$2.8475	<b>\$0.0373</b>	\$2.9439	<b>\$0.0372</b>	\$ (0.1572)	\$ (0.0596)	\$ (0.0817)
10/30	\$2.9663	<b>-\$0.0856</b>	\$2.8097	<b>-\$0.0831</b>	\$2.9067	<b>-\$0.1181</b>	\$ (0.1567)	\$ (0.0596)	\$ (0.0827)
10/27	\$3.0519	<b>\$0.0080</b>	\$2.8928	<b>\$0.0029</b>	\$3.0248	<b>\$0.0069</b>	\$ (0.1591)	\$ (0.0271)	\$ (0.0837)
10/26	\$3.0439	<b>\$0.0134</b>	\$2.8899	<b>\$0.0048</b>	\$3.0179	<b>-\$0.0102</b>	\$ (0.1541)	\$ (0.0260)	\$ (0.0388)
10/25	\$3.0305	<b>-\$0.0144</b>	\$2.8850	<b>-\$0.0220</b>	\$3.0281	<b>-\$0.0845</b>	\$ (0.1455)	\$ (0.0024)	\$ (0.0319)
10/24	\$3.0449	<b>-\$0.0506</b>	\$2.9070	<b>-\$0.0622</b>	\$3.1126	<b>-\$0.5234</b>	\$ (0.1379)	\$ 0.0677	\$ (0.0429)
10/23	\$3.0955	<b>-\$0.0611</b>	\$2.9692	<b>-\$0.0603</b>	\$3.6360	<b>-\$0.5686</b>	\$ (0.1263)	\$ 0.5405	\$ (0.0104)
10/20	\$3.1566	<b>-\$0.0164</b>	\$3.0295	<b>-\$0.0413</b>	\$4.2046	<b>\$0.0063</b>			

HO Technicals		
Indicator	Direction	Resistance
MACD	Neutral	3.5800 2003 High
Stochastics	Bearish	3.5092 Sep High
RSI	Neutral	2.8336 Oct Low
ADX	Bearish	2.1500 2023 low
Momentum	Neutral	
Bias:	Neutral	

**Diesel History**



**Diesel Forward Curve**



**Crude**

**Refinery Margins**

WTI				Brent				Vs WTI				Vs Brent				Group / WCS
	WTI	Change	Brent	Change	Gulf Gas	Gulf Diesel	3/2/1	5/3/2	Gulf Gas	Gulf Diesel	3/2/1	5/3/2		3/2/1		
10/31	\$82.94	<b>\$0.63</b>	\$88.02	<b>\$0.57</b>	\$2.61	\$35.70	\$13.64	\$15.84	-\$2.53	\$30.56	\$8.50	\$10.70	\$	24.38		
10/30	\$82.31	<b>-\$3.23</b>	\$87.45	<b>-\$3.03</b>	\$3.31	\$35.96	\$14.19	\$16.37	-\$1.63	\$31.02	\$9.25	\$11.43	\$	29.64		
10/27	\$85.54	<b>\$2.33</b>	\$90.48	<b>\$2.55</b>	\$3.31	\$35.96	\$15.07	\$17.37	-\$1.20	\$33.44	\$10.35	\$12.65	\$	30.35		
10/26	\$83.21	<b>-\$2.18</b>	\$87.93	<b>-\$2.20</b>	\$3.05	\$35.78	\$13.96	\$16.14	-\$1.69	\$31.04	\$9.22	\$11.40	\$	30.17		
10/25	\$85.39	<b>\$1.65</b>	\$90.13	<b>\$0.30</b>	\$4.24	\$38.35	\$15.61	\$17.88	-\$1.85	\$32.26	\$9.52	\$11.79	\$	33.73		
CPL space	Line 1	Change	Line 2	Change												
	0.1150	<b>\$0.0150</b>	\$0.0130	<b>\$0.0037</b>												

**Economic Indicators**

**Commodity Futures**

	Settle	Change		Settle	Change
S&P 500 Futures	4,190	<b>3.75</b>	US NatGas	3.352	<b>0.453</b>
DJIA	32,929	<b>511.37</b>	TTF NatGas	16.53	<b>0.8</b>
EUR/USD	1.0624	<b>0.0013</b>	Gold	1,996	<b>4.2</b>
USD Index	105.93	<b>0.14</b>	Silver	23.28	<b>0.0</b>
US 10 YR YIELD	4.88%	<b>0.04</b>	Copper	411.95	<b>20.000</b>
US 2 YR YIELD	5.03%	<b>0.04</b>	FCO J	1282.75	<b>-1.50</b>
Oil Volatility Index	46.64	<b>-2.63</b>	Wheat	566.00	<b>-7.25</b>
S&P Volatility Index (VIX)	21.27	<b>-1.52</b>	Butane	0.803	<b>0.001</b>
Nikkei 225 Index	30,625	<b>635.00</b>	Propane	0.686	<b>0.000</b>
			Bitcoin	34,765	<b>-105</b>

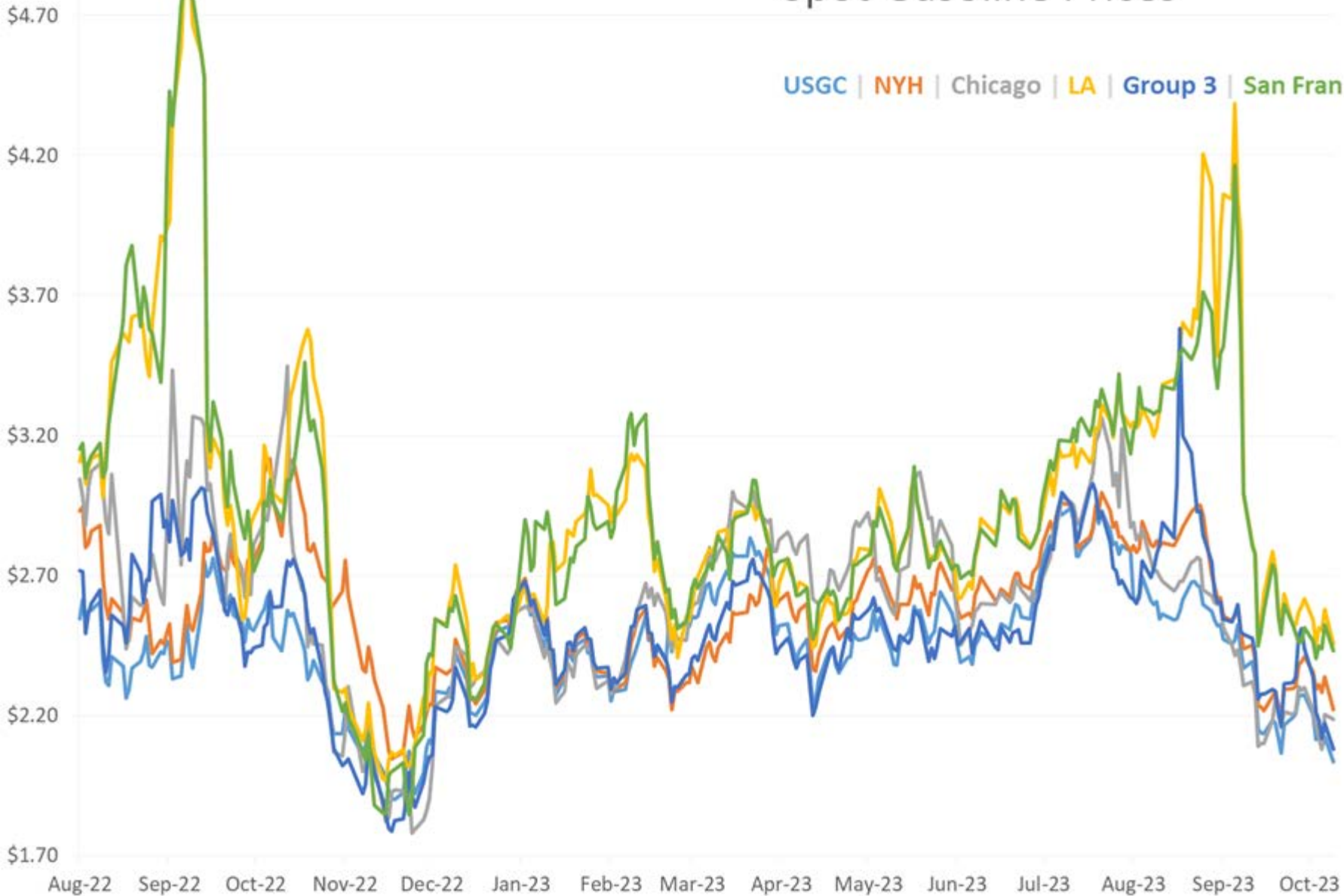
**RINs and Price Drivers**

Current Year Biodiesel RINs			Current Year Ethanol RINs		
	Settle	Net Change		Settle	Net Change
	0.8545	<b>-0.014</b>		0.8500	<b>-0.016</b>
Price Drivers			Price Drivers		
Soybeans	Settle	Net Change	Ethanol	Settle	Net Change
	1282.75	<b>-1.500</b>		2.04	<b>-0.038</b>
Soybean Oil	52.39	<b>-0.070</b>	Com	478.25	<b>-0.250</b>
			Com Crush	0.334	
BOHO Spread	0.963		RVO Estimate		
			Per Gallon	\$ 0.1080	<b>\$(0.0020)</b>
Soy Crush	572.85		Per Barrel	\$ 4.54	<b>\$(0.08)</b>

\*SOURCES: Nymex, CBOT, NYSE, ICE, NASDAQ, CME Group, CBOE. Prices delayed.

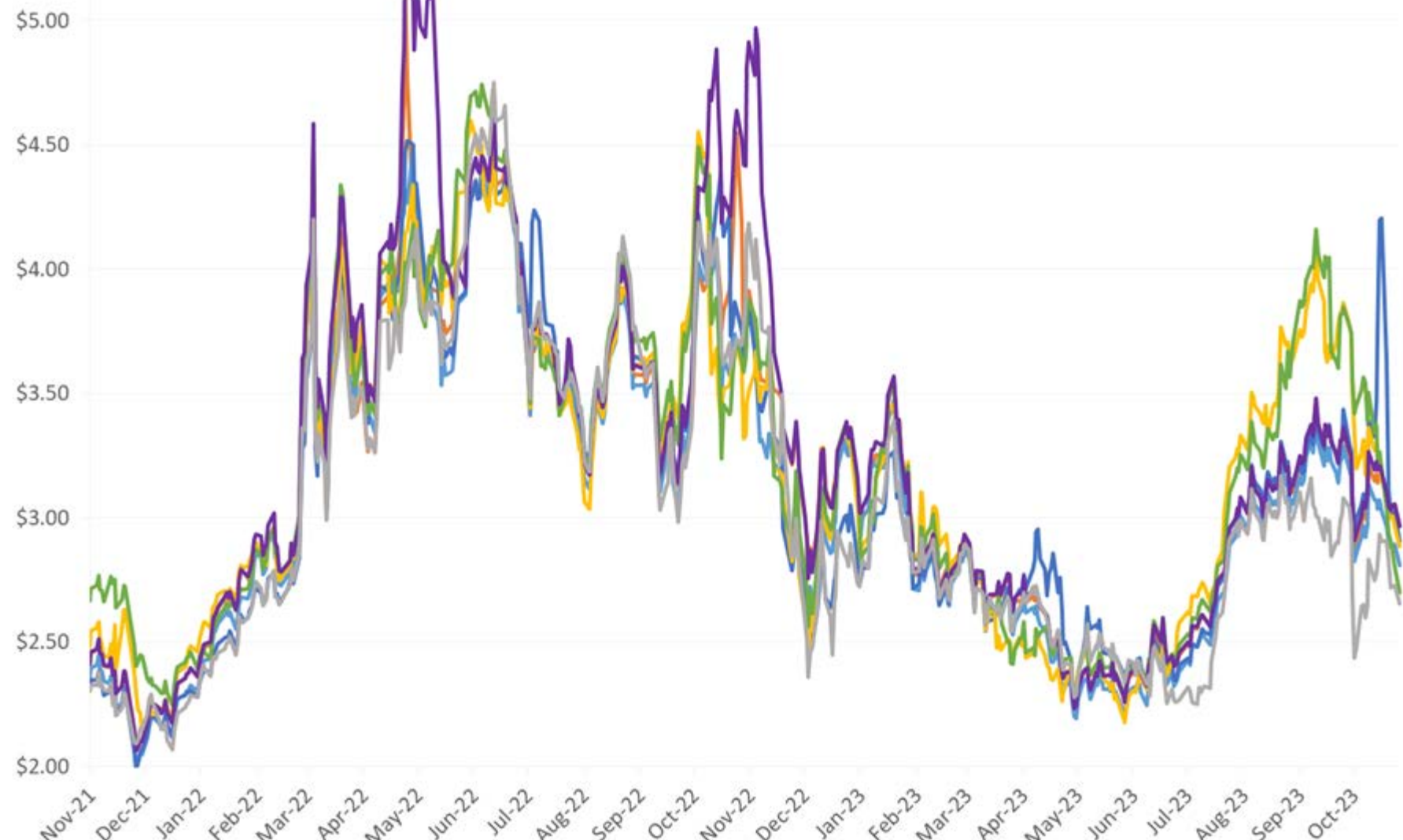
# Spot Gasoline Prices

USGC | NYH | Chicago | LA | Group 3 | San Fran



# Spot Diesel Pricing

USGC | ULSD Futures | LA CARB #2 | Group 3 | San Fran CARB #2 | NYH Barge #2 | Chicago





## Texas Manufacturing Outlook Survey Production Index

Index, seasonally adjusted



Disturbances: **ALL [1]**

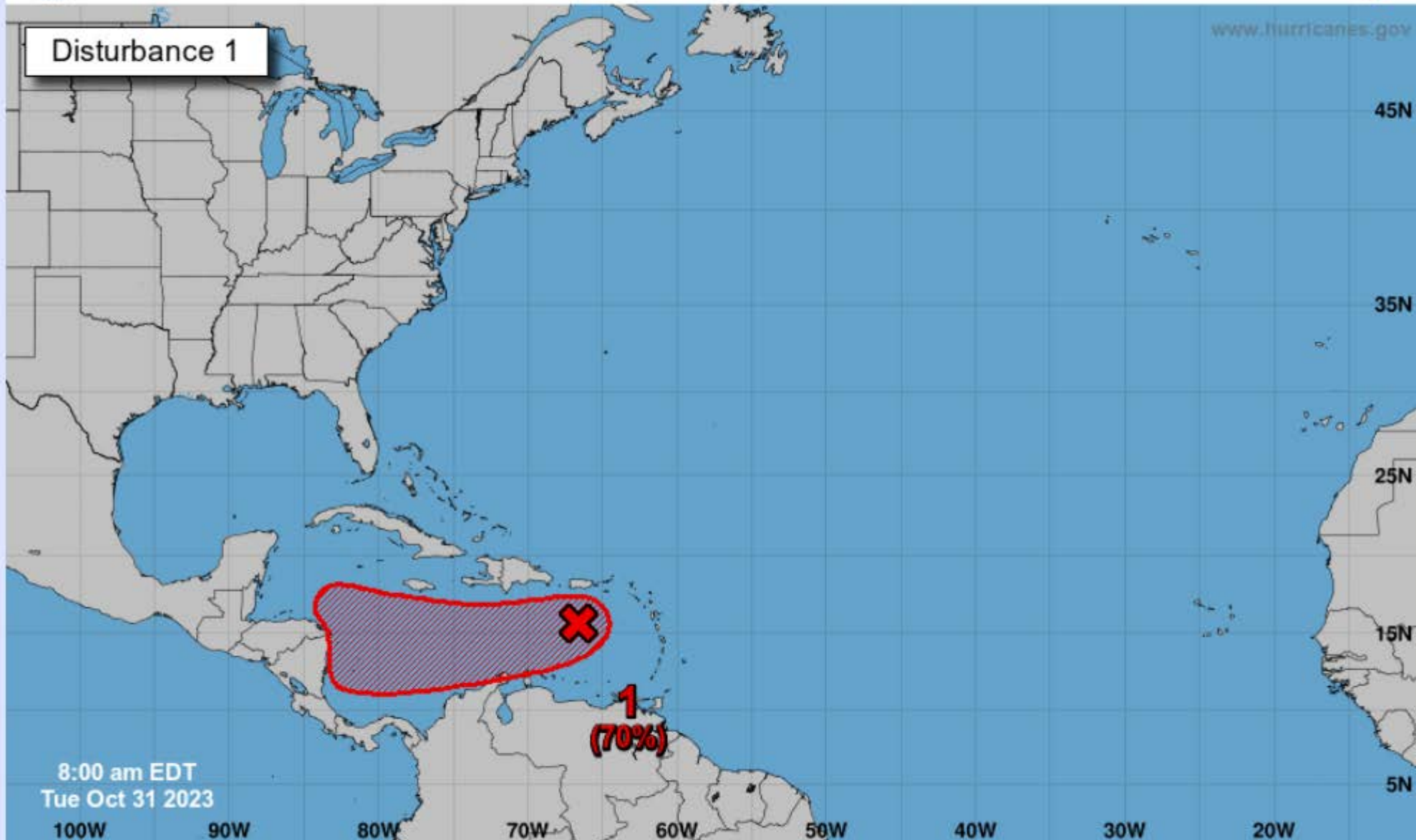


# Seven-Day Graphical Tropical Weather Outlook

National Hurricane Center Miami, Florida



www.hurricanes.gov



Current Disturbances and Seven-Day Cyclone Formation Chance: < 40% 40-60% > 60%

Tropical or Sub-Tropical Cyclone: Depression Storm Hurricane

Post-Tropical Cyclone or Remnants

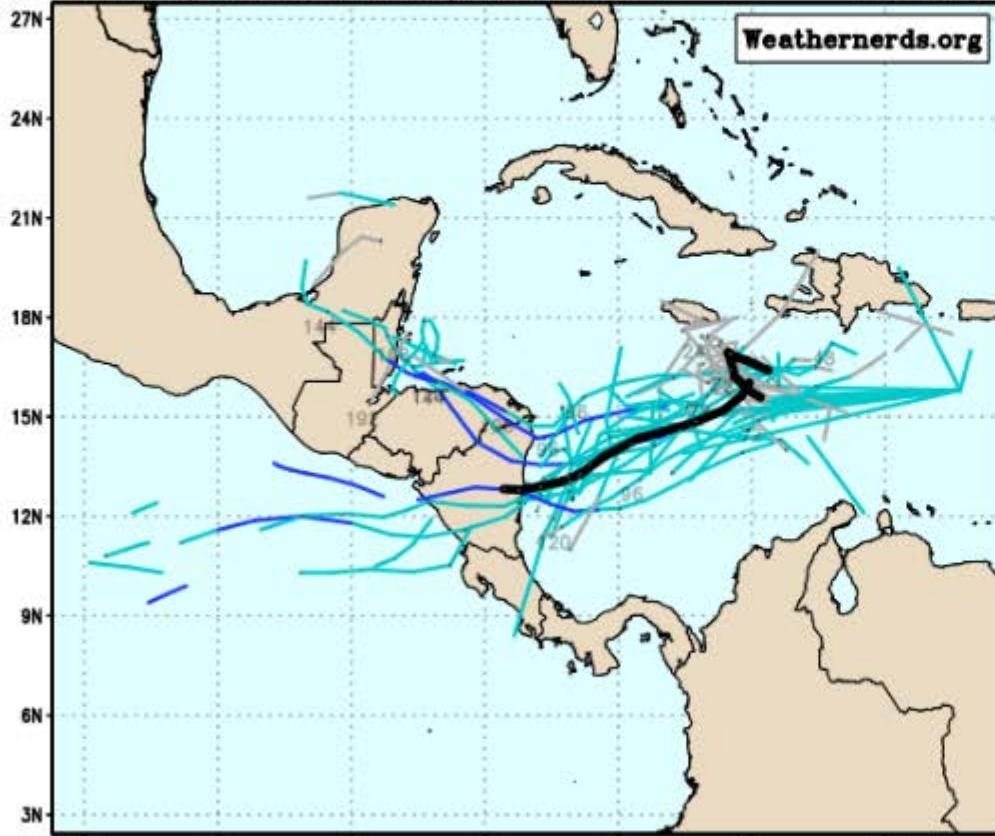
[View 2-Day Graphical Tropical Weather Outlook](#)

# ECMWF Ensemble

Loop

(click for larger image)

ECMWF Ensemble, init: 2023103100, AL97 Invest color = max wind (kt)



# GEFS Ensemble

(click for larger image)

GEFS Ensemble, init: 2023103106, AL97 Invest

