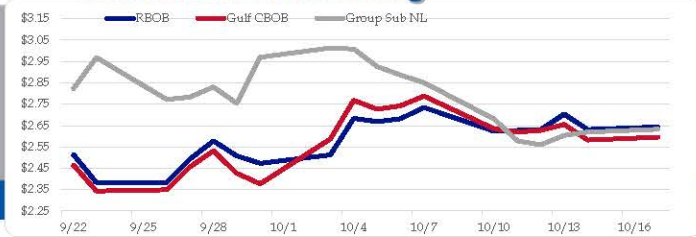


## Gasoline

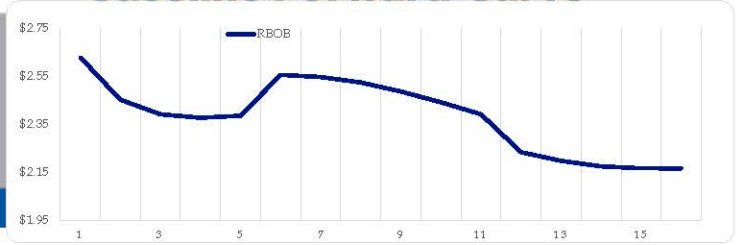
	RBOB	Change	Gulf CBOB	Change	Group Sub NL	Change	Gulf Basis	Group Basis	LA Basis
10/17	\$2.6438	<b>\$0.0129</b>	\$2.5951	<b>\$0.0131</b>	\$2.6323	<b>\$0.0134</b>	\$(0.0492)	\$(0.0118)	\$0.2445
10/14	\$2.6309	<b>-\$0.0725</b>	\$2.5820	<b>-\$0.0728</b>	\$2.6189	<b>\$0.0153</b>	\$(0.0489)	\$(0.0120)	\$0.2460
10/13	\$2.7034	<b>\$0.0731</b>	\$2.6549	<b>\$0.0280</b>	\$2.6036	<b>\$0.0437</b>	\$(0.0485)	\$(0.0998)	\$0.2510
10/12	\$2.6303	<b>\$0.0030</b>	\$2.6269	<b>\$0.0072</b>	\$2.5599	<b>-\$0.0177</b>	\$(0.0034)	\$(0.0704)	\$0.2510
10/11	\$2.6273	<b>\$0.0045</b>	\$2.6196	<b>-\$0.0152</b>	\$2.5776	<b>-\$0.1032</b>	\$(0.0077)	\$(0.0497)	\$0.3245
10/10	\$2.6228	<b>-\$0.1118</b>	\$2.6348	<b>-\$0.1531</b>	\$2.6808	<b>-\$0.1703</b>	\$0.0120	\$0.0580	\$0.4897
10/7	\$2.7346	<b>\$0.0532</b>	\$2.7879	<b>\$0.0454</b>	\$2.8511	<b>-\$0.0356</b>	\$0.0532	\$0.1165	\$0.4546
10/6	\$2.6814	<b>\$0.0129</b>	\$2.7425	<b>\$0.0166</b>	\$2.8866	<b>-\$0.0396</b>	\$0.0610	\$0.2052	\$0.4018

RBOB Technicals		
Indicator	Direction	Resistance
MACD	Overbought	3.1427 Aug High
Stochastics	Bearish	2.7675 Oct High
RSI	Neutral	2.2890 Sep Low
ADX	Bullish	1.8800 Dec Low
Momentum	Neutral	
Bias:	Neutral	

## Gasoline History



## Gasoline Forward Curve

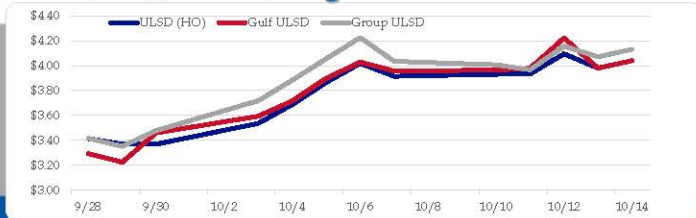


## Diesel

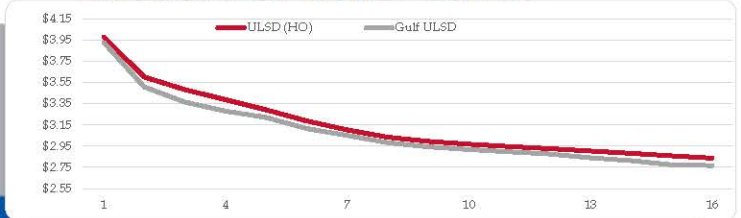
	ULSD (HO)	Change	Gulf ULSD	Change	Group ULSD	Change	Gulf Basis	Group Basis	LA Basis
10/17	\$4.0402	<b>\$0.0600</b>	\$4.0400	<b>\$0.0599</b>	\$4.1311	<b>\$0.0605</b>	\$(0.0007)	\$0.0907	\$(0.3995)
10/14	\$3.9802	<b>-\$0.1146</b>	\$3.9800	<b>-\$0.2414</b>	\$4.0706	<b>-\$0.0846</b>	\$(0.0002)	\$0.0904	\$(0.4005)
10/13	\$4.0948	<b>\$0.1620</b>	\$4.2214	<b>\$0.2431</b>	\$4.1552	<b>\$0.1897</b>	\$0.1266	\$0.0604	\$(0.2505)
10/12	\$3.9328	<b>\$0.0020</b>	\$3.9783	<b>\$0.0141</b>	\$3.9656	<b>-\$0.0403</b>	\$0.0455	\$0.0328	\$0.5345
10/11	\$3.9308	<b>\$0.0161</b>	\$3.9642	<b>\$0.0067</b>	\$4.0059	<b>-\$0.0290</b>	\$0.0334	\$0.0751	\$0.5345
10/10	\$3.9147	<b>-\$0.1040</b>	\$3.9575	<b>-\$0.0699</b>	\$4.0349	<b>-\$0.1893</b>	\$0.0428	\$0.1202	\$0.5345
10/7	\$4.0187	<b>\$0.1538</b>	\$4.0273	<b>\$0.1309</b>	\$4.2242	<b>\$0.1701</b>	\$0.0086	\$0.2055	\$0.5345
10/6	\$3.8649	<b>\$0.1780</b>	\$3.8965	<b>\$0.1818</b>	\$4.0542	<b>\$0.1720</b>			

HO Technicals		
Indicator	Direction	Resistance
MACD	Overbought	4.6444 June High
Stochastics	Overbought	4.1154 Aug High
RSI	Overbought	3.1085 Sep Low
ADX	Bullish	2.9330 March Low
Momentum	Neutral	
Bias:	Neutral	

## Diesel History



## Diesel Forward Curve



## Crude

## Refinery Margins

WTI					Vs WTI				Vs Brent				Group / WCS
	WTI	Change	Brent	Change	Gulf Gas	Gulf Diesel	3/2/1	5/3/2	Gulf Gas	Gulf Diesel	3/2/1	5/3/2	3/2/1
10/14	\$86.05	<b>-\$3.06</b>	\$92.37	<b>-\$2.20</b>	\$19.33	\$78.05	\$38.91	\$42.82	\$13.87	\$72.59	\$33.45	\$37.36	43.05
10/13	\$89.11	<b>\$1.84</b>	\$94.57	<b>\$2.12</b>	\$24.23	\$90.03	\$46.16	\$50.55	\$19.05	\$84.85	\$40.98	\$45.37	43.80
10/12	\$87.27	<b>-\$2.08</b>	\$92.45	<b>-\$1.84</b>	\$20.98	\$77.74	\$39.90	\$43.68	\$16.04	\$72.80	\$34.96	\$38.74	37.84
10/11	\$89.35	<b>-\$1.78</b>	\$94.29	<b>-\$1.90</b>	\$18.89	\$75.37	\$37.72	\$41.48	\$13.83	\$70.31	\$32.66	\$36.42	37.13
10/10	\$91.13	<b>-\$1.51</b>	\$96.19	<b>-\$1.73</b>									
CPL space	Line 1	Change	Line 2	Change									
	0.0330	<b>\$0.0105</b>	-0.0110	<b>-\$0.0003</b>									

### Economic Indicators

### Commodity Futures

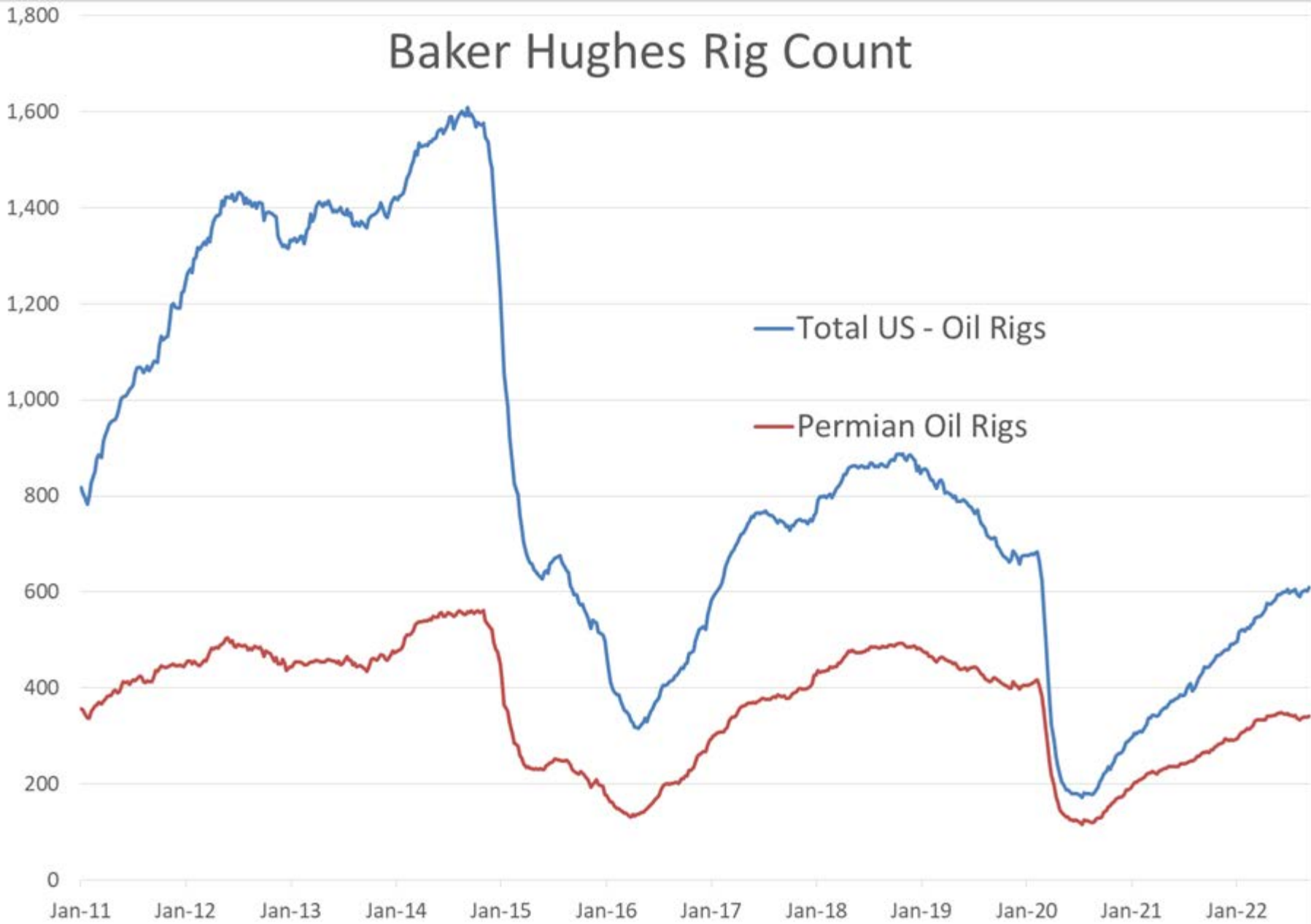
	Settle	Change		Settle	Change
S&P 500 Futures	3,733	<b>51.25</b>	NatGas	6.453	<b>-0.288</b>
DJIA	29,635		Gold	1,642	<b>10.3</b>
EUR/USD	0.9725	<b>0.0048</b>	Silver	18.02	
USD Index	113.20	<b>-0.71</b>	Copper	3.45	<b>-0.001</b>
US 10 YR YIELD	4.00%	<b>0.03</b>	FCOJ	195.70	<b>2.45</b>
US 2 YR YIELD	4.48%	<b>0.01</b>	Wheat	859.75	<b>8.50</b>
Oil Volatility Index	50.52	<b>-0.22</b>	Butane	0.955	<b>-0.030</b>
S&P Volatility Index (VIX)	31.94	<b>0.08</b>	Propane	0.832	<b>-0.021</b>
Nikkei 225 Index	26,620	<b>280.00</b>	Bitcoin	38,855	<b>465</b>

## RINs and Price Drivers

Current Year Biodiesel RINs			Current Year Ethanol RINs		
	Settle	Net Change		Settle	Net Change
	1.8150	<b>0.015</b>		1.6150	<b>0.018</b>
Price Drivers			Price Drivers		
Soybeans	1383.75	<b>3.500</b>	Ethanol	2.16	<b>0.000</b>
Soybean Oil	65.30	<b>0.910</b>	Corn	689.75	<b>-0.750</b>
BOHO Spread	0.917		Corn Crush	-0.302	
Soy Crush	713.51		RVO Estimate		
			Per Gallon	\$ 0.1950	<b>\$ 0.0020</b>
			Per Barrel	\$ 8.19	<b>\$ 0.08</b>

\*SOURCES: Nymex, CBOT, NYSE, ICE, NASDAQ, CME Group, CBOE. Prices delayed.

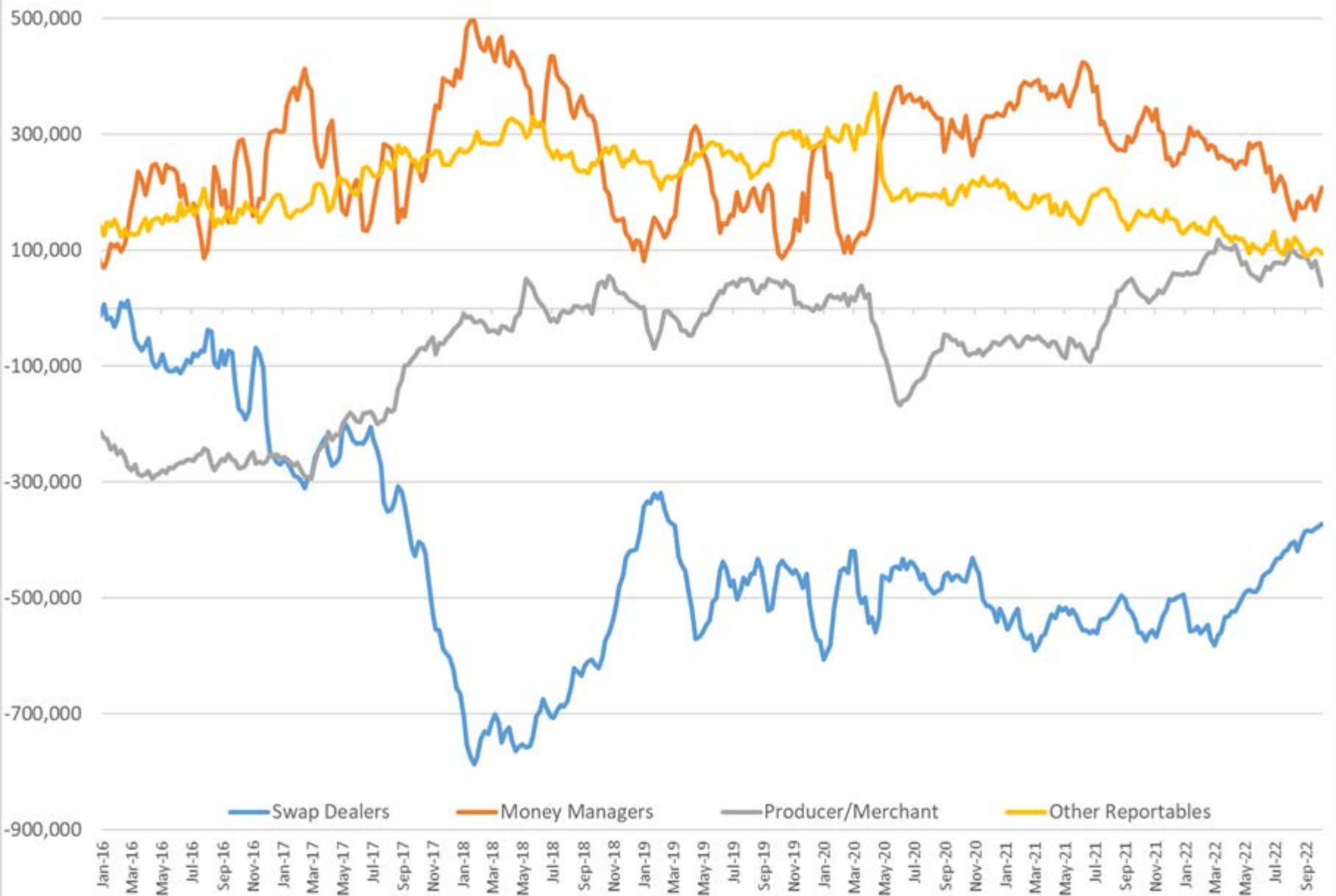
# Baker Hughes Rig Count



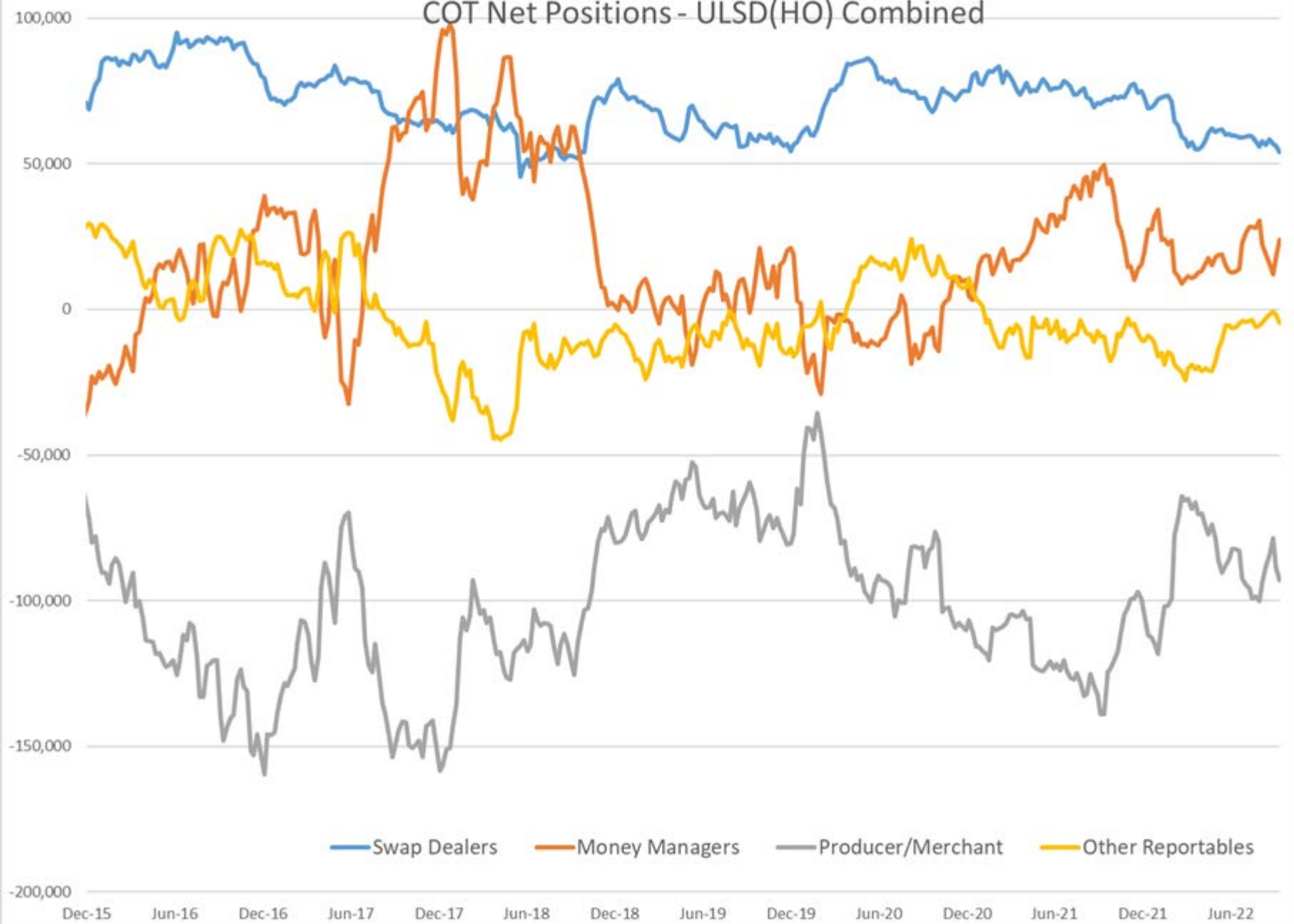
## Commitment of Traders Report - Money Manager Recap

Date of compilation	HO				WTI				RBOB				Brent				LS Gasoil			
	Managed Long Positions	HO Managed Short Positions	HO Open Interest	ULSD Managed Net Position	Managed Long Positions	WTI Managed Short Positions	WTI Open Interest	WTI Managed Net Position	Managed Long Positions	RBOB Managed Short Positions	RBOB Open Interest	RBOB Managed Net Position	Managed Long Positions	Brent Managed Short Positions	Brent Open Interest	Brent Managed Net Position	Managed Long Positions	LS Gasoil Managed Short Positions	LS Gasoil Open Interest	LS Gasoil Managed Net Position
10/11/2022	33,728	9,765	282,239	23,963	232,159	23,493	2,144,029	208,666	57,324	4,499	259,846	52,825	236,737	35,574	2,519,269	201,163	73,147	11,062	509,364	62,085
10/4/2022	30,304	12,757	289,336	17,547	219,497	30,136	2,109,645	189,361	62,330	6,660	244,940	55,670	226,784	41,452	2,414,742	185,332	68,787	16,752	502,835	52,035
1 Week	3,424	(2,992)	(7,097)	6,416	12,662	(6,643)	34,384	19,305	(5,006)	(2,161)	14,906	(2,845)	9,953	(5,878)	104,527	15,831	4,360	(5,690)	6,529	10,050
% Change	11.3%	-23.5%	-2.5%	36.6%	5.8%	-22.0%	1.6%	10.2%	-8.0%	-32.4%	6.1%	-5.1%	4.4%	-14.2%	4.3%	8.5%	6.3%	-34.0%	1.3%	19.3%
1 Year	(26,320)	(569)	(166,287)	(25,751)	(138,582)	(20,643)	(664,443)	(117,939)	(17,754)	(10,114)	(134,557)	(7,640)	(262,792)	(38,192)	(715,933)	(224,600)	(54,548)	880	(418,848)	(55,428)
% Change	-44%	-6%	-37%	-52%	-37%	-47%	-24%	-36%	-24%	-69%	-34%	-13%	-53%	-52%	-22%	-53%	-43%	9%	-45%	-47%

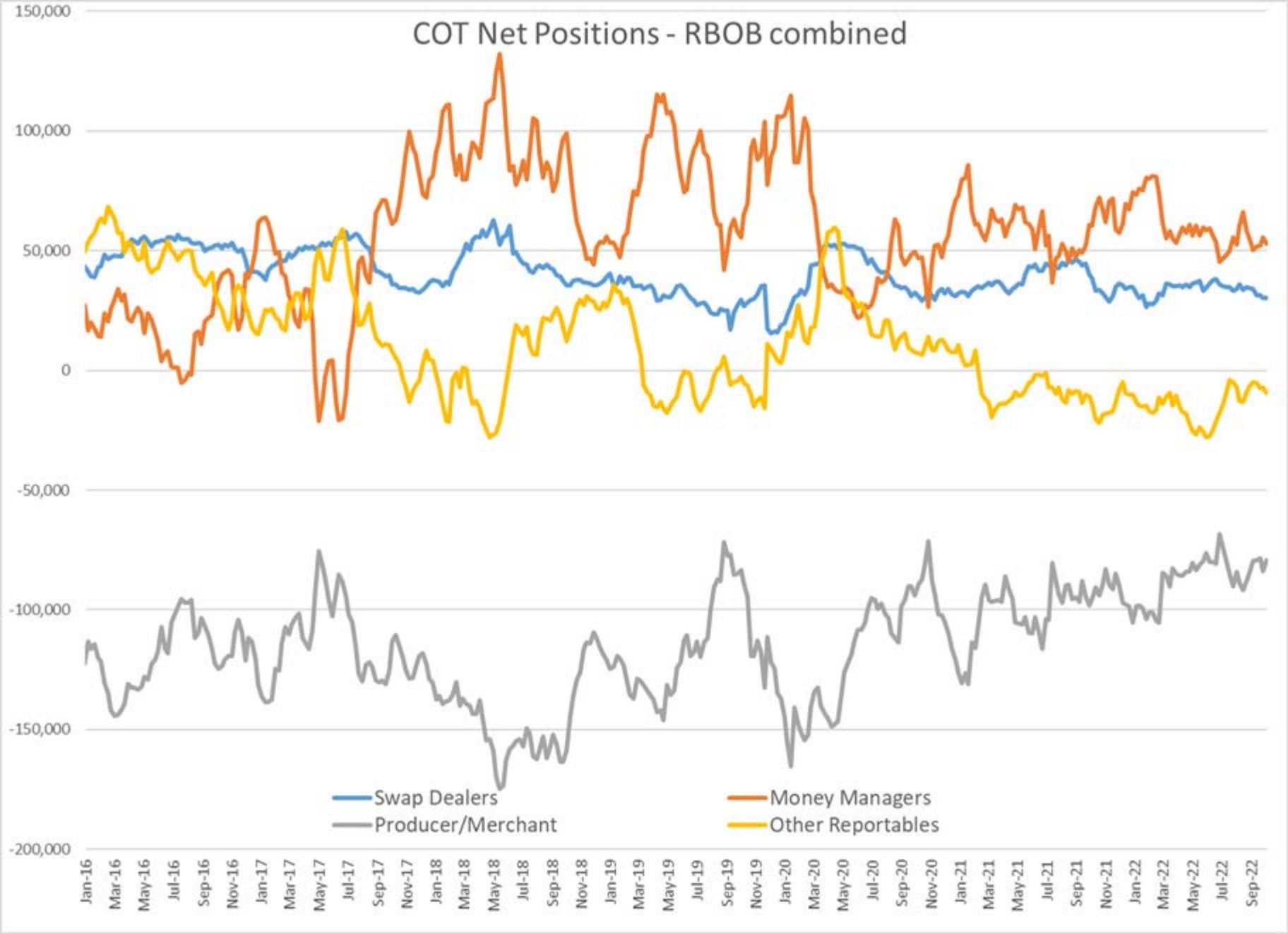
# COT Net Positions - WTI combined



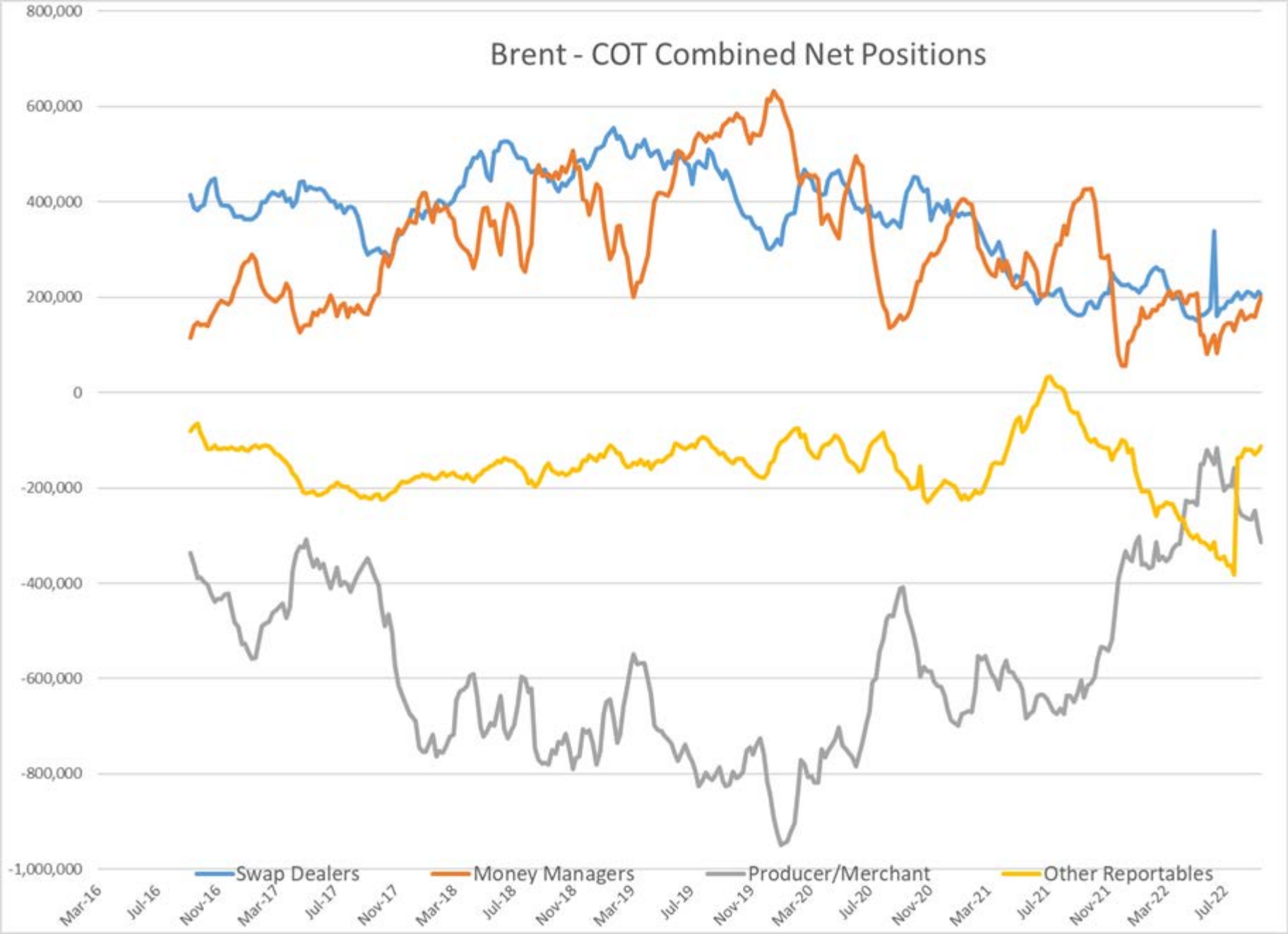
# COT Net Positions - ULSD(HO) Combined



# COT Net Positions - RBOB combined



# Brent - COT Combined Net Positions



# LS Gasoil COT Combined Net Positions

