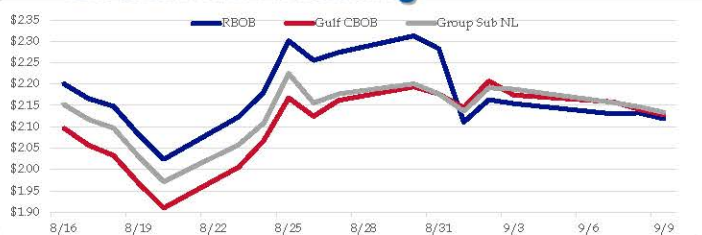


Gasoline

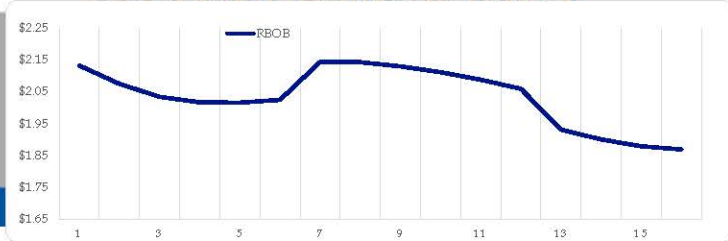
	RBOB	Change	Gulf CBOB	Change	Group Sub NL	Change	Gulf Basis	Group Basis	LA Basis
9/9	\$2.1186	-\$0.0135	\$2.1280	-\$0.0130	\$2.1334	-\$0.0134	\$ 0.0089	\$ 0.0145	\$ 0.0660
9/8	\$2.1321	\$0.0021	\$2.1410	-\$0.0171	\$2.1468	-\$0.0095	\$ 0.0089	\$ 0.0147	\$ 0.0655
9/7	\$2.1300	-\$0.0240	\$2.1580	-\$0.0161	\$2.1563	-\$0.0317	\$ 0.0280	\$ 0.0263	\$ 0.1355
9/3	\$2.1540	-\$0.0095	\$2.1741	-\$0.0330	\$2.1880	-\$0.0032	\$ 0.0201	\$ 0.0339	\$ 0.1505
9/2	\$2.1635	\$0.0526	\$2.2071	\$0.0626	\$2.1912	\$0.0651	\$ 0.0436	\$ 0.0277	\$ 0.1405
9/1	\$2.1109	-\$0.1717	\$2.1445	-\$0.0322	\$2.1361	-\$0.0410	\$ 0.0336	\$ 0.0252	\$ 0.1505
8/31	\$2.2826	-\$0.0301	\$2.1767	-\$0.0169	\$2.1771	-\$0.0233	\$ (0.1059)	\$ (0.1055)	\$ 0.0248
8/30	\$2.3127	\$0.0385	\$2.1936	\$0.0317	\$2.2004	\$0.0235	\$ (0.1191)	\$ (0.1123)	\$ 0.0221

RBOB Technicals		
Indicator	Direction	Resistance
MACD	Neutral	3.1520 2014 High
Stochastics	Bearish	2.3526 2021 High
RSI	Overbought	2.0051 Aug Low
ADX	Bullish	1.8891 March Low
Momentum	Bullish	
Bias:	Neutral	

Gasoline History



Gasoline Forward Curve

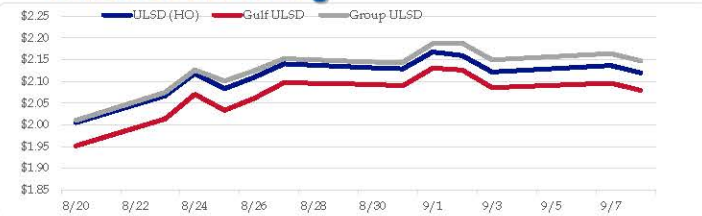


Diesel

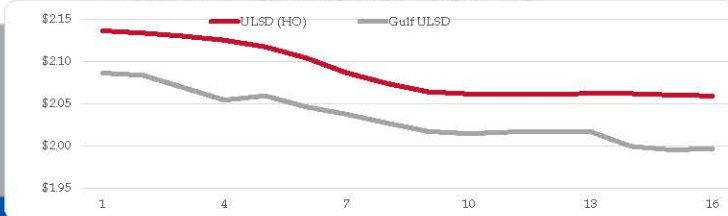
	ULSD (HO)	Change	Gulf ULSD	Change	Group ULSD	Change	Gulf Basis	Group Basis	LA Basis
9/9	\$2.1196	-\$0.0168	\$2.0793	-\$0.0167	\$2.1472	-\$0.0171	\$ (0.0409)	\$ 0.0274	\$ 0.0755
9/8	\$2.1364	\$0.0148	\$2.0960	\$0.0105	\$2.1643	\$0.0148	\$ (0.0404)	\$ 0.0279	\$ 0.0745
9/7	\$2.1216	-\$0.0378	\$2.0854	-\$0.0407	\$2.1495	-\$0.0384	\$ (0.0362)	\$ 0.0279	\$ 0.0795
9/3	\$2.1594	-\$0.0083	\$2.1262	-\$0.0045	\$2.1879	\$0.0013	\$ (0.0333)	\$ 0.0285	\$ 0.0795
9/2	\$2.1677	\$0.0388	\$2.1306	\$0.0410	\$2.1866	\$0.0425	\$ (0.0371)	\$ 0.0189	\$ 0.0895
9/1	\$2.1289	-\$0.0021	\$2.0897	-\$0.0031	\$2.1441	-\$0.0004	\$ (0.0392)	\$ 0.0152	\$ 0.0895
8/31	\$2.1310	-\$0.0093	\$2.0928	-\$0.0043	\$2.1445	-\$0.0076	\$ (0.0382)	\$ 0.0135	\$ 0.0887
8/30	\$2.1403	\$0.0311	\$2.0971	\$0.0360	\$2.1521	\$0.0275			

HO Technicals		
Indicator	Direction	Resistance
MACD	Neutral	2.4500 2018 High
Stochastics	Overbought	2.2101 2021 High
RSI	Overbought	1.9553 June Low
ADX	Bearish	1.7295 March Low
Momentum	Bullish	
Bias:	Neutral	

Diesel History



Diesel Forward Curve



Crude

	WTI	Change	Brent	Change
9/9	\$68.82	-\$0.48	\$72.37	-\$0.23
9/8	\$69.30	\$0.95	\$72.60	\$0.91
9/7	\$68.35	-\$0.94	\$71.69	-\$0.53
9/3	\$69.29	-\$0.70	\$72.22	-\$0.39
9/2	\$69.99	\$1.40	\$72.61	-\$0.42
Line 1	Change	Line 2	Change	
CPL space	-0.0058	-\$0.0023	-\$0.0060	-\$0.0003

Refinery Margins

				Vs WTI				Vs Brent				Group / WCS
				Gulf Gas	Gulf Diesel	3/2/1	5/3/2	Gulf Gas	Gulf Diesel	3/2/1	5/3/2	3/2/1
9/9	\$68.82	-\$0.48	\$72.37	\$20.62	\$18.73	\$19.99	\$19.86	\$17.32	\$15.43	\$16.69	\$16.56	22.06
9/8	\$69.30	\$0.95	\$72.60	\$22.29	\$19.24	\$21.27	\$21.07	\$18.95	\$15.90	\$17.93	\$17.73	22.12
9/7	\$68.35	-\$0.94	\$71.69	\$22.02	\$20.01	\$21.35	\$21.22	\$19.09	\$17.08	\$18.42	\$18.29	22.60
9/3	\$69.29	-\$0.70	\$72.22	\$22.71	\$19.50	\$21.64	\$21.42	\$20.09	\$16.88	\$19.02	\$18.80	21.98

Economic Indicators

	Settle	Change
S&P 500 Futures	4,196	-6.75
DJIA	35,031	
EUR/USD	1.1826	-0.0003
USD Index	92.65	-0.05
US 10 YR YIELD	1.35%	-0.03
US 2 YR YIELD	0.22%	0.00
Oil Volatility Index	32.91	-1.00
S&P Volatility Index (VIX)	18.14	-0.18
Nikkei 225 Index	29,965	165.00

Commodity Futures

	Settle	Change
NatGas	4.914	0.346
Gold	1,791	5.7
Silver	24.01	0.2
Copper	4.23	0.050
FCOJ	143.10	
Wheat	698.25	-9.00
Butane	1.407	-0.031
Propane	1.189	0.002
Bitcoin	46,520	-650

RINs and Price Drivers

Current Year Biodiesel RINs			Current Year Ethanol RINs		
	Settle	Net Change		Settle	Net Change
	1.5900	0.010		1.3825	0.013
Price Drivers			Price Drivers		
	Settle	Net Change		Settle	Net Change
Soybeans	1270.75		Ethanol	2.37	0.020
Soybean Oil	57.45		Com	498.25	-3.250
BOHO Spread	2.172		Com Crush	0.591	
Soy Crush	626.67		RVO Estimate		
			Per Gallon	\$ 0.1710	\$ 0.0010
			Per Barrel	\$ 7.18	\$ 0.04

*SOURCES: Nymex, CBOT, NYSE, ICE, NASDAQ, CME Group, CBOE. Prices delayed.

Disclaimer: The information contained herein is derived from multiple sources believed to be reliable. However, this information is not guaranteed as to its accuracy or completeness. No responsibility is assumed for use of this material and no express or implied warranties or guarantees are made. This material and any view or comment expressed herein are provided for informational purposes only and should not be construed in any way as an inducement or recommendation to buy or sell products, commodity futures or options contracts.

Disturbances: ALL [1] [2]

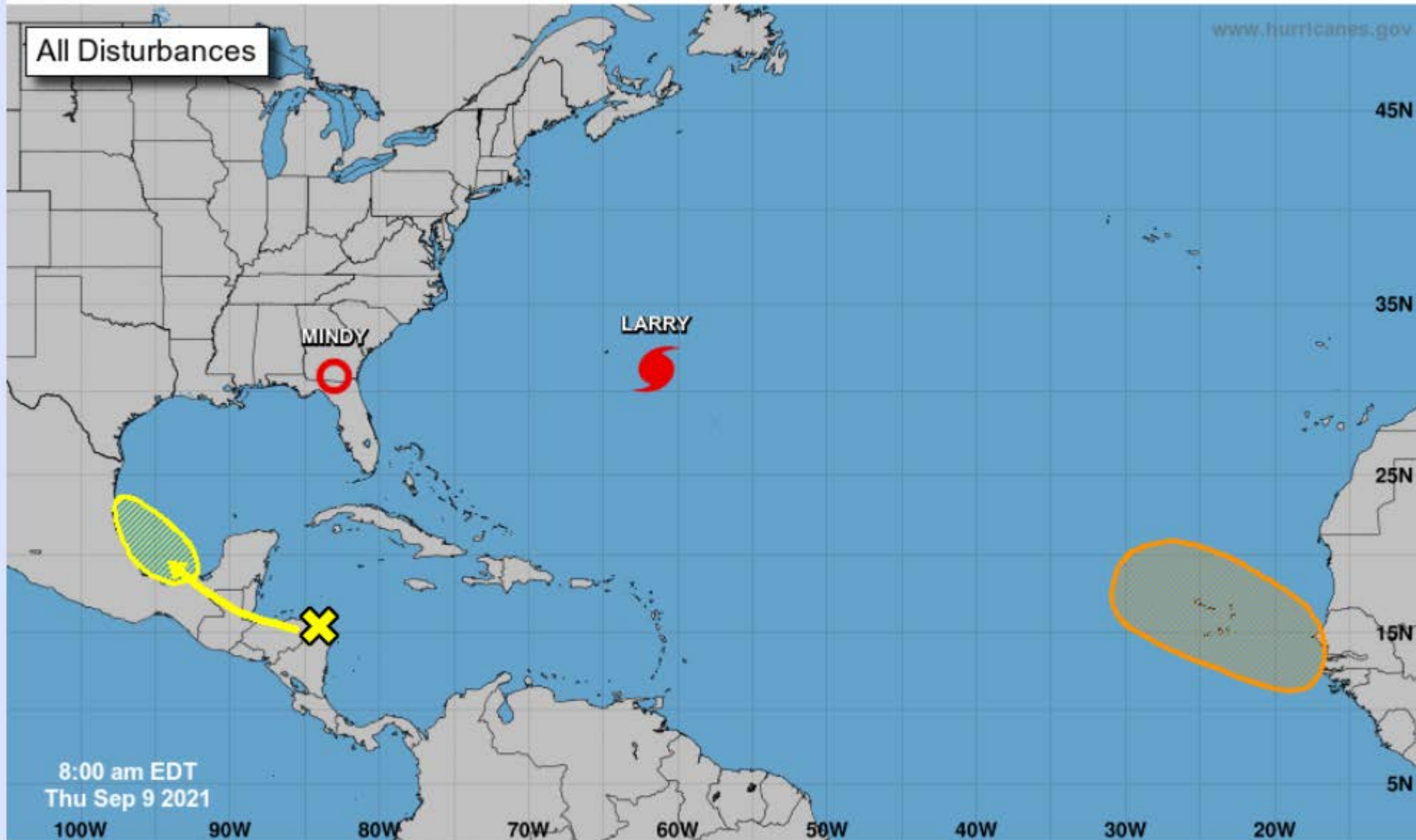


Five-Day Graphical Tropical Weather Outlook

National Hurricane Center Miami, Florida



www.hurricanes.gov



Current Disturbances and Five-Day Cyclone Formation Chance: < 40% 40-60% > 60%

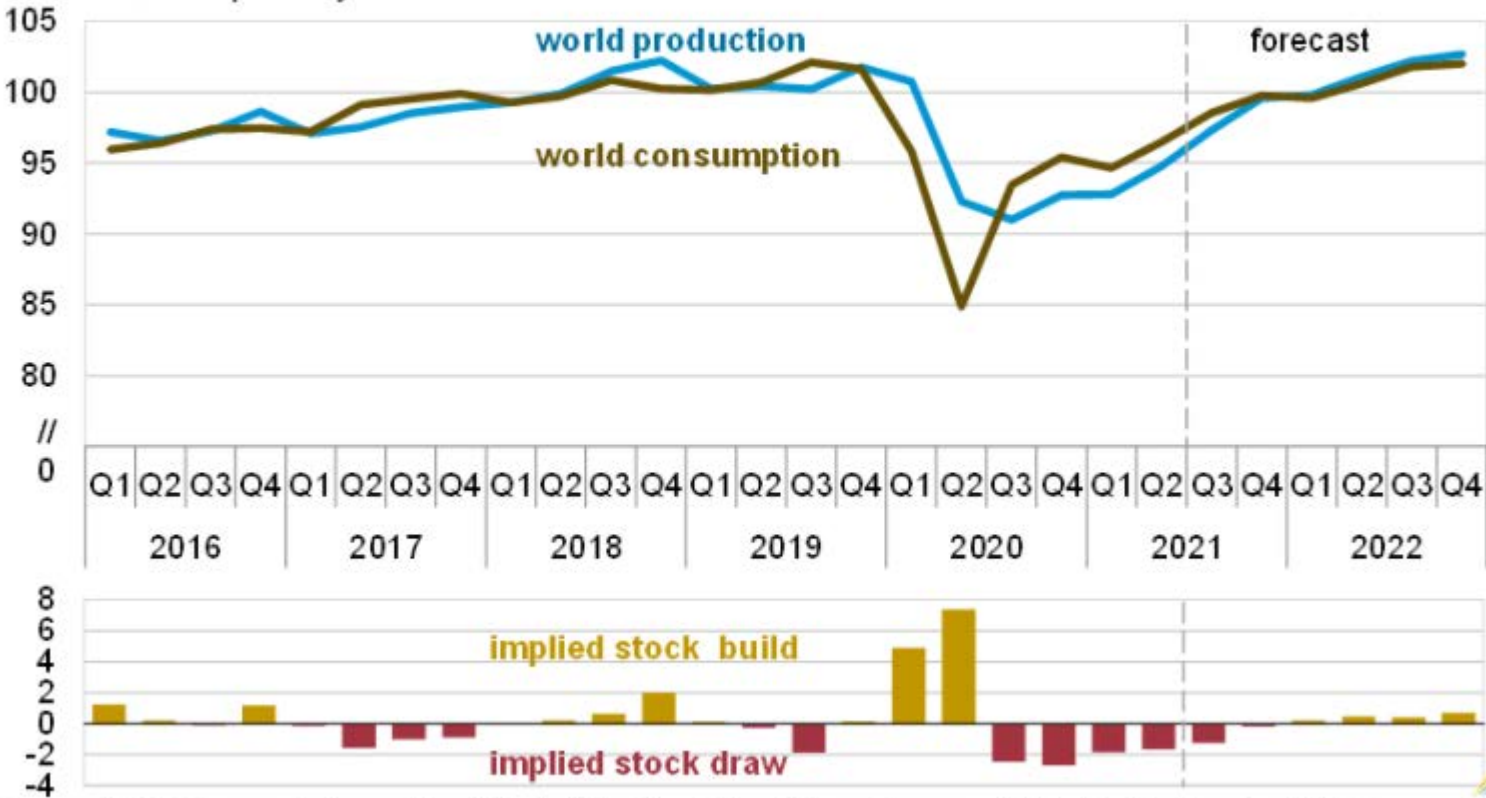
Tropical or Sub-Tropical Cyclone: Depression Storm Hurricane

 Post-Tropical Cyclone or Remnants

[View 2-Day Graphical Tropical Weather Outlook](#)

World liquid fuels production and consumption balance

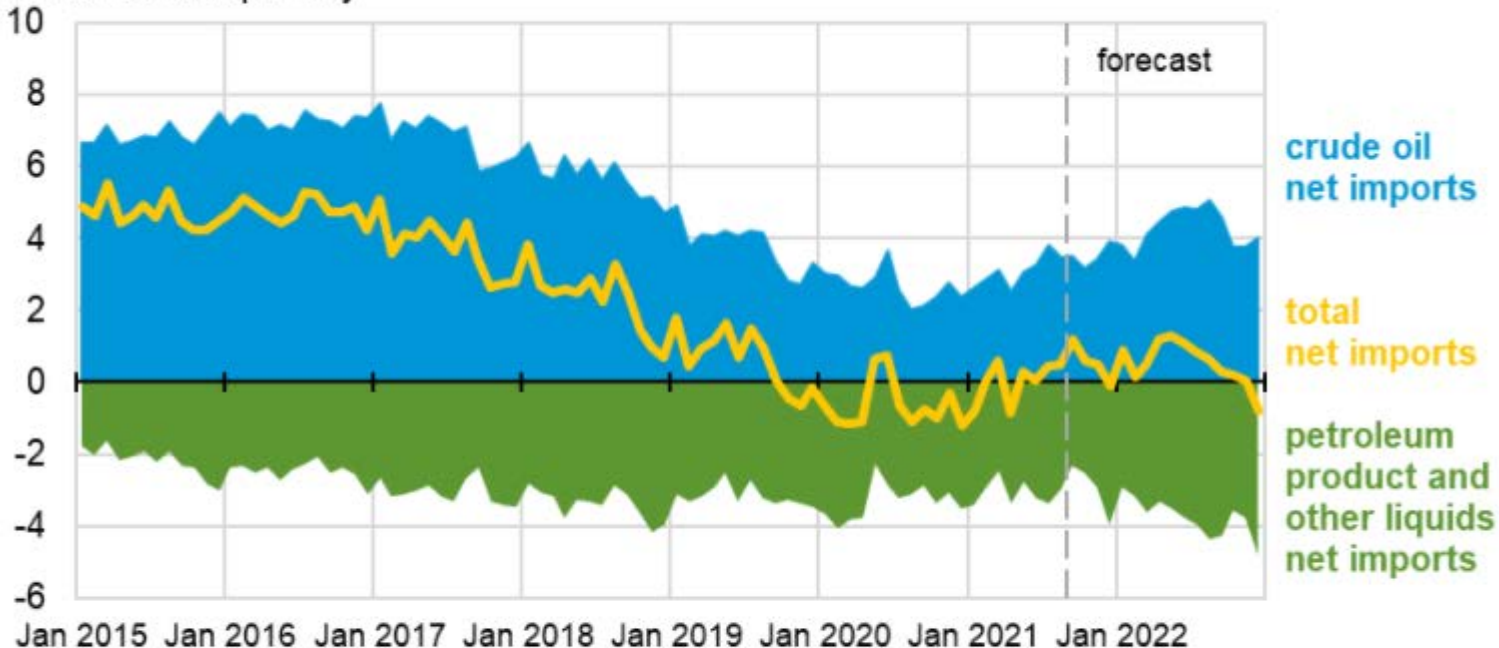
million barrels per day



Source: U.S. Energy Information Administration, Short-Term Energy Outlook, September 2021

U.S. net imports of crude oil and liquid fuels

million barrels per day



Note: Petroleum product and other liquids include: gasoline, distillate fuels, hydrocarbon gas liquids, jet fuel, residual fuel oil, unfinished oils, other hydrocarbons/oxygenates, and other oils.

Source: U.S. Energy Information Administration, Short-Term Energy Outlook, September 2021

Ethanol Spot Prices

