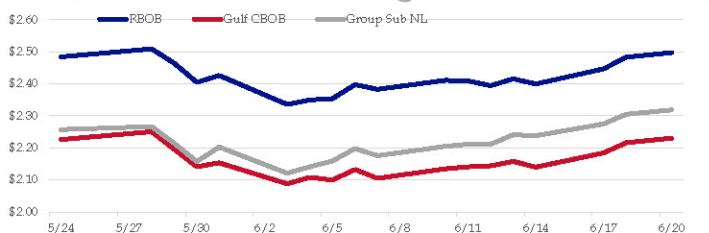


Gasoline

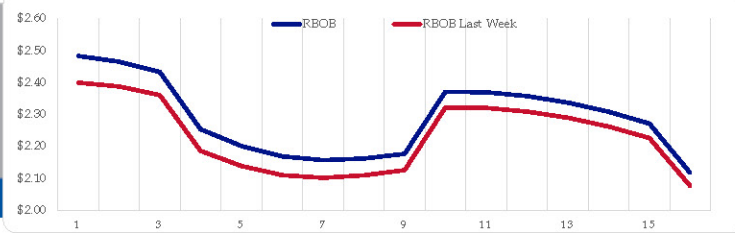
	RBOB	Change	Gulf CBOB	Change	Group Sub NL	Change	Gulf Basis	Group Basis	LA Basis
6/20	\$2.4970	\$0.0138	\$2.2299	\$0.0141	\$2.3184	\$0.0133	\$ (0.2676)	\$ (0.1789)	\$ 0.0345
6/18	\$2.4832	\$0.0363	\$2.2158	\$0.0312	\$2.3051	\$0.0305	\$ (0.2674)	\$ (0.1781)	\$ 0.0360
6/17	\$2.4469	\$0.0473	\$2.1846	\$0.0447	\$2.2746	\$0.0366	\$ (0.2623)	\$ (0.1723)	\$ 0.0210
6/14	\$2.3996	-\$0.0160	\$2.1399	-\$0.0180	\$2.2380	-\$0.0030	\$ (0.2597)	\$ (0.1617)	\$ 0.0210
6/13	\$2.4156	\$0.0212	\$2.1579	\$0.0140	\$2.2409	\$0.0298	\$ (0.2577)	\$ (0.1747)	\$ 0.0095
6/12	\$2.3944	-\$0.0146	\$2.1439	\$0.0030	\$2.2112	-\$0.0004	\$ (0.2505)	\$ (0.1833)	\$ (0.0503)
6/11	\$2.4089	-\$0.0020	\$2.1409	\$0.0064	\$2.2116	\$0.0067	\$ (0.2680)	\$ (0.1973)	\$ (0.0604)
6/10	\$2.4109	\$0.0283	\$2.1345	\$0.0296	\$2.2049	\$0.0296	\$ (0.2765)	\$ (0.2061)	\$ (0.0932)

RBOB Technicals		
Indicator	Direction	Resistance
MACD	Neutral	2.9859 Sep High
Stochastics	Overbought	2.8516 2024 High
RSI	Neutral	2.2985 June Low
ADX	Bullish	2.1365 February Low
Momentum	Bullish	
Bias:	Neutral	

Gasoline History



Gasoline Forward Curve

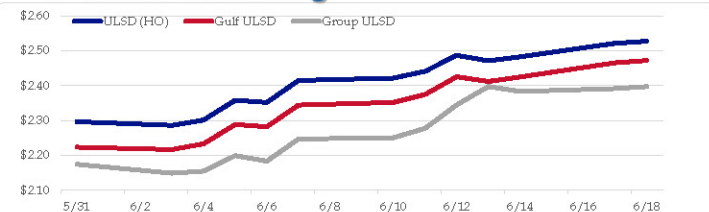


Diesel

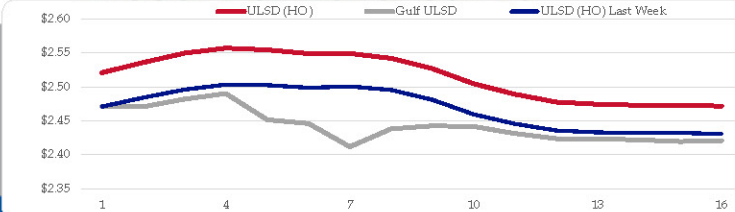
	ULSD (HO)	Change	Gulf ULSD	Change	Group ULSD	Change	Gulf Basis	Group Basis	LA Basis
6/20	\$2.5269	\$0.0061	\$2.4717	\$0.0061	\$2.3969	\$0.0057	\$ (0.0562)	\$ (0.1302)	\$ 0.0305
6/18	\$2.5208	\$0.0383	\$2.4651	\$0.0406	\$2.3912	\$0.0083	\$ (0.0557)	\$ (0.1296)	\$ 0.0295
6/17	\$2.4825	\$0.0119	\$2.4246	\$0.0130	\$2.3829	-\$0.0142	\$ (0.0579)	\$ (0.0996)	\$ (0.0005)
6/14	\$2.4706	-\$0.0162	\$2.4116	-\$0.0136	\$2.3971	\$0.0527	\$ (0.0590)	\$ (0.0735)	\$ (0.0005)
6/13	\$2.4868	\$0.0460	\$2.4252	\$0.0507	\$2.3444	\$0.0672	\$ (0.0616)	\$ (0.1424)	\$ (0.0005)
6/12	\$2.4408	\$0.0196	\$2.3746	\$0.0229	\$2.2773	\$0.0267	\$ (0.0662)	\$ (0.1636)	\$ 0.0245
6/11	\$2.4213	\$0.0066	\$2.3517	\$0.0076	\$2.2506	\$0.0041	\$ (0.0696)	\$ (0.1708)	\$ 0.0445
6/10	\$2.4147	\$0.0630	\$2.3440	\$0.0620	\$2.2465	\$0.0632			

HO Technicals		
Indicator	Direction	Resistance
MACD	Neutral	3.0476 Nov High
Stochastics	Overbought	2.9735 Feb High
RSI	Neutral	2.2566 June Low
ADX	Bullish	2.1500 April 2023 Low
Momentum	Bullish	
Bias:	Neutral	

Diesel History



Diesel Forward Curve



Crude

WTI					Vs WTI				Vs Brent				Group / WCS	
	WTI	Change	Brent	Change	Gulf Gas	Gulf Diesel	3/2/1	5/3/2	Gulf Gas	Gulf Diesel	3/2/1	5/3/2		3/2/1
6/20	\$81.63	\$0.06	\$85.35	\$0.02	\$11.49	\$21.96	\$14.98	\$15.68	\$7.73	\$18.20	\$11.22	\$11.92	\$	29.69
6/18	\$81.57	\$1.24	\$85.33	\$1.08	\$11.42	\$21.50	\$14.78	\$15.45	\$7.50	\$17.58	\$10.86	\$11.53	\$	28.72
6/17	\$80.33	\$1.88	\$84.25	\$1.63	\$11.43	\$22.84	\$15.23	\$15.99	\$7.26	\$18.67	\$11.06	\$11.82	\$	29.77
6/14	\$78.45	-\$0.17	\$82.62	-\$0.13	\$12.01	\$23.24	\$15.75	\$16.50	\$7.88	\$19.11	\$11.62	\$12.37	\$	28.95
6/13	\$78.62	\$0.12	\$82.75	\$0.83	\$11.54	\$21.23	\$14.77	\$15.42	\$8.12	\$17.81	\$11.35	\$12.00	\$	27.29
CPL	Line 1	Change	Line 2	Change										
space	0.0863	\$0.0062	-\$0.0183	-\$0.0026										

Refinery Margins

RINs and Price Drivers

Current Year Bio RINs (D4)			Current Year Ethanol RINs (D6)		
	Settle	Net Change		Settle	Net Change
	0.5570	0.008		0.5560	0.010
Price Drivers			Price Drivers		
	Settle	Net Change		Settle	Net Change
Soybeans	1174.00	-\$2.50	Ethanol	1.97	0.045
Soybean Oil	44.30	0.120	Com	450.00	-\$3.750
BOHO Spread	0.802		Com Crush	0.363	
Soy Crush	483.58		RVO Estimate		
			Per Gallon	\$ 0.0750	\$ 0.0010
			Per Barrel	\$ 3.15	\$ 0.04

*SOURCES: Nymex, CBOT, NYSE, ICE, NASDAQ, CME Group, CBOE. Prices delayed.

Disclaimer: The information contained herein is derived from multiple sources believed to be reliable. However, this information is not guaranteed as to its accuracy or completeness. No responsibility is assumed for use of this material and no express or implied warranties or guarantees are made. This material and any view or comment expressed herein are provided for informational purposes only and should not be construed in any way as an inducement or recommendation to buy or sell products, commodity futures or options contracts.

Central Pacific

Eastern Pacific

Atlantic

Disturbances: ALL [1] [2]



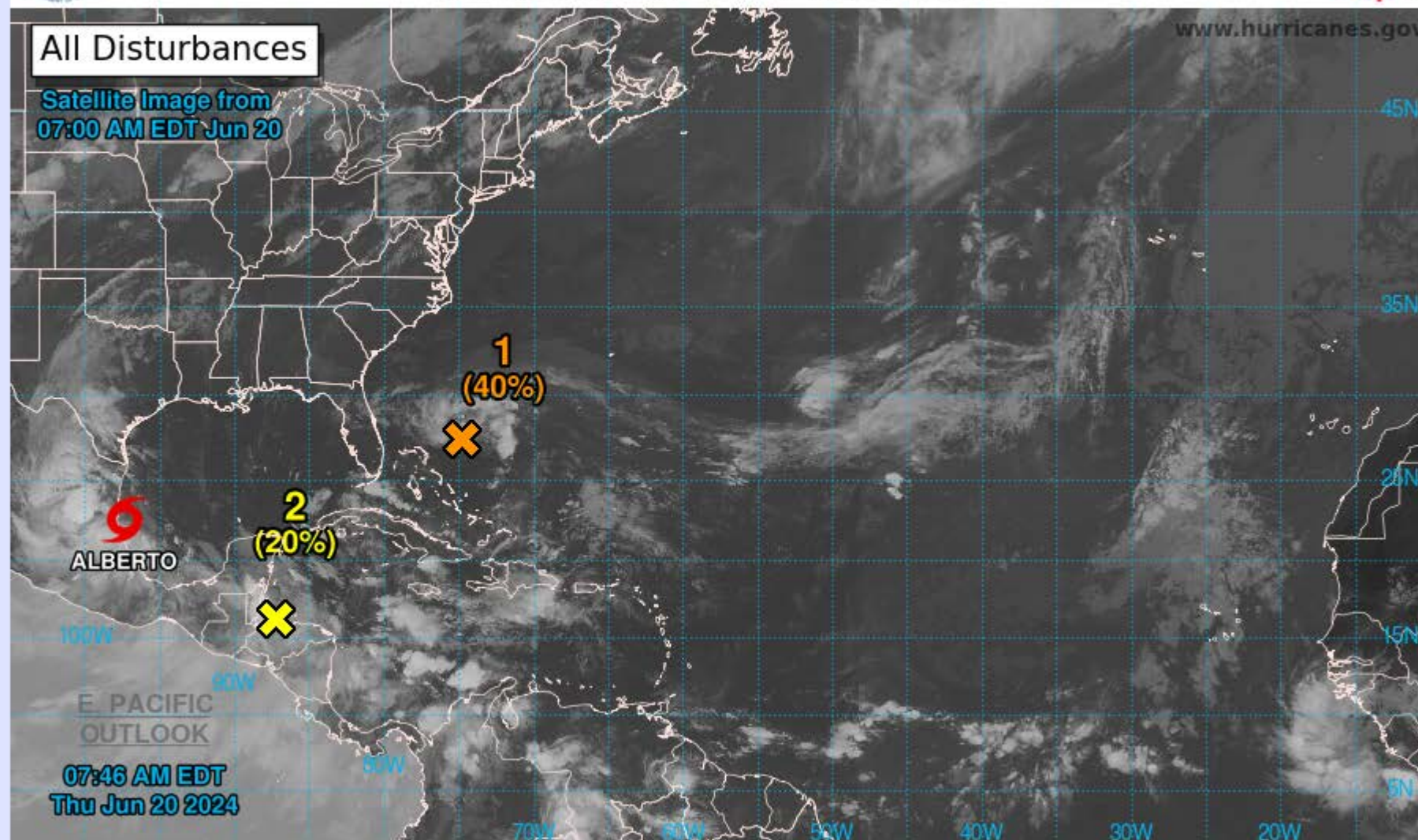
Two-Day Graphical Tropical Weather Outlook

National Hurricane Center Miami, Florida



All Disturbances

Satellite Image from
07:00 AM EDT Jun 20



07:46 AM EDT
Thu Jun 20 2024

Current Disturbances and Two-Day Cyclone Formation Chance:
X < 40% X 40-60% X > 60%
 Tropical or Sub-Tropical Cyclone: ○ Depression ◉ Storm ⦿ Hurricane
⊗ Post-Tropical Cyclone or Remnants

[View 7-Day Graphical Tropical Weather Outlook](#)



Key Messages for Tropical Storm Alberto

Advisory 11: 4:00 AM CDT Thu Jun 20, 2024



1. Users are reminded not to focus on the exact forecast track of this system. Alberto is very large with rainfall, coastal flooding, and wind impacts occurring far from the center along the coasts of Texas and northeastern Mexico.

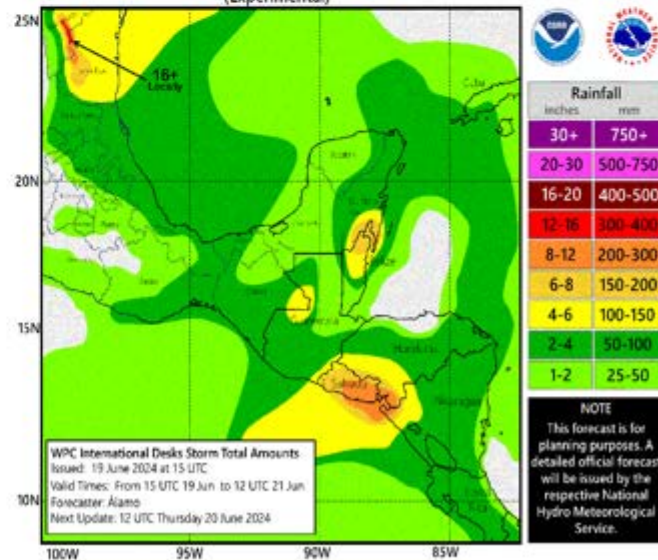
2. Rainfall associated with Tropical Storm Alberto will begin to diminish today across southern Texas. Rainfall associated with Alberto, however, will continue to impact large regions of Central America, north across northeastern Mexico. This rainfall will likely produce considerable flash and urban flooding along with new and renewed river flooding. Life-threatening flooding and mudslides are likely in and near areas of higher terrain across the Mexican states of Coahuila, Nuevo Leon, and Tamaulipas, including the cities of Monterrey and Ciudad Victoria.

3. Moderate coastal flooding is likely along much of the Texas Coast through the morning.

4. Tropical storm conditions are expected along portions of the coast of northeastern Mexico within the Tropical Storm Warning area though this morning.



2-Day Forecast Rainfall for Tropical Storm ALBERTO
(Experimental)



For more information go to hurricanes.gov

Central Pacific

Eastern Pacific

Atlantic

Disturbances: ALL [1] [2]

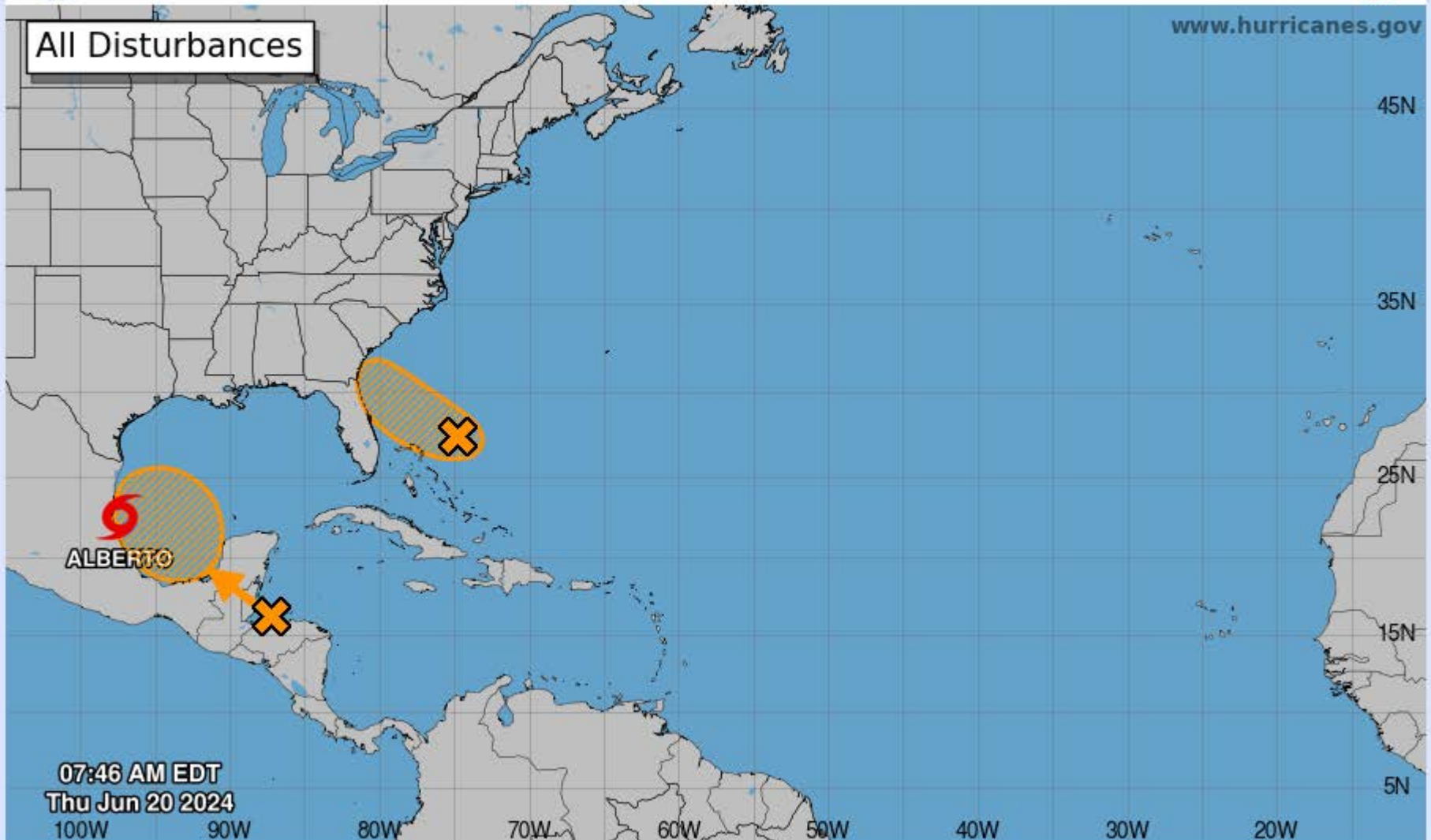


Seven-Day Graphical Tropical Weather Outlook

National Hurricane Center Miami, Florida



All Disturbances

www.hurricanes.gov07:46 AM EDT
Thu Jun 20 2024

Current Disturbances and Seven-Day Cyclone Formation Chance: < 40% 40-60% > 60%

Tropical or Sub-Tropical Cyclone: Depression Storm Hurricane

Post-Tropical Cyclone or Remnants