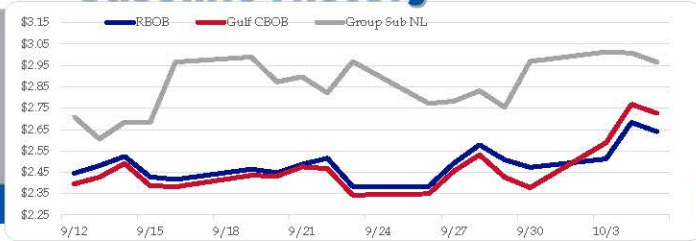


Gasoline

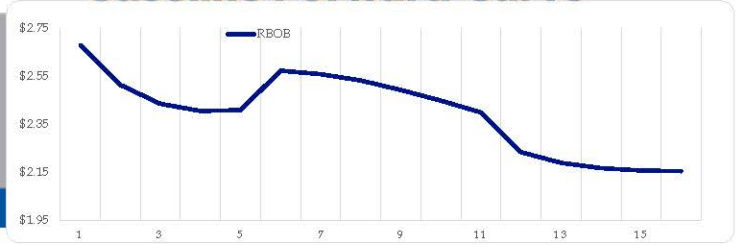
	RBOB	Change	Gulf CBOB	Change	Group Sub NL	Change	Gulf Basis	Group Basis	LA Basis
10/5	\$2.6404	-\$0.0426	\$2.7257	-\$0.0424	\$2.9664	-\$0.0421	\$ 0.0848	\$ 0.3257	\$ 1.7965
10/4	\$2.6830	\$0.1701	\$2.7681	\$0.1800	\$3.0085	-\$0.0046	\$ 0.0851	\$ 0.3255	\$ 1.7960
10/3	\$2.5129	\$0.0403	\$2.5881	\$0.2106	\$3.0131	\$0.0437	\$ 0.0752	\$ 0.5002	\$ 2.0460
9/30	\$2.4726	-\$0.0360	\$2.3776	-\$0.0486	\$2.9694	\$0.2163	\$(0.0950)	\$ 0.4968	\$ 2.1927
9/29	\$2.5076	-\$0.0703	\$2.4263	-\$0.1050	\$2.7542	-\$0.0768	\$(0.0814)	\$ 0.2466	\$ 2.3456
9/28	\$2.5779	\$0.0848	\$2.5312	\$0.0753	\$2.8309	\$0.0476	\$(0.0467)	\$ 0.2530	\$ 2.3343
9/27	\$2.4931	\$0.1089	\$2.4560	\$0.1073	\$2.7833	\$0.0114	\$(0.0372)	\$ 0.2902	\$ 2.3301
9/26	\$2.3842	\$0.0012	\$2.3486	\$0.0057	\$2.7719	-\$0.1963	\$(0.0356)	\$ 0.3877	\$ 2.2056

RBOB Technicals		
Indicator	Direction	Resistance
MACD	Neutral	3.1427 Aug High
Stochastics	Bullish	2.6888 Sep High
RSI	Neutral	2.2890 Sep Low
ADX	Bullish	1.8800 Dec Low
Momentum	Neutral	
Bias:	Neutral	

Gasoline History



Gasoline Forward Curve

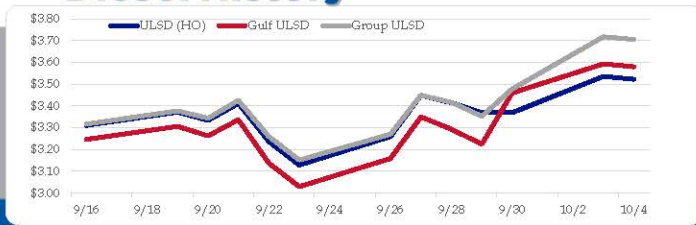


Diesel

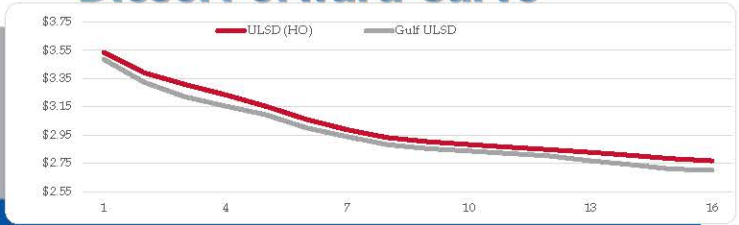
	ULSD (HO)	Change	Gulf ULSD	Change	Group ULSD	Change	Gulf Basis	Group Basis	LA Basis
10/5	\$3.5225	-\$0.0133	\$3.5798	-\$0.0134	\$3.7047	-\$0.0128	\$ 0.0568	\$ 0.1820	\$ 0.5355
10/4	\$3.5358	\$0.1667	\$3.5931	\$0.1337	\$3.7175	\$0.2392	\$ 0.0573	\$ 0.1817	\$ 0.5345
10/3	\$3.3691	\$0.0001	\$3.4594	\$0.2348	\$3.4783	\$0.1252	\$ 0.0903	\$ 0.1092	\$ 0.5345
9/30	\$3.3690	-\$0.0456	\$3.2246	-\$0.0690	\$3.3531	-\$0.0629	\$(0.1444)	\$(0.0159)	\$ 0.3871
9/29	\$3.4146	-\$0.0348	\$3.2936	-\$0.0564	\$3.4160	-\$0.0336	\$(0.1210)	\$ 0.0013	\$ 0.3701
9/28	\$3.4494	\$0.1895	\$3.3500	\$0.1910	\$3.4496	\$0.1792	\$(0.0994)	\$ 0.0002	\$ 0.3273
9/27	\$3.2599	\$0.1308	\$3.1590	\$0.1291	\$3.2704	\$0.1183	\$(0.1009)	\$ 0.0105	\$ 0.2475
9/26	\$3.1291	-\$0.1080	\$3.0300	-\$0.1079	\$3.1521	-\$0.1078			

HO Technicals		
Indicator	Direction	Resistance
MACD	Neutral	4.6444 June High
Stochastics	Bullish	4.1154 Aug High
RSI	Neutral	3.1085 Sep Low
ADX	Bullish	2.9330 March Low
Momentum	Bullish	
Bias:	Bullish	

Diesel History



Diesel Forward Curve



Crude

Refinery Margins

WTI				Brent				Vs WTI				Vs Brent				Group / WCS	
		Change				Change				Change				Change			
10/5	\$86.67	\$0.15	\$92.12	\$0.32	Gulf Gas	Gulf Diesel	3/2/1	5/3/2	Gulf Gas	Gulf Diesel	3/2/1	5/3/2	3/2/1				
10/4	\$86.52	\$2.89	\$91.80	\$2.94	\$29.74	\$64.39	\$41.29	\$43.60	\$24.46	\$59.11	\$36.01	\$38.32	52.65				
10/3	\$83.63	\$4.14	\$88.86	\$0.90	\$25.07	\$61.66	\$37.27	\$39.71	\$19.84	\$56.43	\$32.04	\$34.48	49.43				
9/30	\$79.49	-\$1.74	\$87.96	-\$0.63	\$20.37	\$55.94	\$32.23	\$34.60	\$11.90	\$47.47	\$23.76	\$26.13	50.60				
9/29	\$81.23	-\$0.92	\$88.49	-\$0.83	\$20.67	\$57.10	\$32.82	\$35.24	\$13.41	\$49.84	\$25.56	\$27.98	43.71				
CPL space	Line 1	Change	Line 2	Change													
		\$0.0018		-\$0.0085													

Economic Indicators

Commodity Futures

	Settle	Change		Settle	Change
S&P 500 Futures	3,770	-33.50	NatGas	6.470	0.367
DJIA	30,316		Gold	1,721	-11.8
EUR/USD	1.0007	-0.0085	Silver	21.04	-0.2
USD Index	109.98	0.85	Copper	3.52	-0.013
US 10 YR YIELD	3.62%	-0.05	FCOJ	198.95	-4.10
US 2 YR YIELD	4.10%	-0.02	Wheat	903.00	-6.75
Oil Volatility Index	56.24	3.27	Butane	0.997	0.018
S&P Volatility Index (VIX)	30.10	-1.03	Propane	0.858	0.018
Nikkei 225 Index	27,180	-200.00	Bitcoin	20,285	-235

RINs and Price Drivers

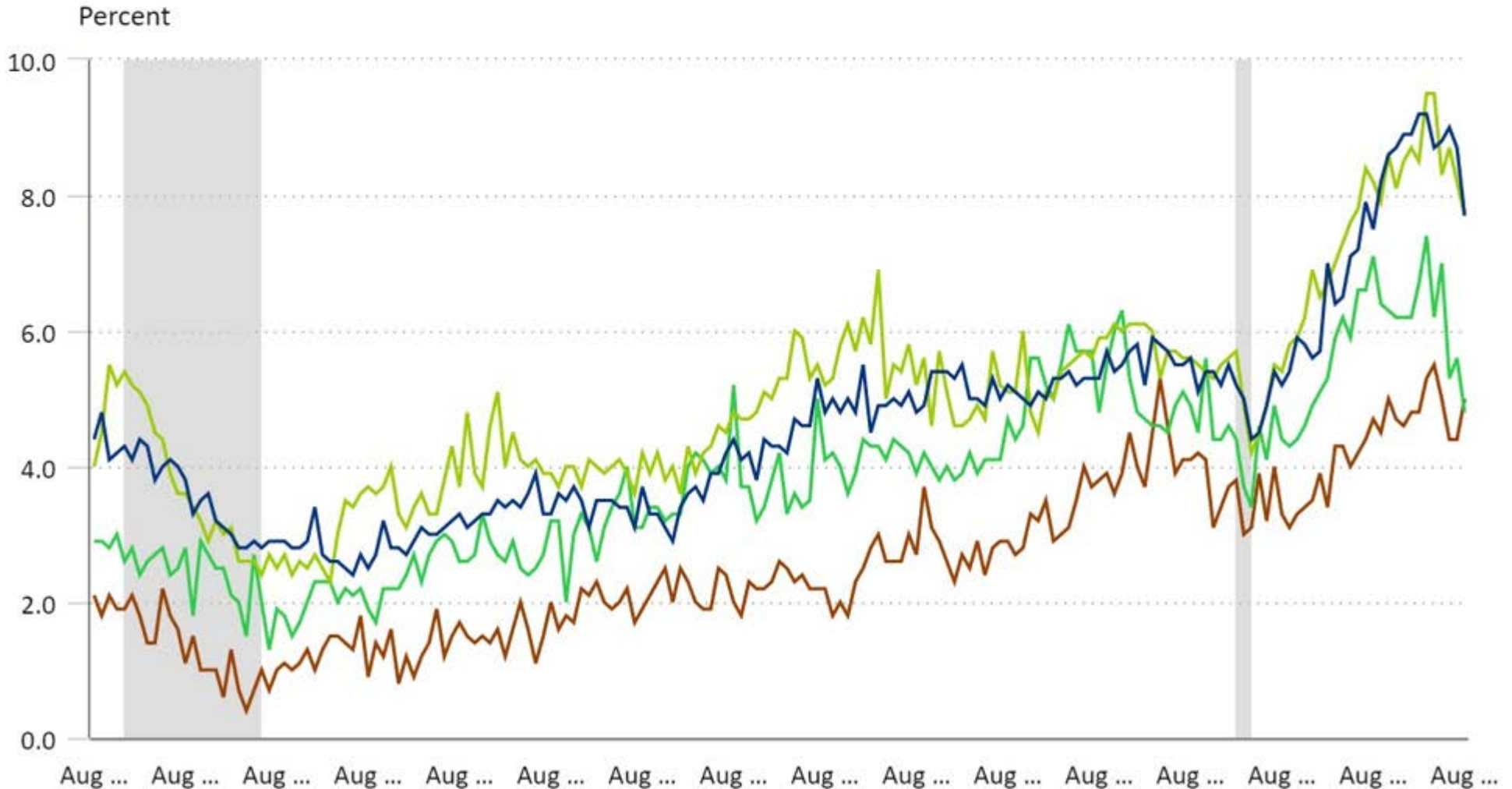
Current Year Biodiesel RINs			Current Year Ethanol RINs		
	Settle	Net Change		Settle	Net Change
	1.7675	0.028		1.5963	0.026
Price Drivers			Price Drivers		
	Settle	Net Change		Settle	Net Change
Soybeans	1383.50	-11.000	Ethanol	2.16	0.000
Soybean Oil	68.63	0.050	Corn	683.00	-4.000
BOHO Spread	1.611		Corn Crush	-0.278	
Soy Crush	749.96		RVO Estimate		
			Per Gallon	\$ 0.1930	\$ 0.0030
			Per Barrel	\$ 8.11	\$ 0.13

*SOURCES: Nymex, CBOT, NYSE, ICE, NASDAQ, CME Group, CBOE. Prices delayed.

Job openings rates by industry, seasonally adjusted

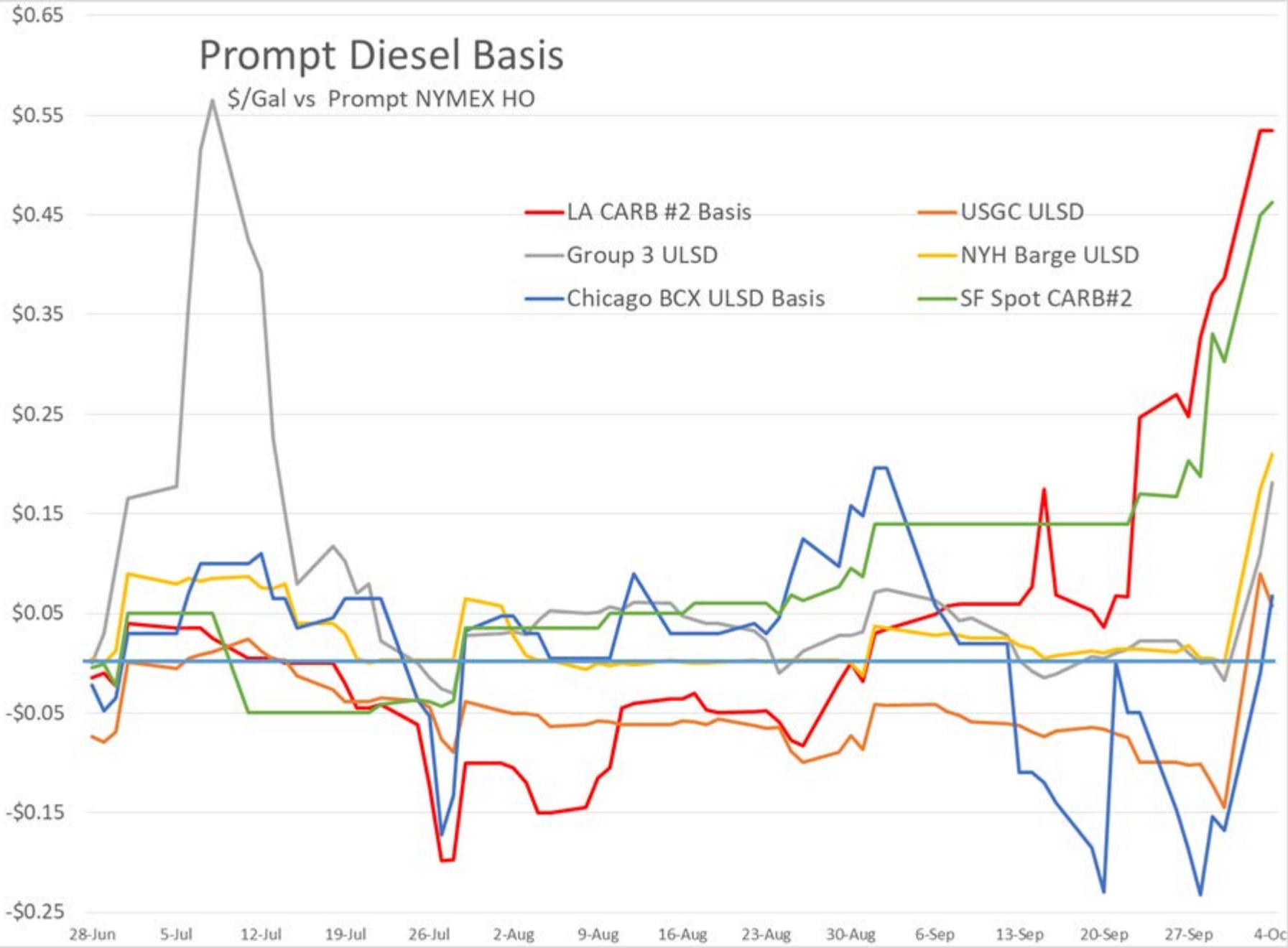
Click and drag within the chart to zoom in on time periods

- Total nonfarm
- Mining and logging
- Construction
- Durable goods manufacturing
- Nondurable goods manufacturing
- Wholesale trade
- Retail trade
- Transportation, warehousing, and utilities
- Information
- Finance and insurance
- Real estate and rental and leasing
- Professional and business services
- Educational services
- Health care and social assistance
- Arts, entertainment, and recreation
- Accommodation and food services
- Other services
- Federal government
- State and local government education
- State and local government, excluding education

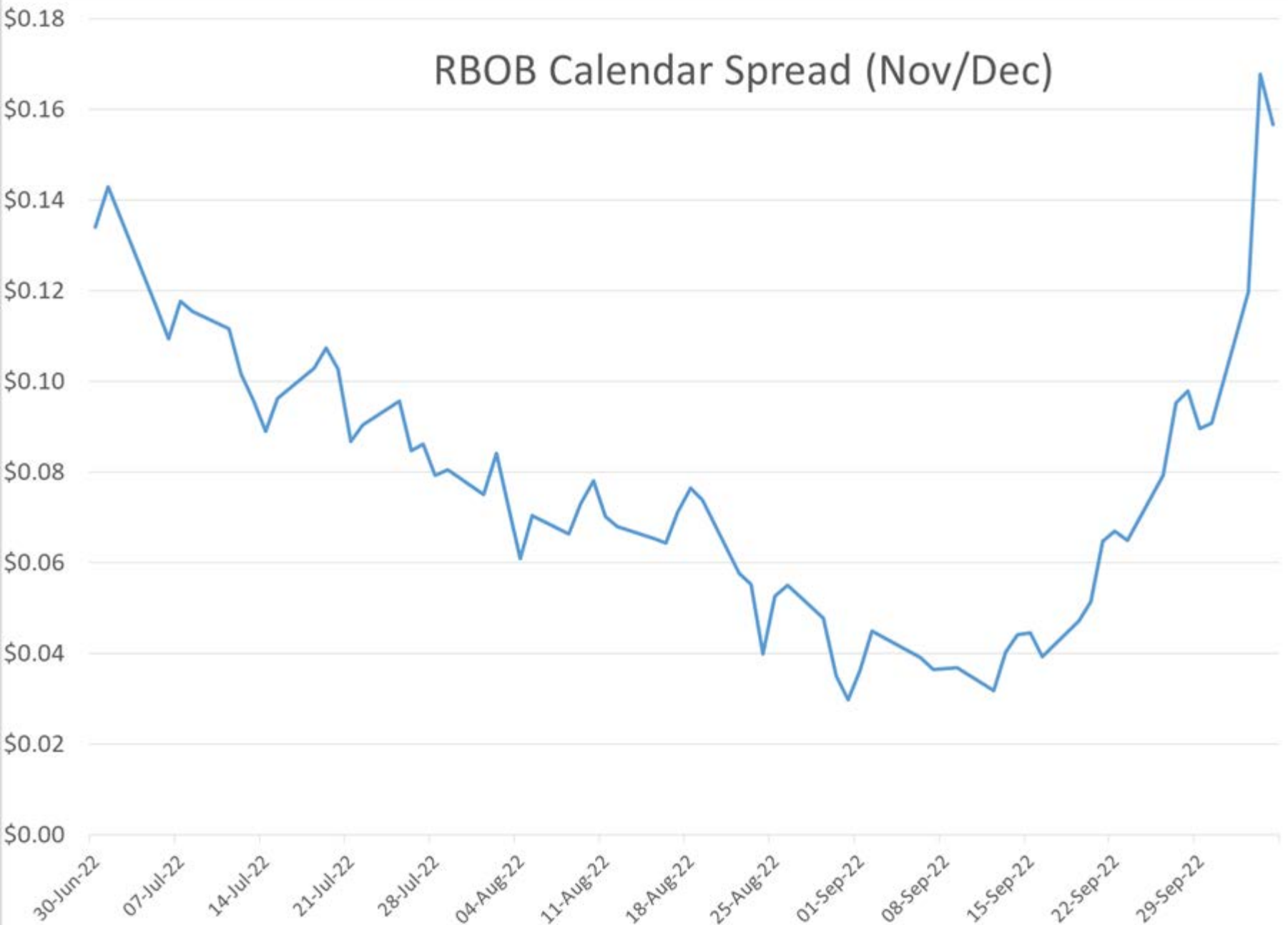


Prompt Diesel Basis

\$/Gal vs Prompt NYMEX HO

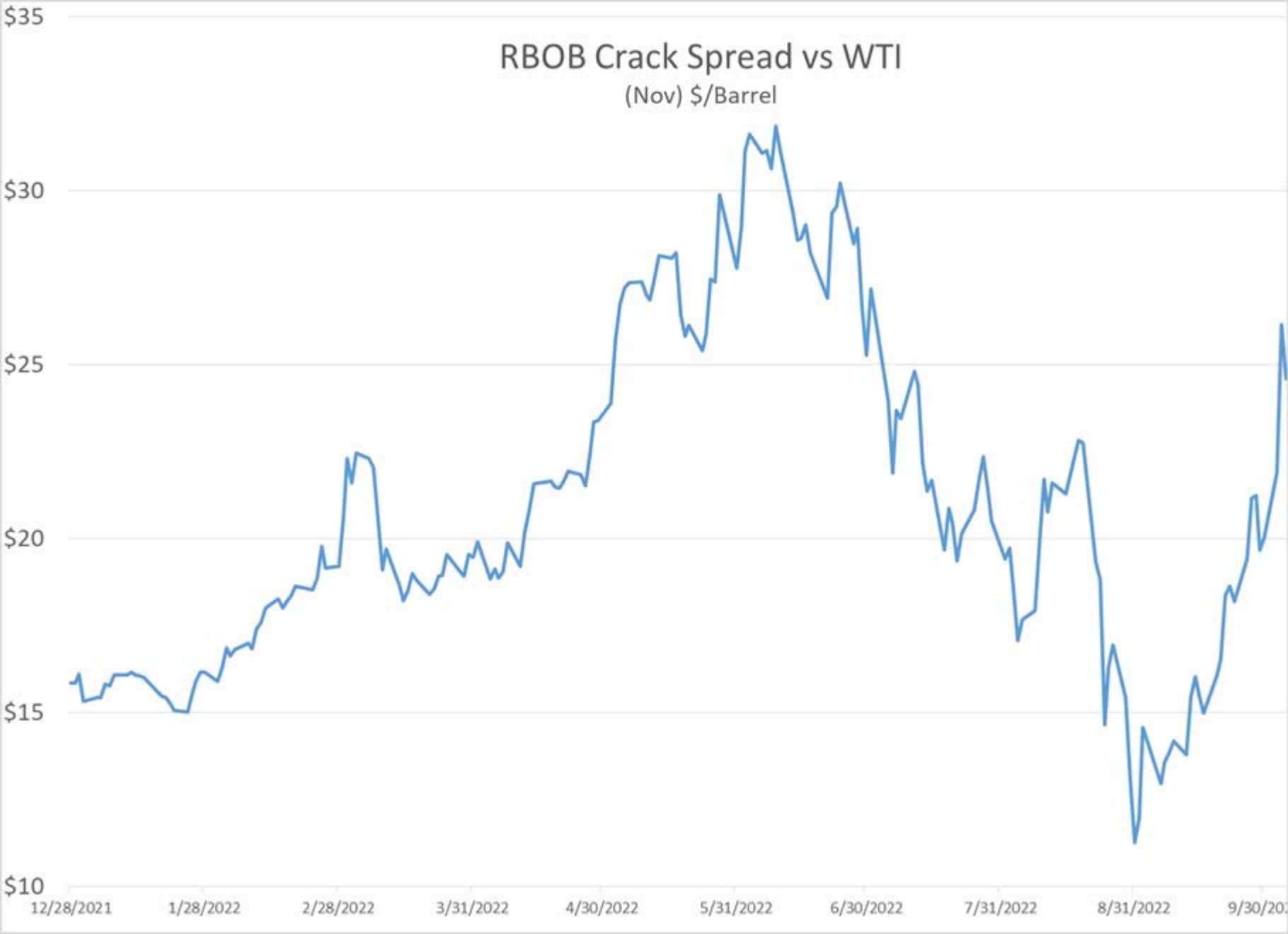


RBOB Calendar Spread (Nov/Dec)



RBOB Crack Spread vs WTI

(Nov) \$/Barrel



ULSD Calendar Spread

Nov/Dec

