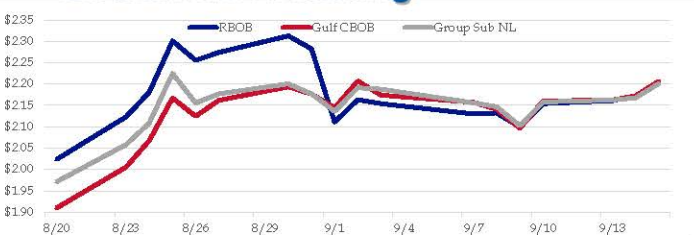


**Gasoline**

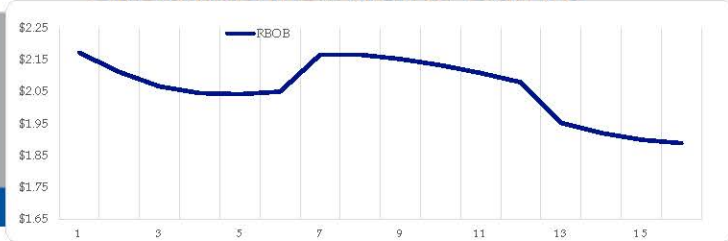
|      | RBOB     | Change    | Gulf CBOB | Change    | Group Sub NL | Change    | Gulf Basis  | Group Basis | LA Basis    |
|------|----------|-----------|-----------|-----------|--------------|-----------|-------------|-------------|-------------|
| 9/15 | \$2.2060 | \$0.0336  | \$2.2066  | \$0.0341  | \$2.2013     | \$0.0337  | \$ 0.0001   | \$ (0.0050) | \$ (0.0490) |
| 9/14 | \$2.1724 | \$0.0115  | \$2.1725  | \$0.0099  | \$2.1676     | \$0.0050  | \$ 0.0001   | \$ (0.0048) | \$ (0.0495) |
| 9/13 | \$2.1609 | \$0.0069  | \$2.1627  | \$0.0023  | \$2.1627     | \$0.0047  | \$ 0.0018   | \$ 0.0018   | \$ 0.0005   |
| 9/10 | \$2.1540 | \$0.0543  | \$2.1604  | \$0.0634  | \$2.1580     | \$0.0558  | \$ 0.0064   | \$ 0.0040   | \$ 0.0005   |
| 9/9  | \$2.0997 | -\$0.0324 | \$2.0970  | -\$0.0437 | \$2.1022     | -\$0.0446 | \$ (0.0027) | \$ 0.0025   | \$ 0.0005   |
| 9/8  | \$2.1321 | \$0.0021  | \$2.1407  | -\$0.0167 | \$2.1468     | -\$0.0091 | \$ 0.0086   | \$ 0.0147   | \$ 0.0655   |
| 9/7  | \$2.1300 | -\$0.0240 | \$2.1573  | -\$0.0165 | \$2.1560     | -\$0.0320 | \$ 0.0273   | \$ 0.0259   | \$ 0.1355   |
| 9/3  | \$2.1540 | -\$0.0095 | \$2.1738  | -\$0.0333 | \$2.1880     | -\$0.0032 | \$ 0.0198   | \$ 0.0339   | \$ 0.1510   |

| RBOB Technicals |           |                  |
|-----------------|-----------|------------------|
| Indicator       | Direction | Resistance       |
| MACD            | Neutral   | 3.1520 2014 High |
| Stochastics     | Bullish   | 2.3526 2021 High |
| RSI             | Neutral   | 2.0051 Aug Low   |
| ADX             | Bullish   | 1.8891 March Low |
| Momentum        | Bullish   |                  |
| Bias:           | Bullish   |                  |

**Gasoline History**



**Gasoline Forward Curve**

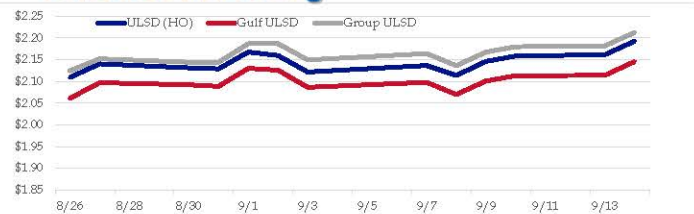


**Diesel**

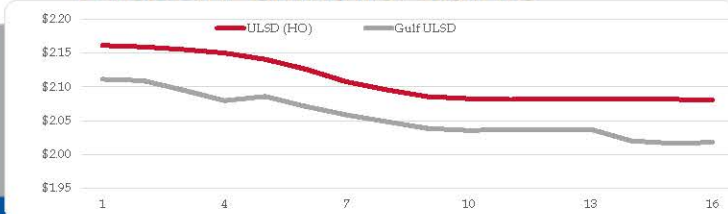
|      | ULSD (HO) | Change    | Gulf ULSD | Change    | Group ULSD | Change    | Gulf Basis  | Group Basis | LA Basis  |
|------|-----------|-----------|-----------|-----------|------------|-----------|-------------|-------------|-----------|
| 9/15 | \$2.1926  | \$0.0313  | \$2.1455  | \$0.0314  | \$2.2127   | \$0.0310  | \$ (0.0477) | \$ 0.0199   | \$ 0.0355 |
| 9/14 | \$2.1613  | \$0.0030  | \$2.1141  | \$0.0010  | \$2.1817   | \$0.0017  | \$ (0.0472) | \$ 0.0204   | \$ 0.0345 |
| 9/13 | \$2.1583  | \$0.0123  | \$2.1131  | \$0.0121  | \$2.1800   | \$0.0124  | \$ (0.0452) | \$ 0.0216   | \$ 0.0345 |
| 9/10 | \$2.1460  | \$0.0323  | \$2.1010  | \$0.0311  | \$2.1675   | \$0.0312  | \$ (0.0450) | \$ 0.0215   | \$ 0.0345 |
| 9/9  | \$2.1137  | -\$0.0227 | \$2.0699  | -\$0.0278 | \$2.1363   | -\$0.0278 | \$ (0.0438) | \$ 0.0226   | \$ 0.0345 |
| 9/8  | \$2.1364  | \$0.0148  | \$2.0977  | \$0.0115  | \$2.1641   | \$0.0145  | \$ (0.0387) | \$ 0.0277   | \$ 0.0745 |
| 9/7  | \$2.1216  | -\$0.0378 | \$2.0862  | -\$0.0397 | \$2.1496   | -\$0.0373 | \$ (0.0354) | \$ 0.0280   | \$ 0.0795 |
| 9/3  | \$2.1594  | -\$0.0083 | \$2.1260  | -\$0.0041 | \$2.1869   | \$0.0002  |             |             |           |

| HO Technicals |            |                  |
|---------------|------------|------------------|
| Indicator     | Direction  | Resistance       |
| MACD          | Overbought | 2.4500 2018 High |
| Stochastics   | Overbought | 2.2101 2021 High |
| RSI           | Overbought | 1.9553 June Low  |
| ADX           | Bullish    | 1.7295 March Low |
| Momentum      | Bullish    |                  |
| Bias:         | Neutral    |                  |

**Diesel History**



**Diesel Forward Curve**



**Crude**

|           | WTI     | Change    | Brent     | Change    |
|-----------|---------|-----------|-----------|-----------|
| 9/15      | \$71.70 | \$1.24    | \$74.64   | \$1.04    |
| 9/14      | \$70.46 | \$0.01    | \$73.60   | \$0.09    |
| 9/13      | \$70.45 | \$0.73    | \$73.51   | \$0.59    |
| 9/10      | \$69.72 | \$1.58    | \$72.92   | \$1.47    |
| 9/9       | \$68.14 | -\$1.16   | \$71.45   | -\$1.15   |
| Line 1    | Change  | Line 2    | Change    |           |
| CPL space | -0.0058 | -\$0.0020 | -\$0.0045 | -\$0.0003 |

**Refinery Margins**

|      |         |         |         | Vs WTI   |             |         |         | Vs Brent |             |         |         | Group / WCS |
|------|---------|---------|---------|----------|-------------|---------|---------|----------|-------------|---------|---------|-------------|
|      |         |         |         | Gulf Gas | Gulf Diesel | 3/2/1   | 5/3/2   | Gulf Gas | Gulf Diesel | 3/2/1   | 5/3/2   | 3/2/1       |
| 9/15 | \$71.70 | \$1.24  | \$74.64 | \$20.79  | \$18.33     | \$19.97 | \$19.80 | \$17.65  | \$15.19     | \$16.83 | \$16.66 | 20.79       |
| 9/14 | \$70.46 | \$0.01  | \$73.60 | \$20.38  | \$18.30     | \$19.69 | \$19.55 | \$17.32  | \$15.24     | \$16.63 | \$16.49 | 20.62       |
| 9/13 | \$70.45 | \$0.73  | \$73.51 | \$20.38  | \$18.30     | \$19.69 | \$19.55 | \$17.32  | \$15.24     | \$16.63 | \$16.49 | 20.62       |
| 9/10 | \$69.72 | \$1.58  | \$72.92 | \$21.01  | \$18.52     | \$20.18 | \$20.02 | \$17.81  | \$15.32     | \$16.98 | \$16.82 | 21.05       |
| 9/9  | \$68.14 | -\$1.16 | \$71.45 | \$19.93  | \$18.79     | \$19.55 | \$19.48 | \$16.62  | \$15.48     | \$16.24 | \$16.17 | 20.63       |

**Economic Indicators**

**Commodity Futures**

|                            | Settle | Change |         | Settle | Change |
|----------------------------|--------|--------|---------|--------|--------|
| S&P 500 Futures            | 4,206  | 3.50   | NatGas  | 5.231  | 0.029  |
| DJIA                       | 34,578 | -30.16 | Gold    | 1,805  | -2.7   |
| EUR/USD                    | 1.1816 | 0.0019 | Silver  | 23.84  | 0.0    |
| USD Index                  | 92.61  | -0.18  | Copper  | 4.32   | 0.033  |
| US 10 YR YIELD             | 1.28%  | -0.05  | FCOJ    | 141.65 | -0.10  |
| US 2 YR YIELD              | 0.21%  | 0.00   | Wheat   | 700.75 | 3.25   |
| Oil Volatility Index       | 32.74  | 0.89   | Butane  | 1.423  | 0.008  |
| S&P Volatility Index (VIX) | 19.37  | 0.09   | Propane | 1.221  | 0.009  |
| Nikkei 225 Index           | 30,190 | 105.00 | Bitcoin | 46,515 | 1,180  |

**RINs and Price Drivers**

| Current Year Biodiesel RINs |         |            | Current Year Ethanol RINs |           |            |
|-----------------------------|---------|------------|---------------------------|-----------|------------|
|                             | Settle  | Net Change |                           | Settle    | Net Change |
|                             | 1.4900  | 0.015      |                           | 1.2725    | 0.013      |
| Price Drivers               |         |            | Price Drivers             |           |            |
| Soybeans                    | 1282.50 | 6.750      | Ethanol                   | 2.37      | 0.020      |
| Soybean Oil                 | 56.74   | 0.810      | Com                       | 520.25    | 5.000      |
| BOHO Spread                 | 2.094   |            | Com Crush                 | 0.512     |            |
| Soy Crush                   | 618.75  |            | RVO Estimate              |           |            |
|                             |         |            | Per Gallon                | \$ 0.1590 | \$ 0.0020  |
|                             |         |            | Per Barrel                | \$ 6.68   | \$ 0.08    |

\*SOURCES: Nymex, CBOT, NYSE, ICE, NASDAQ, CME Group, CBOE. Prices delayed.

Disturbances: ALL [1] [2] [3]



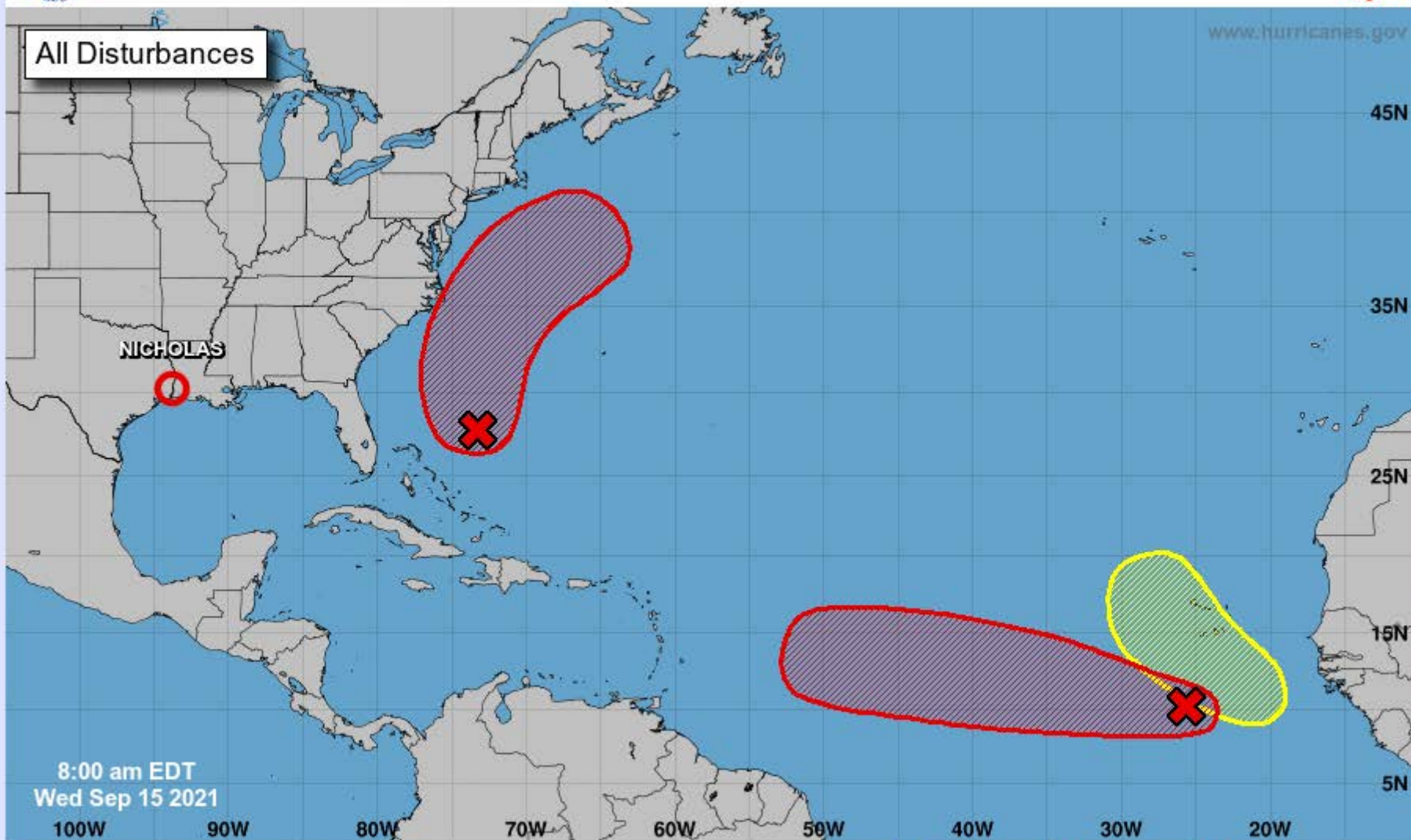
# Five-Day Graphical Tropical Weather Outlook

National Hurricane Center Miami, Florida



www.hurricanes.gov

All Disturbances



8:00 am EDT  
Wed Sep 15 2021

100W 90W 80W 70W 60W 50W 40W 30W 20W

45N  
35N  
25N  
15N  
5N

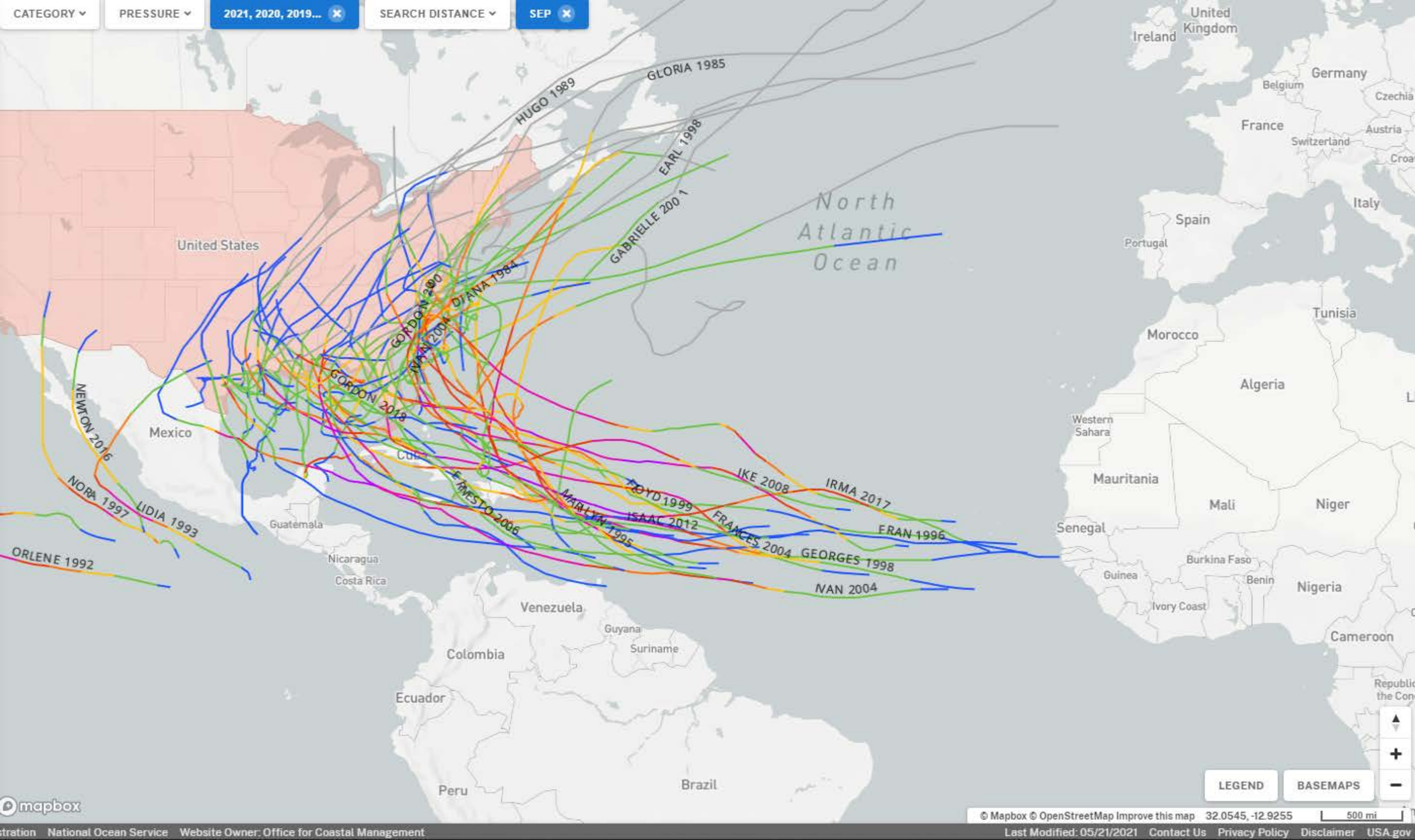
Current Disturbances and Five-Day Cyclone Formation Chance: < 40% 40-60% > 60%

Tropical or Sub-Tropical Cyclone: Depression Storm Hurricane

Post-Tropical Cyclone or Remnants

[View 2-Day Graphical Tropical Weather Outlook](#)





North Atlantic Ocean

United States

Mexico

Guatemala

Nicaragua

Costa Rica

Venezuela

Colombia

Ecuador

Peru

Brazil

Guyana

Suriname

Ireland

United Kingdom

France

Spain

Portugal

Morocco

Western Sahara

Mauritania

Senegal

Guinea

Ivory Coast

Burkina Faso

Benin

Nigeria

Cameroon

Republic of the Congo

LEGEND

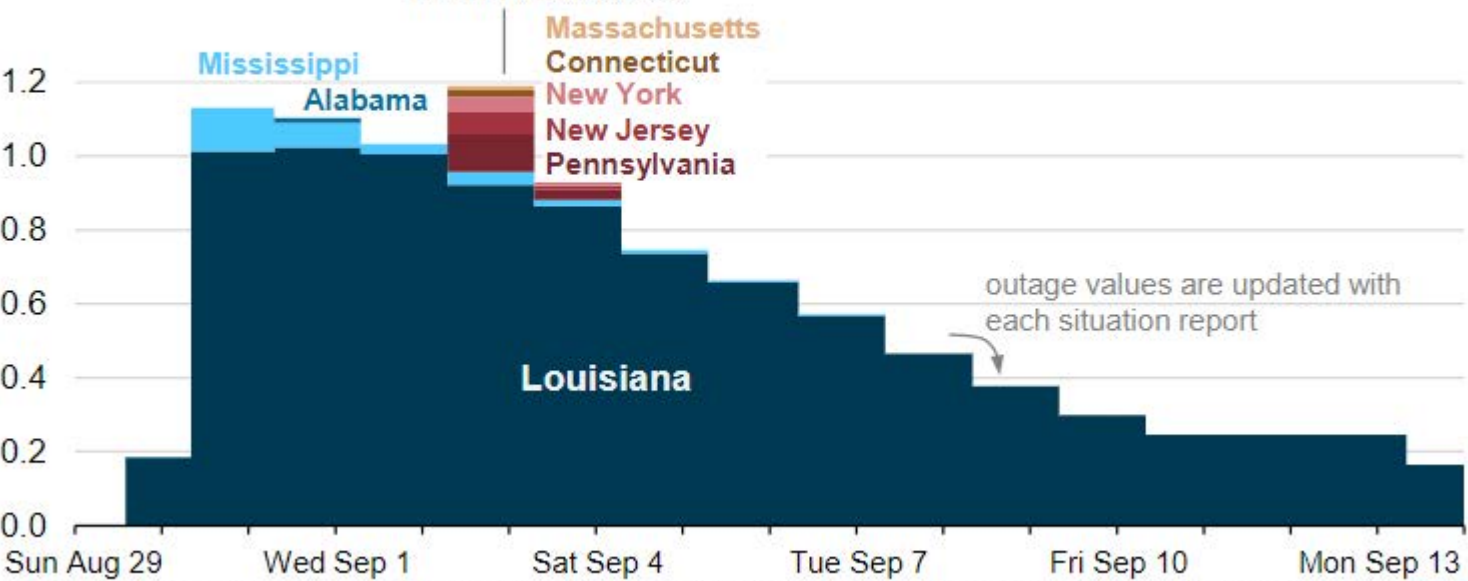
BASEMAPS



# Electricity customer outages from Hurricane Ida (Aug 29–Sep 13, 2021)

million customers

peak outages: Sep 2, 2021  
1.2 million customers



Source: Graph by the U.S. Energy Information Administration, based on data from the U.S. Department of Energy Office of Cybersecurity, Energy Security, and Emergency Response