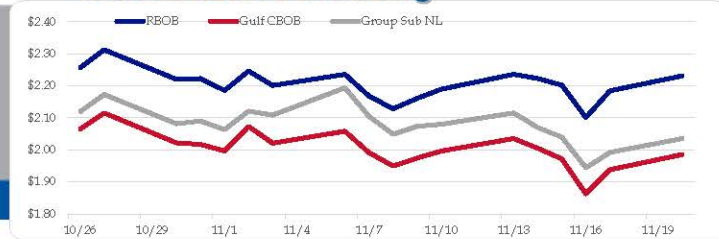


Gasoline

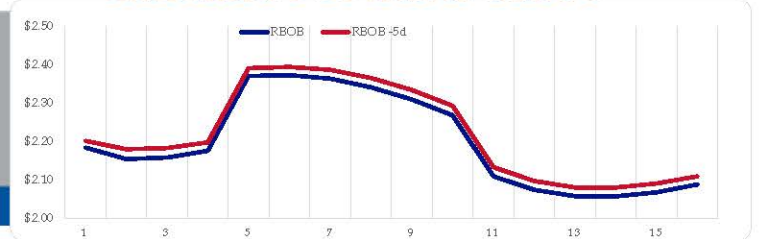
	RBOB	Change	Gulf CBOB	Change	Group Sub NL	Change	Gulf Basis	Group Basis	LA Basis
11/20	\$2.2313	\$0.0468	\$1.9855	\$0.0471	\$2.0353	\$0.0433	\$ (0.2464)	\$ (0.1963)	\$ 0.1895
11/17	\$2.1845	\$0.0834	\$1.9384	\$0.0758	\$1.9920	\$0.0482	\$ (0.2462)	\$ (0.1925)	\$ 0.1910
11/16	\$2.1011	-\$0.1007	\$1.8626	-\$0.1096	\$1.9438	-\$0.0964	\$ (0.2386)	\$ (0.1573)	\$ 0.3060
11/15	\$2.2018	-\$0.0210	\$1.9721	-\$0.0330	\$2.0402	-\$0.0292	\$ (0.2297)	\$ (0.1617)	\$ 0.4710
11/14	\$2.2228	-\$0.0131	\$2.0051	-\$0.0303	\$2.0694	-\$0.0458	\$ (0.2177)	\$ (0.1535)	\$ 0.4945
11/13	\$2.2359	\$0.0464	\$2.0354	\$0.0389	\$2.1152	\$0.0355	\$ (0.2005)	\$ (0.1208)	\$ 0.4847
11/10	\$2.1895	\$0.0287	\$1.9965	\$0.0222	\$2.0797	\$0.0062	\$ (0.1930)	\$ (0.1098)	\$ 0.4396
11/9	\$2.1608	\$0.0323	\$1.9744	\$0.0248	\$2.0735	\$0.0248	\$ (0.1865)	\$ (0.0873)	\$ 0.4418

RBOB Technicals		
Indicator	Direction	Resistance
MACD	Neutral	2.9936 2023 High
Stochastics	Bullish	2.7703 Sep High
RSI	Neutral	2.1220 2023 Low
ADX	Bearish	2.0204 Dec 2022 Low
Momentum	Neutral	Support
Bias:	Neutral	

Gasoline History



Gasoline Forward Curve

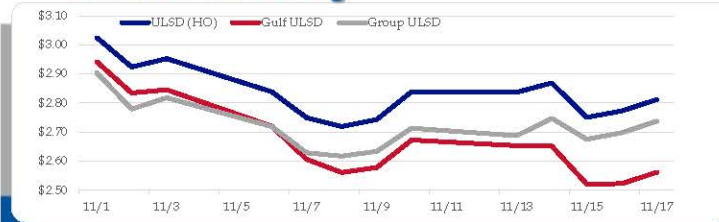


Diesel

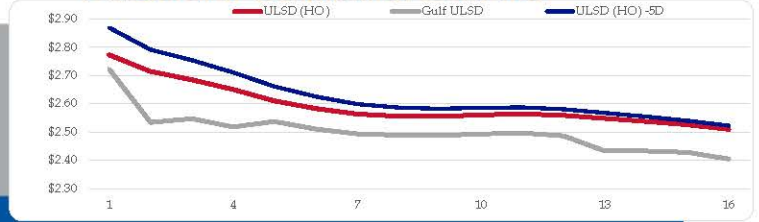
	ULSD (HO)	Change	Gulf ULSD	Change	Group ULSD	Change	Gulf Basis	Group Basis	LA Basis
11/20	\$2.8114	\$0.0389	\$2.5617	\$0.0389	\$2.7370	\$0.0391	\$ (0.2507)	\$ (0.0746)	\$ 0.0769
11/17	\$2.7725	\$0.0223	\$2.5223	\$0.0013	\$2.6979	\$0.0223	\$ (0.2502)	\$ (0.0746)	\$ 0.0759
11/16	\$2.7502	-\$0.1185	\$2.5210	-\$0.1307	\$2.6756	-\$0.0721	\$ (0.2292)	\$ (0.0746)	\$ 0.2795
11/15	\$2.8687	\$0.0316	\$2.6517	-\$0.0013	\$2.7477	\$0.0605	\$ (0.2170)	\$ (0.1210)	\$ 0.2795
11/14	\$2.8371	-\$0.0022	\$2.6530	-\$0.0196	\$2.6872	-\$0.0260	\$ (0.1841)	\$ (0.1499)	\$ 0.2795
11/13	\$2.8393	\$0.0962	\$2.6726	\$0.0946	\$2.7133	\$0.0796	\$ (0.1668)	\$ (0.1261)	\$ 0.2595
11/10	\$2.7431	\$0.0240	\$2.5780	\$0.0170	\$2.6336	\$0.0165	\$ (0.1652)	\$ (0.1095)	\$ 0.2345
11/9	\$2.7191	-\$0.0301	\$2.5609	-\$0.0454	\$2.6171	-\$0.0111			

HO Technicals		
Indicator	Direction	Resistance
MACD	Neutral	3.5800 2003 High
Stochastics	Bullish	3.5092 Sep High
RSI	Neutral	2.7175 Nov Low
ADX	Bearish	2.3750 July Low
Momentum	Neutral	Support
Bias:	Neutral	

Diesel History



Diesel Forward Curve



Crude

	WTI	Change	Brent	Change
11/20	\$77.60	\$1.71	\$82.27	\$1.66
11/17	\$75.89	\$2.99	\$80.61	\$3.19
11/16	\$72.90	-\$3.76	\$77.42	-\$3.76
11/15	\$76.66	-\$1.60	\$81.18	-\$1.29
11/14	\$78.26	\$0.00	\$82.47	\$1.04
CPL	Line 1	Change	Line 2	Change
space	0.1675	-\$0.0062	\$0.1505	\$0.0512

Refinery Margins

Vs WTI				Vs Brent				Group / WCS	
	Gulf Gas	Gulf Diesel	3/2/1	5/3/2	Gulf Gas	Gulf Diesel	3/2/1	5/3/2	3/2/1
11/20	\$5.52	\$30.05	\$13.70	\$15.33	\$0.80	\$25.33	\$8.98	\$10.61	\$ 32.65
11/17	\$5.33	\$32.98	\$14.55	\$16.39	\$0.81	\$28.46	\$10.03	\$11.87	\$ 30.98
11/16	\$6.17	\$34.71	\$15.68	\$17.59	\$1.65	\$30.19	\$11.16	\$13.07	\$ 30.93
11/15	\$5.95	\$33.17	\$15.02	\$16.84	\$1.74	\$28.96	\$10.81	\$12.63	\$ 29.30
11/14	\$7.23	\$33.99	\$16.15	\$17.93	\$4.06	\$30.82	\$12.98	\$14.76	\$ 30.95

RINs and Price Drivers

Current Year Biodiesel RINs			Current Year Ethanol RINs		
	Settle	Net Change		Settle	Net Change
	0.8395	-0.023		0.8350	-0.021
Price Drivers			Price Drivers		
Soybeans	Settle	Net Change	Ethanol	Settle	Net Change
	1340.25	13.600		1.89	-0.004
Soybean Oil	52.01	0.620	Com	467.00	1.000
BOHO Spread	1.128		Com Crush	0.220	
Soy Crush	568.68		RVO Estimate		
			Per Gallon	\$ 0.1060	(\$ 0.0020)
			Per Barrel	\$ 4.45	(\$ 0.08)

Economic Indicators **Commodity Futures**

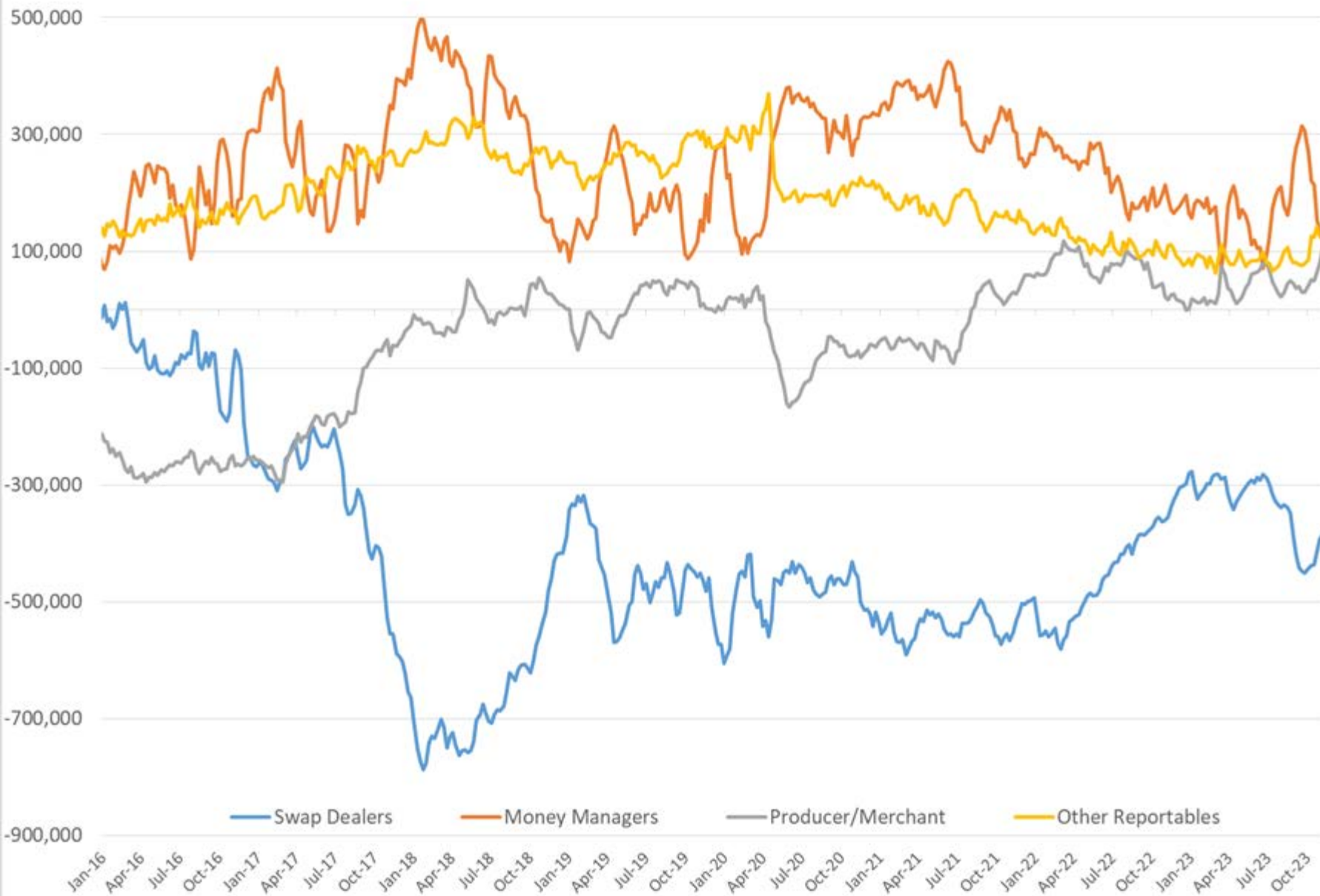
	Settle	Change		Settle	Change
S&P 500 Futures	4,528	0.00	US NatGas	3.062	-0.102
DJIA	34,947	1.81	TTF NatGas	14.40	-0.2
EUR/USD	1.0913	0.0027	Gold	1,982	-5.5
USD Index	103.80	-0.31	Silver	23.81	-0.3
US 10 YR YIELD	4.44%	-0.01	Copper	415.80	8.200
US 2 YR YIELD	4.88%	0.05	FCO J	1340.25	13.75
Oil Volatility Index	42.53	-2.10	Wheat	550.75	-2.75
S&P Volatility Index (VIX)	14.32	-0.52	Butane	0.866	0.011
Nikkei 225 Index	33,540	-270.00	Propane	0.639	0.011
			Bitcoin	36,565	680

*SOURCES: Nymex, CBOT, NYSE, ICE, NASDAQ, CME Group, CBOE. Prices delayed.

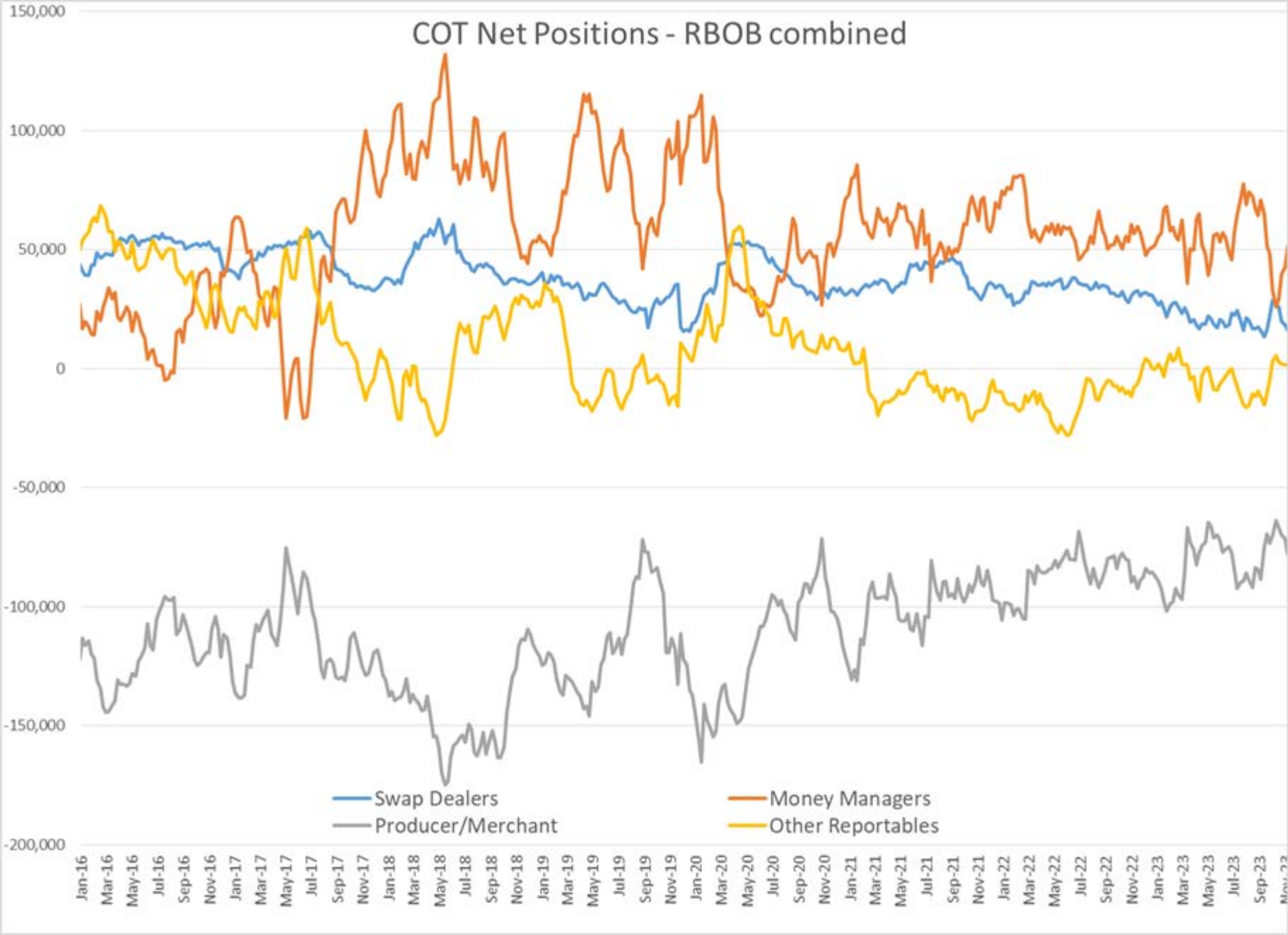
Commitment of Traders Report - Money Manager Recap

Date of compilation	HO Managed				WTI Managed				RBOB Managed				Brent Managed				LS Gasoil Managed			
	Long Positions	Short Positions	HO Open Interest	Net Position	Long Positions	Short Positions	WTI Open Interest	Net Position	Long Positions	Short Positions	RBOB Open Interest	Net Position	Long Positions	Short Positions	Brent Open Interest	Net Position	Long Positions	Short Positions	LS Gasoil Open Interest	Net Position
11/15/2023	51,012	16,740	310,653	34,272	223,625	99,329	2,279,518	124,296	69,093	17,825	328,716	51,268	218,596	47,611	2,658,707	170,985	56,108	47,040	643,536	9,068
11/7/2023	48,411	19,925	313,514	28,486	231,309	95,756	2,323,775	135,553	61,317	18,849	317,875	42,468	221,791	45,753	2,660,588	176,038	62,350	46,212	681,886	16,138
1 Week	2,601	(3,185)	(2,861)	5,786	(7,684)	3,573	(44,257)	(11,257)	7,776	(1,024)	10,841	8,800	(3,195)	1,858	(1,881)	(5,053)	(6,242)	828	(38,350)	(7,070)
% Change	5.4%	-16.0%	-0.9%	20.3%	-3.3%	3.7%	-1.9%	-8.3%	12.7%	-5.4%	3.4%	20.7%	-1.4%	4.1%	-0.1%	-2.9%	-10.0%	1.8%	-5.6%	-43.8%
1 Year	16,344	10,020	27,472	6,324	(5,949)	61,588	167,132	(67,537)	8,131	13,473	62,821	(5,342)	(39,104)	(1,539)	249,870	(37,565)	(14,243)	30,757	165,587	(45,000)
% Change	47%	149%	10%	23%	-3%	163%	8%	-35%	13%	310%	24%	-9%	-15%	-3%	10%	-18%	-20%	189%	35%	-83%

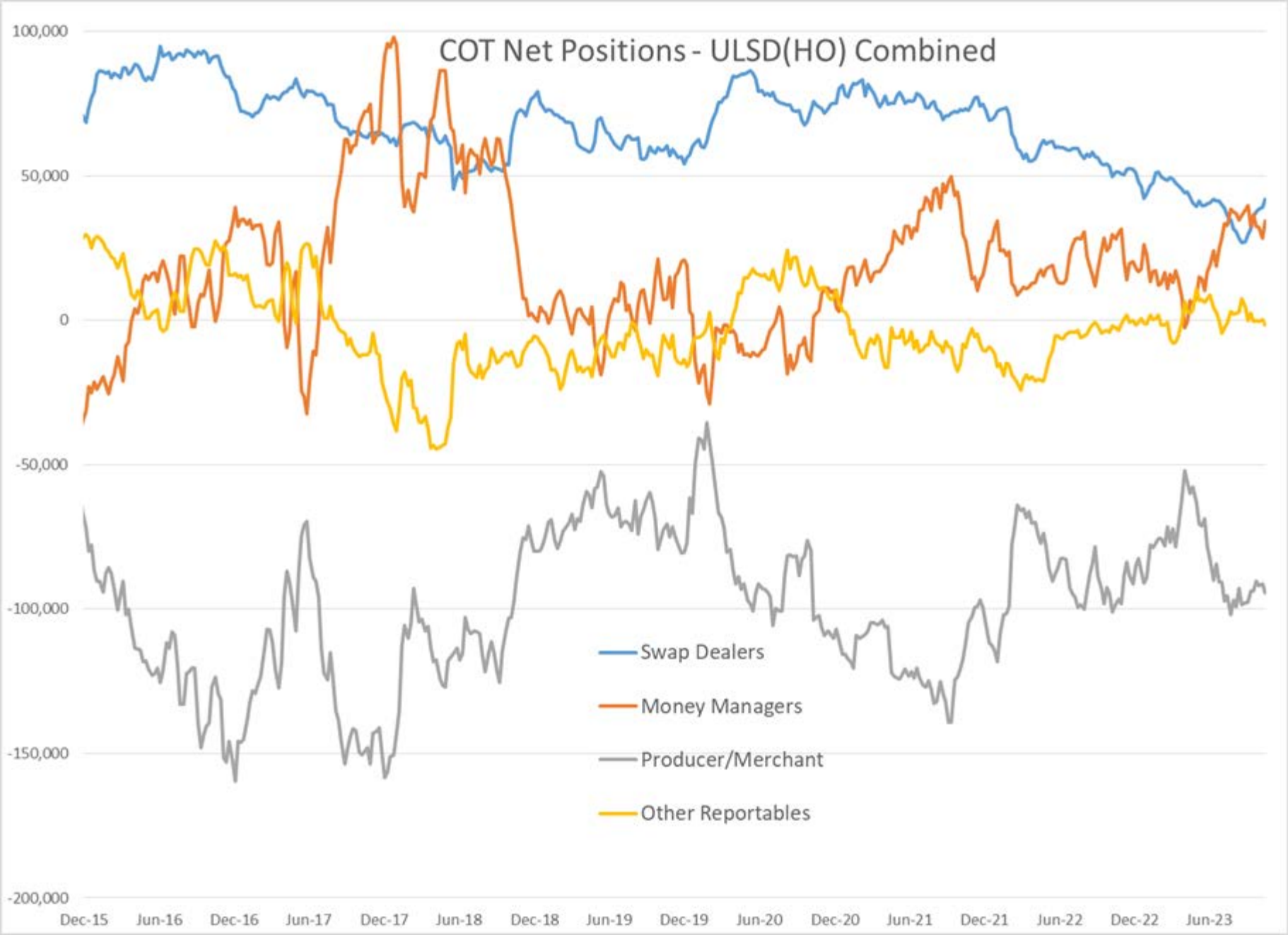
COT Net Positions - WTI combined



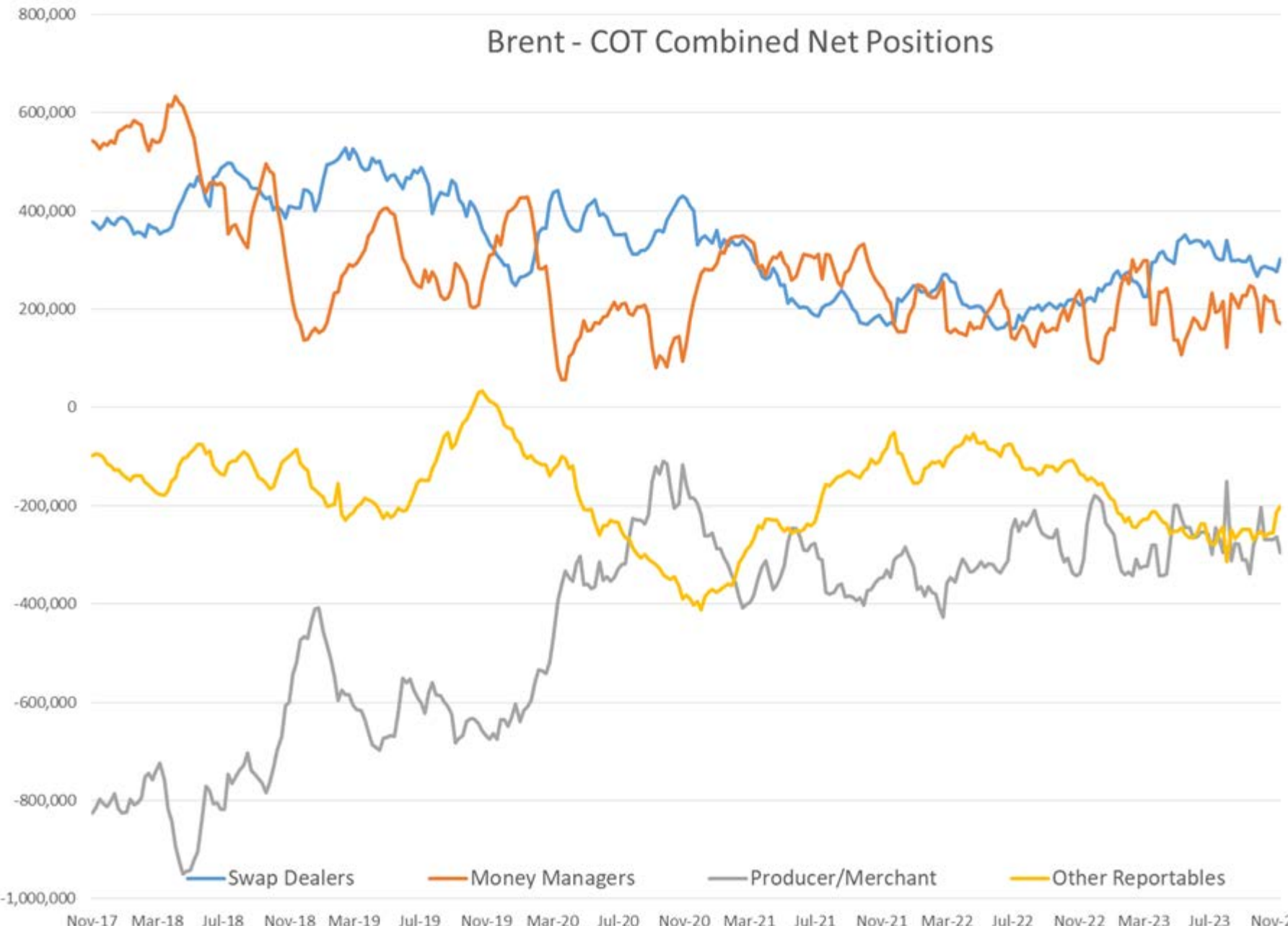
COT Net Positions - RBOB combined



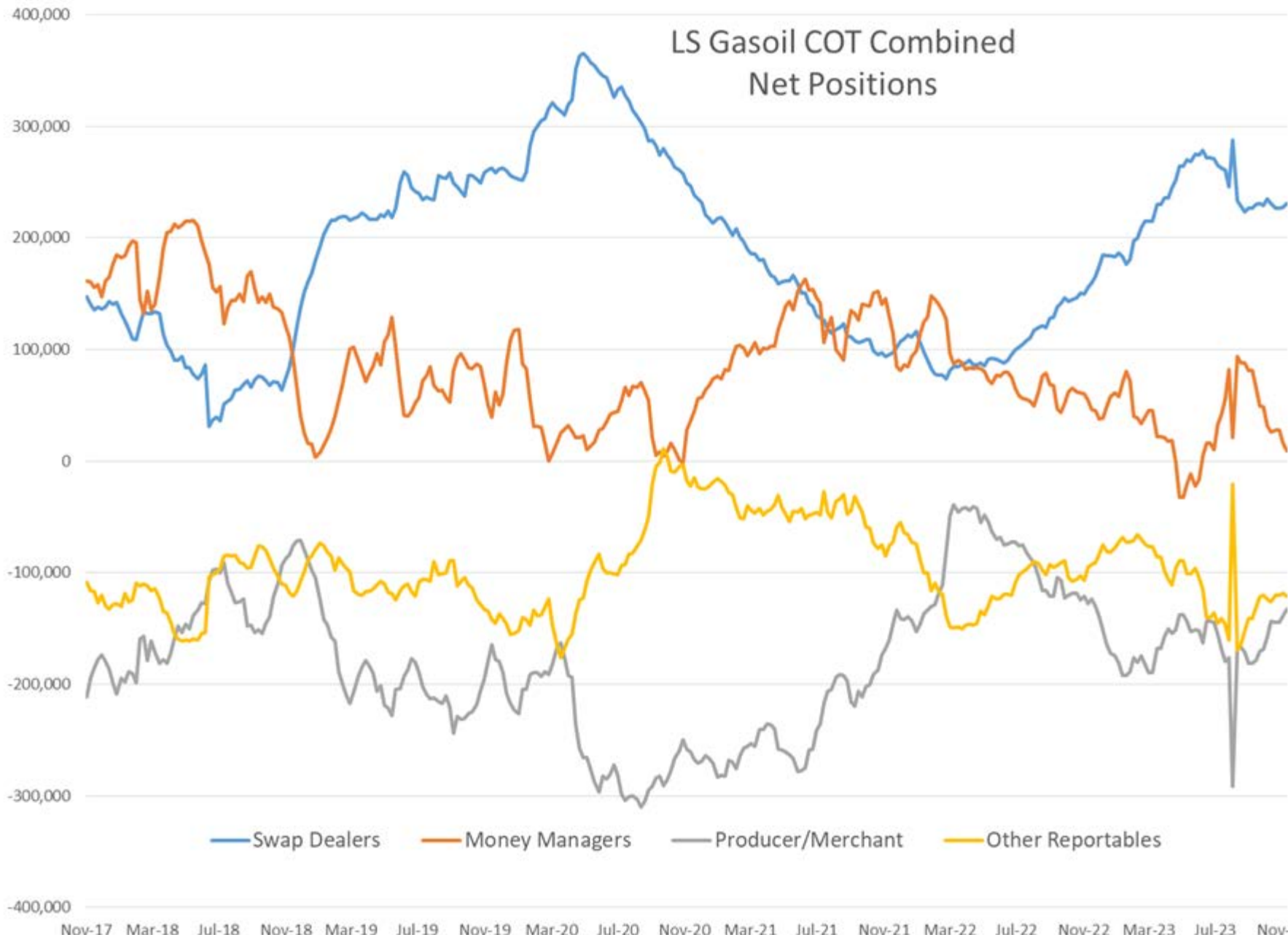
COT Net Positions - ULSD(HO) Combined



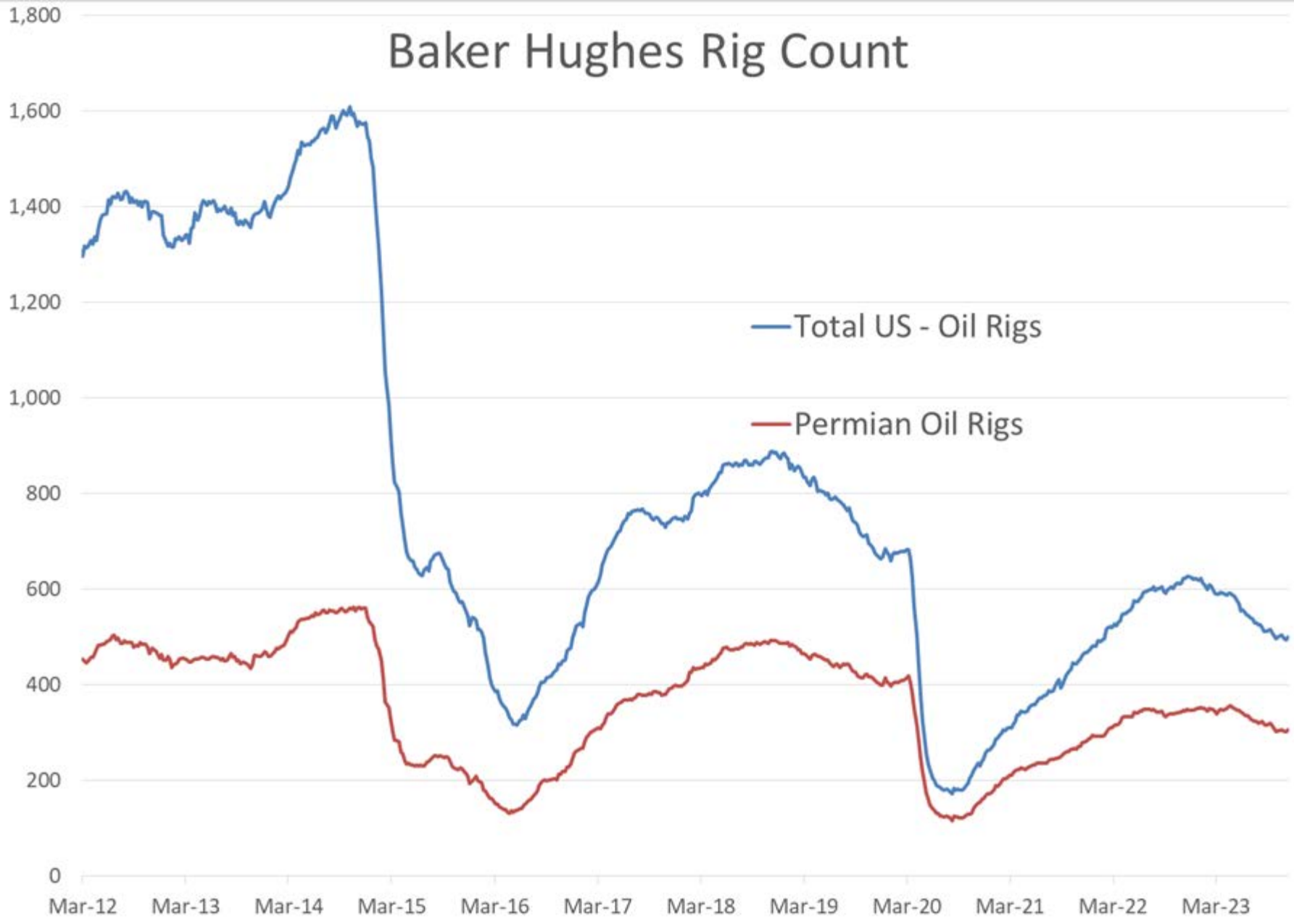
Brent - COT Combined Net Positions



LS Gasoil COT Combined Net Positions



Baker Hughes Rig Count



Baker Hughes - US Natural Gas Rig Count

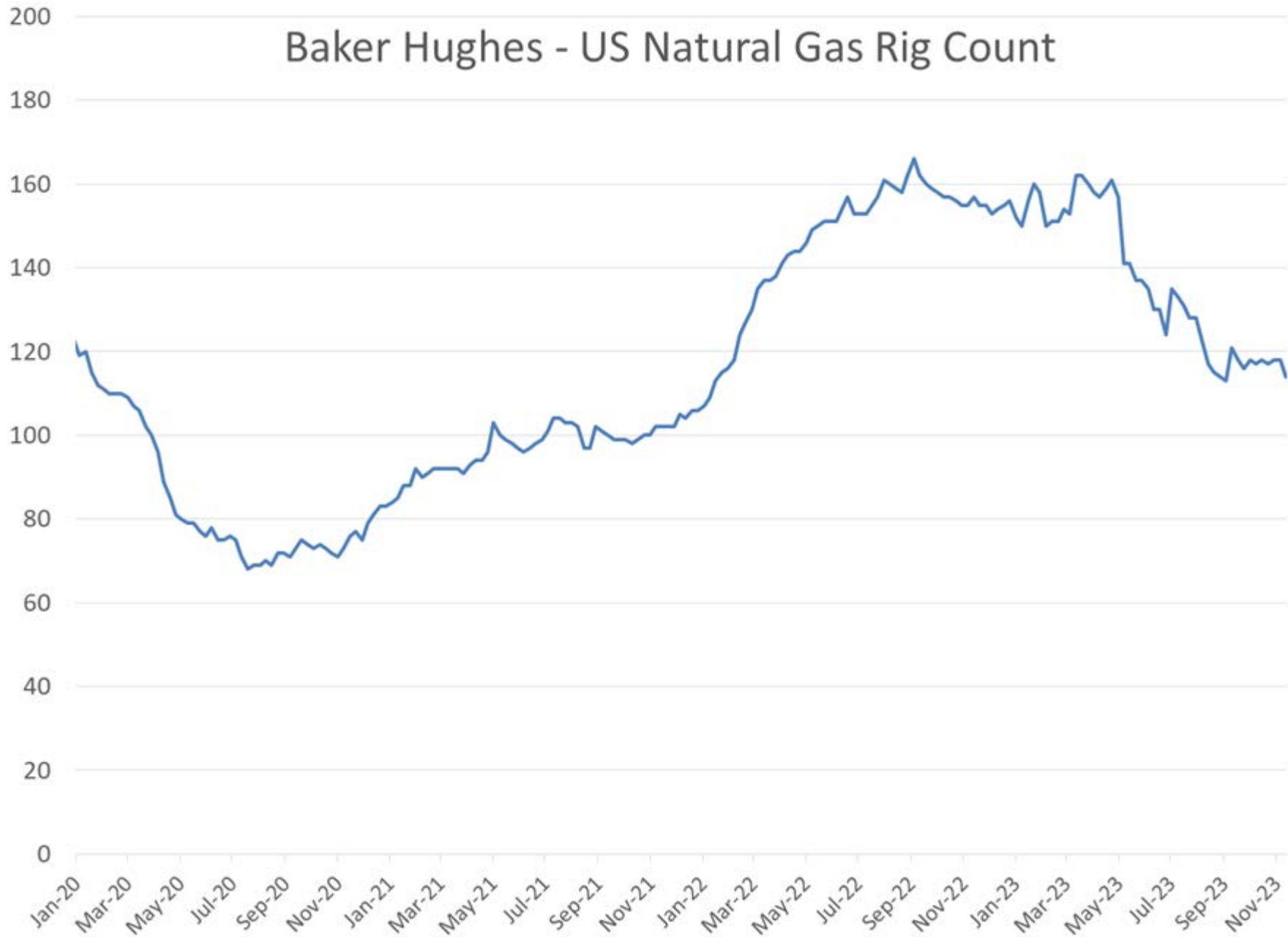


Chart 1

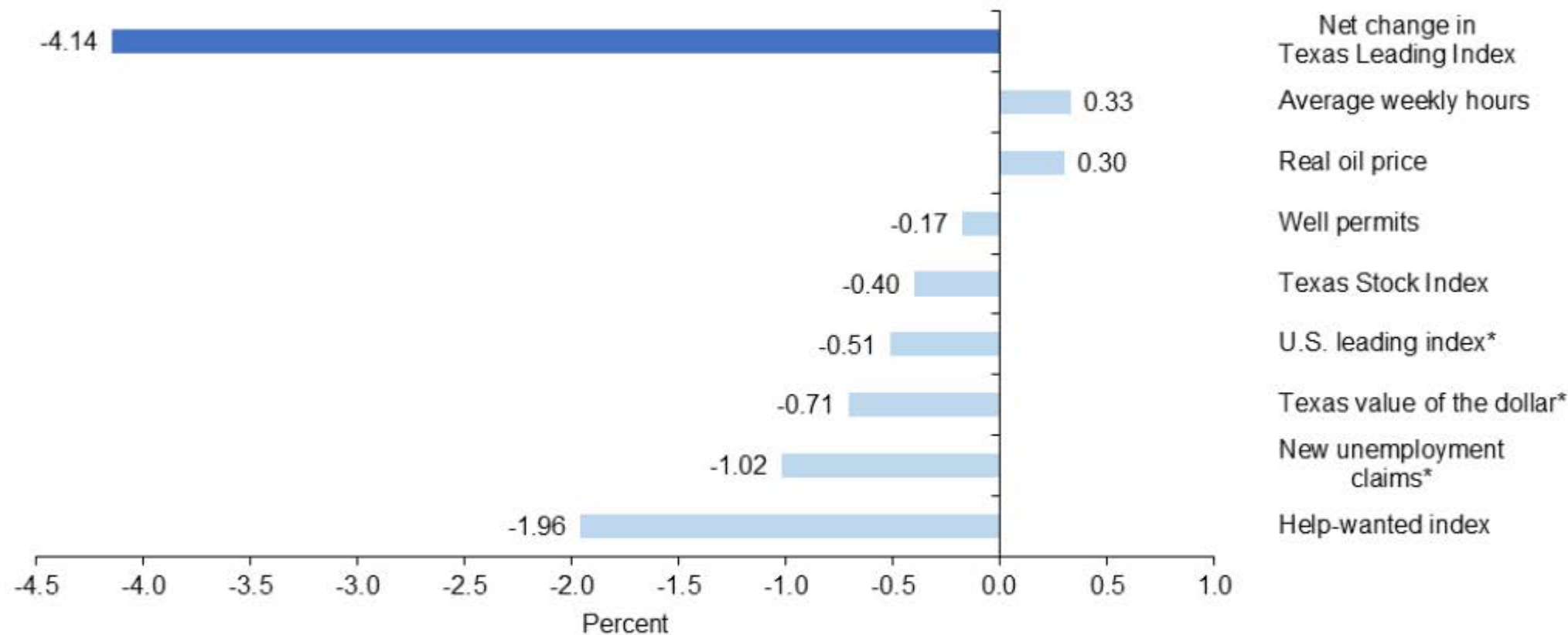
Texas job forecast points to 3.2 percent growth in 2023, employment of 14.1 million at year end



*Seasonally adjusted.

SOURCES: Bureau of Labor Statistics; Texas Workforce Commission; Federal Reserve Bank of Dallas.


Chart 2
Leading index falls with majority of components declining
(Net contributions to change in Texas Leading Index)



*This component has been estimated for the latest month.

NOTES: The chart shows percent changes from July to October, seasonally adjusted. The Texas value of the dollar is a preliminary estimate from the Dallas Fed. For additional information, see dallasfed.org/research/econdata/tli.

SOURCES: Federal Reserve Bank of Dallas; Bureau of Labor Statistics; Conference Board; Texas Workforce Commission; *The Wall Street Journal*; Energy Information Administration; Texas Railroad Commission.

Your search returned 37 records. You may also view and save this list with additional fields (county, region) as an  [Excel spreadsheet](#).

1-37 of 37 Records

Incident # ▼	RN	RE Name	Began	Ended	Event Type	Report Type	Report Date	Associated Customer
412998	RN102535077	BLANCHARD REFINING GALVESTON BAY REFINERY	11/18/2023 05:40 AM	11/18/2023 06:40 AM	EMISSIONS EVENT	INITIAL	11/18/2023	CN604166868 BLANCHARD REFINING COMPANY LLC
412711	RN102535077	BLANCHARD REFINING GALVESTON BAY REFINERY	11/10/2023 04:00 PM	11/10/2023 05:00 PM	EMISSIONS EVENT	INITIAL	11/10/2023	CN604166868 BLANCHARD REFINING COMPANY LLC
411088	RN102535077	BLANCHARD REFINING GALVESTON BAY REFINERY	10/11/2023 01:00 PM	10/11/2023 06:00 PM	EMISSIONS EVENT	FINAL	10/25/2023	CN604166868 BLANCHARD REFINING COMPANY LLC
410829	RN102535077	BLANCHARD REFINING GALVESTON BAY REFINERY	10/06/2023 11:00 AM	10/06/2023 01:00 PM	EMISSIONS EVENT	FINAL	10/17/2023	CN604166868 BLANCHARD REFINING COMPANY LLC
410650	RN102535077	BLANCHARD REFINING GALVESTON BAY REFINERY	10/03/2023 07:00 AM	10/03/2023 07:00 PM	EMISSIONS EVENT	FINAL	10/17/2023	CN604166868 BLANCHARD REFINING COMPANY LLC
410224	RN102535077	BLANCHARD REFINING GALVESTON BAY REFINERY	09/22/2023 02:20 AM	09/22/2023 07:53 AM	EMISSIONS EVENT	FINAL	10/05/2023	CN604166868 BLANCHARD REFINING COMPANY LLC
409895	RN102535077	BLANCHARD REFINING GALVESTON BAY REFINERY	09/14/2023 10:15 AM	09/14/2023 02:00 PM	EMISSIONS EVENT	FINAL	09/28/2023	CN604166868 BLANCHARD REFINING COMPANY LLC
409588	RN102535077	BLANCHARD REFINING GALVESTON BAY REFINERY	09/07/2023 07:25 PM	09/07/2023 08:44 PM	EMISSIONS EVENT	FINAL	09/21/2023	CN604166868 BLANCHARD REFINING COMPANY LLC
409275	RN102535077	BLANCHARD REFINING GALVESTON BAY REFINERY	08/31/2023 09:30 PM	09/01/2023 01:30 AM	EMISSIONS EVENT	FINAL	09/13/2023	CN604166868 BLANCHARD REFINING COMPANY LLC