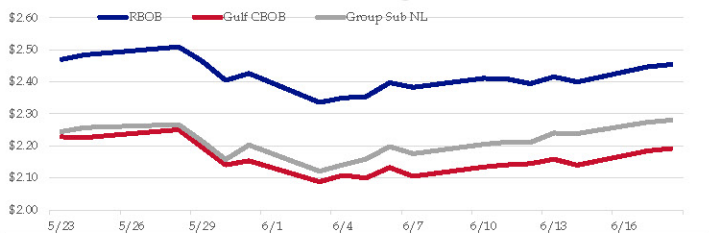


Gasoline

	RBOB	Change	Gulf CBOB	Change	Group Sub NL	Change	Gulf Basis	Group Basis	LA Basis
6/18	\$2.4538	\$0.0069	\$2.1917	\$0.0072	\$2.2802	\$0.0064	\$ (0.2626)	\$ (0.1739)	\$ 0.0195
6/17	\$2.4469	\$0.0473	\$2.1845	\$0.0447	\$2.2738	\$0.0353	\$ (0.2624)	\$ (0.1731)	\$ 0.0210
6/14	\$2.3996	-\$0.0160	\$2.1398	-\$0.0186	\$2.2386	-\$0.0017	\$ (0.2598)	\$ (0.1611)	\$ 0.0210
6/13	\$2.4156	\$0.0212	\$2.1584	\$0.0142	\$2.2402	\$0.0293	\$ (0.2572)	\$ (0.1754)	\$ 0.0110
6/12	\$2.3944	-\$0.0145	\$2.1442	\$0.0033	\$2.2110	-\$0.0010	\$ (0.2502)	\$ (0.1835)	\$ (0.0505)
6/11	\$2.4089	-\$0.0020	\$2.1409	\$0.0067	\$2.2119	\$0.0071	\$ (0.2680)	\$ (0.1970)	\$ (0.0603)
6/10	\$2.4109	\$0.0283	\$2.1342	\$0.0292	\$2.2049	\$0.0296	\$ (0.2768)	\$ (0.2061)	\$ (0.0954)
6/7	\$2.3826	-\$0.0149	\$2.1049	-\$0.0274	\$2.1753	-\$0.0224	\$ (0.2777)	\$ (0.2073)	\$ (0.0982)

RBOB Technicals		
Indicator	Direction	Resistance
MACD	Neutral	2.9859 Sep High
Stochastics	Bullish	2.8516 2024 High
RSI	Neutral	2.2985 June Low
ADX	Bullish	2.1365 February Low
Momentum	Neutral	
Bias:	Neutral	

Gasoline History



Gasoline Forward Curve

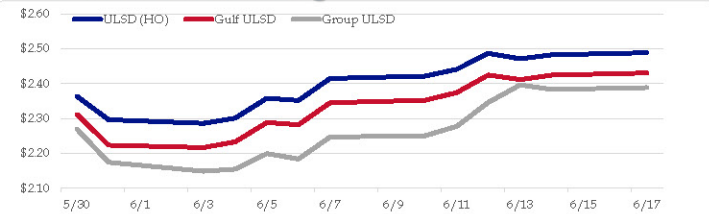


Diesel

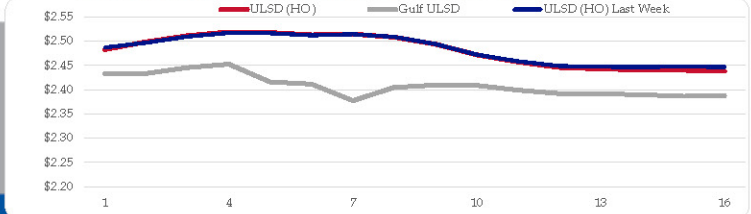
	ULSD (HO)	Change	Gulf ULSD	Change	Group ULSD	Change	Gulf Basis	Group Basis	LA Basis
6/18	\$2.4882	\$0.0057	\$2.4303	\$0.0057	\$2.3882	\$0.0053	\$ (0.0590)	\$ (0.1002)	\$ 0.0005
6/17	\$2.4825	\$0.0119	\$2.4241	\$0.0126	\$2.3829	-\$0.0131	\$ (0.0585)	\$ (0.0996)	\$ (0.0005)
6/14	\$2.4706	-\$0.0162	\$2.4114	-\$0.0134	\$2.3960	\$0.0502	\$ (0.0592)	\$ (0.0746)	\$ (0.0005)
6/13	\$2.4868	\$0.0460	\$2.4248	\$0.0509	\$2.3458	\$0.0686	\$ (0.0620)	\$ (0.1410)	\$ (0.0005)
6/12	\$2.4408	\$0.0195	\$2.3740	\$0.0219	\$2.2772	\$0.0269	\$ (0.0668)	\$ (0.1637)	\$ 0.0245
6/11	\$2.4213	\$0.0066	\$2.3521	\$0.0072	\$2.2503	\$0.0038	\$ (0.0692)	\$ (0.1711)	\$ 0.0445
6/10	\$2.4147	\$0.0630	\$2.3448	\$0.0628	\$2.2465	\$0.0630	\$ (0.0699)	\$ (0.1683)	\$ 0.0445
6/7	\$2.3517	-\$0.0059	\$2.2820	-\$0.0062	\$2.1835	-\$0.0157			

HO Technicals		
Indicator	Direction	Resistance
MACD	Neutral	3.0476 Nov High
Stochastics	Overbought	2.9735 Feb High
RSI	Neutral	2.2566 June Low
ADX	Bullish	2.1500 April 2023 Low
Momentum	Bullish	
Bias:	Neutral	

Diesel History



Diesel Forward Curve



Crude

	WTI	Change	Brent	Change
6/18	\$80.24	-\$0.09	\$84.31	\$0.06
6/17	\$80.33	\$1.88	\$84.25	\$1.63
6/14	\$78.45	-\$0.17	\$82.62	-\$0.13
6/13	\$78.62	\$0.12	\$82.75	\$0.15
6/12	\$78.50	\$0.60	\$82.60	\$0.97
CPL	Line 1	Change	Line 2	Change
space	0.0775	\$0.0050	-\$0.0145	\$0.0012

Refinery Margins

Vs WTI				Vs Brent				Group / WCS	
Gulf Gas	Gulf Diesel	3/2/1	5/3/2	Gulf Gas	Gulf Diesel	3/2/1	5/3/2	3/2/1	
\$11.42	\$21.48	\$14.77	\$15.44	\$7.50	\$17.56	\$10.85	\$11.52	\$	30.58
\$11.42	\$22.83	\$15.22	\$15.98	\$7.25	\$18.66	\$11.05	\$11.81	\$	29.77
\$12.03	\$23.22	\$15.76	\$16.51	\$7.90	\$19.09	\$11.63	\$12.38	\$	28.95
\$11.56	\$23.21	\$14.77	\$15.42	\$7.46	\$17.11	\$10.67	\$11.32	\$	27.29
\$12.02	\$20.89	\$14.97	\$15.57	\$8.29	\$17.16	\$11.24	\$11.84	\$	27.54

Economic Indicators

Commodity Futures

	Settle	Change		Settle	Change
S&P 500 Futures	5,478	-\$0.75	US NatGas	2.881	-\$0.093
DJIA	38,778		TTF NatGas	10.76	-\$0.3
Nasdaq 100	19,903	242.95	Gold	2,312	-\$0.6
EUR/USD	1.0750	-\$0.0008	Silver	29.33	
USD Index	104.94	0.01	Copper	429.20	5.150
US 10 YR YIELD	4.20%	-\$0.04	FCOJ	1157.75	4.25
US 2 YR YIELD	4.67%	-\$0.01	Wheat	591.50	-\$2.50
Oil Volatility Index (OVX)	24.71	-\$0.54	Butane	0.900	0.003
S&P Volatility Index (VIX)	18.00	0.71	Propane	0.749	-\$0.002
Nikkei 225 Index	38,470	-\$40.00	Feeder Cattle	261.3	
			Bitcoin	66,865	-\$1,590

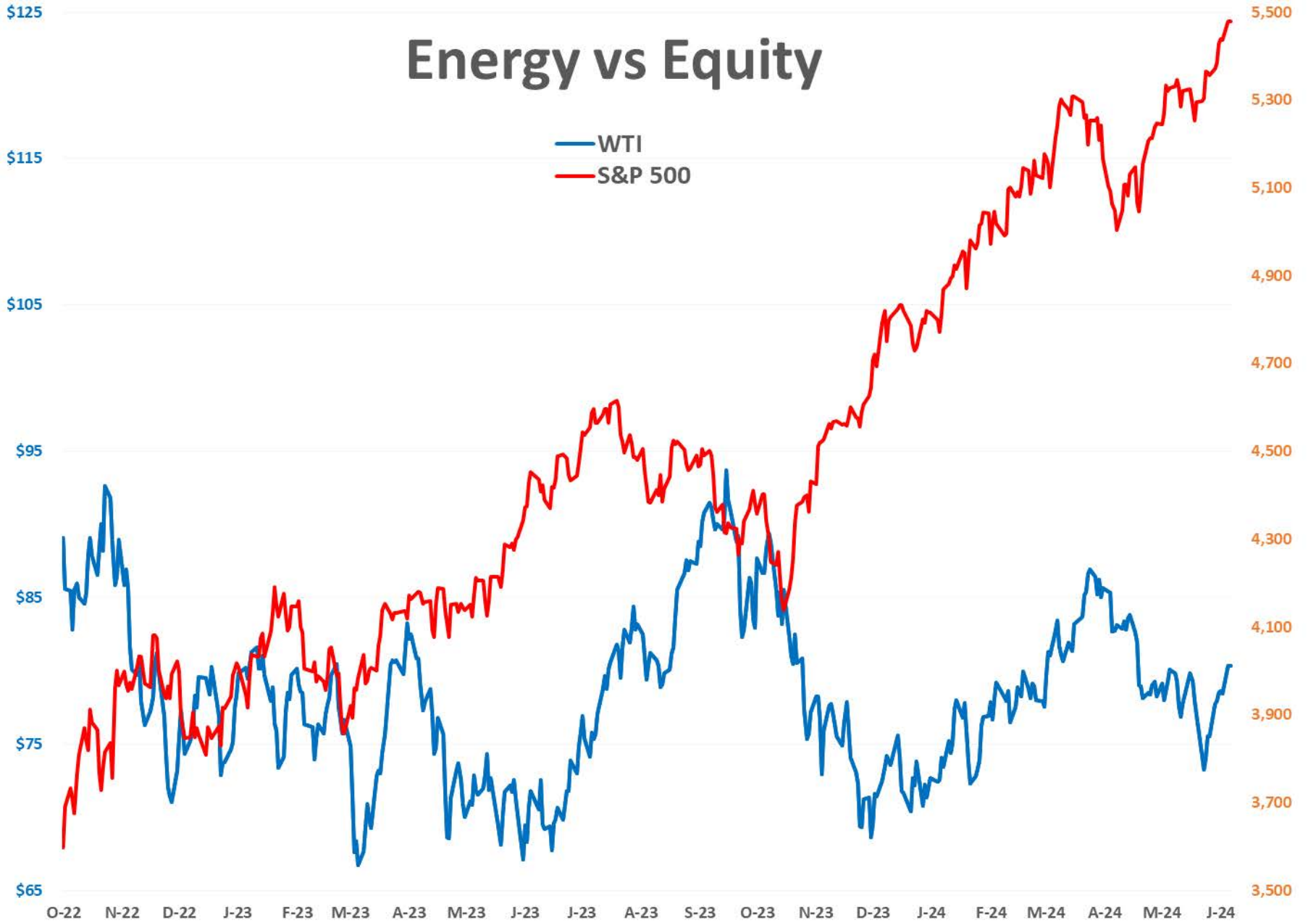
RINs and Price Drivers

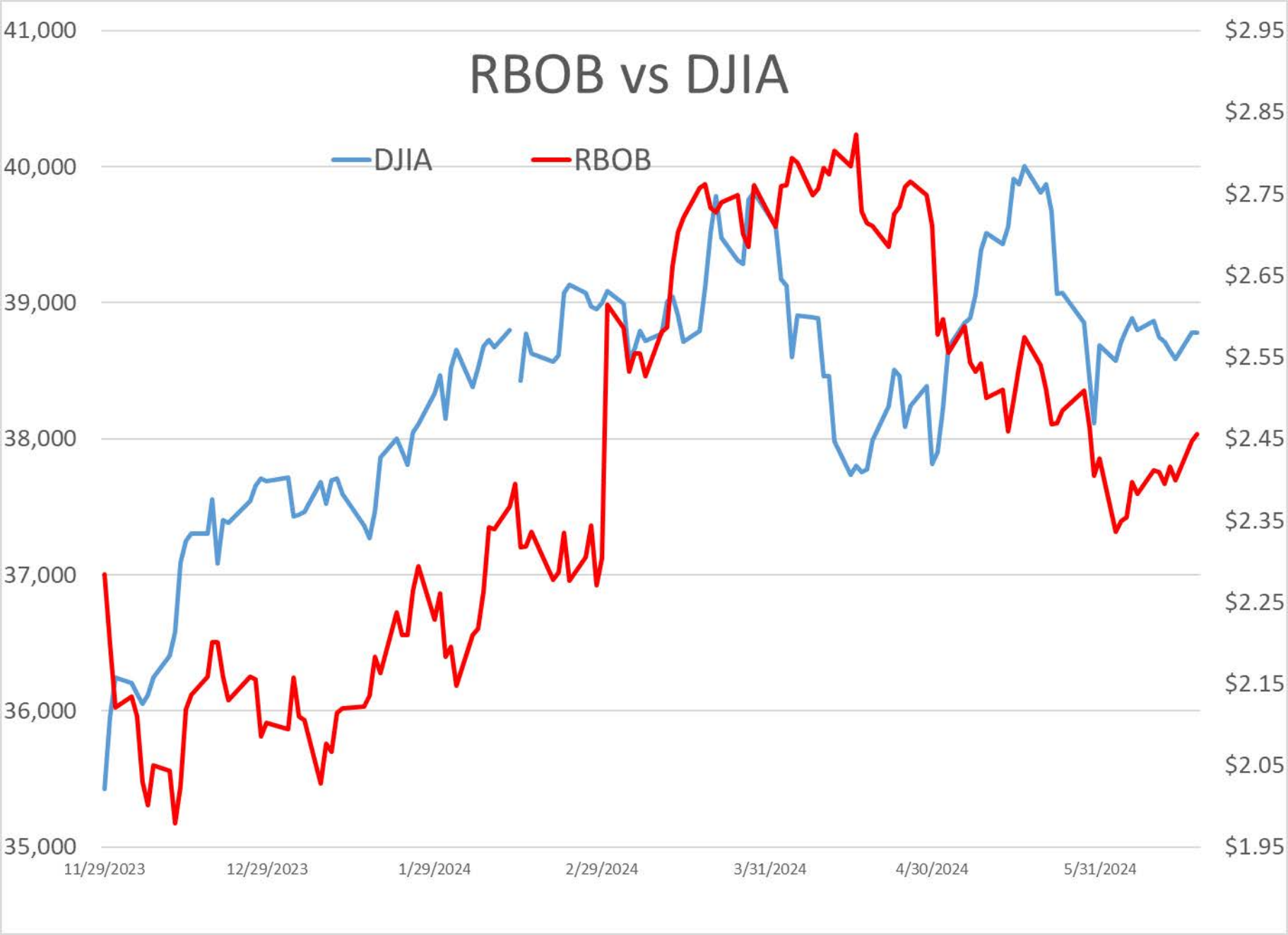
Current Year Bio RINs (D4)			Current Year Ethanol RINs (D6)		
	Settle	Net Change		Settle	Net Change
	0.5495	-\$0.006		0.5460	-\$0.007
Price Drivers			Price Drivers		
Soybeans	1157.75	4.250	Ethanol	1.92	-\$0.014
Soybean Oil	43.73	0.020	Com	443.75	3.000
BOHO Spread	0.797		Com Crush	0.339	
Soy Crush	477.38		RVO Estimate		
			Per Gallon	\$ 0.0730	\$ (0.0010)
			Per Barrel	\$ 3.07	\$ (0.04)

*SOURCES: Nymex, CBOT, NYSE, ICE, NASDAQ, CME Group, CBOE. Prices delayed.

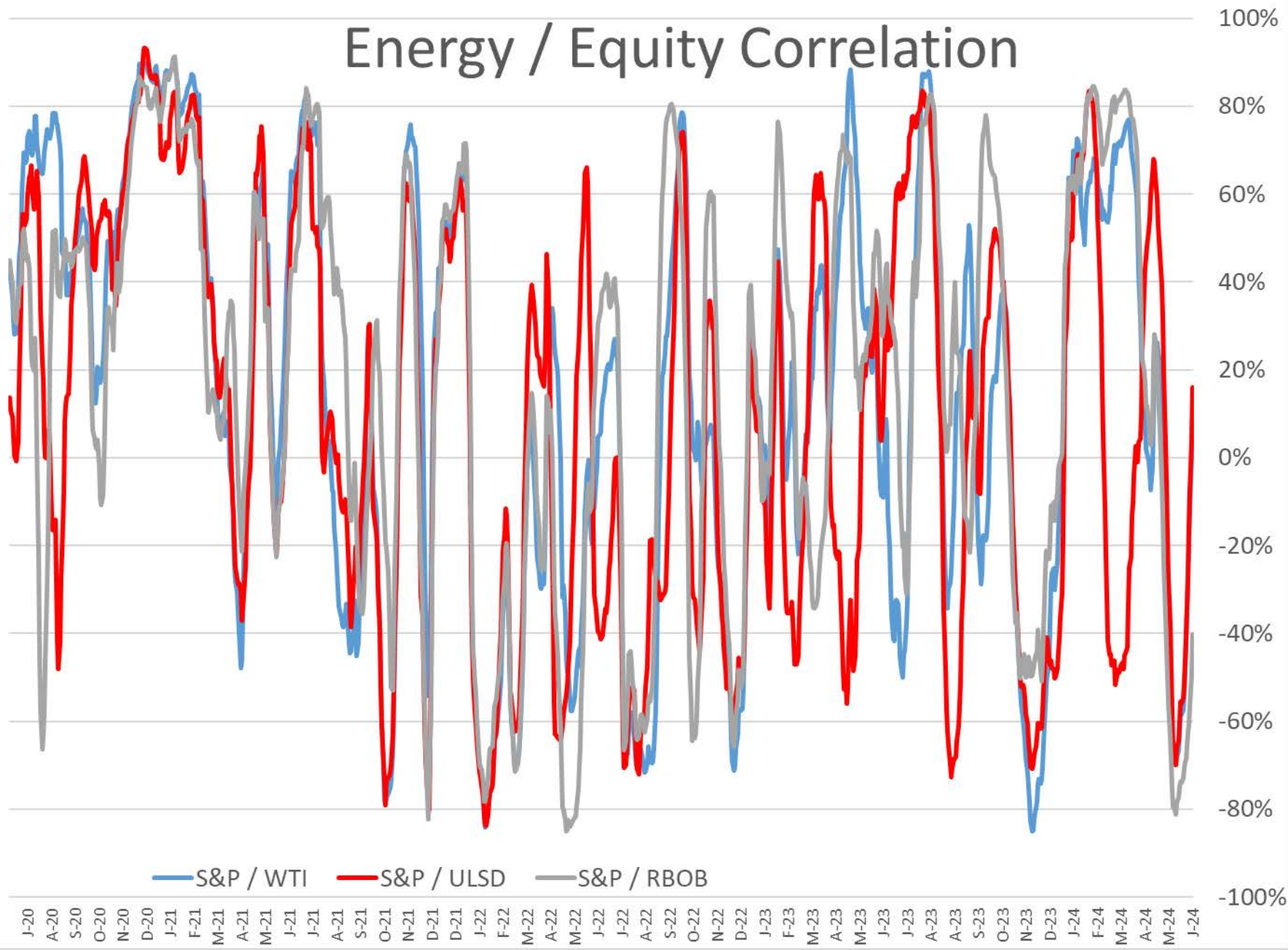
Disclaimer: The information contained herein is derived from multiple sources believed to be reliable. However, this information is not guaranteed as to its accuracy or completeness. No responsibility is assumed for use of this material and no express or implied warranties or guarantees are made. This material and any view or comment expressed herein are provided for informational purposes only and should not be construed in any way as an inducement or recommendation to buy or sell products, commodity futures or options contracts.

Energy vs Equity





Energy / Equity Correlation





Key Messages for Potential Tropical Cyclone One

Advisory 3: 4:00 AM CDT Tue Jun 18, 2024

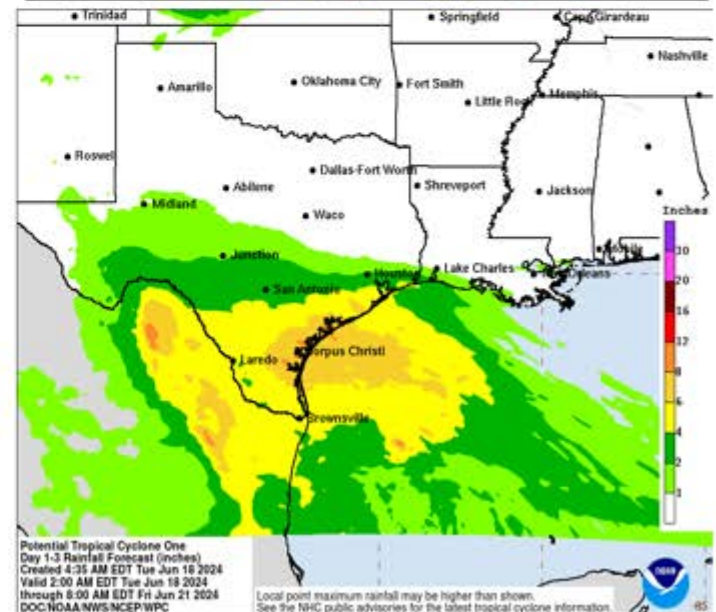


1. Users are reminded not to focus on the exact forecast track of this system. The disturbance is very large with rainfall, coastal flooding, and wind impacts likely to occur far from the center along the coasts of Texas and northeastern Mexico.

2. Rainfall associated with Potential Tropical Cyclone One will impact large regions of Central America, northeastern Mexico and South Texas. This rainfall will likely produce considerable flash and urban flooding along with new and renewed river flooding. Mudslides are also possible in areas of higher terrain across Central America into northeast Mexico.

3. Moderate coastal flooding is likely along much of the Texas Coast beginning this morning and continuing through midweek.

4. Tropical storm conditions are expected beginning Wednesday over portions of the Texas coast south of Port O'Connor, where a Tropical Storm Warning is in effect, and over portions of northeastern Mexico.



For more information go to hurricanes.gov

Central Pacific

Eastern Pacific

Atlantic

Disturbances: ALL [1] [2]



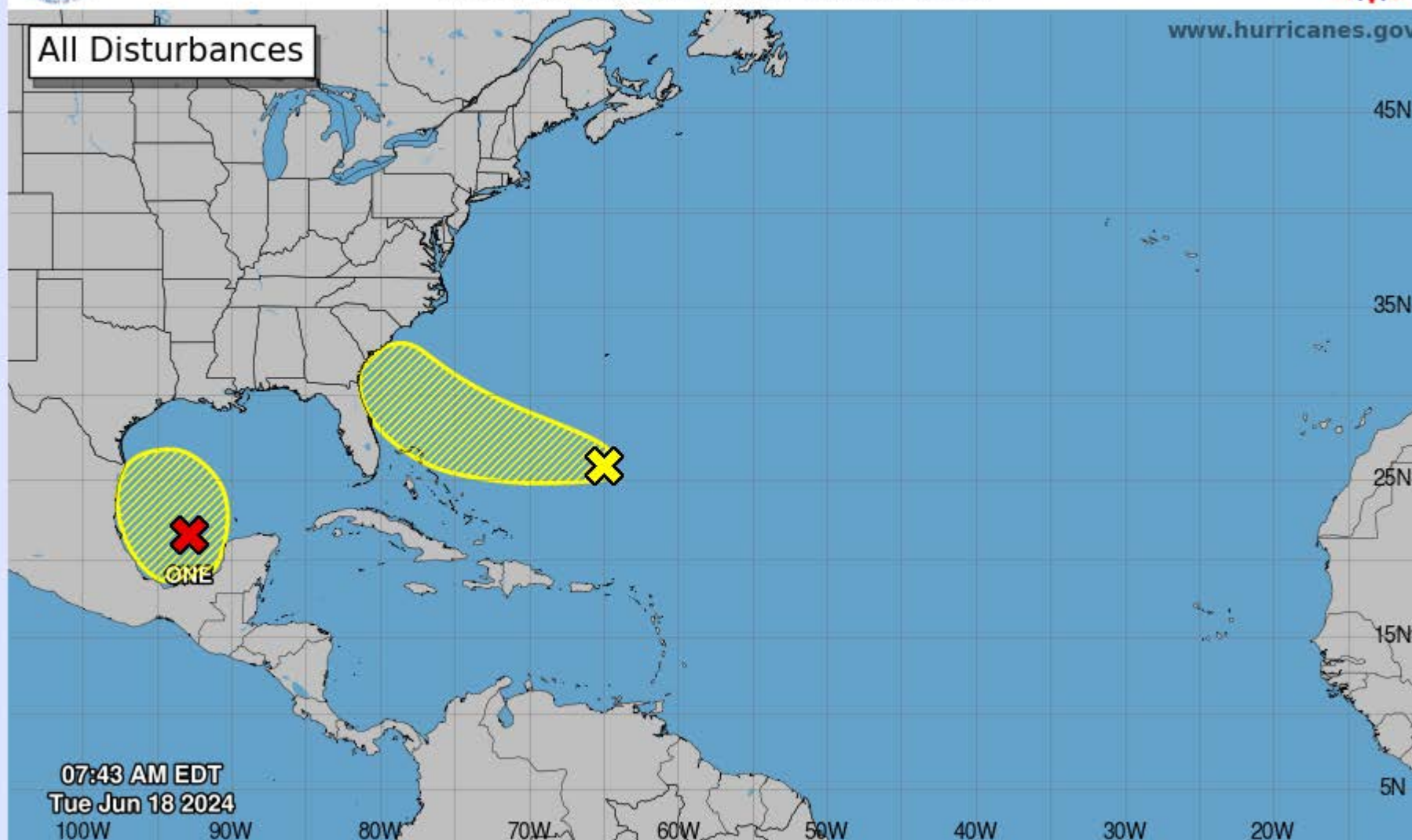
Seven-Day Graphical Tropical Weather Outlook

National Hurricane Center Miami, Florida



www.hurricanes.gov

All Disturbances



07:43 AM EDT
Tue Jun 18 2024

Current Disturbances and Seven-Day Cyclone Formation Chance: < 40% 40-60% > 60%

Tropical or Sub-Tropical Cyclone: Depression Storm Hurricane

Post-Tropical Cyclone or Remnants