

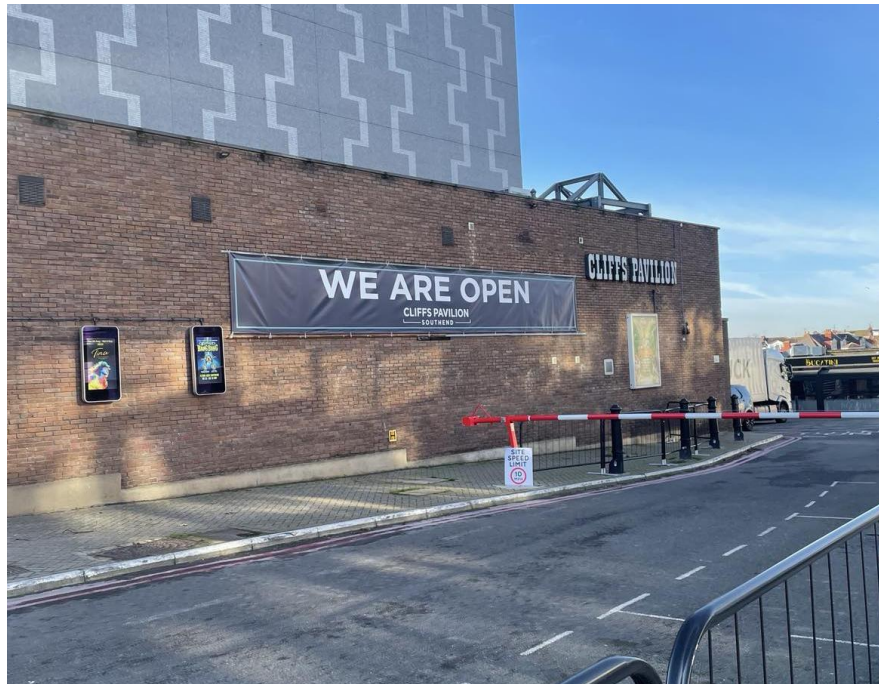
CLIFFS PAVILION SOUTHEND

Visual Story

A step-by-step guide for your visit to the Cliffs Pavilion (2024 – 2025)

I am going with _____ to see _____ at the Cliffs Pavilion in Southend on Sea.

This is the outside of the Cliffs Pavilion. We are currently undergoing a refurbishment project, meaning the building looks a little bit different to usual. This guide will show you all of the entrances, exits and different routes to move around the building when you are here, during this time.



You can enter the building through a choice of 4 doors. You can find these by following the arrows and signs when you arrive at the theatre. There will also be staff available (most likely in a bright high vis jacket) who can signpost you in the right direction as well.

CLIFFS PAVILION

SOUTHEND

If you enter the theatre through one of the doors, on our Lower Ground Floor, that look like this...



You will then be on the level of the building where our Box Office, toilets, lift and function rooms are located. This is what you will see when you walk through the doors photographed above...



If you need to collect your tickets, please wait at the Box Office, there may be a queue (like you can see in the photo), but the staff will serve you as soon as they can.

We have accessible toilets on this level, as well as male and female.

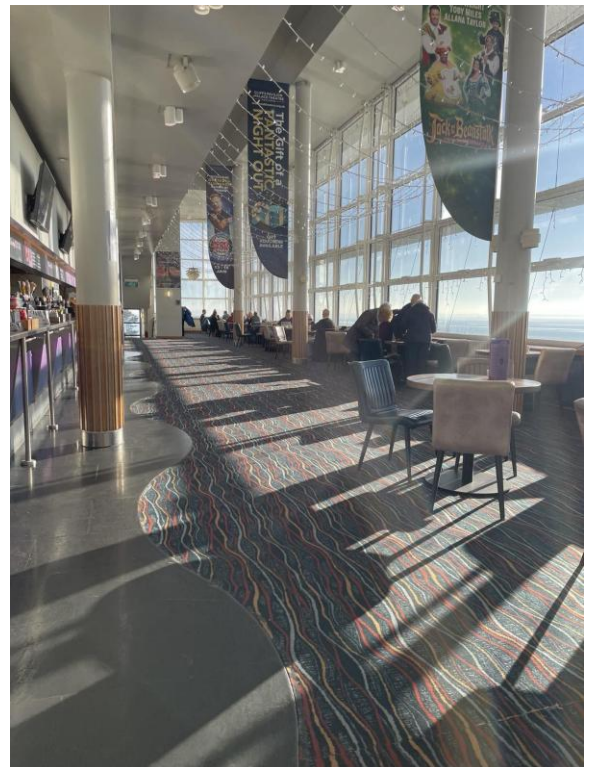
To get to the Ground Floor level of the building, you will need to get into the lift or use the staircase, photographed here...

CLIFFS PAVILION

SOUTHEND



You will then be on our Ground Floor. This is where you can access our café/foyer bar, the auditorium, our merchandise stand and more accessible toilets. In the photos below, you can see the foyer and café/bar area that takes up to the majority of this level...



Here you can buy refreshments, merchandise, programmes, and speak to a member of staff if you have any questions.

In the café/bar area there is another staircase, and another lift access point. If you continue to the next level up, you will enter the Mezzanine Level. Up here is more seating, a bar for refreshments, and the doors to the Balcony and Boxes level of the auditorium.

It is important to check on your ticket which door of the auditorium to enter through, as this will be closest to your seat. All of our doors are numbered.

CLIFFS PAVILION

SOUTHEND

Here you can see photos of the Mezzanine Level...



Here are some examples of the doors you can enter through to find your auditorium seat/s...



Once you are ready for the show, you can enter the auditorium and prepare for the show to begin.

Remember if you don't have your Visual Story with you, or you aren't sure of your whereabouts in the building, or where something is at any point, we have plenty of Front of House and Hospitality staff working throughout your visit. They are always happy to answer your questions and help you.

If you have any questions before your visit, you can email our Creative Learning Manager via emmawa@southendtheatres.org.uk

Enjoy the show!