

# CLIFFS PAVILION SOUTHEND

## Visual Story – Cliffs Pavilion

I am going with \_\_\_\_\_ to see \_\_\_\_\_ at The Cliffs Pavilion in Southend on Sea.

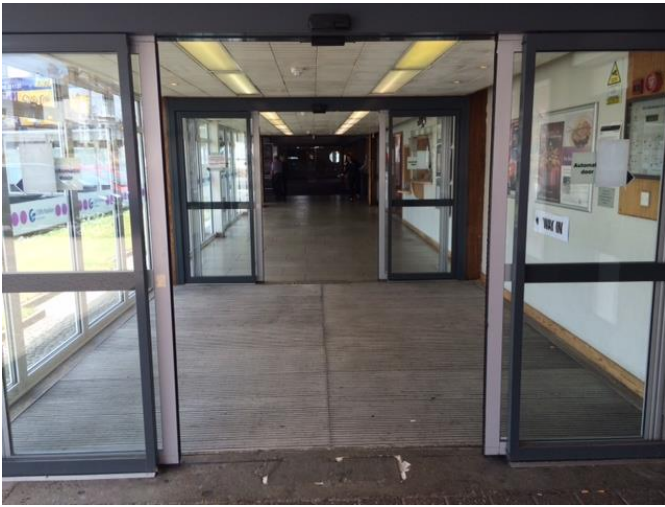


Seeing a show is a lot like seeing something on TV, or a movie. But the people in a show are right there on the stage, they are called actors.

# CLIFFS PAVILION

## SOUTHEND

When I get to the theatre, I will see the Welcome Desk and some signs that say *Cliffs Pavilion* and a lot of posters. They will look like this:



We may have to stand in line to collect our tickets. I will stand nicely and quietly while we wait. The person at the desk will tell us where we will go when the show is going to start.

Before going to our seats I can use the bathroom. If I need the bathroom, I can ask.

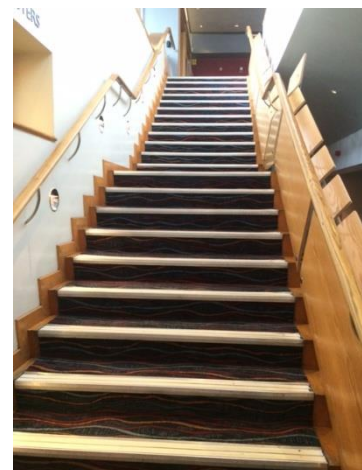
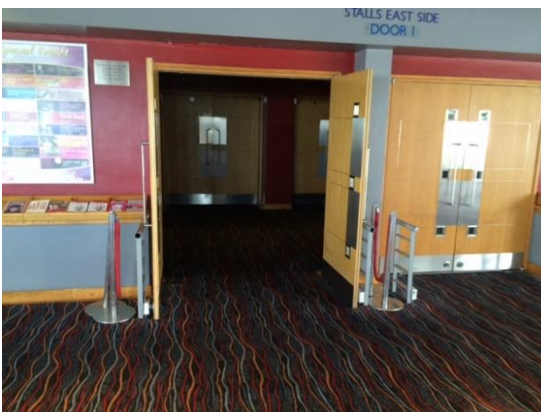


# CLIFFS PAVILION SOUTHEND

I will also see the café where we can buy drinks and snacks. If I need a drink or snack, I can ask. If we need to wait before going into the theatre and I want to sit down, I can ask. I will sit nicely and quietly.



Then we will go inside the theatre. I may need to go up or down stairs. If I do not want to use the stairs I can use the lift.



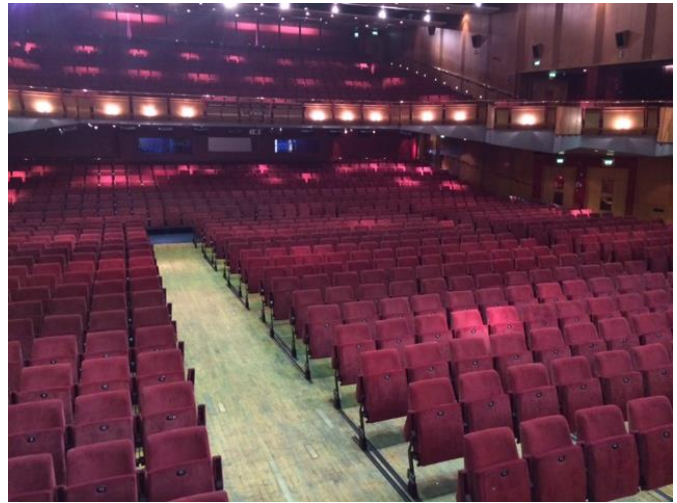
We will show our tickets to a person called an usher. The usher will tell us which seats to go to.



# CLIFFS PAVILION

## SOUTHEND

The theatre is very big. There are lots of seats in the theatre. The numbers on the tickets tell us where we have to sit. It is not a choice.



When we get to our seats, I will sit nicely. I will sit in a booster seat if I need one to see the show.



When it is time for the show to start, someone will ask everyone to turn off their phones. The theatre will get darker and everyone will get quiet. I will try to be as quiet as I can during the show so that I can hear everything.



# CLIFFS PAVILION

## SOUTHEND

When the show starts, it might be loud. If it is too loud, I can cover my ears, wear my headphones or hold parent or carer's hand.



In the show I will see people called actors on stage. Some of the actors may be wearing costumes and makeup, like on Halloween.

If I feel afraid or nervous, I can cover my ears, hold my parent/carer's hand or speak to my parent/carer or a member of staff.



# CLIFFS PAVILION

SOUTHEND

I will have a lot of fun at the show! Sometimes it will be loud. If it is too loud, I can cover my ears wear my headphones or hold my parent/carer's hand. I know even though the show can be loud and can feel scary, none of the noise can hurt me.



After a song or something funny, some people will clap.



Clapping is nice because it tells the actors you liked their song or acting. If I want to clap, I can. I don't have to clap if I don't want to. If the clapping is too loud, I can cover my ears, wear my headphones or hold mummy or daddy's hand.



# CLIFFS PAVILION

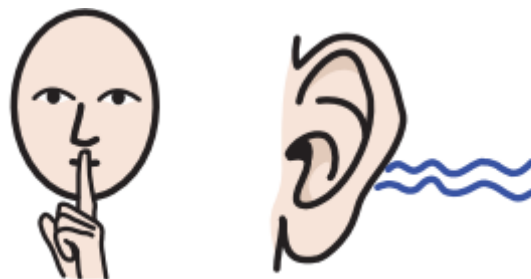
## SOUTHEND

In the middle of the show, we might have a break. This break is called an interval. During the break, many people will stand up to go get a drink or use the bathroom. If I want to, I can ask for a snack or a drink.

I can ask to use the bathroom if I need to and I might see the ushers selling drinks and ice creams in the theatre. I can ask if I want an ice cream.



After the break, everyone will come back and sit down in their seats again. It will get darker and quieter just like at the beginning of the show. The actors will come back on stage and continue with the show.



# CLIFFS PAVILION

## SOUTHEND

At the end of the show, all the actors will come out on stage. This is called a curtain call. Many people will clap a lot so the actors know how much they liked the show.



If I want to clap, I can. I don't have to clap if I don't want to. If the clapping is too loud I can cover my ears, wear my headphones or hold my parent/carer's hand.



After the show is over, we will go back outside the theatre. There will be a lot of people. If I want to wait for the crowd to get smaller I can wait in my seat. I will wait nicely and quietly. I may need to stand up to let other people past.

We hope that you enjoy your visit to the Cliffs Pavilion.

If you have any questions or concerns prior to your visit, you are welcome to speak to our Front of House or Creative Learning Team, or our Contact Centre who will do what they can to help you.

Contact Centre: 0343 310 0030

Creative Learning: [emmawa@southendtheatres.org.uk](mailto:emmawa@southendtheatres.org.uk)