

"SPRUCE"  
TOWNHOME  
12



OVERLOOK AT  
LINDEN RUN 

\*Image used for illustration purposes



4793 HOGAN DRIVE, WILMINGTON, DE 19808

Coming Soon! \$628,816    3 bedroom | 2.5 bathroom | 2-car garage | Red Clay Consolidated School District

Take in the view while sipping your morning coffee at The Overlook at Linden Run. This new community offers 17 luxury style 2 car garage townhomes with modern open floor plans, customizable finishes, available elevators and a low maintenance lifestyle. Steps away from the shopping and dining in Pike Creek, easy access to major highways and located in the award-winning Red Clay Consolidated School District, The Overlook at Linden Run offers exceptionally convenient living. Greenville, Trolley Square, Kennett Square, Wilmington Station, and the Riverfront are all located less than 10 miles away. The Overlook at Linden Run is the new home you have been waiting for!

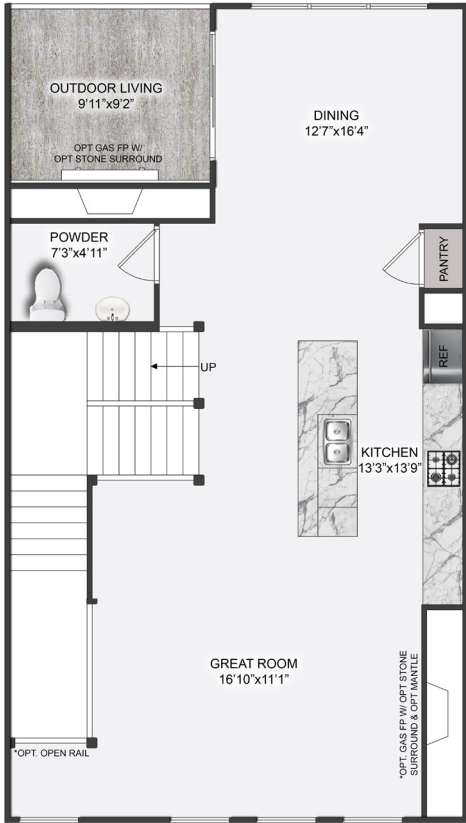
- Stone to grade
- Pella Windows
- Hardwood Floor Entire Main Level
- Traditional Interior Trim
- Traditional Staircase
- Gourmet Kitchen Island
- Samsung Stainless Steel Kitchen Appliances
- Granite Countertops Throughout
- Tray Ceiling in Master Bedroom
- Ceramic Tile Tub/Shower Walls
- Deluxe Rear Walk-out Lower Level
- Finished Basement Rec Room
- Luxury HVAC & Electrical Package



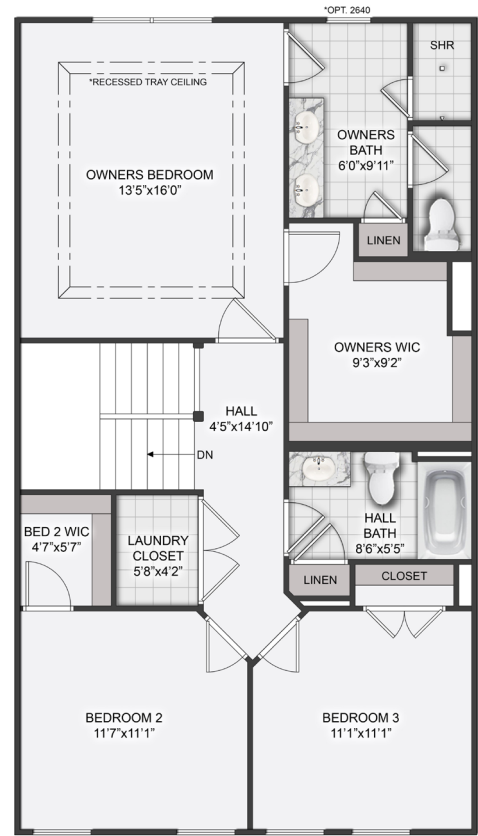
# "SPRUCE" TOWNHOME 12

4793 Hogan Drive, Wilmington, DE 19808

FIRST FLOOR

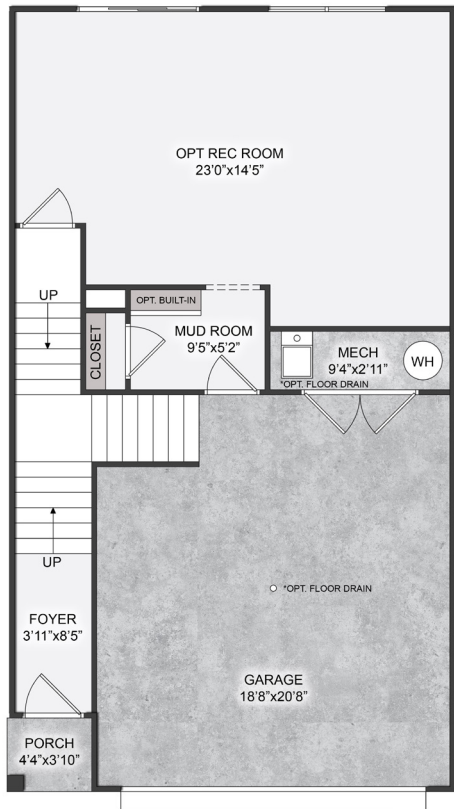


SECOND FLOOR



\*Images used for illustration purposes

LOWER LEVEL



*EH* EDDY HOMES  
EST. 1971

SCHEDULE AN APPOINTMENT

Email: [phillysales@eddyhomes.com](mailto:phillysales@eddyhomes.com)

Call: 888-805-EDDY

[OverlookAtLindenRun.com](http://OverlookAtLindenRun.com)



*Scan Here*