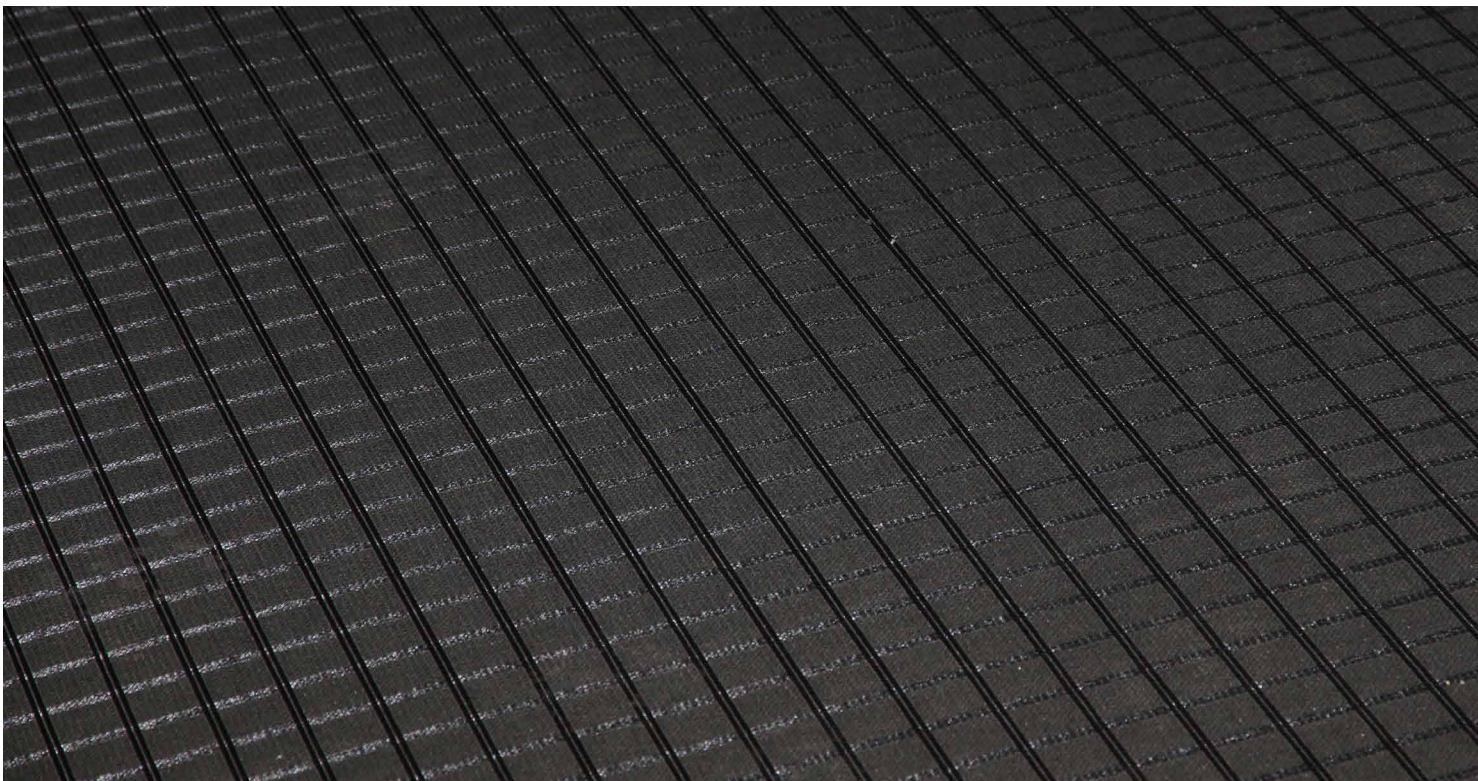


# ProGrid® Compo GC Polyester Geogrid Composites

## Polyester Asphalt Geogrid Composite

Provides a good bond with asphalt in managing reflective / stress cracks



### Product Information

ProGrid® Compo GC is a high modulus Polyester (PET) geogrid which is fully stitch bonded with an integral permanent Polyester (PET) lightweight porous nonwoven geotextile backing promoting a greater surface area bond and superior ease of installation benefits. The geogrid composite has a bituminous coating to provide a good bond with asphalt layers with increased chemical resistance. ProGrid® Compo GC series can not only increase the tensile strength of the asphalt layer(s) and extend the service life of pavement layer(s), but also decreases the occurrence rate, magnitude and severity of reflective cracking under cyclic traffic loads including the retardation of stress cracks associated with joint interfaces. With a high modulus, high temperature resistance and high bonding properties, ProGrid® Compo GC can be used below asphalt overlays or as an asphalt interlayer in new roads or rehabilitation works for reinforcement.

### Applications

- Local road and highway pavements
- Composite pavements
- Airport pavements
- Road resurfacing, widening and repair
- Joint interfaces

# ProGrid® Compo GC Polyester Geogrid Composites

## Product Data Sheet

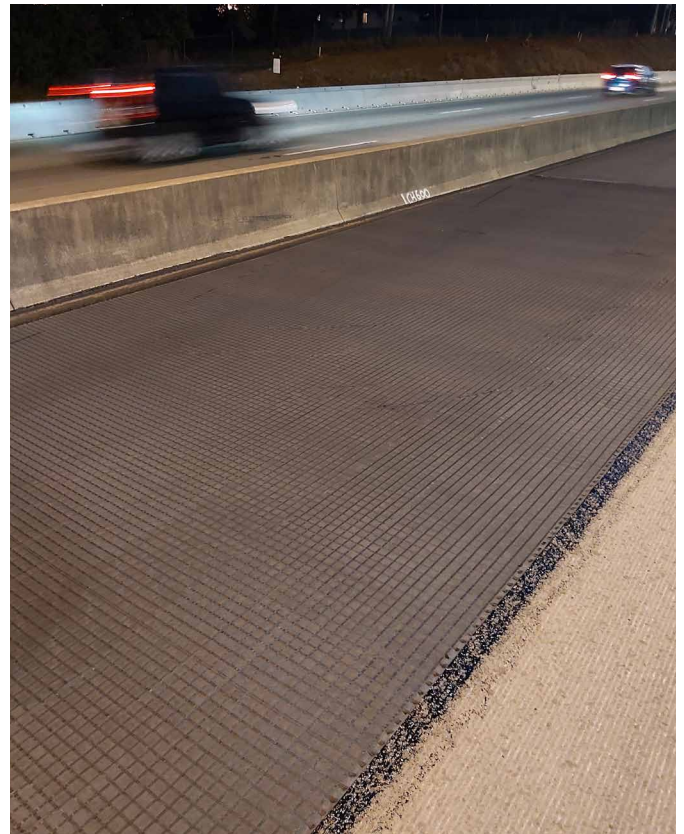
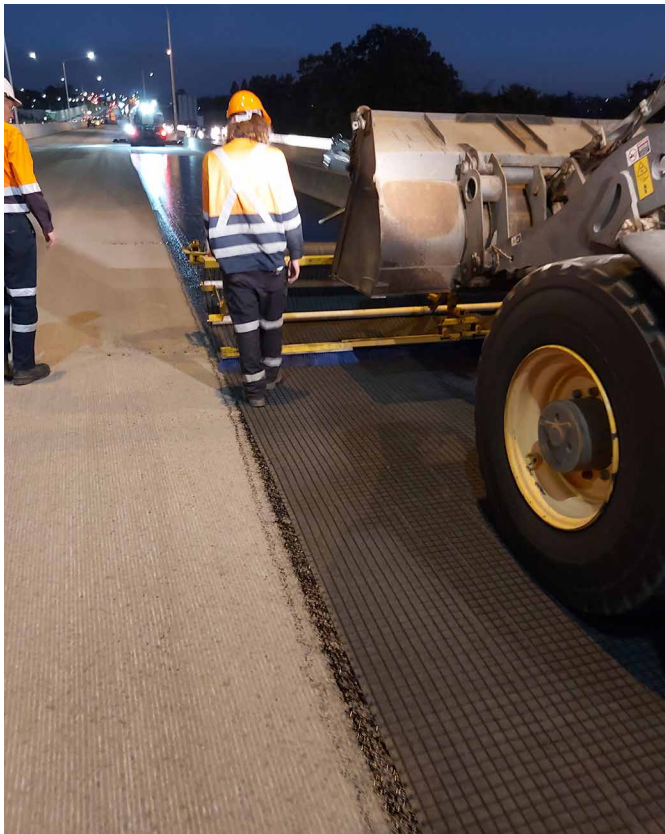
## Product Grade

Typical Properties	Test Method	Units	GC 50/50	GC 100/100
Ultimate Tensile Strength (MD/CMD)	ASTM D6637	kN / m	≥ 50 / 50	≥ 100 / 100
Elongation at Break (MD/CMD)	ASTM D6637	%	≤ 12 / 12	≤ 12 / 12
Tensile Strength at 2% elongation (MD/CMD)	ASTM D6637	kN / m	≥ 10 / 10	≥ 17 / 17
Aperture Size		mm	33	33
Installation Damage Resistance	EN ISO 10722	%	≥ 90	≥ 90
Melting Point	ASTM D276-00a	°C	≥ 250	≥ 250
Standard Geotextile Mass*	AS 3706.1	g / m <sup>2</sup>	80*	80*
Geotextile Bitumen Retention	ASTM D6140	L / m <sup>2</sup>	0.5 - 0.7	0.5 - 0.7
Standard Roll Width**		m	3.9**	3.9**
Standard Roll Length**		m	50**	50**

MD = Machine Direction, CMD = Cross Machine Direction

\* A range of geotextile mass is available on request to suit specific projects requirements. The standard geotextile mass is 80g/m<sup>2</sup> to provide a good bond and superior ease of installation benefits.

\*\* Other roll dimensions are available to suit project requirements.





# About Us

## Leaders in Geosynthetics

Global Synthetics is a 100% Australian-owned company, proud to offer a complete range of high-quality geosynthetic products backed by over 200 years of combined staff experience in the industry.

We have supplied products to some of the largest recent infrastructure works in Australia. Global Synthetics provides major benefits to any geotechnical engineering project with the right products and our technical expertise.

Global Synthetics products are used in the following applications:

- Pavement Stabilisation
- Ground Improvement
- Soil Reinforcement and Retaining Structures
- Water Management
- Drainage Systems & Hydraulic Works
- Landfills
- Coastal Erosion Structures

## Get in Touch

### AUSTRALIA

#### Website

[globalsynthetics.com.au](http://globalsynthetics.com.au)

#### Email

[info@globalsynthetics.com.au](mailto:info@globalsynthetics.com.au)

#### New South Wales

(02) 9725 4321

#### North Qld

(04) 5921 1692

#### Victoria/Tasmania

(03) 9791 1772

#### Queensland

(07) 3865 7000

#### South Australia

(08) 8384 8894

#### Western Australia

(08) 9459 4300

### NEW ZEALAND

#### Website

[globalsynthetics.co.nz](http://globalsynthetics.co.nz)

#### Email

[info@globalsynthetics.co.nz](mailto:info@globalsynthetics.co.nz)

#### Auckland

0800 510 120

#### Christchurch

0800 510 120



All information provided in this publication is correct to the best knowledge of the company and is given out in good faith. The information presented herein is intended only as a general guide to the use of such products and no liability is accepted by Global Synthetics Pty Ltd for any loss or damage however arising, which results either directly or indirectly from the use of such information. Global Synthetics Pty Ltd have a policy of continuous development so information and product specifications may change without notice.

February 2025



**Global Synthetics**  
LEADERS IN GEOSYNTHETICS