

Terralink® Facing System

Reinforced soil walls and slope stability systems

An economical solution of retaining structures to be constructed with reinforced fill



Product Information

Shallow Slopes up to 45 Degrees

Terralink® structures with face angles up to 45 degrees from the horizontal require minimal protection to the outer facing. A permanent Turf Reinforcement Matting (TRM) is applied over the face and vegetated.

Steepened Slopes (45 to 70 Degrees)

Where an ACEGrid® reinforced soil steepened slope is to be constructed, the Terralink® facing would incorporate Terralink® corrosion protected steel mesh panels folded to the required face angle. These Terralink® steel mesh panels assist compaction and placement of a suitable TRM or biodegradable Erosion Control Blanket (ECB) inside the face. A growing medium is placed inside the TRM or ECB and seeded and maintained until vegetative cover is established.

Slopes Steeper than 70 Degrees

For steeper structures, Terralink® steel mesh panels can be incorporated in the face and backfilled with a growing medium and TRM to protect against erosion and establish vegetative cover or rock may be used inside the steel Terralink® facing panels.

Applications

Terralink® facing systems complement ACEGrid® geogrid reinforced soil slopes by providing a number of different facing options.

Terralink® Facing System

Benefits

- Fast construction
- Increases usable land
- Natural vegetated or stone facing
- Variable face angles
- Proven and reliable technology
- Design & construction support

Features

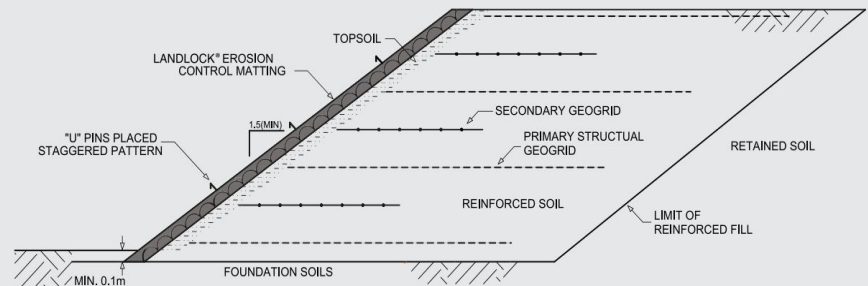
- Brace panels to fix face angle
- Corrosion protected panels
- Easy to handle
- Rapid construction of slopes
- Wide range of face angles available
- Facing system for steepened slopes
- Permanent Facing System
- Used in conjunction with ACEGrid® reinforcement



Terralink® Facing System Options

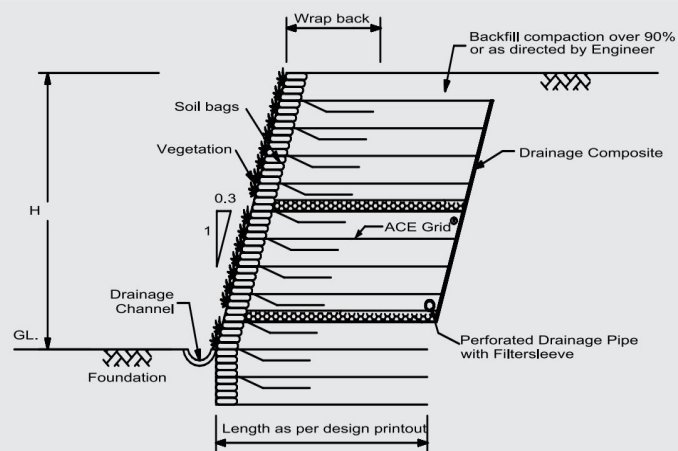
Soil System - Slopes

This Terralink® System is for slopes up to 45°, utilising primary structural geogrids for internal stability of the slope. It also incorporates a permanent Turf Reinforcement Mat (TRM) laid over the slope surface to prevent erosion and promote vegetative growth. No rigid facing or Terralink® steel facing panels are required for this option.



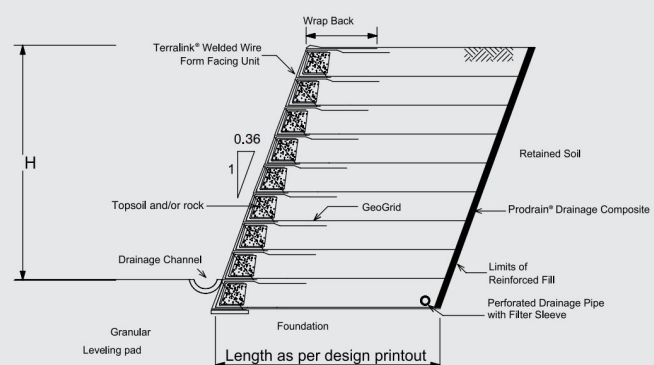
Reinforced Soil System - Steepened Slopes

The Terralink® System is a proven engineered solution for slopes up to 70° which require a vegetated facing. Consisting of an ACEGrid® geogrid wrapped face with biodegradable bags forming the face angle, Terralink® is cost effective and fast to build.



Reinforced Soil System - Walls

The Terralink® System is a proven engineered reinforced soil system with a steel mesh facing for walls up to near vertical inclination. The facing can either be vegetated or filled with stone for a gabion type appearance.



About Us

Leaders in Geosynthetics

Global Synthetics is a 100% Australian-owned company, proud to offer a complete range of high-quality geosynthetic products backed by over 200 years of combined staff experience in the industry.

We have supplied products to some of the largest recent infrastructure works in Australia. Global Synthetics provides major benefits to any geotechnical engineering project with the right products and our technical expertise.

Global Synthetics products are used in the following applications:

- Pavement Stabilisation
- Ground Improvement
- Soil Reinforcement and Retaining Structures
- Water Management
- Drainage Systems & Hydraulic Works
- Landfills
- Coastal Erosion Structures

Get in Touch

AUSTRALIA

Website

globalsynthetics.com.au

Email

info@globalsynthetics.com.au

New South Wales

(02) 9725 4321

North Qld

(04) 5921 1692

Victoria/Tasmania

(03) 9791 1772

Queensland

(07) 3865 7000

South Australia

(08) 8384 8894

Western Australia

(08) 9459 4300

NEW ZEALAND

Website

globalsynthetics.co.nz

Email

info@globalsynthetics.co.nz

Auckland

0800 510 120

Christchurch

0800 510 120



All information provided in this publication is correct to the best knowledge of the company and is given out in good faith. The information presented herein is intended only as a general guide to the use of such products and no liability is accepted by Global Synthetics Pty Ltd for any loss or damage however arising, which results either directly or indirectly from the use of such information. Global Synthetics Pty Ltd have a policy of continuous development so information and product specifications may change without notice.



Global Synthetics
LEADERS IN GEOSYNTHETICS