

**April 10, 2024 (UTC 02:00)**

Asian Microstrategy in the making?

<b>BTC</b>	<b>\$69,148.01</b>	<b>S&amp;P500</b>	<b>5,209.91</b>	<b>US 10Y</b>	<b>4.3656%</b>	<b>WTI</b>	<b>\$85.31</b>
	-3.5%		+0.1%		-0.0562PPT		-1.3%
<b>ETH</b>	<b>\$3,506.96</b>	<b>Nasdaq</b>	<b>16,306.64</b>	<b>DXY</b>	<b>104.10</b>	<b>Gold</b>	<b>\$2,373.50</b>
	-5.1%		+0.3%		-0.0%		+1.0%

- Another challenging session with \$BTC down -3.5%, now trading around \$69,148. The 4/8 ETF data indicates another net outflow, driven by a \$303M outflow from \$GBTC and small flows from \$IBIT and \$FBTC.
- Tonight, the US will release the Consumer Price Index (CPI) data, with the consensus forecasting the 3.4% headline CPI and the 3.7% core CPI year-over-year.
- In the altcoin market, \$SAGA has been listed on Binance and is now trading at \$6.5. Monad announced a \$225M raise led by Paradigm, while 0xScope reports that \$ARKM might have breached its tokenomics terms.
- With all categories showing negative performance, \$WIF, \$APT, and \$ICP were the top three losers, while \$FTM, \$TON, and \$TAO registered gains.

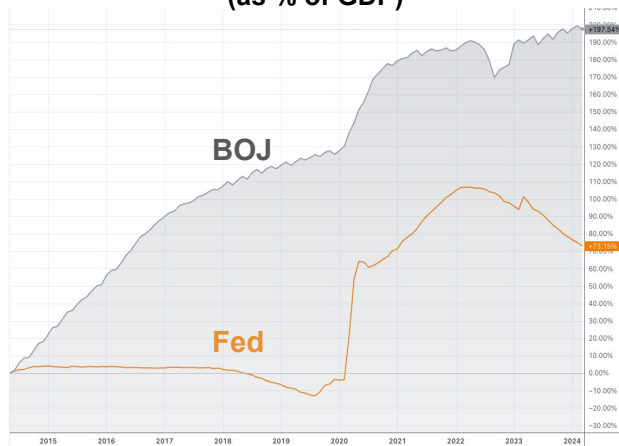
### Asian Microstrategy in the making?

Metaplanet(3350 JP), a hotel operator-turned-web3-infra-provider, saw its Tokyo-listed stock surge 90% after adding \$6.6mn in BTC to its balance sheet. In an official statement, the US\$23mn market-cap company cited inflation hedge, macroeconomic instability, and digital scarcity among others as its rationale. This is reminiscent of Microstrategy(MSTR US), a de facto pioneer of incorporating BTC into treasury assets as a public company. The Metaplanet's move is backed by crypto investors including Sora Ventures and Mark Yusko.

Two things set apart Metaplanet's thesis from MSTR's. First, the BOJ's currency debasement dwarfs the Fed's in terms of both duration and scale, which have culminated in the JPY's dramatic depreciation vs USD recently. Second, given the crypto's significantly higher capital gain

tax rate vs the stock's, Metaplanet shares can serve as a tax arbitrage vehicle for local investors. Under the current Japanese tax regime, crypto earnings can be taxed at rates up to 55%, while the gains from stock is taxed at a flat 20%.

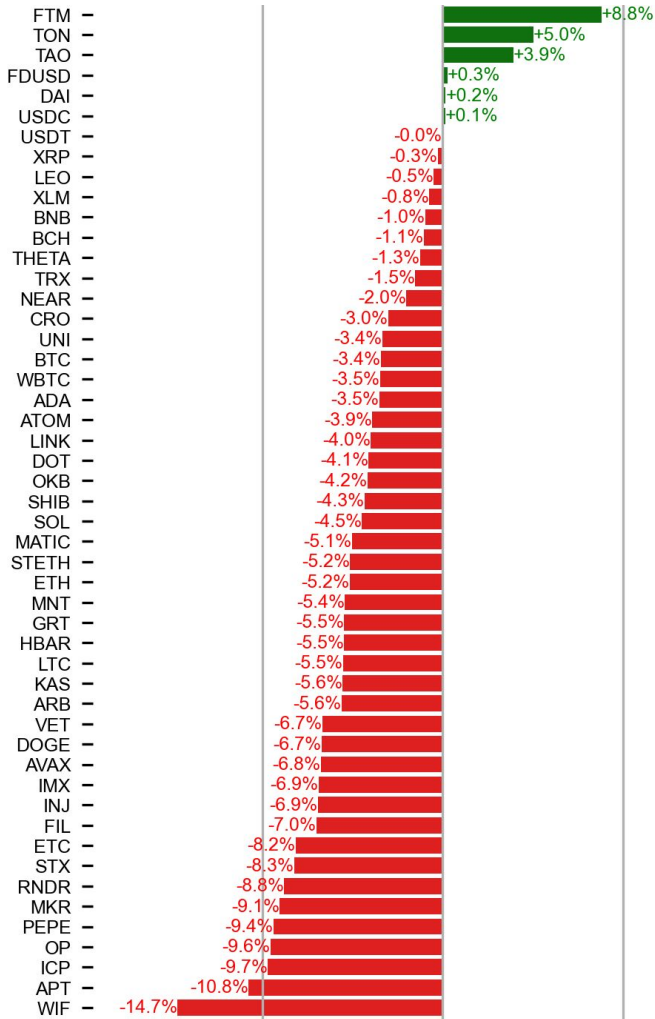
**Balance sheet expansion: BOJ vs Fed (as % of GDP)**



Source: TradingView

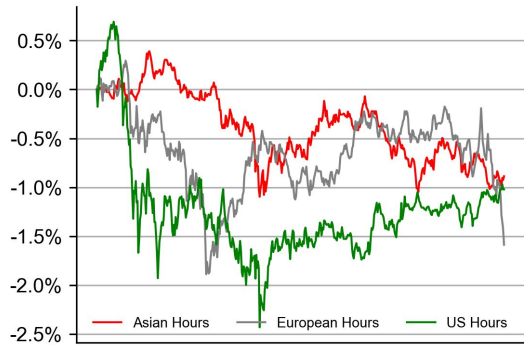
# PRICE ACTIONS

## 24H Price Change (top 50)

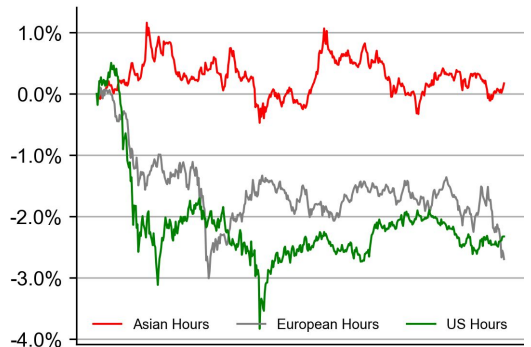


## Time Zone Analysis

### BTC



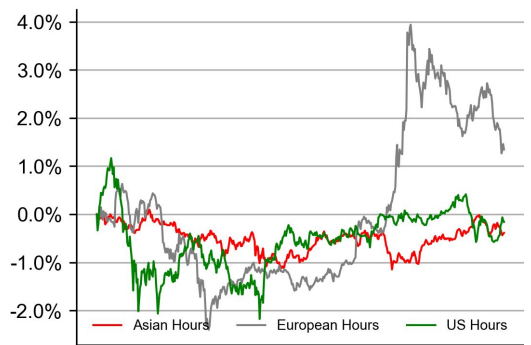
### ETH



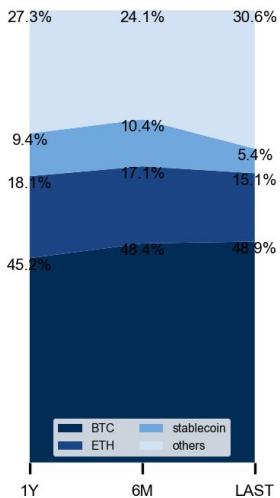
### SOL



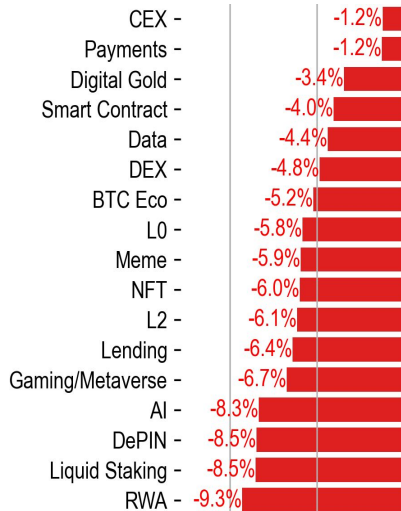
### XRP



## Dominance Ratio



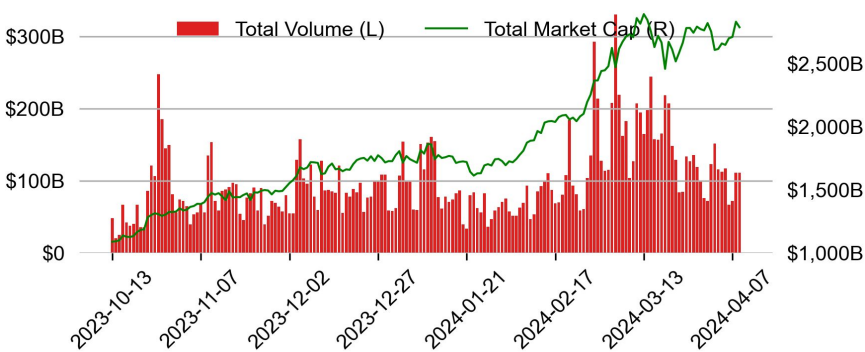
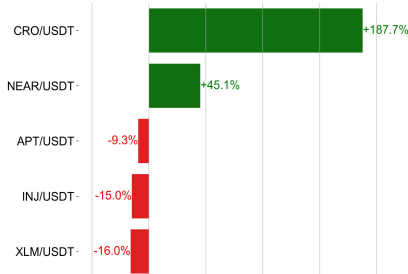
## Sector Performance



# TRADING VOLUME

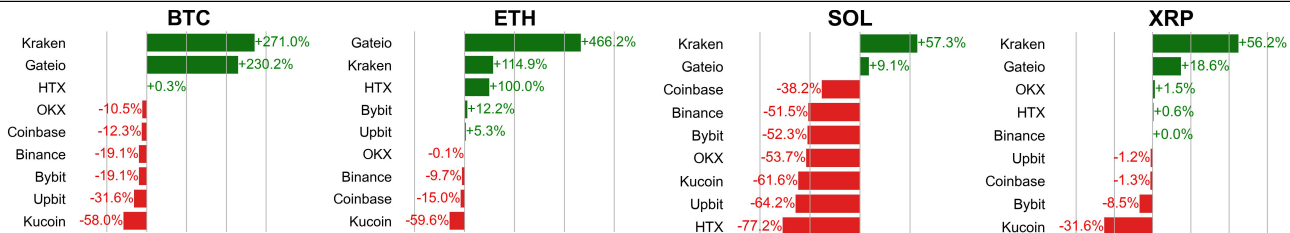
## 24H Vol % Chg\*

## Spot Volume



\* 5 largest 24H vol. change from the universe of top 50 assets by market cap

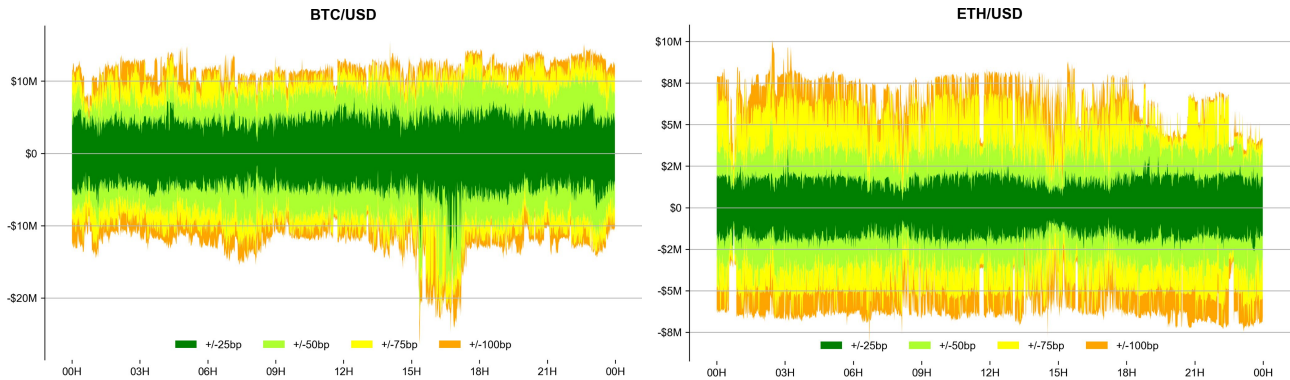
## Spot Volume Leaders (% chg vs ave)\*



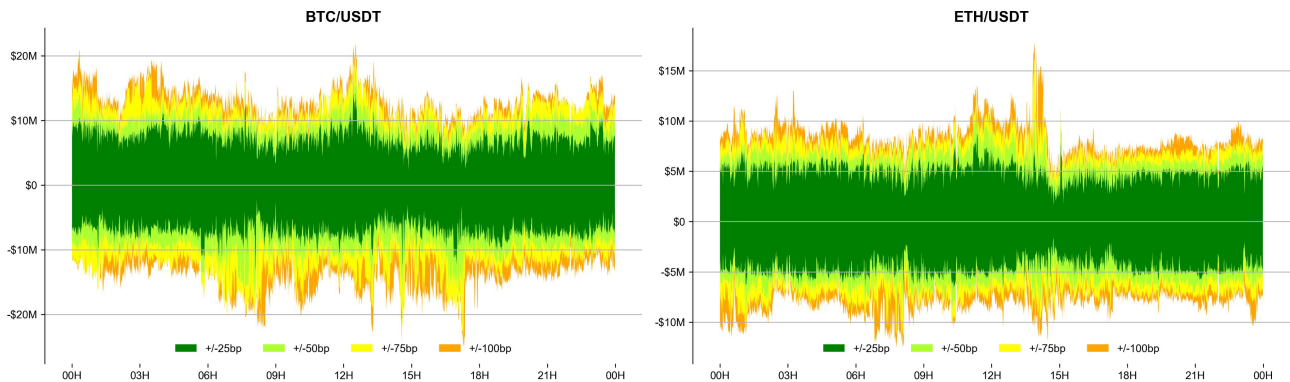
\* Ranked by the % difference between the 24H volume vs. the 30-day average

## ORDER BOOK DEPTH (within 1% best bid/ask)

### Coinbase

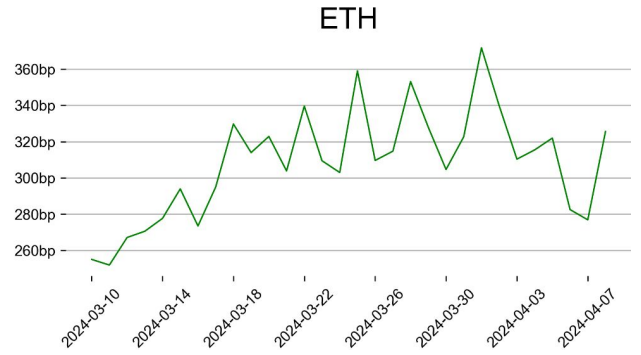
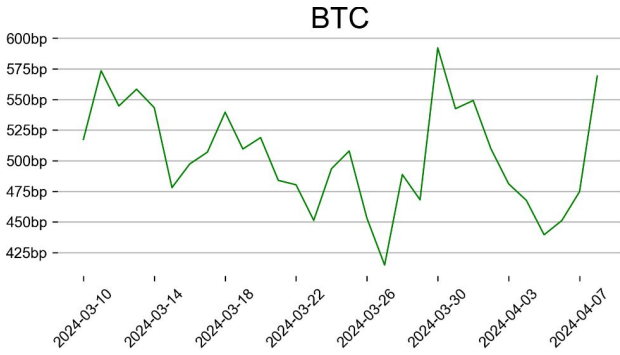


### Binance

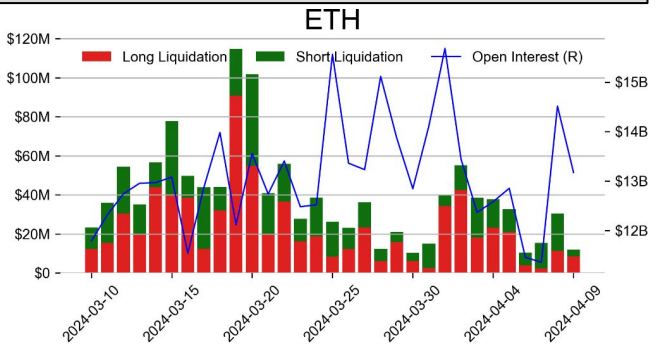
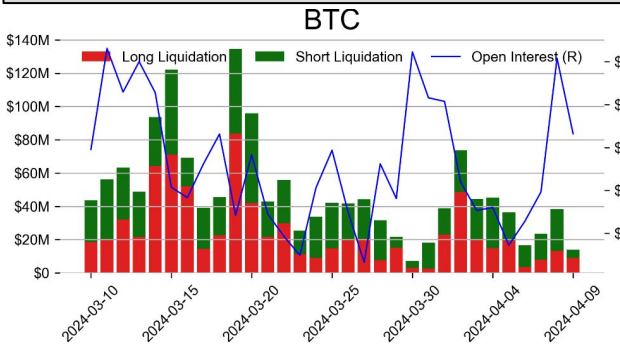


# DERIVATIVES

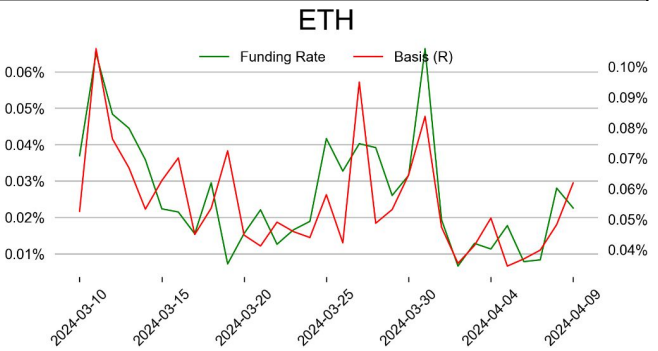
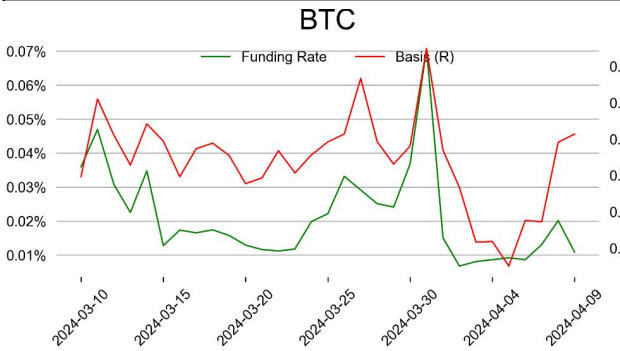
## OI/ MC & Leverage Ratios



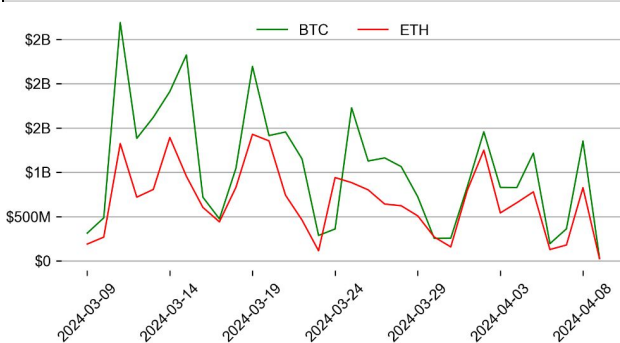
## Futures O.I. & Liquidations



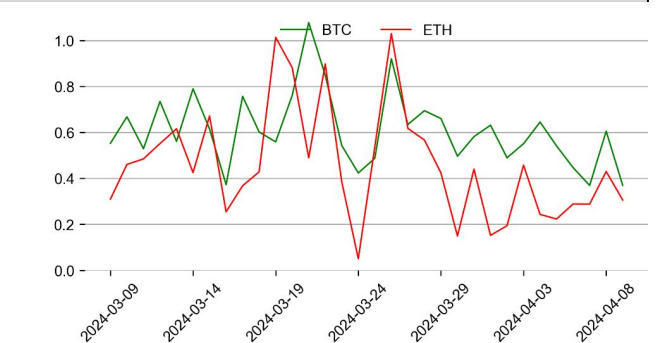
## Perps Funding Rate & Rolling Basis



## Option Volume



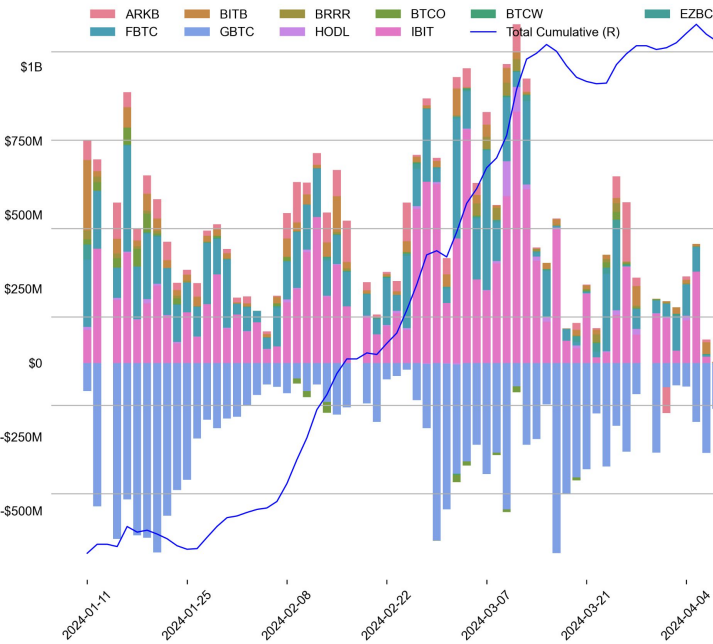
## Put Call Ratio



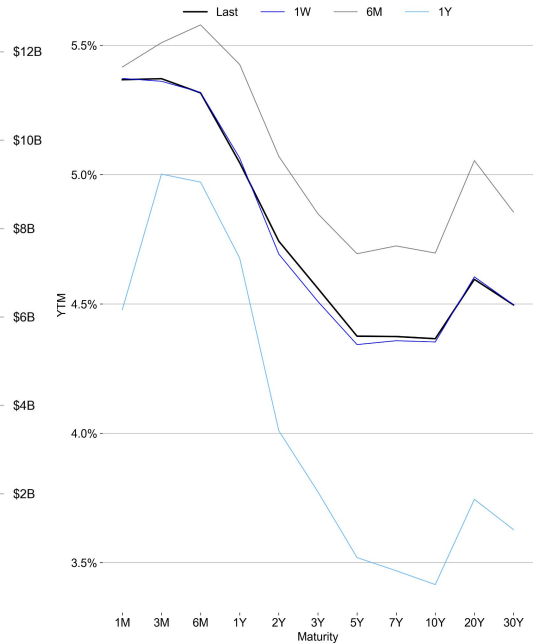
# TRADFI

	Stocks					FX				Commodity		Crypto Equity			
	S&P500	Nasdaq	EuroStoxx50	HSI	CSI300	USD/EUR	USD/JPY	USD/CNY	DXY	WTI	Gold	COIN	MSTR	MARA	RIOT
Last	5209.91	16306.64	4989.25	16828.07	3533.49	0.9209	151.78	7.2323	104.10	85.31	2373.50	242.96	1441.02	17.95	10.00
1D	0.1%	0.3%	-1.1%	0.6%	-0.1%	0.0%	-0.0%	0.0%	-0.0%	-1.3%	1.0%	-5.5%	-4.8%	0.0%	-0.5%
1M	1.7%	1.4%	0.6%	2.9%	-0.3%	0.8%	3.2%	0.7%	1.4%	9.4%	8.6%	-5.3%	1.1%	-23.6%	-19.0%
1Y	26.8%	34.9%	15.8%	-17.2%	-13.9%	0.0%	13.6%	5.1%	1.5%	7.0%	19.3%	267.4%	360.7%	97.3%	-5.5%

## BTC Spot ETF Flow

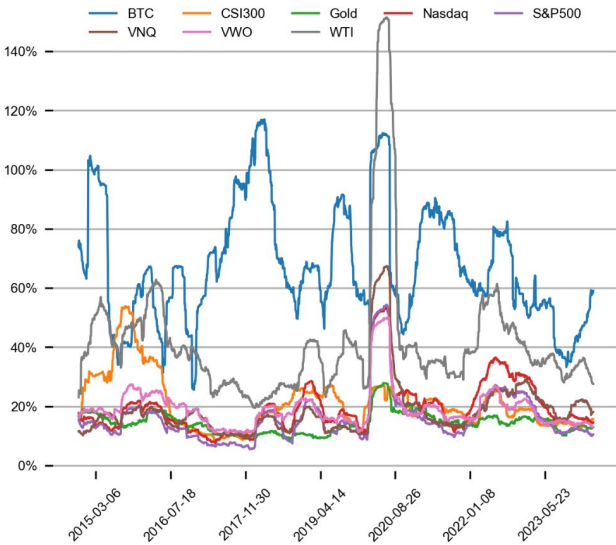


## US Treasury Yield Curve

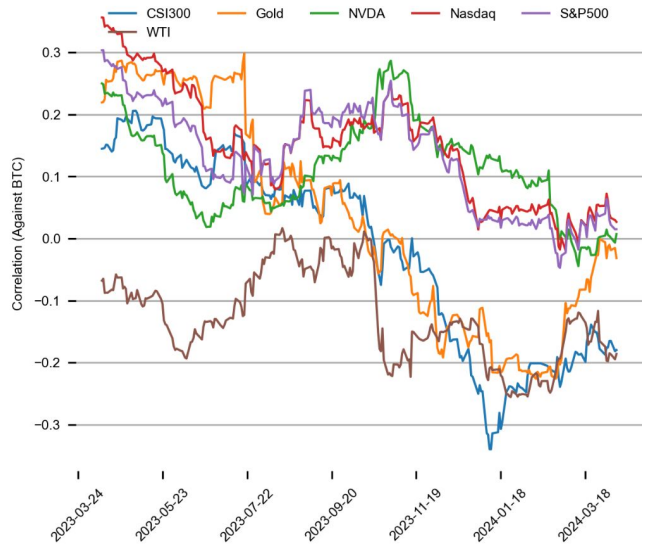


## CROSS ASSET METRICS

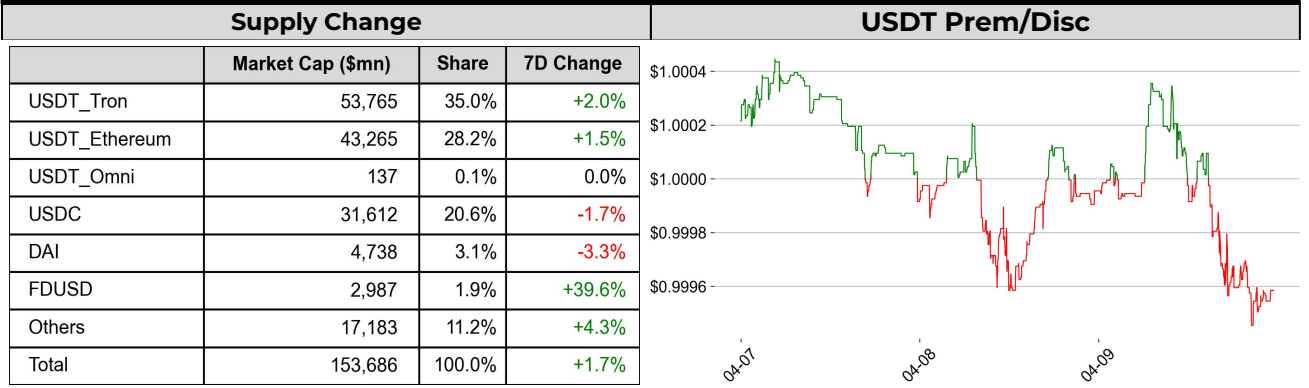
### Volatility



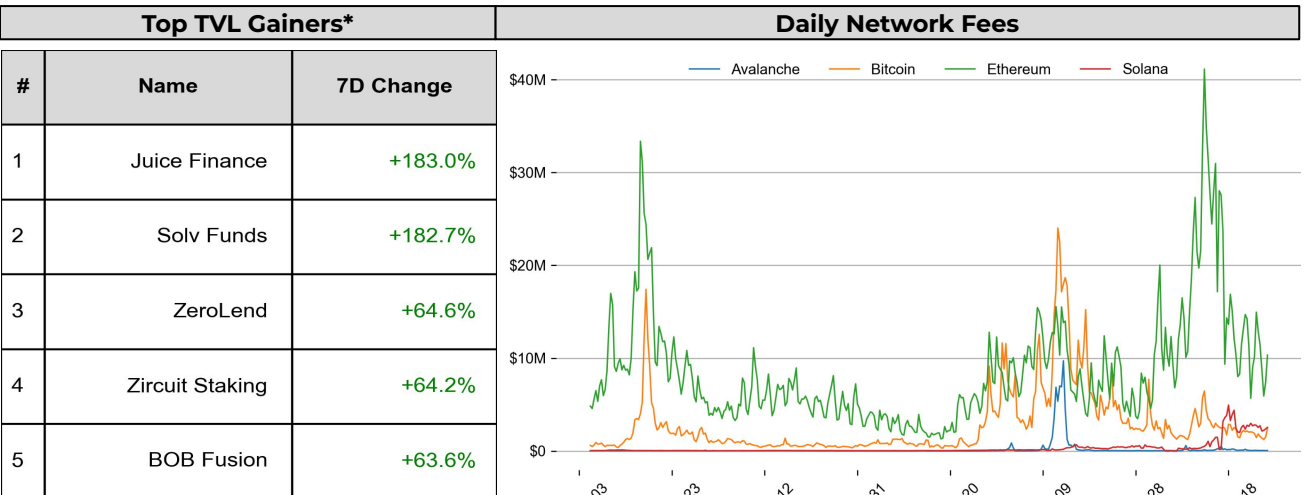
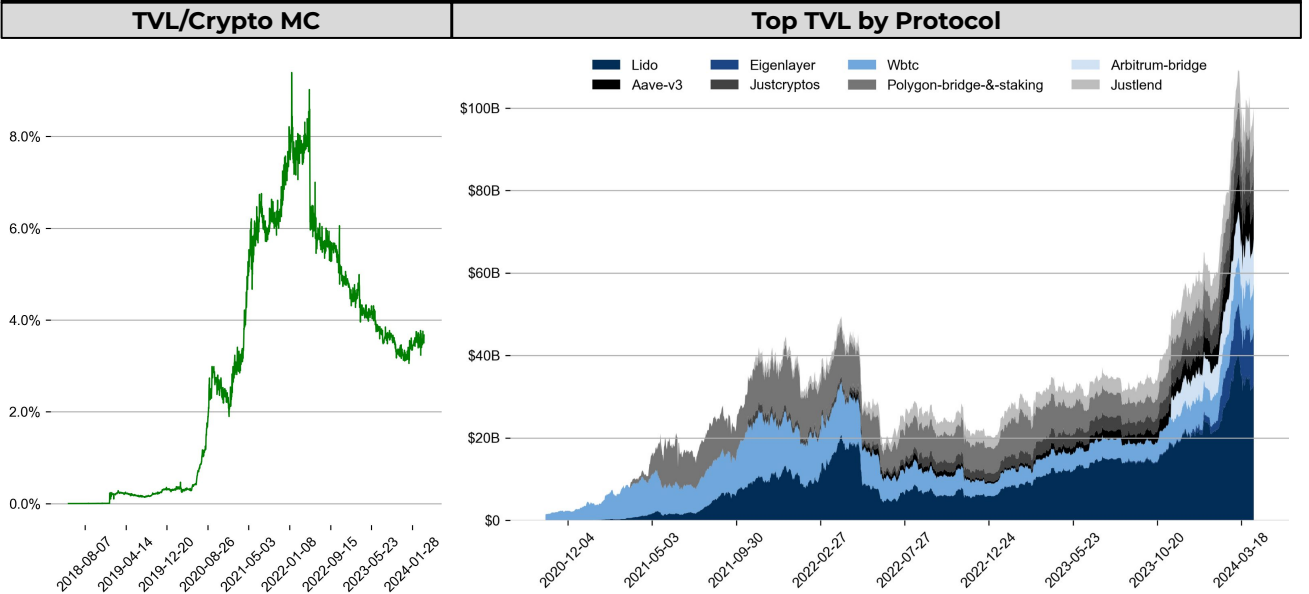
### Correlation



## STABLECOIN



## ONCHAIN MOVES



\* 5 largest 7 day TVL change in % terms from the universe of minimum \$100m TVL protocols, according to DefiLlama.

## EVENTS CALENDAR

### Upcoming Token Unlocks (next 7 days)

Asset	Type	Entity	Unlock Date (UTC)	Unlock Units	Unlock Value	% of Avg Trading Vol	Supply Locked
CFX	Allocation	Ecosystem Fund	4/11/24	40.8M	\$14.8M	9.4%	22.8%
CFX	Allocation	Team	4/11/24	36.7M	\$13.3M	8.4%	22.8%
RPL	Emissions	Node Operators	4/12/24	60K	\$1.7M	19.2%	0.0%
ATP	Allocation	Community	4/12/24	3.2M	\$45.4M	10.1%	63.5%
ATP	Allocation	Core Contributors	4/12/24	11.9M	\$168.1M	37.2%	63.5%
ATP	Investment	Investors	4/12/24	8.4M	\$119.2M	26.4%	63.5%
SEI	Allocation	Foundation	4/15/24	29M	\$21.0M	6.5%	73.3%
SEI	Allocation	Ecosystem Reserve	4/15/24	93M	\$68.0M	20.8%	73.3%
APE	Allocation	Treasury	4/17/24	7.3M	\$12.4M	14.5%	39.5%
APE	Allocation	Team Members	4/17/24	5.7M	\$56.8M	64.8%	47.0%
APE	Emissions	Staking Reward	4/17/24	3.4M	\$33.9M	38.7%	47.0%
APE	Allocation	Play & Earn	4/17/24	3.4M	\$33.4M	38.2%	47.0%
APE	Allocation	Advisors	4/17/24	900K	\$8.9M	10.2%	47.0%
APE	Allocation	Ecosystem Fund	4/17/24	1.7M	\$16.7M	19.1%	47.0%
PRME	Investment	Investors	4/17/24	752K	\$17.4M	141.4%	67.8%

### Other Events (next 7 days)

Date	Title	Coins
Apr 10, 2024	US CPI	
Apr 10, 2024	"Sui basecamp" Conference	\$SUI
Apr 10, 2024	Token Swap	\$ZBC
Apr 10, 2024	Pawnee Hard Fork	\$BNB
Apr 10, 2024	"Influence Game Pre-Release	\$STRK
Apr 11, 2024	Block Reward Halving	\$XEC
Apr 11, 2024	Bybit Launchpool End	\$ARPS
Apr 11, 2024	Mainnet (Avalanche Subnet)	\$PDA
Apr 12, 2024	Brand Refresh Reveal	\$ROSE
Apr 12, 2024	QuickNode Testnet	\$CYBER
Apr 12, 2024	\$400M Unlock	\$APT
Apr 15, 2024	Nakamoto Upgrade	\$STX
Apr 15, 2024	\$64M \$STRK Unlock	\$STRK
Apr 15, 2024	Pre-register (Private Beta 4)	\$ILV

## DATA EXPLAINER

Headers	Source	Note
<b>PRICE ACTIONS TRADING VOLUME ORDER BOOK DEPTH DERIVATIVES</b>	Presto Labs	<p><b>Time Zone Analysis</b> separates out the asset's price action according to the business hours in Asia, Europe and US region. This is to identify which geography is responsible for price actions of the last 24hrs. The cut-offs are,</p> <ul style="list-style-type: none"> <li>- Asia: UTC 22:00 -1 to UTC 6:00</li> <li>- Europe: UTC 6:00 to 14:00</li> <li>- US: UTC 14:00 to 22:00</li> </ul> <p><b>Sector</b> constituents are, AI(FET, AGIX, OCEAN), BTC Eco(BCH, BSV, ICP, STX, ORDI), CEX(BNB, CRO, OKB, KCS, BGB), Data(LINK, GRT), DePIN(ICP, FIL, AR, HNT, SIA), DEX(UNI, INJ, RUNE, SNX, DYDX, OSMO, CRV, CAKE, GMX), Digital Gold(BTC), Gaming/Metaverse(IMX, BEAM, SAND, GALA, AXS, WEMIX, RON), L0(AVAX, DOT, TIA), L2(MATIC, OP, MNT, ARB, STRK), Lending(MKR, AAVE, COMP), Liquid Staking(LDO, RPL, JTO), Meme(DOGE, SHIB, FLOKI), NFT(APE, BLUR), Payments(XRP, LTC, XLM, XMR, ZEC), RWA(ONDO, CFG), Smart Contract(ETH, BNB, SOL, ADA, TRX, TON, APT, NEAR, HBAR, VET, ALGO, FTM, SUI, FLOW, MINA). The sector return is market-cap weighted average of the constituents' returns.</p> <p><b>Exchanges:</b> 24H spot price &amp; volume % changes and dominance ratios are from CoinGecko. Time Zone Analysis is based on data from Binance. Spot volume leaders are based on data from Binance Bybit, Coinbase, Kraken, OKX, KuCoin, HTX, Upbit, Gate.io. Futures data are from Binance OKX, Bybit, KuCoin. Options data are from Deribit.</p>
<b>TRADFI</b>	Investing.com Farside Investors	<p><b>BTC Spot ETF Flows</b> are based on data shown on farside.co.uk at UTC 03:00. Due to varying data reporting schedules among ETF sponsors, the figures may not encompass data from all 10 ETFs.</p>
<b>STABLECOIN ONCHAIN MOVES</b>	DefiLlama	<p><b>Stablecoin Supply</b> is a proxy for fiat on/off ramp from TradFi into crypto. <b>USDT Prem/Disc</b> reflects the USDT supply/demand imbalance, approximating the market's risk aversion towards USDT specifically, and/or the crypto market more broadly. The data is from Coinbase.</p> <p><b>TVL/ Crypto MC Ratio</b> = Total Value Locked / Crypto Market Cap. The ratio neutralizes the TVL changes caused by asset price fluctuations.</p>
<b>EVENTS CALENDAR</b>	The Tie LayerGG	<p><b>Token Unlocks</b> shows those whose unlock amount is greater than 6% of the average trading volume from the universe of top 200 crypto assets by market cap.</p> <p><b>Other Events</b> show summary of other major events over the next 30 days.</p>



## About Presto

Presto is a Singapore-based algorithmic trading and financial services firm founded in 2014. Presto focuses on delivering exceptional value for clients through rigorous research-driven approach to investment and trade execution. With more than a 100 million trade executions in a day, Presto is a leading financial services firm in both digital assets and traditional finance markets.

Find out more at <https://www.prestolabs.io>.  
Follow Presto for more content: [X](#), [LinkedIn](#)

## Authors

Peter Chung, Head of Research : [Twitter](#), [Telegram](#), [LinkedIn](#)  
Min Jung, Research Analyst : [Twitter](#), [Telegram](#), [LinkedIn](#)

## Required Disclosures

*Any expression of opinion (which may be subject to change without notice) is personal to the author and the author makes no guarantee of any sort regarding accuracy or completeness of any information or analysis supplied. The views and opinions expressed herein are those of the author(s) and do not necessarily reflect the views of Presto Labs or its affiliates. This material by itself, is not and should not be construed as an offer or a solicitation to deal in any investment product or to enter into any legal relations. This material is for informational purposes only and is only intended for sophisticated investors, and is not intended to provide accounting, legal, or tax advice, or investment recommendations, or an official statement of Presto Labs or its affiliates. Presto Labs, its affiliates and its employees make no representation and assume no liability to the accuracy or completeness of the information provided. Presto Labs, its affiliates and its employees also do not warrant that such information and publications are accurate, up to date or applicable to the circumstances of any particular case. Certain statements in this document provide predictions and there is no guarantee that such predictions are currently accurate or will ultimately be realized. Prior results that are presented here are not guaranteed and prior results do not guarantee future performance. Recipients should consult their advisors before making any investment decision. Presto Labs or its affiliates may have financial interests in, or relationships with, some of the assets, entities and/or publications discussed or otherwise referenced in the materials. Certain links that may be provided in the materials are provided for convenience and do not imply Presto Labs' endorsement, or approval of any third-party websites or their content. Any use, review, retransmission, distribution, or reproduction of these materials, in whole or in part, is strictly prohibited in any form without the express written approval of Presto Labs. Presto Research and related logos are trademarks of Presto Labs, or its affiliates.*