



# Daily Market Brief

## Jun 5, 2026 (UTC -02:00)

Min Jung | Research Associate

BTC	\$63,861.82 -2.0%	S&P500	7,584.41 +0.4%	US 10Y	4.4740% -0.0170PPT	WTI	\$92.98 -3.2%
ETH	\$1,770.40 -3.1%	Nasdaq	26,830.96 -0.1%	DXY	99.43 -0.1%	Gold	\$4,488.76 +0.5%

- \$BTC once traded near \$61k during Asia hours. As of now, \$BTC is trading at \$63,861 and \$ETH is trading at \$1,770. Bitcoin dominance stands at 59.49%.
- Professional investors reduced their U.S. spot Bitcoin ETF holdings by 17% in Q1, with hedge funds and brokerages accounting for the vast majority of the selling as Bitcoin fell 22% during the quarter. Meanwhile, investment advisors remained relatively steady and banks increased their exposure, suggesting the pullback was driven primarily by tactical and trading-oriented investors.
- A few other headlines include: JPMorgan and Citi planning a new tokenized deposit system, Plume and EtherFi launching a \$100 million RWA vault for institutional yield, and Coinbase announcing the successful origination of the first mortgage backed by Fannie Mae and collateralized by Bitcoin.
- During the last 24 hours, the top three gainers were \$HOME, \$TEL, and \$SIREN, while the top three losers were \$ZEC, \$LAB, and \$GRASS.

### The Bug Is Fixed. The Doubt Isn't.

Last night Zcash disclosed a critical flaw in its Orchard circuit. The bug let an attacker mint unlimited, undetectable counterfeit ZEC, and it had been live from Orchard's launch in May 2022 until an emergency patch on June 1. It was found by Taylor Hornby, a white-hat researcher Shielded Labs hired in April, who used Anthropic's newly released Opus 4.8 model. ZEC is down about 25% in the last 24H. But the patch is the easy part. The same shielded cryptography that gives Zcash its entire value proposition also means there is no way to prove the bug was never exploited. The supply is effectively un-auditable, and the strongest assurance on offer is the team's own view that prior exploitation is unlikely. That is what the market is repricing: not a fixed bug, but a supply-integrity question that privacy makes impossible to disprove. The proposed remedy is a new shielded pool with turnstile accounting, which would verify the old pool holds no phantom ZEC. That migration is the real catalyst to watch. Until it ships and clears governance, the discount reflects counterfeiting risk that can only be migrated away from, never ruled out.

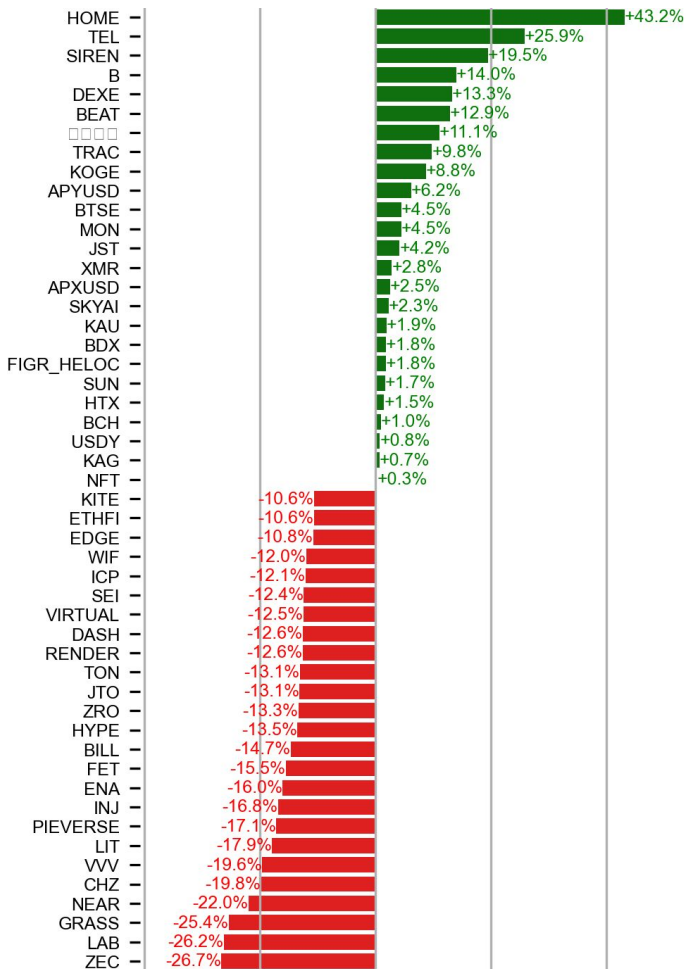
Date / Time	Event
Tue 2022-05-31, 11:50 am	Vulnerable NU5 network upgrade activates
Thu 2026-05-28, ~12:00 pm	Opus 4.8 released
Fri 2026-05-29, ~6:00 pm	Issue discovered (noticed later that evening)
Fri 2026-05-29, 11:53 pm	Issue reported
Sat 2026-05-30, 6:30 am	Issue acknowledged received by ZODL
Mon 2026-06-01, ~9:30 pm	Soft fork mitigation activated
Tue 2026-06-02, ~10:00pm	Orchard re-enabled at block 3,364,600

**Total window of exposure:** 4 years, 1 day, 10 hours  
**Opus 4.8 window of exposure:** 4 days, ~10 hours  
**Response time** (acknowledged → soft fork): 2 days, 15 hours

Source: Taylor's Work Log PDF

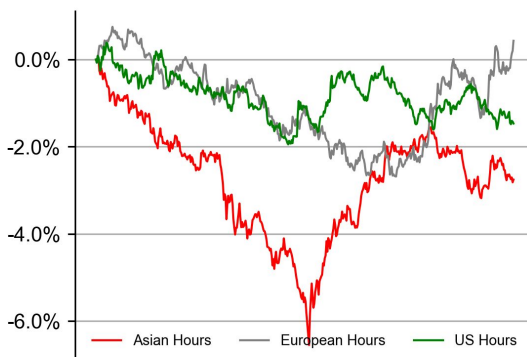
# PRICE ACTIONS

## 24H Price Change (Top/Bottom 25 from Top 200)

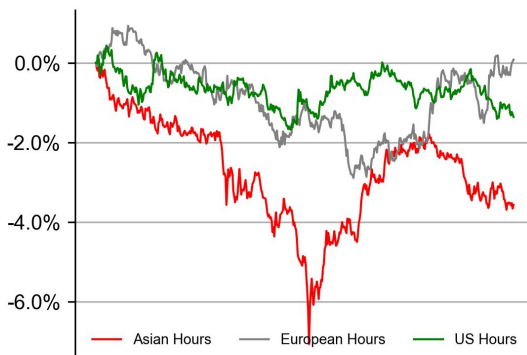


## Time Zone Analysis

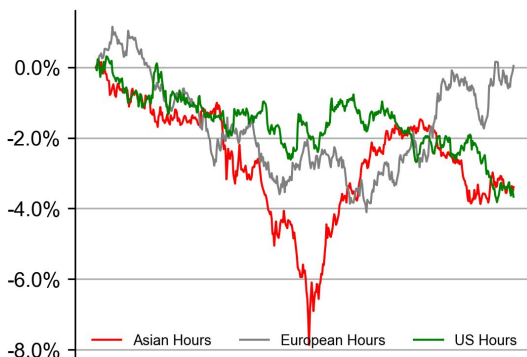
### BTC



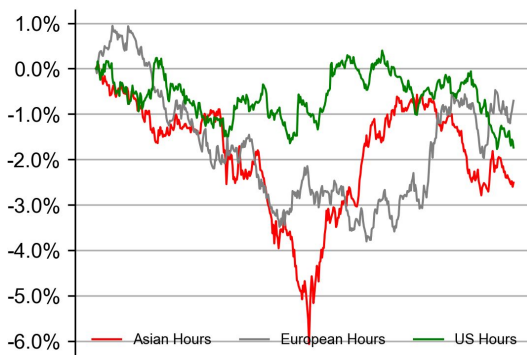
### ETH



### SOL

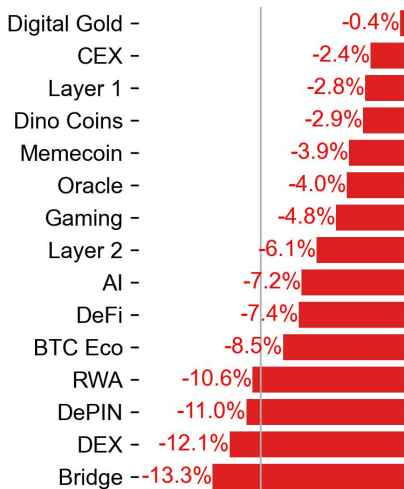
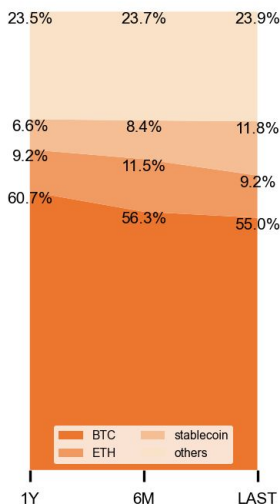


### XRP



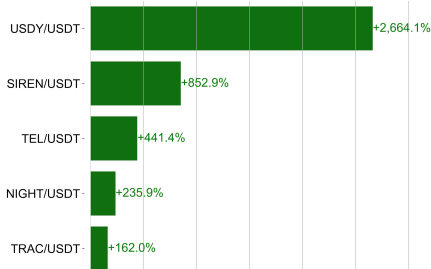
## Dominance Ratio

## Sector Performance



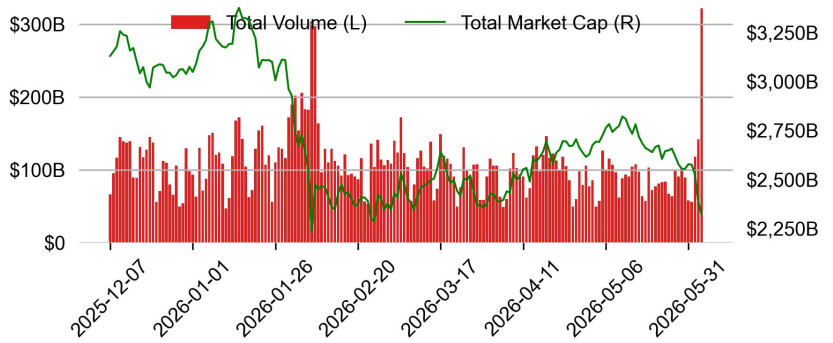
# TRADING VOLUME

## 24H Vol % Chg\*

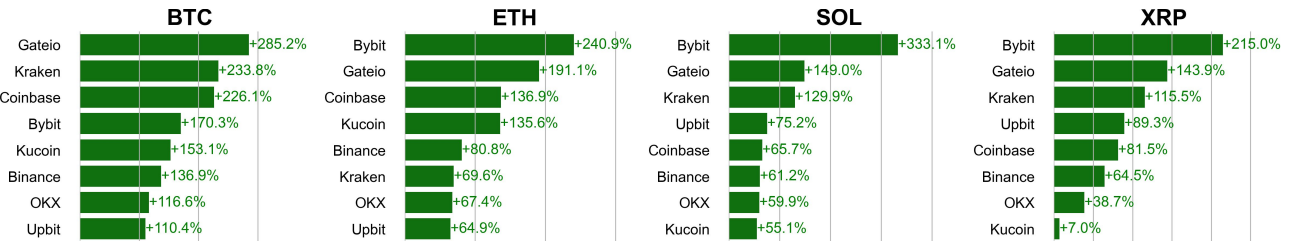


\* 5 largest 24H vol. change from the universe of top 50 assets by market cap

## Spot Volume



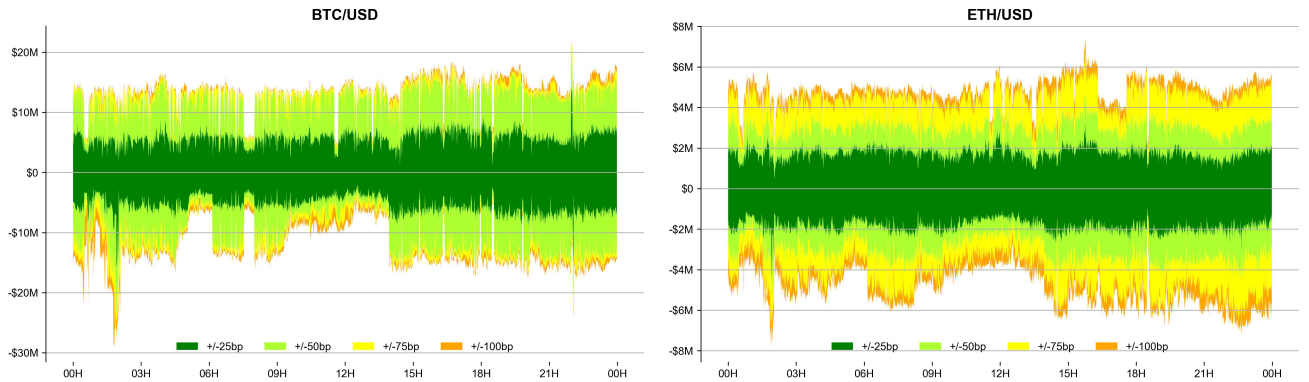
## Spot Volume Leaders (% chg vs ave)\*



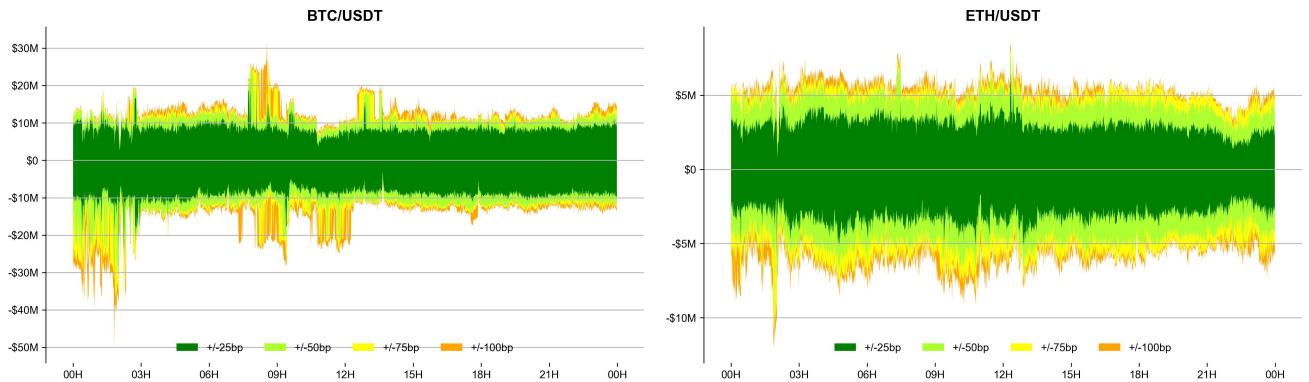
\* ranked by the % difference between the 24H volume vs. the 30-day average

## ORDER BOOK DEPTH (within 1% best bid/ask)

### Coinbase



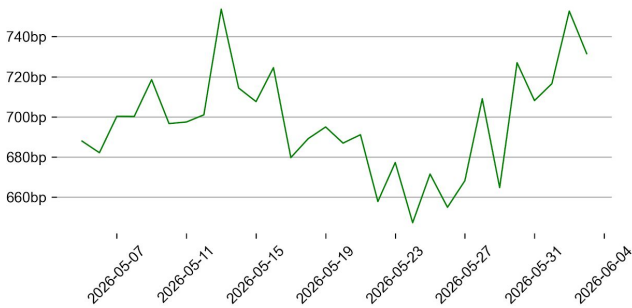
### Binance



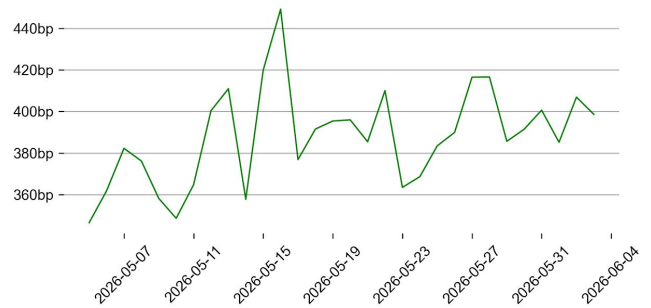
## DERIVATIVES

### Open Interest / Market Cap

#### BTC

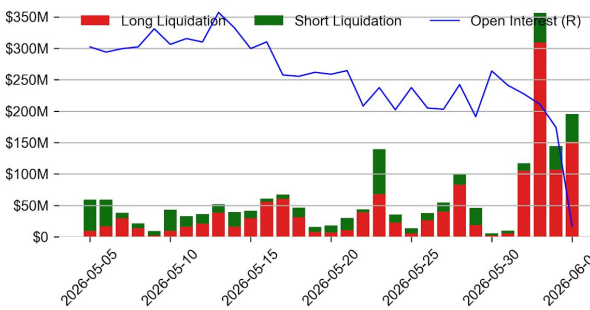


#### ETH

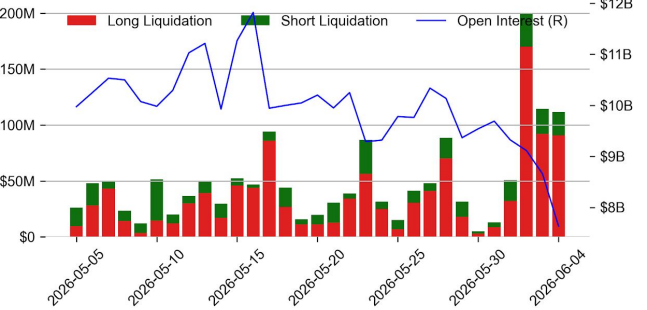


### Futures O.I. & Liquidations

#### BTC

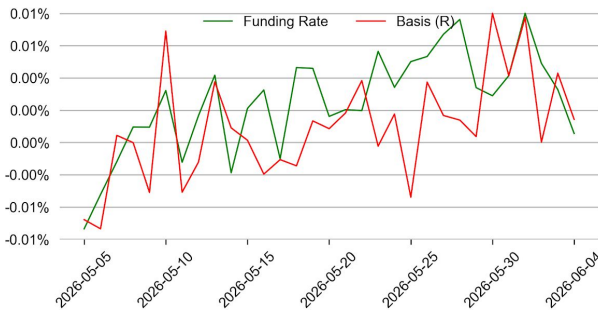


#### ETH

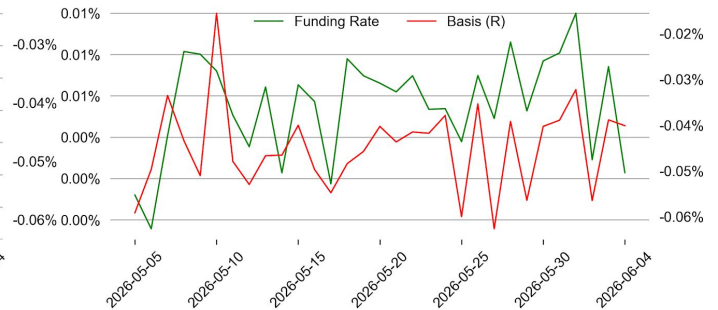


### Perps Funding Rate & Rolling Basis

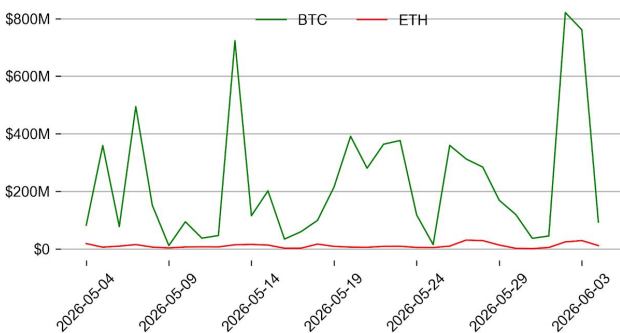
#### BTC



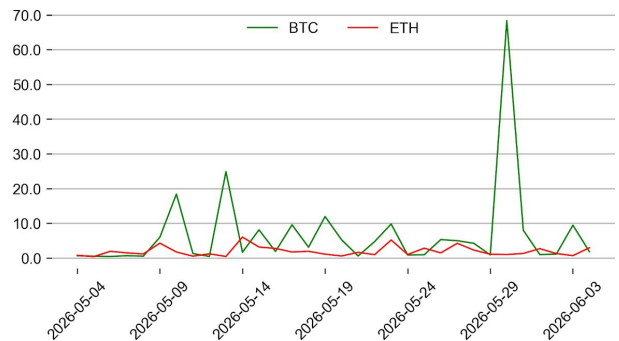
#### ETH



### Option Volume



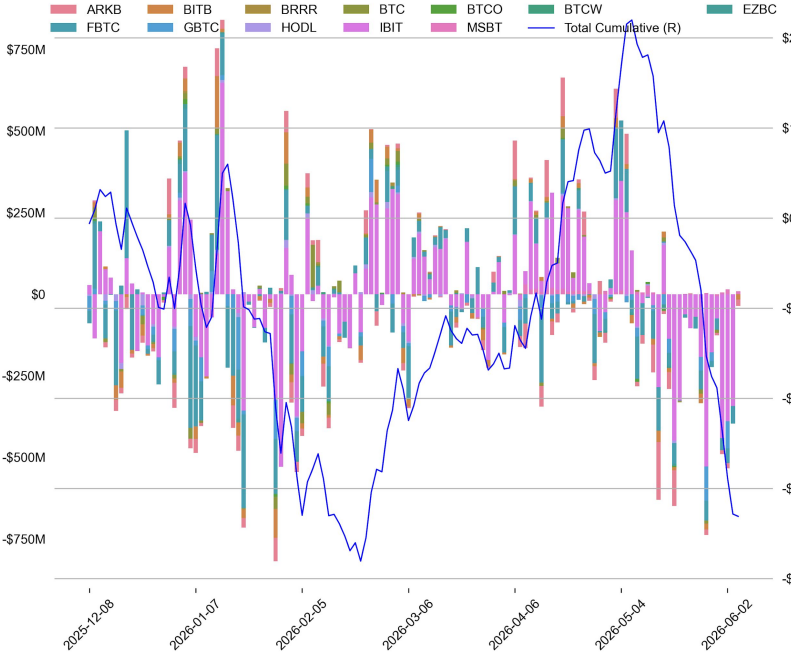
### Put Call Ratio



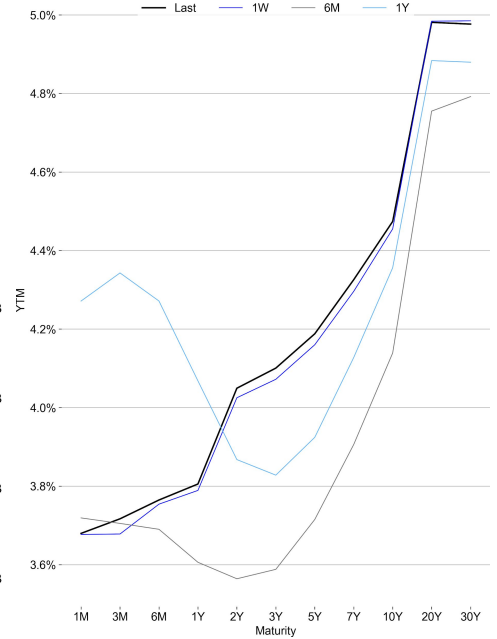
# TRADFI

	Stocks					FX				Commodity		Crypto Equity			
	S&P500	Nasdaq	EuroStoxx50	HSI	CSI300	USD/EUR	USD/JPY	USD/CNY	DXY	WTI	Gold	COIN	MSTR	MARA	RIOT
Last	7584.41	26830.96	6102.85	25253.40	4904.75	0.8612	160.00	6.7739	99.43	92.98	4488.76	164.17	129.33	13.88	27.48
1D	0.4%	-0.1%	0.8%	-1.5%	-0.7%	-0.1%	-0.0%	0.1%	-0.1%	-3.2%	0.5%	0.6%	2.2%	-0.6%	-0.6%
1M	4.5%	5.9%	4.0%	-2.5%	2.0%	0.7%	1.3%	-0.8%	1.0%	-9.1%	-1.7%	-17.0%	-30.8%	14.1%	35.0%
1Y	27.0%	37.9%	12.9%	6.8%	26.8%	-1.7%	12.1%	-5.7%	0.7%	47.9%	32.1%	-35.9%	-65.8%	-11.4%	189.3%

## BTC Spot ETF Flow

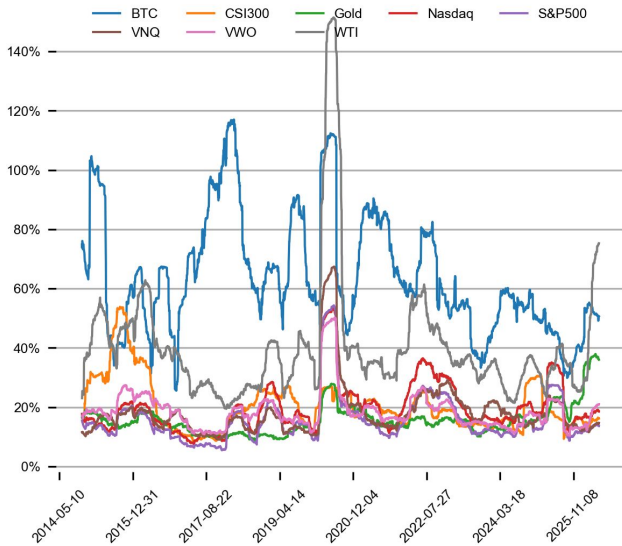


## US Treasury Yield Curve

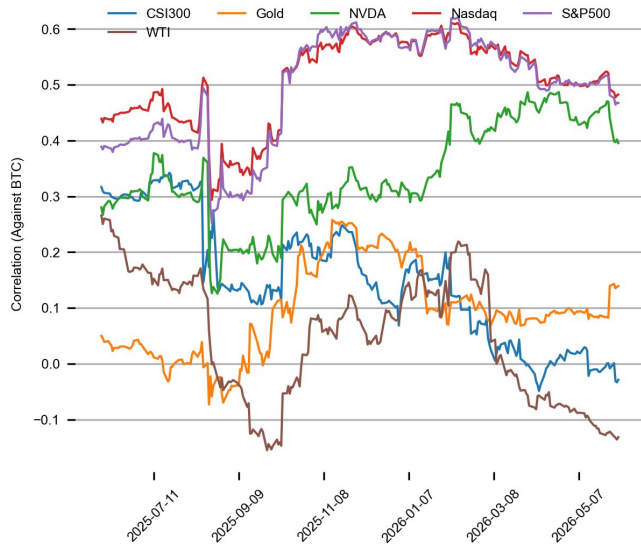


## CROSS ASSET METRICS

### Volatility



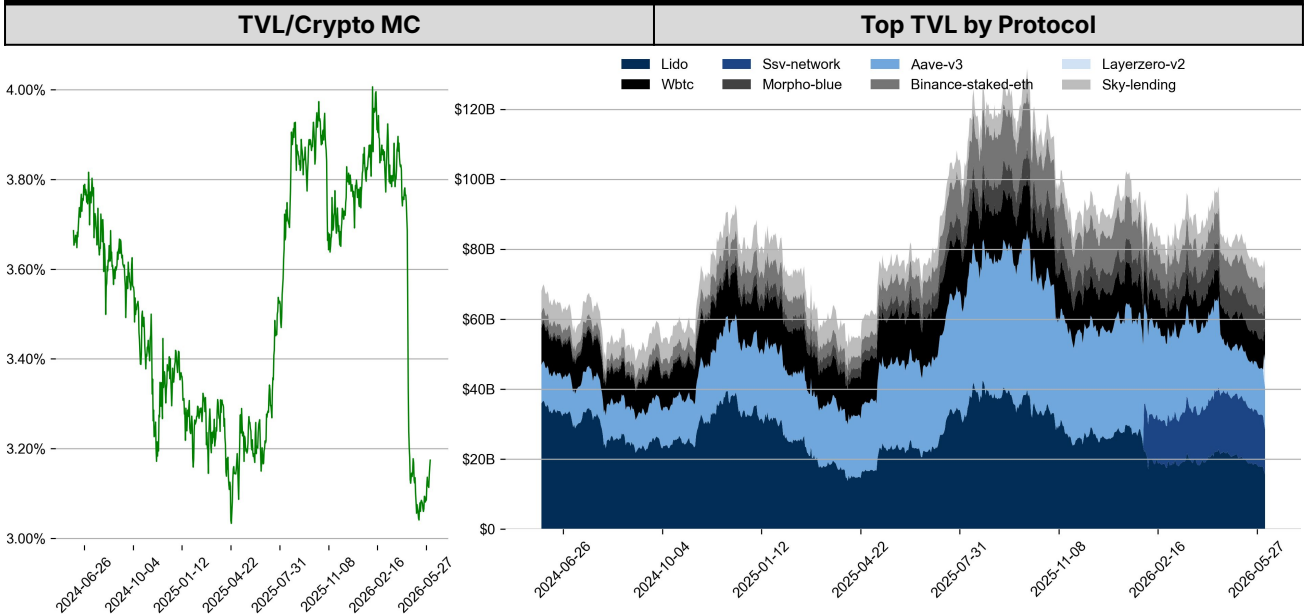
### Correlation



## STABLECOIN

Supply Change				USDT Prem/Disc
	Market Cap (\$mn)	Share	7D Change	
USDT_Trone	88,464	28.0%	-0.2%	
USDT_Ethereum	80,043	25.4%	-2.5%	
USDT_Omni	80	0.0%	0.0%	
USDC	75,718	24.0%	-1.0%	
DAI	4,545	1.4%	-1.4%	
FDUSD	338	0.1%	-9.2%	
Others	66,461	21.1%	-1.9%	
Total	315,648	100.0%	-1.4%	

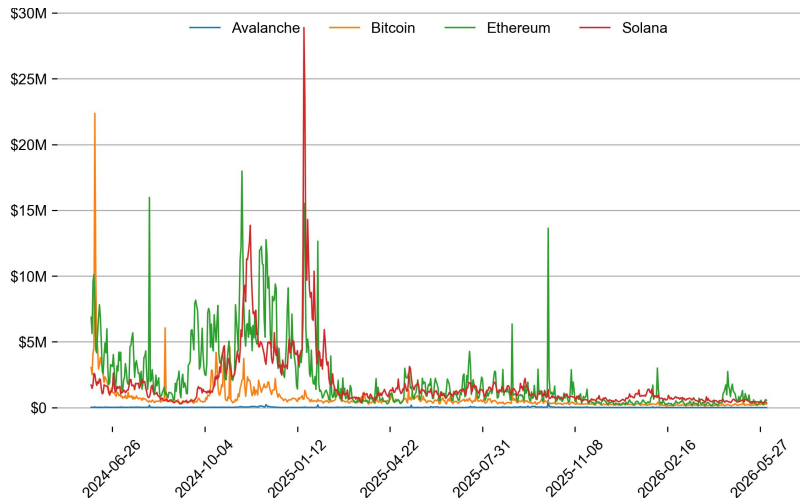
## ONCHAIN MOVES



### Top TVL Gainers\*

#	Name	7D Change
1	Lorenzo sUSD1+	+122.2%
2	OSL	+116.0%
3	World Chain	+87.6%
4	Figure Markets Democratized Prime	+30.1%
5	Optimism Bridge	+18.1%

### Daily Network Fees



\* 5 largest 7 day TVL change in % terms from the universe of minimum \$100m TVL protocols, according to DefiLlama.

## DATA EXPLAINER

Headers	Source	Note
<b>PRICE ACTIONS TRADING VOLUME ORDER BOOK DEPTH DERIVATIVES</b>	Presto Labs	<p><b>Time Zone Analysis</b> separates out the asset's price action according to the business hours in Asia, Europe and US region. This is to identify which geography is responsible for price actions of the last 24hrs. The cut-offs are,</p> <ul style="list-style-type: none"> <li>- Asia: UTC 22:00 -1 to UTC 6:00</li> <li>- Europe: UTC 6:00 to 14:00</li> <li>- US: UTC 14:00 to 22:00</li> </ul> <p><b>Sector</b> constituents are, AI(FET, AGIX, OCEAN), BTC Eco(BCH, BSV, ICP, STX, ORDI), CEX(BNB, CRO, OKB, KCS, BGB), Data(LINK, GRT), DePIN(ICP, FIL, AR, HNT, SIA), DEX(UNI, INJ, RUNE, SNX, DYDX, OSMO, CRV, CAKE, GMX), Digital Gold(BTC), Gaming/Metaverse(IMX, BEAM, SAND, GALA, AXS, WEMIX, RON), LO(AVAX, DOT, TIA), L2(MATIC, OP, MNT, ARB, STRK), Lending(MKR, AAVE, COMP), Liquid Staking(LDO, RPL, JTO), Meme(DOGE, SHIB, FLOKI), NFT(APE, BLUR), Payments(XRP, LTC, XLM, XMR, ZEC), RWA(ONDO, CFG), Smart Contract(ETH, BNB, SOL, ADA, TRX, TON, APT, NEAR, HBAR, VET, ALGO, FTM, SUI, FLOW, MINA). The sector return is market-cap weighted average of the constituents' returns.</p> <p><b>Exchanges:</b> 24H spot price &amp; volume % changes and dominance ratios are from CoinGecko. Time Zone Analysis is based on data from Binance. Spot volume leaders are based on data from Binance Bybit, Coinbase, Kraken, OKX, KuCoin, HTX, Upbit, Gate.io. Futures data are from Binance OKX, Bybit, KuCoin. Options data are from Deribit.</p>
<b>TRADFI</b>	Investing.com Farside Investors	<p><b>BTC Spot ETF Flows</b> are based on data shown on farside.co.uk at UTC 03:00. Due to varying data reporting schedules among ETF sponsors, the figures may not encompass data from all 10 ETFs.</p>
<b>STABLECOIN ONCHAIN MOVES</b>	DefiLlama	<p><b>Stablecoin Supply</b> is a proxy for fiat on/off ramp from TradFi into crypto.</p> <p><b>USDT Prem/Disc</b> reflects the USDT supply/demand imbalance, approximating the market's risk aversion towards USDT specifically, and/or the crypto market more broadly. The data is from Coinbase.</p> <p><b>TVL/ Crypto MC Ratio</b> = Total Value Locked / Crypto Market Cap. The ratio neutralizes the TVL changes caused by asset price fluctuations.</p>
<b>EVENTS CALENDAR</b>	CoinMarketCap Investing.com	<p><b>Events Calendar</b> provides a summary of major events happening throughout the month.</p>

\* The Daily Market Brief is published every business day, following the Singapore calendar, excluding public holidays

## About Presto

Presto is an algorithmic trading firm where researchers and engineers solve challenging problems in global financial markets. Our core strength lies in combining engineering, mathematics, and science to navigate both digital asset and traditional finance markets with precision. Presto Research, our research unit, provides expert-driven insights to help navigate these markets effectively.

Find out more at <https://www.prestolabs.io>.

Follow Presto for more content: [X](#), [LinkedIn](#)

Follow Presto Research for latest research : [X](#), [Telegram](#)

---

## Authors

Min Jung, Research Associate [X](#), [Telegram](#), [LinkedIn](#)

---

## Required Disclosures

*Any expression of opinion (which may be subject to change without notice) is personal to the author and the author makes no guarantee of any sort regarding accuracy or completeness of any information or analysis supplied. The views and opinions expressed herein are those of the author(s) and do not necessarily reflect the views of Presto or its affiliates. This material by itself, is not and should not be construed as an offer or a solicitation to deal in any investment product or to enter into any legal relations. This material is for informational purposes only and is only intended for sophisticated investors, and is not intended to provide accounting, legal, or tax advice, or investment recommendations, or an official statement of Presto or its affiliates. Presto, its affiliates and its employees make no representation and assume no liability to the accuracy or completeness of the information provided. Presto, its affiliates and its employees also do not warrant that such information and publications are accurate, up to date or applicable to the circumstances of any particular case. Certain statements in this document provide predictions and there is no guarantee that such predictions are currently accurate or will ultimately be realized. Prior results that are presented here are not guaranteed and prior results do not guarantee future performance. Recipients should consult their advisors before making any investment decision. Presto or its affiliates may have financial interests in, or relationships with, some of the assets, entities and/or publications discussed or otherwise referenced in the materials. Certain links that may be provided in the materials are provided for convenience and do not imply Presto's endorsement, or approval of any third-party websites or their content. Any use, review, retransmission, distribution, or reproduction of these materials, in whole or in part, is strictly prohibited in any form without the express written approval of Presto. Presto Research and related logos are trademarks of Presto, or its affiliates.*