

**Daily Market Brief**  
**Apr 15, 2026 (UTC -02:00)**

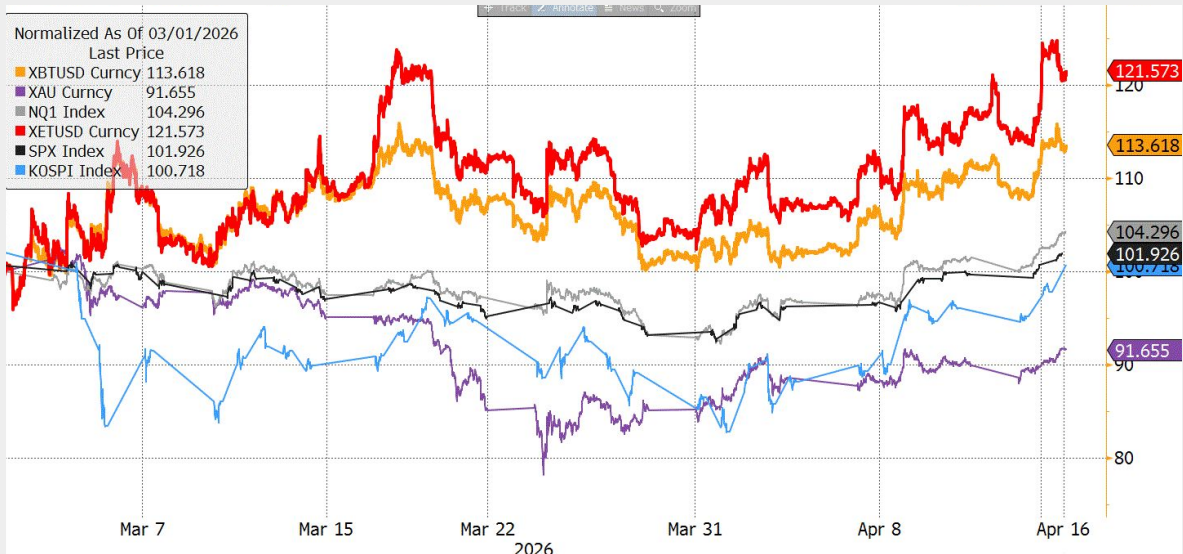
**Peter Chung** | Head of Research  
**Min Jung** | Research Associate

<b>BTC</b>	<b>\$74,164.85</b>	<b>S&amp;P500</b>	<b>6,967.39</b>	<b>US 10Y</b>	<b>4.2390%</b>	<b>WTI</b>	<b>\$90.30</b>
	-0.4%		+1.2%		-0.0580PPT		-8.9%
<b>ETH</b>	<b>\$2,322.57</b>	<b>Nasdaq</b>	<b>23,639.08</b>	<b>DXY</b>	<b>98.07</b>	<b>Gold</b>	<b>\$4,861.95</b>
	-2.0%		+2.0%		-0.3%		+2.0%

- Market remains rangebound. As of now \$BTC is trading at \$74,164 and \$ETH is trading at \$2,322. Bitcoin dominance stands at 59.84%.
- Goldman Sachs has filed for a Bitcoin ETF that gains exposure indirectly by investing in existing spot Bitcoin ETFs and related instruments rather than holding Bitcoin itself. The structure is designed to offer a more conservative, yield-oriented approach to Bitcoin exposure, potentially appealing to investors seeking reduced volatility.
- A few headlines include: Fed chair nominee Warsh discloses \$100M+ in assets with stakes in SpaceX and Polymarket, Coinbase has been in close communication with Anthropic to seek access to Mythos, and CoW Swap urges users to pause activity amid a domain hijacking incident.
- During the last 24 hours, the top three gainers were \$OM, \$RAVE, and \$RIVER, while the top three losers were \$ULTIMA, \$LIT, and \$HASH.

**Pre-War Recovery Signals Risk-On Shift (Gold Lags)**

After a strong close last night, major risk assets have now fully recovered to their 2/28 pre-war levels. Crypto is a standout, having never traded below the 2/28 level except during the immediate onset of the war. This says something about the current state of the risk assets - i.e., the corrections since the ATHs (SPX -10%, NQ1 -15%, KOSPI -20%, BTC -50%) have flushed out weak hands, leaving investors ready to deploy capital and bargain hunt. The asymmetric reactions of risk assets to the zig-zagging war headlines over the past six weeks further support this. Interestingly, gold has never recovered to its pre-war level, potentially illustrating where fresh capital sees the fastest horses in the upcoming phase of the market.



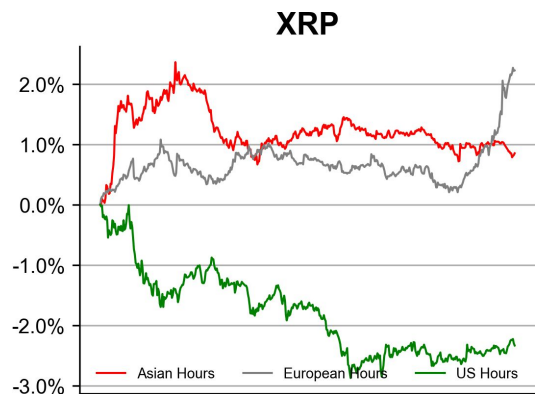
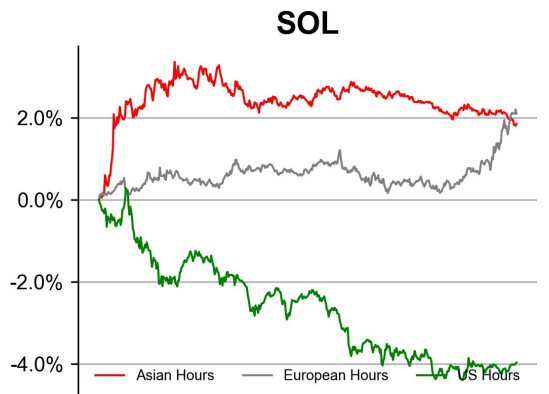
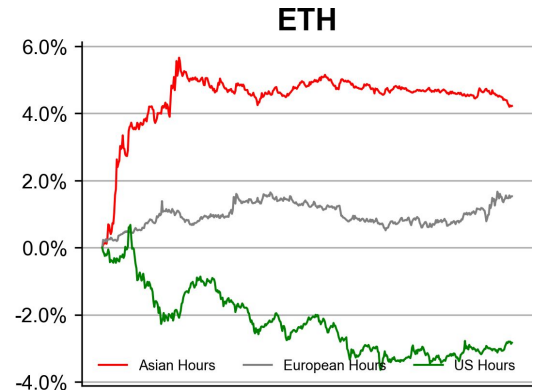
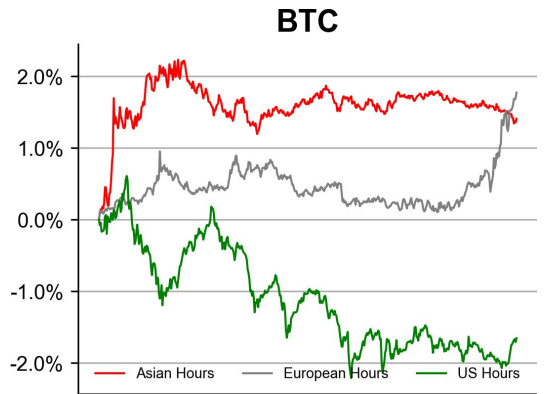
Source: Bloomberg

# PRICE ACTIONS

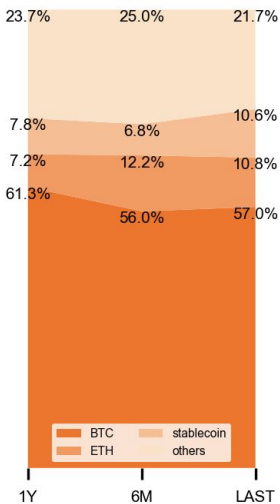
## 24H Price Change (Top/Bottom 25 from Top 200)

OM	-	+351.4%
RAVE	-	+95.1%
□□□□	-	+67.4%
RIVER	-	+14.5%
GENIUS	-	+9.4%
EDGE	-	+8.5%
CRCLON	-	+6.3%
M	-	+5.2%
ZANO	-	+3.3%
JST	-	+2.6%
COMP	-	+2.6%
PAXG	-	+1.9%
APEPE	-	+1.8%
DEXE	-	+1.7%
SFP	-	+1.2%
KITE	-	+1.1%
KAU	-	+1.1%
TRX	-	+1.0%
SATUSD	-	+0.9%
WFI	-	+0.6%
LDO	-	+0.6%
REAL	-	+0.6%
GT	-	+0.5%
EUTBL	-	+0.3%
EURC	-	+0.3%
FARTCOIN	-	-4.6%
SPX	-	-4.7%
WLD	-	-4.7%
DOT	-	-4.8%
PENDLE	-	-4.8%
PUMP	-	-4.8%
FET	-	-4.9%
RAIN	-	-4.9%
PEPE	-	-4.9%
WAL	-	-4.9%
TEL	-	-5.3%
ZRO	-	-5.5%
FLOKI	-	-5.5%
GRASS	-	-5.6%
AERO	-	-5.8%
SYRUP	-	-6.0%
DASH	-	-7.4%
SIREN	-	-8.1%
TAO	-	-8.3%
NIGHT	-	-8.6%
HASH	-	-10.1%
LIT	-	-10.5%
ULTIMA	-	-17.2%
USYC	-	-
USDA	-	-

## Time Zone Analysis



## Dominance Ratio

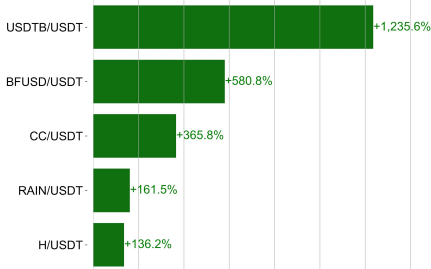


## Sector Performance

RWA	-	+66.7%
CEX	-	-0.2%
Digital Gold	-	-0.4%
Dino Coins	-	-1.7%
Layer 1	-	-1.8%
Memecoin	-	-1.9%
DEX	-	-2.1%
Gaming	-	-2.1%
BTC Eco	-	-2.8%
DeFi	-	-3.1%
Oracle	-	-3.7%
DePIN	-	-3.8%
Layer 2	-	-4.0%
Bridge	-	-5.5%
AI	-	-6.3%

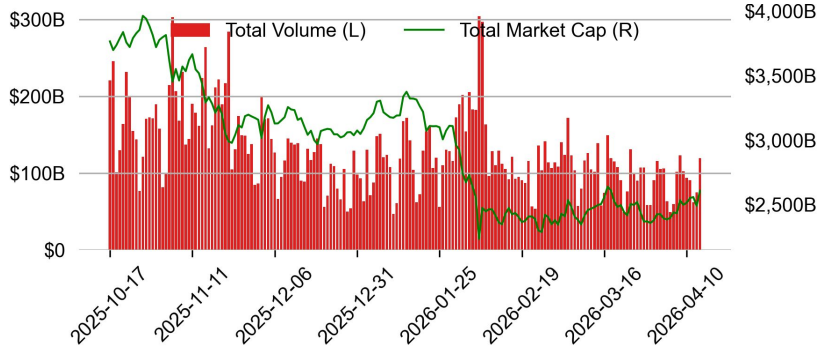
# TRADING VOLUME

## 24H Vol % Chg\*

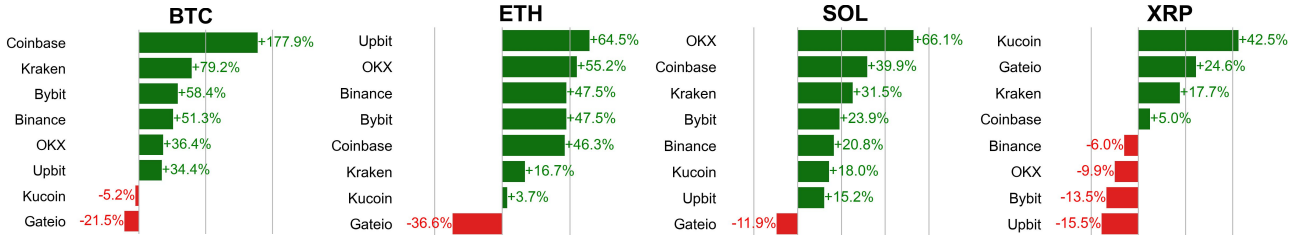


\* 5 largest 24H vol. change from the universe of top 50 assets by market cap

## Spot Volume



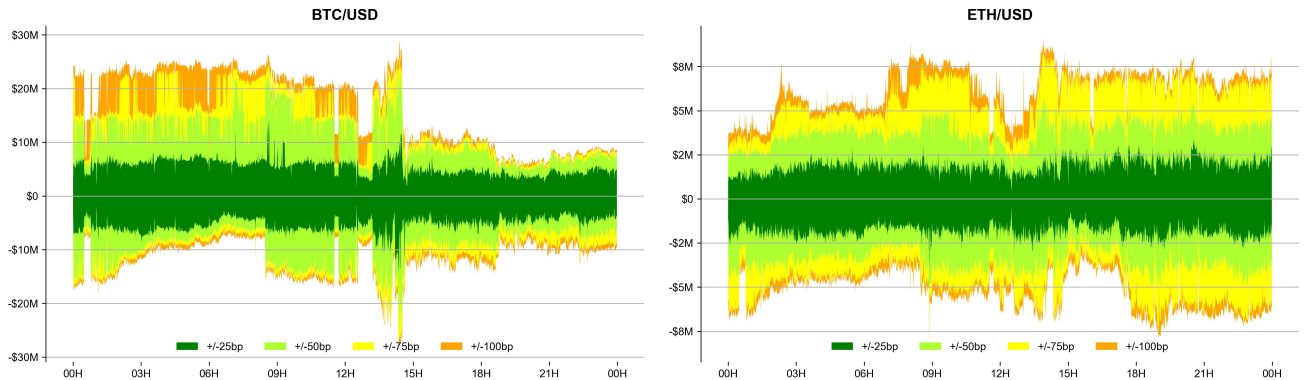
## Spot Volume Leaders (% chg vs ave)\*



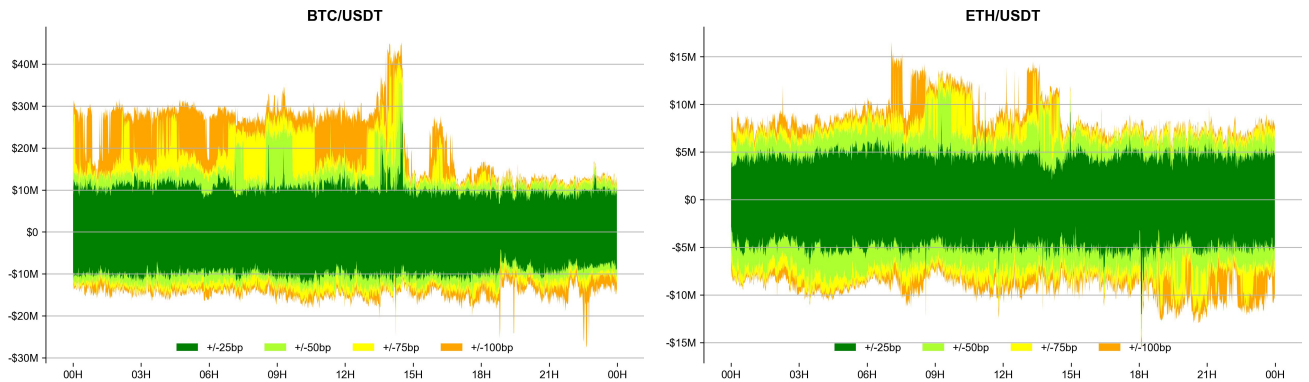
\* ranked by the % difference between the 24H volume vs. the 30-day average

## ORDER BOOK DEPTH (within 1% best bid/ask)

### Coinbase

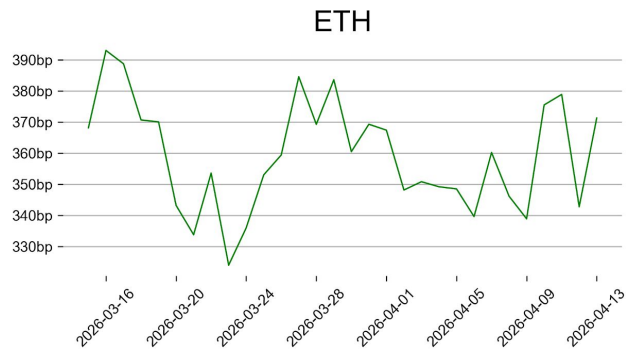
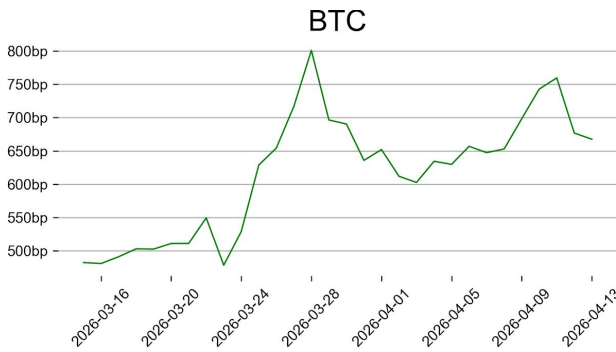


### Binance

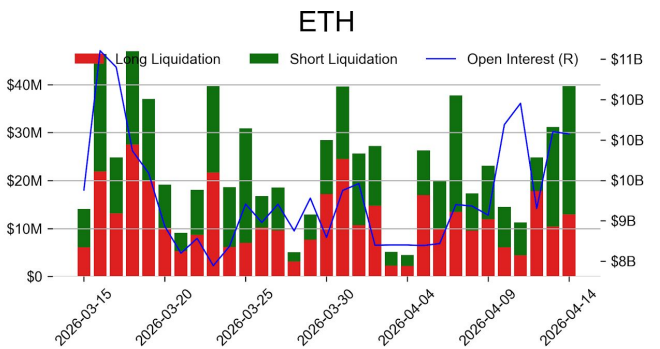
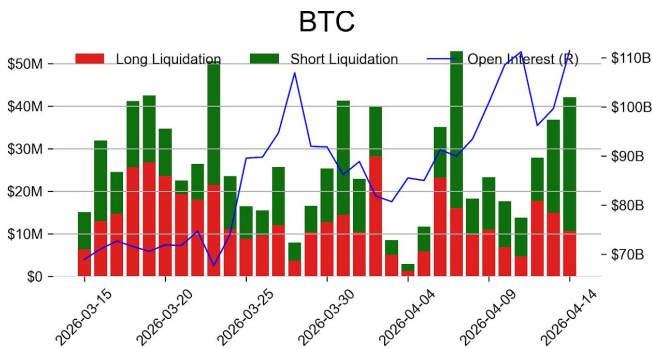


# DERIVATIVES

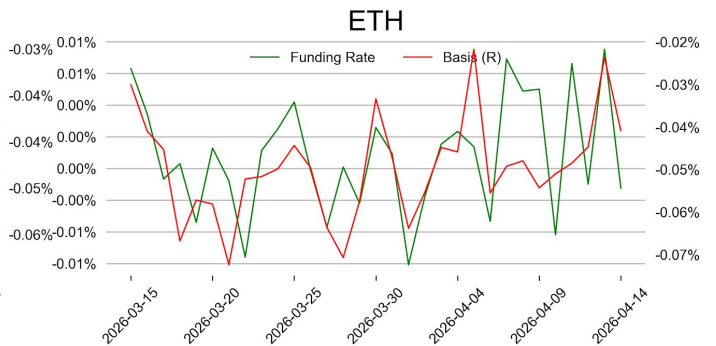
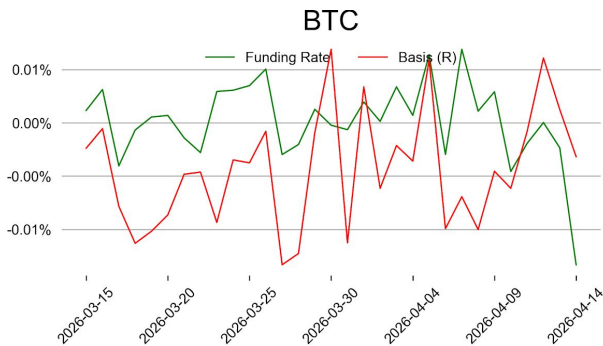
## Open Interest / Market Cap



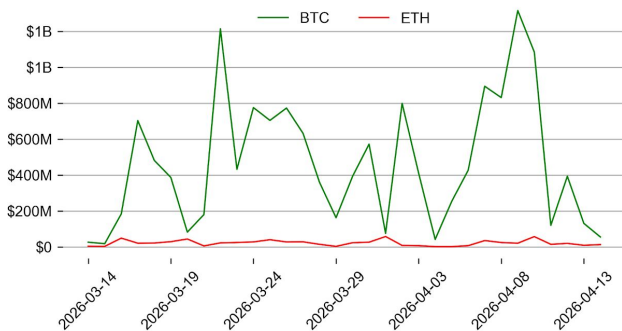
## Futures O.I. & Liquidations



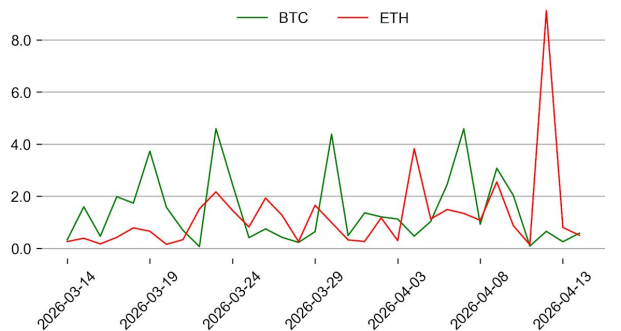
## Perps Funding Rate & Rolling Basis



## Option Volume



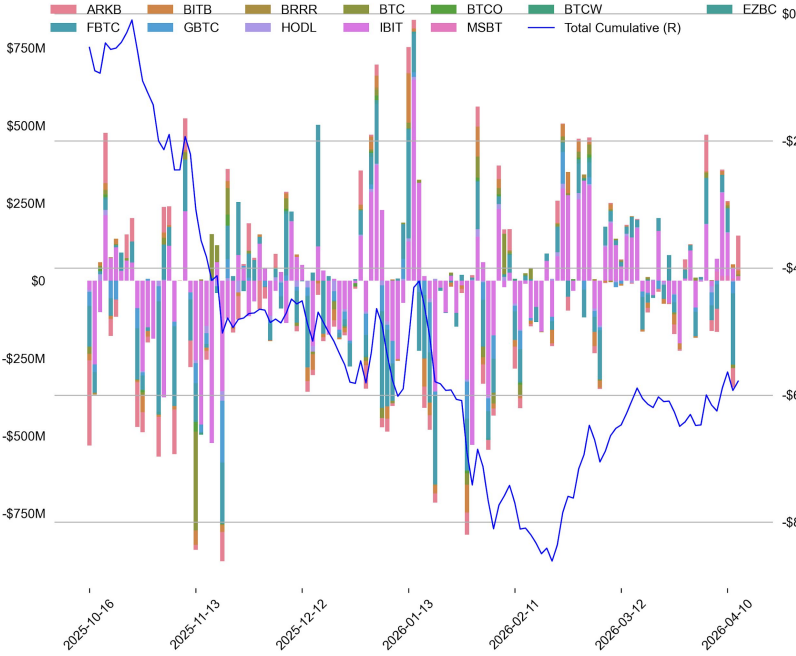
## Put Call Ratio



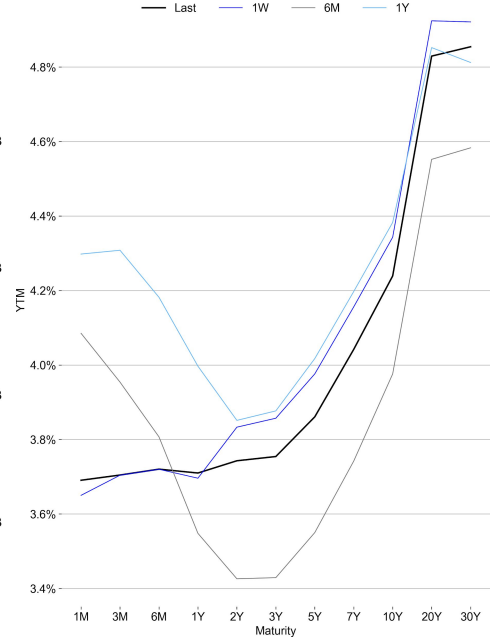
# TRADFI

	Stocks					FX				Commodity		Crypto Equity			
	S&P500	Nasdaq	EuroStoxx50	HSI	CSI300	USD/EUR	USD/JPY	USD/CNY	DXY	WTI	Gold	COIN	MSTR	MARA	RIOT
Last	6967.39	23639.08	5983.25	25872.32	4701.28	0.8478	158.80	6.8158	98.07	90.30	4861.95	184.41	137.41	10.49	18.12
1D	1.2%	2.0%	1.3%	0.8%	1.2%	-0.3%	-0.4%	-0.2%	-0.3%	-8.9%	2.0%	5.7%	3.8%	1.3%	4.3%
1M	5.1%	6.9%	4.7%	1.6%	0.7%	-3.2%	-0.6%	-1.2%	-2.3%	-6.8%	-3.9%	-5.7%	-1.6%	12.6%	29.1%
1Y	28.9%	40.4%	21.8%	20.8%	25.1%	-3.8%	11.1%	-6.8%	-1.6%	47.9%	50.7%	4.4%	-55.9%	-19.0%	158.5%

## BTC Spot ETF Flow

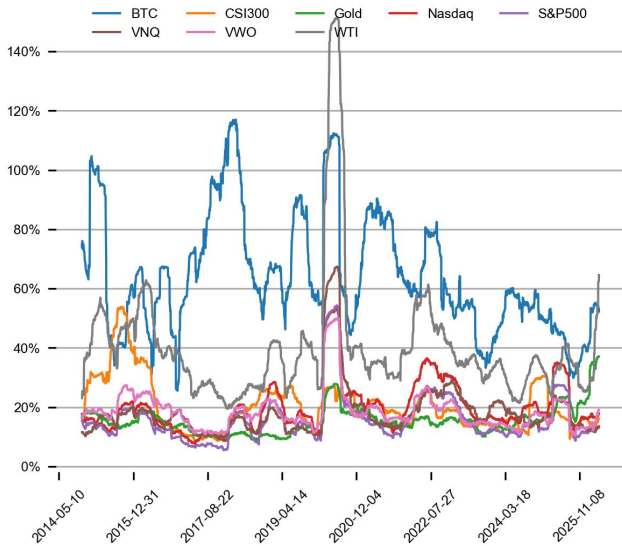


## US Treasury Yield Curve

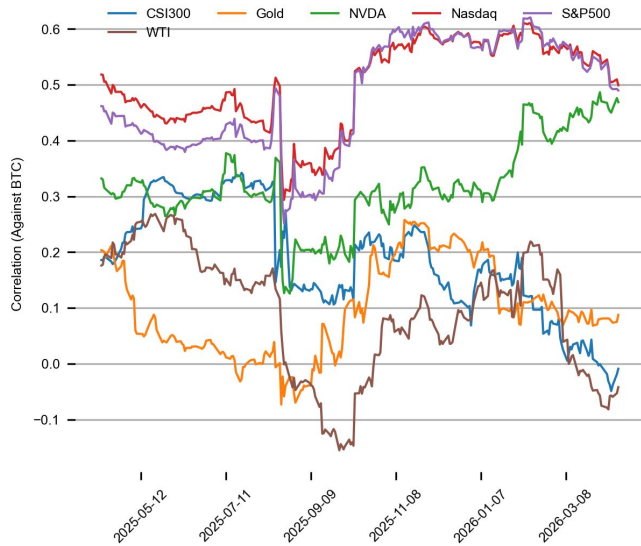


## CROSS ASSET METRICS

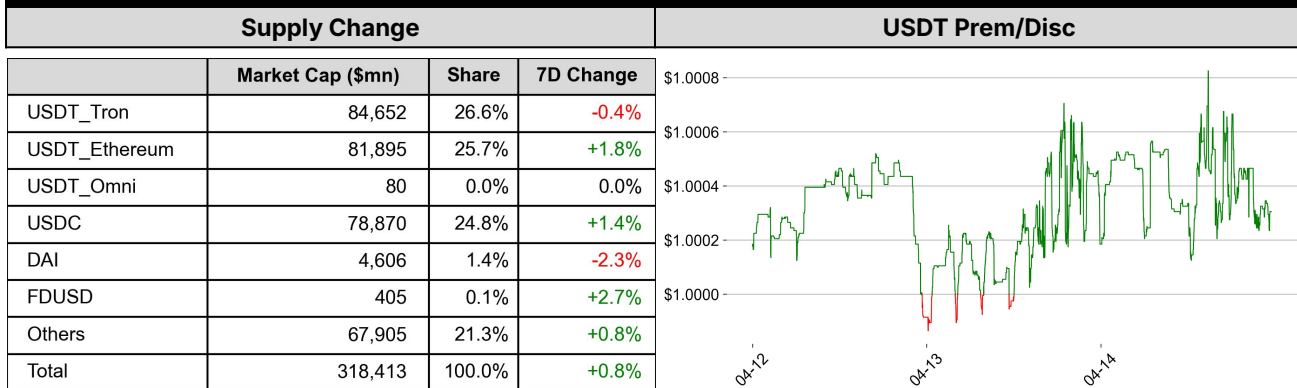
### Volatility



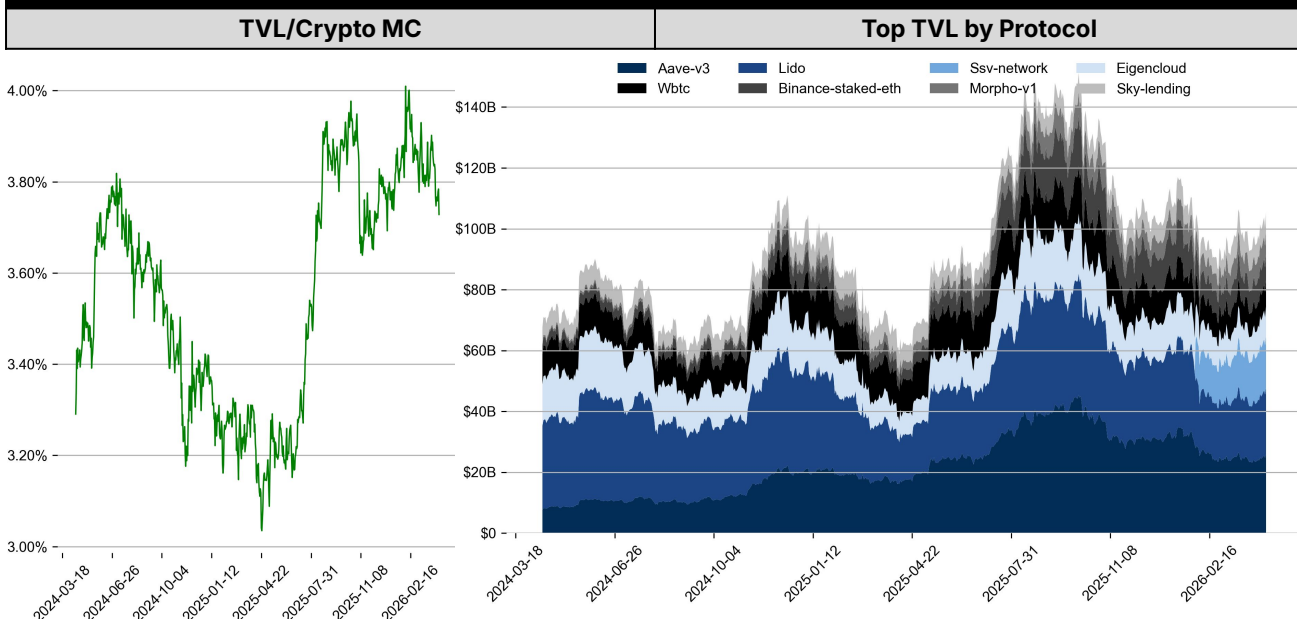
### Correlation



## STABLECOIN



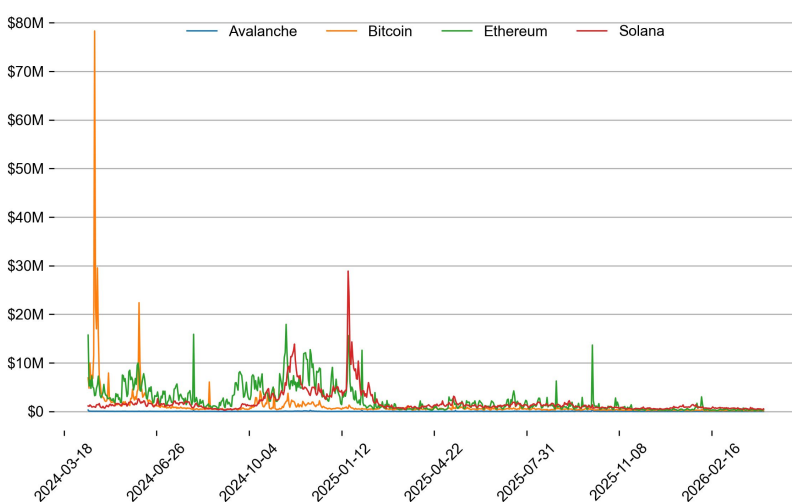
## ONCHAIN MOVES



### Top TVL Gainers\*

#	Name	7D Change
1	Ember Protocol	+87.0%
2	River Omni-CDP	+48.8%
3	OKX	+43.1%
4	Reservoir Protocol	+24.4%
5	Lorenzo enzoBTC	+22.8%

### Daily Network Fees



\* 5 largest 7 day TVL change in % terms from the universe of minimum \$100m TVL protocols, according to DefiLlama.

**EVENTS CALENDAR**

<b>Date</b>	<b>Title</b>	<b>Coins / Hosts</b>
Apr 3, 2026	Morgan Stanley Spot BTC ETF	
Apr 6, 2026	~\$12.3M Unlock	\$HYPE
Apr 7, 2026	Samsung Preliminary Earnings	
Apr 8, 2026	FOMC March Minutes	
Apr 9, 2026	US PCE	
Apr 10, 2026	US CPI	
Apr 14, 2026	US PPI	
Apr 15, 2026	FED Beige Book	
Apr 16, 2026	TSMC Earnings Call	
Apr 17, 2026	Scene of the Hearing for Kevin Warsh	
Apr 27, 2026	BOJ Rate Decision	
Apr 28, 2026	\$12.78M Unlock	\$SIGN
Apr 29, 2026	FOMC	
Apr 30, 2026	FTX Payout Record Date	

## DATA EXPLAINER

Headers	Source	Note
<b>PRICE ACTIONS TRADING VOLUME ORDER BOOK DEPTH DERIVATIVES</b>	Presto Labs	<p><b>Time Zone Analysis</b> separates out the asset's price action according to the business hours in Asia, Europe and US region. This is to identify which geography is responsible for price actions of the last 24hrs. The cut-offs are,</p> <ul style="list-style-type: none"> <li>- Asia: UTC 22:00 -1 to UTC 6:00</li> <li>- Europe: UTC 6:00 to 14:00</li> <li>- US: UTC 14:00 to 22:00</li> </ul> <p><b>Sector</b> constituents are, AI(FET, AGIX, OCEAN), BTC Eco(BCH, BSV, ICP, STX, ORDI), CEX(BNB, CRO, OKB, KCS, BGB), Data(LINK, GRT), DePIN(ICP, FIL, AR, HNT, SIA), DEX(UNI, INJ, RUNE, SNX, DYDX, OSMO, CRV, CAKE, GMX), Digital Gold(BTC), Gaming/Metaverse(IMX, BEAM, SAND, GALA, AXS, WEMIX, RON), LO(AVAX, DOT, TIA), L2(MATIC, OP, MNT, ARB, STRK), Lending(MKR, AAVE, COMP), Liquid Staking(LDO, RPL, JTO), Meme(DOGE, SHIB, FLOKI), NFT(APE, BLUR), Payments(XRP, LTC, XLM, XMR, ZEC), RWA(ONDO, CFG), Smart Contract(ETH, BNB, SOL, ADA, TRX, TON, APT, NEAR, HBAR, VET, ALGO, FTM, SUI, FLOW, MINA). The sector return is market-cap weighted average of the constituents' returns.</p> <p><b>Exchanges:</b> 24H spot price &amp; volume % changes and dominance ratios are from CoinGecko. Time Zone Analysis is based on data from Binance. Spot volume leaders are based on data from Binance Bybit, Coinbase, Kraken, OKX, KuCoin, HTX, Upbit, Gate.io. Futures data are from Binance OKX, Bybit, KuCoin. Options data are from Deribit.</p>
<b>TRADFI</b>	Investing.com Farside Investors	<p><b>BTC Spot ETF Flows</b> are based on data shown on farside.co.uk at UTC 03:00. Due to varying data reporting schedules among ETF sponsors, the figures may not encompass data from all 10 ETFs.</p>
<b>STABLECOIN ONCHAIN MOVES</b>	DefiLlama	<p><b>Stablecoin Supply</b> is a proxy for fiat on/off ramp from TradFi into crypto.</p> <p><b>USDT Prem/Disc</b> reflects the USDT supply/demand imbalance, approximating the market's risk aversion towards USDT specifically, and/or the crypto market more broadly. The data is from Coinbase.</p> <p><b>TVL/ Crypto MC Ratio</b> = Total Value Locked / Crypto Market Cap. The ratio neutralizes the TVL changes caused by asset price fluctuations.</p>
<b>EVENTS CALENDAR</b>	CoinMarketCap Investing.com	<p><b>Events Calendar</b> provides a summary of major events happening throughout the month.</p>

\* The Daily Market Brief is published every business day, following the Singapore calendar, excluding public holidays

## About Presto

Presto is an algorithmic trading firm where researchers and engineers solve challenging problems in global financial markets. Our core strength lies in combining engineering, mathematics, and science to navigate both digital asset and traditional finance markets with precision. Presto Research, our research unit, provides expert-driven insights to help navigate these markets effectively.

Find out more at <https://www.prestolabs.io>.

Follow Presto for more content: [X](#), [LinkedIn](#)

Follow Presto Research for latest research : [X](#), [Telegram](#)

---

## Authors

**Peter Chung**, Head of Research [X](#), [Telegram](#), [LinkedIn](#)

**Min Jung**, Research Associate [X](#), [Telegram](#), [LinkedIn](#)

---

## Required Disclosures

*Any expression of opinion (which may be subject to change without notice) is personal to the author and the author makes no guarantee of any sort regarding accuracy or completeness of any information or analysis supplied. The views and opinions expressed herein are those of the author(s) and do not necessarily reflect the views of Presto or its affiliates. This material by itself, is not and should not be construed as an offer or a solicitation to deal in any investment product or to enter into any legal relations. This material is for informational purposes only and is only intended for sophisticated investors, and is not intended to provide accounting, legal, or tax advice, or investment recommendations, or an official statement of Presto or its affiliates. Presto, its affiliates and its employees make no representation and assume no liability to the accuracy or completeness of the information provided. Presto, its affiliates and its employees also do not warrant that such information and publications are accurate, up to date or applicable to the circumstances of any particular case. Certain statements in this document provide predictions and there is no guarantee that such predictions are currently accurate or will ultimately be realized. Prior results that are presented here are not guaranteed and prior results do not guarantee future performance. Recipients should consult their advisors before making any investment decision. Presto or its affiliates may have financial interests in, or relationships with, some of the assets, entities and/or publications discussed or otherwise referenced in the materials. Certain links that may be provided in the materials are provided for convenience and do not imply Presto's endorsement, or approval of any third-party websites or their content. Any use, review, retransmission, distribution, or reproduction of these materials, in whole or in part, is strictly prohibited in any form without the express written approval of Presto. Presto Research and related logos are trademarks of Presto, or its affiliates.*